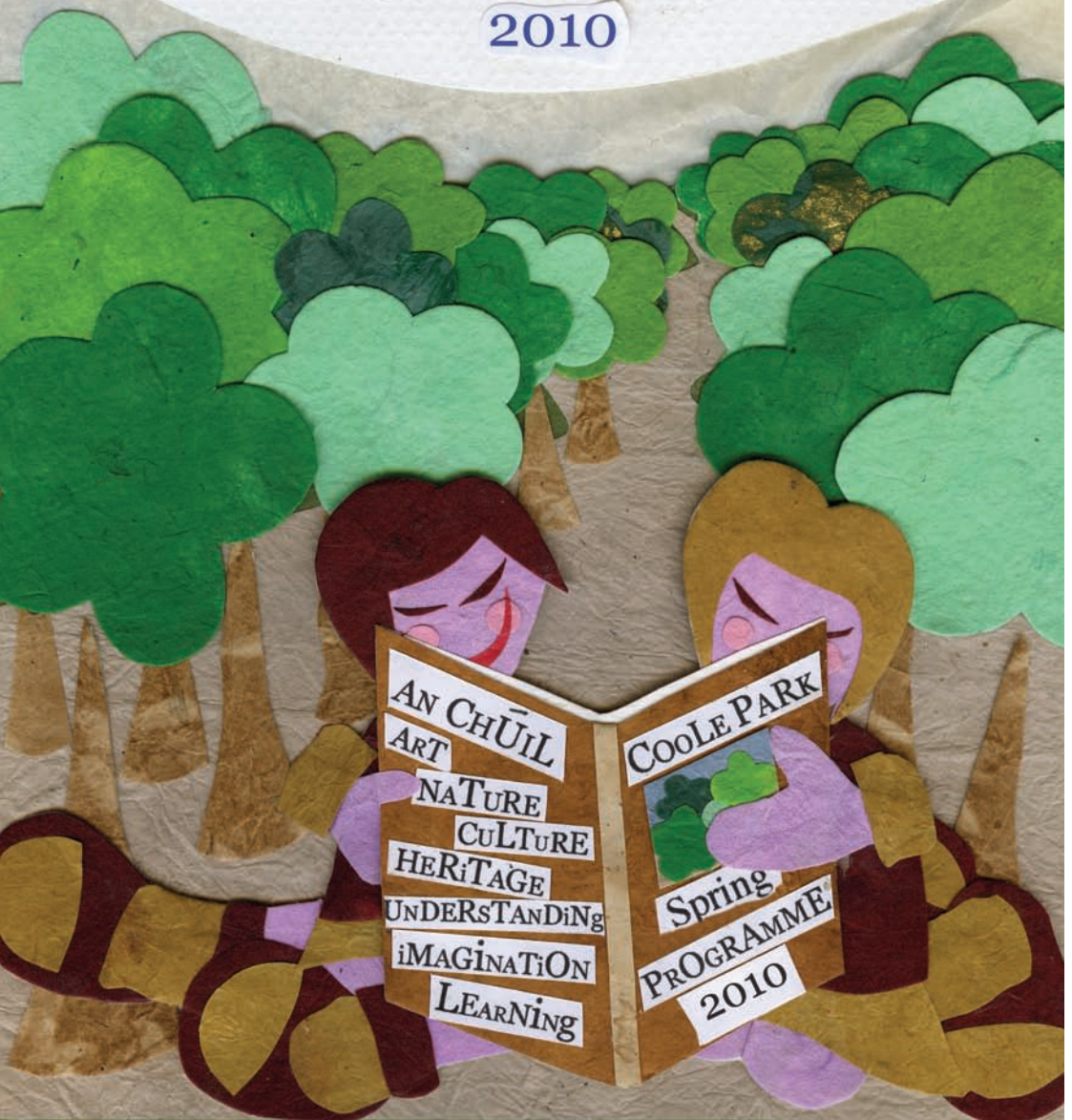




Coole Park  
Spring Programme  
2010



# COOLE PARK SPRING CULTURAL PROGRAMME 2010

## JANUARY

### HERITAGE SERIES:

**Thursday 21st January, 8.00pm – 9.00pm**

***A Stranger's Gaze: 'The Town Land of Coole: Stony, Rocky and Two Thirds Profitable'* by Terri Shoosmith.**



In this lecture, Terri Shoosmith (PhD student at NUI Galway & who recently completed a MA thesis on landscape & settlement in the Barony of Tulla from 1585-1810) focuses on the Books of Survey & Distribution, compiled from records first obtained in the 1640s. The Books of Survey and Distribution are used by historians as a source of information on the confiscation and bestowal of land during the Tudor period. But they also tell us a great deal about the topography of the landscape and the attitudes of the English government towards land and land use. (Carried over from Winter 2009 Programme).

### MUSIC SERIES

**Monday 25th January, 8.00pm – 9.00pm**

***A phenomenal Irish music evening with Denis Liddy & Elvie Miller.***

Fiddle player Denis Liddy, leading member of the famed Turloughmore Céili Band is immersed in music. He has played the fiddle since he was 8 years old. He won numerous All-Ireland awards as a soloist and as a group and band member. He is involved both as a teacher and musician in a variety of music-related projects / events and countless music workshops worldwide. He will be accompanied by Elvie Miller, who also started playing music at a young age. Over the years has shifted from classical piano to Irish/contra dance accordion and piano. Both Liddy and Miller performed together at the Milwaukee Irish Fest in 2007.



### LITERATURE SERIES

**Thursday 28th January, 8.00pm – 9.00pm**

***Inside & outside the gates: Yeats & Kavanagh in rural Ireland* by Michael O'Loughlin**



In this lecture Michael O'Loughlin looks Yeats' and Kavanagh's work in terms of their physical relationship to the landscape of rural Ireland. How does the way people move around in the landscape affect their work? O'Loughlin argues that what makes Kavanagh's work so original and authentic is his stance to the landscape, an eye-to-eye democratic stance in contrast to the view of Yeats or Synge, the view from horseback.

### DANCE SERIES

**Saturday 30th January, 2.00pm – 5.00pm**

***Sean-nós Dancing Workshop with Emma O'Sullivan***

Introductory sean-nós dancing workshop with Emma O'Sullivan current All Ireland Champion sean-nós dancer. Emma, who teaches sean-nós dance full-time is currently in the semi final of the All Ireland Talent Show on RTE 1. Following on from the Coole Spring 2009 sean-nós dance concert, this workshop will give you the opportunity to learn a few steps. \*\*\*Advanced booking is required as places are limited. Coole Park 631804\*\*\*



## FEBRUARY



### LITERATURE / DRAMA SERIES

**Luan 1 Feabhra / Monday 1st February, 7.30 – 9.30 i.n. / pm**

**Seoladh 'Féile Raifteirí' mar aon le léamh & dráma bunaithe ar Phádraic Ó Conaire le Diarmuid De Faoite. Launch of *Féile Raifteirí* followed by readings & drama excerpts on *Pádraic Ó Conaire* by Diarmuid de Faoite.**

Tá seanaithe ar Dhiarmuid De Faoite idir lucht teilifíse agus amharlainne ar aon, go háirithe trí mheán na Gaeilge. Tá saothar iontach déanta aige le deireanas in 'Pádraic Ó Conaire – An Fear', dráma faisnéise a bhuaigh go leor gradaim. Mar aon leis sin, tá bailiúcháin gearrscéalta le Pádraic Ó Conaire curtha in eagar agus foilsithe aige. Ar an oíche, beidh sliochtanna ón dhráma agus ó shaothair na ngearrscéalta á léiriú aige. Cuirfear tús leis an oíche le ceol le Úna Ní Fhlannagáin is a cairde sular seolfar 'Féile Raifteirí' go hoifigiúil. *Diarmuid de Faoite is well known to both television and theatre audiences, particularly through his Irish language work. One of his most recent works includes 'Pádraic Ó Conaire - An Fear', an award winning drama documentary. He has also edited and published a collection of short stories by Pádraic Ó Conaire. He will combine some of his readings and excerpts from his play. This event will be preceded by music with Úna Ní Fhlannagáin & friends and the launch of Féile Raifteirí. I gcomhar le Gaeilge Locha Riach / In association with Gaeilge Locha Riach.*

### MUSIC SERIES

**Thursday 4th February, 8.00pm – 9.00pm**

**An evening of Classical Music with the Cantabile Trio.**

An evening for all with the Cantabile Trio. Music for Violin, Viola and Piano ranging from Bach and Mozart to Debussy. The Cantabile Trio are made up of artists Tom Murphy on Violin / Viola, Katharina Baker on Violin / Viola and Rachael McCall on Piano.



### HERITAGE SERIES:

**Sunday 7th February, 2.00pm – 4.00pm**

**Biodiversity 2010 – World Wetlands Day at Coole**



Take a walk to the internationally famous Turlough / Lake with NPWS staff as part of World Wetlands Day. Gordon D'Arcy, natural heritage expert & artist will host children's art workshops. An ongoing slideshow of images of the Coole Turlough / Lake through the seasons will be on display. \*\*\* Advanced booking is required for the art workshops.

Coole Park 631804\*\*\*

### MUSIC SERIES

**Monday 8th February, 8.00pm – 9.00pm**

**Julie Feeney in concert**

Galwegian Julie Feeney released a spellbinding 2nd album 'pages' to huge critical acclaim in 2009. The album is nominated for the prestigious 'Irish Album of the Year - Choice Music Prize 2010'. She was also recently nominated for a 'Meteor Best Irish Female' award in February. Producer, composer, orchestrator, singer, conductor, performer and instrumentalist; she first won the Choice Music Prize (Ireland's equivalent of the Mercury Prize) with her debut album '13 songs' which was self produced & self released, Julie having played 11 of the instruments. She later orchestrated the album for 65 piece Ulster Orchestra with whom she performed, and premiered other concert commissions as a composer and conductor in the U.K. and Ireland. On 'pages', she sang, composed and produced the songs in their entirety and conducted the Irish Chamber Orchestra on all of the instrumental music. She will headline at the National Concert Hall in May.



[www.juliefeeney.com](http://www.juliefeeney.com)

\*\*\*Advanced booking is required as places are limited. Coole Park 631804\*\*\*

**Thursday 11th February, 8.00pm – 9.00pm**



***A Walk on the Wilde Side with Gerard Hanberry***

Poet and writer, Galway-born Gerard Hanberry, discusses the Wilde family. Gerard Hanberry has spent ten years researching and writing a history of the Wilde family. He will read from his manuscript and give a talk on the subject. Gerard will be accompanied by harpist Sylvia Crawford.

**In association with the Western Writers Centre.**

**Friday 12th February, 8.00pm – 9.00pm**

***Creative Writing Readings with Michael O'Loughlin and students from Gort Community School. (Carried over from Winter 2009 Programme).***

Michael O'Loughlin, writer in residence with Galway County and City Councils presents the results of creative writing workshops in association with participating students from Gort Community School. The workshops focused on the area's great literary and cultural heritage.



**Friday 19th February, 8.00pm – 9.00pm**

***The Gombeens present Stories of a Yellow Town***



This emotional & enlightening journey, based on a collection of real-life personal stories / observations recorded by interviewing Brazilians & Irish in Gort, documents the first time Brazilians came to Gort to present day. It is a remarkable insight into struggles, misunderstandings and happy incidents that occur when two communities, side by side, are left to get on with it. This hilarious & touching drama engages real issues from start to finish.

**MARCH**

**NATURE / FAMILY EVENT / MUSIC SERIES**

**Sunday 7th March: Biodiversity 2010 – Tree Week**



**2.30 – 4.00pm *Cooler Trees in Spring***

Learn how to identify trees in Spring with NPWS staff.

Indoor & outdoor family fun activities include scavenger hunts and games.

**4.00 – 5.00pm *Story telling with Clare Murphy***

Clare Murphy's repertoire encompasses Irish mythology, legends and folktales as well as a plethora of world folktales, fables, legends, participation stories and anecdotes. Clare tells Tree related stories to the children to celebrate Tree Week. Age 7 – 11. \*\*\* **Advanced booking is required for the storytelling event as places are limited. Coole Park: 091 631804\*\*\***



**NATURE / FAMILY EVENT / MUSIC SERIES**

**Sunday 14th March: Biodiversity 2010 – Tree Week**

**2.30 – 4.00pm *Cooler Trees in Spring – A walk***

Áine O'Loughlin, NPWS Guide will lead a walk illustrating Coole through the history of its trees from Gregory times to present day.

**4.00 – 5.00pm *Mexican music concert by Gringo Stars***

Gringo Stars: Paul Gunning (accordion Maimín Cajun), Johnny Moynihan (Sweeney's men/ De Danann), Peter Brazier (guitar) & John Martin (Boucherie Cajun) bring to life Mexican based roots music from sweet & lively twin harmony fiddles of traditional stringbands to pulsating folk accordions of Tex-Mex border music. Singing *en Español*, & backing the music with *guitarrón* & *bajo sexto*, the Gringos deliver a varied & engaging mix of upbeat, dramatic, & enchanting listening & dance music with a healthy dose of fun & sun. (Carried over from Winter 2009 Programme).



## READING AND UNDERSTANDING THE LANDSCAPE

The Reading and Understanding the Landscape is a follow on from Reading the Landscape courses of previous years. It offers a more detailed study into the layers of the landscape. This course will be a guiding template for landscape mapping throughout Co. Galway. The course outline is given below. A limited number of places are available. If you are interested in attending the course, please contact Ms Gráinne Smyth, Heritage Office, Galway Co. Council. Tel: 091 509121, E-mail gsmyth@galwaycoco.ie. (This course will proceed subject to funding).

### Monday 15th February, 8pm – 10pm

*Map Reading Symbols*

Paul Gosling, Archaeologist and Lecturer, Department of Humanities, GMIT

### Thursday 18th February

8pm – 9pm

*OS Maps (all editions)*

Paul Gosling, Archaeologist and Lecturer, Department of Humanities, GMIT

9pm – 10pm

*Corine Environmental Maps*

Bridin Feeney, GIS Officer Galway County Council.

### Monday 22nd February, 8pm – 10pm

*Geology*

Dr. Martin Feeley, Mineralogist & Senior Lecturer, Dept of Earth & Ocean Science, NUIG

### Thursday 25th February, 8pm – 10pm

*Management of the Natural Environment / Pedology*

Dr James Moran, Scientist and Lecturer at Sligo Institute of Technology.

### Monday 1st March, 8pm – 10pm

*Hydrology*

Tiernan Henry, Hydrologist and Lecturer, Dept of Earth & Ocean Science, NUIG

### Thursday 4th March, 8pm – 10pm

*Archaeology*

Christy Cunniffe, Archaeologist & PHD student, Dept. of Archaeology, NUIG

### Monday 8th March, 8pm – 10pm

*Traditional houses in Ireland: their design, materials and relationship to their environment.*

Cliona O'Carroll, Lecturer, Dept of Folklore and Ethnology, NUI Cork

### Thursday 11th March, 8pm – 10pm

*Biodiversity*

Elaine O'Riordan, Project Manager, Galway County Biodiversity Project.

### Monday 15th March, 8pm – 10pm

*Printed Sources*

Miriam Moffitt, Lecturer in Local History Studies, Dept of History, NUI Maynooth.



**Details of 2 fieldtrips & an Archival Repository will be confirmed during the course.**

## NUI MAYNOOTH, CERTIFICATE IN LOCAL HISTORY

The NUI Certificate in Local History is continuing as an outreach programme at Coole Park Visitor Centre. The course provides participants with an opportunity to obtain formal training in local history. It provides a methodological approach to the research and writing of local history. The course is now in its 2nd semester. *This project is delivered in partnership with NUI Maynooth, NPWS, Galway Rural Development, Galway Co. Council, Galway County Heritage Forum and the Friends of Coole.*

## SCHOOLS ARTS & HERITAGE EDUCATION PROGRAMME

All primary schools in Counties Galway and Clare have been invited to participate in the Spring 2010 Education Programme in Coole Park. Details of the programme are below:

### INDOOR ACTIVITIES

- Guided Tour of New Exhibition with Hilda MacLochlainn
- Screening of a selection of FIONN Science Project DVD's
- Audio Visual on Lady Gregory



### OUTDOOR ACTIVITIES

A preparatory session in Coole Park Visitor Centre, followed by Outdoor Field Trips in Coole Nature Reserve with Gordon D'Arcy, Dolores Keegan and National Parks and Wildlife Service staff, now catering for 1st - 6th classes.

### COOLE SERIES OF OUTREACH CHILDREN'S WORKSHOPS (takes place in schools)

The outreach children's workshops are booked through the Project Manager. If you are interested in participating in this programme please contact Coole Park 091 631804.



### ARTS SERIES:

#### Cups and Crowns perform *Blenny the Waterdaughter*

In a small fishing town off the coast of Ireland, Mack the lighthouse keeper watches over the town and the ocean, but feels part of neither. But that was before the day, a Blenny Fish followed him home! This show is a captivating and enthralling tale which is skilfully 'unravelling' by the storyteller who uses only herself and imaginary characters her to bring you into Mack's world.

### HERITAGE SERIES

#### Spinning and Weaving Workshop with Patricia Kirwan Doyle

Patricia Kirwan Doyle is an experienced textile designer and expert weaver. She performs weaving workshops as part of the educational programme with the National Museum of Country Life. This weaving workshop will be an interactive one where the children will try their hand at some simple spinning and weaving.



## ACKNOWLEDGMENTS

The Winter and Spring Programmes at Coole Park were run as a pilot project initially. It began in 2005/2006 and has been a great success, receiving a positive response from the public and schools. This year is the fifth of a five year commitment by the National Parks and Wildlife Services (NPWS) to the Cultural Programme at Coole in partnership with the Friends of Coole, Galway County Council, Galway Rural Development and other partners for the 2009/2010 programme. The 2010 Spring Programme is made possible by the support of several agencies and individuals.

The Friends of Coole sincerely thank the following for their contribution:

The management and staff of National Parks and Wildlife Service (NPWS)

Galway County Council, Galway County Heritage Forum,

Galway Rural Development, The Galway Advertiser,

National University of Ireland Maynooth, Fáilte Ireland West,

Bernard Kirk and The Galway Education Centre,

Kyran Kennedy and The Clare Education Centre

Brenda Byrne for the Cover illustrations, Cepta Quinn Catering

Gordon D'Arcy, Dolores Keegan

Neil Campbell of Galway East Tourism

The Western Writers Centre and Gaeilge Locha Riach

Principals and staff of participating schools in the 2010 Spring Programme

All the teachers and schools who responded to the Coole Education Programme

Sincere thanks to Hilda MacLochlainn, Supervisor Guide, NPWS, Coole Park

and to Bríd Higgins who co-ordinated this programme and brochure

on behalf of the Friends of Coole.

To anybody we have omitted our sincere apologies and our thanks.

**For further information on any of the events in this programme, please contact :**

**Hilda MacLochlainn Coole Park, 091 631804 or visit [www.coolepark.ie](http://www.coolepark.ie)**

**Brochure sponsored by National Parks and Wildlife Service  
and the Friends of Coole, Brenda Byrne, Cover Illustrations**

Admission to ALL events in the programme is FREE.

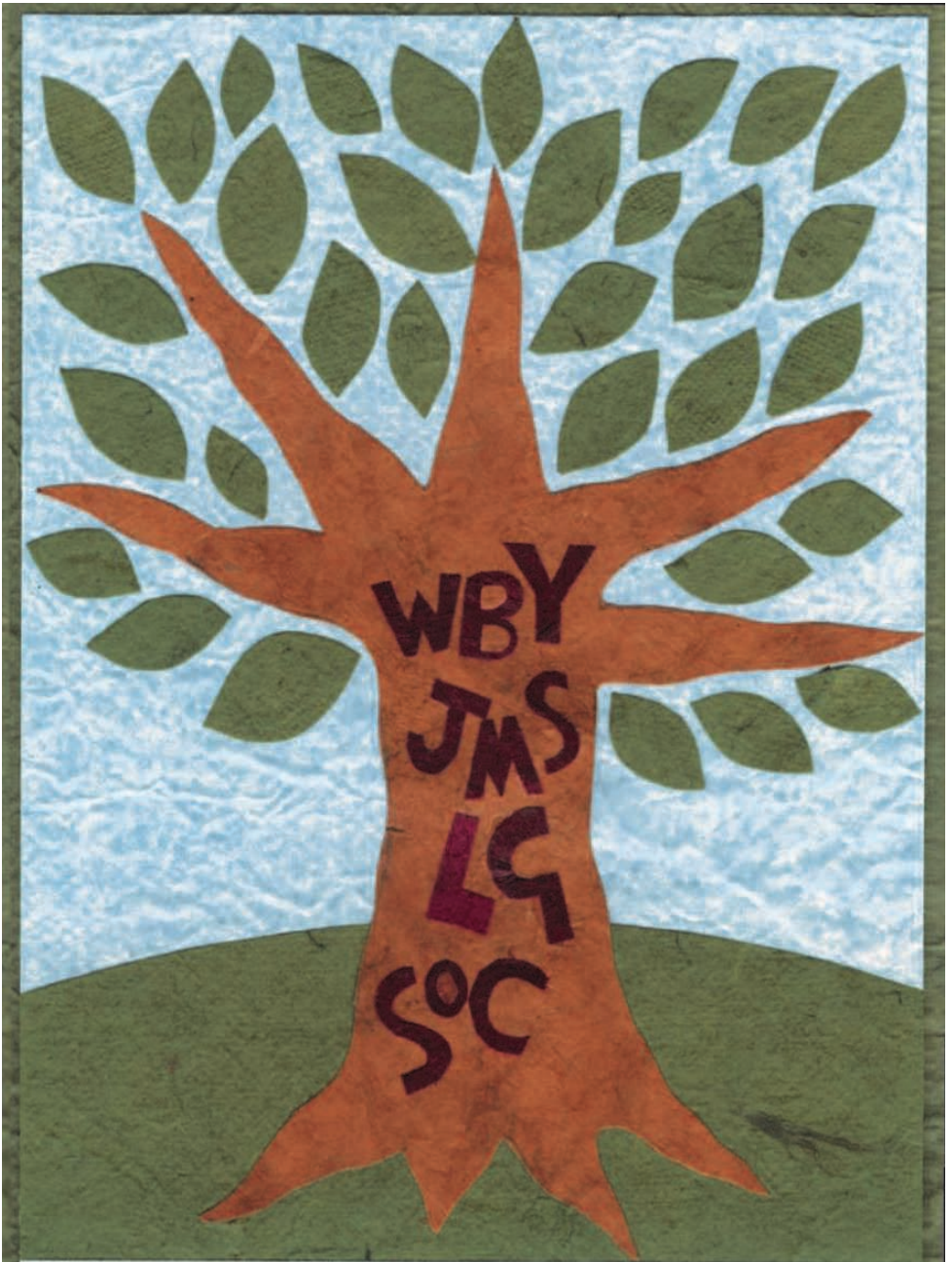
Seating is limited and the public will be accommodated on a first come first served basis. To avoid disappointment people are advised to come early.

**\*\*\* Advanced booking is required for events marked \*\*\* Tel: Coole Park 091 631804.  
If you have pre booked and you cannot attend please inform us  
so your place can be allocated to someone else.**



---

**Keep Galway Litter Free  
Coinnigh Gaillimh Saor ó Bhruscar**



*On the great stem, smooth as parchment, of a copper beech whose branches sweep the ground...many a friend who stayed here has carved the letters of his name.*

**... Lady Augusta Gregory**