

Designed By: Oliver Sheerin  
Date: 07/12/2020  
Checked By: \_\_\_\_\_  
Date: \_\_\_\_\_  
Approved By: \_\_\_\_\_  
Date: \_\_\_\_\_

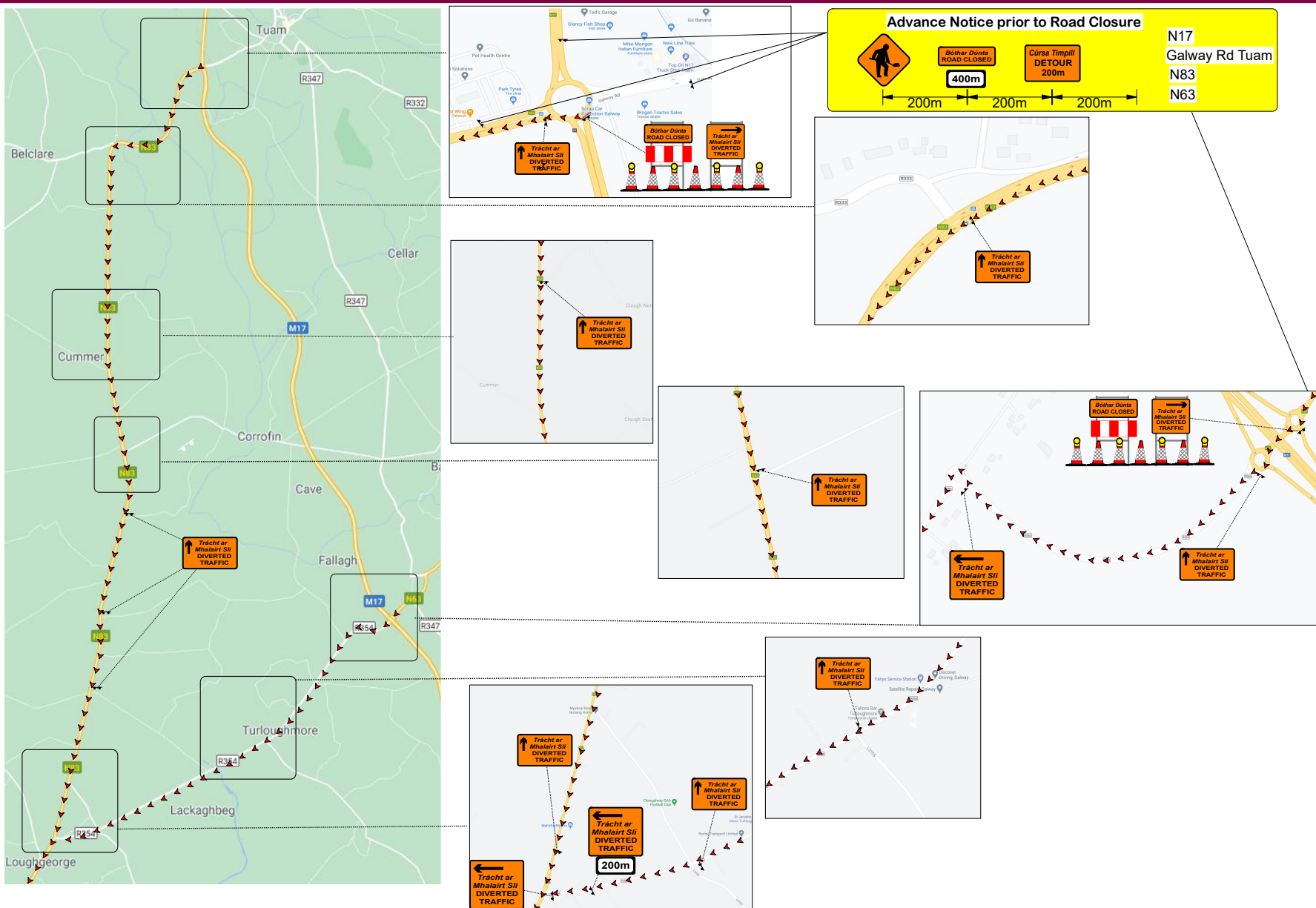
Drawing Title :

**M17 Road Closure  
between  
Junction 20 Kilmore (Tuam)  
and  
Junction 18 Rathmorrisy(M6)  
SOUTHBOUND**

Page One Of Two



**Legend**

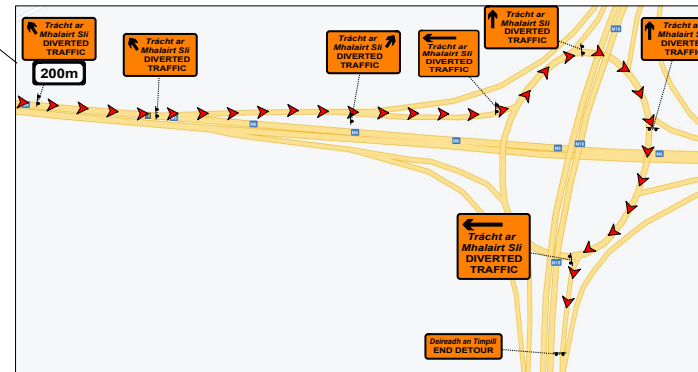
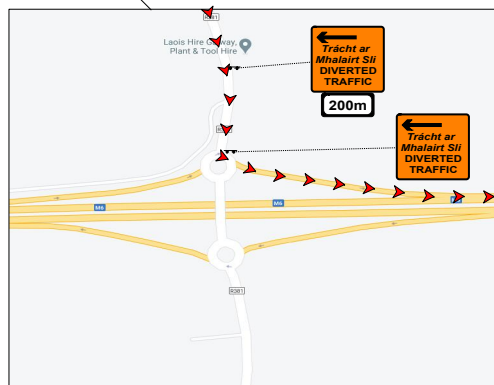
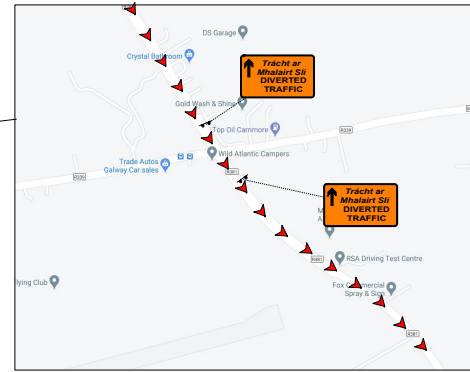
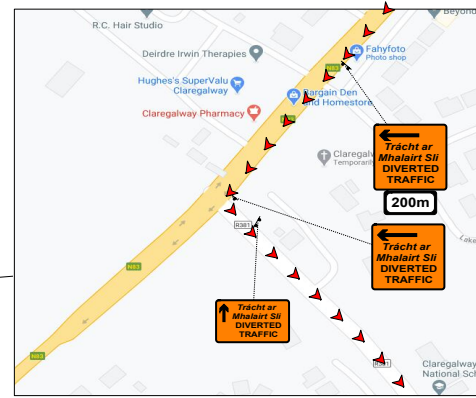


**MANIFEST**

SIGN													
CODE	WK 001	WK 090	WK 094	WK 091	WK 091	P 001	P 001	W 183	WK 001	WK 090	WK 094	P 001	WK 091
AMOUNT	3	3	3	3	11	1	3	2	1	1	3	2	2
Size	750mm							1200mm					

Designed By: Oliver Sheerin  
Date: 07/12/2020  
Checked By: \_\_\_\_\_  
Date: \_\_\_\_\_  
Approved By: \_\_\_\_\_  
Date: \_\_\_\_\_

Drawing Title :  
**M17 Road Closure  
between  
Junction 20 Kilmore (Tuam)  
and  
Junction 18 Rathmorrissey(M6)  
SOUTHBOUND**  
Page Two Of Two



**MANIFEST**

SIGN															
CODE				WK 091	WK 091	WK 092	P 001								
AMOUNT				6	5	1	2						2	1	
Size				750mm							1200mm				

**Legend**

Direction of Traffic

Sign Location