

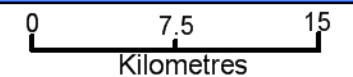
**MAP WE-1A : WIND FARM DEVELOPMENTS**

**Galway County Council Wind Energy Strategy 2011**



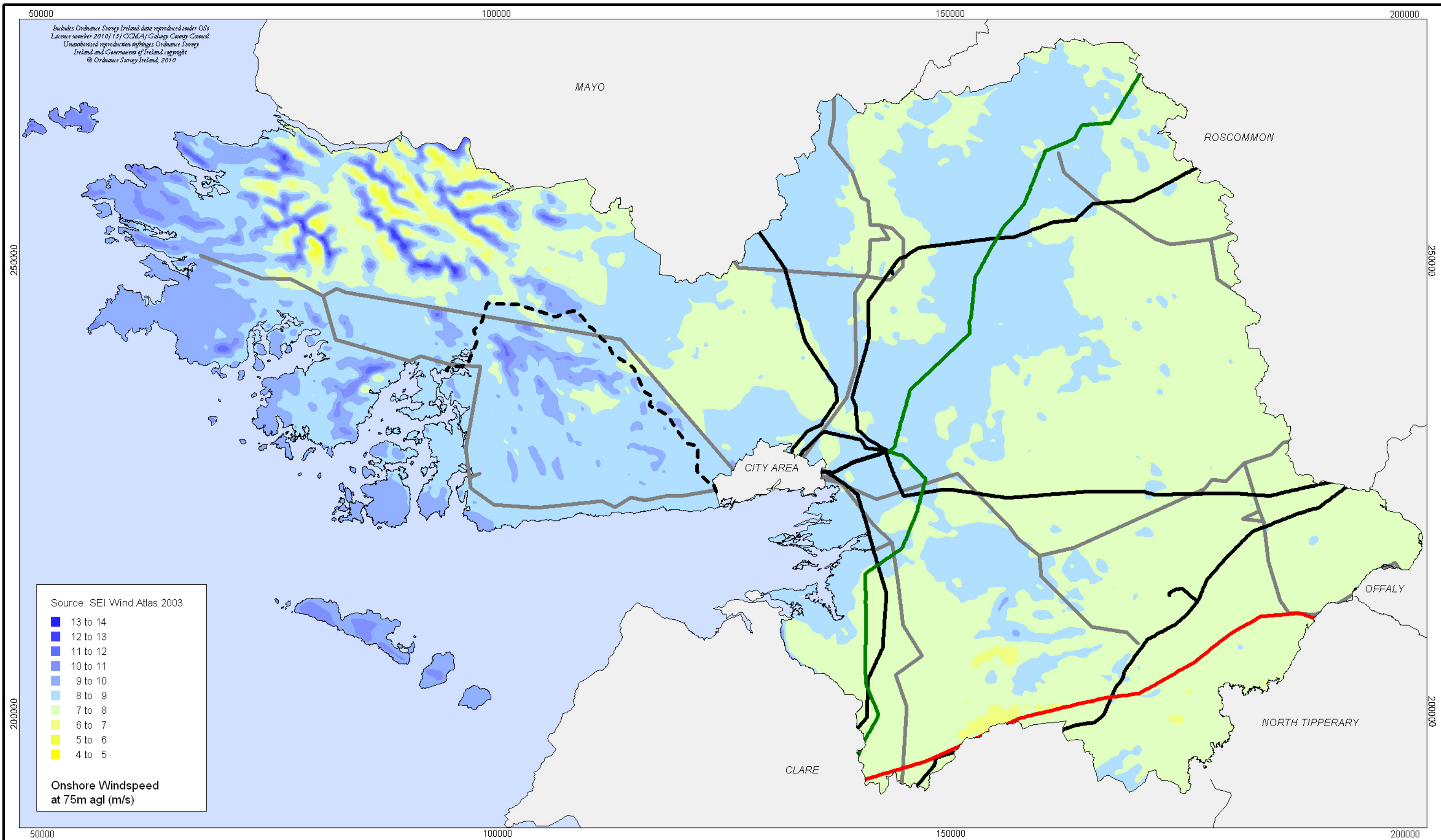
- Operational Wind Farm
- Permitted Wind Farm
- Pending Wind Farm
- Pending Wind Farm Foreshore Licence
- Wind Farm Gate 3 Node Assignment
- Existing Electricity Network
- Approved Electricity Network

SCALE: 1:400,000 [A3]



SOURCES:  
 ORDNANCE SURVEY IRELAND  
 GALWAY COUNTY COUNCIL  
 ELECTRICITY SUPPLY BOARD  
 EIRGRID  
 SUSTAINABLE ENERGY IRELAND





**MAP WE-1B : WIND RESOURCES AND TRANSMISSION NETWORK**

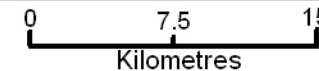
Galway County Council Wind Energy Strategy 2011



**Transmission Lines**

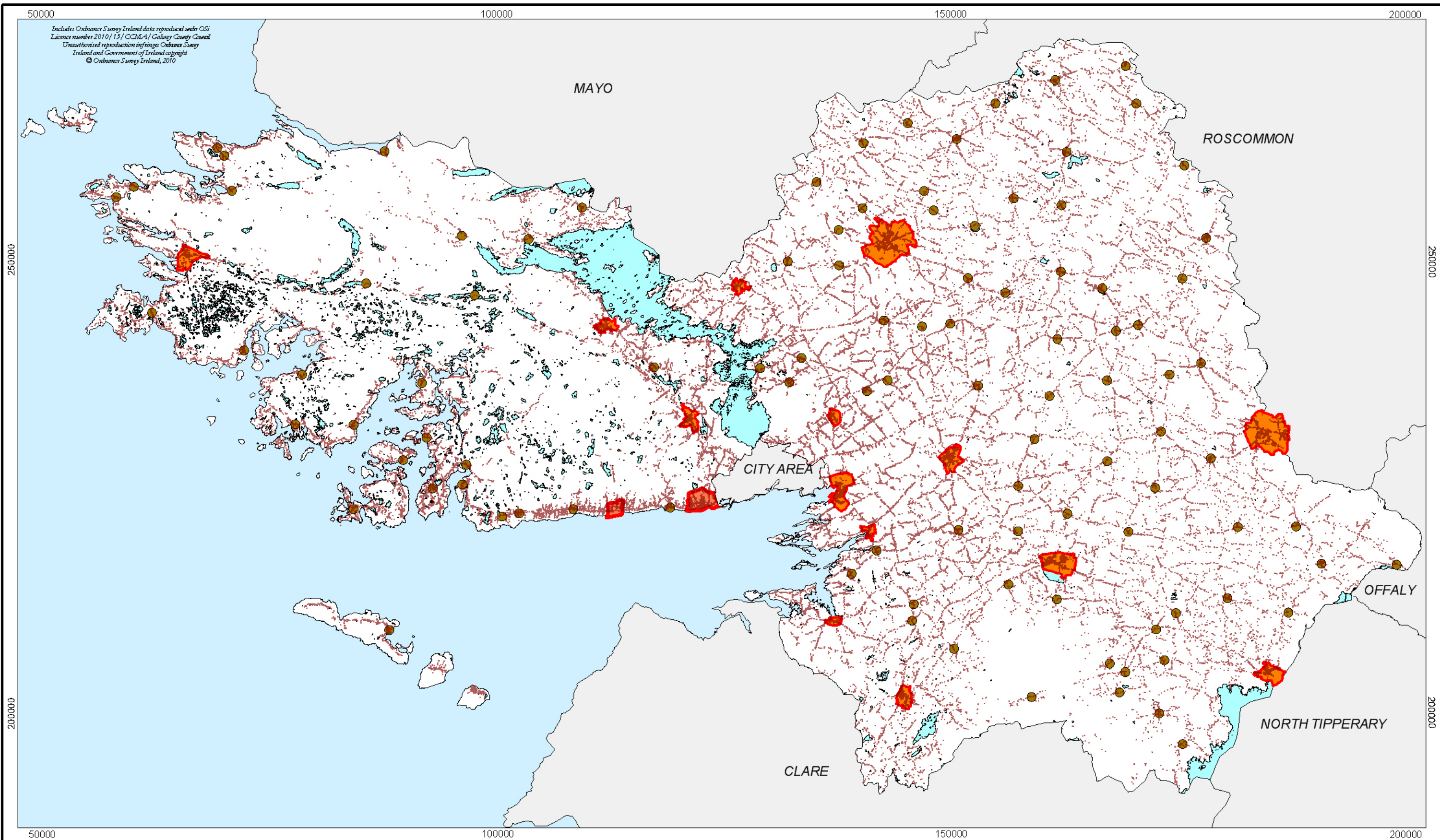
- 400kV
- 220kV
- 110kV
- 38kV
- - - - - Approved 110kV

SCALE: 1:400,000 [A3]



SOURCES:  
ORDNANCE SURVEY IRELAND  
GALWAY COUNTY COUNCIL  
ELECTRICITY SUPPLY BOARD  
EIRGRID  
SUSTAINABLE ENERGY IRELAND  
SEI IRELAND WIND ATLAS 2003





Includes Ordnance Survey Ireland data reproduced under OSI Licence number 2010/13 / CCMA / Galway County Council. Unauthorised reproduction infringes Ordnance Survey Ireland and Government of Ireland copyright. © Ordnance Survey Ireland, 2010

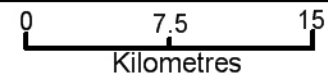
MAP WE-2A : URBAN AND RURAL SETTLEMENTS

Galway County Council Wind Energy Strategy 2011



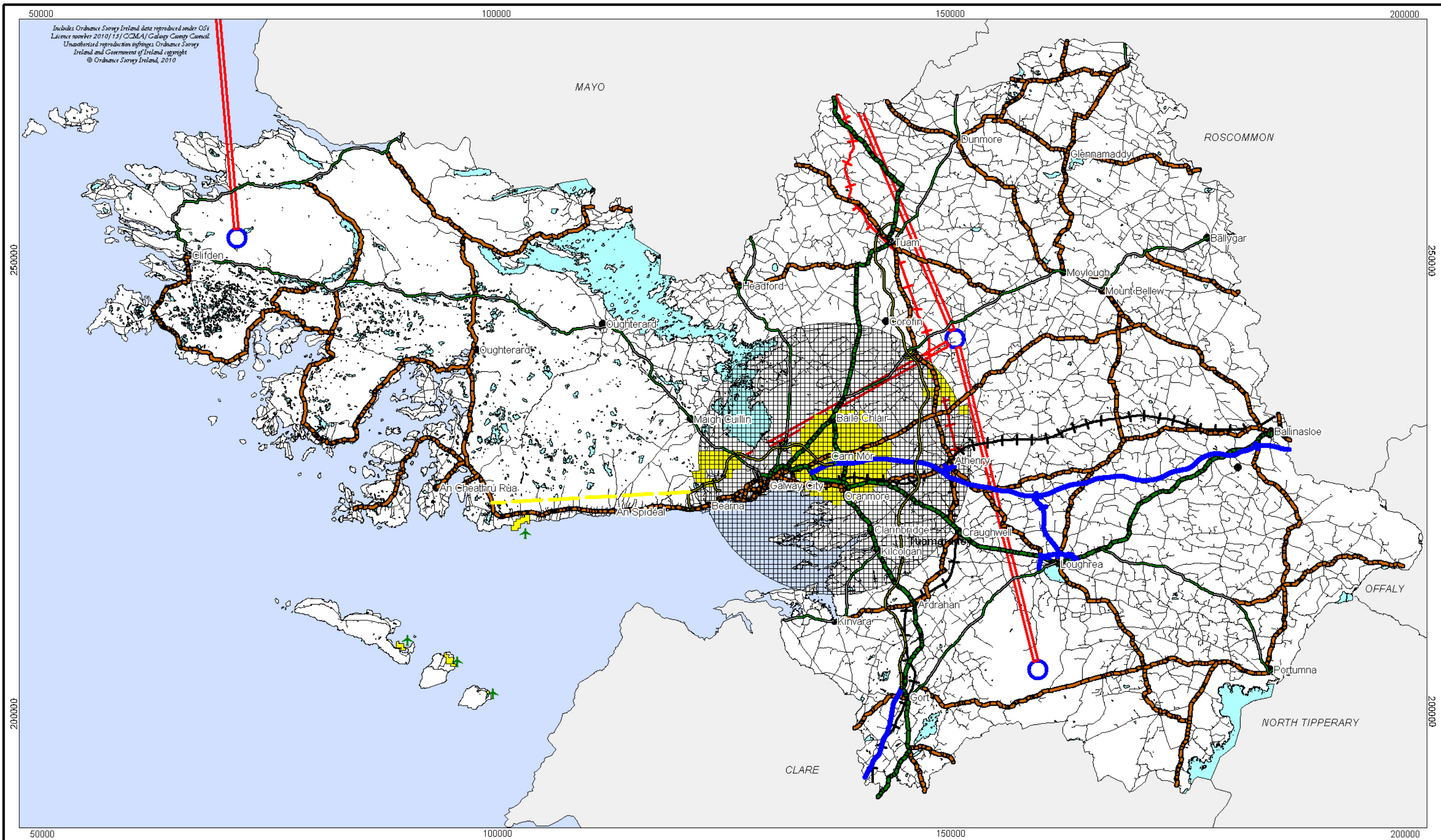
- ◻ An Post Residential Addresses
- ▭ Plan Boundaries
- Service Centres / Small Settlements

SCALE: 1:400,000 [A3]



SOURCES:  
ORDNANCE SURVEY IRELAND  
GALWAY COUNTY COUNCIL  
AN POST





Includes Ordnance Survey Ireland data reproduced under OSi Licence number 2010/15/CCMA/Galway County Council. Unauthorised reproduction infringes Ordnance Survey Ireland and Government of Ireland copyright. © Ordnance Survey Ireland, 2010

**MAP WE-2B : TRANSPORT AND UTILITY INFRASTRUCTURE**

**Galway County Council Wind Energy Strategy 2011**

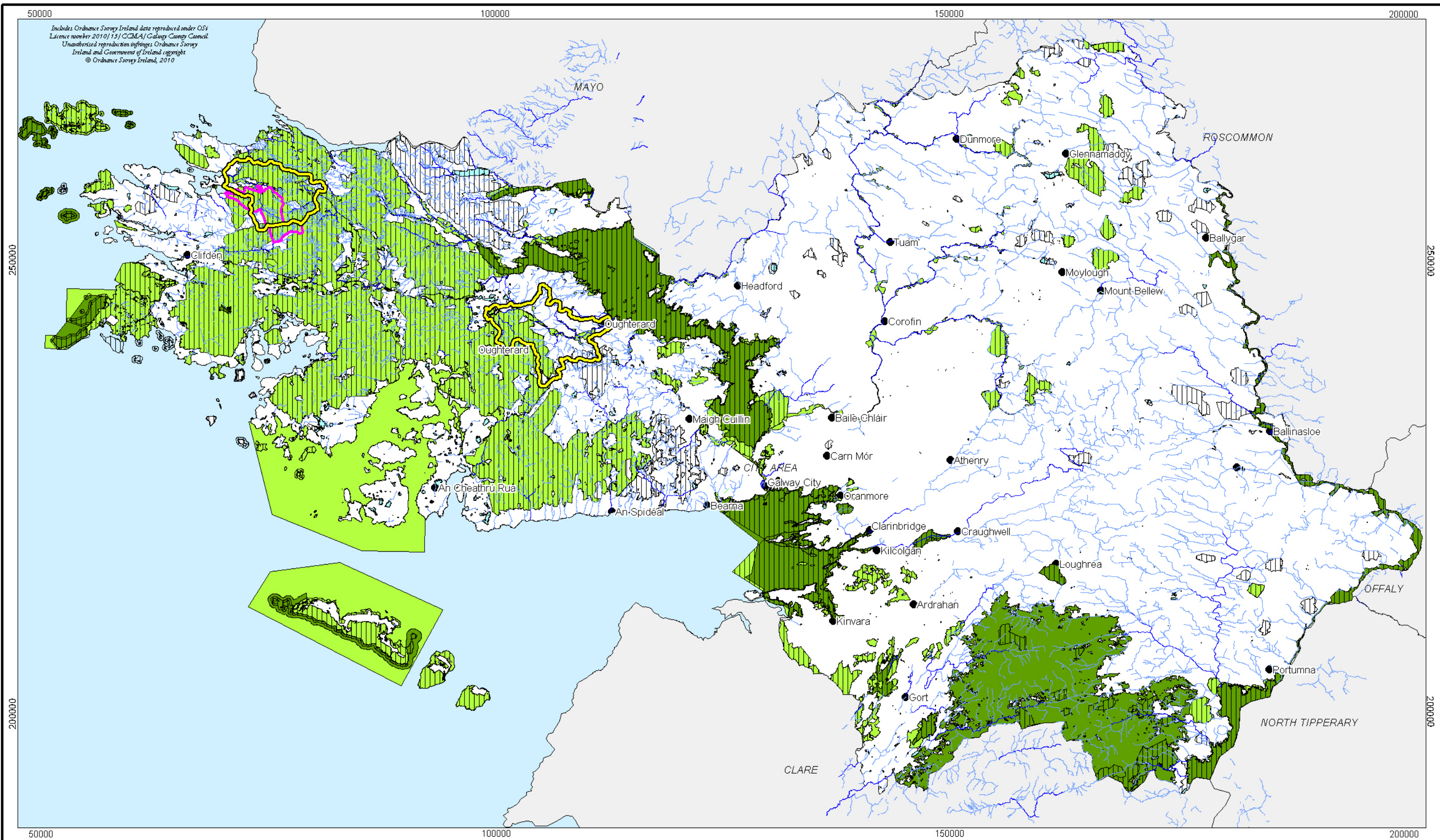


- |                          |                                      |                           |
|--------------------------|--------------------------------------|---------------------------|
| National Primary Roads   | Recently Built Motorway & Link Roads | Airports / Airstrips      |
| National Secondary Roads | Proposed Roads                       | Airport Exclusion Zone    |
| Regional Roads           | Indicative Road Corridor             | Airport Safeguarding Zone |
| Local Roads              | Existing Rail                        | CAMP Masts & LOS          |
|                          | Proposed Rail                        |                           |

SCALE: 1:400,000 [A3]

SOURCES:  
 ORDNANCE SURVEY IRELAND  
 NATIONAL ROADS AUTHORITY  
 IRISH AVIATION AUTHORITY  
 CAMP WEST  
 GALWAY COUNTY COUNCIL





Includes Ordnance Survey Ireland data reproduced under OSi Licence number 2010/15/CCMA/Galway County Council. Unauthorised reproduction infringes Ordnance Survey Ireland and Government of Ireland copyright. © Ordnance Survey Ireland, 2010

# MAP WE-3A : NATURAL HERITAGE DESIGNATIONS

Galway County Council Wind Energy Strategy 2011



- SPA
- SAC
- NHA

- Rivers
- Streams

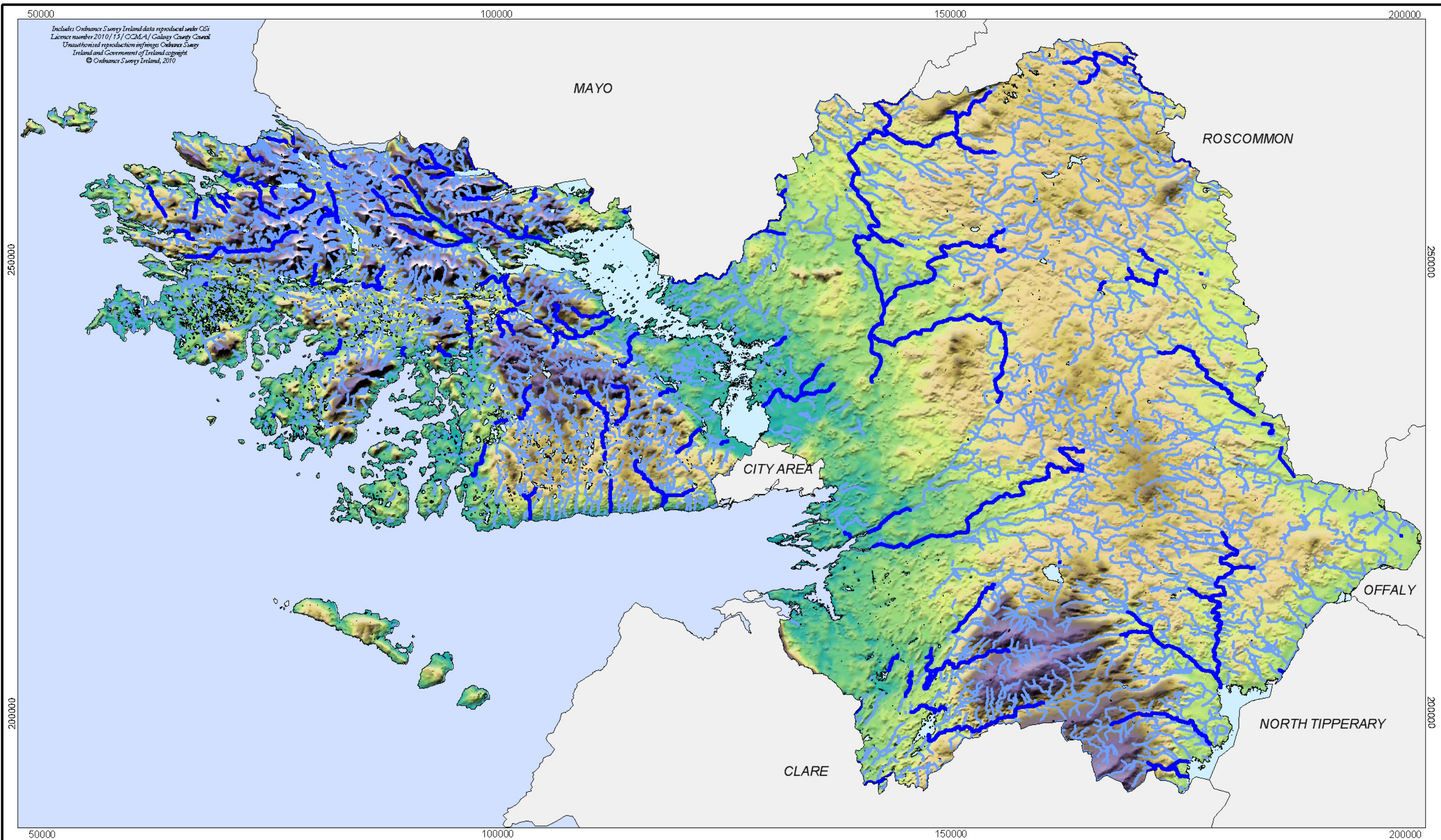
- Conemara National Park
- Freshwater Pearl Mussel Sub-Basin

SCALE: 1:400,000 [A3]



SOURCES:  
NATIONAL PARKS & WILDLIFE SERVICE  
ORDNANCE SURVEY IRELAND  
GALWAY COUNTY COUNCIL









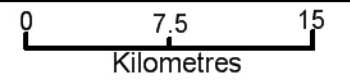
**MAP WE-3B : TOPOGRAPHY AND WATERBODIES**

Galway County Council Wind Energy Strategy 2011



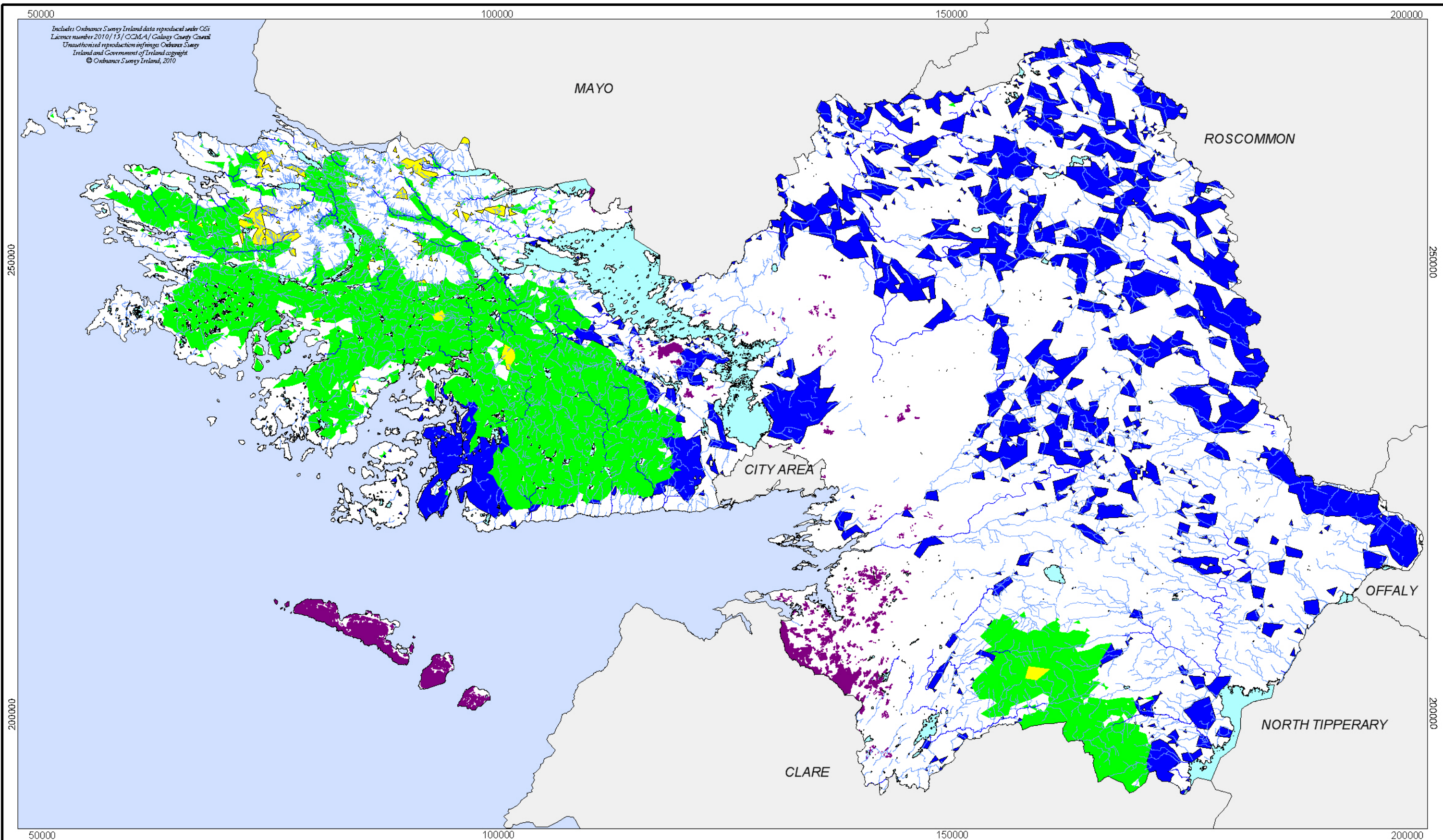
-  Galway Bay & Ocean
-  Lakes
-  Rivers
-  Streams

SCALE: 1:400,000 [A3]



SOURCES:  
ORDNANCE SURVEY IRELAND  
GALWAY COUNTY COUNCIL












Includes Ordnance Survey Ireland data reproduced under OSI Licence number 2010/13 / CCMA / Galway County Council. Unauthorised reproduction infringes Ordnance Survey Ireland and Government of Ireland copyright. © Ordnance Survey Ireland, 2010

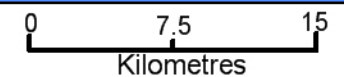
# MAP WE-3C : PEATLANDS AND LIMESTONE PAVEMENT

Galway County Council Wind Energy Strategy 2011



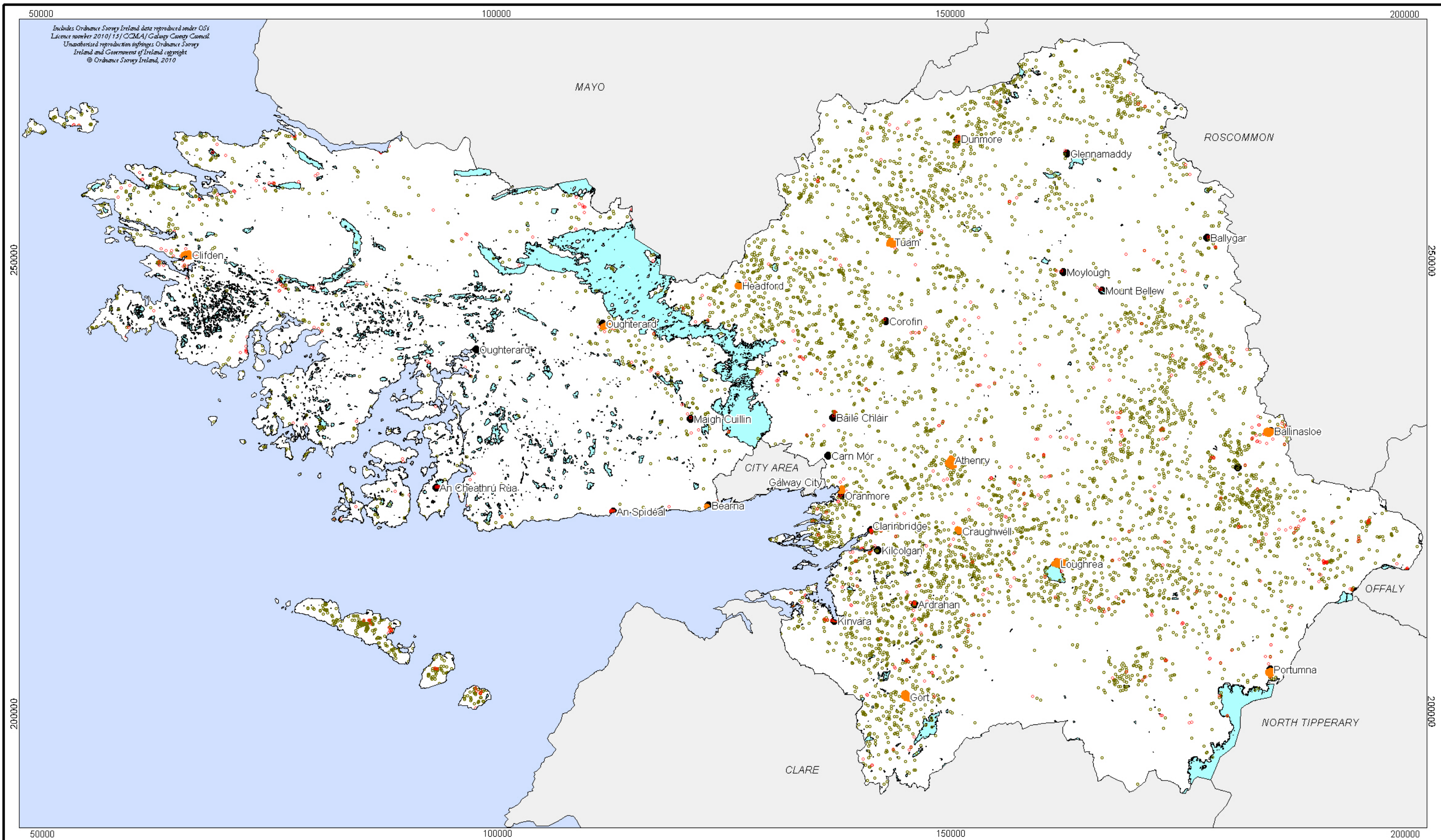
- |   |                                |   |                    |
|---|--------------------------------|---|--------------------|
|  | Low Level Atlantic Blanket Bog |  | Limestone Pavement |
|  | Raised Bog                     |  | Lakes              |
|  | High Level Montane Bog         |  | Rivers             |
|   |                                |  | Streams            |

SCALE: 1:400,000 [A3]



SOURCES:  
ORDNANCE SURVEY IRELAND  
UNIVERSITY COLLEGE DUBLIN  
ENVIRONMENTAL PROTECTION AGENCY





Includes Ordnance Survey Ireland data reproduced under OSI Licence number 2010/15/CCMA/Galway County Council. Unauthorised reproduction infringes Ordnance Survey Ireland and Government of Ireland copyright. © Ordnance Survey Ireland, 2010

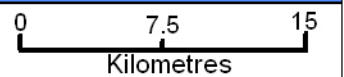
# MAP WE-3D : BUILT HERITAGE

# Galway County Council Wind Energy Strategy 2011



- Recorded Monuments and Places (RMP)
- Protected Structures (RPS)
- Architectural Conservation Areas (ACAs)

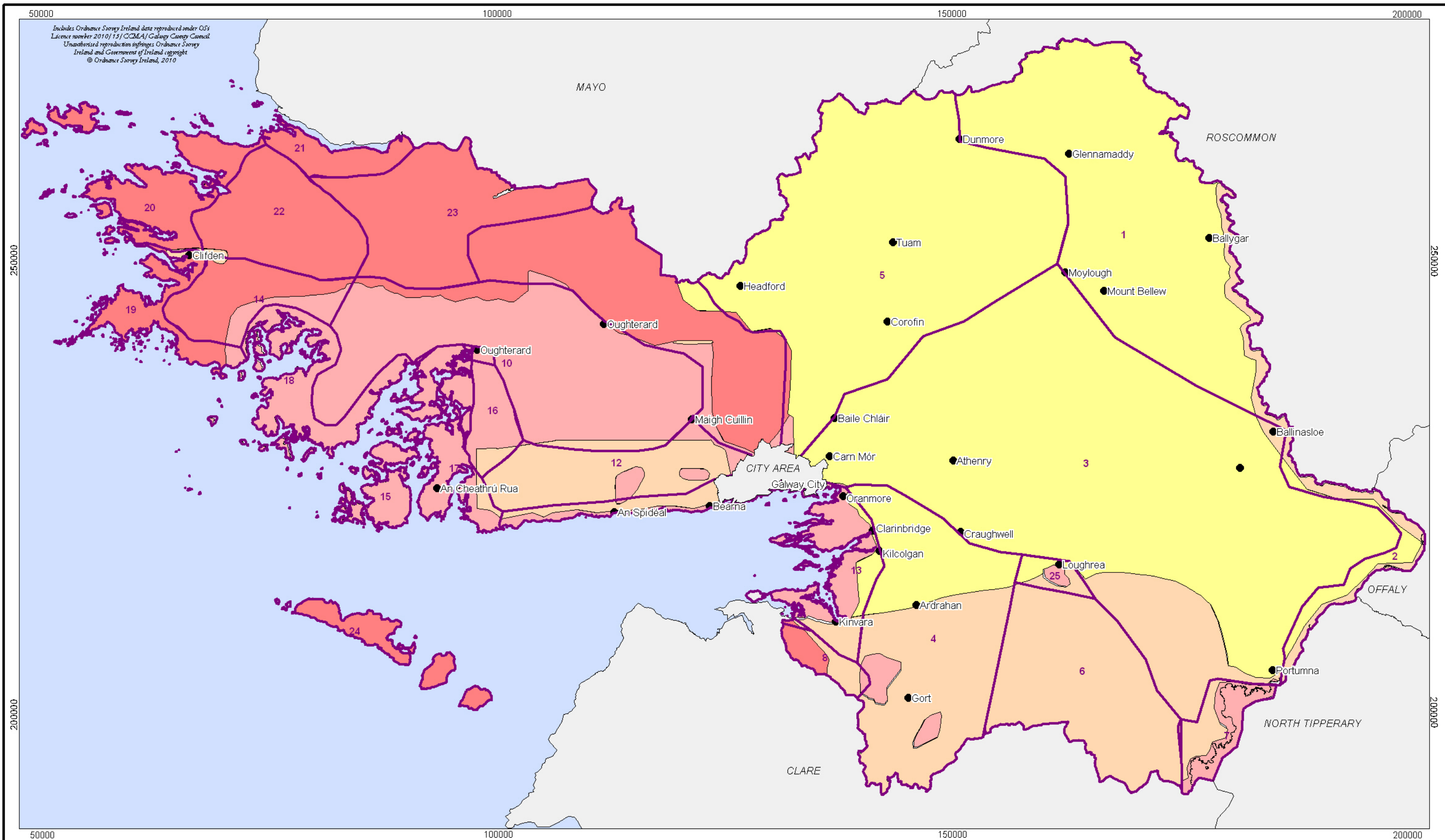
SCALE: 1:400,000 [A3]



SOURCES:  
 ORDNANCE SURVEY IRELAND  
 GALWAY COUNTY COUNCIL  
 HERITAGE COUNCIL  
 DEPARTMENT OF ENVIRONMENT,  
 HERITAGE AND LOCAL GOVERNMENT







**MAP WE-4A : LANDSCAPE VALUE AND CHARACTER AREAS**

**Galway County Council Wind Energy Strategy 2011**



**Landscape Value Rating:**

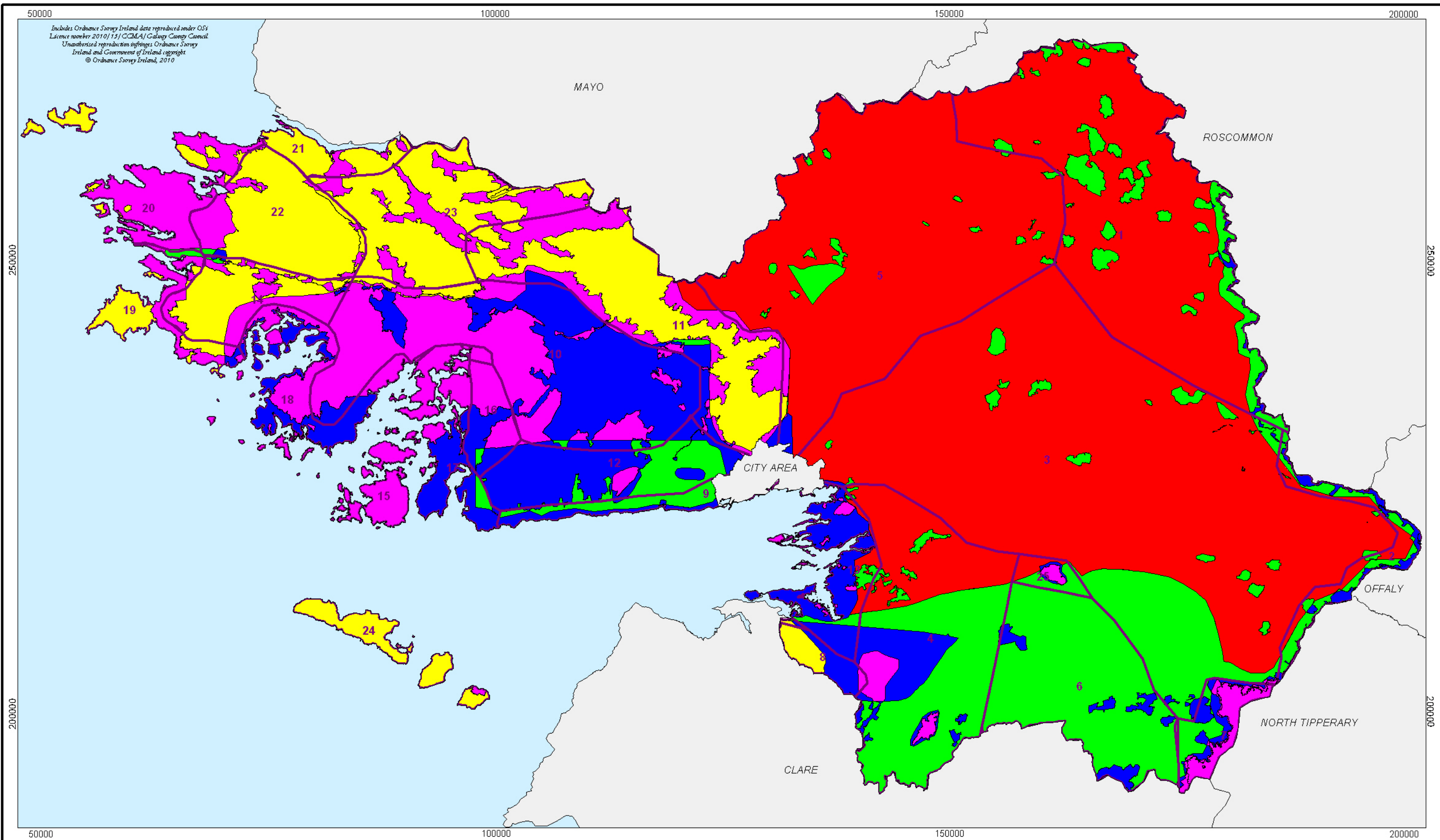
<span style="display:inline-block; width:15px; height:15px; background-color:red; border:1px solid black;"></span> Outstanding
<span style="display:inline-block; width:15px; height:15px; background-color:lightcoral; border:1px solid black;"></span> High
<span style="display:inline-block; width:15px; height:15px; background-color:orange; border:1px solid black;"></span> Medium
<span style="display:inline-block; width:15px; height:15px; background-color:yellow; border:1px solid black;"></span> Low

**Landscape Character Areas :**

1 - North east Galway (Balinasloe to Ballymoe)	10 - East Connemara Mountains (Moycullen, Recess to Glinsk)	17 - Carraroe (Cashla Bay to Glencoh)
2 - Shannon and Suck River Valley between Portumna and Ballinasloe	11 - Lough Corrib and environs	18 - Bertraghbay bay and eastern banks
3 - East central Galway (Athenry, Ballinasloe to Portumna)	12 - South foothills of east Connemara Mountains (west of Salthill to Rossaveel)	19 - West Coast (Clifteen bay to mouth of Killary Harbour)
4 - Southeast Galway (Clarínbridge to Gort)	13 - East Galway Bay (Oranmore to Kinvarra Bay and inland to N18 road)	20 - West Coast (Clifden to mouth of Killary Harbour)
5 - Northeast Galway (Tuam environs)	14 - West Connemara	21 - Killary Harbour and southern banks
6 - Slieve Aughty Mountains	15 - Lettermore and Gorumna Islands	22 - Connemara National Park (including Lough Fee, Lough Inagh and Derryclare Lough)
7 - Northwest Loch Derg	16 - West foothills of east Connemara Mountains (Glencimurrian Lough environs)	23 - Joyce's Country (including Lehanagh Loughs and south Lough Mask)
8 - Lower Burren (Co. Galway portion)		24 - Aran Islands
9 - Inveran to Galway City coastline		25 - Lough Rea

**SCALE: 1:400,000 [A3]**

**SOURCES:**  
 ORDNANCE SURVEY IRELAND  
 GALWAY COUNTY COUNCIL  
 LANDSCAPE AND LANDSCAPE CHARACTER ASSESSMENT FOR GALWAY COUNTY 2002  
 GALWAY COUNTY DEVELOPMENT PLAN 2009-2015



# MAP WE-4B : LANDSCAPE SENSITIVITY AND CHARACTER AREAS

Galway County Council Wind Energy Strategy 2011



**Landscape Sensitivity**

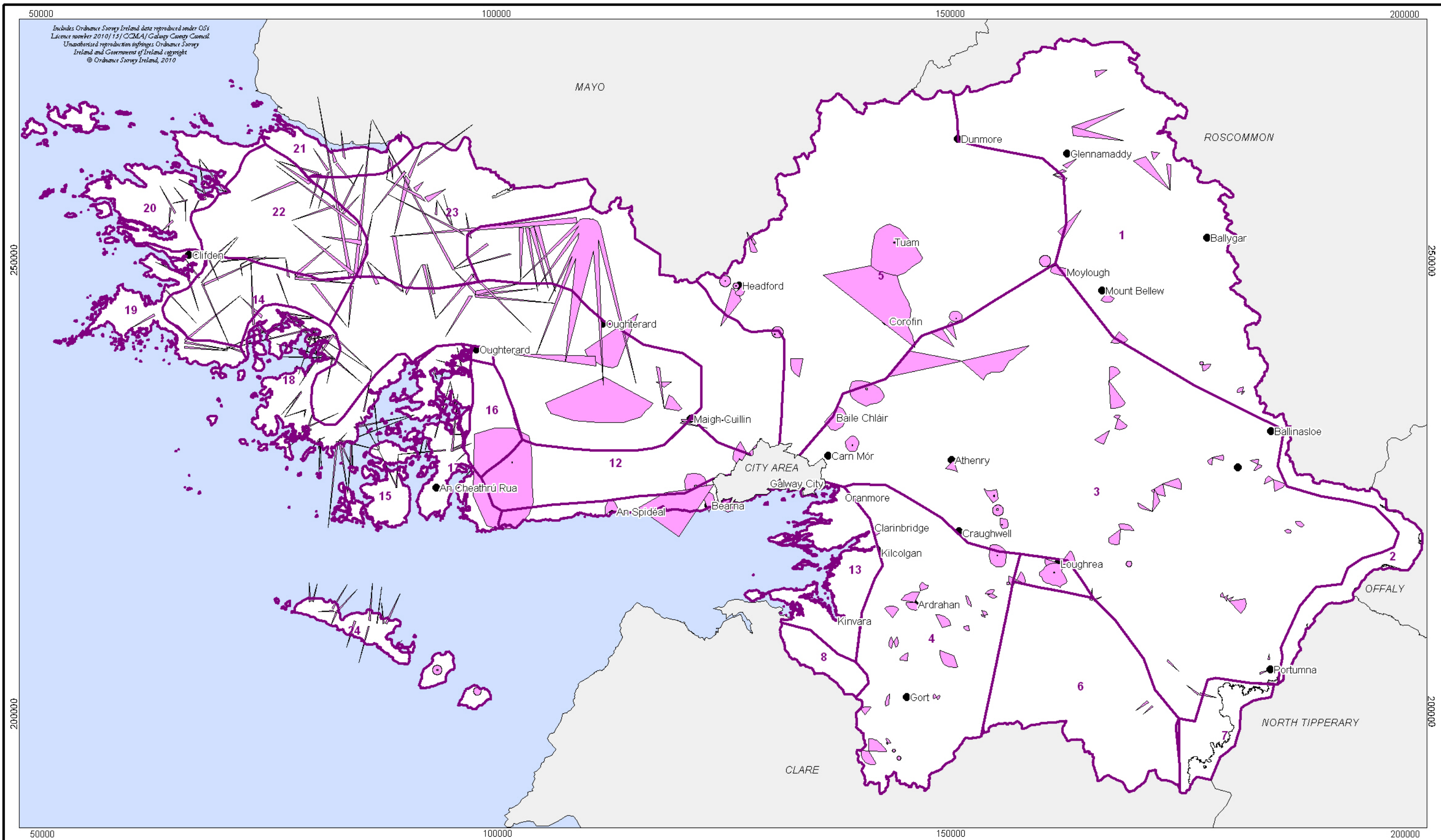
- Class 1 - low
- Class 2 - Moderate
- Class 3 - High
- Class 4 - Special
- Class 5 - Unique

**Landscape Character Areas :**

- |  |  |   |
|--|--|---|
| <ul style="list-style-type: none"> <li>1 - North east Galway (Balinasloe to Ballymoe)</li> <li>2 - Shannon and Suck River Valley between Portumna and Ballinasloe</li> <li>3 - East central Galway (Athenry, Ballinasloe to Portumna)</li> <li>4 - Southeast Galway (Clarinbridge to Gort)</li> <li>5 - Northeast Galway (Tuam environs)</li> <li>6 - Slieve Aughty Mountains</li> <li>7 - Northwest Loch Derg</li> <li>8 - Lower Burren (Co. Galway portion)</li> <li>9 - Inveran to Galway City coastline</li> </ul> | <ul style="list-style-type: none"> <li>10 - East Connemara Mountains (Moycullen, Recess to Glinsk)</li> <li>11 - Lough Corrib and environs</li> <li>12 - South foothills of east Connemara Mountains (west of Salthill to Rossaveel)</li> <li>13 - East Galway Bay (Oranmore to Kinvarra Bay and inland to N18 road)</li> <li>14 - West Connemara</li> <li>15 - Lettermore and Gorumna Islands</li> <li>16 - West foothills of east Connemara Mountains (Glenicmurrin Lough environs)</li> </ul> | <ul style="list-style-type: none"> <li>17 - Carraroe (Cashla Bay to Glencoh)</li> <li>18 - Bertraghboy bay and eastern banks</li> <li>19 - West Coast (Gorteen bay to Clifden)</li> <li>20 - West Coast (Clifden to mouth of Killary Harbour)</li> <li>21 - Killary Harbour and southern banks</li> <li>22 - Connemara National Park (including Lough Fee, Lough Inagh and Derryclare Lough)</li> <li>23 - Joyce's Country (including Lehanagh Loughs and south Lough Mask)</li> <li>24 - Aran Islands</li> <li>25 - Lough Rea</li> </ul> |
|--|--|---|

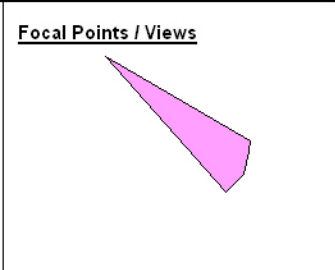
SCALE: 1:400,000 [A3]

SOURCES:  
 ORDNANCE SURVEY IRELAND  
 GALWAY COUNTY COUNCIL  
 LANDSCAPE AND LANDSCAPE CHARACTER ASSESSMENT FOR GALWAY COUNTY COUNCIL  
 GALWAY COUNTY DEVELOPMENT PLAN 2009-2015



# MAP WE-4C : VIEWS AND PROSPECTS

Galway County Council Wind Energy Strategy 2011



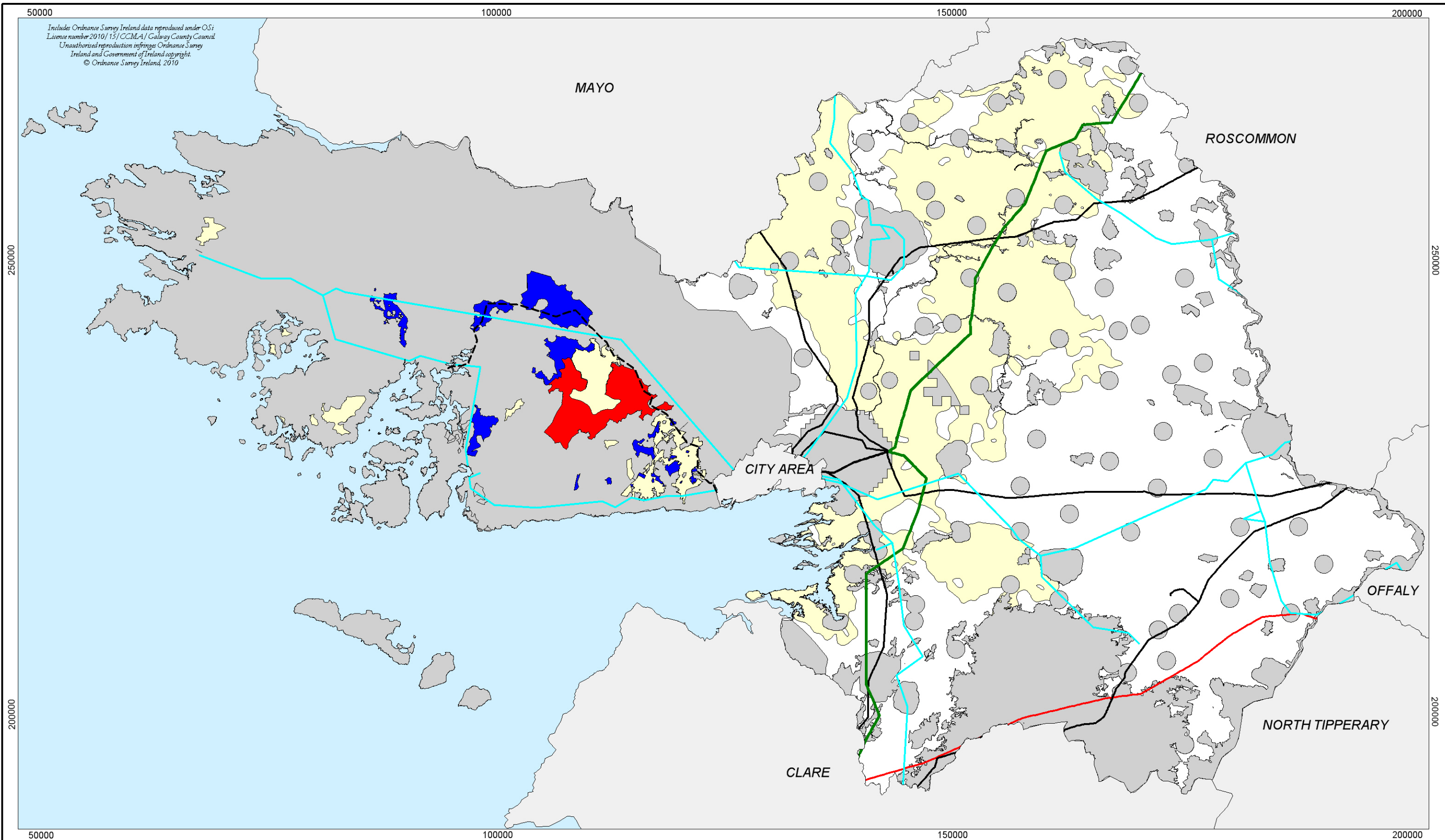
- Focal Points / Views**
- Landscape Character Areas :**
- 1 - North east Galway (Ballinasloe to Ballymoe)
  - 2 - Shannon and Suck River Valley between Portumna and Ballinasloe
  - 3 - East central Galway (Athenry, Ballinasloe to Portumna)
  - 4 - Southeast Galway (Clarinbridge to Gort)
  - 5 - Northeast Galway (Tuam environs)
  - 6 - Slieve Aughty Mountains
  - 7 - Northwest Loch Derg
  - 8 - Lower Burren (Co. Galway portion)
  - 9 - Inveran to Galway City coastline
  - 10 - East Connemara Mountains (Moycullen, Recess to Glinsk)
  - 11 - Lough Corrib and environs
  - 12 - South foothills of east Connemara Mountains (west of Salthill to Rossaveel)
  - 13 - East Galway Bay (Oranmore to Kinvarra Bay and inland to N18 road)
  - 14 - West Connemara
  - 15 - Lettermore and Gorumna Islands
  - 16 - West foothills of east Connemara Mountains (Glenicmurrin Lough environs)
  - 17 - Carraroe (Cashla Bay to Glencoh)
  - 18 - Bertraghboy bay and eastern banks
  - 19 - West Coast (Gorteen bay to Clifden)
  - 20 - West Coast (Clifden to mouth of Killary Harbour)
  - 21 - Killary Harbour and southern banks
  - 22 - Connemara National Park (including Lough Fee, Lough Inagh and Derryclare Lough)
  - 23 - Joyce's Country (including Lehanagh Loughs and south Lough Mask)
  - 24 - Aran Islands
  - 25 - Lough Rea

**SCALE: 1:400,000 [A3]**

**SOURCES:**

- ORDNANCE SURVEY IRELAND
- GALWAY COUNTY COUNCIL
- LANDSCAPE AND LANDSCAPE CHARACTER ASSESSMENT FOR GALWAY COUNTY COUNCIL
- GALWAY COUNTY DEVELOPMENT PLAN 2009-2015

Includes Ordnance Survey Ireland data reproduced under OSI Licence number 2010/15/CCMA/Galway County Council. Unauthorised reproduction infringes Ordnance Survey Ireland and Government of Ireland copyright. © Ordnance Survey Ireland, 2010



**MAP WE-5A : STRATEGIC WIND FARM DEVELOPMENT AREAS AND TRANSMISSION NETWORK**

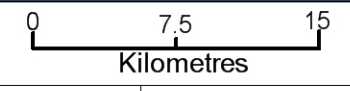
Galway County Council Wind Energy Strategy 2011



- SA - Strategic Areas
- AP - Acceptable in Principle Areas
- OC - Open to Consideration Areas
- NP - Not Normally Permissible Areas
- LW - Low Wind Speed

- Transmission Lines**
- 400kV
  - 220kV
  - 110kV
  - 38kV
  - - - - - Approved 110kV

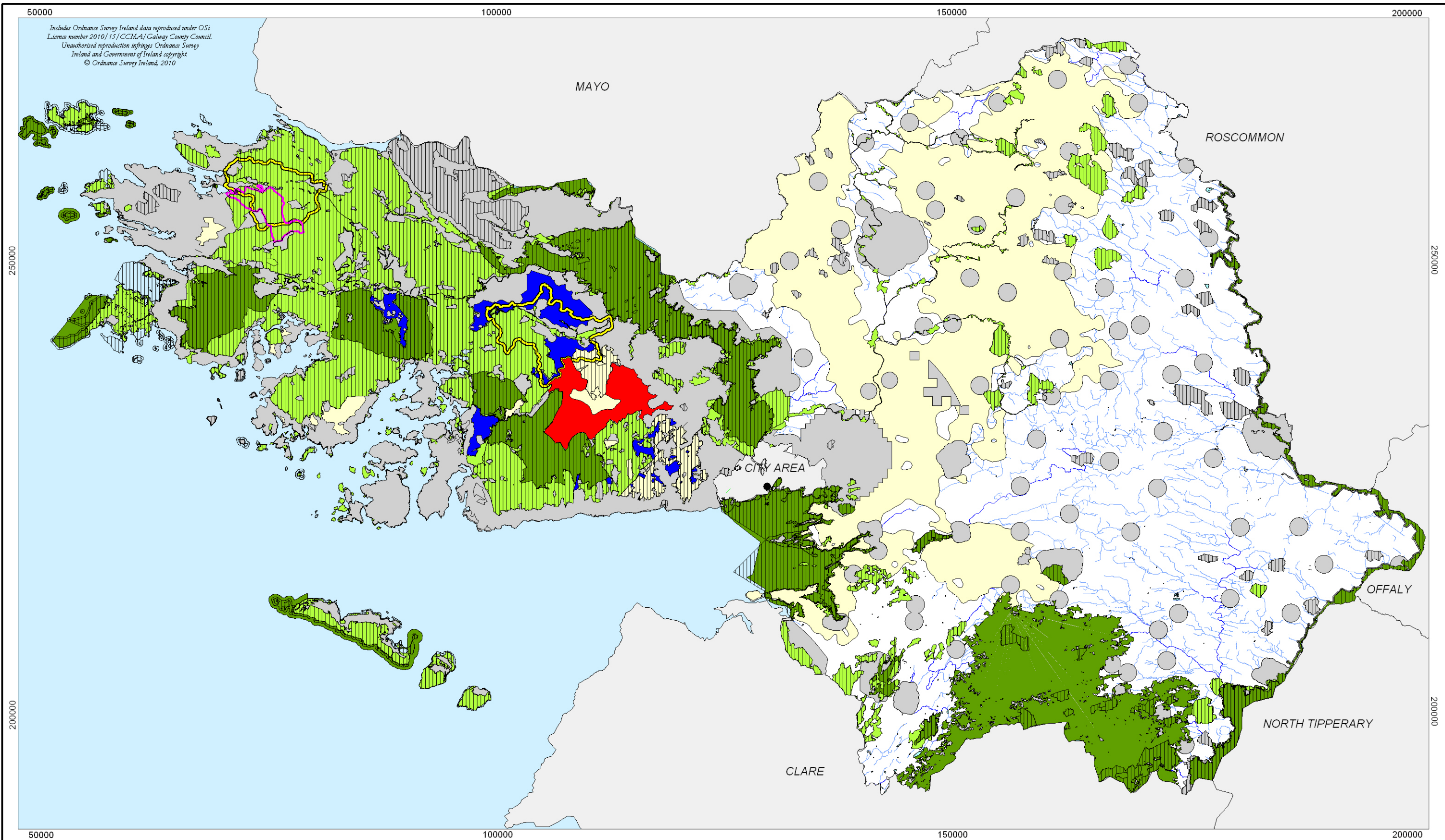
SCALE: 1:400,000 [A3]



SOURCES:  
ORDNANCE SURVEY IRELAND  
GALWAY COUNTY COUNCIL  
ELECTRICITY SUPPLY BOARD

**Adopted 26th Sep 2011**





Includes Ordnance Survey Ireland data reproduced under OSI Licence number 2010/15/CCMA/Galway County Council. Unauthorised reproduction infringes Ordnance Survey Ireland and Government of Ireland copyright. © Ordnance Survey Ireland, 2010

**MAP WE- 5B : STRATEGIC WIND FARM DEVELOPMENT AREAS AND NATURAL HERITAGE DESIGNATIONS**

**Galway County Council Wind Energy Strategy 2011**



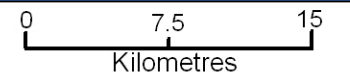
- SA - Strategic Areas
- AP - Acceptable in Principle Areas
- OC - Open to Consideration Areas
- NP - Not Normally Permissible Areas
- LW - Low Wind Speed

- SPA
- SAC
- NHA

- Rivers
- Streams

- Conemara National Park
- Freshwater Pearl Mussel Sub-Basin

SCALE: 1:400,000 [A3]



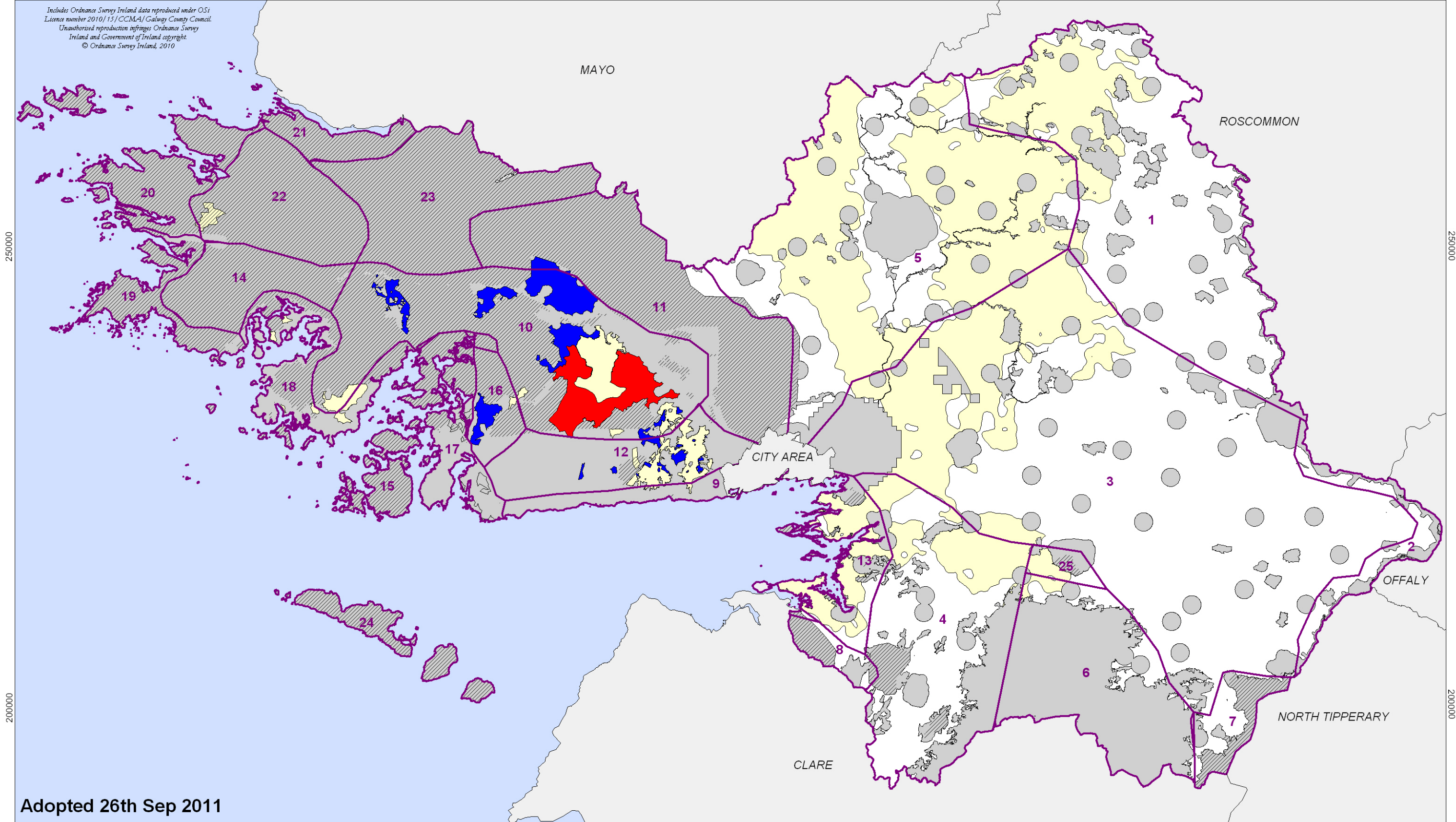
SOURCES:  
NATIONAL PARKS & WILDLIFE SERVICE  
ORDNANCE SURVEY IRELAND  
GALWAY COUNTY COUNCIL

**Adopted : 26th Sep 2011**



50000 100000 150000 200000

Includes Ordnance Survey Ireland data reproduced under OSI Licence number 2010/15/CCMA/Galway County Council. Unauthorised reproduction infringes Ordnance Survey Ireland and Government of Ireland copyright. © Ordnance Survey Ireland, 2010



Adopted 26th Sep 2011

50000 100000 150000 200000

**MAP WE-5C : STRATEGIC WIND FARM DEVELOPMENT AREAS AND LANDSCAPE CHARACTER AREAS Galway County Council Wind Energy Strategy 2011**



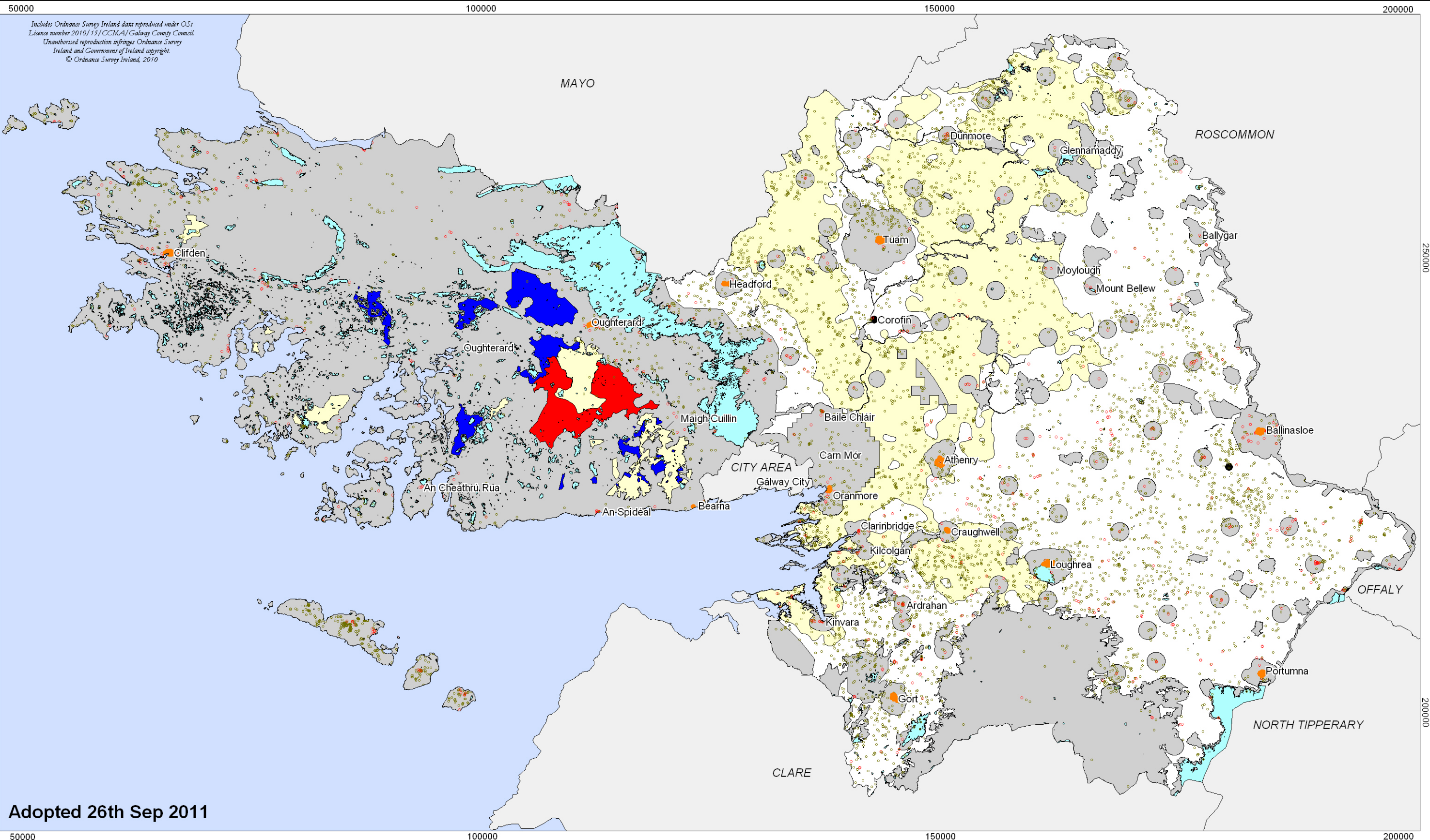
	SA - Strategic Areas
	AP - Acceptable in Principle Areas
	OC - Open to Consideration Areas
	NP - Not Normally Permissible Areas
	LW - Low Wind Speed
	Landscape Sensitivity Class 4 & 5

**Landscape Character Areas :**

- |  |  |  |
|--|--|--|
| 1 - North east Galway (Balinasloe to Ballymoe)                     | 10 - East Connemara Mountains (Moycullen, Recess to Glinsk)                      | 17 - Carraroe (Cashla Bay to Glencoh)  |
| 2 - Shannon and Suck River Valley between Portumna and Ballinasloe | 11 - Lough Corrib and environs   | 18 - Bertraghboy bay and eastern banks   |
| 3 - East central Galway (Athenry, Ballinasloe to Portumna)         | 12 - South foothills of east Connemara Mountains (west of Salthill to Rossaveel) | 19 - West Coast (Gorteen bay to Clifden)   |
| 4 - Southeast Galway (Clarinbridge to Gort)                        | 13 - East Galway Bay (Oranmore to Kinvarra Bay and inland to N18 road)           | 20 - West Coast (Clifden to mouth of Killary Harbour)                                |
| 5 - Northeast Galway (Tuam environs)                               | 14 - West Connemara  | 21 - Killary Harbour and southern banks  |
| 6 - Slieve Aughty Mountains  | 15 - Lettermore and Gorumna Islands  | 22 - Connemara National Park (including Lough Fee, Lough Inagh and Derryclare Lough) |
| 7 - Northwest Loch Derg  | 16 - West foothills of east Connemara Mountains (Glenicmurrin Lough environs)    | 23 - Joyces Country (including Lehanagh Loughs and south Lough Mask)                 |
| 8 - Lower Burren (Co. Galway portion)                              |  | 24 - Aran Islands  |
| 9 - Inveran to Galway City coastline                               |  | 25 - Lough Rea   |

SCALE: 1:400,000 [A3]

SOURCES:  
 ORDNANCE SURVEY IRELAND  
 GALWAY COUNTY COUNCIL  
 LANDSCAPE AND LANDSCAPE CHARACTER ASSESSMENT FOR GALWAY COUNTY 2002  
 GALWAY COUNTY DEVELOPMENT PLAN 2009-2015



Adopted 26th Sep 2011

**MAP WE-5D : STRATEGIC WIND FARM DEVELOPMENT AREAS AND BUILT HERITAGE**

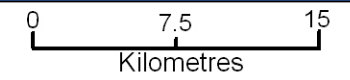
**Galway County Council Wind Energy Strategy 2011**



- SA - Strategic Areas
- AP - Acceptable in Principle Areas
- OC - Open to Consideration Areas
- NP - Not Normally Permissible Areas
- LW - Low Wind Speed

- Recorded Monuments and Places (RMP)
- Protected Structures (RPS)
- Architectural Conservation Areas (ACAs)

SCALE: 1:400,000 [A3]



SOURCES:  
 ORDNANCE SURVEY IRELAND  
 GALWAY COUNTY COUNCIL  
 HERITAGE COUNCIL  
 DEPARTMENT OF ENVIRONMENT,  
 HERITAGE AND LOCAL GOVERNMENT



50000 100000 150000 200000

Includes Ordnance Survey Ireland data reproduced under OSi  
License number 2010/15/CCMA/Galway County Council  
Unauthorized reproduction infringe Ordnance Survey  
Ireland and Government of Ireland copyright.  
© Ordnance Survey Ireland, 2010

250000

250000

200000

200000

MAYO

ROSCOMMON

CITY AREA

OFFALY

NORTH TIPPERARY

CLARE

Adopted 26th Sep 2011

50000 100000 150000 200000

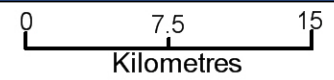
**MAP WE-5E : STRATEGIC WIND FARM DEVELOPMENT AREAS AND URBAN AND RURAL SETTLEMENTS** Galway County Council Wind Energy Strategy 2011



- SA - Strategic Areas
- AP - Acceptable in Principle Areas
- OC - Open to Consideration Areas
- NP - Not Normally Permissible Areas
- LW - Low Wind Speed

- An post residential postal addresses
- Plan Boundaries
- Service Centres / Small Settlements

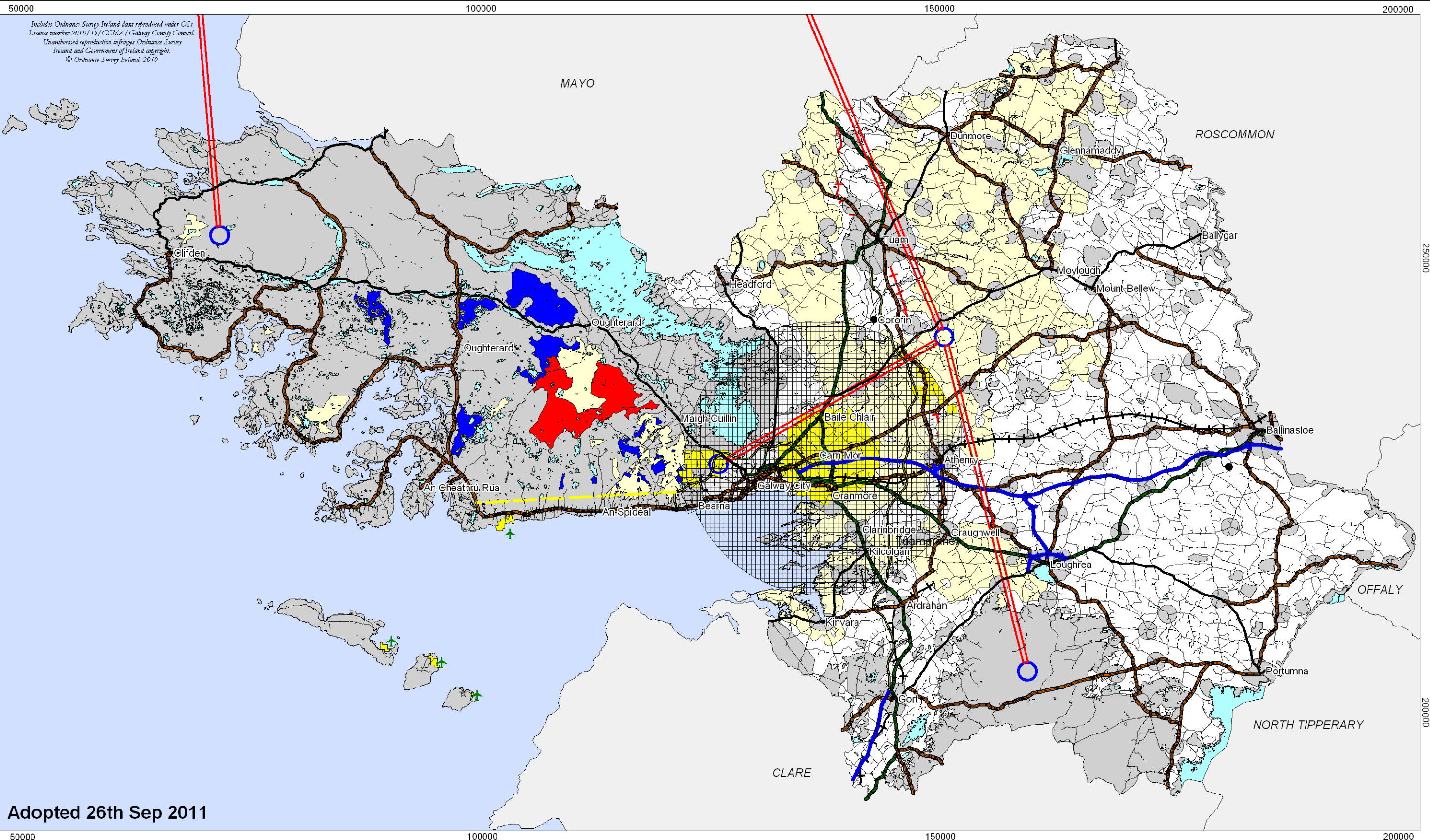
SCALE: 1:400,000 [A3]



SOURCES:  
ORDNANCE SURVEY IRELAND  
GALWAY COUNTY COUNCIL  
AN POST







**MAP WE-5F : STRATEGIC WIND FARM DEVELOPMENT AREAS AND TRANSPORT AND UTILITY INFRASTRUCTURE Galway County Council Wind Energy Strategy 2011**



- |                                     |                          |                                      |                           |
|-------------------------------------|--------------------------|--------------------------------------|---------------------------|
| SA - Strategic Areas                | National Primary Roads   | Recently Built Motorway & Link Roads | Airports / Airstrips      |
| AP - Acceptable in Principle Areas  | National Secondary Roads | Proposed Roads                       | Airport Exclusion Zone    |
| OC - Open to Consideration Areas    | Regional Roads           | Indicative Road Corridor             | Airport Safeguarding Zone |
| NP - Not Normally Permissible Areas | Local Roads              | Existing Rail                        | CAMP Masts & LOS          |
| LW - Low Wind Speed                 |                          | Proposed Rail                        |                           |

SCALE: 1:400,000 [A3]

SOURCES:  
 ORDNANCE SURVEY IRELAND  
 NATIONAL ROADS AUTHORITY  
 IRISH AVIATION AUTHORITY  
 CAMP WEST  
 GALWAY COUNTY COUNCIL