



Chamber's Photograph Album Collection

GP/9/3

**Aran Mor, Inishfree Island,
Inishinny Island, Green Island,
Carrick-Finn Island & others,
Co. Donegal**

July 1932

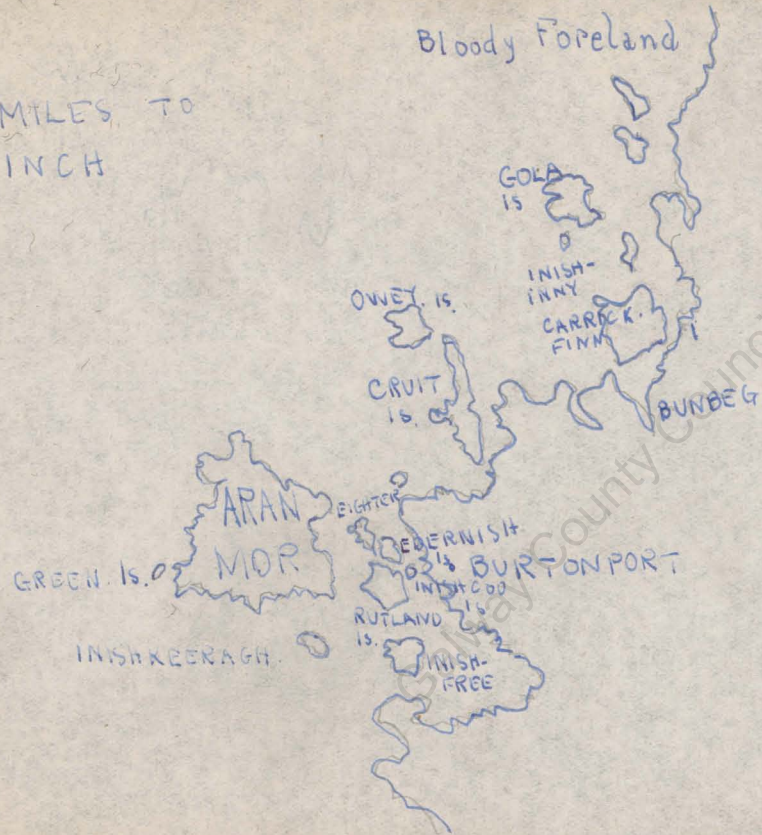
PHOTOGRAPHS

Gpa/3

Galway County Council Archives

Chamber,
64 Longhills Ave home
N.W. 11

4 MILES TO
INCH



COUNTY
DONEGAL

County Council Archives

ARAN MOR

CO DONEGAL

JULY 1932

ARAN MOR



ARAN MOR. FROM BOAT

ARAN MOR



VIEW FROM MY WINDOW

ARAN MOR



OUR BAY

ARAN MOR



THE SOUTH COAST

ARAN MOR



THE NORTH POINT

ARAN MOK



THE ATLANTIC COAST.

ARAN MOR



THE LIGHTHOUSE
(FROM BELOW)

ARAN MOR



THE LIGHTHOUSE
STEPS (FROM CLIFF)

ARAN MOR



THE LIGHTHOUSE
(FROM SEA)

ARAN MOR



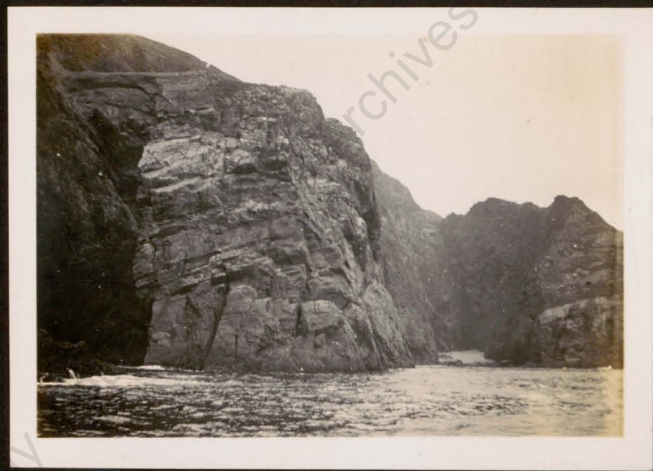
LIGHTHOUSE STEPS
(FROM SEA)

ARAN MOR



FROM LIGHTHOUSE
STEPS

ARAN MOR



THE WESTERN CLIFFS

ARAN MOR



ATLANTIC COAST

ARAN MOR



THE HIGH CLIFFS

ARAN MOR.



THE TWO PINNACLES

ARAN MOR



A GLACIAL BOULDER
(ARAN MOR)

ARAN MOR



THE SEVEN-YEAR WRECK
(THE BAY. ARAN MOR)

ARAN MOR



SLIPWAY & WRECK

ARAN MOR



THE BOTTLE OF HOLY WATER

ARAN MOR



THE LIFEBOAT

ARAN MOR



THE MAIL
(PASSING RUTLAND ISLE)



THE NEW BOAT

ARAN MOR



GETTING READY FOR SEA



WASHING SALMON NETS

ARAN MOR



THE SLAUGHTERER
AND THE ANGEL-CHILD

ARAN MOR



THE OLD PEDLAR

ARAN MOR



A RICH MAN'S HOME



A POOR MAN'S HOME

ARAN MOR



WASHING DAY
(THE GLEN)

ARAN MOR



BRIDGIT BOYLE WASHING

ARAN MOR



THE ISLAND PRIEST

ARAN MOR



A WAYSIDE WELL

ARAN MOR



GOING TO THE BOG



THE BOG
(SHOWING PEAT WORKINGS)

ARAN MOR



YOUTH
(LOADING PEAT)



AGE
(A LOAD OF PEAT)

ARAN MOR



IN THE 'MOUNTAINS'

ARAN MOR



WORK AND SPORT.

ARAN MOR



WORK IN THE BOG

ARAN MOR



TYPES
(IRISH)

ARAN MOR



GOOD FRIENDS

ARAN MOR



TURF (PEAT)

ARAN MOR



TRAVELLING TINKERS

ARAN MOR



HARVEST

ARAN MOR



CONFIRMATION
(THE SCHOOLMASTER'S CHILDREN)

ARAN MOR



SEA-WEED
(MANURE)

ARAN MOR



AN ENGLISH MEMORY
GLEN HOUSE

ARAN MOR



ANNA BOYLE & JOHN (PHILIP)
OF THE GLEN HOUSE

ARAN MOR



THE THEFT OF THE FAIRIES

G 19/3

Galway County Council Archives

ARAN MOR



SCHOOL CHILDREN

ARAN MOR



AN ISLAND TYPE

ARAN MOR



AN ISLAND CHILD
(SPANISH TYPE)

ARAN MOR



THE POSTMAN



THE OLD GRAVEYARD

INISHFREE ISLAND



GLACIAL BOULDERS
(INISHFREE)

INISHFREE ISLAND



HOUSES

INISHKEERAGH. ISLAND



THE VILLAGE

INISHKEERAGH ISLAND



BURNING SEA WEED
FOR KELP

OWEY ISLAND



A PRIMITIVE CORACLE

OWEY ISLAND



CORACLES.

OWEY ISLAND

OWEY ISLAND



OUR MOTOR BOAT
OWEY ISLAND

OWEY ISLAND



LEAVING OWEY

OWEY ISLAND



HOUSES
(OWEY)

OWEY ISLAND



ON OWEY

RUTLAND ISLAND



RUTLAND ISLAND
(BURTON PORT IN DISTANCE)

EIGHTER ISLAND



EIGHTER ISLAND
(ARAN MOR BEYOND)

GREEN ISLAND



GREEN ISLAND

INISHCOO ISLAND



INISHCOO

ARAN MOR BEYOND

EDERNISH ISLAND



OLD FISH-CURING STATION

CARRICK-FINN ISLAND



THE BOYDS CARRICK-FINN

INISHINNY ISLAND



POOR LITTLE INISHINNY!

GOLA ISLAND



GOLA AND ISLANDS BACK TO BUNBEG

GOLA ISLAND



THE CLIFFS OF GOLA

GOLA ISLAND



CORACLE

GOLA ISLAND



THE DIVER FAMILY

GOLA ISLAND



RYE GRASS FOR ASS

CRUIT ISLAND



Co DONEGAL



Old town, Letterkenny.

LETTERKENNY

Co DONEGAL



ERRIGAL AND LOUGH NACUNG, CO. DONEGAL.

CO DONEGAL



Co DONEGAL



ACHLAMORE MOUNTS (WEE ERRIGAL) CO. DONEGAL.

Co DONEGAL

Irish Farmhouse.



Co DONEGAL



BACK FROM THE PEAT BOG.

Co DONEGAL



THE POISONED GLEN DUNLEWY CO. DONEGAL.

Co DONEGAL



AN IRISH MOUNTAIN COTTAGE

12718, 1/10

Co DONEGAL



THE BARRACKS BURTONPORT
(AN ENGLISH MEMORY)

Co DONEGAL



FARM STEAD MUCROSS
 HEAD

Co DONEGAL



OLD FORT

SLEIVE LEAGUE