



Chamber's Photograph Album Collection

GP/9/4

**Achill & Clare Island, Co. Mayo,
and Greystones, Co. Wicklow.**

1937

Galway County Council Archives

PHOTOGRAPHS

ROONAH G. MAYO



MY BOAT COMES IN FROM
CLARE Is
9.15 P.M. 26.6.37

GP9/4

Galway County Council Archives

CLARE Is



FROM BOAT
THE SETTING SUN

CLARE Is



THE
MAIL
BOAT

ROONAH



THE MAIL BOAT

CLARE Is



VIEW FROM MY WINDOW
(HARBOUR AND GRACE O'MALLEY'S
CASTLE)

CLARE Is.



GRACE O'MALLEY'S
CASTLE &
THE HOTEL

CLARE Is



BATHING COVE

CLARE Is



BATHING COVE

CLARE Is



THE ATLANTIC

CLARE Is



THE ATLANTIC

CLARE Is



A ROCKBOUND COVE

CLARE Is



LOW TIDE

CLARE Is



THE LIGHTHOUSE

CLARE Is



THE LIGHTHOUSE 'VISITORS'

CLARE. Is.



VIEW FROM LIGHTHOUSE

CLARE Is

Co MAYO



ACHILL Is

CLARE Is



LOADING THE COAL TRAIN

15 TONS. 3 MILES TO LIGHTHOUSE. 2 BAGS HOLD

280 lbs ($\frac{1}{8}$ TON) 3 MILES THERE. 3 BACK

$16 \times 8 \times 3 \times 2 = 768$ MILES.

CLARE. 15.



THE COAL-TRAIN
ON WAY TO
LIGHTHOUSE

CLARE 1s



ACHILL ISLANDERS ARRIVE
FOR SPORTS

CLARE 1s



AN ACHILL PICNIC

CLARE Is



THE SAILING MATCH

CLARE 1s



WATCHING THE RACE

CLARE 1s



GOING TO THE MOUNTAIN BOG

CLARE 1s



THE MOUNTAIN BOG

CLARE Is



BRINGING HOME TURF

GPA/4

Galway County Council Archives

CLARE Is.



A 'FOREST' BOG

CLARE Is



A MEADOW

CLARE Is



GEESE

CLARE Is



THE FISHERMAN

CLARE 1s



LOBSTER & CRAYFISH POTS

CLARE Is



THE WESTERN HARBOUR

CLARE Is



LOADING LOBSTER POTS
(NOTE .I.N.R.I. ON SEAT)

CLARE 1s



REPAIRING WALL



THE MOWER

CLARE 1s



THE TWO POSTMEN

CLARE Is



FEEDING THE CALVES

CLARE Is



AN ISLAND PORTER

CLARE 1s



WHAT WAS A VILLAGE
(BEFORE THE POTATO FAMINE)

CLARE Is



A DESERTED VILLAGE
(CONNEMARA IN DISTANCE)

CLARE Is



MIDWAY

CLARE Is



AN ISLAND ROAD

CLARE Is



THE OLD WATCH TOWER



THE ISLAND POUND
(AN 'EVICTIONS' MEMORY)

CLARE 13



THE ELECTION
OFFICIALS
RETURN

CLARE Is



THE HOTEL WATER SUPPLY

CLARE Is



THE 'HOUSE' OF ST BRIDE



THE O'MALLEY ARMS



THE ABBEY

CLARE Is



A MODERN FARM

CLARE 1s



THE CABINS IN THE HILLS

CLARE Is



A MOUNTAIN FARM

CLARE Is



AN ANCIENT CABIN

CLARE 1s



A CLARE CURRACH

GREYSTONES
Co WICKLOW



A GALWAY CURRACH
(USED IN 'ISLANDMAN' FILM)

ACHILL Is



KEEL BAY & MINAUN CLIFFS

ACHILL Is



KEEL STRAND

ACHILL Is



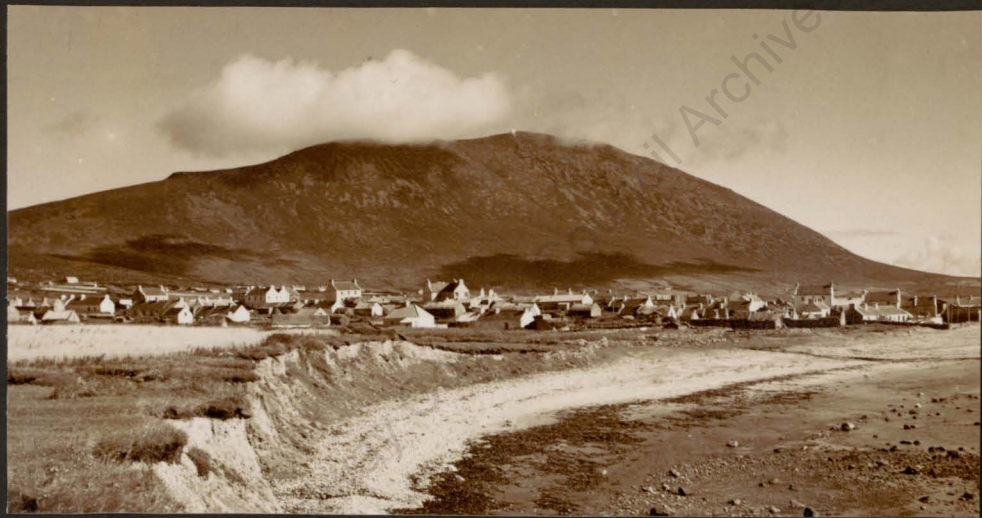
THE CATHEDRAL ROCKS

ACHILL Is



KEEL & STRAND

ACHILL Is



KEEL VILLAGE & SLIEVEMORE



KEEL VILLAGE

ACHILL Is



DOOAGH

ACHILL Is



DOOAGH VILLAGE &
ACHILL HEAD

ACHILL Is



KEEM BAY

ACHILL Is



ACHILL HEAD

ACHILL Is



DOOGORT

ACHILL 1s



AN ACHILL BOG

ACHILL Is



THE WEDDING 'GATE-CRASHER'

Co MAYO



WESTPORT

Co WICKLOW



GREYSTONES

Co WICKLOW



FROM BRAY HEAD TO
WICKLOW HEAD