

The following Orders of the Poor Law Commissioners were laid before the Board, and directions given thereon, as follows:

The following Letters from the Poor Law Commissioners and others were read by the Clerk and directions given to answer them respectively to the following effect for Orders made on them respectively as follows:

Commissioners Circular letter No 75 Dated 20 April Requesting Return of children under seven years in the Workhouse on the above date —

Commissioners letter No 8882 Dated 20 April 1861 Forwarding copies of letter relative to turf contract —

Clerk to state on minutes that there were no securities to the tender for supply of turf at 7<sup>d</sup> per ton - and that this was the ground of the Board refusing it -

Pursuant to notice of motion. Mr C Black proposed and Mr P. Eastwood Esq JP seconded - that the Medical officer of Clifden Dispensary District be

directed to visit <sup>9</sup> the Island of Roggin at least once a month —

Amendment - That having duly considered the subject of periodical visits to the Island of Roggin by the Medical officer of the Clifden Dispensary District we feel that it would be unreasonable to impose that additional duty on him - and that he could not undertake it consistent with his other Dispensary duties on the main land - on reference to the return furnished by the Clerk we find his duties are already sufficiently onerous both from the area of his District and population of same (it being 12,250) the largest of any District in the union -

We consider the difficulty might be in some degree mitigated by adding the Roggin Electoral Division to the Kenrye Dispensary District (as originally placed) which at present both in extent and population is by far the smallest in this union and which has no Islands attached to it while the other Dispensary Districts have several with large populations —

We submit this plan for the approval and consideration of the Comrs and when they will (if approved of) have the necessary steps taken to carry it into effect. in which case we recommend to the consideration of the Kenrye Dispensary District the question of what increase of salary they would recommend for their Medical officer

Signed Gatside Shea. M & Son

On a Division then appeared for the amendment Messrs. Morris. Blake. Shea. King. Muller. Rodkin. Waller Carr - 8

Against amendment Messrs. Eastwood. Black. Prior - 3

Chairman declined to vote -

Resolved That we feel how important it is that due medical relief should be afforded to the inhabitants of the Island, of Moppin and Shark and that we are convinced that such medical relief can never be efficiently given even under the most favourable circumstances except by a medical officer resident on one of those Islands in consequence of their distance from the Main Land and exposed situation which frequently renders it impossible

The cases of provisional relief, and applications for relief were considered and decided on, as set forth in the Application and Report Books.

The number of provisional admissions to the Workhouse confirmed was . . . . .

Ditto disallowed . . . . .

The number of applicants admitted to the Workhouse was . . . . .

The number of cases of provisional Out-door relief was . . . . .

Do. do. in which relief was continued by the Guardians . . . . .

The number of other applicants in the Relieving Officer's Books relieved by order of the Guardians was . . . . .

The number of applicants for whom relief was not ordered . . . . .

The Bonds and other securities in force were laid before the Guardians by the Clerk, together with his Report thereon, as follows: (this on the second Meeting after the Annual Election in every year)

to get in or out for several days -

we feel it would be impracticable to impose rates on the Islands of Moppin and Shark sufficient to meet the expense of a resident medical man -

We would therefore pray the Commissioners taking this case prominently, before the committee now sitting (and any similar cases in Ireland which on reference to the map we believe not to exceed five) and to press upon them the necessity of making some provision by the State whereby such localities would be helped in aid of the local rates by a government grant to enable to procure the necessary ~~frank~~ medical attendance -

Signed

Edgar H. Blake  
Gartside Shea

### Notice of motion

We give notice that this day fortnight we will move that the Clifden Doo and Rensgle Dispensary Districts be divided and that the following Resolution be adopted -

Resolved That Sillerna and Cleggan be added to Moppin and that the three be made a Dispensary District and a doctor appointed for the care of said Island of Moppin. Sillerna and Cleggan it not being possible for any doctor attending any of the present Dispensaries to give the

the attendance so very necessary for  
1200 inhabitants in the Island of  
Rappin —

Signed

Thomas J. Prior

Edgar A. Blake

Ordered that the master sell some old  
barns that are in the yard and give a  
return this day week of the sale

Master R. B. Smith  
Nicholas J. B. Smith

John Young Prior

Next Meeting of the Guardians to be held on Wednesday the  
15<sup>th</sup> day of May 1861

(Signed) John Young Prior  
Clerk of the Union.

Galway County Council Archives



Galway County Council Archives



14 and 15 Vic., c. 68.  
[No. 27.]

MINUTES of PROCEEDINGS of the BOARD of GUARDIANS of the \_\_\_\_\_ UNION,  
on \_\_\_\_\_ day, the \_\_\_\_\_ day of \_\_\_\_\_ 186 \_\_\_\_—continued.

SUPPLEMENTAL SHEET:—MEDICAL CHARITIES ACT, 14 & 15 Vic., cap. 68; and  
NUISANCES REMOVAL AND DISEASES PREVENTION ACTS, 1848 & 1849.

*An Estimate of Medicines, &c., required by the Medical Officer of the \_\_\_\_\_  
Dispensary District, approved by the Committee of Management, was laid before the Board, with a  
Requisition from the Committee for the supply of the same, and Directions were given thereon  
as follows:*

*An Invoice of Medicines forwarded by the Contractor, for the \_\_\_\_\_  
Dispensary District, in pursuance of an Order of the Board in their Minutes of \_\_\_\_\_  
having been received from him, the Clerk laid the Invoice before the Board, and (was directed to  
forward the same, or reported that he had forwarded the same, as the case may be,) to the Medical  
Officer of the District, retaining a Copy of the Invoice for the use of the Guardians.*

*On application of the Committee of Management of the \_\_\_\_\_  
Dispensary District, the following supplies of Books, Stationery, Forms, or other requisites were  
ordered to be supplied:*

The following Accounts of Expenses, (or Statement of Salaries due as the case may be,) under the Medical Charities Act, were laid before the Board, and Directions were given for Payment thereof (or such other directions as may be given:)

Dispensary District, \_\_\_\_\_  
Account of Mr. \_\_\_\_\_ for \_\_\_\_\_: Amount £

[This at the end of each half-year, in pursuance of Articles 28 and 29 of the General Rules for Dispensary Districts, dated 16th December, 1853.]

An Account of the Expenses incurred for the service of each Dispensary District in the Union, for the half-year ended \_\_\_\_\_ 186\_\_, having been submitted to the Board, the Clerk was directed to furnish to the Committee of each Dispensary District a statement of all the Expenses of the District which have been included in the half-year's accounts. The following is the total Expense incurred for each Dispensary District for the half-year ended \_\_\_\_\_ 186\_\_.

|                 |       |   |
|-----------------|-------|---|
| _____ District, | ..... | £ |
| _____ District, | ..... | £ |

Galway County

[This to be entered on the occasion of every appointment of a new Committee, after the annual Election of Guardians, and on the occasion of any election to fill any vacancies in a Dispensary Committee].

The Board elected the following Rate-payers to be Members of the Committees of Management of the following Dispensary Districts, respectively:—the Clerk to make a Return accordingly to the Poor Law Commissioners, and to issue the prescribed Notification to the Members elected, and to the Medical Officers of the respective Dispensary Districts, in pursuance of Articles 1, 2, and 3 of the General Regulations for Dispensary Districts.—The Clerk was also directed to supply Check Books of Medical Relief Tickets, (Forms E 1 and E 2,) in pursuance of Article 27 of the Dispensary Regulations, to the new Members of the Committees; namely:—

\_\_\_\_\_ Dispensary District, Mr. \_\_\_\_\_ of \_\_\_\_\_

The following Orders of the Poor Law Commissioners under the Medical Charities Act, were laid before the Board and directions given thereon as follows:

Order dated \_\_\_\_\_ (state subject.)

The following Letters on matters arising under the Medical Charities Act or the Nuisances Removal and Diseases Prevention Acts, from the Poor Law Commissioners and others, were read by the Clerk, and directions given to answer them respectively, to the following effect / or Orders were made on them respectively as follows :

Read Letter from \_\_\_\_\_ dated \_\_\_\_\_ stating that \_\_\_\_\_

Population in 1851—

STATE of the WORKHOUSE for the Week ending Saturday, the 27 day of April 1861

Table with columns for accommodation types (Workhouse, Temporary Buildings, etc.), age groups (Able-bodied, Aged and Infirm, Boys and Girls, etc.), and RETURN OF SICK AND LUNATICS (Number in Hospital, No. of Lunatics, etc.).

RETURN of DESTITUTE PERSONS relieved out of the Workhouse, as by Relief Lists, for the last Week ended Saturday, the \_\_\_\_\_ day of \_\_\_\_\_ authenticated and laid before the Board of Guardians at this Meeting.

Table with columns for RELIEF DISTRICT, Destitute Persons relieved out of the Workhouse (under 10 Vict. c. 31, s. 1. and not comprised in Sec. 1.), Total relieved out of the Workhouse, and RELIEF DISTRICT details (Number of cases, etc.).

COPY of MINUTES of Proceedings of the Board of Guardians, at a Meeting held on Wednesday the 1st day of May 1861

PRESENT: In the Chair,

Other Guardians:

Thomas Prior Esq JP

Justice Shea Esq,
Nichols Maddin,
A J. Morris,
W S. Wall,
O O'Neill

The Minutes of last Meeting were read and Signed.

Galway County



Notices of Marriage between the parties hereunder named having been received from the District Registrar by the Clerk, were duly read at the Board this day in accordance with the 15th section of the 7 & 8 Vic., c. 81.

The Workhouse Register was produced, examined, and authenticated, from No. 2032 to No. 2034, both inclusive, by the signature of the Chairman, and countersignature of the Clerk.

The Out-door Relief Register was produced, examined, and authenticated from No. \_\_\_\_\_, inclusive, by the signature of the Chairman and countersignature of the Clerk.

The Clerk's Report on the execution of Orders previously made by the Board was read, to the following effect:

The Ledger was produced by the Clerk, posted up to the last day of Meeting, with the proper Debits and Credits, as ordered on that day.

The Treasurer's Book of Receipts and Payments was produced, by which it appeared that there had been received during the week - - - - £ 52 - 3 - 7½

Paid during the week, - - - - £ 0 0 0

And that the Balance on the Account f avr of the Guardians was - £ 293 - 18 - 11

The Book was signed by the Chairman.

The Weekly balance-sheets of the several Collectors were laid before the Board, their accuracy having been first ascertained and authenticated by the Clerk.

The Lodgments made of Rates collected in the several Electoral Divisions appear to have been as follows:—

| Name of each Collector. | Electoral Divisions arranged in Collectors' Districts. | Collected and Lodged. |    |      | Total. |    |    | Remaining. |    |    | Total. |    |     |
|-------------------------|--|-----------------------|----|------|--------|----|----|------------|----|----|--------|----|-----|
|                         |  | £                     | s. | d.   | £      | s. | d. | £          | s. | d. | £      | s. | d.  |
| Francis Stullen         | Dunowen  | -                     | 11 | 10½  |        |    |    | 39         | 8  | 5½ |        |    |     |
|                         | Clifden  | 2                     | 0  | 15 0 |        |    |    | 103        | 17 | 5½ |        |    |     |
|                         | Reurycanla   | "                     | "  | "    |        |    |    | 14         | 8  | 9  |        |    |     |
|                         | Reurylee   | "                     | "  | "    |        |    |    | 5          | 17 | 1½ |        |    |     |
|                         | Davonlonghann  | 6                     | 16 | 3    |        |    |    | 8          | 1  | 10 |        |    |     |
|                         | Enistarraun  | "                     | "  | "    |        |    |    | 1          | 17 | 5  |        |    |     |
|                         | Sillerna   | 4                     | 10 | 7½   |        |    |    | 7          | 26 | 5½ |        |    |     |
|                         |  |                       |    |      | 32     | 13 | 9  |            |    |    | 180    | 15 | 4   |
| Joseph W. Donnell       | Ballinakil   | 3                     | 4  | 5½   |        |    |    | 74         | 15 | 1½ |        |    |     |
|                         | Cluygan  | 3                     | 2  | 4    |        |    |    | 1          | 18 | 1½ |        |    |     |
|                         | Cash Killen  | -                     | -  | -    |        |    |    | 4          | 14 | 8½ |        |    |     |
|                         | Mishboppin   | -                     | 7  | 2½   |        |    |    | "          | "  | "  |        |    |     |
|                         | Reurylee   | 12                    | 15 | 10½  |        |    |    | 24         | 2  | 4½ |        |    |     |
|                         |  |                       |    |      |        | 19 | 9  | 10½        |    |    |        | 35 | 12  |
| Patrick Pye             | Reurcon  | "                     | "  | "    |        |    |    | 4          | 2  | 3  |        |    |     |
|                         | Ellion   | "                     | "  | "    |        |    |    | 3          | 8  | 0  |        |    |     |
|                         | Knockboy   | "                     | "  | "    |        |    |    | 57         | 10 | 1½ |        |    |     |
|                         | Koyms  | "                     | "  | "    |        |    |    | 12         | 8  |    |        |    |     |
|                         | Owengnola  | "                     | "  | "    |        |    |    | 20         | 15 | 7  |        |    |     |
|                         | Roundstone   | "                     | "  | "    |        |    |    | 40         | 2  | 1½ |        |    |     |
| Skerrive                | "  | "                     | "  |      |        |    | 7  | 8          | 8½ |    | 127    | 19 | 10½ |
|                         |  |                       |    |      |        |    |    |            |    |    | 52     | 3  | 7½  |
|                         |  |                       |    |      |        |    |    |            |    |    | 344    | 7  | 2½  |

Note.—A total is to be inserted in Red Ink at the foot of each Collector's District, as well as for the entire Union.

Debit the Treasurer and Credit the several Electoral Divisions with the respective amounts lodged.

The Clerk's Account of petty Disbursements made by him since last Meeting, amounting to £1-11-3 was produced and passed.

The following Books were exhibited by the Clerk, he having first ascertained the accuracy of the entries made therein by the Master of the Workhouse, and authenticated the same by his signature:

1. The Weekly Relief List and Abstract.
2. The Provision Check Accounts.
3. The Provision Receipt and Consumption Account.

By which it appeared that the Cost of Provisions and Necessaries received during the week was £15-14s. 2d.

|  |   | £ | s. | d. |
|--|---|---|----|----|
| Debit Provision Account, and Credit Invoice Account.       |   |   |    |    |
| The Cost of Provisions and Necessaries consumed was        | - |   | 19 | 0  |
| Debit Maintenance Account, and Credit Provision Account.   |   |   |    |    |
| And the general average Cost of an Inmate for the week was | - |   | 2  | 6  |
| Average cost in Infirmary,                                 | - |   | 4  | 1  |
| Average cost in Fever Hospital,                            | - |   |    |    |

The Master's estimate of Provisions and Necessaries required for the ensuing week was examined, and Orders were duly made for the several articles specified, namely:

|                |                        |
|----------------|------------------------|
| 740 lb Mead    | 1 dozen wine           |
| 76 " meat      | 8 small bottles Porter |
| 2 ewt meal     | 35 boxes turf          |
| 2 " meal       | 56 lb soap             |
| 640 qt Milk    | 1 " oil                |
| 2 lbs Tea      |                        |
| 20 " Sugar     |                        |
| 1 " Soap Sugar |                        |
| 8 Sheepheads   |                        |

The following Books were also produced by the Clerk, their accuracy having been previously ascertained by him, and authenticated by his Signature:

1. The several Clothing Accounts.
2. The Medical Officers' Books.

The Out-door Relief Lists and Weekly Receipt and Expenditure Books of the several Relieving Officers were then produced by the Clerk, their accuracy having been previously ascertained by him, and authenticated by his signature.

The Abstract of the Out-door Relief Lists was also produced by the Clerk having been duly entered up by him for the last week ended Saturday, the day of 1866, whereby it appeared that in that week the Total Expenditure in Out-door Relief was

|           | £ | s. | d. |
|-----------|---|----|----|
| In money, | - | -  | -  |
| In kind,  | - | -  | -  |
| Total,    | - | -  | -  |

Credit each Relieving Officer, as per Receipt and Expenditure Book.

The requirements of each Relieving Officer for the ensuing week having been duly considered and estimated by the Board, checks on the Treasurer and orders on Contractors were duly signed and delivered to each of them, of the following amounts and value, respectively:

| RELIEF DISTRICT. | Name of Relieving Officer. | By Check on Treasurer.<br>£ s. d. | By Order on Contractors. |                   | RELIEF DISTRICT. | Name of Relieving Officer. | By Check on Treasurer.<br>£ s. d. | By Order on Contractors. |                   |
|------------------|----------------------------|-----------------------------------|--------------------------|-------------------|------------------|----------------------------|-----------------------------------|--------------------------|-------------------|
|                  |                            |                                   | Article and quantity.    | Value.<br>£ s. d. |                  |                            |                                   | Article and quantity.    | Value.<br>£ s. d. |
| No. I.           |                            |                                   |                          |                   | Bt. forward      |                            |                                   |                          |                   |
| No. II.          |                            |                                   |                          |                   | No. X.           |                            |                                   |                          |                   |
| No. III.         |                            |                                   |                          |                   | No. XI.          |                            |                                   |                          |                   |
| No. IV.          |                            |                                   |                          |                   | No. XII.         |                            |                                   |                          |                   |
| No. V.           |                            |                                   |                          |                   | No. XIII.        |                            |                                   |                          |                   |
| No. VI.          |                            |                                   |                          |                   | No. XIV.         |                            |                                   |                          |                   |
| No. VII.         |                            |                                   |                          |                   | No. XV.          |                            |                                   |                          |                   |
| No. VIII.        |                            |                                   |                          |                   | No. XVI.         |                            |                                   |                          |                   |
| No. IX.          |                            |                                   |                          |                   | No. XVII.        |                            |                                   |                          |                   |
| Car. forwd.      |                            |                                   |                          |                   | TOTAL,           |                            |                                   |                          |                   |

Credit Treasurer with Checks.

Debit each Relieving Officer with Checks and Orders.

On the Report and recommendation of the Finance Committee the following Bills having been duly examined, and found to be correct, and in accordance with the several Orders, were directed to be paid, and Checks for the several amounts were duly drawn on the Treasurer and Signed, namely:

|    |                           | £ | s. | d. |
|----|---------------------------|---|----|----|
| 13 | Thomas Lydon for clothing | 4 | 9  | 8  |
| 21 | Patrick Joyce Straw       | 1 | 8  | 0  |
| 25 | Andrew Conolly clothing   | - | 11 | 7  |

Debit Clothing Account and Credit Treasurer with the several sums as above.

2. Establishment Account.

|    |                                      |    |    |    |
|----|--------------------------------------|----|----|----|
| 14 | Thomas Craker - stationery &         | 1  | 2  | 0  |
| 15 | Edward Sattelle hardware             | 1  | 18 | 11 |
| 22 | Henry Finerson Repair                | -  | 15 | 0  |
| 23 | Dom <sup>o</sup> Welch plants        |    | 13 | 2  |
| 24 | Patrick Joyce hardware &             | 2  | 2  | 8  |
| 26 | Andrew Conolly furniture             | 1  | 7  | 0  |
| 27 | James Darcy Rent of N. House         | 7  | 0  | 0  |
| 28 | Geo J Robinson Rent of Roundstone Bk | 7  | 0  | 0  |
| 29 | Wm Concanon. Services & schoolmaster | 6  | 0  | 0  |
| 30 | John Burke small expenses            | 10 | 0  | 0  |
| 31 | John Burke small acct                | 1  | 11 | 3  |
| 32 | John Mullen master                   | 2  | 0  | 0  |
| 33 | Allen Winder Smith work              | -  | 9  | 4  |

Debit Establishment Account and Credit Treasurer with the several sums as above.



The Clerk's Account of petty Disbursements made by him since last Meeting, amounting to £1-11-3 was produced and passed.

The following Books were exhibited by the Clerk, he having first ascertained the accuracy of the entries made therein by the Master of the Workhouse, and authenticated the same by his signature:

1. The Weekly Relief List and Abstract.
2. The Provision Check Accounts.
3. The Provision Receipt and Consumption Account.

By which it appeared that the Cost of Provisions and Necessaries received during the week was £15-14s. 2d.

Debit Provision Account, and Credit Invoice Account. £ s. d.

The Cost of Provisions and Necessaries consumed was - - 19: 0: 11

Debit Maintenance Account, and Credit Provision Account.

And the general average Cost of an Inmate for the week was - : 2: 6

Average cost in Infirmary, - - - - : 4: 1

Average cost in Fever Hospital, - - - - : -

The Master's estimate of Provisions and Necessaries required for the ensuing week was examined, and Orders were duly made for the several articles specified, namely:

|                |                        |
|----------------|------------------------|
| 740 lb Mead    | 1 dozen wine           |
| 76 " meat      | 8 small bottles Porter |
| 2 ewt meal     | 35 boxes turf          |
| 2 " meal       | 56 lb soap             |
| 60 qt. Milk    | " "                    |
| 2 lbs Tea      | " "                    |
| 20 " Sugar     | " "                    |
| 1 " Soap Sugar | " "                    |
| 8 Sheepheads   | " "                    |

The following Books were also produced by the Clerk, their accuracy having been previously ascertained by him, and authenticated by his Signature:

1. The several Clothing Accounts.
2. The Medical Officers' Books.

The Out-door Relief Lists and Weekly Receipt and Expenditure Books of the several Relieving Officers were then produced by the Clerk, their accuracy having been previously ascertained by him, and authenticated by his signature.

The Abstract of the Out-door Relief Lists was also produced by the Clerk having been duly entered up by him for the last week ended Saturday, the day of 186, whereby it appeared that in that week the Total Expenditure in Out-door Relief was

|           |   |    |    |
|-----------|---|----|----|
| In money, | £ | s. | d. |
| In kind,  | - | -  | -  |
| Total,    | - | -  | -  |

Credit each Relieving Officer, as per Receipt and Expenditure Book.

The requirements of each Relieving Officer for the ensuing week having been duly considered and estimated by the Board, checks on the Treasurer and orders on Contractors were duly signed and delivered to each of them, of the following amounts and value, respectively:

| RELIEF DISTRICT. | Name of Relieving Officer. | By Check on Treasurer.<br>£ s. d. | By Order on Contractors. |                   | RELIEF DISTRICT. | Name of Relieving Officer. | By Check on Treasurer.<br>£ s. d. | By Order on Contractors. |                   |
|------------------|----------------------------|-----------------------------------|--------------------------|-------------------|------------------|----------------------------|-----------------------------------|--------------------------|-------------------|
|                  |                            |                                   | Article and quantity.    | Value.<br>£ s. d. |                  |                            |                                   | Article and quantity.    | Value.<br>£ s. d. |
| No. I.           |                            |                                   |                          |                   | Bt. forward      |                            |                                   |                          |                   |
| No. II.          |                            |                                   |                          |                   | No. X.           |                            |                                   |                          |                   |
| No. III.         |                            |                                   |                          |                   | No. XI.          |                            |                                   |                          |                   |
| No. IV.          |                            |                                   |                          |                   | No. XII.         |                            |                                   |                          |                   |
| No. V.           |                            |                                   |                          |                   | No. XIII.        |                            |                                   |                          |                   |
| No. VI.          |                            |                                   |                          |                   | No. XIV.         |                            |                                   |                          |                   |
| No. VII.         |                            |                                   |                          |                   | No. XV.          |                            |                                   |                          |                   |
| No. VIII.        |                            |                                   |                          |                   | No. XVI.         |                            |                                   |                          |                   |
| No. IX.          |                            |                                   |                          |                   | No. XVII.        |                            |                                   |                          |                   |
| Car. forwd.      |                            |                                   |                          |                   | TOTAL,           |                            |                                   |                          |                   |

Credit Treasurer with Checks.

Debit each Relieving Officer with Checks and Orders.

On the Report and recommendation of the Finance Committee the following Bills having been duly examined, and found to be correct, and in accordance with the several Orders, were directed to be paid, and Checks for the several amounts were duly drawn on the Treasurer and Signed, namely:

|  |  |    |         |       |    |          |   |    |    |
|--|--|----|---------|-------|----|----------|---|----|----|
|  |  | 13 | Thomas  | Edon  | or | clothing | £ | s. | d. |
|  |  | 21 | Patrick | Wye   |    | straw    | 1 | 8  | 0  |
|  |  | 25 | andrew  | Wally |    | clothing | - | 11 | 7  |

Debit Clothing Account and Credit Treasurer with the several sums as above.

2. Establishment Account.

|    |         |           |                    |    |    |    |
|----|---------|-----------|--------------------|----|----|----|
| 14 | Thomas  | Craker    | stationery         | 1  | 2  | 0  |
| 15 | Edward  | Sutcliffe | hardware           | 1  | 18 | 11 |
| 22 | Henry   | Finerson  | Repairs            | -  | 15 | 0  |
| 23 | John    | Welch     | plants             |    | 13 | 2  |
| 24 | Patrick | Wye       | hardware           | 2  | 2  | 8  |
| 26 | andrew  | Wally     | furniture          | 1  | 7  | 0  |
| 27 | James   | Darcy     | Rent of N. House   | 7  | 0  | 0  |
| 28 | Genl    | Robinson  | Rent of Roundstone | 7  | 0  | 0  |
| 29 | Wm      | Concanon  | Services at school | 6  | 0  | 0  |
| 30 | John    | Wheeler   | small apes         | 10 | 0  | 0  |
| 31 | John    | Wheeler   | small apes         | 1  | 11 | 3  |
| 32 | John    | Wheeler   | Master             | 2  | 0  | 0  |
| 33 | John    | Wheeler   | Smith work         | -  | 9  | 4  |

Debit Establishment Account and Credit Treasurer with the several sums as above.



3. Workhouse Invoice Account.

|    |        |          |                     | £  | s. | d. |
|----|--------|----------|---------------------|----|----|----|
| 9  | James  | Sharpley | Groceries to 25 Mar | 14 | 14 | 8  |
| 10 | James  | Mittler  | Bread do            | 14 | 16 | 6  |
| 11 | John   | Boyer    | Meat do             | 7  | 6  | 6  |
| 12 | Thomas | Sydon Jr | Soap & do           | 4  | 2  | 9  |
| 16 | Wm 2   | Adamsen  | Wills to 1st May    | 33 | 10 | 9  |
| 17 | Wm     | King     | Wool & Mead         | 11 | 1  | 6  |
| 18 | Mike   | Miller   | Meat                | 5  | 5  | 0  |
| 19 | James  | Mittler  | Meat                | 15 | 4  | 7  |
| 20 | Thomas | Sydon Jr | Soap &c             | 2  | 6  | 14 |

Debit Workhouse Invoice Account and Credit Treasurer with the several sums as above.

4. Out-door Relief Invoice Account.

| £ | s. | d. |
|---|----|----|
|   |    |    |

Credit Treasurer and Debit Out-door Relief Invoice Account with the several sums as above.

The Clerk's Report of Vaccination was read—(this on the first meeting in every month)—  
Number of successful cases.

The Report of the Visiting Committee was read, and Orders were made thereon as follows:

The Reports of the Master and other Officers were read and Orders made thereon as follows.

The following Orders of the Poor Law Commissioners were laid before the Board, and directions given thereon, as follows:

The following Letters from the Poor Law Commissioners and others were read by the Clerk and directions given in answer to them respectively to the following effect, for Orders made on them respectively as follows:

P.L. Commissioners Letter No 9295. Dated 23 April 1861

Requesting the Guardians to consider whether proceedings should not be taken against the collectors and their sureties -

Ordered that the Collectors be instructed to appear before the Board on this day week with their accounts finally closed. otherwise their sureties will be sued without further notice unless they can show good cause for the non-collection -

P.L. Commissioners Letter No 9830. Dated 30 April 1861  
Sanctioning payment of six pounds to  
Marion of Workhouse for services as  
Schoolmistress -

Ordered that the Master having applied for £2 - he get

Ordered that Mary Bridget Ryder be discharged from the House. when she is fit to be so discharged

Ordered that notices be posted that we will on this day fortnight receive tenders for the supply of sheep heads, beaver heads, and wool - for six months

Ordered that the Registrar General be requested to consider the amount of labour placed upon the master under the Census Act. with the view of remunerating him for same -

J. W. Robinson Chairman

J. J. Osborn  
Secretary

The cases of provisional relief, and applications for relief were considered and decided on, as set forth in the Application and Report Books.

The number of provisional admissions to the Workhouse confirmed was -

Ditto disallowed - - - - -

The number of applicants admitted to the Workhouse was -

The number of cases of provisional Out-door relief was - - -

Do. do. in which relief was continued by the Guardians - - -

The number of other applicants in the Relieving Officer's Books relieved by order of the Guardians was - - - - -

The number of applicants for whom relief was not granted

The Donor and other securities in force were laid before the Guardians by the Clerk, together with his Report thereon, as follows: (this on the second Meeting after the Annual Election in every year.)

Galway County Council Archives



Next Meeting of the Guardians to be held on *Wednesday* the  
*8<sup>th</sup>* day of *May* 1861

(Signed) *John Dwyer*  
Clerk of the Union.

Galway County Council Archives

Galway County Council Archives

14 and 15 Vic., c. 68.)  
[No. 27.]

MINUTES of PROCEEDINGS of the BOARD of GUARDIANS of the \_\_\_\_\_ UNION,  
on \_\_\_\_\_ day, the \_\_\_\_\_ day of \_\_\_\_\_ 186 .—continued.

SUPPLEMENTAL SHEET:—MEDICAL CHARITIES ACT, 14 & 15 Vic., cap. 68; and  
NUISANCES REMOVAL AND DISEASES PREVENTION ACTS, 1848 & 1849.

*An Estimate of Medicines, &c., required by the Medical Officer of the \_\_\_\_\_  
Dispensary District, approved by the Committee of Management, was laid before the Board, with a  
Requisition from the Committee for the supply of the same, and Directions were given thereon  
as follows:*

*An Invoice of Medicines forwarded by the Contractor, for the \_\_\_\_\_  
Dispensary District, in pursuance of an Order of the Board in their Minutes of \_\_\_\_\_  
having been received from him, the Clerk laid the Invoice before the Board, and (was directed to  
forward the same, or reported that he had forwarded the same, as the case may be,) to the Medical  
Officer of the District, retaining a Copy of the Invoice for the use of the Guardians.*

*On application of the Committee of Management of the \_\_\_\_\_  
Dispensary District, the following supplies of Books, Stationery, Forms, or other requisites were  
ordered to be supplied:*



The following Accounts of Expenses, (or Statement of Salaries due as the case may be,) under the Medical Charities Act, were laid before the Board, and Directions were given for Payment thereof (or such other directions as may be given:)

Dispensary District, \_\_\_\_\_  
Account of Mr. \_\_\_\_\_ for \_\_\_\_\_: Amount £ \_\_\_\_\_

[This at the end of each half-year, in pursuance of Articles 28 and 29 of the General Rules for Dispensary Districts, dated 16th December, 1853.]

An Account of the Expenses incurred for the service of each Dispensary District in the Union, for the half-year ended \_\_\_\_\_ 186\_\_\_\_, having been submitted to the Board, the Clerk was directed to furnish to the Committee of each Dispensary District a statement of all the Expenses of the District which have been included in the half-year's accounts. The following is the total Expense incurred for each Dispensary District for the half-year ended \_\_\_\_\_ 186\_\_\_\_.

|                           |   |
|---------------------------|---|
| _____ District, . . . . . | £ |
| _____ District, . . . . . | £ |

Galway County

[This to be entered on the occasion of every appointment of a new Committee, after the annual Election of Guardians, and on the occasion of any election to fill any vacancies in a Dispensary Committee].

The Board elected the following Rate-payers to be Members of the Committees of Management of the following Dispensary Districts, respectively:—the Clerk to make a Postern accordingly to the Poor Law Commissioners, and to issue the prescribed Notification to the Members elected, and to the Medical Officers of the respective Dispensary Districts, in pursuance of Articles 1, 2, and 3 of the General Regulations for Dispensary Districts.—The Clerk was also directed to supply Check Books of Medical Relief Tickets, (Forms E 1 and E 2,) in pursuance of Article 27 of the Dispensary Regulations, to the new Members of the Committees; namely:—

\_\_\_\_\_ Dispensary District, Mr. \_\_\_\_\_ of \_\_\_\_\_

The following Orders of the Poor Law Commissioners under the Medical Charities Act, were laid before the Board and directions given thereon as follows:

Order dated \_\_\_\_\_ (state subject.)

The following Letters on matters arising under the Medical Charities Act or the Nuisances Removal and Diseases Prevention Acts, from the Poor Law Commissioners and others, were read by the Clerk, and directions given to answer them respectively, to the following effect (or Orders were made on them respectively as follows:—)

Read Letter from \_\_\_\_\_ dated \_\_\_\_\_ stating that \_\_\_\_\_

Population in 1851—

Present Net Annual Value, ...£

STATE of the WORKHOUSE for the Week ending Saturday, the 4<sup>th</sup> day of May 1861

Table with columns: Number of inmates for which accommodation is provided, No. that can be accommodated in each building, Total no. in each building on the above date, Able-bodied (Males, Fem.), Aged and infirm persons, and adult persons, above 15 years of age, but not working (Males, Fem.), Boys and Girls above 9 and under 15 years of age (Boys, Girls), Children above 5 and under 9 years of age, Children above 2 and under 5 years of age, Infants under 2 years of age, RETURN OF SICK AND LUNATICS (Number in Hospital on the above date, No. of Lunatics and Idiots in Workhouse on the above date), OBSERVATIONS.

RETURN of DESTITUTE PERSONS relieved out of the Workhouse, as by Relief Lists, for the last Week ended Saturday, the \_\_\_\_\_ day of \_\_\_\_\_ authenticated and laid before the Board of Guardians at this Meeting.

Table with columns: RELIEF DISTRICT, Destitute Persons relieved out of the Workhouse under 10 Vict. c. 31, s. 1. (Number of cases relieved, Number of Persons, including Applicant and Family, dependent on him or her), Destitute Persons relieved out of the Workhouse, but not comprised in Sec. 1. (Number of cases relieved, Number of Persons, including Applicant and Family, dependent on him or her), Total relieved out of the Workhouse (Cases, Persons), RELIEF DISTRICT, Destitute Persons relieved out of the Workhouse under 10 Vict. c. 31, s. 1. (Number of cas. s. relieved, Number of Persons, including Applicant and Family, dependent on him or her), Destitute Persons relieved out of the Workhouse, but not comprised in Sec. 1. (Number of cases relieved, Number of Persons, including Applicant and Family, dependent on him or her), Total relieved out of the Workhouse (Cases, Persons).

COPY of MINUTES of Proceedings of the Board of Guardians, at a Meeting held on Wednesday

the 8<sup>th</sup> day of May 1861

PRESENT: In the Chair,

Geo. J. Robertson Esq JP Chairman

Other Guardians:

- Thomas y Prior Esq JP, Thomas J Zuckwood, Edgus H Blake, Mhu C Jones, Patrick McCaulan, Mhu Robertson Esq, W. Campbell Esq, Coleman Thompson, M. R. Hart Esq, Mhu Gerety, Gastaidhean, A J Morris, W. S. Wall, Pat O'Sullivan, Mhu Kelly, Pat King

The Minutes of last Meeting were read and Signed.

(Signed)

Clerk of the Union



Notices of Marriage between the parties hereunder named having been received from the District Registrar by the Clerk, were duly read at the Board this day in accordance with the 15th section of the 7 & 8 Vic., c. 81.

The Workhouse Register was produced, examined, and authenticated, from No. 3037 to No. 3041, both inclusive, by the signature of the Chairman, and countersignature of the Clerk.

The Out-door Relief Register was produced, examined, and authenticated from No. \_\_\_\_\_ to No. \_\_\_\_\_, inclusive, by the signature of the Chairman and countersignature of the Clerk.

The Clerk's Report on the execution of Orders previously made by the Board was read, to the following effect:

The Ledger was produced by the Clerk, posted up to the last day of Meeting, with the proper Debits and Credits, as ordered on that day.

The Treasurer's Book of Receipts and Payments was produced, by which it appeared that there had been received during the week - - - - - £ 216-13-3

Paid during the week - - - - - £ 149-17-2

And that the Balance on the Account for the Guardians was - £ 360-15-0

The Book was signed by the Chairman.

The Weekly balance-sheets of the several Collectors were laid before the Board, their accuracy having been first ascertained and authenticated by the Clerk.

The Lodgments made of Rates collected in the several Electoral Divisions appear to have been as follows:—

| Name of each Collector. | Electoral Divisions arranged in Collectors' Districts. | Collected and Lodged. |    |     | Total. |    |     | Remaining. |    |    | Total. |    |    |
|-------------------------|--|-----------------------|----|-----|--------|----|-----|------------|----|----|--------|----|----|
|                         |  | £                     | s. | d.  | £      | s. | d.  | £          | s. | d. | £      | s. | d. |
| Francis Mullen          | Ann Owen   | 23                    | 10 | 9½  |        |    |     | 15         | 17 | 8  |        |    |    |
|                         | Clifden  | 58                    | 16 | 10½ |        |    |     | 45         | "  | 7  |        |    |    |
|                         | Derryvally   | 14                    | 8  | 9   |        |    |     | "          | "  | "  |        |    |    |
|                         | Derryglan  | 3                     | 0  | 4   |        |    |     | 2          | 17 | 7½ |        |    |    |
|                         | Darlington   | 3                     | 5  | 0   |        |    |     | 4          | 16 | 10 |        |    |    |
|                         | Ennisman   | "                     | "  | "   |        |    |     | 1          | 17 | 5  |        |    |    |
|                         | Sillenna   | "                     | "  | "   |        |    |     | 7          | 3  | 5½ |        |    |    |
|                         |  |                       |    |     | 103    | 19 |     |            |    |    | 77     | 13 | 7  |
| Joseph McDonnell        | Dallinacilly   | 2                     | 0  | 7½  |        |    |     | 2          | 15 | 4  |        |    |    |
|                         | Cleggan  | 1                     | 0  | 11  |        |    |     | "          | 18 | ½  |        |    |    |
|                         | Cush Killary   | 1                     | 19 | 1   |        |    |     | 2          | 15 | 7½ |        |    |    |
|                         | Mishkeppin   | "                     | "  | "   |        |    |     |            |    |    |        |    |    |
|                         | Renvyle  | "                     | "  | "   |        |    |     | 24         | 2  | 4½ |        |    |    |
|                         |  |                       |    |     | 5      | 0  | 7½  |            |    |    | 30     | 11 | 4½ |
| Patrick Rye             | Gencon   |                       |    |     |        |    |     | 4          | 2  | 3  |        |    |    |
|                         | Ellion   |                       |    |     |        |    |     | 3          | 8  | 0  |        |    |    |
|                         | Knockbeg   | 47                    | 13 | 11  |        |    |     | 3          | 16 | 7½ |        |    |    |
|                         | Knorrus  |                       |    |     |        |    |     | -          | 12 | 8  |        |    |    |
|                         | Queen's Walk   | 19                    | 4  | 2   |        |    |     | 1          | 11 | 5  |        |    |    |
|                         | Roundstone   | 35                    | 14 | 9½  |        |    |     | 4          | 7  | 4  |        |    |    |
| Skarnive                | 5  | 18                    | 0  |     |        |    | 1   | 10         | 8½ |    |        |    |    |
|                         |  |                       |    |     | 108    | 10 | 10½ |            |    |    | 19     | 9  | 0  |
|                         |  |                       |    |     |        |    |     |            |    |    | 217    | 13 | 3  |
|                         |  |                       |    |     |        |    |     |            |    |    | 127    | 13 | 1½ |

Note—A total is to be inserted in Red Ink at the foot of each Collector's District, as well as for the entire Union.

Debit the Treasurer and Credit the several Electoral Divisions with the respective amounts lodged.



The Clerk's Account of petty Disbursements made by him since last Meeting, amounting to £ \_\_\_\_\_ was produced and passed.

The following Books were exhibited by the Clerk, he having first ascertained the accuracy of the entries made therein by the Master of the Workhouse, and authenticated the same by his signature:

1. The Weekly Relief List and Abstract.
2. The Provision Check Accounts.
3. The Provision Receipt and Consumption Account.

By which it appeared that the Cost of Provisions and Necessaries received during the week was £ 20 - 4 s. 2 d.

Debit Provision Account, and Credit Invoice Account.

The Cost of Provisions and Necessaries consumed was - - - 18 : 3 : 9

Debit Maintenance Account, and Credit Provision Account.

And the general average Cost of an Inmate for the week was - - - : 2 : 5

Average cost in Infirmary, - - - - - : 3 : 11

Average cost in Fever Hospital, - - - - - : : :

The Master's estimate of Provisions and Necessaries required for the ensuing week was examined, and Orders were duly made for the several articles specified, namely:

|                   |                  |
|-------------------|------------------|
| 740 lb Omeal      | 20 lb Sugar      |
| 35 boxes Turf     | 1 1/2 " Soapflax |
| 82 lb meat        | 56 " Rice        |
| 8 Hens            | 14 " arrowroot   |
| 2 Cwt Omeal       | 7 " starch       |
| 2 " L meal        | 4 " Candles      |
| 1 gallon Whiskey  |                  |
| 14 bottles Porter |                  |
| 2 lbs Tea         |                  |

The following Books were also produced by the Clerk, their accuracy having been previously ascertained by him, and authenticated by his Signature:

1. The several Clothing Accounts.
2. The Medical Officers' Books.

The Out-door Relief Lists and Weekly Receipt and Expenditure Books of the several Relieving Officers were then produced by the Clerk, their accuracy having been previously ascertained by him, and authenticated by his signature.

The Abstract of the Out-door Relief Lists was also produced by the Clerk having been duly entered up by him for the last week ended Saturday, the \_\_\_\_\_ day of \_\_\_\_\_ 186\_\_\_\_, whereby it appeared that in that week the Total Expenditure in Out-door Relief was

|           |   |   |   |   |   |    |
|-----------|---|---|---|---|---|----|
| In money. | - | - | - | £ | . | d. |
| In kind.  | - | - | - |   |   |    |
| Total.    | - | - | - |   |   |    |

Credit each Relieving Officer, as per Receipt and Expenditure Book.

The requirements of each Relieving Officer for the ensuing week having been duly considered and estimated by the Board, checks on the Treasurer and orders on Contractors were duly signed and delivered to each of them, of the following amounts and value, respectively:

| RELIEF DISTRICT. | Name of Relieving Officer. | By Check on Treasurer. |       | By Order on Contractors. |                | RELIEF DISTRICT. | Name of Relieving Officer. | By Check on Treasurer. |       | By Order on Contractors. |                |
|------------------|----------------------------|------------------------|-------|--------------------------|----------------|------------------|----------------------------|------------------------|-------|--------------------------|----------------|
|                  |                            | £                      | s. d. | Article and quantity.    | Value. £ s. d. |                  |                            | £                      | s. d. | Article and quantity.    | Value. £ s. d. |
| No. I.           |                            |                        |       |                          |                | Bt. forward      |                            |                        |       |                          |                |
| No. II.          |                            |                        |       |                          |                | No. X.           |                            |                        |       |                          |                |
| No. III.         |                            |                        |       |                          |                | No. XI.          |                            |                        |       |                          |                |
| No. IV.          |                            |                        |       |                          |                | No. XII.         |                            |                        |       |                          |                |
| No. V.           |                            |                        |       |                          |                | No. XIII.        |                            |                        |       |                          |                |
| No. VI.          |                            |                        |       |                          |                | No. XIV.         |                            |                        |       |                          |                |
| No. VII.         |                            |                        |       |                          |                | No. XV.          |                            |                        |       |                          |                |
| No. VIII.        |                            |                        |       |                          |                | No. XVI.         |                            |                        |       |                          |                |
| No. IX.          |                            |                        |       |                          |                | No. XVII.        |                            |                        |       |                          |                |
| Car. forwd.      |                            |                        |       |                          |                | TOTAL.           |                            |                        |       |                          |                |

Credit Treasurer with Checks.

Debit each Relieving Officer with Checks and Orders.

On the Report and recommendation of the Finance Committee the following Bills having been duly examined, and found to be correct, and in accordance with the several Orders, were directed to be paid, and Checks for the several amounts were duly drawn on the Treasurer and Signed, namely:

1. Clothing Account. £ s. d.

Debit Clothing Account and Credit Treasurer with the several sums as above.

2. Establishment Account.

Debit Establishment Account and Credit Treasurer with the several sums as above.

3. *Workhouse Invoice Account.*

| £ | s. | d. |
|---|----|----|
|   |    |    |

*Debit Workhouse Invoice Account and Credit Treasurer with the several sums as above.*

4. *Out-door Relief Invoice Account.*

| £ | s. | d. |
|---|----|----|
|   |    |    |

*Credit Treasurer and Debit Out-door Relief Invoice Account with the several sums as above.*

*The Clerk's Report of Vaccination was read—(this on the first meeting in every month.)—  
Number of successful cases.*

*The Report of the Visiting Committee was read, and Orders were made thereon as follows:*

Galway

Council Archives

*The Reports of the Master and other Officers were read and Orders made thereon as follows.*

The following Orders of the Poor Law Commissioners were laid before the Board, and directions given thereon as follows:

The following Letters from the Poor Law Commissioners and others were read by the Clerk and directions given to answer them respectively to the following effect, for Orders made on them respectively as follows:

P.L. Commissioners Circular letter N<sup>o</sup> 82 dated 1 May 1861  
Transmitting form for Return of Rates -

P.L. Commissioners letter N<sup>o</sup> 90 dated 2 May 1861  
Requiring Return of attendances of paupers

P.L. Commissioners circular letter N<sup>o</sup> 88 dated 3 May 1861  
Relative to Blind persons in the Workhouse -

P.L. Commissioners letter N<sup>o</sup> 1096 dated 6 May 1861  
Stating that the Rev H Darcy had resigned  
the office of Protestant Chaplain of the  
Workhouse -

Resolved That the Rev H Darcy having resigned  
the office of Protestant Chaplain of the W. House  
and the Commissioners having accepted the same

the Board of guardians being to unanimously  
express their regret that Mr Darcy should  
have considered it his duty to do so.

Signed

Edgar H Blake

Wm C Jones

Pursuant to notice of motion Thomas J Prior Esq  
J.P. proposed and E H Blake Esq J.P. seconded  
that Nuffin Sillerua & Cleghan be formed  
into a Dispersary District -

amendment - That <sup>the portion of District of</sup> ~~the union of~~ Clipden  
be subdivided into the two divisions herein  
set forth - viz

Clipden. Sillerua. Nuffin and Islands  
population 7,614 - Mallowen. Derryfeen  
Downlonghan. Erislaunan. population 6,657

Signed

Thos J Eastwood

R Macaulay

amendment That it would be ruinous  
to this already embarrassed union to make  
a fourth medical district in it that the Rates  
in part of this union are already 3/6 in the £  
that in the year ending 29<sup>th</sup> September 1859 the  
expenses under the Medical Charities Act  
amounted to over £500 which came  
very closely to one third the entire rates.  
that this is a fearful state of things  
and we call on the Commissioners to  
resist any steps taken in the direction which  
would increase the expenses under the  
Medical Charities Act as the Board



feel the duties have been amply attended when only two medical men were in charge of the entire union. This in the recollection of this Board that two of the present medical men had agreed to discharge the entire duties of the union -

Signed

M R. Hart

Wm ferate

For Mr Hart's amendment -

Messrs. Robertson. Wroughton. Conroy Campbell. King. Malley. Morris. ferate Jones. O'Neill. Hart. Walle. Chairman - 13

Against Amendment - Messrs. Prior. Blake Macaulay. Eastwood. 4

Mr Sheu declined to vote -

The cases of provisional relief, and applications for relief were considered and decided on, as set forth in the Application and Report Books.

The number of provisional admissions to the Workhouse confirmed was

Ditto disallowed

The number of applicants admitted to the Workhouse was

The number of cases of provisional Out-door relief was

Do. do. in which relief was continued by the Guardians

The number of other applicants in the Pochting Officer's Books relieved by order of the Guardians was

The number of applicants for whom relief was not ordered

The Bonds and other securities in force were laid before the Guardians by the Clerk, together with his Report thereon, as follows: (this on the second Meeting after the Annual Election in every year.)

Resolved - That the Board having carefully examined the Collectors accounts. find the three Collectors have acted most satisfactorily and deserve great credit for their collections up to this date and that they get now one fortnight from this day to close all their ~~own~~ collections

Signed

Thos J Prior

Patrick King

Ordered that Nicholas Lynch be processed for the arrears standing against him in Mr P. Pye. Collection -

Ed Robinson Chairman

J. J. Jones

Anthony James Morris

Next Meeting of the Guardians to be held on *Wednesday*, the  
*15* day of *May* 1861

(Signed) *Wm. M. M. M.*  
Clerk of the Union.

Galway County Council Archives

Galway County Council Archives



14 and 15 Vic., c. 68,  
[No. 27.]

MINUTES OF PROCEEDINGS of the BOARD of GUARDIANS of the \_\_\_\_\_ UNION,  
on \_\_\_\_\_ day, the \_\_\_\_\_ day of \_\_\_\_\_ 186 .—continued.

SUPPLEMENTAL SHEET:—MEDICAL CHARITIES ACT, 14 & 15 Vic., cap. 68; and  
NUISANCES REMOVAL AND DISEASES PREVENTION ACTS, 1848 & 1849.

*An Estimate of Medicines, &c., required by the Medical Officer of the \_\_\_\_\_  
Dispensary District, approved by the Committee of Management, was laid before the Board, with a  
Requisition from the Committee for the supply of the same, and Directions were given thereon  
as follows:*

*An Invoice of Medicines forwarded by the Contractor, for the \_\_\_\_\_  
Dispensary District, in pursuance of an Order of the Board in their Minutes of \_\_\_\_\_  
having been received from him, the Clerk laid the Invoice before the Board, and (was directed to  
forward the same, or reported that he had forwarded the same, as the case may be,) to the Medical  
Officer of the District, retaining a Copy of the Invoice for the use of the Guardians.*

*On application of the Committee of Management of the \_\_\_\_\_  
Dispensary District, the following supplies of Books, Stationery, Forms, or other requisites were  
ordered to be supplied:*

The following Accounts of Expenses, (or Statement of Salaries due as the case may be,) under the Medical Charities Act, were laid before the Board, and Directions were given for Payment thereof (or such other directions as may be given:)

Dispensary District, \_\_\_\_\_  
Account of Mr. \_\_\_\_\_ for \_\_\_\_\_: Amount £ \_\_\_\_\_

[This at the end of each half-year, in pursuance of Articles 28 and 29 of the General Rules for Dispensary Districts, dated 16th December, 1853.]

An Account of the Expenses incurred for the service of each Dispensary District in the Union, for the half-year ended \_\_\_\_\_ 186\_\_\_\_, having been submitted to the Board, the Clerk was directed to furnish to the Committee of each Dispensary District a statement of all the Expenses of the District which have been included in the half-year's accounts. The following is the total Expense incurred for each Dispensary District for the half-year ended \_\_\_\_\_ 186\_\_\_\_.

|                           |   |
|---------------------------|---|
| _____ District, . . . . . | £ |
| _____ District, . . . . . | £ |

Galway County

[This to be entered on the occasion of every appointment of a new Committee, after the annual Election of Guardians, and on the occasion of any election to fill any vacancies in a Dispensary Committee].

The Board elected the following Post-payers to be Members of the Committees of Management of the following Dispensary Districts, respectively:—the Clerk to make a Return accordingly to the Poor Law Commissioners, and to give the prescribed Notification to the Members elected, and to the Medical Officers of the respective Dispensary Districts, in pursuance of Articles 1, 2 and 3 of the General Regulations for Dispensary Districts.—The Clerk was also directed to supply Check Books of Medical Relief Tickets, (Forms E. 1 and E. 2,) in pursuance of Article 27 of the Dispensary Regulations, to the new Members of the Committees; namely:—

\_\_\_\_\_ Dispensary District, Mr. \_\_\_\_\_ of \_\_\_\_\_

The following Orders of the Poor Law Commissioners under the Medical Charities Act were laid before the Board and directions given thereon as follows:

Order dated \_\_\_\_\_ (state subject.)

The following Letters on matters arising under the Medical Charities Act or the Nuisances Removal and Diseases Prevention Acts, from the Poor Law Commissioners and others, were read by the Clerk, and directions given to answer them respectively, to the following effect (or Orders were made on them respectively as follows:)

Read Letter from \_\_\_\_\_ dated \_\_\_\_\_ stating that \_\_\_\_\_

Population in 1851—

Present Net Annual Value, ... £

STATE of the WORKHOUSE for the Week ending Saturday, the 11<sup>th</sup> day of May 1861

Table with columns for Number of Inmates for which accommodation is provided, No. that can be accommodated, Total No. in each building, Able-bodied (Males, Fem.), Aged and Infirm persons, Boys and Girls, Children above 5 and under 9 years of age, Children above 2 and under 5 years of age, Infants under 2 years of age, RETURN OF SICK AND LUNATICS (Number in Hospital, No. of Lunatics and Idiots in Workhouse), and OBSERVATIONS.

RETURN of DESTITUTE PERSONS relieved out of the Workhouse, as by Relief Lists, for the last Week ended Saturday, the \_\_\_\_\_ day of \_\_\_\_\_ authenticated and laid before the Board of Guardians at this Meeting.

Table with columns for RELIEF DISTRICT, Destitute Persons relieved out of the Workhouse under 10 Vict. c. 31, s. 1., Destitute Persons relieved out of the Workhouse, but not comprised in Sec. 1., Total relieved out of the Workhouse (Cases, Persons), RELIEF DISTRICT, Destitute Persons relieved out of the Workhouse under 10 Vict. c. 31, s. 1., Destitute Persons relieved out of the Workhouse, but not comprised in Sec. 1., and Total relieved out of the Workhouse (Cases, Persons).

COPY of MINUTES of Proceedings of the Board of Guardians, at a Meeting held on Wednesday, the 15<sup>th</sup> day of May 1861

PRESENT: In the Chair, Geo. J. Robinson Esq J.P. Other Guardians: Thomas J. Prior Esq J.P., Thomas J. Suckwood "

M. R. Hart Esq, John Gerald, A. J. Morris Esq, C. R. Moughton "

(Signed) \_\_\_\_\_ Clerk of the Union.

The Minutes of last Meeting were read and Signed.



Notices of Marriage between the parties hereunder named having been received from the District Registrar by the Clerk, were duly read at the Board this day in accordance with the 15th section of the 7 & 8 Vic., c. 81.

\_\_\_\_\_

\_\_\_\_\_

\_\_\_\_\_

The Workhouse Register was produced, examined, and authenticated, from No. \_\_\_\_\_ to No. \_\_\_\_\_, both inclusive, by the signature of the Chairman, and countersignature of the Clerk.

The Out-door Relief Register was produced, examined, and authenticated from No. \_\_\_\_\_ to No. \_\_\_\_\_, inclusive, by the signature of the Chairman and countersignature of the Clerk.

The Clerk's Report on the execution of Orders previously made by the Board was read, to the following effect:

Rent of Clifden Dispensary, £10-10-0

The Ledger was produced by the Clerk, posted up to the last day of Meeting, with the proper Debits and Credits, as ordered on that day.

The Treasurer's Book of Receipts and Payments was produced, by which it appeared that there had been received during the week - - - - - £10-5-1

Paid during the week. - - - - - £ 2 - - -

And that the Balance on the Account of the Guardians was - £387-11-1

The Book was signed by the Chairman.

The Weekly balance-sheets of the several Collectors were laid before the Board, their accuracy having been first ascertained and authenticated by the Clerk.

The Lodgments made of Rates collected in the several Electoral Divisions appear to have been as follows:—

| Name of each Collector. | Electoral Divisions arranged in Collectors' Districts. | Collected and Lodged. |    |    | Total. |    |    | Remaining. |    |    | Total. |    |     |
|-------------------------|--|-----------------------|----|----|--------|----|----|------------|----|----|--------|----|-----|
|                         |  | £                     | s. | d. | £      | s. | d. | £          | s. | d. | £      | s. | d.  |
| Francis Muller          | Ballinacilly   |                       |    |    |        |    |    |            |    |    |        |    |     |
|                         | Bunowen  |                       |    |    |        |    |    | 15         | 17 | 8  |        |    |     |
|                         | Clifden  |                       |    |    |        |    |    | 45         | -  | 7  |        |    |     |
|                         | Derrycumbra  |                       |    |    |        |    |    | "          | "  | "  |        |    |     |
|                         | Derrylea   |                       |    |    |        |    |    | 2          | 17 | 7½ |        |    |     |
|                         | Dovelloughan   |                       |    |    |        |    |    | 4          | 16 | 10 |        |    |     |
| Joseph McDonnell        | Ennisteman   |                       |    |    |        |    |    | 1          | 17 | 5  |        |    |     |
|                         | Sillanun   |                       |    |    |        |    |    | 7          | 3  | 5½ |        |    |     |
|                         |  |                       |    |    | 5      |    |    |            |    |    | 77     | 13 | 7   |
| John Ryan               | Ballinacilly   |                       |    |    |        |    |    | 2          | 15 | 4  |        |    |     |
|                         | Cleggan  |                       |    |    |        |    |    | "          | 18 | ½  |        |    |     |
|                         | Cashkillyn   |                       |    |    |        |    |    | 2          | 15 | 7½ |        |    |     |
|                         | Keshbeggin   |                       |    |    |        |    |    | "          | "  | "  |        |    |     |
|                         | Renryfe  | 10                    | 6  | 1  |        |    |    | 10         | 6  | 1  | 20     | 5  | 3½  |
| Peter Ryan              | Alenon   |                       |    |    |        |    |    | 4          | 2  | 3  |        |    |     |
|                         | Ellion   |                       |    |    |        |    |    | 3          | 8  | 0  |        |    |     |
|                         | Keshbeggin   |                       |    |    |        |    |    | 3          | 16 | 7½ |        |    |     |
|                         | Moyrus   |                       |    |    |        |    |    | -          | 12 | 8  |        |    |     |
|                         | Owenagulla   |                       |    |    |        |    |    | 1          | 11 | 5  |        |    |     |
|                         | Roundstone   |                       |    |    |        |    |    | 4          | 7  | 4  |        |    |     |
| Skarnive                |  |                       |    |    |        |    | 1  | 10         | 8½ |    |        |    |     |
|                         |  |                       |    |    | 5      |    |    |            |    |    | 19     | 9  | 0   |
|                         |  |                       |    |    |        |    |    |            |    |    | 106    | 1  |     |
|                         |  |                       |    |    |        |    |    |            |    |    | 117    | 7  | 10½ |

Note.—A total is to be inserted in Red Ink at the foot of each Collector's District, as well as for the entire Union.

Debit the Treasurer and Credit the several Electoral Divisions with the respective amounts lodged.

The Clerk's Account of petty Disbursements made by him since last Meeting, amounting to £ \_\_\_\_\_ was produced and passed.

The following Books were exhibited by the Clerk, he having first ascertained the accuracy of the entries made therein by the Master of the Workhouse, and authenticated the same by his signature:

1. The Weekly Relief List and Abstract.
2. The Provision Check Accounts.
3. The Provision Receipt and Consumption Account.

By which it appeared that the Cost of Provisions and Necessaries received during the week was £ 19 - 3 s. 2 d.

£ s. d.

Debit Provision Account, and Credit Invoice Account.

The Cost of Provisions and Necessaries consumed was - - 17:19:10

Debit Maintenance Account, and Credit Provision Account.

And the general average Cost of an Inmate for the week was - : 2:5

Average cost in Infirmary, - - - - : 3:7

Average cost in Fever Hospital, - - - - : :

The Master's estimate of Provisions and Necessaries required for the ensuing week was examined, and Orders were duly made for the several articles specified, namely:

700 lb Mead  
 82 " Meat  
 2 cwt Omeal  
 2 " Lmeal  
 1 gal Whiskey  
 600 qt Milk  
 112 lb Salt  
 13/4 " Tea  
 20 " Sugar

1 1/2 lb Soap sugar  
 8 Sheepheads  
 10 Pringles Potu  
 35 boxes Milk  
 4 lb Candles  
 56 " Soap

The following Books were also produced by the Clerk, their accuracy having been previously ascertained by him, and authenticated by his signature:

1. The several Clothing Accounts.
2. The Medical Officers' Books.

The Out-door Relief Lists and Weekly Receipt and Expenditure Books of the several Relieving Officers were then produced by the Clerk, their accuracy having been previously ascertained by him, and authenticated by his signature.

The Abstract of the Out-door Relief Lists was also produced by the Clerk having been duly entered up by him for the last week ended Saturday, the \_\_\_\_\_ day of \_\_\_\_\_ 186\_\_\_\_, whereby it appeared that in that week the Total Expenditure in Out-door Relief was

In money, - - - - £ s. d.  
 In kind, - - - -  
 Total, - - - -

Credit each Relieving Officer, as per Receipt and Expenditure Book.

The requirements of each Relieving Officer for the ensuing week having been duly considered and estimated by the Board, checks on the Treasurer and orders on Contractors were duly signed and delivered to each of them, of the following amounts and value, respectively:

| RELIEF DISTRICT. | Name of Relieving Officer. | By Check on Treasurer.<br>£ s. d. | By Order on Contractors. |                   | RELIEF DISTRICT. | Name of Relieving Officer. | By Check on Treasurer.<br>£ s. d. | By Order on Contractors. |                   |
|------------------|----------------------------|-----------------------------------|--------------------------|-------------------|------------------|----------------------------|-----------------------------------|--------------------------|-------------------|
|                  |                            |                                   | Article and quantity.    | Value.<br>£ s. d. |                  |                            |                                   | Article and quantity.    | Value.<br>£ s. d. |
| No. I.           |                            |                                   |                          |                   | Bt. forward      |                            |                                   |                          |                   |
| No. II.          |                            |                                   |                          |                   | No. X.           |                            |                                   |                          |                   |
| No. III.         |                            |                                   |                          |                   | No. XI.          |                            |                                   |                          |                   |
| No. IV.          |                            |                                   |                          |                   | No. XII.         |                            |                                   |                          |                   |
| No. V.           |                            |                                   |                          |                   | No. XIII.        |                            |                                   |                          |                   |
| No. VI.          |                            |                                   |                          |                   | No. XIV.         |                            |                                   |                          |                   |
| No. VII.         |                            |                                   |                          |                   | No. XV.          |                            |                                   |                          |                   |
| No. VIII.        |                            |                                   |                          |                   | No. XVI.         |                            |                                   |                          |                   |
| No. IX.          |                            |                                   |                          |                   | No. XVII.        |                            |                                   |                          |                   |
| Car. forwd.      |                            |                                   |                          |                   | TOTAL,           |                            |                                   |                          |                   |

Credit Treasurer with Checks.

Debit each Relieving Officer with Checks and Orders.

On the Report and recommendation of the Finance Committee the following Bills having been duly examined, and found to be correct, and in accordance with the several Orders, were directed to be paid, and Checks for the several amounts were duly drawn on the Treasurer and Signed, namely:

1. Clothing Account.

£ s. d.

Debit Clothing Account and Credit Treasurer with the several sums as above.

2. Establishment Account.

Debit Establishment Account and Credit Treasurer with the several sums as above.

3. Warehouse Invoice Account.

| £ | s. | d. |
|---|----|----|
|   |    |    |

Debit Warehouse Invoice Account and Credit Treasurer with the several sums as above.

4. Out-door Relief Invoice Account.

| £ | s. | d. |
|---|----|----|
|   |    |    |

Credit Treasurer and Debit Out-door Relief Invoice Account with the several sums as above.

The Clerk's Report of Vaccination was read—(this on the first meeting in every month.)—  
Number of successful cases.

The Report of the Visiting Committee was read, and Orders were made thereon as follows:

Galway

The Reports of the Master and other Officers were read and Orders made thereon as follows:

- Required for masters use
- 2 Table cloths
  - 2 cups & saucers
  - 2 Tea spoons
  - 2 Muddlers & presses
  - 3 Bowl,
  - 1 Jug
  - 1 Tea pot

Ordered \_\_\_\_\_



The following Orders of the Poor Law Commissioners were laid before the Board, and directions given thereon as follows:

The following Letters from the Poor Law Commissioners and others were read by the Clerk and directions given to answer them respectively to the following effect for Orders made on them respectively as follows:—

2 Commissioners Circular letter N<sup>o</sup> 103, 13<sup>th</sup> May  
Transmitting form for Return of officers—  
with reference to Superannuation —

Read letter from Secretary of Census Commission  
stating that the Census Act does not authorize  
the Commissioners to give any remuneration to the  
parties who are required to fill the Returns in  
the several Public Institutions —

Martin P. Hart  
Walter S. Wood  
Anthony J. Morris

The cases of provisional relief, and applications for relief were considered and decided on, as set forth in the Application and Report Books.

The number of provisional admissions to the Workhouse confirmed was - -

Ditto disallowed - - - - -

The number of applicants admitted to the Workhouse was - -

The number of cases of provisional Out-door relief was - - - -

Do. do. in which relief was continued by the Guardians - - - -

The number of other applicants in the Relieving Officer's Books relieved by order of the Guardians was - - - -

The number of applicants for whom relief was not granted

The Bonds and other securities in force were laid before the Guardians by the Clerk, together with his Report thereon, as follows: (this on the second Meeting after the Annual Election in every year.)

Galway County Council Archives

Next Meeting of the Guardians to be held on *Wednesday* the  
*22* day of *May*

1861  
(Signed) *John Burke*  
Clerk of the Union.

Galway County Council Archives



Galway County Council Archives

14 and 15 Vic., c. 68.  
[No. 27.]

MINUTES of PROCEEDINGS of the BOARD of GUARDIANS of the \_\_\_\_\_ UNION,  
on \_\_\_\_\_ day, the \_\_\_\_\_ day of \_\_\_\_\_ 186 \_\_\_\_\_, —continued.

SUPPLEMENTAL SHEET:—MEDICAL CHARITIES ACT, 14 & 15 Vic., cap. 68; and  
NUISANCES REMOVAL AND DISEASES PREVENTION ACTS, 1848 & 1849.

*An Estimate of Medicines, &c., required by the Medical Officer of the \_\_\_\_\_  
Dispensary District, approved by the Committee of Management, was laid before the Board, with a  
Requisition from the Committee for the supply of the same, and Directions were given thereon  
as follows:*

*An Invoice of Medicines forwarded by the Contractor, for the \_\_\_\_\_  
Dispensary District, in pursuance of an Order of the Board in their Minutes of \_\_\_\_\_  
having been received from him, the Clerk laid the Invoice before the Board, and (was directed to  
forward the same, or reported that he had forwarded the same, as the case may be,) to the Medical  
Officer of the District, retaining a Copy of the Invoice for the use of the Guardians.*

*On application of the Committee of Management of the \_\_\_\_\_  
Dispensary District, the following supplies of Books, Stationery, Forms, or other requisites were  
ordered to be supplied:*

Galway County Council Archives

The following Accounts of Expenses, (or Statement of Salaries due as the case may be,) under the Medical Charities Act, were laid before the Board, and Directions were given for Payment thereof (or such other directions as may be given:)

Dispensary District, \_\_\_\_\_  
Account of Mr. \_\_\_\_\_ for \_\_\_\_\_: Amount £

[This at the end of each half-year, in pursuance of Articles 28 and 29 of the General Rules for Dispensary Districts, dated 16th December, 1853.]

An Account of the Expenses incurred for the service of each Dispensary District in the Union, for the half-year ended \_\_\_\_\_ 186\_\_\_\_, having been submitted to the Board, the Clerk was directed to furnish to the Committee of each Dispensary District a statement of all the Expenses of the District which have been included in the half-year's accounts. The following is the total Expense incurred for each Dispensary District for the half-year ended \_\_\_\_\_ 186\_\_\_\_.

|                 |       |   |
|-----------------|-------|---|
| _____ District, | ..... | £ |
| _____ District, | ..... | £ |

[This to be entered on the occasion of every appointment of a new Committee, after the annual Election of Guardians, and on the occasion of any election to fill any vacancies in a Dispensary Committee].

The Board elected the following Poets-payers to be Members of the Committees of Management of the following Dispensary Districts, respectively:—the Clerk to make a Return accordingly to the Poor Law Commissioners, and to issue the prescribed Notification to the Members elected, and to the Medical Officers of the respective Dispensary Districts, in pursuance of Articles 1, 2, and 3 of the General Regulations for Dispensary Districts.—The Clerk was also directed to supply Check Books of Medical Relief Tickets, (Forms E, and E 2,) in pursuance of Article 27 of the Dispensary Regulations, to the new Members of the Committees; namely:—

\_\_\_\_\_ Dispensary District, Mr. \_\_\_\_\_ of \_\_\_\_\_

The following Orders of the Poor Law Commissioners under the Medical Charities Act, were laid before the Board and directions given thereon as follows:

Order dated \_\_\_\_\_ (state subject.)



The following Letters on matters arising under the Medical Charities Act or the Nuisances Removal and Diseases Prevention Acts, from the Poor Law Commissioners and others, were read by the Clerk, and directions given to answer them respectively, to the following effect (or Orders were made on them respectively as follows:)

Read Letter from \_\_\_\_\_ dated \_\_\_\_\_ stating that \_\_\_\_\_

Clifton UNION.

Population in 1851—

Present Net Annual Value, ...£

STATE of the WORKHOUSE for the Week ending Saturday, the 18<sup>th</sup> day of May 1861

Table with columns: Number of inmates for which accommodation is provided, No. that can be accommodated, Total No. in each building, Able-bodied, Aged and Infirm persons, Boys and Girls, Children above 5 and under 9 years of age, Children above 2 and under 5 years of age, Infants under 2 years of age, RETURN OF SICK AND LUNATICS, OBSERVATIONS.

RETURN of DESTITUTE PERSONS relieved out of the Workhouse, as by Relief Lists, for the last Week ended Saturday, the \_\_\_\_\_ day of \_\_\_\_\_ authenticated and laid before the Board of Guardians at this Meeting.

Table with columns: RELIEF DISTRICT, Destitute Persons relieved out of the Workhouse under 10 Vict. c. 31, s. 1., Number of Persons, including Applicant and Family, dependent on him or her, Total relieved out of the Workhouse, RELIEF DISTRICT, Destitute Persons relieved out of the Workhouse under 10 Vict. c. 31, s. 1., Number of Persons, including Applicant and Family, dependent on him or her, Total relieved out of the Workhouse.

COPY of MINUTES of Proceedings of the Board of Guardians, at a Meeting held on Wednesday

the 22 day of May 1861

PRESENT: In the Chair,

M R Hart sen W.

Other Guardians:

A. J. Morris Esq  
W. S. Wallis  
Patrick Macaulay Esq

Dr. Modie Esq

The Minutes of last Meeting were read and Signed.

(Signed)

Book of the Union

*Notices of Marriage between the parties hereunder named having been received from the District Registrar by the Clerk, were duly read at the Board this day in accordance with the 15th section of the 7 & 8 Vic., c. 81.*

*The Workhouse Register was produced, examined, and authenticated, from No. 30445 to No. 30574, both inclusive, by the signature of the Chairman, and countersignature of the Clerk.*

*The Out-door Relief Register was produced, examined, and authenticated from No. \_\_\_\_\_ to No. \_\_\_\_\_, inclusive, by the signature of the Chairman and countersignature of the Clerk.*

*The Clerk's Report on the execution of Orders previously made by the Board was read, to the following effect:*

*The Ledger was produced by the Clerk, posted up to the last day of Meeting, with the proper Debits and Credits, as ordered on that day.*

*The Treasurer's Book of Receipts and Payments was produced, by which it appeared that there had been received during the week - - - - £ 32-4-1*

*Paid during the week - - - - £ 0 0 0*

*And that the Balance on the Account the Guardians was - £413-15-2*

*The Book was signed by the Chairman.*

*The Weekly balance-sheets of the several Collectors were laid before the Board, their accuracy having been first ascertained and authenticated by the Clerk.*

*The Lodgments made of Rates collected in the several Electoral Divisions appear to have been as follows:—*

| Name of each Collector. | Electoral Divisions arranged in Collectors' Districts. | Collected and Lodged. |    |    | Total. |    |    | Remaining. |    |     | Total. |    |    |
|-------------------------|--|-----------------------|----|----|--------|----|----|------------|----|-----|--------|----|----|
|                         |  | £                     | s. | d. | £      | s. | d. | £          | s. | d.  | £      | s. | d. |
| Francis Muller          | Bunowen  | 12                    | 16 | 1  |        |    |    | 1          | 1  | 7   |        |    |    |
|                         | Clifden  | 8                     | 18 | 2½ |        |    |    | 3          | 6  | 4½  |        |    |    |
|                         | Derrycaule   |                       |    |    |        |    |    | "          | "  | "   |        |    |    |
|                         | Derrylea   |                       |    |    |        |    |    | 2          | 17 | 2½  |        |    |    |
|                         | Dooonaghew   |                       |    |    |        |    |    | 4          | 16 | 10  |        |    |    |
|                         | Ennistemon   | "                     | 8  | 2½ |        |    |    | 1          | 9  | 2½  |        |    |    |
| Joseph McDermott        | Sillern  | 2                     | 18 | 1½ |        |    |    | 4          | 5  | 4   |        |    |    |
|                         |  |                       |    |    | 27     | 0  | 7½ |            |    |     | 50     | 12 | 6½ |
|                         | Gallinkeh  | "                     | "  | "  |        |    |    | 2          | 15 | 4   |        |    |    |
|                         | Cleggan  | "                     | "  | "  |        |    |    | "          | 18 | ½   |        |    |    |
|                         | Cash Killen  | "                     | "  | "  |        |    |    | 2          | 15 | 7½  |        |    |    |
|                         | Mishkappa  | "                     | "  | "  |        |    |    | "          | "  | "   |        |    |    |
| Patrick Rye             | Renvyle  | "                     | "  | "  |        |    |    | 13         | 16 | 3½  |        |    |    |
|                         |  |                       |    |    | 0      |    |    |            |    |     | 20     | 5  | 3½ |
|                         | Orecon   | 1                     | 0  | 2  |        |    |    | 4          | 2  | 3   |        |    |    |
|                         | Ellion   | 3                     | 4  | 6  |        |    |    | "          | 3  | 6   |        |    |    |
|                         | Knockboy   | "                     | 8  | 3  |        |    |    | 3          | "  | 10½ |        |    |    |
|                         | Moyrus   | "                     | "  | "  |        |    |    | "          | "  | "   |        |    |    |
| Patrick Rye             | Owenpoule  | "                     | "  | "  |        |    |    | 1          | 11 | 5   |        |    |    |
|                         | Romdeton   | "                     | 10 | 6½ |        |    |    | 3          | 16 | 9½  |        |    |    |
|                         | Skannide   | "                     | "  | "  |        |    |    | 1          | 10 | 8½  |        |    |    |
|                         |  |                       |    |    | 5      | 3  | 5½ |            |    |     | 14     | 5  | 6½ |
|                         |  |                       |    |    | 32     | 4  | 1  |            |    |     | 85     | 3  | 4½ |

*NOTE—A total is to be inserted in Red Ink at the foot of each Collector's District, as well as for the entire Union.*

*Debit the Treasurer and Credit the several Electoral Divisions with the respective amounts lodged.*



The Clerk's Account of petty Disbursements made by him since last Meeting, amounting to £ \_\_\_\_\_ was produced and passed.

The following Books were exhibited by the Clerk, he having first ascertained the accuracy of the entries made therein by the Master of the Workhouse, and authenticated the same by his signature:

1. The Weekly Relief List and Abstract.
2. The Provision Check Accounts.
3. The Provision Receipt and Consumption Account.

By which it appeared that the Cost of Provisions and Necessaries received during the week was £ 18 - 5 s. 5 d.

Debit Provision Account, and Credit Invoice Account.

The Cost of Provisions and Necessaries consumed was - - - 17 : 4 : 6

Debit Maintenance Account, and Credit Provision Account.

And the general average Cost of an Inmate for the week was - : 2 : 5

Average cost in Infirmary, - - - - - : 3 : 7

Average cost in Fever Hospital, - - - - - : : :

The Master's estimate of Provisions and Necessaries required for the ensuing week was examined, and Orders were duly made for the several articles specified, namely:

|                |                    |
|----------------|--------------------|
| 740 lbs Bread  | 16 Bottles of Port |
| 82 " meat      | 35 boxes Soap      |
| 640 qrs milk   | 3 lbs candles      |
| 134 lbs Tea    |                    |
| 20 " Sugar     |                    |
| 1 " Soap Sugar |                    |
| 8 Sheepheads   |                    |
| 1 lb Pepper    |                    |
| 2 cwt S. meat  |                    |

The following Books were also produced by the Clerk, their accuracy having been previously ascertained by him, and authenticated by his Signature:

1. The several Clothing Accounts.
2. The Medical Officers' Books.

The Out-door Relief Lists and Weekly Receipt and Expenditure Books of the several Relieving Officers were then produced by the Clerk, their accuracy having been previously ascertained by him, and authenticated by his signature.

The Abstract of the Out-door Relief Lists was also produced by the Clerk having been duly entered up by him for the last week ended Saturday, the day of \_\_\_\_\_ 186\_\_\_\_, whereby it appeared that in that week the Total Expenditure in Out-door Relief was

|           |   |   |   |   |   |   |
|-----------|---|---|---|---|---|---|
| In money. | - | - | - | £ | . | . |
| In kind.  | - | - | - |   |   |   |
| Total.    | - | - | - |   |   |   |

Credit each Relieving Officer, as per Receipt and Expenditure Book.

The requirements of each Relieving Officer for the ensuing week having been duly considered and estimated by the Board, checks on the Treasurer and orders on Contractors were duly signed and delivered to each of them, of the following amounts and value, respectively:

| RELIEF DISTRICT. | Name of Relieving Officer. | By Check on Treasurer.<br>£ s. d. | By Order on Contractors. |                   | RELIEF DISTRICT. | Name of Relieving Officer. | By Check on Treasurer.<br>£ s. d. | By Order on Contractors. |                   |
|------------------|----------------------------|-----------------------------------|--------------------------|-------------------|------------------|----------------------------|-----------------------------------|--------------------------|-------------------|
|                  |                            |                                   | Article and quantity.    | Value.<br>£ s. d. |                  |                            |                                   | Article and quantity.    | Value.<br>£ s. d. |
| No. I.           |                            |                                   |                          |                   | Bt. forward      |                            |                                   |                          |                   |
| No. II.          |                            |                                   |                          |                   | No. X.           |                            |                                   |                          |                   |
| No. III.         |                            |                                   |                          |                   | No. XI.          |                            |                                   |                          |                   |
| No. IV.          |                            |                                   |                          |                   | No. XII.         |                            |                                   |                          |                   |
| No. V.           |                            |                                   |                          |                   | No. XIII.        |                            |                                   |                          |                   |
| No. VI.          |                            |                                   |                          |                   | No. XIV.         |                            |                                   |                          |                   |
| No. VII.         |                            |                                   |                          |                   | No. XV.          |                            |                                   |                          |                   |
| No. VIII.        |                            |                                   |                          |                   | No. XVI.         |                            |                                   |                          |                   |
| No. IX.          |                            |                                   |                          |                   | No. XVII.        |                            |                                   |                          |                   |
| Car. forwd.      |                            |                                   |                          |                   | TOTAL,           |                            |                                   |                          |                   |

Credit Treasurer with Checks.

Debit each Relieving Officer with Checks and Orders.

On the Report and recommendation of the Finance Committee the following Bills having been duly examined, and found to be correct, and in accordance with the several Orders, were directed to be paid, and Checks for the several amounts were duly drawn on the Treasurer and Signed, namely:

1. Clothing Account.

£ s. d.

Debit Clothing Account and Credit Treasurer with the several sums as above.

2. Establishment Account.

Debit Establishment Account and Credit Treasurer with the several sums as above.





The following Orders of the Poor Law Commissioners were laid before the Board, and directions given thereon as follows:

The following Letters from the Poor Law Commissioners and others were read by the Clerk and directions given to answer them respectively to the following effect, for Orders made on them respectively as follows:

Comm. circular letter N<sup>o</sup> 10755 Dated 13 May 61  
Transmitting form for Return of unidre  
officers &c

The tender of Wm Wyce for shuck-  
heads at 7<sup>d</sup> each. Deal 7<sup>d</sup> per quarter  
and Reef heads at 1/4 each for  
six months from this date. Same for six  
months from termination of said six months  
at 9<sup>d</sup> each. - was accepted -

Ordered that the collectors be called upon  
to close their accounts on this day week  
as far as is practicable and what  
is not recoverable bring it before the  
Board for their further orders

Ordered that the clerk do write to Mr Rochefort  
to know what has been done in the  
case of the petition against D. Min  
and to request he will take proceedings  
against Mr St. Lynch for poor rates  
due by him. Mr Rochefort be furnished  
with particulars

John Foran City D.V.C  
Anthony J. Morris  
Nicholas J. Boothman

The cases of provisional relief, and applications for relief were considered and decided on, as set forth in the Application and Report Books.

The number of provisional admissions to the Workhouse confirmed was - - - - -

Ditto disallowed - - - - -

The number of applicants admitted to the Workhouse was - - - - -

The number of cases of provisional Out-door relief was - - - - -

Do. do. in which relief was continued by the Guardians - - - - -

The number of other applicants in the Relieving Officer's Books relieved by order of the Guardians was - - - - -

The number of applicants for whom relief was not granted - - - - -

The Bonds and other securities in force were laid before the Guardians by the Clerk, together with his Report thereon, as follows: (this on the second Meeting after the Annual Election in every year.)

Galway County Council Archives



Next Meeting of the Guardians to be held on *Wednesday*, the  
*29<sup>th</sup>* day of *May* 1861  
 (Signed) *John Burke*  
 Clerk of the Union.

Galway County Council Archives

Galway County Council Archives

14 and 15 Vic., c. 68.  
[No. 27.]

MINUTES of PROCEEDINGS of the BOARD of GUARDIANS of the \_\_\_\_\_ UNION,  
on \_\_\_\_\_ day, the \_\_\_\_\_ day of \_\_\_\_\_ 186 \_\_\_\_—continued.

SUPPLEMENTAL SHEET:—MEDICAL CHARITIES ACT, 14 & 15 Vic., cap. 68; and  
NUISANCES REMOVAL AND DISEASES PREVENTION ACTS, 1848 & 1849.

*An Estimate of Medicines, &c., required by the Medical Officer of the \_\_\_\_\_  
Dispensary District, approved by the Committee of Management, was laid before the Board, with a  
Requisition from the Committee for the supply of the same, and Directions were given thereon  
as follows:*

*An Invoice of Medicines forwarded by the Contractor, for the \_\_\_\_\_  
Dispensary District, in pursuance of an Order of the Board in their Minutes of \_\_\_\_\_  
having been received from him, the Clerk laid the Invoice before the Board, and (was directed to  
forward the same, or reported that he had forwarded the same, as the case may be,) to the Medical  
Officer of the District, retaining a Copy of the Invoice for the use of the Guardians.*

*On application of the Committee of Management of the \_\_\_\_\_  
Dispensary District, the following supplies of Books, Stationery, Forms, or other requisites were  
ordered to be supplied:*



The following Accounts of Expenses, (or Statement of Salaries due as the case may be,) under the Medical Charities Act, were laid before the Board, and Directions were given for Payment thereof (or such other directions as may be given:)

Dispensary District  
Account of Mr. \_\_\_\_\_ for \_\_\_\_\_: Amount £

[This at the end of each half-year, in pursuance of Articles 28 and 29 of the General Rules for Dispensary Districts, dated 16th December, 1853.]

An Account of the Expenses incurred for the service of each Dispensary District in the Union, for the half-year ended \_\_\_\_\_ 186, having been submitted to the Board, the Clerk was directed to furnish to the Committee of each Dispensary District a statement of all the Expenses of the District which have been included in the half-year's accounts. The following is the total Expense incurred for each Dispensary District for the half-year ended \_\_\_\_\_ 186.

|          |   |
|----------|---|
| District | £ |
| District | £ |

[This to be entered on the occasion of every appointment of a new Committee, after the annual Election of Guardians, and on the occasion of any election to fill any vacancies in a Dispensary Committee]. The Board elected the following Rate-payers to be Members of the Committees of Management of the following Dispensary Districts, respectively:—the Clerk to make a Return accordingly to the Poor Law Commissioners, and to issue the prescribed Notification to the Members elected, and to the Medical Officers of the respective Dispensary Districts, in pursuance of Articles 1, 2 and 3 of the General Regulations for Dispensary Districts.—The Clerk was also directed to supply Check Books of Medical Relief Tickets, (Forms E 1 and E 2,) in pursuance of Article 27 of the Dispensary Regulations, to the new Members of the Committees; namely:—

Dispensary District, Mr. \_\_\_\_\_ of \_\_\_\_\_

The following Orders of the Poor Law Commissioners under the Medical Charities Act, were laid before the Board and directions given thereon as follows:

Order dated \_\_\_\_\_ (state subject.)

The following Letters on matters arising under the Medical Charities Act or the Nuisances Removal and Diseases Prevention Acts, from the Poor Law Commissioners and others, were read by the Clerk, and directions given to answer them respectively, to the following effect (or Orders were made on them respectively as follows:—)

Read Letter from \_\_\_\_\_ dated \_\_\_\_\_ stating that \_\_\_\_\_

Clifden UNION.

Population in 1851—

Present Net Annual Value, ...£

STATE of the WORKHOUSE for the Week ending Saturday, the 25 day of May 1861

Table with columns for accommodation types (Workhouse, Temporary Buildings, etc.), age groups (Able-bodied, Aged and Infirm, etc.), and return of sick and lunatics. Includes handwritten totals and dates.

RETURN of DESTITUTE PERSONS relieved out of the Workhouse, as by Relief Lists, for the last Week ended Saturday, the \_\_\_\_\_ day of \_\_\_\_\_ authenticated and laid before the Board of Guardians at this Meeting.

Table with columns for Relief District, Destitute Persons relieved out of the Workhouse, and Total relieved out of the Workhouse. Includes rows for No. I to No. IX and a Car. forward row.

COPY of MINUTES of Proceedings of the Board of Guardians, at a Meeting held on Wednesday the 29 day of May 1861

PRESENT: In the Chair, Mr. J. Robinson Esq. J.P.

Other Guardians:

Thomas J. Eastwood Esq. J.P.

A. J. Morris Esq.

H. S. Wallis

A. J. Maddin

Gartside Sheu Esq.

(Signed)

Clerk of the Union

The Minutes of last Meeting were read and Signed.

Notices of Marriage between the parties hereunder named having been received from the District Registrar by the Clerk, were duly read at the Board this day in accordance with the 13th section of the 7 & 8 Vic., c. 81.

The Workhouse Register was produced, examined, and authenticated, from No. 3255 to No. 3055, both inclusive, by the signature of the Chairman, and countersignature of the Clerk.

The Out-door Relief Register was produced, examined, and authenticated from No. \_\_\_\_\_ to No. \_\_\_\_\_, inclusive, by the signature of the Chairman and countersignature of the Clerk.

The Clerk's Report on the execution of Orders previously made by the Board was read, to the following effect:

The Ledger was produced by the Clerk, posted up to the last day of Meeting, with the proper Debits and Credits, as ordered on that day.

The Treasurer's Book of Receipts and Payments was produced, by which it appeared that there had been received during the week - £ 47-6-9½

Paid during the week - £ 15-3-6

And that the Balance on the Account furor of the Guardians was - £ 445-18-5½

The Book was signed by the Chairman.

The Weekly balance-sheets of the several Collectors were laid before the Board, their accuracy having been first ascertained and authenticated by the Clerk.

The Lodgments made of Rates collected in the several Electoral Divisions appear to have been as follows:—

| Name of each Collector. | Electoral Divisions arranged in Collectors' Districts. | Collected and Lodged. |    |     | Total. |    |    | Remaining. |    |    | Total. |    |    |
|-------------------------|--|-----------------------|----|-----|--------|----|----|------------|----|----|--------|----|----|
|                         |  | £                     | s. | d.  | £      | s. | d. | £          | s. | d. | £      | s. | d. |
| Francis Kettle          | Runover  | 1                     | 0  | 7½  |        |    |    |            |    |    |        |    |    |
|                         | Clifden  | 20                    | 17 | ½   |        |    |    | 15         | 5  | 4  |        |    |    |
|                         | Derrygulla   |                       |    |     |        |    |    |            |    |    |        |    |    |
|                         | Derryglan  | 2                     | 17 | 2½  |        |    |    |            |    |    |        |    |    |
|                         | Doonloghan   | 4                     | 16 | 10  |        |    |    |            |    |    |        |    |    |
|                         | Enniskerry   | 1                     | 8  | 6   |        |    |    |            |    |    |        |    |    |
|                         | Sillernu   | 4                     | 5  | 4   |        |    |    |            |    |    |        |    |    |
|                         |  |                       |    |     | 35     | 5  | 6½ |            |    |    | 15     | 7  | 0  |
| Joseph McDermott        | Pallinakil   | 2                     | 15 | 6   |        |    |    |            |    |    |        |    |    |
|                         | Clerygan   |                       | 18 | ½   |        |    |    |            |    |    |        |    |    |
|                         | Cashkillen   | 1                     | 12 | 6   |        |    |    | 1          | 3  | 1½ |        |    |    |
|                         | Irishbaggin  |                       |    |     |        |    |    |            |    |    |        |    |    |
|                         | Ruorpe   | 4                     | 13 | 11½ |        |    |    | 9          | 2  | 4  |        |    |    |
|                         |  |                       |    |     | 10     | 0  | 0  |            |    |    | 10     | 5  | 5½ |
| Patrick Byrne           | Pencow   |                       |    |     | 1      | 13 | 9  | 2          | 8  | 6  |        |    |    |
|                         | Shion  |                       |    |     |        |    |    |            | 3  | 6  |        |    |    |
|                         | Knockon  |                       |    |     |        | 7  | 6  | 2          | 13 | 4½ |        |    |    |
|                         | Moyras   |                       |    |     |        |    |    |            |    |    |        |    |    |
|                         | Owenpoule  |                       |    |     |        |    |    | 1          | 11 | 5  |        |    |    |
|                         | Romelstone   |                       |    |     |        |    |    | 3          | 16 | 9½ |        |    |    |
|                         | Skannive   |                       |    |     |        |    |    | 1          | 10 | 8½ |        |    |    |
|                         |  |                       |    |     | 2      | 1  | 3  |            |    |    | 12     | 4  | 3½ |
|                         |  |                       |    |     | 47     | 6  | 9½ |            |    |    | 37     | 16 | 9  |

Note.—A total is to be inserted in Red Ink at the foot of each Collector's District, as well as for the entire Union.

Debit the Treasurer and Credit the several Electoral Divisions with the respective amounts lodged.



The Clerk's Account of petty Disbursements made by him since last Meeting, amounting to £ \_\_\_\_\_ was produced and passed.

The following Books were exhibited by the Clerk, he having first ascertained the accuracy of the entries made therein by the Master of the Workhouse, and authenticated the same by his signature:

1. The Weekly Relief List and Abstract.
2. The Provision Check Accounts.
3. The Provision Receipt and Consumption Account.

By which it appeared that the Cost of Provisions and Necessaries received during the week was £ 18 - 9 s. 3 d.

£ s. d.

Debit Provision Account, and Credit Invoice Account.

The Cost of Provisions and Necessaries consumed was - - 16 : 10 : 24

Debit Maintenance Account, and Credit Provision Account.

And the general average Cost of an Inmate for the week was - : 2 : 4

Average cost in Infirmary, - - - - : 3 : 7

Average cost in Fever Hospital, - - - - : : :

The Master's estimate of Provisions and Necessaries required for the ensuing week was examined, and Orders were duly made for the several articles specified, namely:

88 lbs Bread  
 82 " Meat  
 2 cwt. Omeal  
 2 " Meal  
 590 qts milk  
 13/4 lbs Tea  
 18 " Sugar  
 1 " Soap sugar  
 8 Sheepheads

5 bottles of Port  
 2 boxes of turf  
 3 lbs Candles

The following Books were also produced by the Clerk, their accuracy having been previously ascertained by him, and authenticated by his signature:

1. The several Clothing Accounts.
2. The Medical Officers' Books.

The Out-door Relief Lists and Weekly Receipt and Expenditure Books of the several Relieving Officers were then produced by the Clerk, their accuracy having been previously ascertained by him, and authenticated by his signature.

The Abstract of the Out-door Relief Lists was also produced by the Clerk having been duly entered up by him for the last week ended Saturday, the \_\_\_\_\_ day of \_\_\_\_\_ 186\_\_\_\_, whereby it appeared that in that week the Total Expenditure in Out-door Relief was

In money, - - - - £ s. d.  
 In kind, - - - -  
 Total, - - - -

Credit each Relieving Officer, as per Receipt and Expenditure Book.

The requirements of each Relieving Officer for the ensuing week having been duly considered and estimated by the Board, checks on the Treasurer and orders on Contractors were duly signed and delivered to each of them, of the following amounts and value, respectively:

| RELIEF DISTRICT. | Name of Relieving Officer. | By Check on Treasurer. |       | By Order on Contractors. |                | RELIEF DISTRICT. | Name of Relieving Officer. | By Check on Treasurer. |       | By Order on Contractors. |                |
|------------------|----------------------------|------------------------|-------|--------------------------|----------------|------------------|----------------------------|------------------------|-------|--------------------------|----------------|
|                  |                            | £                      | s. d. | Article and quantity.    | Value. £ s. d. |                  |                            | £                      | s. d. | Article and quantity.    | Value. £ s. d. |
| No. I.           |                            |                        |       |                          |                | Bt. forward      |                            |                        |       |                          |                |
| No. II.          |                            |                        |       |                          |                | No. X.           |                            |                        |       |                          |                |
| No. III.         |                            |                        |       |                          |                | No. XI.          |                            |                        |       |                          |                |
| No. IV.          |                            |                        |       |                          |                | No. XII.         |                            |                        |       |                          |                |
| No. V.           |                            |                        |       |                          |                | No. XIII.        |                            |                        |       |                          |                |
| No. VI.          |                            |                        |       |                          |                | No. XIV.         |                            |                        |       |                          |                |
| No. VII.         |                            |                        |       |                          |                | No. XV.          |                            |                        |       |                          |                |
| No. VIII.        |                            |                        |       |                          |                | No. XVI.         |                            |                        |       |                          |                |
| No. IX.          |                            |                        |       |                          |                | No. XVII.        |                            |                        |       |                          |                |
| Car. forwd.      |                            |                        |       |                          |                | TOTAL.           |                            |                        |       |                          |                |

Credit Treasurer with Checks.

Debit each Relieving Officer with Checks and Orders.

On the Report and recommendation of the Finance Committee the following Bills having been duly examined, and found to be correct, and in accordance with the several Orders, were directed to be paid, and Checks for the several amounts were duly drawn on the Treasurer and Signed, namely:

1. Clothing Account.

£ s. d.

Debit Clothing Account and Credit Treasurer with the several sums as above.

2. Establishment Account.

Debit Establishment Account and Credit Treasurer with the several sums as above.



The following Orders of the Poor Law Commissioners were laid before the Board, and directions given thereon as follows:

The following Letters from the Poor Law Commissioners and others were read by the Clerk and directions given to answer them respectively to the following effect for Orders made on them respectively as follows:

P.L. Commissioners Letter No 11748 Dated 23 May 1861

Requesting to be informed whether the Board of Guardians deem it expedient that an order should be issued for an Election to supply a vacancy for the office of Guardian for the Queen's Electors division -

The Board are of opinion that an election order should be issued to supply the vacancy -

Commissioners letter No 1176 Dated 25 May 1861

Requesting to be furnished with observations of Guardians with reference to communication of Doctors Saffield & Tyner on the subject of medical Relief to Marshpoole Island

Resolved That having considered the letter of the Commissioners of 25<sup>th</sup> Inst. we are of opinion that the difficulty that at present exists will be best removed by equalizing the duties of the medical officers and which we consider will be best done by placing Marshpoole in the Rennyth Dispensary District as originally passed by this Board, 10 December 1851 and since recommended by the Board on 20 April 1861 -

Signed

Gartside Shea  
Anthony J Morris

Amendment That in answer to Commissioners letter of 25<sup>th</sup> Inst referring to the Medical District of this Union, this Board are of opinion that the Resolutions of 20<sup>th</sup> April - proposed by W Shea and Seconded by W Morris, was quite illegal as an amendment on the notice of motion of same date by W Hart and W Eastwood that consequently no change on that appeal for the Commissioners interference could take effect and consequently that the duties of medical officers to Rofin still belong both de jure and de facto to Doctor Saffield, and that this Board considers that W Hart's amendment of 6 May to the two Resolutions of same date consequently effects a retention of the old plan by which Rofin division belongs to Clifden District and



and that this Board are of opinion that that Resolution be not disturbed

Signed  
Thomas F Eastwood  
John Perutz

For Resolution

W Shea  
W Madkin  
W Morris  
W Wall

4

For amendment

W Perutz  
W Eastwood  
Chairman

3

Notice of motion -

Give notice that on this day fortnight I will ~~move~~ call the attention of the Board to the illegality of the Resolution of 20th April by W Shea and W Morris as an amendment upon the notice of motion of that day by W Madkin and W Eastwood

The cases of provisional relief, and applications for relief were considered and decided on, as set forth in the Application and Report Books.

The number of provisional admissions to the Workhouse confirmed was . . . . .

Ditto disallowed . . . . .

The number of applicants admitted to the Workhouse was . . . . .

The number of cases of provisional Out-door relief was . . . . .

Do. do. in which relief was continued by the Guardians . . . . .

The number of other applicants in the Relieving Officer's Books relieved by order of the Guardians was . . . . .

The number of applicants for whom relief was not ordered . . . . .

The Donor and other securities in force were laid before the Guardians by the Clerk, together with his Report thereon, as follows: (this on the second Meeting after the Annual Election in every year.)

and to submit the same to the Commission

Signed  
Thomas F Eastwood

Response Letter 6<sup>th</sup> 12 287 Dated 28 May 1881  
stating that Doctor Madie reports that the south wing of dining Hall requires to be repaired - that the Boys clothing is ragged & worn - that several of the female patients in Hospital wear their own clothes &c

The Clerk to advertise for tenders for repairs of gutter -

Resolved that the Clerk be directed to write to several of the Dublin Commercial Houses to enquire whether they will contract to furnish made up clothing for the inmates of this union Workhouse from materials submitted to and approved by the Board (the substances to be named by the Clerk) the information required at present to apply specially to Boys clothing - That the Clerk be also directed to order from Messrs Todd & Munn 100 yards of chambray - for women's clothing.

Notice of motion

Give notice of motion that will on this day fortnight ~~move~~ that Middy Paddy be removed from the Electoral division of Benoyne and placed on the union at

12

at large she having been originally placed in receipt in error —

Signed  
fartside shea  
Martin Hart  
Ed. Flaxford  
John Murphy

Next Meeting of the Guardians to be held on Wednesday the  
5<sup>th</sup> day of June 1867

(Signed) John Burke  
Clerk of the Union.

Galway County Council Archives

Galway County Council Archives



14 and 15 Vic., c. 68.  
[No. 27.]

MINUTES OF PROCEEDINGS OF THE BOARD OF GUARDIANS OF THE \_\_\_\_\_ UNION,  
on \_\_\_\_\_ day, the \_\_\_\_\_ day of \_\_\_\_\_ 186 \_\_\_\_—continued.

SUPPLEMENTAL SHEET:—MEDICAL CHARITIES ACT, 14 & 15 Vic., cap. 68; and  
NUISANCES REMOVAL AND DISEASES PREVENTION ACTS, 1848 & 1849.

*An Estimate of Medicines, &c., required by the Medical Officer of the \_\_\_\_\_  
Dispensary District, approved by the Committee of Management, was laid before the Board, with a  
Procurement from the Committee for the supply of the same, and Directions were given thereon  
as follows:*

*An Invoice of Medicines forwarded by the Contractor, for the \_\_\_\_\_  
Dispensary District, in pursuance of an Order of the Board in their Minutes of \_\_\_\_\_  
having been received from him, the Clerk laid the Invoice before the Board, and (was directed to  
forward the same, or reported that he had forwarded the same, as the case may be,) to the Medical  
Officer of the District, retaining a Copy of the Invoice for the use of the Guardians.*

*On application of the Committee of Management of the \_\_\_\_\_  
Dispensary District, the following supplies of Books, Stationery, Forms, or other requisites were  
ordered to be supplied:*

Galway County Council Archives

The following Accounts of Expenses, (or Statement of Salaries due as the case may be,) under the Medical Charities Act, were laid before the Board, and Directions were given for Payment thereof (or such other directions as may be given:)

Dispensary District, \_\_\_\_\_  
Account of Mr. \_\_\_\_\_ for \_\_\_\_\_: Amount £

[This at the end of each half-year, in pursuance of Articles 28 and 29 of the General Rules for Dispensary Districts, dated 16th December, 1863.]

An Account of the Expenses incurred for the service of each Dispensary District in the Union, for the half-year ended \_\_\_\_\_ 186\_\_\_\_, having been submitted to the Board, the Clerk was directed to furnish to the Committee of each Dispensary District a statement of all the Expenses of the District which have been included in the half-year's accounts. The following is the total Expense incurred for each Dispensary District for the half-year ended \_\_\_\_\_ 186\_\_\_\_.

|                |           |   |
|----------------|-----------|---|
| _____ District | . . . . . | £ |
| _____ District | . . . . . | £ |

Galway County

[This to be entered on the occasion of every appointment of a new Committee, after the annual Election of Guardians, and on the occasion of any election to fill any vacancies in a Dispensary Committee].

The Board elected the following Rate-payers to be Members of the Committees of Management of the following Dispensary Districts, respectively:—the Clerk to make a Return accordingly to the Poor Law Commissioners, and to issue the prescribed Notification to the Members elected, and to the Medical Officers of the respective Dispensary Districts, in pursuance of Articles 1, 2, and 3 of the General Regulations for Dispensary Districts.—The Clerk was also directed to supply Check Books of Medical Relief Tickets, (Forms E 1 and E 2,) in pursuance of Article 27 of the Dispensary Regulations, to the new Members of the Committees; namely:—

Dispensary District, Mr. \_\_\_\_\_ of \_\_\_\_\_

The following Orders of the Poor Law Commissioners under the Medical Charities Act were laid before the Board and directions given thereon as follows:

Order dated \_\_\_\_\_ (state subject.)

The following Letters on matters arising under the Medical Charities Act or the Nuisances Removal and Diseases Prevention Acts, from the Poor Law Commissioners and others, were read by the Clerk, and directions given to answer them respectively, to the following effect (or Orders were made on them respectively as follows:)

Read Letter from \_\_\_\_\_ dated \_\_\_\_\_ stating that \_\_\_\_\_

*Clifden*

UNION.

Population in 1851—

Present Net Annual Value....£

STATE of the WORKHOUSE for the Week ending Saturday, the 1 day of June 1861

| Number of Inmates for which accommodation is provided. | No. that can be accommodated in each building. | Total No. in each building on the above date. | Able-bodied. |      | Aged and Infirm persons, above 15 years of age, but not working. |      | Boys and Girls above 9 and under 15 years of age. |        | Children above 5 and under 9 years of age. | Children above 2 and under 5 years of age. | Infants under 2 years of age. | RETURN OF SICK AND LUNATICS. |  | OBSERVATIONS.                                   |
|--|--|---|--------------|------|--|------|---|--------|--|--|-------------------------------|------------------------------|--|---|
|  |  |   | Males.       | Fem. | Males.   | Fem. | Boys.   | Girls. |  |  |                               | Total.                       | No. of Lunatics and Idiots in Workhouse on the above date. |   |
| Workhouse.   | 790  | 117   |              |      |  |      |   |        |  |  |                               |                              |  |   |
| Temporary Buildings.                                   |  |   |              |      |  |      |   |        |  |  |                               |                              |  |   |
| Additional Workhouse.                                  |  |   |              |      |  |      |   |        |  |  |                               |                              |  |   |
| Permanent Fever Hospital.                              | 32   | -   |              |      |  |      |   |        |  |  |                               |                              |  |   |
| Fever Sheds.   |  |   |              |      |  |      |   |        |  |  |                               |                              |  |   |
| Total.   | 822  | 117   |              |      |  |      |   |        |  |  |                               |                              |  |   |
| Remaining on previous Saturday, as per last Return,    |  |   | 1            | 22   | 21   | 27   | 4   | 3      | 7  | 11   | 24                            | 120                          | In Work-house Hospital, In Fever Hospital*                 | In separate Wards, In Wards with other inmates, |
| Admitted during the Week,                              |  |   | "            | "    | 1  | 2    | "   | "      | "  | 1  | 1                             | 5                            | Total, .30   | Total, -  |
| TOTAL,   |  |   | 1            | 22   | 22   | 29   | 4   | 3      | 7  | 12   | 25                            | 125                          |  |   |
| Discharged during the Week,                            |  |   | "            | 2    | "  | 1    | "   | "      | "  | 1  | 1                             | 3                            |  |   |
| Died.  |  |   | "            | "    | "  | "    | "   | "      | "  | "  | "                             | "                            |  |   |
| Total Discharged and Dead,                             |  |   | "            | 2    | "  | 1    | "   | "      | 1  | 1  | 3                             | 8                            |  |   |
| REMAINING ON THE ABOVE DATE,                           |  |   | 1            | 20   | 22   | 28   | 4   | 3      | 6  | 11   | 22                            | 117                          |  |   |

RETURN of DESTITUTE PERSONS relieved out of the Workhouse, as by Relief Lists, for the last Week ended Saturday, the \_\_\_\_\_ day of \_\_\_\_\_ authenticated and laid before the Board of Guardians at this Meeting.

| RELIEF DISTRICT. | Destitute Persons relieved out of the Workhouse under 10 Vict. c. 31, s. 1. |   | Destitute Persons relieved out of the Workhouse, but not comprised in Sec. 1. |   | Total relieved out of the Workhouse. |          | RELIEF DISTRICT. | Destitute Persons relieved out of the Workhouse under 10 Vict. c. 31, s. 1. |   | Destitute Persons relieved out of the Workhouse, but not comprised in Sec. 1. |   | Total relieved out of the Workhouse. |          |
|------------------|---|---|---|---|--------------------------------------|----------|------------------|---|---|---|---|--------------------------------------|----------|
|                  | Number of cases relieved.   | Number of Persons, including Applicant and Family, dependent on him or her. | Number of cases relieved.   | Number of Persons, including Applicant and Family, dependent on him or her. | Cases.                               | Persons. |                  | Number of cases relieved.   | Number of Persons, including Applicant and Family, dependent on him or her. | Number of cases relieved.   | Number of Persons, including Applicant and Family, dependent on him or her. | Cases.                               | Persons. |
| No. I.           |   |   |   |   |                                      |          | Bt. forwd.       |   |   |   |   |                                      |          |
| No. II.          |   |   |   |   |                                      |          | No. X.           |   |   |   |   |                                      |          |
| No. III.         |   |   |   |   |                                      |          | No. XI.          |   |   |   |   |                                      |          |
| No. IV.          |   |   |   |   |                                      |          | No. XII.         |   |   |   |   |                                      |          |
| No. V.           |   |   |   |   |                                      |          | No. XIII.        |   |   |   |   |                                      |          |
| No. VI.          |   |   |   |   |                                      |          | No. XIV.         |   |   |   |   |                                      |          |
| No. VII.         |   |   |   |   |                                      |          | No. XV.          |   |   |   |   |                                      |          |
| No. VIII.        |   |   |   |   |                                      |          | No. XVI.         |   |   |   |   |                                      |          |
| No. IX.          |   |   |   |   |                                      |          | No. XVII.        |   |   |   |   |                                      |          |
| Car. forward     |   |   |   |   |                                      |          | TOTAL,           |   |   |   |   |                                      |          |

COPY of MINUTES of Proceedings of the Board of Guardians, at a Meeting held on Wednesday the 5<sup>th</sup> day of June 1861

PRESENT: In the Chair,

*W R Hart Esq V.C.*

Other Guardians:

*Thomas F. Eastwood Esq JP*

*John Geraty Esq*

*W S Wallis "*

*A J Morris "*

*Thomas Hazell "*

The Minutes of last Meeting were read and Signed.

(Signed)

Clerk of the Union





The Clerk's Account of petty Disbursements made by him since last Meeting, amounting to £ 2 - 9 - 11 was produced and passed.

The following Books were exhibited by the Clerk, he having first ascertained the accuracy of the entries made therein by the Master of the Workhouse, and authenticated the same by his signature:

1. The Weekly Relief List and Abstract.
2. The Provision Check Accounts.
3. The Provision Receipt and Consumption Account.

By which it appeared that the Cost of Provisions and Necessaries received during the week was £ 15 - 10 - 10.

£ s. d.

Debit Provision Account, and Credit Invoice Account.

The Cost of Provisions and Necessaries consumed was - - 15 : 10 : 10

Debit Maintenance Account, and Credit Provision Account.

And the general average Cost of an Inmate for the week was - : 2 : 4

Average cost in Infirmary, - - - - : 3 : 7

Average cost in Fever Hospital, - - - - : : :

The Master's estimate of Provisions and Necessaries required for the ensuing week was examined, and Orders were duly made for the several articles specified, namely:

|                 |                   |
|-----------------|-------------------|
| 700 lbs Bread   | 1 lb Pepper       |
| 82 " Meat       | 8 Port Porter     |
| 1 gal Whiskey   | 3 1/2 lbs Candles |
| 600 qts Milk    | 56 " Soap         |
| 2 1/2 lbs Tea   | 7 " Starch        |
| 22 " Meat Sugar | 1 " Rice          |
| 1 " Soap Sugar  |                   |
| 56 " Rice       |                   |
| 8 Sheepheads    |                   |

The following Books were also produced by the Clerk, their accuracy having been previously ascertained by him, and authenticated by his Signature:

1. The several Clothing Accounts.
2. The Medical Officers' Books.

The Out-door Relief Lists and Weekly Receipt and Expenditure Books of the several Relieving Officers were then produced by the Clerk, their accuracy having been previously ascertained by him, and authenticated by his signature.

The Abstract of the Out-door Relief Lists was also produced by the Clerk having been duly entered up by him for the last week ended Saturday, the day of 1866, whereby it appeared that in that week the Total Expenditure in Out-door Relief was

£ s. d.

|          |   |   |   |
|----------|---|---|---|
| In money | - | - | - |
| In kind  | - | - | - |
| Total    | - | - | - |

Credit each Relieving Officer, as per Receipt and Expenditure Book.

The requirements of each Relieving Officer for the ensuing week having been duly considered and estimated by the Board, checks on the Treasurer and orders on Contractors were duly signed and delivered to each of them, of the following amounts and value, respectively:

| RELIEF DISTRICT. | Name of Relieving Officer. | By Check on Treasurer. |       | By Order on Contractors. |                | RELIEF DISTRICT. | Name of Relieving Officer. | By Check on Treasurer. |       | By Order on Contractors. |                |
|------------------|----------------------------|------------------------|-------|--------------------------|----------------|------------------|----------------------------|------------------------|-------|--------------------------|----------------|
|                  |                            | £                      | s. d. | Article and quantity.    | Value. £ s. d. |                  |                            | £                      | s. d. | Article and quantity.    | Value. £ s. d. |
| No. I.           |                            |                        |       |                          |                | Bt. forward      |                            |                        |       |                          |                |
| No. II.          |                            |                        |       |                          |                | No. X.           |                            |                        |       |                          |                |
| No. III.         |                            |                        |       |                          |                | No. XI.          |                            |                        |       |                          |                |
| No. IV.          |                            |                        |       |                          |                | No. XII.         |                            |                        |       |                          |                |
| No. V.           |                            |                        |       |                          |                | No. XIII.        |                            |                        |       |                          |                |
| No. VI.          |                            |                        |       |                          |                | No. XIV.         |                            |                        |       |                          |                |
| No. VII.         |                            |                        |       |                          |                | No. XV.          |                            |                        |       |                          |                |
| No. VIII.        |                            |                        |       |                          |                | No. XVI.         |                            |                        |       |                          |                |
| No. IX.          |                            |                        |       |                          |                | No. XVII.        |                            |                        |       |                          |                |
| Car. forwd.      |                            |                        |       |                          |                | TOTAL.           |                            |                        |       |                          |                |

Credit Treasurer with Checks.

Debit each Relieving Officer with Checks and Orders.

On the Report and recommendation of the Finance Committee the following Bills having been duly examined, and found to be correct, and in accordance with the several Orders, were directed to be paid, and Checks for the several amounts were duly drawn on the Treasurer and Signed, namely:

1. Clothing Account.

£ s. d.

|                            |   |   |   |
|----------------------------|---|---|---|
| 37 Joseph W. Donnell Straw | 3 | 5 | 0 |
|----------------------------|---|---|---|

Debit Clothing Account and Credit Treasurer with the several sums as above.

2. Establishment Account.

|                              |   |    |    |
|------------------------------|---|----|----|
| 39 Francis Miller boarder    | 8 | 19 | 4  |
| 41 John Murke Salary on a/c  | 5 | 0  | 0  |
| 42 Joseph W. Donnell boarder | 8 | 0  | 0  |
| 43 Patrick Reye do           | 5 | 0  | 0  |
| 44 John Murke small a/c      | 2 | 9  | 11 |

Debit Establishment Account and Credit Treasurer with the several sums as above.

3. *Workhouse Invoice Account.*

|    |                | £  | s. | d. |
|----|----------------|----|----|----|
| 34 | J. E. Adamson  | 23 | 12 | 0  |
| 35 | Michael Miller | 14 | 18 | 9  |
| 36 | John King      | 26 | 18 | 1  |
| 38 | John King      | 5  | 14 | 7  |
| 40 | John Joyce     | 16 | 6  | 4  |
| 45 | Patrick Darcy  | 1  | 8  | 0  |

*Debit Workhouse Invoice Account and Credit Treasurer with the several sums as above.*

4. *Out-door Relief Invoice Account.*

| £ | s. | d. |
|---|----|----|
|   |    |    |

*Credit Treasurer and Debit Out-door Relief Invoice Account with the several sums as above.*

*The Clerk's Report of Vaccination was read—(this on the first meeting in every month)—  
Number of successful cases.*

*The Report of the Visiting Committee was read, and Orders were made thereon as follows:*

*The Reports of the Master and other Officers were read and Orders made thereon as follows.*

The Medical officer reports that there was an entire family of 8 persons admitted from Clifden six of them suffering from fever who were at once admitted to Hospital, as there seems a tendency for fever to increase both in Clifden and the Country parts and as there may be many more applicants for admission to Hospital by parties suffering from fever It is necessary to use the utmost precaution to prevent the spread of the disease and to make the necessary preparations for treating such cases as may be admitted. The Medical officer reports that the Hospital is very deficient in bed clothes ticks and clothings of every kind and requests the Board will take immediate steps to procure the necessary supplies without which the Hospital cannot be kept in a clean and wholesome state.



The following Orders of the Poor Law Commissioners were laid before the Board, and directions given thereon as follows:

Required for inmates use —  
 100 yards of grey calico  
 2 white wash brushes  
 2 Sweepings do  
 12 Rugs  
 60 yards of blanket  
 25 do narrow

Ordered \_\_\_\_\_

The following Letters from the Poor Law Commissioners and others were read by the Clerk and directions given to answer them respectively to the following effect for Orders made on them respectively as follows:

Commissioners letter N<sup>o</sup> 7327. Dated 4 June 1861  
 Sanctioning appointment of Miss Reilly  
 as Schoolmistress of Workhouse &c

Read letter from Secretaries of Atlantic Royal  
 Mail Steam Packet Co. forwarding  
 Petition to House of Commons for approval  
 of Board of Guardians. Signed by members  
 present and directed to be forwarded to  
 County representatives

Read letter from W. Concanon Master of Workhouse  
 requesting leave of absence for one week  
 and stating that Miss Reilly Schoolmistress  
 would discharge his duties —

Ordered that W. Concanon get leave asked  
 for leaving Miss Reilly to take charge —

Ordered that the Contractor for turf be  
 allowed the use of a House to put in a  
 supply of turf - that he should keep the key  
 if he thinks proper - and that the turf be  
 supplied and measured from that House  
 or from the Carts as the Contractor wishes  
 for the week's consumption —

Ordered that the Master shall get repaired  
 six wheels and get a few pair of cotton  
 cards - in order to have the cotton now  
 lying in store spun and turned into  
 clothing —

Ordered that the Master shall make an  
 estimate of the difference between the  
 sweep mill and inferior mill at 1/2<sup>d</sup>  
 per quart - from the date which he first  
 kept the accounts separate up to this date  
 and that he write to the mill contractor to  
 make that allowance and that in future  
 no mill but sweep mill be received into  
 the Workhouse —

### Notice of Motion

Take notice that I will on this day  
 fortnight move that all Resolutions af-  
 fecting the Divisions, Districts, appointments  
 and salaries of the officers under the  
 Medical Charities Act - be rescinded and  
 that the Board proceed to readjust the  
 distribution of the Medical officers duties  
 and salaries in accordance with any change  
 in

in the districts, which may be made  
I shall also call attention to the resolutions  
affecting the Treasurership with a view  
of amendment -

Signed  
Thomas J. Gustwood

Ordered that the following articles of  
clothing are condemned and shall  
be taken into the masters store and torn  
up as required -

|                  |                  |
|------------------|------------------|
| 10 Boys trousers | 38 womens shifts |
| 11 " jackets     | 23 " Kerchiefs.  |
| 4 " vests        | 9 " Caps         |
| 19 " Shirts      | 14 " Wrappers    |
| 5 Mens jackets   | 37 " Petticoats  |
| 6 " trousers     | 13 pairs Shifts  |
| 1 " vests        | 20 " Nibs        |
| 19 " Shirts      | 5 " Frocks       |

The cases of provisional relief, and applications for relief were considered and decided on, as set  
forth in the Application and Report Books.

The number of provisional admissions to the Workhouse confirmed was - - -

Ditto disallowed - - - - -

The number of applicants admitted to the Workhouse was - - -

The number of cases of provisional Out-door relief was - - -

Do. do. in which relief was continued by the Guardians - - -

The number of other applicants in the Relieving Officer's Books relieved by order of the  
Guardians was - - - - -

The number of applicants for whom relief was not ordered

The Banns and other securities in force were laid before the Guardians by the Clerk, together  
with his Report thereon, as follows: (this on the second Meeting after the Annual Election in  
every year.)

25 pairs Petticoats - - -

20 sheets

34 Blankets

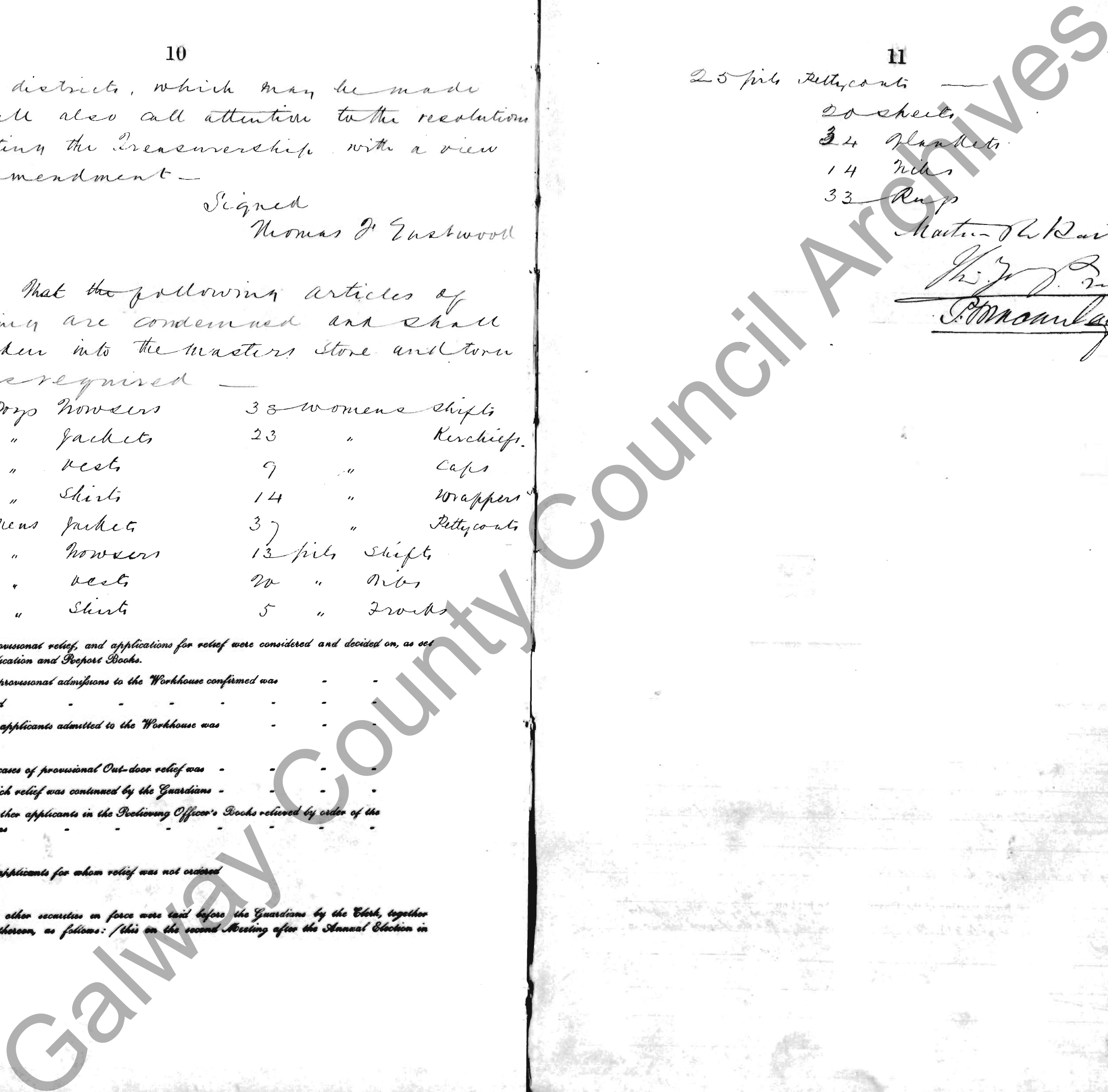
14 Nibs

33 Rugs

Master of the Court

Thos J. Gustwood

J. M. Moulton



Next Meeting of the Guardians to be held on *Wednesday* the  
*15* day of *June* 1861

(Signed) *John Quill*  
Clerk of the Union.

Galway County Council Archives



Galway County Council Archives

14 and 15 Vic., c. 68.  
[No. 27.]

MINUTES of PROCEEDINGS of the BOARD of GUARDIANS of the \_\_\_\_\_ UNION,  
on \_\_\_\_\_ day, the \_\_\_\_\_ day of \_\_\_\_\_ 186 .—continued.

SUPPLEMENTAL SHEET:—MEDICAL CHARITIES ACT, 14 & 15 Vic., cap. 68; and  
NUISANCES REMOVAL AND DISEASES PREVENTION ACTS, 1848 & 1849.

*An Estimate of Medicines, &c., required by the Medical Officer of the \_\_\_\_\_  
Dispensary District, approved by the Committee of Management, was laid before the Board, with a  
Requisition from the Committee for the supply of the same, and Directions were given thereon  
as follows:*

*An Invoice of Medicines forwarded by the Contractor, for the \_\_\_\_\_  
Dispensary District, in pursuance of an Order of the Board in their Minutes of \_\_\_\_\_  
having been received from him, the Clerk laid the Invoice before the Board, and (was directed to  
forward the same, or reported that he had forwarded the same, as the case may be,) to the Medical  
Officer of the District, retaining a Copy of the Invoice for the use of the Guardians.*

*On application of the Committee of Management of the \_\_\_\_\_  
Dispensary District, the following supplies of Books, Stationery, Forms, or other requisites were  
ordered to be supplied:*

The following Accounts of Expenses, (or Statement of Salaries due as the case may be,) under the Medical Charities Act, were laid before the Board, and Directions were given for Payment thereof (or such other directions as may be given:)

Dispensary District \_\_\_\_\_  
Account of Mr. \_\_\_\_\_ for \_\_\_\_\_: Amount £

[This at the end of each half-year, in pursuance of Articles 28 and 29 of the General Rules for Dispensary Districts, dated 16th December, 1853.] An Account of the Expenses incurred for the service of each Dispensary District in the Union, for the half-year ended \_\_\_\_\_ 186, having been submitted to the Board, the Clerk was directed to furnish to the Committee of each Dispensary District a statement of all the Expenses of the District which have been included in the half-year's accounts. The following is the total Expense incurred for each Dispensary District for the half-year ended \_\_\_\_\_ 186.

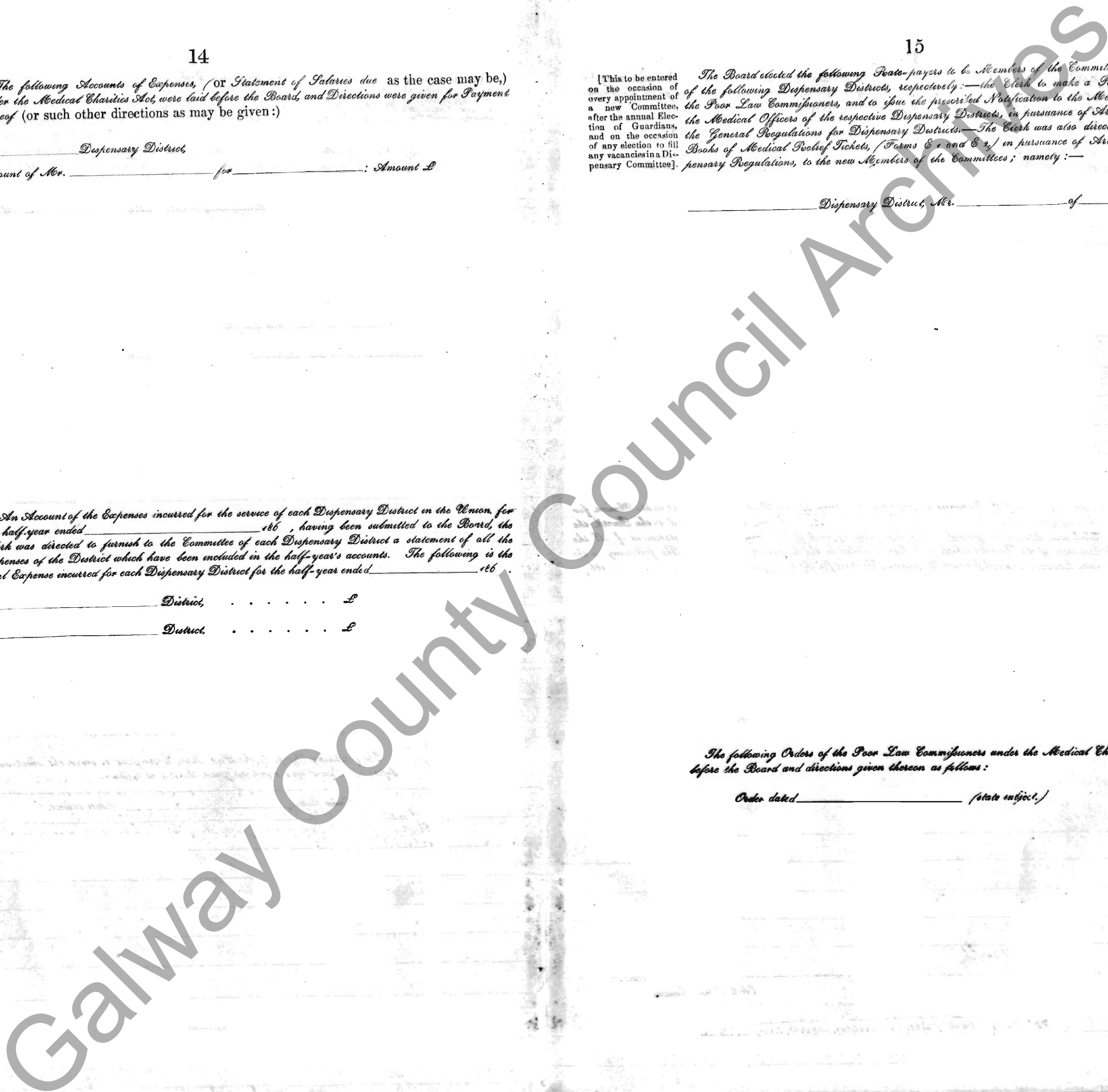
|                |       |   |
|----------------|-------|---|
| _____ District | ..... | £ |
| _____ District | ..... | £ |

[This to be entered on the occasion of every appointment of a new Committee, after the annual Election of Guardians, and on the occasion of any election to fill any vacancies in a Dispensary Committee]. The Board elected the following Rate-payers to be Members of the Committees of Management of the following Dispensary Districts, respectively:—the Clerk to make a Return accordingly to the Poor Law Commissioners, and to issue the prescribed Notification to the Members elected, and to the Medical Officers of the respective Dispensary Districts, in pursuance of Articles 1, 2, and 3 of the General Regulations for Dispensary Districts.—The Clerk was also directed to supply Check Books of Medical Relief Tickets, (Forms E 1 and E 2,) in pursuance of Article 27 of the Dispensary Regulations, to the new Members of the Committees; namely:—

Dispensary District, Mr. \_\_\_\_\_ of \_\_\_\_\_

The following Orders of the Poor Law Commissioners under the Medical Charities Act were laid before the Board and directions given thereon as follows:

Order dated \_\_\_\_\_ (state subject.)





The following Letters on matters arising under the Medical Charities Act or the Nuisances Removal and Diseases Prevention Acts, from the Poor Law Commissioners and others, were read by the Clerk, and directions given to answer them respectively, to the following effect (or Orders were made on them respectively as follows:—)

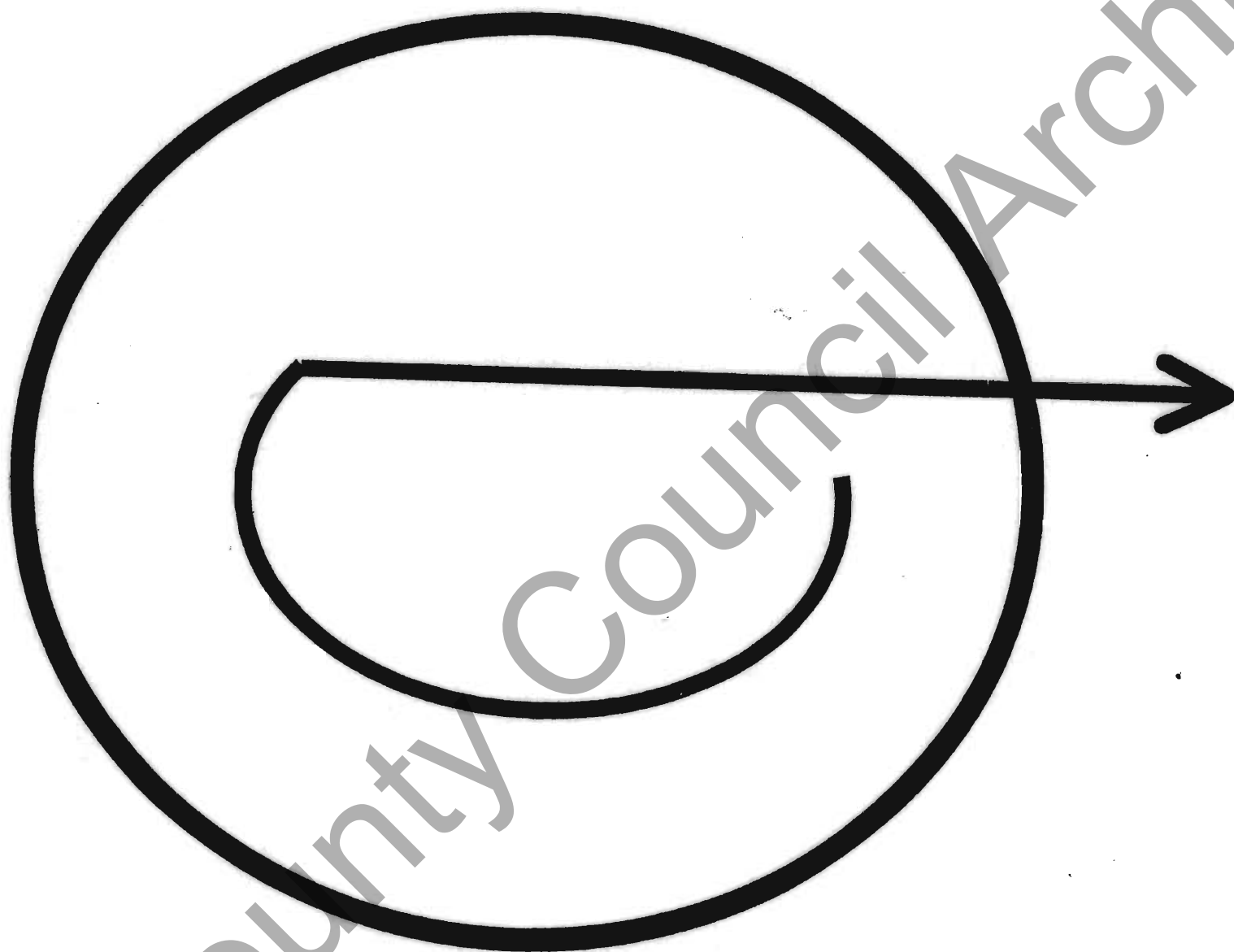
Read Letter from \_\_\_\_\_ dated \_\_\_\_\_ stating that

Lined area for recording the content of letters and directions.

(Signed)

\_\_\_\_\_  
Clerk of the Union.

Galway County Council Archives



**END OF ROLL**

Galway County Council Archives