

Tuam Sewerage Scheme

Sewerage scheme

Manhole Details

Initialed by Nicholas O'Dwyer, Engineer and

Ref. No. IM4

Drawing no. 22

Scale $\frac{1}{2}$

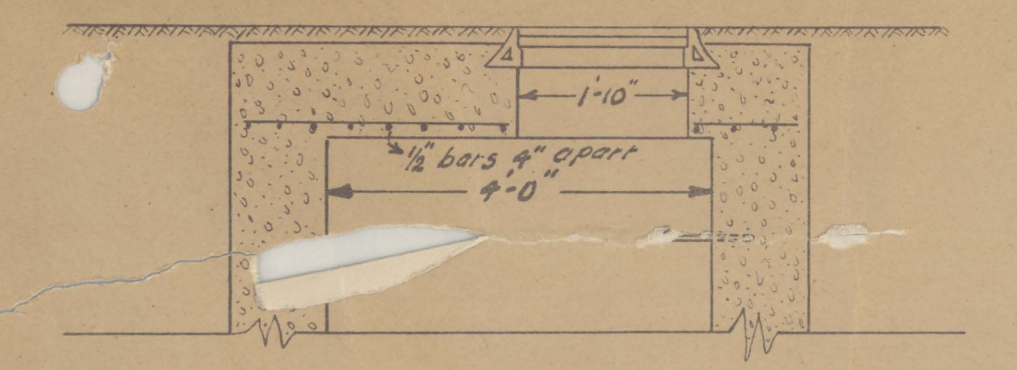
Dated 22 May 1938

(In fair physical condition)

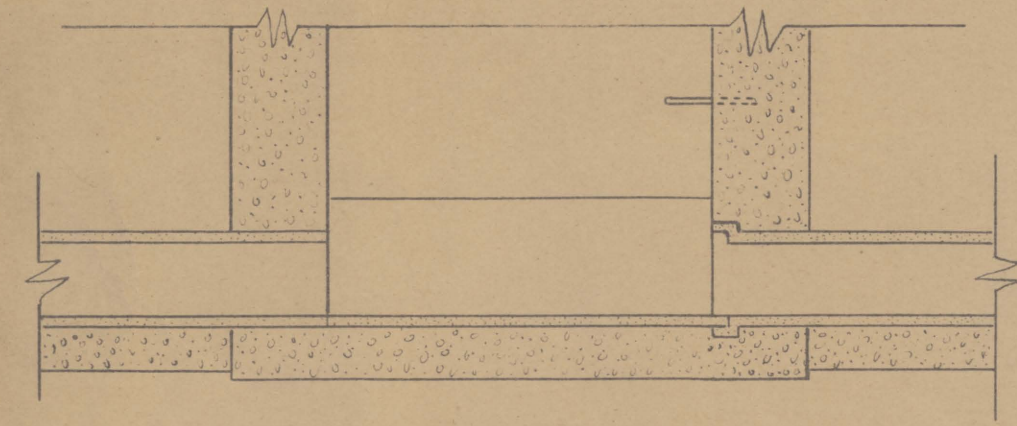
GC/WS/CS/12/001 (9)

SEWERAGE SCHEME MANHOLE DETAILS SCALE - 1/2

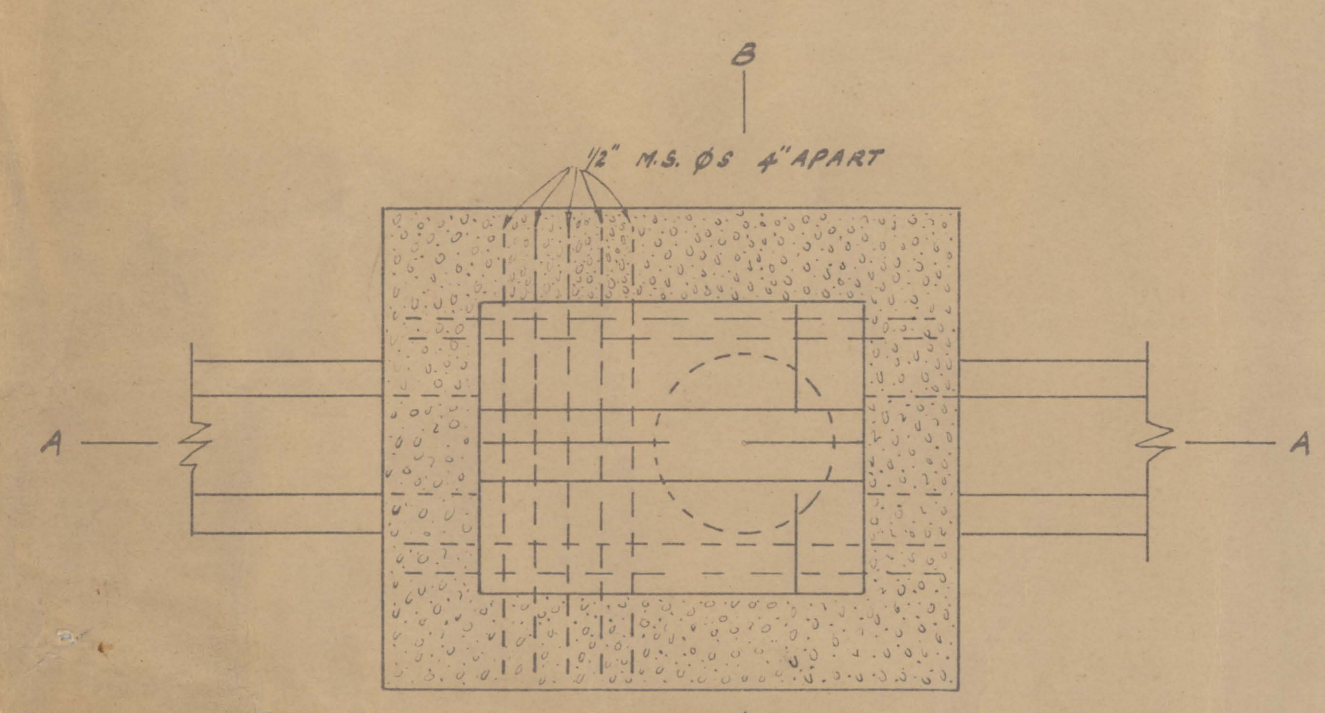
MANHOLE FLOORS 6" THICK
MANHOLE WALLS 12" THICK
MANHOLE ROOFS 12" THICK



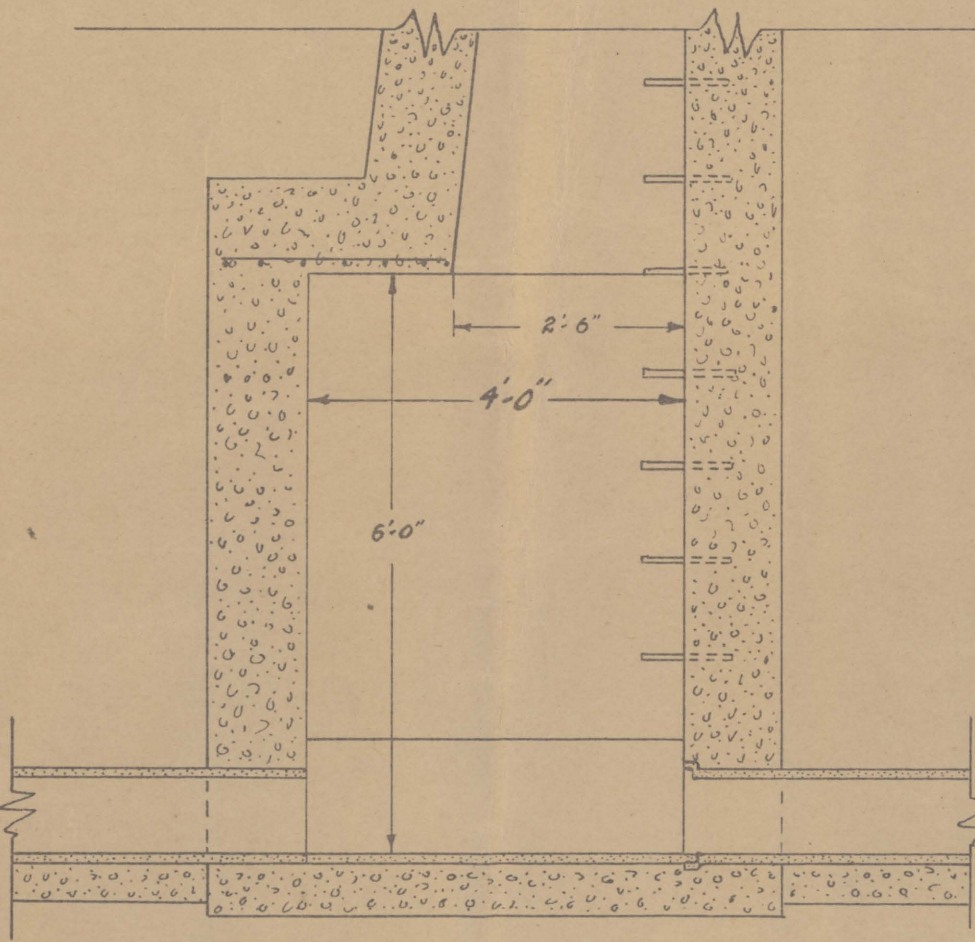
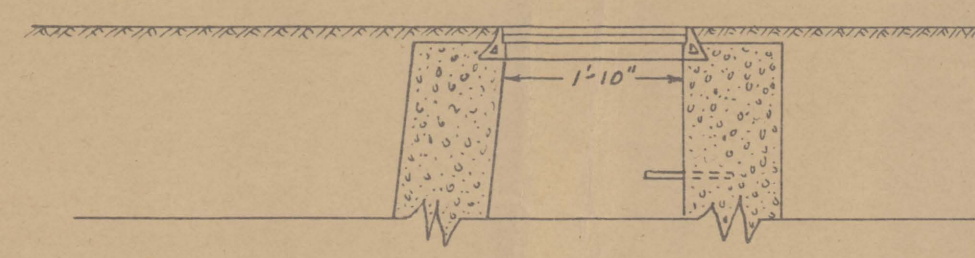
MANHOLES DEEPER THAN 7 FT.



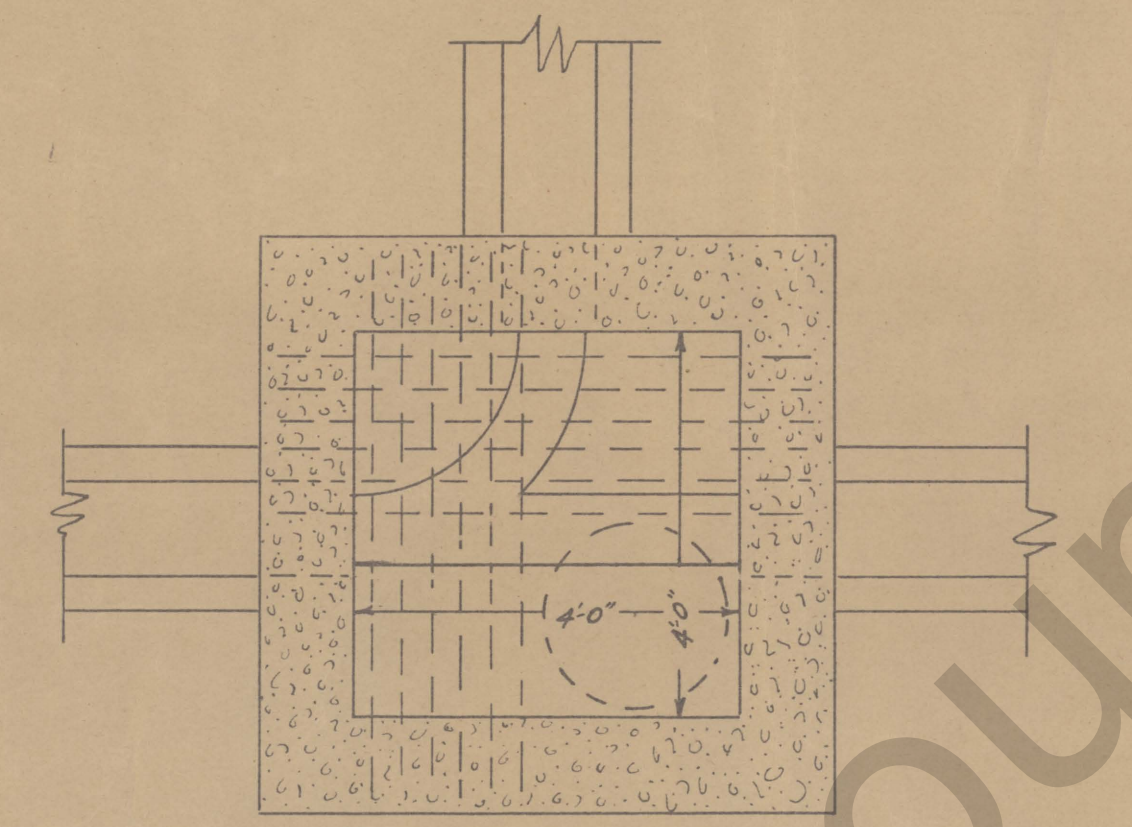
SECTION A-A



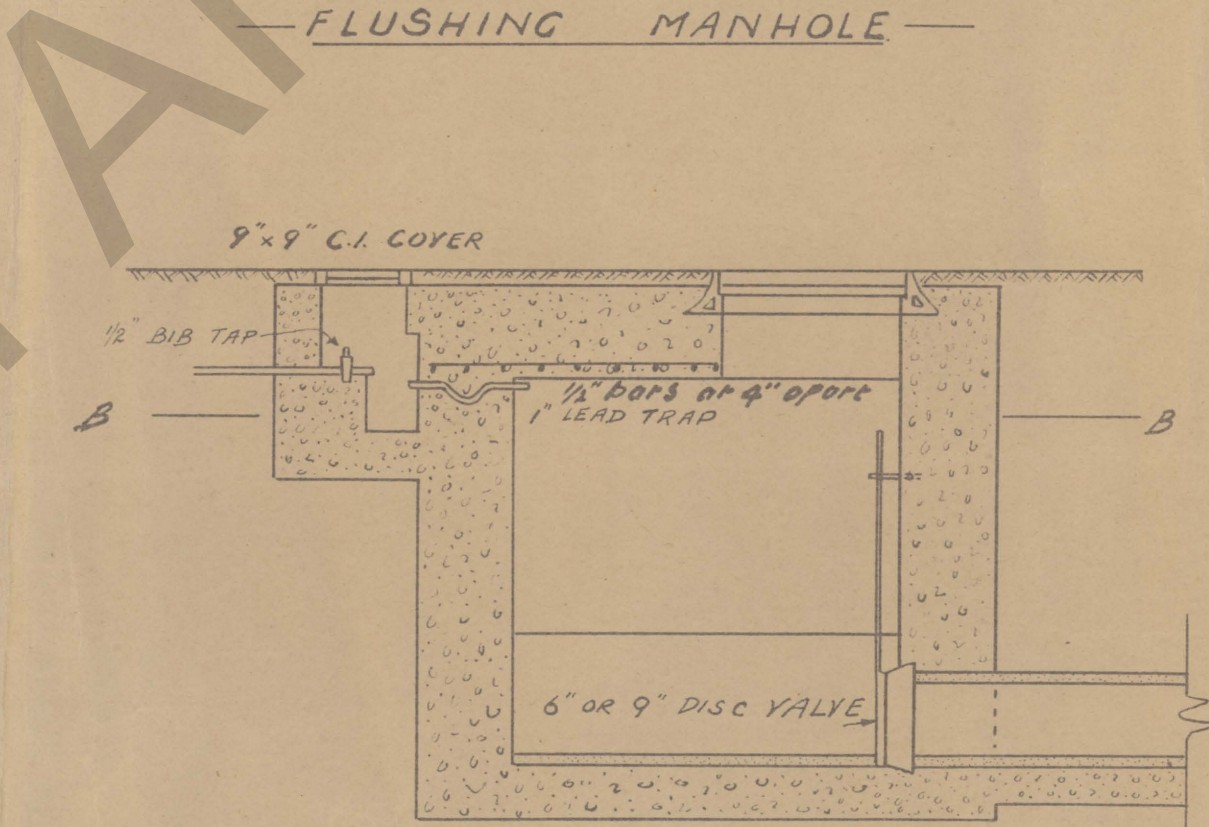
PLAN



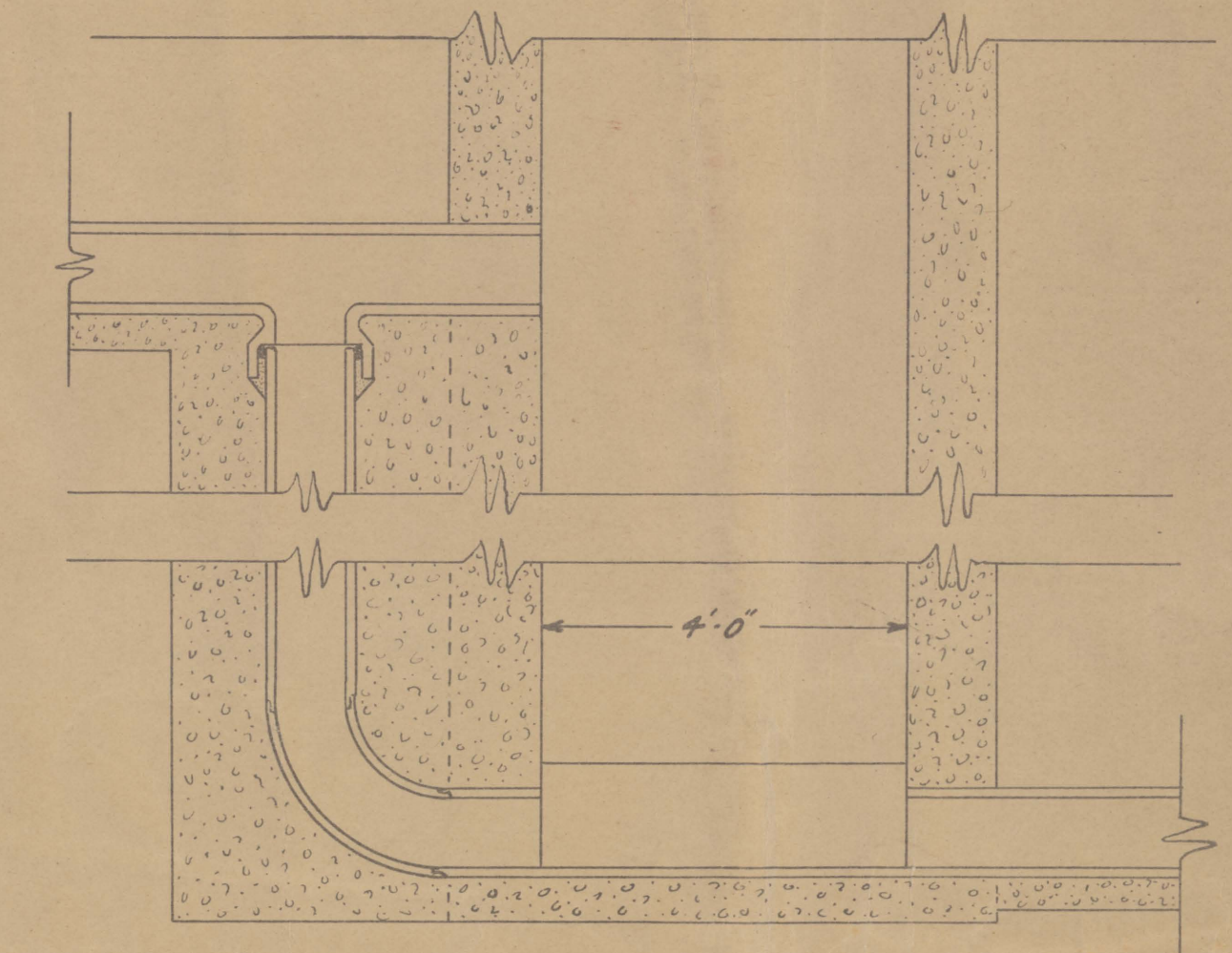
LONGITUDINAL SECTION



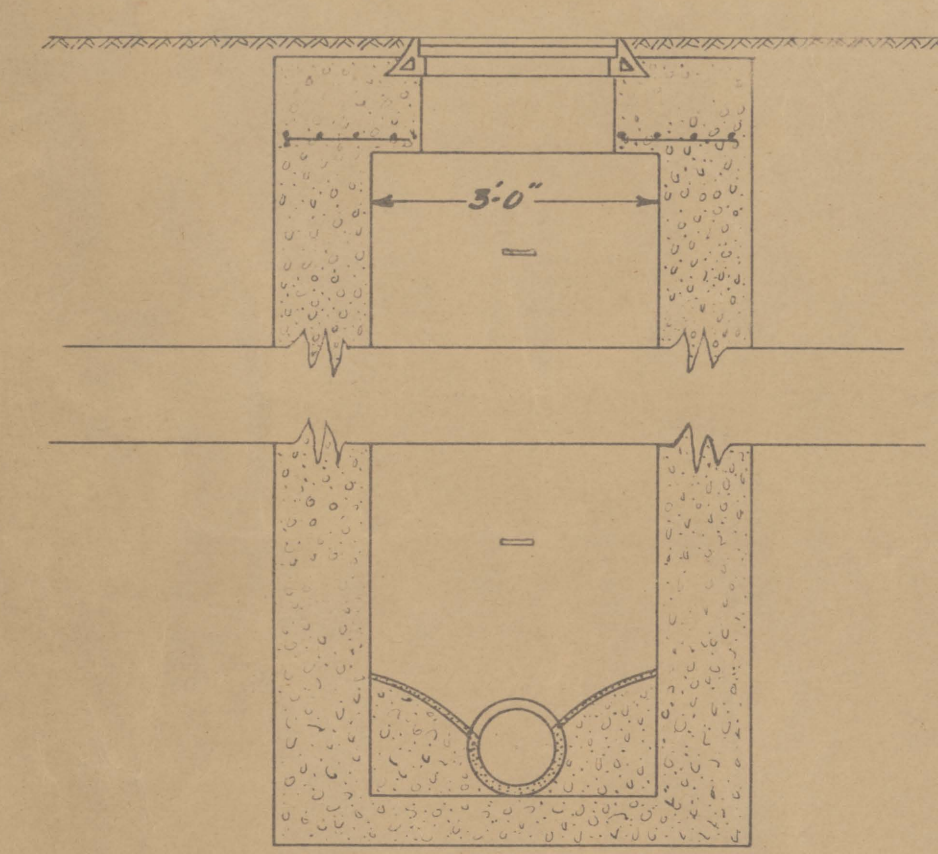
PLAN OF JUNCTION MANHOLE



SECTION A-A

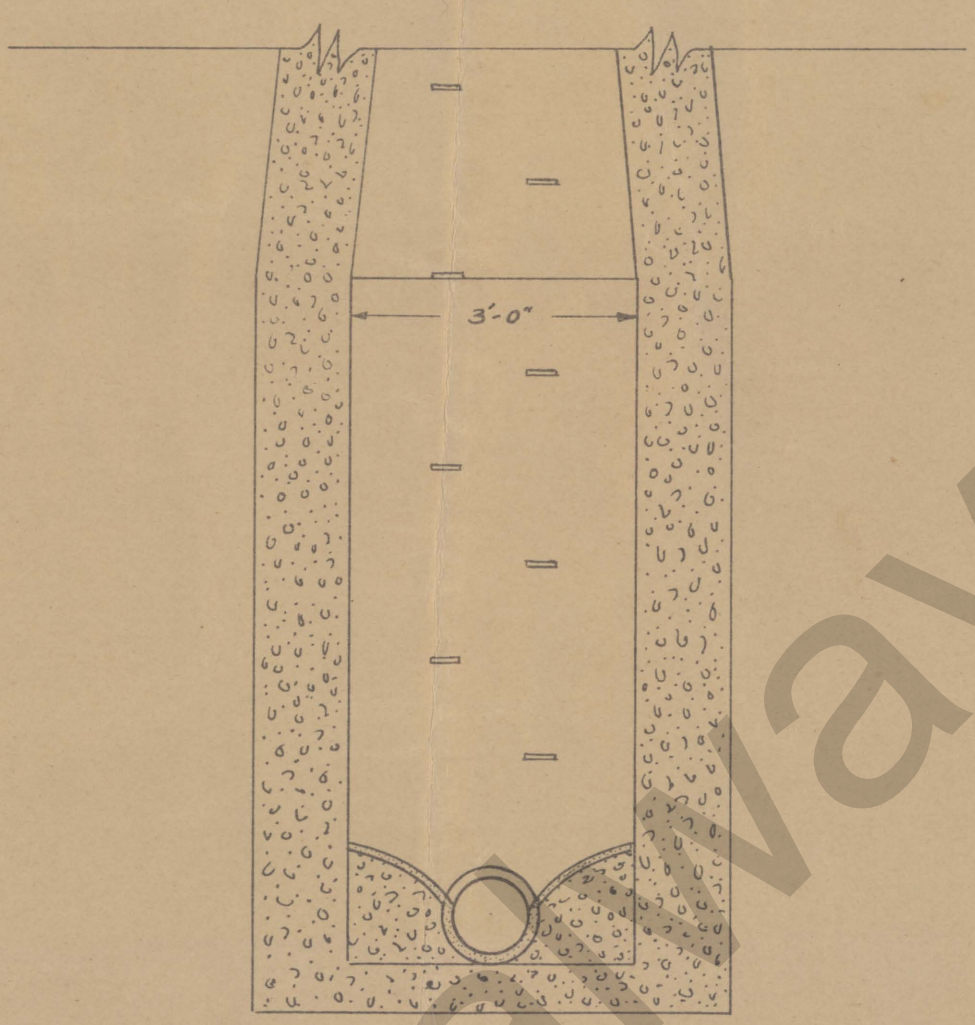
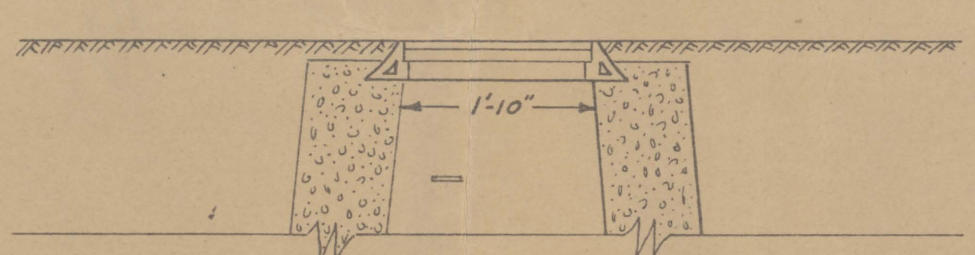


RAMP MANHOLE

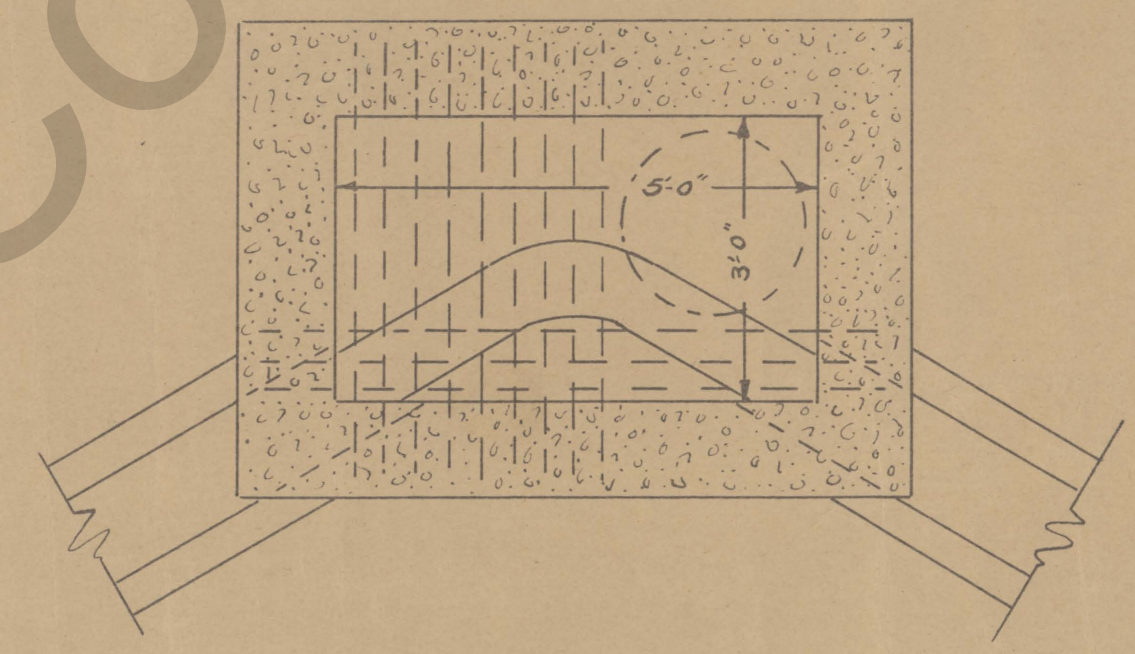


SECTION B-B

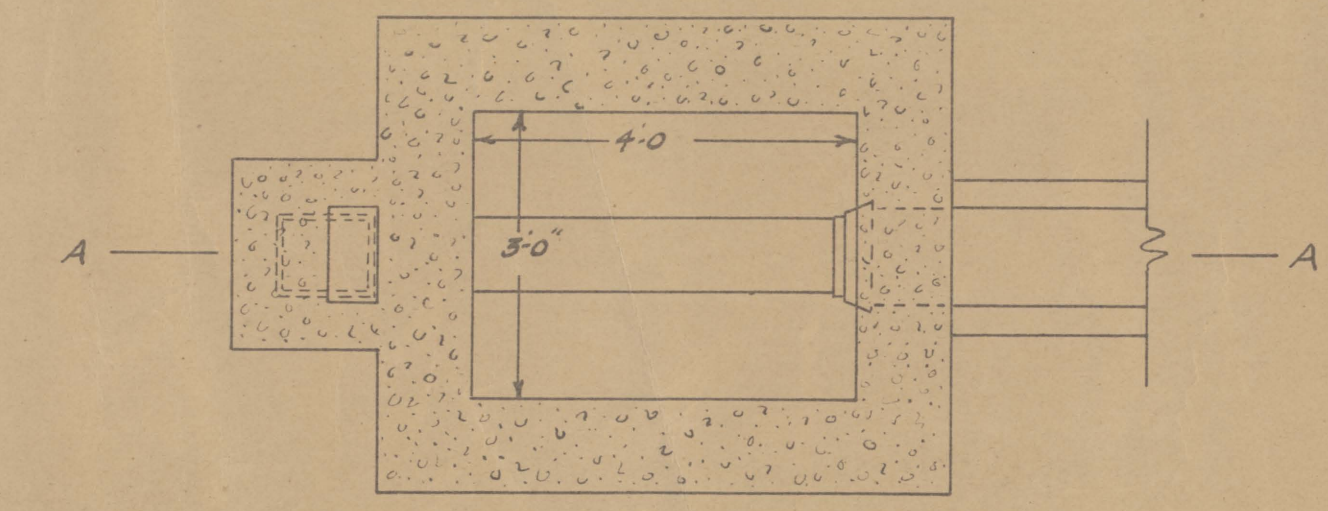
DETAILS OF SHALLOW MANHOLE



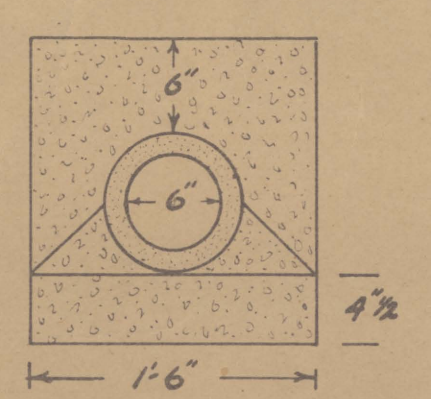
CROSS SECTION



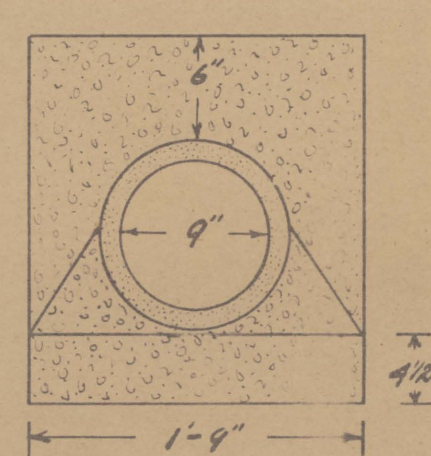
PLAN OF MANHOLE ON BEND



SECTION B-B

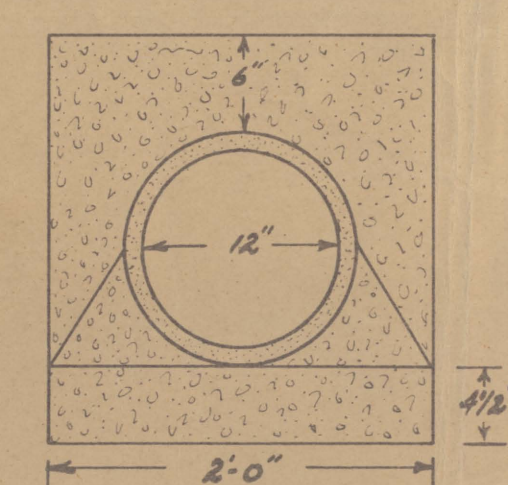


BEDDING AND HAUNCHING	0.088 C.YDS.
EXTRA CONCRETE IN CASING	0.135 "

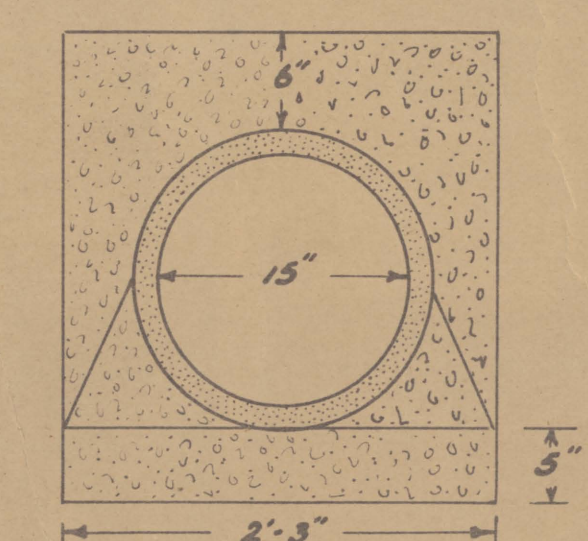


0.105 C.YDS.
0.177 "

C.YDS. OF CONCRETE PER LIN. YD.



0.128 C.YDS.
0.203 "



0.161 C.YDS.
0.245 "