

The following Letters on matters arising under the Medical Charities Act or the Nuisances Removal and Diseases Prevention Acts, from the Poor Law Commissioners and others, were read by the Clerk, and directions given to answer them respectively, to the following effect (or Orders were made on them respectively as follows:—)

Read Letter from _____ dated _____ stating that _____

Galway UNION.

Population in 1861— 20501

Present Net Annual Value, £ 43198. 8. 0

STATE of the WORKHOUSE for the Week ending Saturday, the 24th day of Nov 1866.

Table with columns: Number of inmates for which accommodation is provided, No. that can be accommodated, Able-bodied (Males, Fem.), Aged and infirm persons, Boys and Girls, Children, Infants, RETURN OF SICK AND LUNATICS (Number in Hospital, No. of Lunatics), OBSERVATIONS.

RETURN of DESTITUTE PERSONS relieved out of the Workhouse, as by Relief Lists, for the last Week ended Saturday, the _____ day of _____ 1866, authenticated and laid before the Board of Guardians at this Meeting.

Table with columns: RELIEF DISTRICT, Number of cases relieved, Number of Persons, including Applicant and Family, dependent on him or her, Total relieved out of the Workhouse (Cases, Persons), RELIEF DISTRICT, Number of cases relieved, Number of Persons, including Applicant and Family, dependent on him or her, Total relieved out of the Workhouse (Cases, Persons).

COPY of MINUTES of Proceedings of the Board of Guardians, at a Meeting held on Tuesday the 27 day of November 1866

PRESENT: In the Chair, Honble G S Gough
Other Guardians:—
Wm H Gregory Arthur Alexander Andrew B Nolan
Pat. C Spelman

(Signed)

Clerk of the Union.

The Workhouse Register was produced, examined, and authenticated, from No. 4743 to No. 4751, both inclusive, by the signature of the Chairman, and countersignature of the Clerk.

The Out-door Relief Register was produced, examined, and authenticated from No. _____ to No. _____ inclusive, by the signature of the Chairman and countersignature of the Clerk.

The Clerk's Report on the execution of Orders previously made by the Board was read to the following effect:

The Ledger was produced by the Clerk, posted up to the last day of Meeting, with the proper Debits and Credits, as ordered on that day.

The Treasurer's Book of Receipts and Payments was produced, by which it appeared that there

had been received during the week £ 9 : " : "

paid during the week £ 60 : " : "

And that the Balance on the Account against the Guardians was, £ 223 : 17 : 11

The Book was signed by the Chairman.

The Weekly balance-sheets of the several Collectors were laid before the Board, their accuracy having been first ascertained and authenticated by the Clerk.

The Lodgments made of Rates collected in the several Electoral Divisions appear to have been as follows:—

| Name of each Collector. | Electoral Divisions arranged in Collectors' Districts | Collected and Lodged. | | | Total. | | | Remaining. | | | Total. | | |
|-------------------------|---|-----------------------|----|----|--------|----|----|------------|----|----|--------|----|----|
| | | £ | s. | d. | £ | s. | d. | £ | s. | d. | £ | s. | d. |
| Thos Hardiman | Ardamulligan | | 3 | 5 | | | | | 3 | 5 | | | |
| | Ballycahalaw | 1 | 17 | 11 | | 5 | 8 | | 1 | 12 | 3 | | |
| | Beagh | 2 | 15 | 3 | | | | | 2 | 15 | 3 | | |
| | Burnahon | | 5 | 2 | | 2 | 2 | | | 3 | | | |
| | Cahernore | | 4 | 7 | | 3 | 11 | | | 8 | | | |
| | Cashphard | | 12 | 3 | | | | | | 12 | 3 | | |
| | Downy | 3 | 19 | 1 | | 9 | | | 3 | 18 | 4 | | |
| | Geet | 36 | 3 | 11 | | 8 | 5 | 8 | 27 | 18 | 3 | | |
| | Kilbeacanty | | 4 | | | 4 | | | | | | | |
| | Killinny | | 5 | 1 | | 1 | 7 | | | 3 | 6 | | |
| | Killanton | 2 | 5 | 3 | | | | | 2 | 5 | 3 | | |
| | Killthomas | | 4 | 4 | | | | | | 4 | 4 | | |
| Kinwana | 13 | 16 | 3 | | 2 | 16 | 11 | 10 | 19 | 4 | | | |
| | | 62 | 16 | 6 | | 12 | 8 | | | | 50 | 15 | 10 |
| Michl Taylor | Ardrahan | 1 | 17 | 1 | | | | | 1 | 17 | 1 | | |
| | Castle Taylor | | | 9 | | | 6 | | | 3 | | | |
| | Nahasane | 1 | | 4 | | | | | 1 | 4 | | | |
| | Stehanagh | | 7 | 10 | | | | | 7 | 10 | | | |
| | | 3 | 6 | | | 6 | | | | | 3 | 5 | 6 |
| Myles Staunton | Drumacor | 48 | 4 | 11 | | 1 | 7 | 2 | 46 | 17 | 9 | | |
| | Killeely | 71 | | 1 | | | | | 71 | | 1 | | |
| | Killeenavana | 23 | | 4 | | | 6 | | 22 | 19 | 10 | | |
| | | 142 | 5 | 4 | | 1 | 7 | 8 | | | 140 | 17 | 8 |
| | Total | 208 | 7 | 10 | | 13 | 8 | 10 | | | 194 | 19 | |

NOTE.—A total is to be inserted in Red Ink at the foot of each Collector's District, as well as for the entire Union. Debit the Treasurer and Credit the several Electoral Divisions with the respective amounts lodged.

The Clerk's Account of petty Disbursements made by him since last Meeting, amounting to £ was produced and passed.

The following Books were exhibited by the Clerk, he having first ascertained the accuracy of the entries made therein by the Master of the Workhouse, and authenticated the same by his Signature:

1. The Weekly Relief List and Abstract.
2. The Provision Check Account.
3. The Provision Receipt and Consumption Account.

By which it appeared that the Cost of Provisions and Necessaries received during the week was, £ 19 s. 2 d.

£ s. d.

Debit Provision Account, and Credit Invoice Account.

The Cost of Provisions and Necessaries consumed was 22 : 3 : 7

Debit Maintenance Account, and Credit Provision Account.

And the general average Cost of an Inmate for the week was : 2 : 3

Average Cost in Infirmary, : 2 : 11

Average Cost in Fever Hospital, : 2 : 3

The Master's estimate of Provisions and Necessaries required for the ensuing week was examined, and orders were duly made for the several articles specified, namely:

- 744 lb of Bread
- 70 lb of Meat
- 520 qrs of Milk
- 7 lb of Tea
- 28 lb of Sugar
- 56 lb of Rice
- 1 lb of Pepper
- 2/15 of Whiskey

The following Books were also produced by the Clerk, their accuracy having been previously ascertained by him, and authenticated by his Signature:-

1. The several Clothing Accounts.
2. The Medical Officers' Books.

The Out-door Relief Lists and Weekly Receipt and Expenditure Books of the several Relieving Officers were then produced by the Clerk, their accuracy having been previously ascertained by him, and authenticated by his signature.

The Abstract of the Out-door Relief Lists was also produced by the Clerk, having been duly entered up by him for the last week ended Saturday, the day of 186, whereby it appeared that in that week the Total Expenditure in Out-door Relief was

| | | | |
|-----------|---|----|-----|
| | £ | s. | d. |
| In money, | - | - | - |
| In kind, | - | - | - |
| Total, | - | - | - £ |

Credit each Relieving Officer, as per Receipt and Expenditure Book.

The requirements of each Relieving Officer for the ensuing week having been duly considered and estimated by the Board, Cheques on the Treasurer and Orders on Contractors were duly signed and delivered to each of them, of the following amounts and value, respectively:

| RELIEF DISTRICT. | Name of Relieving Officer. | By Cheque on Treasurer. £ s. d. | By Order on Contractors. | | RELIEF DISTRICT. | Name of Relieving Officer. | By Cheque on Treasurer. £ s. d. | By Order on Contractors. | |
|------------------|----------------------------|---------------------------------|--------------------------|----------------|------------------|----------------------------|---------------------------------|--------------------------|----------------|
| | | | Article and quantity. | Value. £ s. d. | | | | Article and quantity. | Value. £ s. d. |
| No. I. | | | | | Bt. forwd. | | | | |
| No. II. | | | | | No. X. | | | | |
| No. III. | | | | | No. XI. | | | | |
| No. IV. | | | | | No. XII. | | | | |
| No. V. | | | | | No. XIII. | | | | |
| No. VI. | | | | | No. XIV. | | | | |
| No. VII. | | | | | No. XV. | | | | |
| No. VIII. | | | | | No. XVI. | | | | |
| No. IX. | | | | | No. XVII. | | | | |
| Car. forwd. | | | | | Total, | | | | |

Credit Treasurer with Cheques.

Debit each Relieving Officer with Cheques and Orders.

On the Report and recommendation of the Finance Committee the following Bills having been duly examined, and found to be correct, and in accordance with the several Orders, were directed to be paid, and Cheques for the several amounts were duly drawn on the Treasurer and Signed, namely:

1. Clothing Account.

£ s. d.

Debit Clothing Account and Credit Treasurer with the several sums as above.

2. Establishment Account.

Thos Blake balance for Ambulance

9 10

Debit Establishment Account and Credit Treasurer with the several sums as above.

3. Warehouse Invoice Account.

| | £ | s. | d. |
|--|---|----|----|
| | | | |
| | | | |
| | | | |
| | | | |
| | | | |

Debit Warehouse Invoice Account and Credit Treasurer with the several sums as above.

Sundry
4. Out-door Relief Invoice Account.

| | £ | s. | d. |
|--|----------|----|----|
| James Slator for Petty Bills . | 4 | 11 | 11 |
| <i>C^o Treasurer</i> | | | |
| D ^r . Establishment Petty Bills | 4 | 4 | 5 |
| Election & Election expenses | <u>7</u> | 6 | |

Credit Treasurer and Debit Out-door Relief Invoice Account with the several sums as above.

The Clerk's Report of Vaccination was read — (this on the first meeting in every month) —
Number of successful cases.

The Report of the Visiting Committee was read, and Orders were made thereon as follows:

The Reports of the Master and other Officers were read, and Orders made thereon as follows:—

The Master report, the Provisions received all good

The following Orders of the Poor Law Commissioners were laid before the Board, and directions given thereon as follows:

The following Letters from the Poor Law Commissioners and others were read by the Clerk, and directions given to answer them respectively to the following effect (or Orders made on them respectively as follows):

Letter from Poor Law Commissioners No 23,955. 26 November 1866 regarding the Guardians reply to their letter of the 17th instant, respecting the number and dietary of the inmates of the Infirmary wards, and stating that it would be preferable that the Medical officer should prepare a uniform diet for the whole class.

Circular from same No 23,794. 24 November 1866, transmitting a copy of an order in Council dated 14th Inst. in regard to Vessels which may have on board any person affected with Cholera or any body dead of Cholera. —

Galway County Council Archives

The cases of provisional relief, and applications for relief were considered and decided on, as set forth in the Application and Report Books.

The number of Provisional Admissions to the Workhouse confirmed was - 3

Ditto disallowed - - - - -

The number of applicants admitted to the Workhouse was - 9

The number of cases of provisional Out-door relief was - - - - -

Do. do. in which relief was continued by the Guardians - - - - -

The number of other applicants in the Relieving Officer's Books relieved by order of the Guardians was - - - - -

The number of applicants for whom relief was not ordered - - - - -

The Bonds and other securities in force were laid before the Guardians by the Clerk, together with his Report thereon, as follows: (this on the second Meeting after the Annual Election in every year.)

ordered that proceedings be taken against James McTigue for the sum of £10.7.0 expended on his account, to and during his residence in St Marks Ophthalmic Hospital in Dublin at his own request.

The Clerk laid before the Board the following list of arrears of Rates not collectable from unoccupied houses viz

| | |
|--------------------------|------------------|
| Ballycathalan & Division | £ 5.5.8 |
| Bunnahow | 2.2 |
| Cahermore | 3.11 |
| Doonuss | 9 |
| Gort | 8.5.8 |
| Kilbeacanty | 4.0 |
| Killinny | 1.7 |
| Kinvara | 2.16.11 |
| Castle Taylor | 6 |
| Drumacor | 1.7.2 |
| Killeenavara | 6 |
| | <u>£ 18.8.10</u> |

Resolved that the above being irrecoverable rates be canceled.

J. H. rough

14 and 15 Vic., c. 68,
(No. 27.)

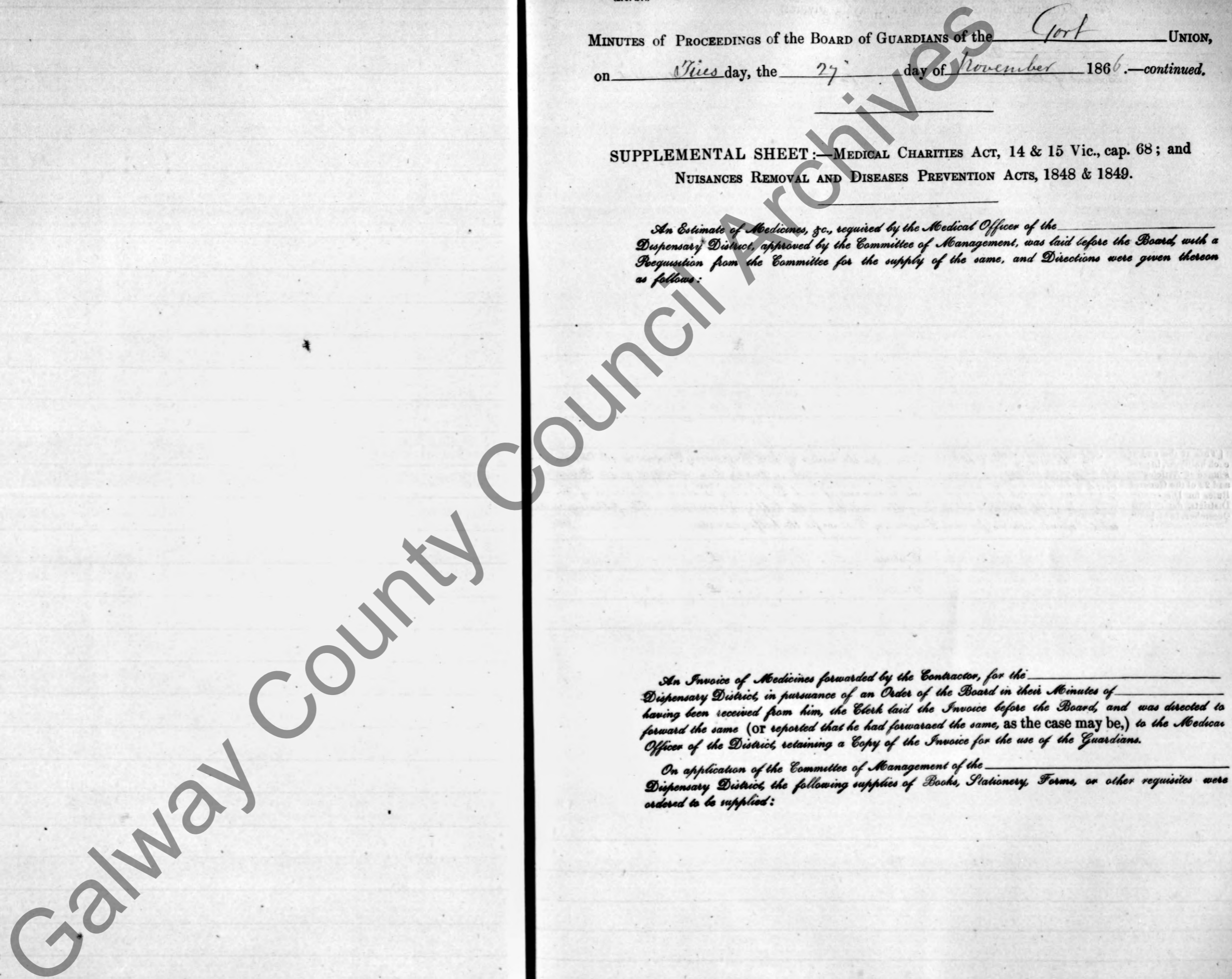
MINUTES of PROCEEDINGS of the BOARD of GUARDIANS of the Co. K UNION,
on Thurs day, the 27 day of November 1866.—continued.

SUPPLEMENTAL SHEET:—MEDICAL CHARITIES ACT, 14 & 15 Vic., cap. 68; and
NUISANCES REMOVAL AND DISEASES PREVENTION ACTS, 1848 & 1849.

*An Estimate of Medicines, &c., required by the Medical Officer of the _____
Dispensary District, approved by the Committee of Management, was laid before the Board, with a
Procuration from the Committee for the supply of the same, and Directions were given thereon
as follows:*

*An Invoice of Medicines forwarded by the Contractor, for the _____
Dispensary District, in pursuance of an Order of the Board in their Minutes of _____
having been received from him, the Clerk laid the Invoice before the Board, and was directed to
forward the same (or reported that he had forwarded the same, as the case may be,) to the Medical
Officer of the District, retaining a Copy of the Invoice for the use of the Guardians.*

*On application of the Committee of Management of the _____
Dispensary District, the following supplies of Books, Stationery, Forms, or other requisites were
ordered to be supplied:*



The following Letters on matters arising under the Medical Charities Act or the Nuisances Removal and Diseases Prevention Acts, from the Poor Law Commissioners and others, were read by the Clerk, and directions given to answer them respectively, to the following effect (or Orders were made on them respectively as follows:)

Read Letter from Poor Law Commissioners dated 23 November 1866 stating that

Dr. Roughean has been placed in charge of the Dispensary District, in this Union as Medical Inspector instead of Dr. King

Galway County

(Signed)

Clerk of the Union.

UNION.

Population in 1861—20501

Present Net Annual Value, £13184.15.0

STATE of the WORKHOUSE for the Week ending Saturday, the 1st day of December 1866.

Table with columns for Accommodation, Able-bodied, Aged and infirm persons, Boys and Girls, Children, Infants, and RETURN OF SICK AND LUNATICS. Includes rows for Workhouse, Temporary Buildings, Additional Workhouse, Permanent Fever Hospital, Fever Sheds, and totals for Admitted, Discharged, and Remaining.

RETURN of DESTITUTE PERSONS relieved out of the Workhouse, as by Relief Lists, for the last Week ended Saturday, the ... day of ... 186, authenticated and laid before the Board of Guardians at this Meeting.

Table with columns for RELIEF DISTRICT, Destitute Persons relieved out of the Workhouse, and Total relieved out of the Workhouse. Includes rows for No. I to No. XVII and a Car. forwd. row.

COPY of MINUTES of Proceedings of the Board of Guardians, at a Meeting held on the ... day of ... 186.

PRESENT: In the Chair, Other Guardians:—

No meeting Tuesday 4 December 1866 only two Guardians attended

The Minutes of last Meeting were read and Signed.

The Workhouse Register was produced, examined, and authenticated, from No. _____ to No. _____, both inclusive, by the signature of the Chairman, and countersignature of the Clerk.

The Out-door Relief Register was produced, examined, and authenticated from No. _____ to No. _____ inclusive, by the signature of the Chairman and countersignature of the Clerk.

The Clerk's Report on the execution of Orders previously made by the Board was read to the following effect:

The Ledger was produced by the Clerk, posted up to the last day of Meeting, with the proper Debits and Credits, as ordered on that day.

The Treasurer's Book of Receipts and Payments was produced, by which it appeared that those had been received during the week £ : :

Baid during the week £ : :

And that the Balance on the Account the Guardians was, £ : :

The Book was signed by the Chairman.

The Weekly balance-sheets of the several Collectors were laid before the Board, their accuracy having been first ascertained and authenticated by the Clerk.

The Lodgments made of Rates collected in the several Electoral Divisions appear to have been as follows:—

| Name of each Collector. | Electoral Divisions arranged in Collectors' Districts | Collected and Lodged. | | | Total. | | | Remaining. | | | Total. | | |
|--------------------------|---|-----------------------|----|-----|--------|----|----|------------|----|-----|--------|----|----|
| | | £ | s. | d. | £ | s. | d. | £ | s. | d. | £ | s. | d. |
| Thos Hardiman | Ardanullivan | 3 | 5 | | 129 | 3 | 2 | 129 | 6 | 7 | | | |
| | Ballycahalan | 1 | 12 | 3 | 105 | 15 | 8 | 107 | 7 | 11 | | | |
| | Beagh | 2 | 15 | 3 | 140 | 15 | 4 | 143 | 10 | 7 | | | |
| | Bunmahow | | 3 | | 47 | 6 | 8 | 47 | 9 | 8 | | | |
| | Cahernore | | | 8 | 139 | 2 | 1 | 139 | 2 | 9 | | | |
| | Cappard | | 12 | 3 | 44 | 7 | 3 | 44 | 19 | 6 | | | |
| | Doorus | 3 | 18 | 4 | 127 | 15 | 3 | 131 | 13 | 7 | | | |
| | Govt | 27 | 18 | 3 | 438 | 16 | 8 | 466 | 14 | 11 | | | |
| | Kilbeacanty | | | | 60 | 7 | 1 | 60 | 7 | 1 | | | |
| | Killenny | | | 6 | 59 | 4 | 3 | 59 | 7 | 9 | | | |
| | Kiltaston | 2 | 5 | 3 | 178 | 8 | 4 | 180 | 13 | 7 | | | |
| | Kilthomas | | 4 | 4 | 54 | 13 | 10 | 58 | | 2 | | | |
| | Minwara | 10 | 19 | 4 | 224 | | 5 | 234 | 19 | 9 | | | |
| | | 50 | 15 | 10 | 1779 | 18 | | | 10 | | 1530 | 13 | 10 |
| Mich ^r Taylor | Ardrahan | 1 | 17 | 1 | 60 | 6 | 9 | 62 | 3 | 10 | | | |
| | Castle Taylor | | | 3 | 65 | 14 | | 65 | 14 | 3 | | | |
| | Drumacor | 14 | 11 | 1 | 156 | 2 | 5 | 170 | 13 | 6 | | | |
| | Killesly | 22 | 18 | 5 | 63 | 1 | 1 | 85 | 19 | 6 | | | |
| | Killeenavara | 8 | 4 | 1 | 81 | 8 | 10 | 89 | 12 | 11 | | | |
| | Rahasane | 1 | | 4 | 78 | 2 | 4 | 79 | 2 | 8 | | | |
| | Stehanagh | | 7 | 10 | 108 | 14 | 1 | 109 | 1 | 11 | | | |
| | 48 | 19 | 1 | 613 | 9 | 6 | | | | 662 | 8 | 7 | |
| Myle, Staunton | late collector | 95 | 4 | 1 | | | | 95 | 4 | 1 | | | |
| | Total | 95 | 4 | 1 | | | | | | | 95 | 4 | 1 |
| | | 194 | 19 | | 2393 | 7 | 6 | | | | 2588 | 6 | 6 |

NOTE.—A total is to be inserted in Red Ink at the foot of each Collector's District, as well as for the entire Union.

Debit the Treasurer and Credit the several Electoral Divisions with the respective amounts lodged.

The Clerk's Account of petty Disbursements made by him since last Meeting, amounting to £ was produced and passed.

The following Books were exhibited by the Clerk, he having first ascertained the accuracy of the entries made therein by the Master of the Workhouse, and authenticated the same by his Signature:

1. The Weekly Relief List and Abstract.
2. The Provision Check Account.
3. The Provision Receipt and Consumption Account.

By which it appeared that the Cost of Provisions and Necessaries received during the week was, £ 18 . 12 s . 8 d.

Debit Provision Account, and Credit Invoice Account. £ s. d.

The Cost of Provisions and Necessaries consumed was 22 : . : 1

Debit Maintenance Account, and Credit Provision Account.

And the general average Cost of an Inmate for the week was : 2 : 3

Average Cost in Infirmary, : 2 : 10

Average Cost in Fever Hospital, : 2 : 11

The Master's estimate of Provisions and Necessaries required for the ensuing week was examined, and orders were duly made for the several articles specified, namely:



The following Books were also produced by the Clerk, their accuracy having been previously ascertained by him, and authenticated by his Signature:—

1. The several Clothing Accounts.
2. The Medical Officers' Books.

The Out-door Relief Lists and Weekly Receipt and Expenditure Books of the several Relieving Officers were then produced by the Clerk, their accuracy having been previously ascertained by him, and authenticated by his signature.

The Abstract of the Out-door Relief Lists was also produced by the Clerk, having been duly entered up by him for the last week ended Saturday, the day of 186 , whereby it appeared that in that week the Total Expenditure in Out-door Relief was

| | | | | | | | |
|-----------|---|---|---|---|---|----|----|
| In money, | - | - | - | - | £ | s. | d. |
| In kind, | - | - | - | - | | | |
| Total, | - | - | - | - | £ | | |

Credit each Relieving Officer, as per Receipt and Expenditure Book.

The requirements of each Relieving Officer for the ensuing week having been duly considered and estimated by the Board, Cheques on the Treasurer and Orders on Contractors were duly signed and delivered to each of them, of the following amounts and value, respectively:

| RELIEF DISTRICT. | Name of Relieving Officer. | By Cheque on Treasurer. | | By Order on Contractors. | | RELIEF DISTRICT. | Name of Relieving Officer. | By Cheque on Treasurer. | | By Order on Contractors. | |
|------------------|----------------------------|-------------------------|-------|--------------------------|----------------|------------------|----------------------------|-------------------------|-------|--------------------------|----------------|
| | | £ | s. d. | Article and quantity. | Value. £ s. d. | | | £ | s. d. | Article and quantity. | Value. £ s. d. |
| No. I. | | | | | | Bt. forwd. | | | | | |
| No. II. | | | | | | No. X. | | | | | |
| No. III. | | | | | | No. XI. | | | | | |
| No. IV. | | | | | | No. XII. | | | | | |
| No. V. | | | | | | No. XIII. | | | | | |
| No. VI. | | | | | | No. XIV. | | | | | |
| No. VII. | | | | | | No. XV. | | | | | |
| No. VIII. | | | | | | No. XVI. | | | | | |
| No. IX. | | | | | | No. XVII. | | | | | |
| Car. forwd. | | | | | | Total, | | | | | |

Credit Treasurer with Cheques.

Debit each Relieving Officer with Cheques and Orders.

On the Report and recommendation of the Finance Committee the following Bills having been duly examined, and found to be correct, and in accordance with the several Orders, were directed to be paid, and Cheques for the several amounts were duly drawn on the Treasurer and Signed, namely:

1. Clothing Account. £ s. d.

| | | |
|--|--|--|
| | | |
|--|--|--|

Debit Clothing Account and Credit Treasurer with the several sums as above.

2. Establishment Account.

| | | |
|--|--|--|
| | | |
|--|--|--|

Debit Establishment Account and Credit Treasurer with the several sums as above.

The following Letters on matters arising under the Medical Charities Act or the Nuisances Removal and Diseases Prevention Acts, from the Poor Law Commissioners and others, were read by the Clerk, and directions given to answer them respectively, to the following effect (or Orders were made on them respectively as follows:)

Read Letter from _____ dated _____ stating that _____

Gort UNION.

Population in 1861— 20,501

Present Net Annual Value, £43184.15.0

STATE of the WORKHOUSE for the Week ending Saturday, the 8th day of Dec^r. 1866.

| Number of inmates for which accommodation is provided. | No. that can be accommodated in each building on the above date. | Able-bodied. | | Aged and infirm persons, and adult persons, above 15 years of age, but not working. | | Boys and Girls above 9 and under 15 years of age. | | Children above 8 and under 9 years of age. | Children above 8 and under 7 years of age. | Infants under 2 years of age. | Total. | RETURN OF SICK AND LUNATICS. | | OBSERVATIONS. | |
|--|--|--------------|-----------|---|----------|---|-----------|--|--|-------------------------------|--------|---------------------------------------|---|--|--|
| | | Males. | Fem. | Males. | Fem. | Boys. | Girls. | | | | | Number in Hospital on the above date. | No. of Lunatics and Idiots in Workhouse on the above date. | | |
| Workhouse, | 729 | 124 | | | | | | | | | | | | | |
| Temporary Buildings, | | | | | | | | | | | | | | | |
| Permanent Fever Hospital, | 57 | 10 | | | | | | | | | | | | | |
| Fever Sheds, | | | | | | | | | | | | | | | |
| Total, | 780 | 134 | | | | | | | | | | | | | |
| Remainng on previous Saturday, as per last Return, | | | 6 | 40 | 13 | 16 | 2 | 2 | 17 | 22 | 27 | 145 | In Workhouse Hospital, } 56 In Fever Hospital, } 10 Total, } 66 | In separate Wards, } In Wards with other inmates, } 2 Total, } 2 | |
| Admitted during the Week, | | | 1 | 2 | | | | | | | | 3 | | | |
| TOTAL, | 7 | 42 | 13 | 16 | 2 | 2 | 17 | 22 | 27 | 148 | | | | | |
| Discharged during the Week, | | | 3 | 2 | | | 2 | 1 | 2 | 1 | 1 | 12 | | | |
| Died, | | | | | | 2 | | | | | | 2 | | | |
| Total Discharged and Dead, | | | 3 | 2 | | 2 | 2 | 1 | 2 | 1 | 1 | 14 | | | |
| REMAINING ON THE ABOVE DATE, | | | 4 | 40 | 13 | 14 | 1 | 15 | 21 | 26 | 134 | | | | |

RETURN of DESTITUTE PERSONS relieved out of the Workhouse, as by Relief Lists, for the last Week ended Saturday, the _____ day of _____ 1866, authenticated and laid before the Board of Guardians at this Meeting.

| RELIEF DISTRICT. | Destitute Persons relieved out of the Workhouse under 10 Vict. c. 31, s. 1. | | Destitute Persons relieved out of the Workhouse, but not comprised in Sec. 1. | | Total relieved out of the Workhouse. | | RELIEF DISTRICT. | Destitute Persons relieved out of the Workhouse under 10 Vict. c. 31, s. 1. | | Destitute Persons relieved out of the Workhouse, but not comprised in Sec. 1. | | Total relieved out of the Workhouse. | |
|------------------|---|---|---|---|--------------------------------------|----------|------------------|---|---|---|---|--------------------------------------|----------|
| | Number of cases relieved. | Number of Persons, including Applicant and Family, dependent on him or her. | Number of cases relieved. | Number of Persons, including Applicant and Family, dependent on him or her. | Cases. | Persons. | | Number of cases relieved. | Number of Persons, including Applicant and Family, dependent on him or her. | Number of cases relieved. | Number of Persons, including Applicant and Family, dependent on him or her. | Cases. | Persons. |
| No. I. | | | | | | | Bt. forwd. | | | | | | |
| No. II. | | | | | | | No. X. | | | | | | |
| No. III. | | | | | | | No. XI. | | | | | | |
| No. IV. | | | | | | | No. XII. | | | | | | |
| No. V. | | | | | | | No. XIII. | | | | | | |
| No. VI. | | | | | | | No. XIV. | | | | | | |
| No. VII. | | | | | | | No. XV. | | | | | | |
| No. VIII. | | | | | | | No. XVI. | | | | | | |
| No. IX. | | | | | | | No. XVII. | | | | | | |
| Car. forwd. | | | | | | | TOTAL - | | | | | | |

COPY of MINUTES of Proceedings of the Board of Guardians, at a Meeting held on Tuesday the 11th day of December 1866.

PRESENT: In the Chair, *Honble G S Gough*
Other Guardians:—

Nedn Burke Arthur Alexander Pat^r C. Spelman

(Signed,)

Cloth of the Union.

The Minutes of last Meeting were read and Signed.

The Workhouse Register was produced, examined, and authenticated, from No. 4757 to No. 4771, both inclusive, by the signature of the Chairman, and countersignature of the Clerk.

The Out-door Relief Register was produced, examined, and authenticated from No. _____ to No. _____ inclusive, by the signature of the Chairman and countersignature of the Clerk.

The Clerk's Report on the execution of Orders previously made by the Board was read to the following effect:

The Ledger was produced by the Clerk, posted up to the last day of Meeting, with the proper Debits and Credits, as ordered on that day.

The Treasurer's Book of Receipts and Payments was produced, by which it appeared that there had been received during the week £ 196 : 7 : 9

Paid during the week £ 135 : 19 : 10

And that the Balance on the Account against the Guardians was, £ 178 : 10 : .

The Book was signed by the Chairman.

The Weekly balance-sheets of the several Collectors were laid before the Board, their accuracy having been first ascertained and authenticated by the Clerk.

The Lodgments made of Rates collected in the several Electoral Divisions appear to have been as follows:—

| Name of each Collector. | Electoral Divisions arranged in Collectors' Districts. | Collected and Lodged. | | | Total. | | | Remaining. | | | Total. | | |
|--------------------------|--|-----------------------|----|----|--------|----|----|------------|----|----|--------|----|----|
| | | £ | s. | d. | £ | s. | d. | £ | s. | d. | £ | s. | d. |
| Mr ^s Hardiman | Ardamullivan | 17 | 2 | 10 | | | | 112 | 3 | 9 | | | |
| | Ballycahalan | 22 | . | 4 | | | | 85 | 7 | 7 | | | |
| | Beagh | 15 | 4 | 3 | | | | 128 | 6 | 4 | | | |
| | Bunmahon | 3 | 11 | 9 | | | | 43 | 17 | 11 | | | |
| | Cahernore | 28 | 13 | 8 | | | | 110 | 9 | 1 | | | |
| | Cappard | 4 | 8 | 9 | | | | 40 | 10 | 9 | | | |
| | Dorru | 5 | 2 | 6 | | | | 126 | 11 | 1 | | | |
| | Gort | 66 | 18 | 5 | | | | 399 | 16 | 6 | | | |
| | Kilbeganty | . | 4 | 5 | | | | 60 | 2 | 8 | | | |
| | Killenny | . | . | . | | | | 89 | 7 | 9 | | | |
| | Killanton | . | . | . | | | | 180 | 13 | 7 | | | |
| | Killthomas | . | . | . | | | | 55 | . | 2 | | | |
| | Kinwara | . | . | . | | | | 234 | 19 | 9 | | | |
| | | | | | 163 | 6 | 11 | | | | 1667 | 6 | 11 |
| Mich ^l Taylor | Ardrahan | . | . | . | | | | 62 | 3 | 10 | | | |
| | Castle Taylor | . | . | . | | | | 65 | 14 | 3 | | | |
| | Drumacoo | 12 | 18 | 3 | | | | 157 | 15 | 3 | | | |
| | Killeely | 6 | 14 | . | | | | 79 | 5 | 6 | | | |
| | Killeenavana | 2 | . | 4 | | | | 87 | 12 | 7 | | | |
| | Kahasane | 11 | 8 | 3 | | | | 67 | 14 | 5 | | | |
| | Stehanagh | . | . | . | | | | 109 | 1 | 11 | | | |
| | | | | | 33 | . | 10 | | | | 629 | 7 | 9 |
| Myles Staunton | late collector | . | . | . | | | | 95 | 4 | 1 | | | |
| | | | | | | | | | | | 95 | 4 | 1 |
| | | | | | 196 | 7 | 9 | | | | 2391 | 18 | 9 |

NOTE.—A total is to be inserted in Red Ink at the foot of each Collector's District, as well as for the entire Union. Debit the Treasurer and Credit the several Electoral Divisions with the respective amounts lodged.

The Clerk's Account of petty Disbursements made by him since last Meeting, amounting to £

The following Books were exhibited by the Clerk, he having first ascertained the accuracy of the entries made therein by the Master of the Workhouse, and authenticated the same by his Signature:

1. The Weekly Relief List and Abstract.
2. The Provision Check Account.
3. The Provision Receipt and Consumption Account.

By which it appeared that the Cost of Provisions and Necessaries received during the week was, £ 17 . 17 s. 11 d.

Debit Provision Account, and Credit Invoice Account. £ s. d.

The Cost of Provisions and Necessaries consumed was 21 : 18 : .

Debit Maintenance Account, and Credit Provision Account.

And the general average Cost of an Inmate for the week was : 2 : 3

Average Cost in Infirmary, : 2 : 11

Average Cost in Fever Hospital, : 3 : 6

The Master's estimate of Provisions and Necessaries required for the ensuing week was examined, and orders were duly made for the several articles specified, namely:

- 704 lbs of Bread
- 62 lbs of Meat
- 1/2 Ton of whole Meal
- 400 qrs of Milk
- 7 lbs of Tea
- 28 lbs of Sugar
- 1 lb of Pepper
- 3 p^{ts} of Whiskey

The following Books were also produced by the Clerk, their accuracy having been previously ascertained by him, and authenticated by his Signature:—

1. The several Clothing Accounts.
2. The Medical Officers' Books.

The Out-door Relief Lists and Weekly Receipt and Expenditure Books of the several Relieving Officers were then produced by the Clerk, their accuracy having been previously ascertained by him, and authenticated by his signature.

The Abstract of the Out-door Relief Lists was also produced by the Clerk, having been duly entered up by him for the last week ended Saturday, the day of 186 , whereby it appeared that in that week the Total Expenditure in Out-door Relief was

| | | | | | | |
|-----------|---|---|---|---|----|----|
| In money, | - | - | - | £ | s. | d. |
| In kind, | - | - | - | | | |
| Total, | - | - | - | £ | | |

Credit each Relieving Officer, as per Receipt and Expenditure Book.

The requirements of each Relieving Officer for the ensuing week having been duly considered and estimated by the Board, Cheques on the Treasurer and Orders on Contractors were duly signed and delivered to each of them, of the following amounts and value, respectively:

| RELIEF DISTRICT. | Name of Relieving Officer. | By Cheque on Treasurer. £ s. d. | By Order on Contractors. | | RELIEF DISTRICT. | Name of Relieving Officer. | By Cheque on Treasurer. £ s. d. | By Order on Contractors. | |
|------------------|----------------------------|------------------------------------|--------------------------|-------------------|------------------|----------------------------|------------------------------------|--------------------------|-------------------|
| | | | Article and quantity. | Value. £ s. d. | | | | Article and quantity. | Value. £ s. d. |
| No. I. | | | | | Bt. forwd. | | | | |
| No. II. | | | | | No. X. | | | | |
| No. III. | | | | | No. XI. | | | | |
| No. IV. | | | | | No. XII. | | | | |
| No. V. | | | | | No. XIII. | | | | |
| No. VI. | | | | | No. XIV. | | | | |
| No. VII. | | | | | No. XV. | | | | |
| No. VIII. | | | | | No. XVI. | | | | |
| No. IX. | | | | | No. XVII. | | | | |
| Car. forwd. | | | | | Total, | | | | |

Credit Treasurer with Cheques.

Debit each Relieving Officer with Cheques and Orders.

On the Report and recommendation of the Finance Committee the following Bills having been duly examined, and found to be correct, and in accordance with the several Orders, were directed to be paid, and Cheques for the several amounts were duly drawn on the Treasurer and Signed, namely:

1. Clothing Account. £ s. d.

Martin Healy for Shoes 3 12 .

Debit Clothing Account and Credit Treasurer with the several sums as above.

2. Establishment Account.

Debit Establishment Account and Credit Treasurer with the several sums as above.

3. Warehouse Invoice Account.

| | £ | s. | d. |
|--|---|----|----|
| | | | |
| | | | |
| | | | |
| | | | |
| | | | |

Debit Warehouse Invoice Account and Credit Treasurer with the several sums as above.

^{Balance}
4. Out-door Relief Invoice Account.

Thos Walsh for Meat
James Slator for Petty Bills
Ja^s Forrest Relief Officer
M^r. O Nolan Law Costs

| | £ | s. | d. |
|--|----|----|----|
| Thos Walsh for Meat | 16 | 6 | 6 |
| James Slator for Petty Bills | 1 | 19 | |
| Ja ^s Forrest Relief Officer | 1 | | |
| M ^r . O Nolan Law Costs | 3 | 19 | 2 |

Credit Treasurer and Debit Out-door Relief Invoice Account with the several sums as above.

The Clerk's Report of Vaccination was read — (this on the first meeting in every month) —
Number of successful cases.

The Report of the Visiting Committee was read and Orders were made thereon as follows;

The Reports of the Master and other Officers were read, and Orders made thereon as follows:—

The Master reported the Provisions received all good

The following Orders of the Poor Law Commissioners were laid before the Board, and directions given thereon as follows:

The following Letters from the Poor Law Commissioners and others were read by the Clerk, and directions given to answer them respectively to the following effect (or Orders made on them respectively as follows):

Letter from Poor Law Commissioners, N^o 24,215, 30 November 1866 calling the attention of the Guardians to the outstanding areas of Rate, uncollected, and requesting the Guardians to take steps to have the collection completed without further delay.

The Commissioners have been informed that new Rate Books were signed on the 30 October last, which closes the previous collection, (the areas being brought forward) the Collector, ^{at present} Books, were signed on the 21 November, and the New Rate is now collecting.

Circular from same N^o 168, 5 December 1866 regarding the permanent employment of Sanitary officers.

Galway Council Archives

The cases of provisional relief, and applications for relief were considered and decided on, as set forth in the Application and Report Books.

The number of Provisional Admissions to the Workhouse confirmed was 12

Ditto disallowed - - - - -

The number of applicants admitted to the Workhouse was 4

The number of cases of provisional Out-door relief was - - - - -

Do. do. in which relief was continued by the Guardians - - - - -

The number of other applicants in the Relieving Officer's Books relieved by order of the Guardians was - - - - -

The number of applicants for whom relief was not ordered - - - - -

The Bonds and other securities in force were laid before the Guardians by the Clerk, together with his Report thereon, as follows: (this on the second Meeting after the Annual Election in every year.)

Ordered that the usual Breakfast of Tea and dinner of Meat be given to the pauper inmates, on next Xmas day. —

Mr John D Nolan Solicitor handed the Board half notes for the sum of £105. and 4/1 cash, being £95.4.1 Amount of Rates collected and retained in hands, by M Staunton late Collector, and the remaining £10. being the Amount of a cheque given by the Board to Mr. Nolan on account of costs pending the proceedings against Staunton. —

Ordered that when the second half notes are received by our Clerk the Amount be lodged with the Treasurer. —

A H

14 and 15 Vic., c. 68;
(No. 27.)

MINUTES of PROCEEDINGS of the BOARD of GUARDIANS of the 10th UNION,
on Tues day, the 11 day of December 1866.—continued.

SUPPLEMENTAL SHEET:—MEDICAL CHARITIES ACT, 14 & 15 Vic., cap. 68; and
NUISANCES REMOVAL AND DISEASES PREVENTION ACTS, 1848 & 1849.

*An Estimate of Medicines, &c., required by the Medical Officer of the _____
Dispensary District, approved by the Committee of Management, was laid before the Board, with a
Procuration from the Committee for the supply of the same, and Directions were given thereon
as follows:*

*An Invoice of Medicines forwarded by the Contractor, for the _____
Dispensary District, in pursuance of an Order of the Board in their Minutes of _____
having been received from him, the Clerk laid the Invoice before the Board, and was directed to
forward the same (or reported that he had forwarded the same, as the case may be,) to the Medical
Officer of the District, retaining a Copy of the Invoice for the use of the Guardians.*

*On application of the Committee of Management of the _____
Dispensary District, the following supplies of Books, Stationery, Forms, or other requisites were
ordered to be supplied:*

The following Letters on matters arising under the Medical Charities Act or the Nuisances Removal and Diseases Prevention Acts, from the Poor Law Commissioners and others, were read by the Clerk, and directions given to answer them respectively, to the following effect (or Orders were made on them respectively as follows:—)

Read Letter from Poor Law Commissioners dated 6th December 1866 stating that

It appears by a report from D^r Roughan Medical Inspector on the mode in which D^r Hynes Medical Officer of Ballindereen Dispensary keeps the Registry of Vaccination and directing that the Clerk of the Union furnish a Vaccination Register (form A). — D^r Roughan observes that there is no fire place in the Ardahan Dispensary Depot and no fuel supplied that the outside of the Dispensary requires lime washing and the window sashes require repair and Glazing. —

Ordered that D^r Hynes be supplied with a vaccination Register, and that a copy of the report relating to Ardahan Dispensary be sent to Mr. George Taylor, with notice that unless the necessary repairs and requisites are immediately completed, the Guardians will execute the work and charge him the expense. —

(Signed,)

Clerk of the Union.

Goat UNION.

Population in 1861—20501

Present Net Annual Value, £43184.15.0

STATE of the WORKHOUSE for the Week ending Saturday, the 15 day of Decr 1866.

Table with columns: Number of inmates for which accommodation is provided, Able-bodied (Male/Female), Aged and infirm persons, Boys and Girls, Children, Infants, RETURN OF SICK AND LUNATICS (Number in Hospital, No. of Lunatics), OBSERVATIONS.

RETURN of DESTITUTE PERSONS relieved out of the Workhouse, as by Relief Lists, for the last Week ended Saturday, the day of 1866, authenticated and laid before the Board of Guardians at this Meeting.

Table with columns: RELIEF DISTRICT, Destitute Persons relieved out of the Workhouse under 10 Vict. c. 31, s. 1., Total relieved out of the Workhouse, RELIEF DISTRICT, Destitute Persons relieved out of the Workhouse under 10 Vict. c. 31, s. 1., Destitute Persons relieved out of the Workhouse, but not comprised in Sec. 1., Total relieved out of the Workhouse.

COPY of MINUTES of Proceedings of the Board of Guardians, at a Meeting held on Tuesday the 15 day of December 1866.

PRESENT: In the Chair, Arthur Alexander

Other Guardians:—

Mich^l Staunton Pat^r C. Spelman J^r Broderick

The Minutes of last Meeting were read and Signed.

The Warehouse Register was produced, examined, and authenticated, from No. 477² to No. 477⁶, both inclusive, by the signature of the Chairman, and countersignature of the Clerk.

The Out-door Relief Register was produced, examined, and authenticated from No. _____ to No. _____ inclusive, by the signature of the Chairman and countersignature of the Clerk.

The Clerk's Report on the execution of Orders previously made by the Board was read to the following effect:

The Ledger was produced by the Clerk, fasted up to the last day of Meeting, with the proper Debits and Credits, as ordered on that day.

The Treasurer's Book of Receipts and Payments was produced, by which it appeared that there had been received during the week £ 50 : : :

Paid during the week £ 27 : 9 : 5

And that the Balance on the Account against the Guardians was, £ 155 : 19 : 5

The Book was signed by the Chairman.

The Weekly balance-sheets of the several Collectors were laid before the Board, their accuracy having been first ascertained and authenticated by the Clerk.

The Lodgments made of Rates collected in the several Electoral Divisions appear to have been as follows:—

| Name of each Collector. | Electoral Divisions arranged in Collectors' Districts | Collected and Lodged. | | | Total. | | | Remaining. | | | Total. | | |
|-------------------------|---|-----------------------|----|----|--------|----|-----|------------|----|----|--------|----|----|
| | | £ | s. | d. | £ | s. | d. | £ | s. | d. | £ | s. | d. |
| Thos Hardiman | Ardamullivan | | | | | | | 112 | 3 | 9 | | | |
| | Ballycaghan | | | | | | | 85 | 7 | 7 | | | |
| | Beagh | | | | | | | 128 | 6 | 4 | | | |
| | Burnahon | | | | | | | 43 | 17 | 11 | | | |
| | Cahernore | | | | | | | 110 | 9 | 1 | | | |
| | Cappard | | | | | | | 40 | 10 | 9 | | | |
| | Doon | | | | | | | 126 | 11 | 1 | | | |
| | Cor | | | | | | | 399 | 16 | 6 | | | |
| | Kilbracany | | | | | | | 60 | 2 | 8 | | | |
| | Killinny | | | | | | | 89 | 7 | 9 | | | |
| | Kiltanon | | | | | | | 180 | 13 | 7 | | | |
| | Kilthomas | | | | | | | 55 | | 2 | | | |
| Kurana | | | | | | | 234 | 19 | 9 | | | | |
| | | | | | | | | | | | 1667 | 6 | 11 |
| Michl Taylor | Ardrahan | 2 | 3 | 2 | | | | 60 | | 8 | | | |
| | Castle Taylor | | | | | | | 65 | 14 | 3 | | | |
| | Drumacor | 20 | 3 | 7 | | | | 137 | 11 | 8 | | | |
| | Killeely | | | | | | | 79 | 5 | 6 | | | |
| | Kilkenavana | 8 | 16 | 9 | | | | 78 | 15 | 10 | | | |
| | Rahasane | 13 | 1 | 6 | | | | 52 | 12 | 11 | | | |
| | Shehanagh | 5 | 15 | | | | | 103 | 6 | 11 | | | |
| | | | | | 50 | | | | | | 579 | 7 | 9 |
| Myles Staunton | late collector | | | | | | | 95 | 4 | 1 | | | |
| | | | | | | | | | | | 95 | 4 | 1 |
| | Total | | | | 50 | | | | | | 2341 | 18 | 9 |

NOTE.—A total is to be inserted in Red Ink at the foot of each Collector's District, as well as for the entire Union. Debit the Treasurer and Credit the several Electoral Divisions with the respective amounts lodged.

The Clerk's Account of petty Disbursements made by him since last Meeting, amounting to £ was produced and passed.

The following Books were exhibited by the Clerk, he having first ascertained the accuracy of the entries made therein by the Master of the Workhouse, and authenticated the same by his Signature:

1. The Weekly Relief List and Abstract.
2. The Provision Check Account.
3. The Provision Receipt and Consumption Account.

By which it appeared that the Cost of Provisions and Necessaries received during the week was, £ 19 . 17 s . 6 d.

Debit Provision Account, and Credit Invoice Account.

The Cost of Provisions and Necessaries consumed was £ 20 : 19 : 1

Debit Maintenance Account, and Credit Provision Account.

And the general average Cost of an Inmate for the week was : 2 : 3

Average Cost in Infirmary, : 2 : 11

Average Cost in Fever Hospital, : 3 : 10

The Master's estimate of Provisions and Necessaries required for the ensuing week was examined, and orders were duly made for the several articles specified, namely:

- 672 lb of Bread
- 59 lb of Meat
- 410 q^{rs} of Milk
- 7 lb of Tea
- 28 lb of Sugar
- 56 lb of Rice
- 1 lb of Pepper
- 3 Doz of Wine
- 4 q^{ts} of Whiskey

The following Books were also produced by the Clerk, their accuracy having been previously ascertained by him, and authenticated by his Signature:—

1. The several Clothing Accounts.
2. The Medical Officers' Books.

The Out-door Relief Lists and Weekly Receipt and Expenditure Books of the several Relieving Officers were then produced by the Clerk, their accuracy having been previously ascertained by him, and authenticated by his signature.

The Abstract of the Out-door Relief Lists was also produced by the Clerk, having been duly entered up by him for the last week ended Saturday, the day of 186 , whereby it appeared that in that week the Total Expenditure in Out-door Relief was

| | £ | s. | d. |
|-----------|---|----|----|
| In money, | - | - | - |
| In kind, | - | - | - |
| Total, | - | - | - |

Credit each Relieving Officer, as per Receipt and Expenditure Book.

The requirements of each Relieving Officer for the ensuing week having been duly considered and estimated by the Board, Cheques on the Treasurer and Orders on Contractors were duly signed and delivered to each of them, of the following amounts and value, respectively:

| RELIEF DISTRICT. | Name of Relieving Officer. | By Cheque on Treasurer. £ s. d. | By Order on Contractors. | | RELIEF DISTRICT. | Name of Relieving Officer. | By Cheque on Treasurer. £ s. d. | By Order on Contractors. | |
|------------------|----------------------------|------------------------------------|--------------------------|-------------------|------------------|----------------------------|------------------------------------|--------------------------|-------------------|
| | | | Article and quantity. | Value. £ s. d. | | | | Article and quantity. | Value. £ s. d. |
| No. I. | | | | | Bt. forwd. | | | | |
| No. II. | | | | | No. X. | | | | |
| No. III. | | | | | No. XI. | | | | |
| No. IV. | | | | | No. XII. | | | | |
| No. V. | | | | | No. XIII. | | | | |
| No. VI. | | | | | No. XIV. | | | | |
| No. VII. | | | | | No. XV. | | | | |
| No. VIII. | | | | | No. XVI. | | | | |
| No. IX. | | | | | No. XVII. | | | | |
| Car. forwd. | | | | | Total. | | | | |

Credit Treasurer with Cheques.

Debit each Relieving Officer with Cheques and Orders.

On the Report and recommendation of the Finance Committee the following Bills having been duly examined, and found to be correct, and in accordance with the several Orders, were directed to be paid, and Cheques for the several amounts were duly drawn on the Treasurer and Signed, namely:

1. Clothing Account. £ s. d.

| | | | |
|-----------------------|---|---|--|
| Ino Seech for Flannel | 2 | 2 | |
|-----------------------|---|---|--|

Debit Clothing Account and Credit Treasurer with the several sums as above.

2. Establishment Account.

| | | | |
|---|----|----|---|
| Very Rev ^d Deant Birmingham 1/4 Salary | 2 | 10 | |
| Rev ^d John Barry | 12 | 10 | |
| Thos Birmingham £12.10.0 Cath ^d Clarkson £6.17.0 | 19 | 7 | |
| A. M. Nolan £15.0.0 Eliz ^d Burke £4.0.0 | 19 | | |
| Bridget Forde £3.0.0 Martin Donohue £2.0.0 | 5 | | |
| Bridget O'Loughlin £1.10.0 James Slator £25.0.0 | 26 | 10 | |
| James Forrest £3.15.0 Pat ^d Burke £3.15.0 | 7 | 10 | |
| Edw Kennedy £2.10.0 Pat ^d Burke £2.10.0 | 5 | | |
| James Slator Petty Bills | 2 | 5 | 3 |

Debit Establishment Account and Credit Treasurer with the several sums as above.

3. *Workhouse Invoice Account.*

£ s. d.

| | | |
|---|----|----|
| £ | s. | d. |
| | | |
| | | |
| | | |
| | | |
| | | |
| | | |
| | | |
| | | |
| | | |
| | | |

Debit Workhouse Invoice Account and Credit Treasurer with the several sums as above.

Sundry
4. *Out-door Relief Invoice Account.*

£ s. d.

| | | |
|--|----|----|
| | | |
| <i>D. J. Hynes, Ju Salary Do</i> | | |
| <i>James Forrest Sanitary officer Salary</i> | 4 | 12 |
| <i>Pat Burke do</i> | 2 | |
| <i>Mary Madden Lime for Kinvara</i> | 8 | 6 |
| <i>Mr F Evans Clothing to 29 Sep</i> | 16 | 12 |
| | | 2 |

Credit Treasurer and Debit Out-door Relief Invoice Account with the several sums as above.

The Clerk's Report of Vaccination was read—(this on the first meeting in every month)—
Number of successful cases.

The Report of the Visiting Committee was read, and Orders were made thereon as follows:

The Reports of the Master and other Officers were read, and Orders made thereon as follows:—

The Master reported the Provision, received all good

The following Orders of the Poor Law Commissioners were laid before the Board, and directions given thereon as follows:

The following Letters from the Poor Law Commissioners and others were read by the Clerk, and directions given to answer them respectively to the following effect for Orders made on them respectively as follows:

Letter from Poor Law Commissioners, 17 Dec^r 1866, No. 24675, in reference to the Dietary of the Inmates of the Suffering Wards, and requesting that they may be furnished with a copy of any Report which may have been made by the Medical Officer thereon. —

Letter from same 17 Dec^r 1866, No. 22721, in reference to the appointment of an Apothecary for the Workhouse, and they request to be informed whether Tenders from competent persons have been advertised for, and with what result. —

In reference to the above, and taking into consideration the serious want of an apothecary for the Workhouse and altho' having complied with all the orders of the Commissioners, by an increase of Salary to £35 per Annum and advertising several times, no Tender has been received, The Guardians are desirous that the Workhouse should not be left without one, and that the duties of Medical Officer and apothecary should not be imposed upon one person whose other duties are

more than sufficient for him to attend to, there was no charge incompetency brought against Mr Gill, and he is still considered competent to perform the duty for a very numerous class of Dispensary patients, the charge against him being a partial neglect of duty for which he has been severely punished. The Guardians seeing by the last General advertisement six separate advertisements for apothecaries for Medical Establishments, one of which offers £50 a year and Board, leads them to believe that there is very little chance of a tender for this Workhouse. Under all the circumstances the Guardians hope the Commissioners will reconsider the subject, and they earnestly request it in the interests of the sick poor and of the Union.

The cases of provisional relief, and applications for relief were considered and decided on, as set forth in the Application and Report Books.

The number of Provisional Admissions to the Workhouse confirmed was - - - 5

Ditto disallowed - - - - - 1

The number of applicants admitted to the Workhouse was - - - 14

The number of cases of provisional Out-door relief was - - - -

Do. do. in which relief was continued by the Guardians - - - -

The number of other applicants in the Relieving Officer's Books relieved by order of the Guardians was - - - -

The number of applicants for whom relief was not ordered - - - -

The Bonds and other securities in force were laid before the Guardians by the Clerk, together with his Report thereon, as follows: (this on the second Meeting after the Annual Election in every year.)

The motion applied for fourteen days leave of absence

Granted seven days after Xmas. -

The Clerk laid before the Board the Treasury receipt for £105.4.1. recovered from the late collector Staunton, to be credited as follows

| | | |
|--------------------------------|----------|------------------|
| Drumacoo & Division, - - - - - | £ 32.6.8 | |
| Killeely do, - - - - - | 48.1.8 | |
| Killeenavana do, - - - - - | 14.15.9 | 95.4.1 |
| Election Law Fee - - - - - | | 10.0.0 |
| | | <u>£ 105.4.1</u> |

G. Hough
Chairman

14 and 15 Vic., c. 68,
(No. 27.)

MINUTES of PROCEEDINGS of the BOARD of GUARDIANS of the York UNION,
on Tues day, the 18th day of Decr 1866.—continued.

SUPPLEMENTAL SHEET:—MEDICAL CHARITIES ACT, 14 & 15 Vic., cap. 68; and
NUISANCES REMOVAL AND DISEASES PREVENTION ACTS, 1848 & 1849.

*An Estimate of Medicines, &c., required by the Medical Officer of the
Dispensary District, approved by the Committee of Management, was laid before the Board, with a
Procuration from the Committee for the supply of the same, and Directions were given thereon
as follows:*

*An Invoice of Medicines forwarded by the Contractor, for the
Dispensary District, in pursuance of an Order of the Board in their Minutes of
having been received from him, the Clerk laid the Invoice before the Board, and was directed to
forward the same (or reported that he had forwarded the same, as the case may be,) to the Medical
Officer of the District, retaining a Copy of the Invoice for the use of the Guardians.*

*On application of the Committee of Management of the
Dispensary District, the following supplies of Books, Stationery, Forms, or other requisites were
ordered to be supplied:*

The following Accounts of Expenses, (or Statement of Salaries due as the case may be,) under the Medical Charities Act, were laid before the Board, and Directions were given for Payment thereof (or such other directions as may be given:)

York Dispensary District
Account of Mr. A. Nolan for 1/4 Salary: Amount £ 20. 0. 0

Terence Gill do 7. 10. 0

Ballinacorney District

D. J. Hynes 1/4 Salary 30. 0. 0
Jas. H. Kelly Stationary &c 3. 15. 7

[This at the end of each half-year, in pursuance of Articles 28 and 29 of the General Rules for Dispensary Districts, dated 16th December, 1853.]

An Account of the Expenses incurred for the service of each Dispensary District in the Union, for the half-year ended 186, having been submitted to the Board, the Clerk was directed to furnish to the Committee of each Dispensary District a statement of all the Expenses of the District which have been included in the half-year's accounts. The following is the total Expense incurred for each Dispensary District for the half-year ended 186.

_____ District. £
_____ District. £

J. Hough
Chairman

Galway County Council

[This to be entered on the occasion of every appointment of a new Committee, after the annual Election of Guardians, and on the occasion of any election to fill any vacancies in a Dispensary Committee.] The Board elected the following Rate-payers to be Members of the Committees of Management of the following Dispensary Districts, respectively:—the Clerk to make a Return accordingly to the Poor Law Commissioners, and to issue the prescribed Notification to the Members elected, and to the Medical Officers of the respective Dispensary Districts, in pursuance of Articles 1, 2, and 3 of the General Regulations for Dispensary Districts.—The Clerk was also directed to supply Check Books of Medical Relief Tickets, (Forms E and E 2,) in pursuance of Article 27 of the Dispensary Regulations, to the new Members of the Committees; namely:—

_____ Dispensary District, Mr. _____ of _____

The following Orders of the Poor Law Commissioners under the Medical Charities Act were laid before the Board and directions given thereon as follows:

Order dated _____ (state subject.)

The following Letters on matters arising under the Medical Charities Act or the Nuisances Removal and Diseases Prevention Acts, from the Poor Law Commissioners and others, were read by the Clerk, and directions given to answer them respectively, to the following effect (or Orders were made on them respectively as follows:—)

Read Letter from _____ dated _____ stating that _____

Port UNION.

Population in 1861—22501

Present Net Annual Value, £43184.15.0

STATE of the WORKHOUSE for the Week ending Saturday, the 22^d day of *Decr* 186*6*.

| Number of inmates for which accommodation is provided. | No. that can be accommodated in each building. | Total No. in each building on the above date. | Able-bodied. | | | | | | | Total. | RETURN OF SICK AND LUNATICS. | | OBSERVATIONS. | | |
|---|--|---|--------------|------|--------|------|-------|--------|--|--------|--|-------------------------------|---|--|--|
| | | | Males. | Fem. | Males. | Fem. | Boys. | Girls. | Children above 5 and under 9 years of age. | | Children above 2 and under 5 years of age. | Infants under 2 years of age. | | Number in Hospital on the above date. | No. of Lunatics and Idiots in Workhouse on the above date. |
| Workhouse, | 729 | 129 | | | | | | | | | | | | | |
| Temporary Buildings, | | | | | | | | | | | | | | | |
| Additional Workhouse, | | | | | | | | | | | | | | | |
| Permanent Fever Hospital, | 57 | 2 | | | | | | | | | | | | | |
| Fever Sheds, | | | | | | | | | | | | | | | |
| Total, | 780 | 131 | | | | | | | | | | | | | |
| Remaining on previous Saturday, as per last Return, | | | 5 | 38 | 13 | 14 | | | 15 | 21 | 25 | 131 | In Work-house Hospital, } 53 In Fever Hospital, } 2 Total, . 55 | In separate Wards, } In Wards with other inmates, } 2 Total, . 2 | |
| Admitted during the Week, | | | 1 | 5 | | | | | | | | 6 | | | |
| TOTAL, | | | 6 | 43 | 13 | 14 | | | 15 | 21 | 25 | 137 | | | |
| Discharged during the Week, | | | 1 | | 2 | | | | 2 | 1 | | 6 | | | |
| Died, | | | | | | | | | | | | | | | |
| Total Discharged and Dead, | | | 1 | | 2 | | | | 2 | 1 | | 6 | | | |
| REMAINING ON THE ABOVE DATE, | | | 5 | 43 | 11 | 14 | | | 13 | 20 | 25 | 131 | | | |

RETURN of DESTITUTE PERSONS relieved out of the Workhouse, as by Relief Lists, for the last Week ended Saturday, the _____ day of _____ 186 , authenticated and laid before the Board of Guardians at this Meeting.

| RELIEF DISTRICT. | Destitute Persons relieved out of the Workhouse under 10 Vict. c. 31, s. 1. | | Destitute Persons relieved out of the Workhouse, but not comprised in Sec. 1. | | Total relieved out of the Workhouse. | | RELIEF DISTRICT. | Destitute Persons relieved out of the Workhouse under 10 Vict. c. 31, s. 1. | | Destitute Persons relieved out of the Workhouse, but not comprised in Sec. 1. | | Total relieved out of the Workhouse. | |
|------------------|---|---|---|---|--------------------------------------|----------|------------------|---|---|---|---|--------------------------------------|----------|
| | Number of cases relieved. | Number of Persons, including Applicant and Family, dependent on him or her. | Number of cases relieved. | Number of Persons, including Applicant and Family, dependent on him or her. | Cases. | Persons. | | Number of cases relieved. | Number of Persons, including Applicant and Family, dependent on him or her. | Number of cases relieved. | Number of Persons, including Applicant and Family, dependent on him or her. | Cases. | Persons. |
| No. I. | | | | | | | Bt. forwd. | | | | | | |
| No. II. | | | | | | | No. X. | | | | | | |
| No. III. | | | | | | | No. XI. | | | | | | |
| No. IV. | | | | | | | No. XII. | | | | | | |
| No. V. | | | | | | | No. XIII. | | | | | | |
| No. VI. | | | | | | | No. XIV. | | | | | | |
| No. VII. | | | | | | | No. XV. | | | | | | |
| No. VIII. | | | | | | | No. XVI. | | | | | | |
| No. IX. | | | | | | | No. XVII. | | | | | | |
| Car. forwd. | | | | | | | TOTAL - | | | | | | |

COPY of MINUTES of Proceedings of the Board of Guardians, at a Meeting held on the _____ day of _____ 186 .

PRESENT: In the Chair,
Other Guardians:—

No meeting + masday

(Signed,)

Clerk of the Union.

The Minutes of last Meeting were read and Signed.

The Workhouse Register was produced, examined, and authenticated, from No. _____ to No. _____, both inclusive, by the signature of the Chairman, and countersignature of the Clerk.

The Out-door Relief Register was produced, examined, and authenticated from No. _____ to No. _____, inclusive, by the signature of the Chairman and countersignature of the Clerk.

The Clerk's Report on the execution of Orders previously made by the Board was read to the following effect:

The Ledger was produced by the Clerk, posted up to the last day of Meeting, with the proper Debits and Credits, as ordered on that day.

The Treasurer's Book of Receipts and Payments was produced, by which it appeared that there had been received during the week

£ 226: 17: 6

Baid during the week. £ 112: 7: 11

And that the Balance on the Account against the Guardians was, £ 31: 7: 10

The Book was signed by the Chairman.

The Weekly balance-sheets of the several Collectors were laid before the Board, their accuracy having been first ascertained and authenticated by the Clerk.

The Lodgments made of Rates collected in the several Electoral Divisions appear to have been as follows:—

| Name of each Collector. | Electoral Divisions arranged in Collectors' Districts | Collected and Lodged. | | | Total. | | | Remaining. | | | Total. | | |
|-------------------------------|---|-----------------------|----|----|--------|-----|----|------------|----|----|--------|------|----|
| | | £ | s. | d. | £ | s. | d. | £ | s. | d. | £ | s. | d. |
| Thos Hardiman | Ardamullivan | | | | | | | 112 | 3 | 9 | | | |
| | Ballycahalan | | | | | | | 85 | 7 | 7 | | | |
| | Beagh | | | | | | | 128 | 6 | 4 | | | |
| | Bunnahow | | | | | | | 113 | 17 | 11 | | | |
| | Cahernore | | | | | | | 110 | 9 | 1 | | | |
| | Cappard | | | | | | | 40 | 10 | 9 | | | |
| | Doonac | | | | | | | 126 | 11 | 1 | | | |
| | Gort | 25 | 7 | 10 | | | | 374 | 8 | 8 | | | |
| | Kilbeacanty | 16 | 4 | 2 | | | | 43 | 18 | 6 | | | |
| | Killinny | 9 | 2 | 5 | | | | 80 | 5 | 4 | | | |
| | Kiltaston | 51 | 17 | 5 | | | | 128 | 16 | 2 | | | |
| | Killthomas | 13 | 3 | 2 | | | | 41 | 17 | | | | |
| | Kinnana | 15 | 18 | 5 | | | | 219 | 1 | 4 | | | |
| | | | | | | 131 | 13 | 5 | | | | 1535 | 13 |
| Michl Taylor | Ardahan | | | | | | | 60 | | 8 | | | |
| | Castle Taylor | | | | | | | 65 | 14 | 3 | | | |
| | Drumacoo | | | | | | | 137 | 11 | 8 | | | |
| | Killeely | | | | | | | 79 | 5 | 6 | | | |
| | Killeenavanna | | | | | | | 78 | 15 | 10 | | | |
| | Rahasane | | | | | | | 54 | 12 | 11 | | | |
| | Skehanagh | | | | | | | 103 | 6 | 11 | | | |
| | | | | | | | | | | | 579 | 7 | 9 |
| Myles Staunton late collector | Drumacoo | 32 | 6 | 8 | | | | | | | | | |
| | Killeely | 48 | 1 | 8 | | | | | | | | | |
| | Killeenavanna | 14 | 15 | 9 | | | | | | | | | |
| | | | | | 95 | 4 | 1 | | | | | | |
| | Total | | | | 226 | 17 | 6 | | | | 2115 | 1 | 3 |

NOTE.—A total is to be inserted in Red Ink at the foot of each Collector's District, as well as for the entire Union.

Debit the Treasurer and Credit the several Electoral Divisions with the respective amounts lodged.

The Clerk's Account of petty Disbursements made by him since last Meeting, amounting to £ was produced and passed.

The following Books were exhibited by the Clerk, he having first ascertained the accuracy of the entries made therein by the Master of the Workhouse, and authenticated the same by his Signature:

1. The Weekly Relief List and Abstract.
2. The Provision Check Account.
3. The Provision Receipt and Consumption Account.

By which it appeared that the Cost of Provisions and Necessaries received during the week was, £ 23. 19 s. 7 d.

Debit Provision Account, and Credit Invoice Account.

The Cost of Provisions and Necessaries consumed was . . . £ s. d. 21 : 2 : 3

Debit Maintenance Account, and Credit Provision Account.

And the general average Cost of an Inmate for the week was : 2 : 3

Average Cost in Infirmary, : 2 : 11

Average Cost in Fever Hospital, : 4 : ..

The Master's estimate of Provisions and Necessaries required for the ensuing week was examined, and orders were duly made for the several articles specified, namely:



The following Books were also produced by the Clerk, their accuracy having been previously ascertained by him, and authenticated by his Signature:—

1. The several Clothing Accounts.
2. The Medical Officers' Books.

The Out-door Relief Lists and Weekly Receipt and Expenditure Books of the several Relieving Officers were then produced by the Clerk, their accuracy having been previously ascertained by him, and authenticated by his signature.

The Abstract of the Out-door Relief Lists was also produced by the Clerk, having been duly entered up by him for the last week ended Saturday, the day of 186, whereby it appeared that in that week the Total Expenditure in Out-door Relief was

| | £ | s. | d. |
|---------------------|---|----|----|
| In money, | - | - | - |
| In kind, | - | - | - |
| Total, | - | - | - |

Credit each Relieving Officer, as per Receipt and Expenditure Book.

The requirements of each Relieving Officer for the ensuing week having been duly considered and estimated by the Board, Cheques on the Treasurer and Orders on Contractors were duly signed and delivered to each of them, of the following amounts and value, respectively:

| RELIEF DISTRICT. | Name of Relieving Officer. | By Cheque on Treasurer. | | By Order on Contractors. | | RELIEF DISTRICT. | Name of Relieving Officer. | By Cheque on Treasurer. | | By Order on Contractors. | |
|------------------|----------------------------|-------------------------|-------|--------------------------|----------------|------------------|----------------------------|-------------------------|-------|--------------------------|----------------|
| | | £ | s. d. | Article and quantity. | Value. £ s. d. | | | £ | s. d. | Article and quantity. | Value. £ s. d. |
| No. I. | | | | | | Bt. forwd. | | | | | |
| No. II. | | | | | | No. X. | | | | | |
| No. III. | | | | | | No. XI. | | | | | |
| No. IV. | | | | | | No. XII. | | | | | |
| No. V. | | | | | | No. XIII. | | | | | |
| No. VI. | | | | | | No. XIV. | | | | | |
| No. VII. | | | | | | No. XV. | | | | | |
| No. VIII. | | | | | | No. XVI. | | | | | |
| No. IX. | | | | | | No. XVII. | | | | | |
| Car. forwd. | | | | | | Total. | | | | | |

Credit Treasurer with Cheques.

Debit each Relieving Officer with Cheques and Orders.

On the Report and recommendation of the Finance Committee the following Bills having been duly examined, and found to be correct, and in accordance with the several Orders, were directed to be paid, and Cheques for the several amounts were duly drawn on the Treasurer and Signed, namely:

1. Clothing Account.

£ s. d.

| | | |
|--|--|--|
| | | |
|--|--|--|

Debit Clothing Account and Credit Treasurer with the several sums as above.

2. Establishment Account.

| | | |
|--|--|--|
| | | |
|--|--|--|

Debit Establishment Account and Credit Treasurer with the several sums as above.

The following Letters on matters arising under the Medical Charities Act or the Nuisances Removal and Diseases Prevention Acts, from the Poor Law Commissioners and others, were read by the Clerk, and directions given to answer them respectively, to the following effect (or Orders were made on them respectively as follows:—)

Read Letter from _____ dated _____ stating that

Port UNION.

Population in 1861— 20501

Present Net Annual Value, £43184.15.0

STATE of the WORKHOUSE for the Week ending Saturday, the 29 day of Decr 1866.

| Number of inmates for which accommodation is provided. | No. that can be accommodated in each building. | Total No. in each building on the above date. | Able-bodied. | | Aged and infirm persons, and adult persons, above 15 years of age, but not working. | | Boys and Girls above 9 and under 15 years of age. | | Children above 5 and under 9 years of age. | Children above 3 and under 5 years of age. | Infants under 2 years of age. | RETURN OF SICK AND LUNATICS. | | OBSERVATIONS. |
|---|--|---|--------------|-----------|---|-----------|---|----------|--|--|-------------------------------|---------------------------------------|--|--|
| | | | Males. | Fem. | Males. | Fem. | Boys. | Girls. | | | | Number In Hospital on the above date. | No. of Lunatics and Idiots in Workhouse on the above date. | |
| Workhouse, . . . | 729 | 127 | | | | | | | | | | | | |
| Temporary Buildings, . . . | | | | | | | | | | | | | | |
| Additional Workhouse, . . . | 57 | 3 | | | | | | | | | | | | |
| Permanent Fever Hospital, . . . | | | | | | | | | | | | | | |
| Fever Sheds, . . . | | | | | | | | | | | | | | |
| Total, . . . | 780 | 130 | | | | | | | | | | | | |
| Remaining on previous Saturday, as per last Return, . . . | | | 5 | 43 | 11 | 14 | | | 13 | 20 | 26 | 131 | In Workhouse Hospital, 52 In Fever Hospital, 3 | In separate Wards, with other inmates, 2 |
| Admitted during the Week, . . . | | | 2 | 2 | | 1 | 1 | | 1 | 1 | 3 | 11 | | |
| TOTAL, . . . | | | 7 | 45 | 11 | 15 | 1 | 1 | 14 | 21 | 28 | 142 | Total, 55 | Total, 2 |
| Discharged during the Week, . . . | | | 1 | 1 | | 2 | 1 | | 2 | 1 | 1 | 12 | | |
| Died, . . . | | | | | | | | | | | | | | |
| Total Discharged and Dead, . . . | | | 1 | 1 | | 2 | 1 | | 2 | 1 | 1 | 12 | | |
| REMAINING ON THE ABOVE DATE, . . . | | | 3 | 44 | 11 | 13 | | | 12 | 20 | 27 | 130 | | |

RETURN of DESTITUTE PERSONS relieved out of the Workhouse, as by Relief Lists, for the last Week ended Saturday, the _____ day of _____ 1866, authenticated and laid before the Board of Guardians at this Meeting.

| RELIEF DISTRICT. | Destitute Persons relieved out of the Workhouse, under 10 Vict. c. 31, s. 1. | | Destitute Persons relieved out of the Workhouse, but not comprised in Sec. 1. | | Total relieved out of the Workhouse. | | RELIEF DISTRICT. | Destitute Persons relieved out of the Workhouse, under 10 Vict. c. 31, s. 1. | | Destitute Persons relieved out of the Workhouse, but not comprised in Sec. 1. | | Total relieved out of the Workhouse. | |
|------------------|--|---|---|---|--------------------------------------|----------|------------------|--|---|---|---|--------------------------------------|----------|
| | Number of cases relieved. | Number of Persons, including Applicant and Family, dependent on him or her. | Number of cases relieved. | Number of Persons, including Applicant and Family, dependent on him or her. | Cases. | Persons. | | Number of cases relieved. | Number of Persons, including Applicant and Family, dependent on him or her. | Number of cases relieved. | Number of Persons, including Applicant and Family, dependent on him or her. | Cases. | Persons. |
| No. I. | | | | | | | Bt. forwd. | | | | | | |
| No. II. | | | | | | | No. X. | | | | | | |
| No. III. | | | | | | | No. XI. | | | | | | |
| No. IV. | | | | | | | No. XII. | | | | | | |
| No. V. | | | | | | | No. XIII. | | | | | | |
| No. VI. | | | | | | | No. XIV. | | | | | | |
| No. VII. | | | | | | | No. XV. | | | | | | |
| No. VIII. | | | | | | | No. XVI. | | | | | | |
| No. IX. | | | | | | | No. XVII. | | | | | | |
| Car. forwd. | | | | | | | TOTAL - | | | | | | |

COPY of MINUTES of Proceedings of the Board of Guardians, at a Meeting held on the _____ day of _____ 1866.

PRESENT: In the Chair,

Other Guardians:—

No Meeting Tuesday 1st Jan'y 1867

No Guardian attended

(Signed,)

Clerk of the Union.

The Minutes of last Meeting were read and Signed.

The Warehouse Register was produced, examined, and authenticated, from No. _____ to No. _____, both inclusive, by the signature of the Chairman, and countersignature of the Clerk.

The Out-door Relief Register was produced, examined, and authenticated from No. _____ to No. _____ inclusive, by the signature of the Chairman and countersignature of the Clerk.

The Clerk's Report on the execution of Orders previously made by the Board was read to the following effect:

The Ledger was produced by the Clerk, posted up to the last day of Meeting, with the proper Debits and Credits, as ordered on that day.

The Treasurer's Book of Receipts and Payments was produced, by which it appeared that there

had been received during the week £ : :

Baid during the week £ : :

And that the Balance on the Account the Guardians was, £ : :

The Book was signed by the Chairman.

The Weekly balance-sheets of the several Collectors were laid before the Board, their accuracy having been first ascertained and authenticated by the Clerk.

The Lodgments made of Rates collected in the several Electoral Divisions appear to have been as follows:—

| Name of each Collector. | Electoral Divisions arranged in Collectors' Districts | Collected and Lodged. | | | Total. | | | Remaining. | | | Total. | | | |
|-------------------------|---|-----------------------|----|----|--------|----|-----|------------|----|----|--------|------|----|---|
| | | £ | s. | d. | £ | s. | d. | £ | s. | d. | £ | s. | d. | |
| Thos Hardiman | Ardamyllewan | 25 | 3 | 5 | | | | 87 | . | 4 | | | | |
| | Ballyughalan | 22 | 12 | 2 | | | | 62 | 15 | 5 | | | | |
| | Beagh | 20 | 9 | 3 | | | | 107 | 17 | 1 | | | | |
| | Bunmahow | 4 | 14 | 3 | | | | 39 | 3 | 8 | | | | |
| | Cahernore | 10 | 17 | 4 | | | | 99 | 11 | 9 | | | | |
| | Cappao | 1 | 11 | . | | | | 38 | 19 | 9 | | | | |
| | Doonin | 7 | 4 | 4 | | | | 119 | 6 | 9 | | | | |
| | Gort | 20 | 19 | 5 | | | | 353 | 9 | 3 | | | | |
| | Kilbeacanty | . | . | . | | | | 45 | 18 | 6 | | | | |
| | Killinny | . | . | . | | | | 80 | 5 | 4 | | | | |
| | Killiston | . | . | . | | | | 128 | 16 | 2 | | | | |
| | Kilthomas | . | . | . | | | | 41 | 17 | . | | | | |
| | Kinnana | . | . | . | | | | 219 | 1 | 4 | | | | |
| | | | | | | | 113 | 11 | 2 | | | 1422 | 2 | 4 |
| Michl Taylor | Arduahan | | | | | | | 60 | . | 8 | | | | |
| | Castle Taylor | | | | | | | 65 | 14 | 3 | | | | |
| | Drumacoo | 15 | 11 | 8 | | | | 122 | . | . | | | | |
| | Killeely | 14 | 19 | 4 | | | | 64 | 6 | 2 | | | | |
| | Killeenavana | 8 | 17 | . | | | | 69 | 18 | 10 | | | | |
| | Rahasane | 2 | 6 | 1 | | | | 52 | 6 | 10 | | | | |
| Shehanagh | 8 | 5 | 11 | | | | 95 | 1 | . | | | | | |
| | | | | | | | 50 | . | . | | | 529 | 7 | 9 |
| | Total | | | | | | 113 | 11 | 2 | | | 1951 | 10 | 1 |

NOTE.—A total is to be inserted in Red Ink at the foot of each Collector's District, as well as for the entire Union.

Debit the Treasurer and Credit the several Electoral Divisions with the respective amounts lodged.

The Clerk's Account of petty Disbursements made by him since last Meeting, amounting to £ was produced and passed.

The following Books were exhibited by the Clerk, he having first ascertained the accuracy of the entries made therein by the Master of the Workhouse, and authenticated the same by his Signature:

1. The Weekly Relief List and Abstract.
2. The Provision Check Account.
3. The Provision Receipt and Consumption Account.

By which it appeared that the Cost of Provisions and Necessaries received during the week was, £ 18. 12 s. 5 d.

Debit Provision Account, and Credit Invoice Account.

The Cost of Provisions and Necessaries consumed was £ 24 : 2 : 7

Debit Maintenance Account, and Credit Provision Account.

And the general average Cost of an Inmate for the week was : 2 : 3

Average Cost in Infirmary, : 3 : -

Average Cost in Fever Hospital, : 4 : 6

The Master's estimate of Provisions and Necessaries required for the ensuing week was examined, and orders were duly made for the several articles specified, namely:

Guernsey County Council Archiving

The following Books were also produced by the Clerk, their accuracy having been previously ascertained by him, and authenticated by his Signature:—

1. The several Clothing Accounts.
2. The Medical Officers' Books.

The Out-door Relief Lists and Weekly Receipt and Expenditure Books of the several Relieving Officers were then produced by the Clerk, their accuracy having been previously ascertained by him, and authenticated by his signature.

The Abstract of the Out-door Relief Lists was also produced by the Clerk, having been duly entered up by him for the last week ended Saturday, the day of 186, whereby it appeared that in that week the Total Expenditure in Out-door Relief was

| | | | | | | |
|-----------|---|---|---|---|----|----|
| | | | | £ | s. | d. |
| In money, | - | - | - | - | - | - |
| In kind, | - | - | - | - | - | - |
| Total, | - | - | - | - | - | - |

Credit each Relieving Officer, as per Receipt and Expenditure Book.

The requirements of each Relieving Officer for the ensuing week having been duly considered and estimated by the Board, Cheques on the Treasurer and Orders on Contractors were duly signed and delivered to each of them, of the following amounts and value, respectively:

| RELIEF DISTRICT. | Name of Relieving Officer. | By Cheque on Treasurer. | | By Order on Contractors. | | RELIEF DISTRICT. | Name of Relieving Officer. | By Cheque on Treasurer. | | By Order on Contractors. | |
|------------------|----------------------------|-------------------------|----|--------------------------|-----------------------|------------------|----------------------------|-------------------------|---|--------------------------|----|
| | | £ | s. | d. | Article and quantity. | | | Value. | £ | s. | d. |
| No. I. | | | | | | Bt. forwd. | | | | | |
| No. II. | | | | | | No. X. | | | | | |
| No. III. | | | | | | No. XI. | | | | | |
| No. IV. | | | | | | No. XII. | | | | | |
| No. V. | | | | | | No. XIII. | | | | | |
| No. VI. | | | | | | No. XIV. | | | | | |
| No. VII. | | | | | | No. XV. | | | | | |
| No. VIII. | | | | | | No. XVI. | | | | | |
| No. IX. | | | | | | No. XVII. | | | | | |
| Car. forwd. | | | | | | Total. | | | | | |

Credit Treasurer with Cheques.

Debit each Relieving Officer with Cheques and Orders.

On the Report and recommendation of the Finance Committee the following Bills having been duly examined, and found to be correct, and in accordance with the several Orders, were directed to be paid, and Cheques for the several amounts were duly drawn on the Treasurer and Signed, namely:

1. Clothing Account. £ s. d.

| | | | |
|--|--|--|--|
| | | | |
| | | | |
| | | | |

Debit Clothing Account and Credit Treasurer with the several sums as above.

2. Establishment Account.

| | | | |
|--|--|--|--|
| | | | |
| | | | |
| | | | |

Debit Establishment Account and Credit Treasurer with the several sums as above.

The following Letters on matters arising under the Medical Charities Act or the Nuisances Removal and Diseases Prevention Acts, from the Poor Law Commissioners and others, were read by the Clerk, and directions given to answer them respectively, to the following effect (or Orders were made on them respectively as follows:—)

Read Letter from _____ dated _____ stating that _____

Govt UNION.

Population in 1861—20501

Present Net Annual Value, £43184.15.0

STATE of the WORKHOUSE for the Week ending Saturday, the 5. day of *Jan'y* 1867.

| Number of Inmates for which accommodation is provided. | No. that can be accommodated in each building. | Total No. in each building on the above date. | Able-bodied. | | Aged and Infirm persons, and adult persons, above 15 years of age, but not working. | | Boys and Girls above 9 and under 15 years of age. | | Children above 5 and under 9 years of age. | Children above 2 and under 5 years of age. | Infants under 2 years of age. | Total. | RETURN OF SICK AND LUNATICS. | | OBSERVATIONS. | |
|---|--|---|--------------|------|---|------|---|--------|--|--|-------------------------------|--------|---|--|---------------|--|
| | | | Males. | Fem. | Males. | Fem. | Boys. | Girls. | | | | | Number in Hospital on the above date. | No. of Lunatics and Idiots in Workhouse on the above date. | | |
| Workhouse, | 729 | 130 | | | | | | | | | | | | | | |
| Temporary Buildings, | | | | | | | | | | | | | | | | |
| Additional Workhouse, | 57 | 3 | | | | | | | | | | | | | | |
| Permanent Fever Hospital, | | | | | | | | | | | | | | | | |
| Fever Sheds, | | | | | | | | | | | | | | | | |
| Total, | 780 | 133 | | | | | | | | | | | | | | |
| Remaining on previous Saturday, as per last Return, | | | 3 | 44 | 11 | 13 | | | 12 | 20 | 27 | 130 | In Workhouse Hospital, } 52 In Fever Hospital, } 3 | In separate Wards, } In Wards with other inmates, } 2 | | |
| Admitted during the Week, | | | 3 | 1 | 1 | 1 | | | | | | 6 | | | | |
| TOTAL, | | | 6 | 45 | 12 | 14 | | | 12 | 20 | 27 | 136 | Total, | Total, | | |
| Discharged during the Week, | | | 1 | 1 | | | | | | | | 2 | | | | |
| Died, | | | | | | 1 | | | | | | 1 | | | | |
| Total Discharged and Dead, | | | 1 | 1 | | 1 | | | | | | 3 | | | | |
| REMAINING ON THE ABOVE DATE, | | | 5 | 44 | 12 | 13 | | | 12 | 20 | 27 | 133 | | | | |

RETURN of DESTITUTE PERSONS relieved out of the Workhouse, as by Relief Lists, for the last Week ended Saturday, the _____ day of _____ 186, authenticated and laid before the Board of Guardians at this Meeting.

| RELIEF DISTRICT. | Destitute Persons relieved out of the Workhouse under 10 Vict. c. 31, s. 1. | | Destitute Persons relieved out of the Workhouse, but not comprised in Sec. 1. | | Total relieved out of the Workhouse. | | RELIEF DISTRICT. | Destitute Persons relieved out of the Workhouse under 10 Vict. c. 31, s. 1. | | Destitute Persons relieved out of the Workhouse, but not comprised in Sec. 1. | | Total relieved out of the Workhouse. | |
|------------------|---|---|---|---|--------------------------------------|----------|------------------|---|---|---|---|--------------------------------------|----------|
| | Number of cases relieved. | Number of Persons, including Applicant and Family, dependent on him or her. | Number of cases relieved. | Number of Persons, including Applicant and Family, dependent on him or her. | Cases. | Persons. | | Number of cases relieved. | Number of Persons, including Applicant and Family, dependent on him or her. | Number of cases relieved. | Number of Persons, including Applicant and Family, dependent on him or her. | Cases. | Persons. |
| No. I. | | | | | | | Bt. forwd. | | | | | | |
| No. II. | | | | | | | No. X. | | | | | | |
| No. III. | | | | | | | No. XI. | | | | | | |
| No. IV. | | | | | | | No. XII. | | | | | | |
| No. V. | | | | | | | No. XIII. | | | | | | |
| No. VI. | | | | | | | No. XIV. | | | | | | |
| No. VII. | | | | | | | No. XV. | | | | | | |
| No. VIII. | | | | | | | No. XVI. | | | | | | |
| No. IX. | | | | | | | No. XVII. | | | | | | |
| Car. forwd. | | | | | | | TOTAL - | | | | | | |

COPY of MINUTES of Proceedings of the Board of Guardians, at a Meeting held on the 8 day of *Jan'y* 1867.

PRESENT: In the Chair, *Honble G S Gough*
Other Guardians:—

*D^r Mulville Henry Blaquiore Pat^r Shelman
M^r Staunton In^r Broderick Rich^r Molony
In^r Geoghegan W^m Geoghegan*

(Signed,)

Clerk of the Union.

The Workhouse Register was produced, examined, and authenticated, from No. 4777 to No. 5222 both inclusive, by the signature of the Chairman, and countersignature of the Clerk.

The Out-door Relief Register was produced, examined, and authenticated from No. _____ to No. _____ inclusive, by the signature of the Chairman and countersignature of the Clerk.

The Clerk's Report on the execution of Orders previously made by the Board was read to the following effect:

The Ledger was produced by the Clerk, posted up to the last day of Meeting, with the proper Debits and Credits, as ordered on that day.

The Treasurer's Book of Receipts and Payments was produced, by which it appeared that there had been received during the week

£ " : " : "
£ 94 : 7 : 2

And that the Balance on the Account favor of the Guardians was, £ 14 : 16 :

The Book was signed by the Chairman.

The Weekly balance-sheets of the several Collectors were laid before the Board, their accuracy having been first ascertained and authenticated by the Clerk.

The Lodgments made of Rates collected in the several Electoral Divisions appear to have been as follows:—

| Name of each Collector. | Electoral Divisions arranged in Collectors' Districts | Collected and Lodged. | | | Total. | | | Remaining. | | | Total. | | | | |
|-------------------------|---|-----------------------|----|----|--------|----|-----|------------|----|----|--------|----|------|----|---|
| | | £ | s. | d. | £ | s. | d. | £ | s. | d. | £ | s. | d. | | |
| Thos Hardiman | Ardamullivan | | | | | | | 87 | | 4 | | | | | |
| | Ballycahan | | | | | | | 62 | 15 | 5 | | | | | |
| | Beagh | | | | | | | 107 | 17 | 1 | | | | | |
| | Brumahou | | | | | | | 39 | 3 | 8 | | | | | |
| | Cahernore | | | | | | | 99 | 11 | 9 | | | | | |
| | Cappard | | | | | | | 38 | 19 | 9 | | | | | |
| | Dorris | | | | | | | 119 | 6 | 9 | | | | | |
| | Gort | | | | | | | 353 | 9 | 3 | | | | | |
| | Kilbeacanty | | | | | | | 43 | 15 | 6 | | | | | |
| | Killenny | | | | | | | 80 | 5 | 4 | | | | | |
| | Killinstown | | | | | | | 128 | 16 | 2 | | | | | |
| Kilthomas | | | | | | | 41 | 17 | | | | | | | |
| Kinvara | | | | | | | 219 | 1 | 4 | | | | | | |
| | | | | | | | | | | | | | 1422 | 2 | 4 |
| Michl Taylor | Ardahan | | | | | | | 60 | | 8 | | | | | |
| | Castle Taylor | | | | | | | 65 | 14 | 3 | | | | | |
| | Drumacor | | | | | | | 122 | | | | | | | |
| | Killeely | | | | | | | 64 | 6 | 2 | | | | | |
| | Killeenavara | | | | | | | 69 | 18 | 10 | | | | | |
| | Rahasane | | | | | | | 52 | 6 | 10 | | | | | |
| | Shehanagh | | | | | | | 95 | 1 | | | | | | |
| | | | | | | | | | | | | | 529 | 7 | 9 |
| | Total | | | | | | | | | | | | 1951 | 10 | 1 |

NOTE.—A total is to be inserted in Red Ink at the foot of each Collector's District, as well as for the entire Union. Debit the Treasurer and Credit the several Electoral Divisions with the respective amounts lodged.

The Clerk's Account of petty Disbursements made by him since last Meeting, amounting to £ was produced and passed.

The following Books were exhibited by the Clerk, he having first ascertained the accuracy of the entries made therein by the Master of the Workhouse, and authenticated the same by his Signature:

1. The Weekly Relief List and Abstract.
2. The Provision Check Account.
3. The Provision Receipt and Consumption Account.

By which it appeared that the Cost of Provisions and Necessaries received during the week was, £ 15. 14s. 5 d.

Debit Provision Account, and Credit Invoice Account.

The Cost of Provisions and Necessaries consumed was . . . £ 19 : 14 : 7

Debit Maintenance Account, and Credit Provision Account.

And the general average Cost of an Inmate for the week was : 2 : 3

Average Cost in Infirmary, : 3 : .

Average Cost in Fever Hospital, : 3 : 11

The Master's estimate of Provisions and Necessaries required for the ensuing week was examined, and orders were duly made for the several articles specified, namely:

- 632 lb. of Bread
- 48 lb. of Meat
- 400 q^t of Milk
- 7 lb. of Tea
- 28 lb. of Sugar
- 5 lb. of Rice
- 1 lb. of Pepper
- 3 p^t of Whiskey

The following Books were also produced by the Clerk, their accuracy having been previously ascertained by him, and authenticated by his Signature:—

1. The several Clothing Accounts.
2. The Medical Officers' Books.

The Out-door Relief Lists and Weekly Receipt and Expenditure Books of the several Relieving Officers were then produced by the Clerk, their accuracy having been previously ascertained by him, and authenticated by his signature.

The Abstract of the Out-door Relief Lists was also produced by the Clerk, having been duly entered up by him for the last week ended Saturday, the day of 186, whereby it appeared that in that week the Total Expenditure in Out-door Relief was

| | £ | s. | d. |
|-------------------------|---|----|----|
| In money, | - | - | - |
| In kind, | - | - | - |
| Total, | - | - | - |

Credit each Relieving Officer, as per Receipt and Expenditure Book.

The requirements of each Relieving Officer for the ensuing week having been duly considered and estimated by the Board, Cheques on the Treasurer and Orders on Contractors were duly signed and delivered to each of them, of the following amounts and value, respectively:

| RELIEF DISTRICT. | Name of Relieving Officer. | By Cheque on Treasurer. | | By Order on Contractors. | | RELIEF DISTRICT. | Name of Relieving Officer. | By Cheque on Treasurer. | | By Order on Contractors. | |
|------------------|----------------------------|-------------------------|-------|--------------------------|----------------|------------------|----------------------------|-------------------------|-------|--------------------------|----------------|
| | | £ | s. d. | Article and quantity. | Value. £ s. d. | | | £ | s. d. | Article and quantity. | Value. £ s. d. |
| No. I. | | | | | | Bt. forwd. | | | | | |
| No. II. | | | | | | No. X. | | | | | |
| No. III. | | | | | | No. XI. | | | | | |
| No. IV. | | | | | | No. XII. | | | | | |
| No. V. | | | | | | No. XIII. | | | | | |
| No. VI. | | | | | | No. XIV. | | | | | |
| No. VII. | | | | | | No. XV. | | | | | |
| No. VIII. | | | | | | No. XVI. | | | | | |
| No. IX. | | | | | | No. XVII. | | | | | |
| Car. forwd. | | | | | | Total. | | | | | |

Credit Treasurer with Cheques.

Debit each Relieving Officer with Cheques and Orders.

On the Report and recommendation of the Finance Committee the following Bills having been duly examined, and found to be correct, and in accordance with the several Orders, were directed to be paid, and Cheques for the several amounts were duly drawn on the Treasurer and Signed, namely:

1. Clothing Account.

Wicht. Mullins for flannel

| £ | s. | d. |
|---|----|----|
| 2 | 9 | 10 |

Debit Clothing Account and Credit Treasurer with the several sums as above.

2. Establishment Account.

James Hart carpenter, work
Martin Nagle for lime
W^m J Evans carriage of parcels per Rail

| | | |
|---|----|---|
| 1 | 5 | |
| 1 | 10 | |
| 4 | 19 | 2 |

Debit Establishment Account and Credit Treasurer with the several sums as above.

The following Orders of the Poor Law Commissioners were laid before the Board, and directions given thereon as follows:

The following Letters from the Poor Law Commissioners and others were read by the Clerk, and directions given to answer them respectively to the following effect (or Orders made on them respectively as follows):

Letter from Poor Law Commissioners No 25768, 22^d December 1866, in reference to their Circular of the 5th December, regarding the permanent employment of Sanitary Inspectors. —

The Guardians have not removed their Sanitary Inspectors, and intend to continue them so long as their services are required. —

Letter from same No 26624, 28th December 1866, regarding the appointment of an Apothecary for the Workhouse, and in reference thereto, the Commissioners state that they cannot consent to the reappointment of Mr Gill, that as the Board of Guardians appear to be unable to obtain the services of an Apothecary without augmenting the Salary beyond what they think proper, there seems to be no alternative but to assign the performance of the duties of that office to the Medical Officer of the Workhouse, and the Commissioners request the subject may receive the further consideration of the Guardians. —

Resolved that in reference to the foregoing we are much surprized that the necessity for the services of an Apothecary to the Workhouse, (which has existed for the last twenty years) is now considered by the Commissioners to be unnecessary, with this arrangement we cannot agree, and we only repeat the opinion of former Boards, that an Amalgamation of the Offices of Medical Officer and Apothecary is incompatible and inconsistent with the duties of the former, as Medical Officer of the Workhouse Infirmary, the Fever Hospital, the Gort and Peterswell Dispensaries, and those under the Acts for Vaccination and Registry of Births, Deaths, &c. besides the numerous books to be kept, and his private practice which is considerable, as he keeps an Establishment for dispensing Medicines, & furthermore he is not a Registered or licenced Apothecary. —

We therefore respectfully state, that seeing the necessity of it, and for many reasons, we are determined that the Workhouse shall not be without the services of an Apothecary. —

We are informed that the Commissioners have reinstated a Medical Officer in a Dispensary adjoining this Union, and we believe that our Resolutions and applications have not been less courteous than those of the Committee of that Dispensary. —

We therefore still hope, the Commissioners will not force the Amalgamation alluded to, nor coerce us to increase the taxation of this Union, it being their general practice, to advise the utmost economy in the expenditure of the rates. —

Passed Unanimously except as follows

I protest against the resolution of the Board of this day calling on the Commissioners to reinstate Mr Gill to the office of Apothecary to Gort Workhouse

8 January 1867

Henry Blaquiere

M

The cases of provisional relief, and applications for relief were considered and decided on, as set forth in the Application and Report Books.

The number of Provisional Admissions to the Workhouse confirmed was - - - 19

Ditto disallowed - - - - - 5

The number of applicants admitted to the Workhouse was - - - - -

The number of cases of provisional Out-door relief was - - - - -

Do. do. in which relief was continued by the Guardians - - - - -

The number of other applicants in the Relieving Officer's Books relieved by order of the Guardians was - - - - -

The number of applicants for whom relief was not ordered - - - - -

The Bonds and other securities in force were laid before the Guardians by the Clerk, together with his Report thereon, as follows: (this on the second Meeting after the Annual Election in every year.)

Canaway Council Archives

The following Letters on matters arising under the Medical Charities Act or the Nuisances Removal and Diseases Prevention Acts, from the Poor Law Commissioners and others, were read by the Clerk, and directions given to answer them respectively, to the following effect (or Orders were made on them respectively as follows:—)

Read Letter from _____ dated _____ stating that _____

Galway County

(Signed)

Clerk of the Union.

UNION.

Population in 1861—20501

Present Net Annual Value, £43184.15.0

STATE of the WORKHOUSE for the Week ending Saturday, the 12 day of Jan'y 1867.

Table with columns: Number of inmates for which accommodation is provided, No. that can be accommodated in each building, Total No. in each building, Able-bodied (Males, Fem.), Aged and infirm persons, Boys and Girls above 9 and under 15 years of age, Children above 5 and under 9 years of age, Children above 2 and under 5 years of age, Infants under 2 years of age, RETURN OF SICK AND LUNATICS (Number in Hospital, No. of Lunatics and Idiots in Workhouse), OBSERVATIONS.

RETURN of DESTITUTE PERSONS relieved out of the Workhouse, as by Relief Lists, for the last Week ended Saturday, the _____ day of _____ 186, authenticated and laid before the Board of Guardians at this Meeting.

Table with columns: RELIEF DISTRICT, Destitute Persons relieved out of the Workhouse under 10 Vict. c. 31, s. 1. (Number of cases, Number of Persons), Destitute Persons relieved out of the Workhouse, but not comprised in Sec. 1. (Number of cases, Number of Persons), Total relieved out of the Workhouse. (Cases, Persons), RELIEF DISTRICT, Destitute Persons relieved out of the Workhouse under 10 Vict. c. 31, s. 1. (Number of cases, Number of Persons), Destitute Persons relieved out of the Workhouse, but not comprised in Sec. 1. (Number of cases, Number of Persons), Total relieved out of the Workhouse. (Cases, Persons).

COPY of MINUTES of Proceedings of the Board of Guardians, at a Meeting held on Tuesday the 15 day of January 1867.

PRESENT: In the Chair,

Mic'h: Staunton

Other Guardians:—

Mr. Bagot Richd Molony Mr Broderick

Mr Geoghegan Mr Nolan Mr Spelman Owen Sweeney

The Minutes of last Meeting were read and Signed.

The Workhouse Register was produced, examined, and authenticated, from No. 1 to No. 20, both inclusive, by the signature of the Chairman, and countersignature of the Clerk.

The Out-door Relief Register was produced, examined, and authenticated from No. to No. inclusive, by the signature of the Chairman and countersignature of the Clerk.

The Clerk's Report on the execution of Orders previously made by the Board was read to the following effect:

The Ledger was produced by the Clerk, posted up to the last day of Meeting, with the proper Debits and Credits, as ordered on that day.

The Treasurer's Book of Receipts and Payments was produced, by which it appeared that there had been received during the week £ 133 : 3 : 10

Paid during the week £ 36 : 16 : .

And that the Balance on the Account in favor of the Guardians was, £ 111 : 3 : 10

The Book was signed by the Chairman.

The Weekly Balance-sheets of the several Collectors were laid before the Board, their accuracy having been first ascertained and authenticated by the Clerk.

The Ledgments made of Rates collected in the several Electoral Divisions appear to have been as follows:—

| Name of each Collector. | Electoral Divisions arranged in Collectors' Districts | Collected and Lodged. | | | Total. | | | Remaining. | | | Total. | | |
|-------------------------|---|-----------------------|----|----|--------|----|-----|------------|----|----|--------|----|----|
| | | £ | s. | d. | £ | s. | d. | £ | s. | d. | £ | s. | d. |
| Thos Hardiman | Ardamullivan | 9 | 15 | 10 | | | | 77 | 4 | 6 | | | |
| | Ballycahalan | 2 | 4 | 1 | | | | 60 | 11 | 4 | | | |
| | Beagh | 5 | 18 | 5 | | | | 101 | 18 | 8 | | | |
| | Bunnahou | | 19 | 7 | | | | 38 | 4 | 1 | | | |
| | Coahemore | 6 | 10 | 8 | | | | 93 | 1 | 1 | | | |
| | Cappard | 1 | 12 | | | | | 37 | 7 | 9 | | | |
| | Doones | 9 | 2 | 11 | | | | 110 | 3 | 10 | | | |
| | Coat | 57 | 11 | | | | | 295 | 18 | 3 | | | |
| | Kilbeacanty | 5 | 18 | | | | | 38 | | 6 | | | |
| | Killinny | 3 | 11 | 4 | | | | 76 | 14 | | | | |
| | Killarton | | | | | | | 128 | 16 | 2 | | | |
| | Kilthomas | | | | | | | 41 | 17 | | | | |
| Kilwaha | | | | | | | 219 | 1 | 4 | | | | |
| | | | | | 103 | 3 | 10 | | | | 1318 | 18 | 6 |
| Michl Taylor | Ardrahan | 3 | 18 | 5 | | | | 56 | 2 | 3 | | | |
| | Castle Taylor | 4 | 7 | 1 | | | | 61 | 7 | 2 | | | |
| | Drumacorr | 9 | 3 | 4 | | | | 112 | 16 | 8 | | | |
| | Killeely | | | | | | | 64 | 6 | 2 | | | |
| | Killemarvan | 6 | 6 | 4 | | | | 63 | 12 | 6 | | | |
| | Kahasane | | | | | | | 52 | 6 | 10 | | | |
| | Kelhamagh | 6 | 4 | 10 | | | | 88 | 16 | 2 | | | |
| | | | | | 30 | | | | | | 499 | 7 | 9 |
| Total | | | | | 133 | 3 | 10 | | | | 1818 | 6 | 3 |

NOTE.—A total is to be inserted in Red Ink at the foot of each Collector's District, as well as for the entire Union.

Debit the Treasurer and Credit the several Electoral Divisions with the respective amounts lodged.

The Clerk's Account of petty Disbursements made by him since last Meeting, amounting to £ was produced and passed.

The following Books were exhibited by the Clerk, he having first ascertained the accuracy of the entries made therein by the Master of the Workhouse, and authenticated the same by his Signature:-

- 1. The Weekly Relief List and Abstract.
2. The Provision Check Account.
3. The Provision Receipt and Consumption Account.

By which it appeared that the Cost of Provisions and Necessaries received during the week was, £ 17. 18s. 0 d.

£ s. d.

Debit Provision Account, and Credit Invoice Account.

The Cost of Provisions and Necessaries consumed was . . . 20 : 14 : 1

Debit Maintenance Account, and Credit Provision Account.

And the general average Cost of an Inmate for the week was : 2 : 8

Average Cost in Infirmary, : 8 : .

Average Cost in Fever Hospital, : 4 : .

The Master's estimate of Provisions and Necessaries required for the ensuing week was examined, and orders were duly made for the several articles specified, namely:

- 620 lb. of Bread
49 lb. of Meat
1/2 Ton of Oatmeal
420 qts of Milk
112 lb. of Salt
6 lb. of Tea
28 lb. of Sugar
1 lb. of Pepper
5 pints of Whiskey

The following Books were also produced by the Clerk, their accuracy having been previously ascertained by him, and authenticated by his Signature:-

- 1. The several Clothing Accounts.
2. The Medical Officers' Books.

The Out-door Relief Lists and Weekly Receipt and Expenditure Books of the several Relieving Officers were then produced by the Clerk, their accuracy having been previously ascertained by him, and authenticated by his signature.

The Abstract of the Out-door Relief Lists was also produced by the Clerk, having been duly entered up by him for the last week ended Saturday, the . . . day of . . . 186 . . . whereby it appeared that in that week the Total Expenditure in Out-door Relief was

£ s. d.

Table with 3 columns: In money, In kind, Total. The table shows expenditure amounts in pounds, shillings, and pence.

Credit each Relieving Officer, as per Receipt and Expenditure Book.

The requirements of each Relieving Officer for the ensuing week having been duly considered and estimated by the Board, Cheques on the Treasurer and Orders on Contractors were duly signed and delivered to each of them, of the following amounts and value, respectively:

Table with 10 columns: RELIEF DISTRICT, Name of Relieving Officer, By Cheque on Treasurer (p.s.d.), By Order on Contractors (Article and quantity, Value in p.s.d.), and repeated columns for RELIEF DISTRICT, Name of Relieving Officer, By Cheque on Treasurer, and By Order on Contractors. Rows include No. I through No. XVII, Car. forwd., and Total.

Credit Treasurer with Cheques.

Debit each Relieving Officer with Cheques and Orders.

On the Report and recommendation of the Finance Committee the following Bills having been duly examined, and found to be correct, and in accordance with the several Orders, were directed to be paid, and Cheques for the several amounts were duly drawn on the Treasurer and Signed, namely:

1. Clothing Account. £ s. d.

Table with 3 columns: £, s., d. for the Clothing Account entry.

Debit Clothing Account and Credit Treasurer with the several sums as above.

2. Establishment Account.

Table with 3 columns: £, s., d. for the Establishment Account entry.

Debit Establishment Account and Credit Treasurer with the several sums as above.

3. Warehouse Invoice Account.

£ s. d.

| £ | s. | d. |
|---|----|----|
| | | |
| | | |
| | | |
| | | |
| | | |
| | | |
| | | |
| | | |
| | | |
| | | |
| | | |

Debit Warehouse Invoice Account and Credit Treasurer with the several sums as above.

Sundry
4. Out-door Relief Invoice Account.

£ s. d.

1st Broderick for milk to 29 Sept
Martin Kerin of coal

| £ | s. | d. |
|-----|----|----|
| 19 | 8 | |
| 100 | | |
| | | |
| | | |
| | | |
| | | |
| | | |
| | | |
| | | |
| | | |
| | | |
| | | |
| | | |
| | | |
| | | |
| | | |
| | | |
| | | |
| | | |
| | | |

Credit Treasurer and Debit Out-door Relief Invoice Account with the several sums as above.

*The Clerk's Report of Vaccination was read (this on the first meeting in every month) —
Number of successful cases.*

The Report of the Visiting Committee was read, and Orders were made thereon as follows:

The Reports of the Master and other Officers were read, and Orders made thereon as follows:—

The Master reported the Provision, received all good

Galway County Council Archives

The following Orders of the Poor Law Commissioners were laid before the Board, and directions given thereon as follows:

The following Letters from the Poor Law Commissioners and others were read by the Clerk, and directions given to answer them respectively to the following effect for Orders made on them respectively as follows:

Letter from Poor Law Commissioners N^o 26624 14th January 1867
on the subject of the dietary of the inmates of the Infirmary Ward,

Ordered to be referred to the Medical Officer

Letter from same N^o 940 14th January 1867. in reference to
the appointment of an Apothecary for the workhouse. -

Ordered to advertise for tenders for the office of Apothecary
at a salary of £40 per Annum to be considered this day fortnight

Galway County Council Archives

The cases of provisional relief, and applications for relief were considered and decided on, as set forth in the Application and Report Books.

The number of Provisional Admissions to the Workhouse confirmed was 11

Ditto disallowed - - - - -

The number of applicants admitted to the Workhouse was 1

The number of cases of provisional Out-door relief was - - - - -

Do. do. in which relief was continued by the Guardians - - - - -

The number of other applicants in the Relieving Officer's Books relieved by order of the Guardians was - - - - -

The number of applicants for whom relief was not ordered - - - - -

The Bonds and other securities in force were laid before the Guardians by the Clerk, together with his Report thereon, as follows: (this on the second Meeting after the Annual Election in every year.)

The Board accepted the tender of Mr. Pat. J. Mangan for supplying Bread at 7¹/₂ per 12 lb loaf, Wholemeal at 15 per Ton, and Indian Meal at 10.12.6 per Ton from the 23 Instant to 29 of September next. —

The Board accepted the Tender of Pat. Jegan Sailor for making and repairing Clothing as follows. —
Sack and trousers 1/10, top Coats 1/6
Waistcoat 6 and mending 3. —

29th Sept 67

Wm. J. Jegan
Chairman

The following Letters on matters arising under the Medical Charities Act or the Nuisances Removal and Diseases Prevention Acts, from the Poor Law Commissioners and others, were read by the Clerk, and directions given to answer them respectively, to the following effect (or Orders were made on them respectively as follows:)

Read Letter from _____ dated _____ stating that _____

Port UNION.

Population in 1861—20501

Present Net Annual Value, £43184.15.0

STATE of the WORKHOUSE for the Week ending Saturday, the 19 day of Jan^y 1866.

| Number of Inmates for which accommodation is provided. | No. that can be accommodated in each building. | Total No. in each building on the above date. | Able-bodied. | | Aged and infirm persons, and adult persons, above 15 years of age, but not working. | | Boys and Girls above 9 and under 15 years of age. | | Children above 5 and under 9 years of age. | Children above 2 and under 5 years of age. | Infants under 2 years of age. | Total. | RETURN OF SICK AND LUNATICS. | | OBSERVATIONS. | |
|---|--|---|--------------|------|---|------|---|--------|--|--|-------------------------------|--------|---------------------------------------|--|---------------|--|
| | | | Males. | Fem. | Males. | Fem. | Boys. | Girls. | | | | | Number in Hospital on the above date. | No. of Lunatics and Idiots in Workhouse on the above date. | | |
| Workhouse, | 729 | 137 | | | | | | | | | | | | | | |
| Temporary Buildings, | | | | | | | | | | | | | | | | |
| Additional Workhouse, | 57 | 6 | | | | | | | | | | | | | | |
| Permanent Fever Hospital, | | | | | | | | | | | | | | | | |
| Fever Sheds, | | | | | | | | | | | | | | | | |
| Total, | 780 | 143 | | | | | | | | | | | | | | |
| Remaining on previous Saturday, as per last Return, | | | 11 | 24 | 15 | 35 | 12 | 3 | 15 | 12 | 15 | 142 | In Work-house Hospital, 54 | In separate Wards with other Inmates, 2 | | |
| Admitted during the Week, | | | 2 | 1 | | 1 | | 1 | | | | 6 | | | | |
| TOTAL, | | | 13 | 25 | 15 | 36 | 12 | 4 | 15 | 12 | 15 | 148 | Total, 60 | Total, 2 | | |
| Discharged during the Week, | | | | 1 | | 1 | | | | | | 2 | | | | |
| Died, | | | | | | 2 | | | | | | 3 | | | | |
| Total Discharged and Dead, | | | | 1 | | 3 | | | | | | 5 | | | | |
| REMAINING ON THE ABOVE DATE, | | | 13 | 24 | 15 | 33 | 12 | 4 | 15 | 12 | 15 | 143 | | | | |

RETURN of DESTITUTE PERSONS relieved out of the Workhouse, as by Relief Lists, for the last Week ended Saturday, the _____ day of _____ 1866, authenticated and laid before the Board of Guardians at this Meeting.

| RELIEF DISTRICT. | Destitute Persons relieved out of the Workhouse under 10 Vict. c. 31, s. 1. | | Destitute Persons relieved out of the Workhouse, but not comprised in Sec. 1. | | Total relieved out of the Workhouse. | | RELIEF DISTRICT. | Destitute Persons relieved out of the Workhouse under 10 Vict. c. 31, s. 1. | | Destitute Persons relieved out of the Workhouse, but not comprised in Sec. 1. | | Total relieved out of the Workhouse. | |
|------------------|---|---|---|---|--------------------------------------|----------|------------------|---|---|---|---|--------------------------------------|----------|
| | Number of cases relieved. | Number of Persons, including Applicant and Family, dependent on him or her. | Number of cases relieved. | Number of Persons, including Applicant and Family, dependent on him or her. | Cases. | Persons. | | Number of cases relieved. | Number of Persons, including Applicant and Family, dependent on him or her. | Number of cases relieved. | Number of Persons, including Applicant and Family, dependent on him or her. | Cases. | Persons. |
| No. I. | | | | | | | Bt. forwd. | | | | | | |
| No. II. | | | | | | | No. X. | | | | | | |
| No. III. | | | | | | | No. XI. | | | | | | |
| No. IV. | | | | | | | No. XII. | | | | | | |
| No. V. | | | | | | | No. XIII. | | | | | | |
| No. VI. | | | | | | | No. XIV. | | | | | | |
| No. VII. | | | | | | | No. XV. | | | | | | |
| No. VIII. | | | | | | | No. XVI. | | | | | | |
| No. IX. | | | | | | | No. XVII. | | | | | | |
| Car. forwd. | | | | | | | TOTAL - | | | | | | |

COPY of MINUTES of Proceedings of the Board of Guardians, at a Meeting held on the _____ day of _____ 1866.

PRESENT: In the Chair,

Other Guardians:—

*No Meeting Tuesday 22^d Jan^y 1867
only two Guardians attended*

(Signed,)

Clerk of the Union.

The Workhouse Register was produced, examined, and authenticated, from No. _____ to No. _____, both inclusive, by the signature of the Chairman, and countersignature of the Clerk.

The Out-door Relief Register was produced, examined, and authenticated from No. _____ to No. _____, inclusive, by the signature of the Chairman and countersignature of the Clerk.

The Clerk's Report on the execution of Orders previously made by the Board was read to the following effect:

The Ledger was produced by the Clerk, posted up to the last day of Meeting, with the proper Debits and Credits, as ordered on that day.

The Treasurer's Book of Receipts and Payments was produced, by which it appeared that there had been received during the week

£ " : 5 : 7

Baid during the week, £ " : 19 : 8

And that the Balance on the Account in favor of the Guardians was, £ 92 : 1 : 5

The Book was signed by the Chairman.

The Weekly balance-sheets of the several Collectors were laid before the Board, their accuracy having been first ascertained and authenticated by the Clerk.

The Lodgments made of Rates collected in the several Electoral Divisions appear to have been as follows:—

| Name of each Collector. | Electoral Divisions arranged in Collectors' Districts | Collected and Lodged. | | | Total. | | | Remaining. | | | Total. | | | | | | |
|-------------------------|---|-----------------------|----|----|--------|----|----|------------|----|----|--------|----|------|----|----|------|---|
| | | £ | s. | d. | £ | s. | d. | £ | s. | d. | £ | s. | d. | | | | |
| Thos Hardiman | Ardamullivan | | | 57 | | | | 79 | 18 | 11 | | | | | | | |
| | Ballycahalan | | | | | | | 60 | 11 | 4 | | | | | | | |
| | Beagh | | | | | | | 101 | 18 | 8 | | | | | | | |
| | Belmahow | | | | | | | 38 | 4 | 1 | | | | | | | |
| | Cahernore | | | | | | | 93 | 1 | 1 | | | | | | | |
| | Cappaid | | | | | | | 37 | 7 | 9 | | | | | | | |
| | Doonies | | | | | | | 110 | 3 | 10 | | | | | | | |
| | Loft | | | | | | | 295 | 18 | 3 | | | | | | | |
| | Kilbeacastle | | | | | | | 38 | | 6 | | | | | | | |
| | Killinny | | | | | | | 76 | 14 | | | | | | | | |
| | Kiltartin | | | | | | | 125 | 16 | 2 | | | | | | | |
| | Kilthomas | | | | | | | 41 | 17 | | | | | | | | |
| | Kinwana | | | | | | | 219 | 1 | 4 | | | | | | | |
| | | | | | | | | | | | 57 | | 1318 | 12 | 11 | | |
| Michl Taylor | Ardrahan | | | | | | | 56 | 2 | 3 | | | | | | | |
| | Castle Taylor | | | | | | | 61 | 7 | 2 | | | | | | | |
| | Drumacoo | | | | | | | 112 | 16 | 8 | | | | | | | |
| | Killeely | | | | | | | 64 | 6 | 2 | | | | | | | |
| | Killeenavara | | | | | | | 63 | 12 | 6 | | | | | | | |
| | Kahasane | | | | | | | 52 | 6 | 10 | | | | | | | |
| | Stehauagh | | | | | | | 88 | 16 | 2 | | | | | | | |
| | | | | | | | | | | | | | 499 | 7 | 9 | | |
| | Total | | | | | | | | | | | | | 57 | | 1818 | 8 |

NOTE.—A total is to be inserted in Red Ink at the foot of each Collector's District, as well as for the entire Union. Debit the Treasurer and Credit the several Electoral Divisions with the respective amounts lodged.

The Clerk's Account of petty Disbursements made by him since last Meeting, amounting to £ was produced and passed.

The following Books were exhibited by the Clerk, he having first ascertained the accuracy of the entries made therein by the Master of the Workhouse, and authenticated the same by his Signature:

1. The Weekly Relief List and Abstract.
2. The Provision Check Account.
3. The Provision Receipt and Consumption Account.

By which it appeared that the Cost of Provisions and Necessaries received during the week was, £ 23. 2 s. 11 d.

£ s. d.

Debit Provision Account, and Credit Invoice Account.

The Cost of Provisions and Necessaries consumed was 21 : 10 : 6

Debit Maintenance Account, and Credit Provision Account.

And the general average Cost of an Inmate for the week was : 2 : 3

Average Cost in Infirmary, : 3 : .

Average Cost in Fever Hospital, : 4 : 2

The Master's estimate of Provisions and Necessaries required for the ensuing week was examined, and orders were duly made for the several articles specified, namely:



The following Books were also produced by the Clerk, their accuracy having been previously ascertained by him, and authenticated by his Signature:—

1. The several Clothing Accounts.
2. The Medical Officers' Books.

The Out-door Relief Lists and Weekly Receipt and Expenditure Books of the several Relieving Officers were then produced by the Clerk, their accuracy having been previously ascertained by him, and authenticated by his signature.

The Abstract of the Out-door Relief Lists was also produced by the Clerk, having been duly entered up by him for the last week ended Saturday, the day of 186 , whereby it appeared that in that week the Total Expenditure in Out-door Relief was

| | | | |
|-----------|---|----|----|
| | £ | s. | d. |
| In money, | - | - | - |
| In kind, | - | - | - |
| Total, | - | - | - |

Credit each Relieving Officer, as per Receipt and Expenditure Book.

The requirements of each Relieving Officer for the ensuing week having been duly considered and estimated by the Board, Cheques on the Treasurer and Orders on Contractors were duly signed and delivered to each of them, of the following amounts and value, respectively:

| RELIEF DISTRICT. | Name of Relieving Officer. | By Cheque on Treasurer. £ s. d. | By Order on Contractors. | | RELIEF DISTRICT. | Name of Relieving Officer. | By Cheque on Treasurer. £ s. d. | By Order on Contractors. | |
|------------------|----------------------------|------------------------------------|--------------------------|-------------------|------------------|----------------------------|------------------------------------|--------------------------|-------------------|
| | | | Article and quantity. | Value. £ s. d. | | | | Article and quantity. | Value. £ s. d. |
| No. I. | | | | | Bt. forwd. | | | | |
| No. II. | | | | | No. X. | | | | |
| No. III. | | | | | No. XI. | | | | |
| No. IV. | | | | | No. XII. | | | | |
| No. V. | | | | | No. XIII. | | | | |
| No. VI. | | | | | No. XIV. | | | | |
| No. VII. | | | | | No. XV. | | | | |
| No. VIII. | | | | | No. XVI. | | | | |
| No. IX. | | | | | No. XVII. | | | | |
| Car. forwd. | | | | | Total. | | | | |

Credit Treasurer with Cheques.

Debit each Relieving Officer with Cheques and Orders.

On the Report and recommendation of the Finance Committee the following Bills having been duly examined, and found to be correct, and in accordance with the several Orders, were directed to be paid, and Cheques for the several amounts were duly drawn on the Treasurer and Signed, namely:

| | | | |
|----------------------|---|----|----|
| 1. Clothing Account. | £ | s. | d. |
| | | | |
| | | | |
| | | | |
| | | | |

Debit Clothing Account and Credit Treasurer with the several sums as above.

2. Establishment Account.

| | | | |
|--|---|----|----|
| | £ | s. | d. |
| | | | |
| | | | |
| | | | |
| | | | |

Debit Establishment Account and Credit Treasurer with the several sums as above.

The following Letters on matters arising under the Medical Charities Act or the Nuisances Removal and Diseases Prevention Acts, from the Poor Law Commissioners and others, were read by the Clerk, and directions given to answer them respectively, to the following effect (or Orders were made on them respectively as follows:—)

Read Letter from _____ dated _____ stating that _____

(Signed,)

Clerk of the Union.

Port UNION.

Population in 1861— 20,501

Present Net Annual Value, £43184. 15. 0

STATE of the WORKHOUSE for the Week ending Saturday, the 26 day of Jan'y 1866.

Table with columns: Number of inmates for which accommodation is provided, No. that can be accommodated, Total No. in each building, Able-bodied (Males, Fem.), Aged and infirm persons, Boys and Girls above 9 and under 15 years of age, Children above 5 and under 9 years of age, Children above 2 and under 5 years of age, Infants under 2 years of age, RETURN OF SICK AND LUNATICS (Number in Hospital, No. of Lunatics and Idiots in Workhouse), OBSERVATIONS.

RETURN of DESTITUTE PERSONS relieved out of the Workhouse, as by Relief Lists, for the last Week ended Saturday, the _____ day of _____ 186, authenticated and laid before the Board of Guardians at this Meeting.

Table with columns: RELIEF DISTRICT, Destitute Persons relieved out of the Workhouse under 10 Vict. c. 31, s. 1. (Number of cases, Number of Persons), Destitute Persons relieved out of the Workhouse, but not comprised in Sec. 1. (Number of cases, Number of Persons), Total relieved out of the Workhouse (Cases, Persons), RELIEF DISTRICT, Destitute Persons relieved out of the Workhouse under 10 Vict. c. 31, s. 1. (Number of cases, Number of Persons), Destitute Persons relieved out of the Workhouse, but not comprised in Sec. 1. (Number of cases, Number of Persons), Total relieved out of the Workhouse (Cases, Persons).

COPY of MINUTES of Proceedings of the Board of Guardians, at a Meeting held on Tuesday the 29 day of January 1867.

PRESENT: In the Chair, Honble G. Slough
Other Guardians:— Wm H Gregory, Dr Mulville, Arthur Alexander, Pat. Spelman, Rich. Molony, Mich. Staunton, Martin Coen, John Broderick, Wm. Geoghegan, In. Geoghegan, Pat. Milan, Owen Sweeney.

The Minutes of last Meeting were read and Signed.

The Warehouse Register was produced, examined, and authenticated, from No. 21 to No. 37, both inclusive, by the signature of the Chairman, and countersignature of the Clerk.

The Out-door Relief Register was produced, examined, and authenticated from No. to No. inclusive, by the signature of the Chairman and countersignature of the Clerk.

The Clerk's Report on the execution of Orders previously made by the Board was read to the following effect:

The Ledger was produced by the Clerk, posted up to the last day of Meeting, with the proper Debits and Credits, as ordered on that day.

The Treasurer's Book of Receipts and Payments was produced, by which it appeared that there had been received during the week £ 19 : : :

Baid during the week £ 13 : : 8

And that the Balance on the Account in favor of the Guardians was, £ 98 : : 9

The Book was signed by the Chairman.

The Weekly balance-sheets of the several Collectors were laid before the Board, their accuracy having been first ascertained and authenticated by the Clerk.

The Lodgments made of Rates collected in the several Electoral Divisions appear to have been as follows:—

| Name of each Collector. | Electoral Divisions arranged in Collectors' Districts | Collected and Lodged. | | | Total. | | | Remaining. | | | Total. | | |
|----------------------------|---|-----------------------|----|----|--------|----|-----|------------|----|----|--------|----|----|
| | | £ | s. | d. | £ | s. | d. | £ | s. | d. | £ | s. | d. |
| Thos ^d Hardiman | Ardamullivan | | | | | | | 76 | 18 | 11 | | | |
| | Ballycahalan | | | | | | | 60 | 11 | 4 | | | |
| | Beagh | | | | | | | 101 | 18 | 8 | | | |
| | Bunnahou | | | | | | | 38 | 4 | 1 | | | |
| | Cahernore | | | | | | | 98 | 1 | 1 | | | |
| | Cappard | | | | | | | 37 | 7 | 9 | | | |
| | Dorris | | | | | | | 110 | 3 | 10 | | | |
| | Gort | | | | | | | 295 | 18 | 3 | | | |
| | Kilbeacanty | | | | | | | 38 | | 6 | | | |
| | Killinny | | | | | | | 76 | 14 | | | | |
| | Kiltartan | | | | | | | 128 | 16 | 2 | | | |
| | Killthomas | | | | | | | 41 | 17 | | | | |
| Kinnana | | | | | | | 219 | 1 | 4 | | | | |
| | | | | | | | | | | | 1318 | 12 | 11 |
| Mich ^e Taylor | Ardrahan | 2 | 3 | 4 | | | | 53 | 18 | 11 | | | |
| | Castle Taylor | | | | | | | 61 | 7 | 2 | | | |
| | Drumacoo | 1 | 12 | 5 | | | | 111 | 4 | 3 | | | |
| | Killeely | 10 | 8 | 7 | | | | 53 | 17 | 7 | | | |
| | Killenavara | | | | | | | 63 | 12 | 6 | | | |
| | Kilhasane | | | | | | | 52 | 6 | 10 | | | |
| | Keenanagh | 4 | 15 | 8 | | | | 84 | | 6 | | | |
| | | | | | | | 19 | | | | 480 | 7 | 9 |
| Total | | | | | | | 19 | | | | 1799 | | 8 |

NOTE.—A total is to be inserted in Red Ink at the foot of each Collector's District, as well as for the entire Union. Debit the Treasurer and Credit the several Electoral Divisions with the respective amounts lodged.

The Clerk's Account of petty Disbursements made by him since last Meeting, amounting to £ was produced and passed.

The following Books were exhibited by the Clerk, he having first ascertained the accuracy of the entries made therein by the Master of the Workhouse, and authenticated the same by his Signature:

1. The Weekly Relief List and Abstract.
2. The Provision Check Account.
3. The Provision Receipt and Consumption Account.

By which it appeared that the Cost of Provisions and Necessaries received during the week was, £ 25. 12s. 7d.

£ s. d.

Debit Provision Account, and Credit Invoice Account.

The Cost of Provisions and Necessaries consumed was . . . 21 : 3 : 4

Debit Maintenance Account, and Credit Provision Account.

And the general average Cost of an Inmate for the week was : 2 : 3

Average Cost in Infirmary, : 3 : 9

Average Cost in Fever Hospital, : 3 : 11

The Master's estimate of Provisions and Necessaries required for the ensuing week was examined, and orders were duly made for the several articles specified, namely:

- 652 lbs of Bread
- 53 lbs of Meat
- 450 q^{ts} of Milk
- 6 lbs of Tea
- 28 lbs of Sugar
- 56 lbs of Rice
- 1 lb of Pepper
- 3 p^{ts} of Whiskey

The following Books were also produced by the Clerk, their accuracy having been previously ascertained by him, and authenticated by his Signature:—

1. The several Clothing Accounts.
2. The Medical Officers' Books.

The Out-door Relief Lists and Weekly Receipt and Expenditure Books of the several Relieving Officers were then produced by the Clerk, their accuracy having been previously ascertained by him, and authenticated by his signature.

The Abstract of the Out-door Relief Lists was also produced by the Clerk, having been duly entered up by him for the last week ended Saturday, the day of 186, whereby it appeared that in that week the Total Expenditure in Out-door Relief was

| | | | |
|-----------|---|----|-----|
| | £ | s. | d. |
| In money, | - | - | - |
| In kind, | - | - | - |
| Total, | - | - | - £ |

Credit each Relieving Officer, as per Receipt and Expenditure Book.

The requirements of each Relieving Officer for the ensuing week having been duly considered and estimated by the Board, Cheques on the Treasurer and Orders on Contractors were duly signed and delivered to each of them, of the following amounts and value, respectively:

| RELIEF DISTRICT. | Name of Relieving Officer. | By Cheque on Treasurer. | | By Order on Contractors. | | RELIEF DISTRICT. | Name of Relieving Officer. | By Cheque on Treasurer. | | By Order on Contractors. | |
|------------------|----------------------------|-------------------------|-------|--------------------------|----------------|------------------|----------------------------|-------------------------|-------|--------------------------|----------------|
| | | £ | s. d. | Article and quantity. | Value. £ s. d. | | | £ | s. d. | Article and quantity. | Value. £ s. d. |
| No. I. | | | | | | Bt. forwd. | | | | | |
| No. II. | | | | | | No. X. | | | | | |
| No. III. | | | | | | No. XI. | | | | | |
| No. IV. | | | | | | No. XII. | | | | | |
| No. V. | | | | | | No. XIII. | | | | | |
| No. VI. | | | | | | No. XIV. | | | | | |
| No. VII. | | | | | | No. XV. | | | | | |
| No. VIII. | | | | | | No. XVI. | | | | | |
| No. IX. | | | | | | No. XVII. | | | | | |
| Car. forwd. | | | | | | Total, | | | | | |

Credit Treasurer with Cheques.

Debit each Relieving Officer with Cheques and Orders.

On the Report and recommendation of the Finance Committee the following Bills having been duly examined, and found to be correct, and in accordance with the several Orders, were directed to be paid, and Cheques for the several amounts were duly drawn on the Treasurer and Signed, namely:

| | | | |
|----------------------|---|----|----|
| 1. Clothing Account. | £ | s. | d. |
| | | | |
| | | | |
| | | | |
| | | | |
| | | | |
| | | | |
| | | | |
| | | | |
| | | | |

Debit Clothing Account and Credit Treasurer with the several sums as above.

2. Establishment Account.

| | | | |
|---------------------------------|---|----|----|
| Martin Donohue Porters clothing | £ | s. | d. |
| | 2 | 17 | 6 |
| | | | |
| | | | |
| | | | |
| | | | |
| | | | |
| | | | |
| | | | |
| | | | |

Debit Establishment Account and Credit Treasurer with the several sums as above.

3. Warehouse Invoice Account.

| | £ | s. | d. |
|--|----|----|----|
| Many Molony Groceries to 30 Decr. | 26 | 13 | 8 |
| Walter Plunket for Oatmeal to 15 Inst. | 13 | 5 | . |

Debit Warehouse Invoice Account and Credit Treasurer with the several sums as above.

4. Sundry Out-door Relief Invoice Account.

| | £ | s. | d. |
|-------------------------------------|---|----|----|
| Pat. Burke Sanitary Officer Cashire | 3 | . | . |
| ACKNOWLED Registrars fees | 4 | 9 | 6 |

Credit Treasurer and Debit Out-door Relief Invoice Account with the several sums as above.

The Clerk's Report of Vaccination was read — (this on the first meeting in every month) — Number of successful cases.

The Report of the Visiting Committee was read, and Orders were made thereon as follows:

The Reports of the Master and other Officers were read, and Orders made thereon as follows:—

The Master reported the Provision, all good
 The Medical officer reported on the Dietary of Infirms as follows. —
 My attention having been requested at your last meeting to a letter from the Poor Law Commissioners relative to the establishment of a new scale of dietary for the infirm class, and asking to be informed if I had reported on the subject. —

I have to say in reply that I was present at your meeting when the Commissioners letter of the 26 of November was discussed, and the feeling of the Board then appeared so decidedly adverse to the proposed change, that I did not take any further steps in the matter, but contented myself with seeing that any of the class in question whose health at all required it, should be placed on the Hospital dietary. — of the infirm inmates there are now 22 on the Hospital diet, the few that remain tho' classed under that head by reason of certain Infirmities which however do not seriously affect their general health, or prevent them in my opinion from using the ordinary diet of the House. —

With regard to the dissatisfaction which the Commissioners suppose may exist amongst the ~~the~~ portion of the infirm class, I must

The following Orders of the Poor Law Commissioners were laid before the Board, and directions given thereon as follows:

that I have not observed it, as they always find me most ready to place them on the Hospital dietary when any just cause exists. —

In conclusion I beg to say that I am quite prepared to carry out any instructions on the subject that the Poor Law Commissioners or Guardians may direct. —

Yam Gentlemen
Your faithful servant
A. Kelly Nolan
Med. Officer

The following Letters from the Poor Law Commissioners and others were read by the Clerk, and directions given to answer them respectively to the following effect (or Orders made on them respectively as follows):

The cases of provisional relief, and applications for relief were considered and decided on, as set forth in the Application and Report Books.

The number of Provisional Admissions to the Workhouse confirmed was - - - - - 10

Ditto disallowed - - - - - "

The number of applicants admitted to the Workhouse was - - - - - 3

The number of cases of provisional Out-door relief was - - - - -

Do. do. in which relief was continued by the Guardians - - - - -

The number of other applicants in the Relieving Officer's Books relieved by order of the Guardians was - - - - -

The number of applicants for whom relief was not ordered - - - - -

The Bonds and other securities in force were laid before the Guardians by the Clerk, together with his Report thereon, as follows: (this on the second Meeting after the Annual Election in every year.)

I hereby give notice that I will on this day fortnight (or some person on my behalf) move that the chargeability of Mary Hyman be removed from the Electoral division of Stehanagh to the Union at large. dated this 29th day of January 1867
John Geoghegan

There being no tender for the office of apothecary this day, it is the unanimous wish of this Board comprising the chairman vice and deputy vice chairmen, in all thirteen Guardians, that Mr. Gill should get even a probationary trial, and Mr. Gregory is requested to wait on the Poor Law Commissioners on the subject.

J. J. O'Connell
Chairman