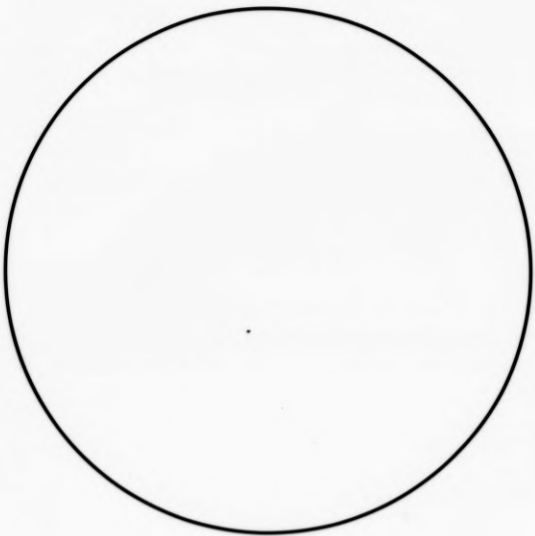


START OF ROLL

Galway County Council Archives

PLANETARY MICRO COPY TEST CHART (11 X 14")
PM - PMC



POINT SIZE

4 Z35lg 1yb7 Y0r8j Zhdv
6 Hg47j W9pa9 A7a7q Ge92
8 Su1xi 33q7n Oelvf 4ef8k

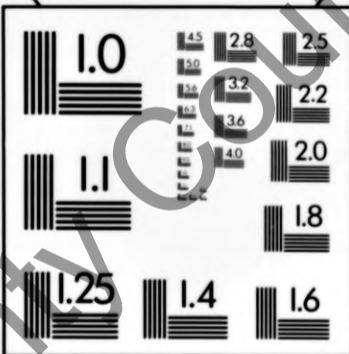
10 2xbiy Gmn0c
Y5a5o E1t9g
12 7n34a K2b8t
D6fmh 9ss9d
14 Wcuzl L1cdg
6Y3sl Okjdg

FUTURA

NEWS GOTHIC
14 K2b8t Okjdg
4ef8k Gmn0c
12 Zlo6x Ge92
7n34a 6Y3sl

10 Y0r8j A7a7q
Oelvf 2xbiy
8 9ss9d L1cdg
33q7n E1t9g
6 Z35lg Hg47j Su1xi Y5a5
4 D6fmh Wcuzl 1yb7 Y0r8j Zhdv

POINT SIZE



4 JF9R NZ8U9 BKUC ZLUC ZC8R
6 IZC6B USM7P PNGSB OIKOG
8 XMBBO HWEKH XYAHQ SIDDS
10 VILNU MZHSF XMBBO HWEKH
12 6Jfjm Zm79a 3s43l iskrY I26FRKM EB7AU FUDWM B00NF
14 Oz7h9 B5e1P Wo8nk 8tizx I4C9E83 B18AJ Z7QYI OKJDG

SERIF (BASKERVILLE) SIZE SANS SERIF (MICROFONT)

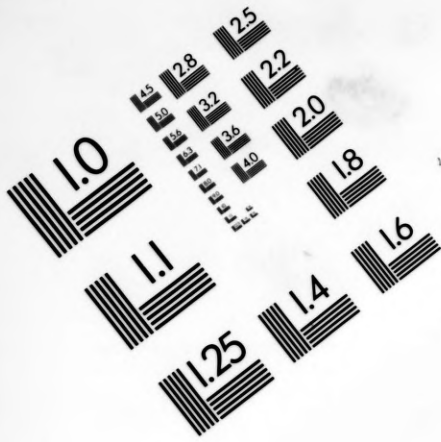
150mm

9"

PRECISIONSM RESOLUTION TARGETS

The Microfilm Shop

Tel: (024) 7638 3998
Fax: (024) 7638 2319

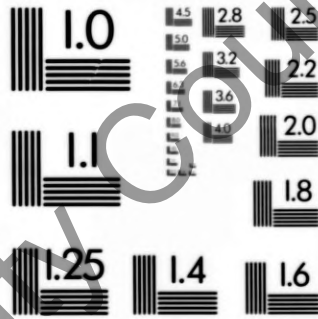


PRECISIONSM RESOLUTION TARGETS

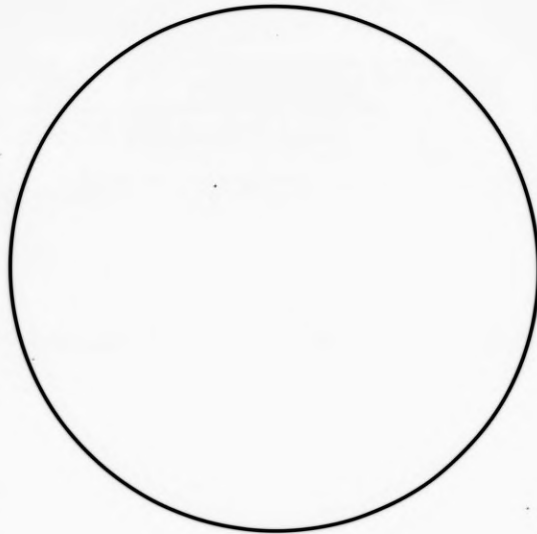
The Microfilm Shop

Tel: (024) 7638 3998

Fax: (024) 7638 2319



PM-PLN 11"x14"
PLANETARY PHOTOGRAPHIC



150mm

6"

POINT SIZE

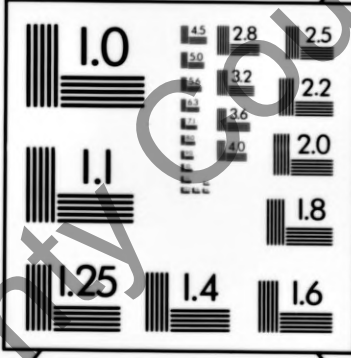
4 Z35lg 1yb7 Y0h8 Z1dk
6 Hq47j W9pa9 A7o7q Ge92
8 Su1xi 33q7n Oelvf 4ef8k

10 2xbiy Gmn0c
Y5a5o E1f9g
12 7n34a K2b8t
D6fmh 9ss9d
14 Wcuzl L1cdg
6Y3sl Okjdg
FUTURA

NEWS GOTHIC
14 K2b8t Okjdg
4ef8k Gmn0c
12 Z1o6x Ge92
7n34a 6Y3sl

10 Y0r8j A7o7q
Oelvf 2xbiy
8 9ss9d L1cdg
33q7n E1f9g
6 Z35lg Hq47j Su1xi Y5a5
4 D6fmh Wcuzl 1yb7 W9pa9

POINT SIZE



4 Jfno Anhd O2h8 Gd4c B4efP
6 8t1zx Wobnk C6Jfm Zm79a
8 T1whz zh9oz bunYr Dm5z5
10 KP7Yc Rho9t Umkh9 Eeafd
12 C6Jfm Zm79a 3s43l iskrY I26FRKM EB7AU FUDWM B00NF
14 Oz7h9B5eIP Wo8nk 8t izx I4C9E83 BI8AJ Z7QYI OKJDG

SERIF (BASKERVILLE) SIZE SANS SERIF (MICROFONT) POINT

PRECISIONSM RESOLUTION TARGETS

The Microfilm Shop
Telephone: (0203) 383998/381196
Fax: (0203) 382319

12X

Galway County Council Archives

**THE
FOLLOWING
FILM HAS TIGHT
BINDINGS**

Galway County Council Archives



G01/12/

GORT POOR LAW UNION – SUMMARY LIST

**Gort Poor Law Union
Archive Collection
Summary List**

G01/12/

© Galway County Council

All Rights Reserved.

No part of this film may be reproduced or transmitted
in any form without the permission of
Galway County Council

Microfilm first produced 2008

**Board of Guardian Minutes**

| | |
|------------|---|
| G01/12/1-2 | Missing |
| G01/12/3 | 8 June 1844 - 5 July 1845 |
| G01/12/4 | Missing See Rough Minutes GS01/12/109 |
| G01/12/5 | 3 April 1846 – 26 March 1847 |
| G01/12/6 | 2 April 1847 – 28 January 1848 |
| G01/12/7 | 4 February 1848 – 1 December 1848 |
| G01/12/8 | Missing See Rough Minutes G01/12/113 |
| G01/12/9 | 19 October 1849 – 30 July 1850 |
| G01/12/10 | 6 August 1850 - 24 March 1851 |
| G01/12/11 | 31 March 1851 - 20 October 1851 |
| G01/12/12 | Missing See Rough Minutes G01/12/117 |
| G01/12/13 | 25 May 1852 – 22 November 1852 |
| G01/12/14 | November 1852 – 9 May 1853 |
| G01/12/15 | 16 May 1853 – 24 October 1853 |
| G01/12/16 | 31 October 1853 – 3 April 1854, CLOSED due to fragile physical condition |
| G01/12/17 | 17 April 1854 – 9 October 1854 |
| G01/12/18 | 16 October 1854 – 9 April 1855 |
| G01/12/19 | 16 April 1855 - 4 October 1855 |
| G01/12/20 | 18 October 1855 - 27 March 1856 |
| G01/12/21 | 29 March 1856 - 7 August 1856 - CLOSED due to fragile physical condition |
| G01/12/22 | 2 October 1856 – 21 March 1857 |
| G01/12/23 | 2 April 1857 – 24 September 1857 |
| G01/12/24 | 8 October 1857 – 1 March 1858 |
| G01/12/25 | 6 April 1858 – 28 September 1858 |
| G01/12/26 | 2 October 1858 – 29 March 1859 |
| G01/12/27 | 5 April 1859 – 17 September 1859 - CLOSED due to fragile physical condition |
| G01/12/28 | Missing See Rough Minutes G01/12/134 |
| G01/12/29 | 27 March 1860 – 25 September 1860 |
| G01/12/30 | 2 October 1860 – 24 September 1861 - CLOSED due to fragile physical condition |
| G01/12/31 | 1 October 1861 – 25 March 1862 |
| G01/12/32 | 1 April 1862 – 23 September 1862 |



| | |
|-----------|---|
| G01/12/33 | 30 September 1862 – 24 March 1863 |
| G01/12/34 | 31 March 1863 – 22 September 1863 |
| G01/12/35 | 29 September 1863 – 22 March 1864 |
| G01/12/36 | 29 March 1864 – 17 September 1864 |
| G01/12/37 | Missing |
| G01/12/38 | 28 March 1865 – 19 September 1865 |
| G01/12/39 | 26 September 1865 – 20 March 1866 |
| G01/12/40 | 27 March 1866 – 18 September 1866 |
| G01/12/41 | 25 September 1866 – 19 March 1867 |
| G01/12/42 | 26 March 1867 – 17 September 1867 - Condition: Fair |
| G01/12/43 | 21 September 1867 – 14 March 1868 |
| G01/12/44 | 21 March 1868 – 12 September 1868 |
| G01/12/45 | 19 September 1868 – 13 March 1869 |
| G01/12/46 | 28 March 1869 – 11 September 1869 |
| G01/12/47 | 18 September 1869 – 26 February 1870 (with gaps) |
| G01/12/48 | 19 March 1870 – 10 September 1870 |
| G01/12/49 | 17 SEPTEMBER 1870 – 11 MARCH 1871 |
| G01/12/50 | 8 MARCH 1871 – 9 SEPTEMBER 1871 |
| G01/12/51 | 11 November 1871 – 9 March 1872 |
| G01/12/52 | 16 March 1872 – 7 September 1872 |
| G01/12/53 | 14 SEPTEMBER 1872 – 8 MARCH 1873 |
| G01/12/54 | 15 March 1873 – 26 July 1873 |
| G01/12/56 | 14 March 1874 – 19 September 1874 |
| G01/12/57 | 26 September 1874 – 3 April 1875 |
| G01/12/58 | 10 April 1875 – 11 October 1875 |
| G01/12/59 | 23 October 1875 – 6 May 1876 |
| G01/12/60 | Missing |
| G01/12/61 | 26 November 1876 – 2 June 1877 |
| G01/12/62 | 2 June 1877 – 29 December 1877 |
| G01/12/63 | 5 January 1878 – 13 July 1878 |
| G01/12/64 | 20 July 1878 – 8 February 1879 |
| G01/12/65 | 15 February 1879 – 6 September 1879 |



| | |
|-----------|---|
| G01/12/66 | 13 September 1879 – 20 March 1880 |
| G01/12/67 | 27 March 1880 – 2 October 1880 |
| G01/12/68 | 9 October 1880 – 9 April 1881 |
| G01/12/69 | 16 April 1881 – 22 October 1881 |
| G01/12/70 | 29 October 1881 – 6 May 1882 |
| G01/12/71 | 13 May 1882 – 18 November 1882 - CLOSED due to fragile physical condition |
| G01/12/72 | 25 November 1882 – 2 June 1883 |
| G01/12/73 | 9 June 1883 – 8 December 1883 |
| G01/12/74 | 15 December 1883 – 14 June 1884 |
| G01/12/75 | 21 June 1884 – 20 December 1884 - CLOSED – due to fragile condition |
| G01/12/76 | 2 January 1885 – 4 July 1885 |
| G01/12/77 | 11 July 1885 – 2 January 1886 |
| G01/12/78 | 17 July 1886 – 22 January 1887 |
| G01/12/79 | 5 February 1887 – 6 August 1887 |
| G01/12/80 | 13 AUGUST 1887 – 3 MARCH 1888 |
| G01/12/81 | 22 September 1888 – 5 October 1889 |
| G01/12/82 | 19 October 1889 – 31 October 1891 |
| G01/12/83 | 14 November 1891 – 9 December 1893 |
| G01/12/84 | 6 January 1894 – 18 January 1896 |
| G01/12/85 | 1 February 1896 – 26 February 1898 |
| G01/12/86 | 12 March 1898 – 29 July 1889 - Incorporates minutes of Gort Rural District Council 15 April – 29 July 1899 |
| G01/12/87 | 2 September 1899 – 15 June 1901 |
| G01/12/88 | 24 August 1901 – 22 August 1903 |
| G01/12/89 | Missing |
| G01/12/90 | 28 October 1905 – 9 November 1907 |
| G01/12/91 | 23 November 1907 - 7 November 1908 |
| G01/12/92 | 21 November 1908 – 23 October 1909 |
| G01/12/93 | 6 November 1909 – 8 October 1910 - CLOSED due to its Poor Condition |
| G01/12/94 | 22 October 1910 – 23 September 1911 |
| G01/12/95 | 7 October 1911 - 21 September 1912 |
| G01/12/96 | 5 October 1912 – 6 September 1913 |
| G01/12/97 | 6 September 1913 - 25 July 1914 |



| | |
|------------------|-------------------------------|
| G01/12/98 | 8 August 1914 – 24 July 1915 |
| G01/12/99 | 7 August 1915 – 14 April 1917 |
| G01/12/100 | 12 May 1917 – 12 April 1919 |
| G01/12/101 | 10 May 1919 – 14 May 1921 |
| G01/12/102 – 103 | Missing |

Indoor Relief Register

G01/12/104 24 August 1914 - 11 August 1920 - Restricted Access

Indoor Relief List

G01/12/105 March 1917 - 30 September 1919 - FRAGILE – IN POOR CONDITION

Incoming Letter Book

G01/12/106 11 March 1912 - 25 March 1916 - RESTRICTED ACCESS IN POOR
CONDITION – [OIL] STAINED

Provision Receipt and Consumption Account and Provisions Check Account

G01/12/107 29 September 1917 - 30 November 1919

**Board of Guardian Rough Minutes**

| | |
|------------|--|
| G01/12/108 | 14 June 1844 – 18 July 1845 |
| G01/12/109 | 25 July 1845 – 17 April 1846 |
| G01/12/110 | 24 April 1846 – 19 March 1847 |
| G01/12/111 | Missing |
| G01/12/112 | 18 February 1848 – 1 December 1848 |
| G01/12/113 | 8 December 1848 – 21 September 1849 |
| G01/12/114 | 17 October 1849 – 30 July 1850 |
| G01/12/115 | 6 August 1850 – 24 March 1851 |
| G01/12/116 | 31 March 1851 – 20 October 1851 |
| G01/12/117 | 25 October 1851 – 18 May 1852 |
| G01/12/118 | 25 May 1852 - 29 November 1852 |
| G01/12/119 | 6 December 1852 - 9 May 1853 |
| G01/12/120 | 16 May 1853 – 24 October 1853 |
| G01/12/121 | 31 October 1853 – 10 April 1854 |
| G01/12/122 | 17 April 1854 – 9 October 1854 |
| G01/12/123 | 16 October 1854 – 9 April 1855 |
| G01/12/124 | 16 April 1855 – 11 October 1855 |
| G01/12/125 | 25 October 1855 – 27 March 1856 |
| G01/12/126 | Missing |
| G01/12/127 | 16 October 1856 – 12 March 1857 |
| G01/12/128 | 7 April 1857 – 30 April 1857 |
| G01/12/129 | Missing |
| G01/12/130 | 8 October 1857 – 20 March 1858 |
| G01/12/131 | 6 April 1858 – 28 September 1858 - fragile – in poor condition |
| G01/12/132 | 2 October 1858 – 29 March 1859 |
| G01/12/133 | 13 April 1859 – 17 September 1859 |
| G01/12/134 | 27 September 1859 – 22 November 1859 |



GORT POOR LAW UNION ARCHIVE COLLECTION

G01/12/

© Galway County Council

All Rights Reserved.

No part of this film may be reproduced or transmitted
in any form without the permission of
Galway County Council

Microfilm first produced 2008



**GORT POOR LAW UNION
BOARD OF GUARDIAN MINUTES**

G01/12/56

14 March 1874 – 19 September

1874

Go/12/56

uncil Archives

B
C

F
G
H
I
K

M
M^c

O
P
Q

S
T
U
V

JOSEPH DOLLARD'S
STEAM LITHO. AND TYPO. PRINTING OFFICES,
ACCOUNT BOOK MANUFACTORY,
AND STATIONERY STORES,
13 & 14 DAME STREET AND DAME LANE, DUBLIN.

Reference No. **U 16** Registered.

When ordering this Book again **DO NOT REMOVE A LEAF**, as above reference number will be sufficient to enable me to repeat the order; but **please give the number of the latest Book of the kind supplied.**

Population in 1871 - 20501

UNION.

Present Net Annual Value, £ 43231

STATE of the Workhouse for the Week ending Saturday, the 7th day of March 1874

| Number of Inmates for which accommodation is provided | No. that can be accommodated in each building | Total No. in each building on the above date | Able-bodied | | Aged and Infirm persons, above 15 years of age, but not working | | Boys and Girls above 9 and under 15 years of age | | Children above 5 and under 9 years of age | Children above 2 and under 5 years of age | Infants under 2 years of age | RETURN OF SICK AND LUNATICS. | | OBSERVATIONS. |
|---|---|--|-------------|-----------|---|-----------|--|----------|---|---|------------------------------|---------------------------------------|--|----------------------------------|
| | | | Males | Fem. | Males | Fem. | Boys | Girls | | | | Number in Hospital on the above date. | No. of Lunatics and Idiots in Workhouse on the above date. | |
| Workhouse | 729 | 150 | | | | | | | | | | | | |
| Temporary Buildings | | | | | | | | | | | | | | |
| Additional Workhouse | | | | | | | | | | | | | | |
| Permanent Fever Hospital | 57 | 3 | | | | | | | | | | | | |
| Fever Sheds | | | | | | | | | | | | | | |
| Total | 780 | 154 | | | | | | | | | | | | |
| Remaining on previous Saturday, as per last Return. | | | 11 | 17 | 34 | 47 | 5 | 4 | 10 | 12 | 9 | 149 | In Work-house Hospital } 49 | In separate Wards, } " |
| Admitted during the Week. | | | 5 | 1 | 1 | 5 | 2 | - | 1 | 1 | - | 16 | In Fever Hospital } 3 | In Wards with other inmates, } 3 |
| Born | | | - | - | - | - | - | - | - | - | - | - | | |
| TOTAL | | | 16 | 18 | 35 | 52 | 7 | 4 | 11 | 13 | 9 | 165 | TOTAL, 52 | TOTAL, 3 |
| Discharged during the Week. | | | 6 | 1 | - | - | 1 | - | 2 | 1 | - | 11 | | |
| Died. | | | - | - | - | - | - | - | - | - | - | - | | |
| Total Discharged and Dead. | | | 6 | 1 | - | - | 1 | - | 2 | 1 | - | 11 | | |
| REMAINING ON THE ABOVE DATE. | | | 10 | 17 | 35 | 52 | 6 | 4 | 9 | 12 | 9 | 154 | No. at corresponding period last year | 157 |

RETURN of DESTITUTE PERSONS relieved out of the Workhouse, as by Relief Lists, for the last Week, ended Saturday, the day of 187 , authenticated and laid before the Board of Guardians at this Meeting.

| Relief Districts | Destitute Persons relieved out of the Workhouse, (under 10 Vic. c. 31, s. 1.) | | Destitute Persons relieved out of the Workhouse (but not comprised in Sec. 1.) | | Total relieved out of the Workhouse. | | Relief Districts | Destitute Persons relieved out of the Workhouse (under 10 Vic. c. 31, s. 1.) | | Destitute Persons relieved out of the Workhouse (but not comprised in Sec. 1.) | | Total relieved out of the Workhouse. | |
|------------------|---|---|--|--|--------------------------------------|---------|------------------|--|---|--|--|--------------------------------------|----------|
| | Number of cases relieved | Number of Persons, including Applicant and Family dependent on him or her | Number of cases relieved | Number of Persons, including Applicant and Family dependent on him or her. | Cases. | Persons | | Number of cases relieved. | Number of Persons, including Applicant and Family dependent on him or her | Number of cases relieved. | Number of Persons, including Applicant and Family dependent on him or her. | Cases. | Persons. |
| No. I. | | | | | | | Et. forward, | | | | | | |
| No. II. | | | | | | | No. X. | | | | | | |
| No. III. | | | | | | | No. XI. | | | | | | |
| No. IV. | | | | | | | No. XII. | | | | | | |
| No. V. | | | | | | | No. XIII. | | | | | | |
| No. VI. | | | | | | | No. XIV. | | | | | | |
| No. VII. | | | | | | | No. XV. | | | | | | |
| No. VIII. | | | | | | | No. XVI. | | | | | | |
| No. IX. | | | | | | | No. XVII. | | | | | | |
| Car. forward, | | | | | | | TOTAL | | | | | | |

COPY of MINUTES of Proceedings of the Board of Guardians, at a Meeting held on Saturday the 14th day of March 1874.

PRESENT: In the Chair— Patk. C. Spelman, D. V. C.
 Other Guardians— Martin Deely, Andrew B. Nolan
 John Hallinan

The Minutes of last Meeting were read and signed.

Notices of Marriage between the parties hereunder-named having been received from the District Registrar by the Clerk, were duly read at the Board this day, in accordance with the 15th section of the 7 & 8 Vic., c. 81.

The Workhouse Register was produced, examined, and authenticated, from No. _____ to No. _____ both inclusive, by the signature of the Chairman and counter-signature of the Clerk.

The Out-door Relief Register was produced, examined, and authenticated, from No. _____ to No. _____ both inclusive, by the signature of the Chairman and counter-signature of the Clerk.

The Clerk's Report on the execution of Orders previously made by the Board was read, to the following effect:—

The Ledger was produced by the Clerk, posted up to the last day of Meeting, with the proper Debits and Credits as ordered on that day.

The Treasurer's Book of Receipts and Payments was produced, by which it appeared that there had been received during the week - - - - - £ 101 " 9 " 7

Paid during the week - - - - - £ 48 " 6 " 4

And that the Balance on the Account in favor the Guardians was £ 1068 " 15 " 11

The Book was signed by the Chairman.

The Weekly Balance-sheets of the several Collectors were laid before the Board, their accuracy having been first ascertained and authenticated by the Clerk.

The Lodgments made of Rates collected in the several Electoral Divisions appear to have been as follows:—

| Name of each Collector | Electoral Divisions arranged in Collectors' Districts | Amount Collected and Lodged | | | Total | | | Remaining | | | Total | | |
|--------------------------|---|-----------------------------|----|-----|-------|----|----|-----------|----|------|-------|----|----|
| | | £ | s. | d. | £ | s. | d. | £ | s. | d. | £ | s. | d. |
| J ^{rs} Hardiman | Ardamullivan | 1 | 17 | 10 | | | | 21 | 3 | 9 | | | |
| | Ballycahalan | 10 | 17 | 8 | | | | 9 | 18 | 5 | | | |
| | Beagh | 35 | 16 | 5 | | | | 51 | 7 | . | | | |
| | Burrinahow | 12 | 10 | 9 | | | | 12 | 1 | 4 | | | |
| | Bahernmore | 1 | 8 | 9 | | | | 10 | 12 | 4 | | | |
| | Capprardn | . | 1 | 3 | | | | - | 8 | 5 | | | |
| | Doorus | 5 | . | 1 | | | | 117 | 7 | . | | | |
| | Gort | 6 | 6 | 8 | | | | 139 | 11 | 8 | | | |
| | Kilbeacanty | . | 9 | 5 | | | | 7 | 8 | 10 | | | |
| | Killinny | 5 | 14 | 6 | | | | 77 | 7 | 8 | | | |
| | Kilbarban | 10 | 12 | 7 | | | | 24 | 12 | 11 | | | |
| | Kilthomas | 4 | 13 | 3 | | | | 28 | 1 | 8 | | | |
| | Kiwarran | 6 | . | 5 | 101 | 9 | 7 | 189 | 13 | 9 | 689 | 14 | 9 |
| Michl Taylor | Ardrakau | . | . | . | | | | 30 | 3 | 2 | | | |
| | Castle Taylor | . | . | . | | | | 65 | 6 | 4 | | | |
| | Drumacoo | . | . | . | | | | 132 | 11 | 5 | | | |
| | Killeely | . | . | . | | | | 60 | 4 | . | | | |
| | Killeenavarra | . | . | . | | | | 19 | 11 | 3 | | | |
| | Kilnasane | . | . | . | | | | 57 | 9 | 9 | | | |
| | Shehanagh | . | . | . | | | | 79 | 11 | 7 | 444 | 17 | 6 |
| | | | | 101 | 9 | 7 | | | | 1134 | 12 | 3 | |
| TOTALS ... | | | | | | | | | | | | | |

NOTE—A Total is to be inserted in Red Ink at the foot of each Collector's District, as well as for the entire Union. Debit the Treasurer and Credit the several Electoral Divisions with the respective amounts lodged.

The Clerk's Account of petty Disbursements made by him since last Meeting, amounting to £ was produced and passed.

The following Books were exhibited by the Clerk, he having first ascertained the accuracy of the entries made therein by the Master of the Workhouse, and authenticated the same by his signature.

1. The Weekly Relief List and Abstract.
2. The Provision Check Accounts.
3. The Provision Receipt and Consumption Account.

By which it appeared that the cost of Provisions and Necessaries received during the week was
£ 28 s. 9 d. /

| | £ | s. | d. |
|--|----|----|-------|
| Debit Provision Account, and Credit Invoice Account, | | | |
| The Cost of Provisions and Necessaries consumed was | 30 | 1 | 2 |
| Debit Maintenance Account, and Credit Provision Account, | | | |
| And the General average Cost of an Inmate for the week was | | 3 | 5 3/4 |
| Average Cost in Infirmary | | 4 | 2 1/2 |
| Average Cost in Fever Hospital | | | 5 : 0 |

The Master's estimate of Provisions and Necessaries required for the ensuing week was examined, and Orders were duly made for the several articles specified, namely:

1040 lbs. Bread
196 lbs. whole-meal
93 1/4 lbs. meat
4 - Sheep's Heads
736 qts - New Milk
1/2 Gal - Whiskey
6 doz - Porter

The following Books were also produced by the Clerk, their accuracy having been previously ascertained by him and authenticated by his Signature:—

1. The several Clothing Accounts.
2. The Medical Officers' Books.

The Out-door Relief Lists and Weekly Receipt and Expenditure Books of the several Relieving Officers were then produced by the Clerk, their accuracy having been previously ascertained by him, and authenticated by his Signature.

The Abstract of the Out-door Relief Lists was also produced by the Clerk, having been duly entered up by him for the last week, ended Saturday, the day of 187 , whereby it appeared that in that week the Total Expenditure in Out-door Relief was

| | £ | s. | d. |
|-------------------------|---|----|----|
| In Money, | | | |
| In Kind, | | | |
| Total, | £ | | |

Credit each Relieving Officer as per Receipt and Expenditure Book.

The requirements of each Relieving Officer for the ensuing week having been duly considered and estimated by the Board, cheques on the Treasurer, and Orders on Contractors were duly signed and delivered to each of them, of the following amounts and value, respectively:—

| Relief District. | Name of Relieving Officer. | By Cheque on Treasurer. | | By Order on Contractors. | | Relief District. | Name of Relieving Officer. | By Cheque on Treasurer. | | By Order on Contractors. | |
|------------------|----------------------------|-------------------------|-------|--------------------------|----------------|------------------|----------------------------|-------------------------|-------|--------------------------|----------------|
| | | £ | s. d. | Article and quantity. | Value. £ s. d. | | | £ | s. d. | Article and quantity. | Value. £ s. d. |
| No. I. | | | | | | Bt. forwd. | | | | | |
| No. II. | | | | | | No. X. | | | | | |
| No. III. | | | | | | No. XI. | | | | | |
| No. IV. | | | | | | No. XII. | | | | | |
| No. V. | | | | | | No. XIII. | | | | | |
| No. VI. | | | | | | No. XIV. | | | | | |
| No. VII. | | | | | | No. XV. | | | | | |
| No. VIII. | | | | | | No. XVI. | | | | | |
| No. IX. | | | | | | No. XVII. | | | | | |
| Carried forward, | | | | | | TOTAL, | | | | | |

Credit Treasurer with Cheques.

Debit each Relieving Officer with Cheques and Orders.

On the Report and recommendation of the Finance Committee, the following Bills, having been duly examined and found to be correct, and in accordance with the several orders, were directed to be paid, and Cheques for the several amounts were duly drawn on the Treasurer, and signed, namely:—

1. Clothing Account.

| £ | s. | d. |
|---|----|----|
| | | |
| | | |
| | | |

Debit Clothing Account, and Credit Treasurer with the several sums as above.

2. Establishment Account.

P. A. Leslie - Medicines, W. House 13 17 9

Debit Establishment Account, and Credit Treasurer with the several sums as above.

3. Workhouse Invoice Account.

L. S. Mangan - Bread & Meal

£ s. d.
12 4 10

Debit Workhouse Invoice Account, and Credit Treasurer with the several sums as above.

4. Outdoor Relief Invoice Account.

| | | | | |
|---|------------|----|----|---|
| Quinn & Cameron - advertising - | 2 " 11 " 0 | 2 | 11 | . |
| John M ^c Phelpin do | 1 " 0 " 6 | 1 | 0 | 6 |
| L. L. Ferdinand do | 1 " 15 " 0 | 1 | 15 | . |
| A. Thorne Books &c | 8 " 10 " 1 | 8 | 10 | 1 |
| D. Dullea - Closing late Clerk's accounts | 5 " 0 " 0 | 5 | . | . |
| Railway carriage | 1 " 0 " 7 | 1 | 0 | 7 |
| do do | 1 " 0 " 0 | 1 | 0 | 0 |
| John Glynn - Potatoes | 8 " 10 " 0 | 8 | 10 | . |
| John Consideire - Flags | 17 " 0 " 0 | 17 | 0 | 0 |

Credit Treasurer and Debit Outdoor Relief Invoice Account with the several sums as above.

The Clerk's Report of Vaccination was read—(this on the first Meeting in every Month)—Number of successful cases:—

The Report of the Visiting Committee was read, and Orders were made thereon as follows:—

The Reports of the Master and other Officers were read, and Orders made thereon, as follows:—

The Master reported the milk tests as follows

| | Lbs. | Cream |
|---------------------------|--------|--------|
| M ^r P. Treilan | 26 1/2 | 12 1/2 |
| " Jas. Broderick | 26 | 10 3/4 |
| " E. Broderick | 27 1/4 | 13 1/4 |

The following Orders of the Local Government Board were laid before the Board, and directions given thereon, as follows:—

The following Letters from the Local Government Board and others were read by the Clerk, and directions given to answer them respectively to the following effect (or Orders made on them respectively, as follows:—)

Letter from Mr. Nolan, Solicitor, stating that the Judge at Galway Assizes, had reversed the decision of the Chairman for the County (Mr. Heron) in a case in which the Guardians had a tenant called Broderick prosecuted for £16 0 7 arrears due by him for a portion of the W. house lands which he held. The decree £5 0 0 + costs £1 11 6
Ordered to be applied for

The Tender of Martin Healy was accepted for supplying:

| | |
|---|-----|
| Mens shoes - per pair | 8 0 |
| Womens do do do | 7 0 |
| Boys & Girls Boots do do | 6 0 |
| Soaling, Heeling & Welting do do | 2 |
| Mens, Womens, Boys & Childrens Boots & shoes per pair | 3 0 |
| Soaling only | 2 6 |
| Heeling only | 10 |

James H. Braith

MINUTES OF PROCEEDINGS OF THE BOARD OF GUARDIANS OF THE

UNION, on 14th the 14th day of March 1874.—continued.

SUPPLEMENTAL SHEET—MEDICAL CHARITIES ACT, 14 & 15 Vic., cap. 68; and
NUISANCES REMOVAL AND DISEASES PREVENTION ACTS, 1848 & 1849.

An Estimate of Medicines, &c., required by the Medical Officer of the Gort Dispensary District
Dispensary District, approved by the Committee of Management, was laid before the Board, with a Requisition from
the Committee for the supply of the same, and directions were given thereon, as follows:—

Ordered to be supplied

An Invoice of Medicines forwarded by the Contractor for the _____
Dispensary District, in pursuance of an Order of the Board in their Minutes of _____
having been received from him, the Clerk laid the Invoice before the Board, and was directed to forward the same
(or, reported that he had forwarded the same, as the case may be) to the Medical Officer of the District, retaining a
Copy of the Invoice for the use of the Guardians.

On Application of the Committee of Management of the _____
Dispensary District, the following supplies of Books, Stationery, Forms, or other Requisites, were ordered to be
supplied:—

Next Meeting of the Guardians to be held on _____ the _____ day of

_____ 187 .

Signed, _____
Clerk of the Union.

The following Accounts of Expenses (or, statement of Salaries due, as the case may be) under the Medical Charities Act were laid before the Board, and directions were given for Payment thereof, or such other directions as may be given :

Gort Dispensary District.

Account of Mr. P. A. Lohlin & Co for Medicines Amount, £ 137.7.9

do

Ardrahan - Dist^y District 27..9..5

Gort do do 14..0..5

55..7..7

| | | |
|---|-----------------------------|-----------------|
| <u>Gort. Dist^y - Arnold & Sons</u> | <u>Surgical Instruments</u> | 2..2..0 |
| <u>do do D^r Tolan</u> | <u>Vaccination</u> | 8..11..0 |
| <u>do do Edw^d B. Sinclair</u> | <u>Vaccine Lymph</u> | 10..6 |
| <u>Ardrⁿ do do</u> | <u>do</u> | 10..6 |
| <u>Kinvarra do do</u> | <u>do</u> | 10..6 |
| <u>amt. of Cheque -</u> | | <u>1..11..6</u> |

James J. Breith

[This at the end of each half-year, in pursuance of Articles 28 & 29 of the General Rules for Dispensary Districts, dated 16th December, 1853.] An Account of the Expenses incurred for the service of each Dispensary District in the Union for the half-year ended 187, having been submitted to the Board, the Clerk was directed to furnish to the Committee of each Dispensary District a Statement of all the Expenses of the District which have been included in the half-year's Accounts. The following is the Total Expenses incurred for each Dispensary District for the

half-year ended 187 .

| | | | | | |
|-----------------|---|---|---|---|---|
| _____ District, | . | . | . | . | £ |
| _____ District, | . | . | . | . | £ |

[This to be entered on the occasion of every appointment of a new Committee, after the annual Election of Guardians, and on the occasion of any election to fill any vacancies in a Dispensary Committee.] The Board elected the following Ratepayers to be Members of the Committees of Management of the following Dispensary Districts, respectively:—the Clerk to make a Return accordingly to the Local Government Board and to issue the prescribed Notification to the Members elected, and to the Medical Officers of the respective Dispensary Districts, in pursuance of Articles 1, 2, and 3, of the General Regulations for Dispensary Districts. The Clerk was also directed to supply Check Books of Medical Relief Tickets (Forms E 1 and E 2), in pursuance of Article 27 of the Dispensary Regulations, to the New Members of Committees, namely:—

_____ Dispensary District, Mr. _____ of _____

The following Orders of the Local Government Board under the Medical Charities Act, were laid before the Board, and directions given thereon, as follows:

Order dated _____ (state subject.)

16

The following Letters on matters arising under the Medical Charities Act, or the Nuisances Removal and Diseases Prevention Acts, from the Local Government Board and others were read by the Clerk, and directions given to answer them respectively to the following effect (or Orders were made on them respectively, as follows:)

Read Letter from _____ dated _____ stating that _____

Population in 187

Present Net Annual Value, £ _____

STATE of the Workhouse for the Week ending Saturday, the 14th day of March 1874

| Number of Inmates for which accommodation is provided | No. that can be accommodated in each building | Total No. in each building on the above date | Able-bodied | | Aged and infirm persons, and adult persons, above 15 years of age, but not working | | Boys and Girls above 9 and under 15 years of age | | Children above 9 and under 15 years of age | Infants under 2 years of age | Total | RETURN OF SICK AND LUNATICS | | OBSERVATIONS. | |
|---|---|--|-------------|------|--|------|--|-------|--|------------------------------|-------|--------------------------------------|---|---|---|
| | | | Males | Fem. | Males | Fem. | Boys | Girls | | | | Number in Hospital on the above date | No. of Lunatics and Idiots in Workhouse on the above date | | |
| Workhouse | 729 | 142 | 10 | 17 | 35 | 52 | 6 | 4 | 9 | 12 | 9 | 157 | In Workhouse Hospital 48 | In separate Wards, In Wards with other Inmates, 3 | |
| Temporary Buildings | | | | | | | | | | | | | | | |
| Additional Workhouse | | | | | | | | | | | | | | | |
| Permanent Fever Hospital | 51 | 2 | | | | | | | | | | | | | |
| Fever Sheds | | | | | | | | | | | | | | | |
| Total | 770 | 144 | | | | | | | | | | | TOTAL, 50 | TOTAL, 3 | |
| Remaining on previous Saturday, as per last Return. | | | 10 | 17 | 35 | 52 | 6 | 4 | 9 | 12 | 9 | 157 | In Workhouse Hospital 48 | In separate Wards, In Wards with other Inmates, 3 | |
| Admitted during the Week. | | | | | | | | | | | | | | | |
| Born | | | | | | | | | | | | | | | |
| TOTAL | | | | | | | | | | | | | TOTAL, 50 | TOTAL, 3 | |
| Discharged during the Week. | | | 3 | 2 | 1 | 1 | 1 | 1 | 1 | 1 | 1 | 9 | | | |
| Died | | | | | | | | | | | | | | | |
| Total Discharged and Dead. | | | 3 | 2 | 1 | 1 | 1 | 1 | 1 | 1 | 1 | 10 | | | |
| REMAINING ON THE ABOVE DATE. | | | 7 | 10 | 33 | 57 | 6 | 3 | 8 | 12 | 8 | 144 | No. Relieved during week } No. in Workhouse at date } | | No. at corresponding period last year 158 |

RETURN of DESTITUTE PERSONS relieved out of the Workhouse, as by Relief Lists, for the last Week, ended Saturday, the _____ day of _____ 187, authenticated and laid before the Board of Guardians at this Meeting.

| Relief Districts | Destitute Persons relieved Out of the Workhouse (under 10 Vic. c. 31, s. 1.) | | Destitute Persons relieved out of the Workhouse (but not comprised in Sec. 1.) | | Total relieved out of the Workhouse. | | Relief Districts | Destitute Persons relieved out of the Workhouse (under 10 Vic. c. 31, s. 1.) | | Destitute Persons relieved out of the Workhouse (but not comprised in Sec. 1.) | | Total relieved out of the Workhouse. | |
|------------------|--|---|--|--|--------------------------------------|---------|------------------|--|---|--|--|--------------------------------------|----------|
| | Number of cases relieved | Number of Persons, including Applicant and Family dependent on him or her | Number of cases relieved | Number of Persons, including Applicant and Family dependent on him or her. | Cases. | Persons | | Number of cases relieved. | Number of Persons, including Applicant and Family dependent on him or her | Number of cases relieved. | Number of Persons, including Applicant and Family dependent on him or her. | Cases. | Persons. |
| No. I. | | | | | | | Et forward. | | | | | | |
| No. II. | | | | | | | No. X. | | | | | | |
| No. III. | | | | | | | No. XI. | | | | | | |
| No. IV. | | | | | | | No. XII. | | | | | | |
| No. V. | | | | | | | No. XIII. | | | | | | |
| No. VI. | | | | | | | No. XIV. | | | | | | |
| No. VII. | | | | | | | No. XV. | | | | | | |
| No. VIII. | | | | | | | No. XVI. | | | | | | |
| No. IX. | | | | | | | No. XVII. | | | | | | |
| Et forward. | | | | | | | TOTAL | | | | | | |

COPY of MINUTES of Proceedings of the Board of Guardians, at a Meeting held on Saturday the 21 day of March 1874.

PRESENT: In the Chair— James Galbraith Esq. J.P.
 Other Guardians— Robert J. Lally, Martin Cren
 John Penke, P. C. Spelman and
 A. B. Nolan.

Signed, _____ Clerk of the Union.

Notices of Marriage between the parties hereunder-named having been received from the District Registrar by the Clerk, were duly read at the Board this day, in accordance with the 15th section of the 7 & 8 Vic., c. 81.

The Workhouse Register was produced, examined, and authenticated, from No. 3415 to No. 3432 both inclusive, by the signature of the Chairman and counter-signature of the Clerk.

The Out-door Relief Register was produced, examined, and authenticated, from No. — to No. — both inclusive, by the signature of the Chairman and counter-signature of the Clerk.

The Clerk's Report on the execution of Orders previously made by the Board was read, to the following effect:—

The Ledger was produced by the Clerk, ~~passed~~ up to the last day of Meeting, with the proper Debits and Credits as ordered on that day.

The Treasurer's Book of Receipts and Payments was produced, by which it appeared that there had been received during the week - - - - - £ 13. 2. 4

Paid during the week - - - - - £ 19. 1. 11

And that the Balance on the Account in favor the Guardians was £ 1062. 16. 4

The Book was signed by the Chairman.

The Weekly Balance-sheets of the several Collectors were laid before the Board, their accuracy having been first ascertained and authenticated by the Clerk.

The Lodgments made of Rates collected in the several Electoral Divisions appear to have been as follows:—

| Name of each Collector | Electoral Divisions arranged in Collectors' Districts | Amount Collected and Lodged | | | Total | | | Remaining | | | Total | | | | |
|------------------------|---|-----------------------------|----|----|-------|----|----|-----------|-----|----|-------|-----|------|----|---|
| | | £ | s. | d. | £ | s. | d. | £ | s. | d. | £ | s. | d. | | |
| Hos. Cassidy | Adanullion | " | 9 | 7 | | | | 20 | 13 | 1 | | | | | |
| | Addeahan | " | | | | | | 9 | 18 | 5 | | | | | |
| | Ballycahalan | " | 3 | 3 | | | | 50 | 12 | 6 | | | | | |
| | Belfah | " | 2 | 3 | 5 | | | 12 | 1 | 4 | | | | | |
| | Brynhaw | " | 2 | 7 | 7 | | | 10 | 12 | 4 | | | | | |
| | Cashmore | " | " | " | " | | | | | 8 | 5 | | | | |
| | Cappard | " | " | " | " | | | 117 | 7 | - | | | | | |
| | Doon | " | " | " | " | | | 137 | 17 | - | | | | | |
| | Doon | " | " | " | " | | | 6 | 12 | - | | | | | |
| | Doon | " | " | " | " | | | 75 | 11 | 5 | | | | | |
| " " | Kilbuck | " | 1 | 1 | | | | 24 | 12 | 11 | | | | | |
| | Kilbuck | " | 2 | 13 | 2 | | | 28 | 1 | 8 | | | | | |
| | Kilbuck | " | 1 | 10 | 8 | | | | | | | | | | |
| | Kilbuck | " | | | | | | | | | | | | | |
| | Kilbuck | " | 3 | 13 | 7 | 13 | 2 | 4 | 185 | 4 | 11 | 679 | 13 | | |
| | Kilbuck | " | | | | | | | | | | | | | |
| | Kilbuck | " | | | | | | | | | | | | | |
| Wm. Taylor | Addeahan | | | | | | | 30 | 3 | 2 | | | | | |
| | Ballycahalan | | | | | | | 65 | 6 | 4 | | | | | |
| | Brynhaw | | | | | | | 132 | 11 | 5 | | | | | |
| | Brynhaw | | | | | | | 60 | 4 | - | | | | | |
| | Brynhaw | | | | | | | 19 | 11 | 3 | | | | | |
| | Brynhaw | | | | | | | 57 | 9 | 9 | | | | | |
| " " | Brynhaw | | | | | | | 79 | 11 | 7 | | | 444 | 17 | 6 |
| | Brynhaw | | | | | | | | | | | | | | |
| TOTALS ... | | | | | | | | 13 | 2 | 4 | | | 1124 | 10 | 6 |

NOTE—A Total is to be inserted in Red Ink at the foot of each Collector's District, as well as for the entire Union. Debit the Treasurer and Credit the several Electoral Divisions with the respective amounts lodged.

The Clerk's Account of petty Disbursements made by him since last Meeting, amounting to £ - : - : - was produced and passed.

The following Books were exhibited by the Clerk, he having first ascertained the accuracy of the entries made therein by the Master of the Workhouse, and authenticated the same by his signature.

- 1. The Weekly Relief List and Abstract.
2. The Provision Check Accounts.
3. The Provision Receipt and Consumption Account.

By which it appeared that the cost of Provisions and Necessaries received during the week was £21. 12s. 8d.

Table with columns for description and amount in £ s. d. format. Includes items like 'Debit Provision Account, and Credit Invoice Account' and 'Average Cost in Fever Hospital'.

The Master's estimate of Provisions and Necessaries required for the ensuing week was examined, and Orders were duly made for the several articles specified, namely:

Handwritten list of items: 1030 lbs. Bread, 100 lbs. Meat, 4 Sheep's Heads, 777 gals Milk, 1/2 gal whiskey, 6 doz. Potatoes.

The following Books were also produced by the Clerk, their accuracy having been previously ascertained by him and authenticated by his Signature:—

- 1. The several Clothing Accounts.
2. The Medical Officers' Books.

The Out-door Relief Lists and Weekly Receipt and Expenditure Books of the several Relieving Officers were then produced by the Clerk, their accuracy having been previously ascertained by him, and authenticated by his Signature.

The Abstract of the Out-door Relief Lists was also produced by the Clerk, having been duly entered up by him for the last week, ended Saturday, the day of 187, whereby it appeared that in that week the Total Expenditure in Out-door Relief was

Table with columns for 'In Money', 'In Kind', and 'Total' with sub-columns for £, s., and d.

Credit each Relieving Officer as per Receipt and Expenditure Book.

The requirements of each Relieving Officer for the ensuing week having been duly considered and estimated by the Board, cheques on the Treasurer, and Orders on Contractors were duly signed and delivered to each of them, of the following amounts and value, respectively:—

Large table with columns for Relief District, Name of Relieving Officer, By Cheque on Treasurer, By Order on Contractors, and Value. Includes rows for Nos. I through XVII and a TOTAL row.

Credit Treasurer with Cheques.

Debit each Relieving Officer with Cheques and Orders.

On the Report and recommendation of the Finance Committee, the following Bills, having been duly examined and found to be correct, and in accordance with the several orders, were directed to be paid, and Cheques for the several amounts were duly drawn on the Treasurer, and signed, namely:—

- 1. Clothing Account.

Table with columns for £, s., and d. for the Clothing Account.

Debit Clothing Account, and Credit Treasurer with the several sums as above.

- 2. Establishment Account.

Table with columns for £, s., and d. for the Establishment Account.

Debit Establishment Account, and Credit Treasurer with the several sums as above.

3. Workhouse Invoice Account.

| | £ | s. | d. |
|---------------------------|----|----|----|
| P. S. Mangam Bread & meal | 17 | 4 | 11 |

Debit Workhouse Invoice Account, and Credit Treasurer with the several sums as above.

Sunday ~~Out-door Relief Invoice Account~~

| | | | |
|--|----|----|-------|
| Dr. Repm's Registration fee to 31 Dec 73 | 4 | 13 | - |
| Wm. Cogan 9d by 25/12/73 | 2 | 7 | 0 |
| P. Cogan Ch. to 25/12/73 | 15 | 9 | - |
| W. Mulville expenses to do. | 6 | 6 | - |
| Wm. C. M. M. - Line | 16 | 6 | - |
| Ellen Murphy - Egg | 1 | 0 | - |
| D. D. Ballin - Butter | 5 | 10 | 3 3 7 |

Credit Treasurer and Debit Out-door Relief Invoice Account with the several sums as above.

The Clerk's Report of Vaccination was read—(this on the first Meeting in every Month)—Number of successful cases:—

The Report of the Visiting Committee was read, and Orders were made thereon as follows:—

The Reports of the Master and other Officers were read, and Orders made thereon, as follows:—

The Master reported the sales as follows

| | £ | Amount |
|------------------|--------|--------|
| Mr. P. Milan | 26 | 14 1/2 |
| Mr. Jas. Goodwin | 26 3/4 | 14 1/4 |
| Mr. E. Goodwin | 27 | 14 1/2 |

Ordered for use of workhouse
3 lbs tobacco and a suit of clothes
for Mary Ann Hutton going to service.

The following Orders of the Local Government Board were laid before the Board, and directions given thereon, as follows:—

The following Letters from the Local Government Board and others were read by the Clerk, and directions given to answer them respectively to the following effect (or Orders made on them respectively, as follows:—)

Resolved That the usual tea breakfast and meat-dinner be supplied the inmates on East-Sunday —

The Board accepted the tender of Mr. Daniel 55 Quay St. Dublin for supplying galvanised iron wafflers for the prisons at £5.10.0 each subject to his specification for same being approved of. James P. Walsh

Galway County Council

34

35

Galway County Council Archives

The cases of provisional relief, and applications for relief, were considered and decided on, as set forth in the Application and Report Books.

| | | | | |
|---|---|---|---|----|
| The number of provisional admissions to the Workhouse confirmed was | - | - | - | 10 |
| Ditto disallowed | - | - | - | 1 |
| The number of applicants admitted to the Workhouse was | - | - | - | 1 |

| | | | | |
|--|---|---|---|---|
| The number of cases of provisional Out-door relief was | - | - | - | - |
| Do. in which relief was continued by the Guardians | - | - | - | - |
| The number of other applicants in the Relieving Officers' Books relieved by order of the Guardians was | - | - | - | - |

| | | | | |
|--|---|---|---|---|
| The number of applicants for whom relief was not ordered | - | - | - | - |
|--|---|---|---|---|

The bonds and other securities in force were laid before the Guardians by the Clerk, together with his Report thereon, as follows: (this on the second Meeting after the Annual Election in every year.)

The following Letters on matters arising under the Medical Charities Act, or the Nuisances Removal and Diseases Prevention Acts, from the Local Government Board and others were read by the Clerk, and directions given to answer them respectively to the following effect (or Orders were made on them respectively, as follows:)

Read Letter from _____ dated _____ stating that _____

41

Galway UNION.

Population in 187 205⁰¹ Present Net Annual Value, £ 43 2 31

STATE of the Workhouse for the Week ending Saturday, the 21st day of March 1874

| Number of Inmates for which accommodation is provided | No. that can be accommodated in each building | Total No. in each building on the above date | Able-bodied | | Aged and Infirm persons, and adult persons, above 15 years of age, but not working | | Boys and Girls above 9 and under 15 years of age. | | Children above 5 and under 7 years of age. | Children above 2 and under 5 years of age. | Infants under 2 years of age. | Total | RETURN OF SICK AND LUNATICS. | | OBSERVATIONS. | |
|---|---|--|-------------|-----------|--|-----------|---|----------|--|--|-------------------------------|------------|---|--|---------------|--|
| | | | Males | Fem. | Males | Fem. | Boys | Girls | | | | | In Hospital on the above date. | No. of Lunatics and Idiots in Workhouse on the above date. | | |
| Workhouse | 729 | 152 | | | | | | | | | | | | | | |
| Temporary Buildings | | | | | | | | | | | | | | | | |
| Additional Workhouse | 51 | 2 | | | | | | | | | | | | | | |
| Permanent Fever Hospital | | | | | | | | | | | | | | | | |
| Fever Sheds | | | | | | | | | | | | | | | | |
| Total | 780 | 154 | | | | | | | | | | | | | | |
| Remaining on previous Saturday, as per last Return. | | | 7 | 16 | 33 | 51 | 6 | 3 | 8 | 12 | 8 | 144 | In Workhouse } 52 | In separate } " | | |
| Admitted during the Week. | | | 7 | 2 | 3 | 1 | | 2 | | | | 15 | Hospital } 2 | In Wards } 3 | | |
| Born | | | | | | | | | | | | | | | | |
| TOTAL | | | 14 | 18 | 36 | 52 | 6 | 5 | 8 | 12 | 8 | 159 | TOTAL } 54 | TOTAL } 3 | | |
| Discharged during the Week. | | | 2 | " | " | 7 | " | " | " | " | " | 4 | | | | |
| Died. | | | " | " | " | 7 | " | " | " | " | " | 1 | | | | |
| Total Discharged and Dead. | | | 2 | | | 3 | | | | | | 5 | No. Relieved during week } 5 | | | |
| REMAINING ON THE ABOVE DATE. | | | 12 | 18 | 36 | 49 | 6 | 5 | 8 | 12 | 8 | 154 | No. in Workhouse at date } 3 | | | |
| | | | | | | | | | | | | | No. at corresponding period last year } 163 | | | |

RETURN of DESTITUTE PERSONS relieved out of the Workhouse, as by Relief Lists, for the last Week, ended Saturday, the _____ day of _____ 187 , authenticated and laid before the Board of Guardians at this Meeting.

| Relief Districts | Destitute Persons relieved out of the Workhouse (under 10 Vic. c. 31, s. 1.) | | Destitute Persons relieved out of the Workhouse (but not comprised in Sec. 1.) | | Total relieved out of the Workhouse. | | Relief Districts | Destitute Persons relieved out of the Workhouse (under 10 Vic. c. 31, s. 1.) | | Destitute Persons relieved out of the Workhouse (but not comprised in Sec. 1.) | | Total relieved out of the Workhouse. | |
|------------------|--|---|--|--|--------------------------------------|---------|------------------|--|---|--|--|--------------------------------------|---------|
| | Number of cases relieved | Number of Persons, including Applicant and Family dependent on him or her | Number of cases relieved | Number of Persons, including Applicant and Family dependent on him or her. | Cases | Persons | | Number of cases relieved. | Number of Persons, including Applicant and Family dependent on him or her | Number of cases relieved. | Number of Persons, including Applicant and Family dependent on him or her. | Cases | Persons |
| No. I. | | | | | | | Et forward, | | | | | | |
| No. II. | | | | | | | No. X. | | | | | | |
| No. III. | | | | | | | No. XI. | | | | | | |
| No. IV. | | | | | | | No. XII. | | | | | | |
| No. V. | | | | | | | No. XIII. | | | | | | |
| No. VI. | | | | | | | No. XIV. | | | | | | |
| No. VII. | | | | | | | No. XV. | | | | | | |
| No. VIII. | | | | | | | No. XVI. | | | | | | |
| No. IX. | | | | | | | No. XVII. | | | | | | |
| Et forward, | | | | | | | TOTAL | | | | | | |

COPY of MINUTES of Proceedings of the Board of Guardians, at a Meeting held on Saturday the 28th day of March 1874.

PRESENT: In the Chair— James Galbraith Esq. J. P.
 Other Guardians— Nicholas Butler, Walter S. Taylor, Owenweeney, Walter M. Neilan, Patk. C. Spelman, And^{rs} B. Tolan, John Geoghegan & John Hallinan

Signed, _____ Clerk of the Union.

Notices of Marriage between the parties hereunder-named having been received from the District Registrar by the Clerk, were duly read at the Board this day, in accordance with the 15th section of the 7 & 8 Vic., c. 81.

The Workhouse Register was produced, examined, and authenticated, from No. 3433 to No. 3440 inclusive, by the signature of the Chairman and counter-signature of the Clerk.

The Out-door Relief Register was produced, examined, and authenticated, from No. — to No. — both inclusive, by the signature of the Chairman and counter-signature of the Clerk.

The Clerk's Report on the execution of Orders previously made by the Board was read, to the following effect:—

The Ledger was produced by the Clerk, noted up to the last day of Meeting, with the proper Debits and Credits as ordered on that day.

The Treasurer's Book of Receipts and Payments was produced, by which it appeared that there had been received during the week - - - - - £ 138 - 0 - 6

Paid during the week - - - - - £ 25 - 15 - 0

And that the Balance on the Account in favor the Guardians was £ 1175 - 1 - 10

The Book was signed by the Chairman.

The Weekly Balance-sheets of the several Collectors were laid before the Board, their accuracy having been first ascertained and authenticated by the Clerk.

The Lodgments made of Rates collected in the several Electoral Divisions appear to have been as follows:—

| Name of each Collector | Electoral Divisions arranged in Collectors' Districts | Amount Collected and Lodged | | | Total | | | Remaining | | | Total | | |
|------------------------|---|-----------------------------|----|-----|-------|----|-----|-----------|----|----|--------------------------------------|----------|----|
| | | £ | s. | d. | £ | s. | d. | £ | s. | d. | £ | s. | d. |
| Thos Hardiman | Ardamullinan | 8 | 13 | 10 | 8 | 13 | 10 | 12 | 9 | 11 | £ 122.12.1 out Lodged 26 March 74 | 566 17 5 | |
| | Ballycahan | . | . | . | . | . | . | 9 | 18 | 5 | | | |
| | Beagh | 6 | . | 2 | 6 | . | 2 | 45 | 6 | 10 | | | |
| | Bunmahow | 9 | 2 | 2 | 9 | 2 | 2 | 2 | 19 | 2 | | | |
| | Cahermore | 1 | 10 | 8 | 1 | 10 | 8 | 9 | 1 | 8 | | | |
| | Cappard | 1 | 10 | 8 | . | . | . | - | 8 | 5 | | | |
| | Dobrus | 10 | 1 | 4 | 10 | 1 | 4 | 107 | 5 | 8 | | | |
| | Gort | 29 | 14 | 8 | 29 | 14 | 8 | 109 | 17 | - | | | |
| | Kilbeacanty | 3 | 29 | 14 | 3 | 29 | 14 | 3 | 13 | 3 | | | |
| | Kilbally | 3 | 15 | 7 | 22 | - | 3 | 55 | 7 | 5 | | | |
| | Kilbarrow | 22 | . | 3 | 4 | 14 | 2 | 19 | 18 | 9 | | | |
| Kilthomas | 0 | 0 | 0 | . | . | . | 28 | 1 | 8 | | | | |
| Kinvarra | | | | 26 | 19 | 3 | 162 | 9 | 3 | | | | |
| | | | | 122 | 12 | 1 | | | | | | | |
| Mr. W. Taylor | Ardrahan | | | | 13 | 6 | 6 | 16 | 16 | 8 | 138 - 6 306 17 | 873 14 5 | |
| | Castle Taylor | | | | 76 | 9 | . | 18 | 17 | 4 | | | |
| | Drumacoo | | | | 22 | 1 | 3 | 110 | 10 | 2 | | | |
| | Killeely | | | | 12 | 11 | 9 | 47 | 12 | 3 | | | |
| | Killeentavara | | | | 2 | 12 | 6 | 16 | 18 | 9 | | | |
| | Kilnasaul | | | | 6 | 1 | 3 | 51 | 8 | 6 | | | |
| | Shehanagh | | | | 34 | 18 | 3 | 44 | 13 | 4 | | | |
| | | | | 138 | - | 6 | 306 | 17 | - | | | | |
| TOTALS ... | | | | 260 | 12 | 7 | | | | | | | |

NOTE—A Total is to be inserted in Red Ink at the foot of each Collector's District, as well as for the entire Union. Debit the Treasurer and Credit the several Electoral Divisions with the respective amounts lodged.

The Clerk's Account of petty Disbursements made by him since last Meeting, amounting to £ : : was produced and passed.

The following Books were exhibited by the Clerk, he having first ascertained the accuracy of the entries made therein by the Master of the Workhouse, and authenticated the same by his signature.

- 1. The Weekly Relief List and Abstract.
2. The Provision Check Accounts.
3. The Provision Receipt and Consumption Account.

By which it appeared that the cost of Provisions and Necessaries received during the week was £ 24 s. 6 d. 10

Table with columns £ s. d. showing Debit Provision Account, Credit Invoice Account, Cost of Provisions and Necessaries consumed was 29: 2: 11, Debit Maintenance Account, Credit Provision Account, Average Cost of an Inmate for the week was 3: 6, Average Cost in Infirmary 4: 3, Average Cost in Fever Hospital 5: 6.

The Master's estimate of Provisions and Necessaries required for the ensuing week was examined, and Orders were duly made for the several articles specified, namely:

Handwritten list of provisions: 1040 lbs. Bread, 110 " Meat, 280 - oatmeal, 732 qts. Milk, 7 doz. porter, 4 Sheep's Heads, 112 lbs. Whole meal.

The following Books were also produced by the Clerk, their accuracy having been previously ascertained by him and authenticated by his Signature:—

- 1. The several Clothing Accounts.
2. The Medical Officers' Books.

The Out-door Relief Lists and Weekly Receipt and Expenditure Books of the several Relieving Officers were then produced by the Clerk, their accuracy having been previously ascertained by him, and authenticated by his Signature.

The Abstract of the Out-door Relief Lists was also produced by the Clerk, having been duly entered up by him for the last week, ended Saturday, the day of 187, whereby it appeared that in that week the Total Expenditure in Out-door Relief was

Table with columns £ s. d. showing In Money, In Kind, and Total.

Credit each Relieving Officer as per Receipt and Expenditure Book.

The requirements of each Relieving Officer for the ensuing week having been duly considered and estimated by the Board, cheques on the Treasurer, and Orders on Contractors were duly signed and delivered to each of them, of the following amounts and value, respectively:—

Table with columns: Relief District, Name of Relieving Officer, By Cheque on Treasurer, By Order on Contractors, Relief District, Name of Relieving Officer, By Cheque on Treasurer, By Order on Contractors. Includes rows No. I to No. IX and a TOTAL row.

Credit Treasurer with Cheques.

Debit each Relieving Officer with Cheques and Orders.

On the Report and recommendation of the Finance Committee, the following Bills, having been duly examined and found to be correct, and in accordance with the several orders, were directed to be paid, and Cheques for the several amounts were duly drawn on the Treasurer, and signed, namely:—

Establishment and Clothing Account.

Table with columns £ s. d. listing names and amounts: Rev. Dean Bermingham (1/4 salary 2 10), Muhl. Connolly (12 10), W. O'K. Tolan - M. D. (15 0 0), D. Dullea - Master (17 10), Maria Dullea - Matron (7 10), Mary - McEamarras - Schoolmistress (6 5), Maria Luyth - nurse (4 9 2), Bridget O'Roughlin - Fever nurse (1 10), James Hoarty - Porter (2), Walter Mulville - Establishment Account. Clerk (20), Jap. W. Murtagh - apothecary to W. House (7 10 3 2 8), Biscuit Gough - rent (7 10 3 2 8), W. Mulville - School requisites (2 9 8).

Debit Establishment Account, and Credit Treasurer with the several sums as above.

46

3. Workhouse Invoice Account.

| | | £ | s. | d. |
|--------------|-------|----|----|----|
| Martin Walsh | Meat | 52 | 2 | 7 |
| L. J. Mangau | Bread | 8 | . | 11 |

Debit Workhouse Invoice Account, and Credit Treasurer with the several sums as above.

4. Out-door Relief Invoice Account.

| | | | | | | |
|-----------------|-----------------|------------|-------------------|----|----|---|
| Pat Burke - | R. Off | 1/4 Salary | 3.15.0 | | | |
| do do | Sau " | " | 2.10.0 | 6 | 5 | " |
| John Hardiman - | R. Off | " | 3.15.0 | | | |
| do do | Sau " | " | 2.10.0 | 6 | 5 | " |
| James Farrell - | Supercumulation | | 3.16.8 | 3 | 16 | 8 |
| Pat Burke - | Expenses | | | 3 | " | " |
| John Hardiman - | poundage | | | 15 | 14 | 9 |
| Michl Taylor - | do | | | 4 | 15 | 7 |
| Wm. Millville - | R. Off | | | 5 | " | " |

Credit Treasurer and Debit Out-door Relief Invoice Account with the several sums as above.

The Clerk's Report of Vaccination was read—(this on the first Meeting in every Month)—Number of successful cases:—

The Report of the Visiting Committee was read, and Orders were made thereon as follows:—

47

Galway County Council Archives

The Reports of the Master and other Officers were read, and Orders made thereon, as follows:—

The Master reported the Milk Tests as follows

| | Lac | Cream |
|------------------|--------|----------|
| Mr. P. Feilau | 26 1/2 | " 12 |
| " Lab. Broderick | 26 | " 11 |
| " Edw. Broderick | 27 | " 12 1/4 |

The following Orders of the Local Government Board were laid before the Board, and directions given thereon, as follows:—

The following Letters from the Local Government Board and others were read by the Clerk, and directions given to answer them respectively to the following effect (or Orders made on them respectively, as follows:—)

The Board unanimously elected James Galbraith as Chairman for ensuing year. Walter S. Taylor Esq. as Vice Chairman and Mr. Park & Spelman as D. F. B.

Walter Shaw Taylor
Chairman—

Galway County Council Archives

The cases of provisional relief, and applications for relief, were considered and decided on, as set forth in the Application and Report Books.

| | | | |
|---|---|---|----|
| The number of provisional admissions to the Workhouse confirmed was | . | . | 10 |
| Ditto disallowed | . | . | - |
| The number of applicants admitted to the Workhouse was | . | . | 1 |

| | | | |
|--|---|---|---|
| The number of cases of provisional Out-door relief was | . | . | . |
| Do. in which relief was continued by the Guardians | . | . | . |
| The number of other applicants in the Relieving Officers' Books relieved by order of the Guardians was | . | . | . |

| | | | |
|--|---|---|---|
| The number of applicants for whom relief was not ordered | . | . | . |
|--|---|---|---|

The bonds and other securities in force were laid before the Guardians by the Clerk, together with his Report thereon, as follows: (this on the second Meeting after the Annual Election in every year.)

Galway County Council Archives

52

53

MINUTES OF PROCEEDINGS OF THE BOARD OF GUARDIANS OF THE

UNION, on Saturday the 28th day of March 1874.—continued.SUPPLEMENTAL SHEET—MEDICAL CHARITIES ACT, 14 & 15 Vic., cap. 68; and
NUISANCES REMOVAL AND DISEASES PREVENTION ACTS, 1848 & 1849.

An Estimate of Medicines, &c., required by the Medical Officer of the _____
Dispensary District, approved by the Committee of Management, was laid before the Board, with a Requisition from
the Committee for the supply of the same, and directions were given thereon, as follows:—

An Invoice of Medicines forwarded by the Contractor for the _____
Dispensary District, in pursuance of an Order of the Board in their Minutes of _____
having been received from him, the Clerk laid the Invoice before the Board, and was directed to forward the same
(or, reported that he had forwarded the same, as the case may be) to the Medical Officer of the District, retaining a
Copy of the Invoice for the use of the Guardians.

On Application of the Committee of Management of the _____
Dispensary District, the following supplies of Books, Stationery, Forms, or other Requisites, were ordered to be
supplied:—

Next Meeting of the Guardians to be held on _____ the _____ day of

_____ 187 .

Signed, _____
Clerk of the Union.

54

The following Accounts of Expenses (or, statement of Salaries due, as the case may be) under the Medical Charities Act were laid before the Board, and directions were given for Payment thereof, or such other directions as may be given :

Ardrahan Dispensary District.

| | | | |
|--------------------------------|-----------------------|-----------|------------|
| Account of <u>Dr. Kelly</u> | for <u>1/4 Salary</u> | Amount, £ | 30 " 0 " 0 |
| <u>Mr. George Taylor</u> | rent. Dispt | | 3 " 10 " 0 |
| <u>M^r. Connolly</u> | " " | | 3 " 10 " 0 |
| <u>Thos. Galbraith</u> | " " | | 3 " 10 " 0 |

Gort Dispensary

| | | |
|------------------------|-------------------|------------|
| <u>Dr. Nolan</u> | <u>1/4 Salary</u> | 25 " 0 " 0 |
| <u>Lat. W. Murtagh</u> | " " | 10 " 0 " 0 |

Knuwarra Dispensary

| | | |
|------------------|-------------------|------------|
| <u>Dr. Hynes</u> | <u>1/4 Salary</u> | 35 " 0 " 0 |
| do | rent of Dispt | 4 " 0 " 0 |
| do | Vaccination | 12 " 4 " 0 |

Walter Shaw Taylor
Chairman

[This at the end of each half-year, in pursuance of Articles 28 & 29 of the General Rules for Dispensary Districts, dated 16th December, 1853.] An Account of the Expenses incurred for the service of each Dispensary District in the Union for the half-year ended _____ 187 , having been submitted to the Board, the Clerk was directed to furnish to the Committee of each Dispensary District a Statement of all the Expenses of the District which have been included in the half-year's Accounts. The following is the Total Expenses incurred for each Dispensary District for the

| | |
|-----------------------|-------|
| half-year ended _____ | 187 . |
| _____ District, | £ |
| _____ District, | £ |

55

[This to be entered on the occasion of every appointment of a new Committee after the annual Election of Guardians, and on the occasion of any election to fill any vacancies in a Dispensary Committee.] The Board elected the following Ratepayers to be Members of the Committees of Management of the following Dispensary Districts, respectively:—the Clerk to make a Return accordingly to the Local Government Board and to issue the prescribed Notification to the Members elected, and to the Medical Officers of the respective Dispensary Districts, in pursuance of Articles 1, 2, and 3, of the General Regulations for Dispensary Districts. The Clerk was also directed to supply Check Books of Medical Relief Tickets (Forms E 1 and E 2), in pursuance of Article 27 of the Dispensary Regulations, to the New Members of Committees, namely:—

_____ Dispensary District, Mr. _____ of _____

The following Orders of the Local Government Board under the Medical Charities Act, were laid before the Board, and directions given thereon, as follows :

Order dated _____ (state subject.)

56

The following Letters on matters arising under the Medical Charities Act, or the Nuisances Removal and Diseases Prevention Acts, from the Local Government Board and others were read by the Clerk, and directions given to answer them respectively to the following effect (or Orders were made on them respectively, as follows:)

Read Letter from _____ dated _____ stating that

Galway County Council

Signed, _____ Clerk of the Union.

LOST UNION.

Population in 1871 - 20501

Present Net Annual Value, £43231/57

STATE of the Workhouse for the Week ending Saturday, the 28 day of March 1874

Table with columns for accommodation, age groups, and return of sick and lunatics. Includes sub-tables for Night Lodgers and remaining/dead statistics.

RETURN of DESTITUTE PERSONS relieved out of the Workhouse, as by Relief Lists, for the last Week, ended Saturday, the 28 day of March 1874, authenticated and laid before the Board of Guardians at this Meeting.

Table with columns for relief districts, number of cases, and persons relieved. Includes a 'TOTAL' row at the bottom.

COPY of MINUTES of Proceedings of the Board of Guardians, at a Meeting held on the 4th day of April 1874.

PRESENT: In the Chair— Other Guardians—

Walter Shawe Taylor Esq. J.P. Robert J. Lally Esq. J.P. Martin Deely P. G. Spelman and A. B. Nolan

The Minutes of last Meeting were read and signed.

58

Notices of Marriage between the parties hereunder-named having been received from the District Registrar by the Clerk, were duly read at the Board this day, in accordance with the 15th section of the 7 & 8 Vic., c. 81.

The Workhouse Register was produced, examined, and authenticated, from No. 3441 to No. 3453 both inclusive, by the signature of the Chairman and counter-signature of the Clerk.

The Out-door Relief Register was produced, examined, and authenticated, from No. — to No. — both inclusive, by the signature of the Chairman and counter-signature of the Clerk.

The Clerk's Report on the execution of Orders previously made by the Board was read, to the following effect:—



The Ledger was produced by the Clerk, posted up to the last day of Meeting, with the proper Debits and Credits as ordered on that day.

The Treasurer's Book of Receipts and Payments was produced, by which it appeared that there had been received during the week - - - - - £ 122. 12. 1

Paid during the week - - - - - £ 125. 9. 7

And that the Balance on the Account in favor the Guardians was £ 1203. 4. 3

The Book was signed by the Chairman.

The Weekly Balance-sheets of the several Collectors were laid before the Board, their accuracy having been first ascertained and authenticated by the Clerk.

59

The Lodgments made of Rates collected in the several Electoral Divisions appear to have been as follows:—

| Name of each Collector | Electoral Divisions arranged in Collectors' Districts | Amount Collected and Lodged | | | Total | | | Remaining | | | Total | | | | | |
|------------------------|---|-----------------------------|----|----|-------|----|----|-----------|----|----|-------|----|-----|----|---|--|
| | | £ | s. | d. | £ | s. | d. | £ | s. | d. | £ | s. | d. | | | |
| Mrs. Padden | Atamulivan | | | | | | | 12 | 9 | 11 | | | | | | |
| | Ballyshalan | | | | | | | 9 | 18 | 25 | | | | | | |
| | Beagh | | | | | | | 45 | 6 | 10 | | | | | | |
| | Bunehon | | | | | | | 2 | 19 | 2 | | | | | | |
| | Gahermore | | | | | | | 9 | 1 | 8 | | | | | | |
| | Gappan | | | | | | | | | 8 | 5 | | | | | |
| | Spous | | | | | | | 107 | 5 | 8 | | | | | | |
| | Loft | | | | | | | 109 | 17 | | | | | | | |
| | Kilblacany | | | | | | | 3 | 13 | 3 | | | | | | |
| | Killinure | | | | | | | 55 | 7 | 5 | | | | | | |
| | Kiltaton | | | | | | | 19 | 18 | 9 | | | | | | |
| | Kiltomas | | | | | | | 28 | 1 | 8 | | | | | | |
| | Minna | | | | | | | 162 | 9 | 3 | 566 | 17 | 5 | | | |
| Miss Taylor | Drasahau | | | | | | | 16 | 16 | 8 | | | | | | |
| | Castle Taylor | | | | | | | 18 | 17 | 4 | | | | | | |
| | Drumakoo | | | | | | | 110 | 10 | 2 | | | | | | |
| | Killuly | | | | | | | 47 | 12 | 3 | | | | | | |
| | Killeenavane | | | | | | | 16 | 18 | 9 | | | | | | |
| | Rahatome | | | | | | | 57 | 8 | 6 | | | | | | |
| | Shehanagh | | | | | | | 44 | 13 | 4 | 306 | 17 | - | | | |
| | | | | | | | | | | | | | 873 | 14 | 5 | |
| | From Produce &c | | | | | | | 39 | 2 | 6 | | | | | | |
| | TOTALS ... | | | | | | | | | | | | | | | |

NOTE—A Total is to be inserted in Red Ink at the foot of each Collector's District, as well as for the entire Union. Debit the Treasurer and Credit the several Electoral Divisions with the respective amounts lodged.

The Clerk's Account of petty Disbursements made by him since last Meeting, amounting to £ : : was produced and passed.

The following Books were exhibited by the Clerk, he having first ascertained the accuracy of the entries made therein by the Master of the Workhouse, and authenticated the same by his signature.

1. The Weekly Relief List and Abstract.
2. The Provision Check Accounts.
3. The Provision Receipt and Consumption Account.

By which it appeared that the cost of Provisions and Necessaries received during the week was

25 March - £ 13-19-3
28 March - 10-8-7
£ 24 7s. 10d.

| | | £ | s. | d. |
|----------|----------|--|----|-------|
| 25 March | £ 17-8-8 | Debit Provision Account, and Credit Invoice Account, | - | - |
| 28 " | 13-0-6 | The Cost of Provisions and Necessaries consumed was | - | - |
| | 30-9-2 | Debit Maintenance Account, and Credit Provision Account, | - | - |
| | | And the General average Cost of an Inmate for the week was | 3 | 6 |
| | | Average Cost in Infirmary | 4 | 1 |
| | | Average Cost in Fever Hospital | 5 | 5 1/2 |

The Master's estimate of Provisions and Necessaries required for the ensuing week was examined, and Orders were duly made for the several articles specified, namely:

43 lb Bread
13 " Meat
4 Sheep Heads
328 qts Milk
2 cut Sugar
1/2 gal Whisky
50 lbs D. Candles
2 cut Soap
47 lb potatoes

The following Books were also produced by the Clerk, their accuracy having been previously ascertained by him and authenticated by his Signature:—

1. The several Clothing Accounts.
2. The Medical Officers' Books.

The Out-door Relief Lists and Weekly Receipt and Expenditure Books of the several Relieving Officers were then produced by the Clerk, their accuracy having been previously ascertained by him, and authenticated by his Signature.

The Abstract of the Out-door Relief Lists was also produced by the Clerk, having been duly entered up by him for the last week, ended Saturday, the 28 day of March 1874, whereby it appeared that in that week the Total Expenditure in Out-door Relief was

| | £ | s. | d. |
|-------------------|----------|-----|-----|
| In Money, ... | ... | ... | ... |
| In Kind, ... | ... | ... | ... |
| Total, ... | £ | | |

Credit each Relieving Officer as per Receipt and Expenditure Book.

The requirements of each Relieving Officer for the ensuing week having been duly considered and estimated by the Board, cheques on the Treasurer, and Orders on Contractors were duly signed and delivered to each of them, of the following amounts and value, respectively:—

| Relief District. | Name of Relieving Officer. | By Cheque on Treasurer. | | By Order on Contractors. | | Relief District. | Name of Relieving Officer. | By Cheque on Treasurer. | | By Order on Contractors. | |
|------------------|----------------------------|-------------------------|-------|--------------------------|----------------|------------------|----------------------------|-------------------------|-------|--------------------------|----------------|
| | | £ | s. d. | Article and quantity. | Value. £ s. d. | | | £ | s. d. | Article and quantity. | Value. £ s. d. |
| No. I. | | | | | | Bt. forwd. | | | | | |
| No. II. | | | | | | No. X. | | | | | |
| No. III. | | | | | | No. XI. | | | | | |
| No. IV. | | | | | | No. XII. | | | | | |
| No. V. | | | | | | No. XIII. | | | | | |
| No. VI. | | | | | | No. XIV. | | | | | |
| No. VII. | | | | | | No. XV. | | | | | |
| No. VIII. | | | | | | No. XVI. | | | | | |
| No. IX. | | | | | | No. XVII. | | | | | |
| Carried forward, | | | | | | TOTAL, | | | | | |

Credit Treasurer with Cheques.

Debit each Relieving Officer with Cheques and Orders.

On the Report and recommendation of the Finance Committee, the following Bills, having been duly examined and found to be correct, and in accordance with the several orders, were directed to be paid, and Cheques for the several amounts were duly drawn on the Treasurer, and signed, namely:—

1. Clothing Account.

| | £ | s. | d. |
|----------------------------------|----|----|----|
| John Kennedy, Clothing Materials | 6 | 16 | - |
| P. H. Sheahan, do | 22 | 10 | 6 |

Debit Clothing Account, and Credit Treasurer with the several sums as above.

2. Establishment Account.

| | | | |
|------------------------|---|----|----|
| William Davis, Brushes | 6 | 14 | 11 |
|------------------------|---|----|----|

Debit Establishment Account, and Credit Treasurer with the several sums as above.

3. Workhouse Invoice Account.

| | | £ | s. | d. |
|-----------------|------------|----|----|----|
| L. J. Mangan | Great-meal | 17 | 9 | 8 |
| Edward Breen | Milk | 28 | 7 | 8 |
| Patrick Keelan | Milk | 53 | 19 | 5 |
| James Broderick | Quinn | 93 | 13 | 8 |

Debit Workhouse Invoice Account, and Credit Treasurer with the several sums as above.

Sundry 4. Out-door Relief Invoice Account.

| | | | | |
|---------------------------------------|-------------|----|-----|---|
| May Maloney Stacey | £ 3 14.9 | | | |
| May Maloney Groceries | £ 44. 10. 6 | 48 | 5 | 3 |
| Finchy & Keenan Expenses | | 3 | | |
| C. G. Young Maintenance to Wm. Kelly | 0 - 14. 1 | | | |
| P. H. Sheahan calls for Gut Dist. | 0. 5. . | | | |
| do. American cloth | 0. 6. 3 | | | |
| Martin Kealy Potatoes | 0. 9. 2 | | | |
| Martin Walsh Salt | 0 - 18. 11 | | | |
| John Kealy Repairs | 0 - 15. 0 | | | |
| Stephen Cash Salt | 0 - 12. 0 | | | |
| Francis Burke Coffins | 1 - 1. 8 | | | |
| And. Shill Failure's work | 1 - 14. 2 | | | |
| May McLannan money in lieu of latrine | 1. 19. 0 | 8. | 15. | 0 |

Credit Treasurer and Debit Out-door Relief Invoice Account with the several sums as above.

The Clerk's Report of Vaccination was read—(this on the first Meeting in every Month)—Number of successful cases:—

The Report of the Visiting Committee was read, and Orders were made thereon as follows:—

The Reports of the Master and other Officers were read, and Orders made thereon, as follows:—

The Master reported the sick lists as follows

| | Per. | Acum |
|----------------|------|------|
| Patrick Keelan | 26½ | 11½ |
| Jas. Broderick | 25¾ | 11½ |
| E. Broderick | 27 | 11 |

The following Orders of the Local Government Board were laid before the Board, and directions given thereon, as follows:—

The following Letters from the Local Government Board and others were read by the Clerk, and directions given to answer them respectively to the following effect (or Orders made on them respectively, as follows:—)

Circular from L.G. Board No. 65 M/74 31st March 1874
in reference to the annual appointment of Sanitary Committee & Wardens

Read letter from J. F. Kempster Esq. C.E. dated 2nd April 1874
with reference to improving the sewerage of the town
of Looe which he estimates will cost £124-0-0
and of sinking wells with three pumps for the
purpose of providing a supply of pure water for the
inhabitants which he estimates will cost £110-0-0

Ordered that a full Board be summoned for the
18th Inst. to take the matter into consideration

Received petition in favor of closing public houses
on Sundays from the Association for stopping the
sale of intoxicating liquors on Sundays which
was approved by the Board and signed in
their behalf by the Chairman

Ordered that the Relieving Officer inform a man
named Wynes from Looe that unless he takes
his child out of the workhouse before Saturday
next he will be proceeded against

Ordered that advertisements be issued for the
supply of pure new unskinned milk to the
workhouse from the 1st May 74 to 1st May 1875
or for two, three, or four years as the Guardians
may determine - Tenders will be received on the
18th Inst. from parties willing to contract for
quantities not less than 2 gallons daily

On the same day tenders will be received for the
grazing of the land of Fairy Hill from the
1st May 1874 to 30th April 1875 and for the
grazing of St. Patrick's Cemetery by sheep only
for the same period

Ordered that the Decree obtained against
James Broadrick at the late Galway Assizes
for the rent of Fairy Hill be executed on
Monday next unless Broadrick pays on that day

On the application of the Schottmushers leave
was given to allow her sister remain ^{with} her in
the workhouse for a few days

Walter Shaw Taylor
Chairman

le

67

The cases of provisional relief, and applications for relief, were considered and decided on, as set forth in the Application and Report Books.

| | | | | | |
|---|---|---|---|---|----|
| The number of provisional admissions to the Workhouse confirmed was | . | . | . | . | 13 |
| Ditto disallowed | . | . | . | . | — |
| The number of applicants admitted to the Workhouse was | . | . | . | . | — |

| | | | | | |
|--|---|---|---|---|---|
| The number of cases of provisional Out-door relief was | . | . | . | . | — |
| Do. in which relief was continued by the Guardians | . | . | . | . | — |
| The number of other applicants in the Relieving Officers' Books relieved by order of the Guardians was | . | . | . | . | — |

| | | | | | |
|--|---|---|---|---|---|
| The number of applicants for whom relief was not ordered | . | . | . | . | — |
|--|---|---|---|---|---|

The bonds and other securities in force were laid before the Guardians by the Clerk, together with his Report thereon, as follows: (this on the second Meeting after the Annual Election in every year.)

Galway County Council Archives

68

MINUTES OF PROCEEDINGS OF THE BOARD OF GUARDIANS OF THE UNION, on Saturday the 4th day of April 1874.—continued.

69

SUPPLEMENTAL SHEET—MEDICAL CHARITIES ACT, 14 & 15 Vic., cap. 68; and NUISANCES REMOVAL AND DISEASES PREVENTION ACTS, 1848 & 1849.

An Estimate of Medicines, &c., required by the Medical Officer of the Dispensary District, approved by the Committee of Management, was laid before the Board, with a Requisition from the Committee for the supply of the same, and directions were given thereon, as follows:—

An Invoice of Medicines forwarded by the Contractor for the Dispensary District, in pursuance of an Order of the Board in their Minutes of having been received from him, the Clerk laid the Invoice before the Board, and was directed to forward the same (or, reported that he had forwarded the same, as the case may be) to the Medical Officer of the District, retaining a Copy of the Invoice for the use of the Guardians.

On Application of the Committee of Management of the Dispensary District, the following supplies of Books, Stationery, Forms, or other Requisites, were ordered to be supplied:—

Galway County Council Archives

Next Meeting of the Guardians to be held on Saturday the 11th day of April 1874.

Signed, _____
Clerk of the Union.

The following Letters on matters arising under the Medical Charities Act, or the Nuisances Removal and Diseases Prevention Acts, from the Local Government Board and others were read by the Clerk, and directions given to answer them respectively to the following effect (or Orders were made on them respectively, as follows:)

Read Letter from _____ dated _____ stating that _____

Galway County

Signed, _____
Clerk of the Union.

Population in 1871: 20501

Present Net Annual Value, £ 44210-11-0

STATE of the Workhouse for the Week ending Saturday, the 4th day of April 1874

| Number of Inmates for which accommodation is provided | No. that can be accommodated in each building | Total No. in each building on the above date | Able-bodied | | Aged and Infirm persons, and adult persons, above 15 years of age, but not working | | Boys and Girls above 9 and under 15 years of age | | Children above 2 and under 9 years of age | Children above 2 and under 5 years of age | Infants under 2 years of age | RETURN OF SICK AND LUNATICS. | | OBSERVATIONS. | |
|---|---|--|-------------|-----------|--|-----------|--|----------|---|---|------------------------------|------------------------------|---|---|---|
| | | | Males | Fem. | Males | Fem. | Boys | Girls | | | | Total | No. in Hospital on the above date | | No. of Lunatics and Idiots in Workhouse on the above date |
| Workhouse | 729 | 147 | | | | | | | | | | | | | |
| Temporary Buildings | - | - | | | | | | | | | | | | | |
| Additional Workhouse | - | - | | | | | | | | | | | | | |
| Permanent Fever Hospital | 51 | 2 | | | | | | | | | | | | | |
| Fever Sheds | - | - | | | | | | | | | | | | | |
| Total | 780 | 149 | | | | | | | | | | | | | |
| Remaining on previous Saturday, as per last Return. | | | 8 | 18 | 36 | 49 | 6 | 5 | 8 | 12 | 8 | 150 | In Work-house Hospital 47 | In separate Wards, In Wards with other Inmates, 3 | |
| Admitted during the Week. | | | 9 | 3 | - | - | - | 1 | 1 | 1 | - | 16 | In Hospital 2 | | |
| Born | | | | | | | | | | | | | | | |
| TOTAL | | | 17 | 21 | 36 | 49 | 7 | 6 | 9 | 13 | 8 | 166 | TOTAL, 49 | TOTAL, 3 | |
| Discharged during the Week. | | | 7 | 5 | 1 | 1 | - | 1 | 1 | 1 | - | 17 | | | |
| Died. | | | | | | | | | | | | | | | |
| Total Discharged and Dead. | | | 7 | 5 | 1 | 1 | - | 1 | 1 | 1 | - | 17 | No. relieved during week 9 | 3 | 3 |
| REMAINING ON THE ABOVE DATE. | | | 10 | 16 | 35 | 48 | 7 | 5 | 8 | 12 | 8 | 149 | No. in Work-house at date 3 | | 3 |
| | | | | | | | | | | | | | No. at corresponding period last year 159 | | |

RETURN of DESTITUTE PERSONS relieved out of the Workhouse, as by Relief Lists, for the last Week, ended Saturday, the 4th day of April 1874, authenticated and laid before the Board of Guardians at this Meeting.

| Relief Districts | Destitute Persons relieved out of the Workhouse (under 10 Vic. c. 31, s. 1.) | | Destitute Persons relieved out of the Workhouse (but not comprised in Sec. 1.) | | Total relieved out of the Workhouse. | | Relief Districts | Destitute Persons relieved out of the Workhouse (under 10 Vic. c. 31, s. 1.) | | Destitute Persons relieved out of the Workhouse (but not comprised in Sec. 1.) | | Total relieved out of the Workhouse. | |
|------------------|--|---|--|---|--------------------------------------|---------|------------------|--|---|--|---|--------------------------------------|---------|
| | Number of Cases relieved | Number of Persons, including Applicant and Family dependent on him or her | Number of Cases relieved | Number of Persons, including Applicant and Family dependent on him or her | Cases | Persons | | Number of cases relieved. | Number of Persons, including Applicant and Family dependent on him or her | Number of cases relieved. | Number of Persons, including Applicant and Family dependent on him or her | Cases | Persons |
| No. I. | | | | | | | By forward, | | | | | | |
| No. II. | | | | | | | No. X. | | | | | | |
| No. III. | | | | | | | No. XI. | | | | | | |
| No. IV. | | | | | | | No. XII. | | | | | | |
| No. V. | | | | | | | No. XIII. | | | | | | |
| No. VI. | | | | | | | No. XIV. | | | | | | |
| No. VII. | | | | | | | No. XV. | | | | | | |
| No. VIII. | | | | | | | No. XVI. | | | | | | |
| No. IX. | | | | | | | No. XVII. | | | | | | |
| By forward, | | | | | | | TOTAL | | | | | | |

COPY of MINUTES of Proceedings of the Board of Guardians, at a Meeting held on Saturday the 11th day of April 1874.

PRESENT: In the Chair— James Galbraith Esq. J.P.
 Other Guardians— Walter Shaw Taylor J.P., Martin Daly
 Robert J. Latty J.P., Walter M. Keenan and
 John Gallinan
 (Dr. Bourke L.H.S.)

The Minutes of last Meeting were read and signed.

Notices of Marriage between the parties hereunder-named having been received from the District Registrar by the Clerk, were duly read at the Board this day, in accordance with the 15th section of the 7 & 8 Vic., c. 81.

The Workhouse Register was produced, examined, and authenticated, from No. 3454 to No. 3475 both inclusive, by the signature of the Chairman and counter-signature of the Clerk.

The Out-door Relief Register was produced, examined, and authenticated, from No. — to No. — both inclusive, by the signature of the Chairman and counter-signature of the Clerk.

The Clerk's Report on the execution of Orders previously made by the Board was read, to the following effect:—

The Ledger was produced by the Clerk, posted up to the last day of Meeting, with the proper Debits and Credits as ordered on that day.

The Treasurer's Book of Receipts and Payments was produced, by which it appeared that there had been received during the week - - - - - £ 345 17 5

Paid during the week - - - - - £ 391 10 3

And that the Balance on the Account in favour of the Guardians was £ 846 11 8

The Book was signed by the Chairman.

The Weekly Balance-sheets of the several Collectors were laid before the Board, their accuracy having been first ascertained and authenticated by the Clerk.

The Lodgments made of Rates collected in the several Electoral Divisions appear to have been as follows:—

| Name of each Collector | Electoral Divisions arranged in Collectors' Districts | Amount Collected and Lodged | | | Total | | | Remaining | | | Total | | | | |
|------------------------|---|-----------------------------|----|----|-------|----|----|-----------|----|-----|-------|----|-----|----|---|
| | | £ | s. | d. | £ | s. | d. | £ | s. | d. | £ | s. | d. | | |
| Mr. S. Sweeney | Admullion | | | | | | | 12 | 9 | 11 | | | | | |
| | Ballycahalan | | | | | | | 9 | 18 | 5 | | | | | |
| | Beagh | | | | | | | 45 | 6 | 10 | | | | | |
| | Bunahew | | | | | | | 2 | 19 | 2 | | | | | |
| | Bahunra | | | | | | | 9 | 1 | 8 | | | | | |
| | Bappard | | | | | | | " | 8 | 5 | | | | | |
| | Doonub | | | | | | | 107 | 5 | 8 | | | | | |
| | Coat | | | | | | | 109 | 17 | - | | | | | |
| | Kilheacanty | | | | | | | 3 | 13 | 3 | | | | | |
| | Killinny | | | | | | | 55 | 7 | 5 | | | | | |
| Miss. Doyle | Kiltinstown | | | | | | | 19 | 18 | 9 | | | | | |
| | Kiltinness | | | | | | | 28 | 1 | 8 | | | | | |
| | Keimona | | | | | | | 162 | 9 | 3 | 566 | 17 | 5 | | |
| | Adrahaw | 8 | 1 | 9 | | | | 8 | 14 | 11 | | | | | |
| | Cattle Doyle | 3 | 5 | 4 | | | | 15 | 12 | - | | | | | |
| | Stundess | - | 16 | 8 | | | | 109 | 13 | 6 | | | | | |
| | Killeely | 1 | 10 | 2 | | | | 46 | 2 | 1 | | | | | |
| Killeenawana | 1 | 2 | 10 | | | | 15 | 15 | 11 | | | | | | |
| Popatane | 8 | 18 | 2 | | | | 42 | 10 | 4 | | | | | | |
| Shehanagh | 11 | 2 | 9 | 34 | 17 | 8 | 33 | 10 | 7 | 271 | 19 | 4 | | | |
| TOTALS ... | | | | | | | | | | | | | 838 | 16 | 9 |

NOTE—A Total is to be inserted in Red Ink at the foot of each Collector's District, as well as for the entire Union. Debit the Treasurer and Credit the several Electoral Divisions with the respective amounts lodged.

70

The Clerk's Account of petty Disbursements made by him since last Meeting, amounting to £ : : was produced and passed.

The following Books were exhibited by the Clerk, he having first ascertained the accuracy of the entries made therein by the Master of the Workhouse, and authenticated the same by his signature.

1. The Weekly Relief List and Abstract.
2. The Provision Check Accounts.
3. The Provision Receipt and Consumption Account.

By which it appeared that the cost of Provisions and Necessaries received during the week was £ 29. 6 s. 4 d.

| | £ | s. | d. |
|--|----|----|-------|
| Debit Provision Account, and Credit Invoice Account, - - - - - | | | |
| The Cost of Provisions and Necessaries consumed was - - - - - | 30 | 11 | 3 |
| Debit Maintenance Account, and Credit Provision Account, - - - - - | | | |
| And the General average Cost of an Inmate for the week was - - - - - | | 3 | 6 |
| Average Cost in Infirmary - - - - - | | 4 | 3 |
| Average Cost in Fever Hospital - - - - - | | 5 | 5 1/2 |

The Master's estimate of Provisions and Necessaries required for the ensuing week was examined, and Orders were duly made for the several articles specified, namely:

1060 lbs Bread
 233 lbs Meat
 764 lbs Milk
 1/2 gal. Whiskey
 6 doz. Potatoes
 4 Sheep's Heads

The following Books were also produced by the Clerk, their accuracy having been previously ascertained by him and authenticated by his Signature:—

1. The several Clothing Accounts.
2. The Medical Officers' Books.

The Out-door Relief Lists and Weekly Receipt and Expenditure Books of the several Relieving Officers were then produced by the Clerk, their accuracy having been previously ascertained by him, and authenticated by his Signature.

The Abstract of the Out-door Relief Lists was also produced by the Clerk, having been duly entered up by him for the last week, ended Saturday, the 4th day of April 1874, whereby it appeared that in that week the Total Expenditure in Out-door Relief was

| | £ | s. | d. |
|------------------|---|----|----|
| In Money, | | | |
| In Kind, | | | |
| Total, | £ | | |

Credit each Relieving Officer as per Receipt and Expenditure Book.

The requirements of each Relieving Officer for the ensuing week: having been duly considered and estimated by the Board, cheques on the Treasurer, and Orders on Contractors were duly signed and delivered to each of them, of the following amounts and value, respectively:—

| Relief District. | Name of Relieving Officer. | By Cheque on Treasurer. | | By Order on Contractors. | | Relief District. | Name of Relieving Officer. | By Cheque on Treasurer. | | By Order on Contractors. | |
|------------------|----------------------------|-------------------------|-------|--------------------------|----------------|------------------|----------------------------|-------------------------|----------------|--------------------------|--|
| | | £ | s. d. | Article and quantity. | Value. £ s. d. | | | Article and quantity. | Value. £ s. d. | | |
| No. I. | | | | | | Bt. forwd. | | | | | |
| No. II. | | | | | | No. X. | | | | | |
| No. III. | | | | | | No. XI. | | | | | |
| No. IV. | | | | | | No. XII. | | | | | |
| No. V. | | | | | | No. XIII. | | | | | |
| No. VI. | | | | | | No. XIV. | | | | | |
| No. VII. | | | | | | No. XV. | | | | | |
| No. VIII. | | | | | | No. XVI. | | | | | |
| No. IX. | | | | | | No. XVII. | | | | | |
| Carried forward, | | | | | | TOTAL, | | | | | |

Credit Treasurer with Cheques.

Debit each Relieving Officer with Cheques and Orders.

On the Report and recommendation of the Finance Committee, the following Bills, having been duly examined and found to be correct, and in accordance with the several orders, were directed to be paid, and Cheques for the several amounts were duly drawn on the Treasurer, and signed, namely:—

1. Clothing Account.

| £ | s. | d. |
|---|----|----|
| | | |

Debit Clothing Account, and Credit Treasurer with the several sums as above.

2. Establishment Account.

Jim Ward Mason work

| £ | s. | d. |
|---|----|----|
| | 15 | - |

Debit Establishment Account, and Credit Treasurer with the several sums as above.

3. Workhouse Invoice Account.

Martin Healy - potatoes

£ s. d.

1 - -

Debit Workhouse Invoice Account, and Credit Treasurer with the several sums as above.

4. Outdoor Relief Invoice Account.

John D. Nolan, law costs

8 12 5

5. Law ce.

Credit Treasurer and Debit Outdoor Relief Invoice Account with the several sums as above.

The Clerk's Report of Vaccination was read—(this on the first Meeting in every Month)—Number of successful cases:—

The Report of the Visiting Committee was read, and Orders were made thereon as follows:—

Galway County Council Archives

The Reports of the Master and other Officers were read, and Orders made thereon, as follows:—

The Master reported the Milk Tubs as follows.

| | | | <u>Lat</u> | <u>Cream</u> |
|----------|---------|--|------------|--------------|
| Mr. P. | Milau | | 26½ | 137 |
| Mr. Jas. | Brodick | | 26½ | 117 |
| Mr. G. | Brodick | | 27 | 137 |

Ordered 2 Tons Straw for use of W. House

80

The following Orders of the Local Government Board were laid before the Board, and directions given thereon, as follows:—



The following Letters from the Local Government Board and others were read by the Clerk, and directions given to answer them respectively to the following effect (or Orders made on them respectively, as follows:—)

Galway County Council

Ordered That Sabrina Murphy be allowed the sum of Four pounds for clothes having received her passage from America

D. Nolan was allowed three days leave having arranged with D. Guinagh for the performance of his duties during his absence —
Edmund Wright

22

23

The cases of provisional relief, and applications for relief, were considered and decided on, as set forth in the Application and Report Books.

| | | | | | |
|---|---|---|---|---|----|
| The number of provisional admissions to the Workhouse confirmed was | - | - | - | - | 22 |
| Ditto disallowed | - | - | - | - | - |
| The number of applicants admitted to the Workhouse was | - | - | - | - | 22 |

| | | | | | |
|--|---|---|---|---|---|
| The number of cases of provisional Out-door relief was | - | - | - | - | - |
| Do. in which relief was continued by the Guardians | - | - | - | - | - |
| The number of other applicants in the Relieving Officers' Books relieved by order of the Guardians was | - | - | - | - | - |

| | | | | | |
|--|---|---|---|---|---|
| The number of applicants for whom relief was not ordered | - | - | - | - | - |
|--|---|---|---|---|---|

The bonds and other securities in force were laid before the Guardians by the Clerk, together with his Report thereon, as follows: (this on the second Meeting after the Annual Election in every year.)

Galway County Council Archives

84

MINUTES OF PROCEEDINGS OF THE BOARD OF GUARDIANS OF THE

805

UNION, on Saturday the 11 day of April 1874 continued.

SUPPLEMENTAL SHEET—MEDICAL CHARITIES ACT, 14 & 15 Vic., cap. 68; and
NUISANCES REMOVAL AND DISEASES PREVENTION ACTS, 1848 & 1849.

An Estimate of Medicines, &c., required by the Medical Officer of the _____
Dispensary District, approved by the Committee of Management, was laid before the Board, with a Requisition from
the Committee for the supply of the same, and directions were given thereon, as follows:—

An Invoice of Medicines forwarded by the Contractor for the _____
Dispensary District, in pursuance of an Order of the Board in their Minutes of _____
having been received from him, the Clerk laid the Invoice before the Board, and was directed to forward the same
(or, reported that he had forwarded the same, as the case may be) to the Medical Officer of the District, retaining a
Copy of the Invoice for the use of the Guardians.

On Application of the Committee of Management of the _____
Dispensary District, the following supplies of Books, Stationery, Forms, or other Requisites, were ordered to be
supplied:—

Next Meeting of the Guardians to be held on Saturday the 18 day of
April 1874

Signed, _____
Clerk of the Union.

Galway County Council Archives

The following Letters on matters arising under the Medical Charities Act, or the Nuisances Removal and Diseases Prevention Acts, from the Local Government Board and others were read by the Clerk, and directions given to answer them respectively to the following effect (or Orders were made on them respectively, as follows:)

Read Letter from _____ dated _____ stating that

Population in 1871 20501

YORK UNION.

Present Net Annual Value, £44210-11-0

STATE of the Workhouse for the Week ending Saturday, the 11th day of April 1874.

| Number of Inmates for which accommodation is provided | No. that can be accommodated in each building on the above date | Total No. in each building on the above date | Able-bodied | | Aged and Infirm persons, and adult persons, above 15 years of age, but not working | | Boys and Girls above 9 and under 15 years of age | | Children above 5 and under 9 years of age | Children above 2 and under 5 years of age | Infants under 2 years of age | Total | RETURN OF SICK AND LUNATICS. | | OBSERVATIONS. | | |
|---|---|--|-------------|-----------|--|-----------|--|----------|---|---|------------------------------|------------|---------------------------------------|---|------------------------------|----------|-----|
| | | | Males | Fem. | Males | Fem. | Boys | Girls | | | | | Number in Hospital on the above date | No. of Lunatics and Idiots in Workhouse on the above date | | | |
| Workhouse | 729 | 151 | | | | | | | | | | | | | | | |
| Temporary Buildings | | | | | | | | | | | | | | | | | |
| Additional Workhouse | | | | | | | | | | | | | | | | | |
| Permanent Fever Hospital | 51 | 4 | | | | | | | | | | | | | | | |
| Fever Sheds | | | | | | | | | | | | | | | | | |
| Total | 780 | 155 | | | | | | | | | | | | | | | |
| Remaining on previous Saturday, as per last Return. | | | 10 | 16 | 35 | 48 | 7 | 5 | 8 | 12 | 8 | 142 | In Work-house Hospital | 48 | In separate Wards | 3 | |
| Admitted during the Week. | | | 10 | 3 | 2 | " | 3 | 3 | 3 | 1 | " | 25 | In Hospital | 4 | In Wards with other Inmates, | 3 | |
| Born | | | " | " | " | " | " | " | " | " | " | " | | | | | |
| TOTAL | | | 20 | 19 | 37 | 48 | 10 | 8 | 11 | 13 | 8 | 174 | TOTAL | 52 | TOTAL | 3 | |
| Discharged during the Week. | | | 10 | 1 | " | 2 | 2 | 2 | 3 | 0 | 0 | 19 | NIGHT LODGERS. | | | | |
| Died. | | | | | | | | | | | | | Males | Females | Children under 15 | TOTAL | |
| Total Discharged and Dead. | | | 10 | 1 | " | 0 | 2 | 2 | 3 | 0 | 0 | 19 | No. relieved during week | 9 | 3 | 7 | 19 |
| REMAINING ON THE ABOVE DATE. | | | 10 | 18 | 37 | 48 | 8 | 6 | 8 | 13 | 7 | 155 | No. in Work-house at date | " | " | " | " |
| | | | | | | | | | | | | | No. at corresponding period last year | | | | 157 |

RETURN of DESTITUTE PERSONS relieved out of the Workhouse, as by Relief Lists, for the last Week, ended Saturday, the 11th day of April 1874, authenticated and laid before the Board of Guardians at this Meeting.

| Relief Districts | Destitute Persons relieved out of the Workhouse (under 10 Vic. c. 31, s. 1.) | | Destitute Persons relieved out of the Workhouse (but not comprised in Sec. 1.) | | Total relieved out of the Workhouse. | | Relief Districts | Destitute Persons relieved out of the Workhouse (under 10 Vic. c. 31, s. 1.) | | Destitute Persons relieved out of the Workhouse (but not comprised in Sec. 1.) | | Total relieved out of the Workhouse. | |
|------------------|--|---|--|--|--------------------------------------|---------|------------------|--|---|--|--|--------------------------------------|----------|
| | Number of cases relieved | Number of Persons, including Applicant and Family dependent on him or her | Number of cases relieved | Number of Persons, including Applicant and Family dependent on him or her. | Cases. | Persons | | Number of cases relieved. | Number of Persons, including Applicant and Family dependent on him or her | Number of cases relieved. | Number of Persons, including Applicant and Family dependent on him or her. | Cases. | Persons. |
| No. I. | | | | | | | Be. forward, | | | | | | |
| No. II. | | | | | | | No. X. | | | | | | |
| No. III. | | | | | | | No. XI. | | | | | | |
| No. IV. | | | | | | | No. XII. | | | | | | |
| No. V. | | | | | | | No. XIII. | | | | | | |
| No. VI. | | | | | | | No. XIV. | | | | | | |
| No. VII. | | | | | | | No. XV. | | | | | | |
| No. VIII. | | | | | | | No. XVI. | | | | | | |
| No. IX. | | | | | | | No. XVII. | | | | | | |
| Car. forward, | | | | | | | TOTAL | | | | | | |

COPY of MINUTES of Proceedings of the Board of Guardians, at a Meeting held on Saturday the 18th day of April 1874.

PRESENT: In the Chair— James Gallbraith Esqre J. P.
 Other Guardians—
 Walter S. Taylor. James Cahiff. Martin Bealy
 Danl. Geoghegan. Arthur Alexander
 Owen Sweeney. Walter M. Keilaw. John Burke
 Patk B. Spelman. John Geoghegan
 Dr. Brodie. S. G. B. J. attended

Signed, _____ Clerk of the Union.

Notices of Marriage between the parties hereunder-named having been received from the District Registrar by the Clerk, were duly read at the Board this day, in accordance with the 15th section of the 7 & 8 Vic., c. 81.

The Workhouse Register was produced, examined, and authenticated, from No. 3476 to No. 3488 both inclusive, by the signature of the Chairman and counter-signature of the Clerk.
The Out-door Relief Register was produced, examined, and authenticated, from No. _____ to No. _____ both inclusive, by the signature of the Chairman and counter-signature of the Clerk.
The Clerk's Report on the execution of Orders previously made by the Board was read, to the following effect:—

The Ledger was produced by the Clerk, pecked up to the last day of Meeting, with the proper Debits and Credits as ordered on that day.
The Treasurer's Book of Receipts and Payments was produced, by which it appeared that there had been received during the week - - - - - £ 74 " 13 " 2
Paid during the week - - - - - £ 159 " 9 " 9
And that the Balance on the Account in favor the Guardians was - £ 761 " 15 " 1
The Book was signed by the Chairman.
The Weekly Balance-sheets of the several Collectors were laid before the Board, their accuracy having been first ascertained and authenticated by the Clerk.

The Lodgments made of Rates collected in the several Electoral Divisions appear to have been as follows:—

| Name of each Collector | Electoral Divisions arranged in Collectors' Districts | Amount Collected and Lodged | | | Total | | | Remaining | | | Total | | | | | |
|------------------------|---|-----------------------------|----|---------------|-------|----|----|-----------|----|----|-------|----|----|-----|----|---|
| | | £ | s. | d. | £ | s. | d. | £ | s. | d. | £ | s. | d. | | | |
| Thos Hardiman | Ardamullivan | 2 | 11 | . | | | | 19 | 18 | 11 | | | | | | |
| | Ballycophalan | 8 | 2 | . | | | | 6 | 15 | . | | | | | | |
| | Bredagh | . | . | . | | | | 45 | 6 | 10 | | | | | | |
| | Bumahow | 1 | 14 | 8 | | | | 1 | 4 | 6 | | | | | | |
| | Cabersmore | 1 | 5 | 4 | | | | 7 | 16 | 4 | | | | | | |
| | Cappard | . | . | . | | | | . | 8 | 5 | | | | | | |
| | Dooris | 3 | . | 4 | | | | 102 | 17 | 10 | | | | | | |
| | Gort | 4 | 14 | 14 | | | | 96 | 12 | 4 | | | | | | |
| | Kilbeacanty | . | . | . | | | | 3 | 13 | 3 | | | | | | |
| | Killing | 30 | 11 | 7 | | | | 24 | 8 | 6 | | | | | | |
| | Kilbannon | 2 | 13 | 4 | | | | 17 | 5 | 5 | | | | | | |
| | Kilthomas | . | . | . | | | | 28 | 1 | 1 | | | | | | |
| | Kinwarra | 11 | 2 | 3 | 58 | 0 | 8 | 149 | 2 | 8 | 508 | 16 | 9 | | | |
| | Michl Taylor | Ardrahan | | | | | | | 8 | 14 | 11 | | | | | |
| Castle Taylor | | | | | | | | 15 | 12 | . | | | | | | |
| Drumaco | | | | | | | | 109 | 13 | 6 | | | | | | |
| Killely | | | | | | | | 46 | 2 | 1 | | | | | | |
| Killeharra | | | | | | | | 15 | 15 | 11 | | | | | | |
| Rahaspie | | | | | | | | 40 | 10 | 4 | | | | | | |
| Shehanagh | | | | | | | | 33 | 10 | 7 | 271 | 19 | 4 | | | |
| TOTALS ... | | | | | | | | | | | | | | 780 | 16 | 1 |

NOTE—A Total is to be inserted in Red Ink at the foot of each Collector's District, as well as for the entire Union. Debit the Treasurer and Credit the several Electoral Divisions with the respective amounts lodged.

92

The Clerk's Account of petty Disbursements made by him since last Meeting, amounting to £ " : " : " was produced and passed.

The following Books were exhibited by the Clerk, he having first ascertained the accuracy of the entries made therein by the Master of the Workhouse, and authenticated the same by his signature.

1. The Weekly Relief List and Abstract.
2. The Provision Check Accounts.
3. The Provision Receipt and Consumption Account.

By which it appeared that the cost of Provisions and Necessaries received during the week was

£ 27 s. 4 d. //

| | £ | s. | d. |
|--|----|----|--------|
| Debit Provision Account, and Credit Invoice Account, - - - - - | | | |
| The Cost of Provisions and Necessaries consumed was - - - - - | 34 | 18 | 7 |
| Debit Maintenance Account, and Credit Provision Account, - - - - - | | | |
| And the General average Cost of an Inmate for the week was - - - - - | | 4 | 0 1/4 |
| Average Cost in Infirmary - - - - - | | 4 | 9 |
| Average Cost in Fever Hospital - - - - - | | 4 | 11 1/4 |

The Master's estimate of Provisions and Necessaries required for the ensuing week was examined, and Orders were duly made for the several articles specified, namely:

- 990 lbs. Bread
- 280 lbs. Oat meal
- 280 lbs. whole meal
- 114 lbs. meat
- 4 - Sheeps Heads
- 1/2 chest - Tea
- 2 doz - Port wine
- 2 doz - Marsala
- 1/2 Gal - whiskey
- 4 doz - Porter
- 4 doz - Eggs -

The following Books were also produced by the Clerk, their accuracy having been previously ascertained by him and authenticated by his Signature :-

1. The several Clothing Accounts.
2. The Medical Officers' Books.

The Out-door Relief Lists and Weekly Receipt and Expenditure Books of the several Relieving Officers were then produced by the Clerk, their accuracy having been previously ascertained by him, and authenticated by his Signature.

The Abstract of the Out-door Relief Lists was also produced by the Clerk, having been duly entered up by him for the last week, ended Saturday, the day of 187, whereby it appeared that in that week the Total Expenditure in Out-door Relief was

| | £ | s. | d. |
|----------------------|----------|----|----|
| In Money, | | | |
| In Kind, | | | |
| Total, | £ | | |

Credit each Relieving Officer as per Receipt and Expenditure Book.

93

The requirements of each Relieving Officer for the ensuing week having been duly considered and estimated by the Board, cheques on the Treasurer, and Orders on Contractors were duly signed and delivered to each of them, of the following amounts and value, respectively :-

| Relief District | Name of Relieving Officer | By Cheque on Treasurer. £ s. d. | By Order on Contractors. | | Relief District | Name of Relieving Officer | By Cheque on Treasurer. £ s. d. | By Order on Contractors. | | | | | |
|------------------|---------------------------|------------------------------------|--------------------------|-------------------|-----------------|---------------------------|------------------------------------|--------------------------|-------------------|--------|--|--|--|
| | | | Article and quantity. | Value. £ s. d. | | | | Article and quantity | Value. £ s. d. | | | | |
| No. I. | | | | | Bt. forwd. | | | | | | | | |
| No. II. | | | | | No. X. | | | | | | | | |
| No. III. | | | | | No. XI. | | | | | | | | |
| No. IV. | | | | | No. XII. | | | | | | | | |
| No. V. | | | | | No. XIII. | | | | | | | | |
| No. VI. | | | | | No. XIV. | | | | | | | | |
| No. VII. | | | | | No. XV. | | | | | | | | |
| No. VIII. | | | | | No. XVI. | | | | | | | | |
| No. IX. | | | | | No. XVII. | | | | | | | | |
| Carried forward, | | | | | | | | | | TOTAL, | | | |

Credit Treasurer with Cheques.

Debit each Relieving Officer with Cheques and Orders.

On the Report and recommendation of the Finance Committee, the following Bills, having been duly examined and found to be correct, and in accordance with the several orders, were directed to be paid, and Cheques for the several amounts were duly drawn on the Treasurer, and signed, namely :-

1. Clothing Account.

| £ | s. | d. |
|---|----|----|
| | | |
| | | |
| | | |

Debit Clothing Account, and Credit Treasurer with the several sums as above.

2. Establishment Account.

| £ | s. | d. |
|---|----|----|
| | | |
| | | |
| | | |

Debit Establishment Account, and Credit Treasurer with the several sums as above.

3. Workhouse Invoice Account.

L. S. Mangan

| £ | s. | d. |
|----|----|----|
| 11 | 12 | 10 |

Debit Workhouse Invoice Account, and Credit Treasurer with the several sums as above.

4. Out-door Relief Invoice Account.

Credit Treasurer and Debit Out-door Relief Invoice Account with the several sums as above.

The Clerk's Report of Vaccination was read—(this on the first Meeting in every Month)—Number of successful cases:—

The Report of the Visiting Committee was read, and Orders were made thereon as follows:—

Galway County Council Archives

The Reports of the Master and other Officers were read, and Orders made thereon, as follows:—

The master reported the milk tests as follows

| | See. | Cream |
|-------------------|--------|--------|
| Mr. P. Neilan | 26 3/4 | 14 1/4 |
| .. Jas. Broderick | 26 1/2 | 11 1/2 |
| .. L. Broderick | 27 1/2 | 14 1/2 |

Ordered for use of W. House 3 lbs Tobacco

The following Orders of the Local Government Board were laid before the Board, and directions given thereon, as follows:—

A Deputation of the Rate Payers of the Town of Gort having waited upon the Board and strongly objected to the carrying out of the Sewerage works recommended ^{by Mr. Deerpeter} in his report dated April 2nd /74 — On the ground that in their opinion the work should be executed under Grand Jury Presentment. They at the same time expressed their approval of the proposed linking of the Pumps thereby providing a supply of pure water for the use of the Inhabitants.

Resolved. That the Clerk be directed to issue notices inviting tenders from persons willing to undertake the sinking of the pumps at so much per foot. Tenders to be received this day fortnight.

The following Letters from the Local Government Board and others were read by the Clerk, and directions given to answer them respectively to the following effect (or Orders made on them respectively, as follows:—)

Ordered. That advertisements be issued for Milk Contracts for this day fortnight by hand bills in town.

Ordered. That advertisements be issued by hand bills to be posted in Kiwarra, Ballinderreen, Tulcolgan Ardahan & Gort for the erection of the boundary wall to the Kiwarra Grave yard according to plan and Specification to be seen at the W. House & received on this day fortnight.

Resolved. That each member of the Board be a member of the Finance Committee for ensuing year and that cheques be presented only once a fortnight.

Resolved. That each member of the Board be a member of the visiting Committee for ensuing year.

The consideration of the tenders for the grazing of the cemetery and Fairy Hill postponed until this day fortnight.

John J. Abbott

98

99

The cases of provisional relief, and applications for relief, were considered and decided on, as set forth in the Application and Report Books.

| | | | | |
|---|---|---|---|----|
| The number of provisional admissions to the Workhouse confirmed was | - | - | - | 10 |
| Ditto disallowed | - | - | - | - |
| The number of applicants admitted to the Workhouse was | - | - | - | - |

| | | | | |
|--|---|---|---|---|
| The number of cases of provisional Out-door relief was | - | - | - | - |
| Do. in which relief was continued by the Guardians | - | - | - | - |
| The number of other applicants in the Relieving Officers' Books relieved by order of the Guardians was | - | - | - | - |

| | | | | |
|--|---|---|---|---|
| The number of applicants for whom relief was not ordered | - | - | - | - |
|--|---|---|---|---|

The bonds and other securities in force were laid before the Guardians by the Clerk, together with his Report thereon, as follows: (this on the second Meeting after the Annual Election in every year.)

Galway County Council Archives

The following Accounts of Expenses (or, statement of Salaries due, as the case may be) under the Medical Charities Act were laid before the Board, and directions were given for Payment thereof, or such other directions as may be given :

Dispensary District.
Account of Mr. _____ for _____ Amount, £ _____

[This at the end of each half-year, in pursuance of Articles 23 & 29 of the General Rules for Dispensary Districts, dated 16th December, 1853.]

An Account of the Expenses incurred for the service of each Dispensary District in the Union for the half-year ended _____ 187 , having been submitted to the Board, the Clerk was directed to furnish to the Committee of each Dispensary District a Statement of all the Expenses of the District which have been included in the half-year's Accounts. The following is the Total Expenses incurred for each Dispensary District for the

| | |
|-----------------------------|-------------|
| half-year ended _____ 187 . | |
| _____ District, | £ |
| _____ District, | £ |

Galway County Archives

[This to be entered on the occasion of every appointment of a new Committee, after the annual Election of Guardians, and on the occasion of any vacancies in a Dispensary Committee.]

The Board elected the following Ratepayers to be Members of the Committees of Management of the following Dispensary Districts, respectively:—the Clerk to make a Return accordingly to the Local Government Board and to issue the prescribed Notification to the Members elected, and to the Medical Officers of the respective Dispensary Districts, in pursuance of Articles 1, 2, and 3, of the General Regulations for Dispensary Districts. The Clerk was also directed to supply Check Books of Medical Relief Tickets (Forms E 1 and E 2), in pursuance of Article 27 of the Dispensary Regulations, to the New Members of Committees, namely:—

Ardraban Dispensary District, Mr. Rate-payers Elected

- | | |
|---------------------|-----------|
| Mr. Richard Burke - | Lisnien |
| Mrs. Curmiffen - | Trahasane |
| Mrs. Taylor - | Ardraban |
| Mrs. Kilan - | Lealp |
| Peter Birmingham - | Coxtown |
-
- | | |
|---------------------------|------------|
| <u>Gort Dispsy</u> | |
| Wm. Birmingham - | Gort |
| Rev. J. M. Shannon P.P. - | Gort |
| John Geoghegan - | Ballygegan |
| L. J. Mangam - | Gort |
| John Forrest - | Gort |
| Richd. Molony - | Gort |
| Martin G. Lynam - | Shragh |
-
- | | |
|------------------------|------------|
| <u>Kinwarra Dispsy</u> | |
| Rev. J. Y. Moran | Kiltolgan |
| Wm. O'Dea | Keaneon |
| John Curtin | Imiree |
| Pat Curtin | Keo |
| Stephen Leech | Loughcurra |
| John Loya | Kinwarra |
| Henry Glanagan | Hermitage |
| Mark Blake | Blough |
| Martin Whelan | Imiree |

The following Orders of the Local Government Board under the Medical Charities Act, were laid before the Board, and directions given thereon, as follows :

Order dated _____ (state subject.)

Resolved that the Board of Guardians be the Committee of the Laissez Authority -

104

The following Letters on matters arising under the Medical Charities Act, or the Nuisances Removal and Diseases Prevention Acts, from the Local Government Board and others were read by the Clerk, and directions given to answer them respectively to the following effect (or Orders were made on them respectively, as follows:)

Read Letter from _____ dated _____ stating that

Resolved that each of the Dispensary Committees be the sanitary and sewer authority in each of the Dispensary Districts - James Galbraith

Galway County Council

Signed, _____ Clerk of the Union.

Population in 1871 - 20501

Present Net Annual Value, £ _____

STATE of the Workhouse for the Week ending Saturday, the 18th day of April 1874.

| Number of Inmates for which accommodation is provided | No. that can be accommodated in each building | Total No. in each building on the above date | Able-bodied | | Aged and Infirm persons, and adult persons, above 15 years of age, but not working | | Boys and Girls above 9 and under 15 years of age. | | Children above 5 and under 9 years of age. | Children above 2 and under 5 years of age. | Infants under 2 years of age. | RETURN OF SICK AND LUNATICS. | | OBSERVATIONS. |
|---|---|--|-------------|------|--|------|---|-------|--|--|-------------------------------|---------------------------------------|--|---|
| | | | Males | Fem. | Males | Fem. | Boys | Girls | | | | Number in Hospital on the above date. | No. of Lunatics and Idiots in Workhouse on the above date. | |
| Workhouse | 729 | 148 | | | | | | | | | | | | |
| Temporary Buildings | | | | | | | | | | | | | | |
| Additional Workhouse | | | | | | | | | | | | | | |
| Permanent Fever Hospital | 57 | 3 | | | | | | | | | | | | |
| Fever Sheds | | | | | | | | | | | | | | |
| Total | 780 | 151 | | | | | | | | | | | | |
| Remaining on previous Saturday, as per last Return. | | | 10 | 18 | 37 | 48 | 8 | 6 | 8 | 13 | 7 | 155 | In Workhouse Hospital 49 | In separate Wards, In Wards with other inmates, 3 |
| Admitted during the Week. | | | 5 | - | - | 2 | - | - | - | - | - | 7 | 3 | 3 |
| Born | | | | | | | | | | | | | | |
| TOTAL | | | 15 | 18 | 37 | 50 | 8 | 6 | 8 | 13 | 7 | 162 | TOTAL, 52 | TOTAL, 3 |
| Discharged during the Week. | | | 8 | | | | | | 1 | | | 9 | | |
| Died. | | | 1 | | | | | | | | | 2 | | |
| Total Discharged and Dead. | | | 9 | | | | | | 1 | | | 11 | | |
| REMAINING ON THE ABOVE DATE. | | | 6 | 17 | 37 | 50 | 8 | 6 | 8 | 12 | 7 | 151 | No. Relieved during week 5 | No. in Workhouse at date - |
| | | | | | | | | | | | | | No. at corresponding period last year 159 | |

RETURN of DESTITUTE PERSONS relieved out of the Workhouse, as by Relief Lists, for the last Week, ended Saturday, the day of _____ 1874, authenticated and laid before the Board of Guardians at this Meeting.

| Relief Districts | Destitute Persons relieved out of the Workhouse (under 10 Vic., c. 31, s. 1.) | | Destitute Persons relieved out of the Workhouse (but not comprised in Sec. 1.) | | Total relieved out of the Workhouse. | | Relief Districts | Destitute Persons relieved out of the Workhouse (under 10 Vic., c. 31, s. 1.) | | Destitute Persons relieved out of the Workhouse (but not comprised in Sec. 1.) | | Total relieved out of the Workhouse. | |
|------------------|---|---|--|---|--------------------------------------|---------|------------------|---|---|--|---|--------------------------------------|----------|
| | Number of cases relieved | Number of Persons, including Applicant and Family dependent on him or her | Number of cases relieved | Number of Persons, including Applicant and Family dependent on him or her | Cases | Persons | | Number of cases relieved | Number of Persons, including Applicant and Family dependent on him or her | Number of cases relieved | Number of Persons, including Applicant and Family dependent on him or her | Cases | Persons. |
| No. I. | | | | | | | Bt. forward, | | | | | | |
| No. II. | | | | | | | No. X. | | | | | | |
| No. III. | | | | | | | No. XI. | | | | | | |
| No. IV. | | | | | | | No. XII. | | | | | | |
| No. V. | | | | | | | No. XIII. | | | | | | |
| No. VI. | | | | | | | No. XIV. | | | | | | |
| No. VII. | | | | | | | No. XV. | | | | | | |
| No. VIII. | | | | | | | No. XVI. | | | | | | |
| No. IX. | | | | | | | No. XVII. | | | | | | |
| Car. forward, | | | | | | | TOTAL | | | | | | |

COPY of MINUTES of Proceedings of the Board of Guardians, at a Meeting held on Saturday the 25th day of April 1874.

PRESENT: In the Chair— James Galbraith Esqre
 Other Guardians— Francis Farcey Andrew W. Nolan
 Patrick C. Shelman

The Minutes of last Meeting were read and signed.

106

Notices of Marriage between the parties hereunder-named having been received from the District Registrar by the Clerk, were duly read at the Board this day, in accordance with the 15th section of the 7 & 8 Vic., c. 81.

The Workhouse Register was produced, examined, and authenticated, from No. 3459 to No. 3504 both inclusive, by the signature of the Chairman and counter-signature of the Clerk.
 The Out-door Relief Register was produced, examined, and authenticated, from No. ~ to No. ~ both inclusive, by the signature of the Chairman and counter-signature of the Clerk.
 The Clerk's Report on the execution of Orders previously made by the Board was read, to the following effect:—

The Ledger was produced by the Clerk, posted up to the last day of Meeting, with the proper Debits and Credits as ordered on that day.
 The Treasurer's Book of Receipts and Payments was produced, by which it appeared that there had been received during the week - - - - - £ 86 - 5 - 10
 Paid during the week - - - - - £ 21 - 2 - 6
 And that the Balance on the Account in favor of the Guardians was £ 826 - 18 - 5
 The Book was signed by the Chairman.
 The Weekly Balance-sheets of the several Collectors were laid before the Board, their accuracy having been first ascertained and authenticated by the Clerk.

Galway County Council

107

The Lodgments made of Rates collected in the several Electoral Divisions appear to have been as follows:—

| Name of each Collector. | Electoral Divisions arranged in Collectors' Districts. | Collected and Lodged. | | | Total. | | | Remaining. | | | Total. | | |
|-------------------------|--|-----------------------|----|----|--------|----|-----|------------|----|-----|--------|----|----|
| | | £ | s. | d. | £ | s. | d. | £ | s. | d. | £ | s. | d. |
| Pho. Gardiner | Ardamullin | - | - | - | - | - | - | 9 | 18 | 11 | - | - | - |
| | Ballycabalan | 2 | 15 | 3 | - | - | - | 6 | 15 | - | - | - | - |
| | Beagh | - | - | - | - | - | - | 43 | 15 | 2 | - | - | - |
| | Bunmahon | - | - | - | - | - | - | 1 | 4 | 6 | - | - | - |
| | Caher more | - | - | - | - | - | - | 7 | 12 | - | - | - | - |
| | Cappard | - | - | - | - | - | - | - | 8 | 5 | - | - | - |
| | Doorus | 1 | 7 | 6 | - | - | - | 70 | 12 | 6 | - | - | - |
| | Gort | 8 | 10 | 8 | - | - | - | 89 | 18 | 1 | - | - | - |
| | Kilkeacanty | - | - | - | - | - | - | 3 | 13 | 3 | - | - | - |
| | Killinny | - | 7 | 4 | - | - | - | 22 | 6 | 5 | - | - | - |
| | Kiltarfon | - | - | - | - | - | - | 16 | 9 | 3 | - | - | - |
| | Kilthomas | - | - | 7 | - | - | - | 9 | 16 | 8 | - | - | - |
| Kinvarra | 2 | 9 | 7 | 15 | 10 | 11 | 117 | 6 | 2 | 399 | 16 | 4 | |
| Mr. Taylor | Adrahan | - | - | - | - | - | - | 8 | 14 | 11 | - | - | - |
| | Castle Taylor | - | - | - | - | - | - | 15 | 12 | - | - | - | - |
| | Drumagod | 69 | 14 | 3 | - | - | - | 39 | 19 | 3 | - | - | - |
| | Killuley | - | - | - | - | - | - | 46 | 2 | 1 | - | - | - |
| | Killenavan | 1 | 0 | 8 | - | - | - | 14 | 15 | 3 | - | - | - |
| | Rahatane | - | - | - | - | - | - | 42 | 10 | 4 | - | - | - |
| Stekhanagh | - | - | - | 70 | 14 | 11 | 33 | 10 | 7 | 201 | 4 | 5 | |
| | | | | 86 | 5 | 10 | | | | 601 | 0 | 9 | |

Note—A total is to be inserted in Red Ink at the foot of each Collector's District, as well as for the entire Union.
 Debit the Treasurer and Credit the several Electoral Divisions with the respective amounts lodged.

The Clerk's Account of Petty Disbursements made by him since last Meeting, amounting to £

The following Books were exhibited by the Clerk, he having first ascertained the accuracy of the entries made therein by the Master of the Workhouse, and authenticated the same by his signature:—

1. The Weekly Relief List and Abstract.
2. The Provision Check Accounts.
3. The Provision Receipt and Consumption Account.

By which it appeared that the Cost of Provisions and Necessaries received during the Week was £ 28 s. 12 d. 8

Debit Provision Account and Credit Invoice Account.
 The Cost of Provisions and Necessaries consumed was - 30 : 13 : 6
 Debit Maintenance Account and Credit Provision Account.
 And the General Average Cost of an Inmate for the Week was : 3 : 6 1/2
 Average Cost in Infirmary, - - - - - : 4 : 3
 Average Cost in Fever Hospital, - - - - - : 5 : 3

The Master's Estimate of Provisions and Necessaries required for the ensuing Week was examined, and Orders were duly made for the several articles specified, namely:—

10 50 lbs. Bread
 108 lbs. Meat
 4 Sheep's Heads
 57 1/2 Gals. Milk
 90 3/4 Gals. Milk
 48 Gals. Milk
 2 doz. Eggs
 1/2 Gal. Whisky
 3 doz. Porter
 2 lb. L. Sugar

The following Books were also produced by the Clerk, their accuracy having been previously ascertained by him, and authenticated by his signature:—

1. The several Clothing Accounts.
2. The Medical Officers' Books.

The Outdoor Relief Lists and Weekly Receipt and Expenditure Books of the several Relieving Officers were then produced by the Clerk, their accuracy having been previously ascertained by him, and authenticated by his signature.

The Abstract of the Outdoor Relief Lists was also produced by the Clerk, having been duly entered up by him for the last Week ended Saturday, the day of 187, whereby it appeared that in that Week the Total Expenditure in Outdoor Relief was

In money, - - - - -
 In kind, - - - - -
 Total, - - - - - £

Credit each Relieving Officer, as per Receipt and Expenditure Book.

The requirements of each Relieving Officer for the ensuing week having been duly considered and estimated by the Board, cheques on the Treasurer, and Orders on Contractors were duly signed and delivered to each of them, of the following amounts and value, respectively:—

| Name of Relieving Officer | By Cheque on Treasurer. £ s. d. | By Order on Contractors. | | Relief District | Name of Relieving Officer. | By Cheque on Treasurer. £ s. d. | By Order on Contractors. | |
|---------------------------|------------------------------------|--------------------------|-------------------|-----------------|----------------------------|------------------------------------|--------------------------|-------------------|
| | | Article and quantity. | Value. £ s. d. | | | | Article and quantity | Value. £ s. d. |
| | | | | | | | | |
| | | | | | Bt. forwd. | | | |
| | | | | | No. X. | | | |
| | | | | | No. XI. | | | |
| | | | | | No. XII. | | | |
| | | | | | No. XIII. | | | |
| | | | | | No. XIV. | | | |
| | | | | | No. XV. | | | |
| | | | | | No. XVI. | | | |
| | | | | | No. XVII. | | | |
| Carried forward, | | | | | TOTAL, | | | |

Credit Treasurer with Cheques.

Debit each Relieving Officer with Cheques and Orders.

On the Report and recommendation of the Finance Committee, the following Bills, having been duly examined and to be correct, and in accordance with the several orders, were directed to be paid, and Cheques for the several were duly drawn on the Treasurer, and signed, namely:—

1. Clothing Account.

Marbin Healy - Boots & Shoes £ 8 s. 6 d.

Debit Clothing Account, and Credit Treasurer with the several sums as above.

2. Establishment Account.

Marbin Healy

Debit Establishment Account, and Credit Treasurer with the several sums as above.

3. Workhouse Invoice Account.

L. S. Mangan - Bread & Meal

| £ | s. | d. |
|----|----|----|
| 11 | 12 | 2 |

Debit Workhouse Invoice Account, and Credit Treasurer with the several sums as above.

4. Out-door Relief Invoice Account.

Credit Treasurer and Debit Out-door Relief Invoice Account with the several sums as above.

The Clerk's Report of Vaccination was read—(this on the first Meeting in every Month)—Number of successful cases:—

The Report of the Visiting Committee was read, and Orders were made thereon as follows:—

The Reports of the Master and other Officers were read, and Orders made thereon, as follows:—

The master reported the milk tests as follows

| | Sae. | cream |
|--------------------|--------|--------|
| Mr. Neilan | 26 1/2 | 12 |
| Mr. Jas. Broderick | 26 1/2 | 10 3/4 |
| Mr. E. Broderick | 27 | 12 3/4 |

The following Orders of the Local Government Board were laid before the Board, and directions given thereon, as follows:—

The following Letters from the Local Government Board and others were read by the Clerk, and directions given to answer them respectively to the following effect (or Orders made on them respectively, as follows:—)

Letter from L. G. Board - 24th April/74
No. 10734 - Stating that they had received a report from Mr. Brodie after his recent inspection of the Gort W. House, which was generally speaking of a satisfactory character. And the only matter to which he draws attention being the necessity for painting the house this season. The outside, not having been painted since 1867 and the inside ~~side~~ since 1870 -

A Specification enclosed in letter by the L. G. B.

Ordered. Tenders to be advertised for the outside painting for two coats. The Guardians supplying all material except brushes

Ordered that Clerk & Master demand possession of Fairy Hill Farm the 30th April & 1st and 2nd May

Ordered Biddy Burns get an old shawl to enable her leave the Work House

Ordered - for Porter's use one Lance pen / Teapot / Shoe brush / clothes brush + 2 Glass Tumbler

Walter Shaw
Chairman

116

MINUTES OF PROCEEDINGS OF THE BOARD OF GUARDIANS OF THE Gort UNION, on Saturday the 25 day of April 1874.—continued. 117

SUPPLEMENTAL SHEET—MEDICAL CHARITIES ACT, 14 & 15 Vic., cap. 68; and NUISANCES REMOVAL AND DISEASES PREVENTION ACTS, 1848 & 1849.

An Estimate of Medicines, &c., required by the Medical Officer of the _____ Dispensary District, approved by the Committee of Management, was laid before the Board, with a Requisition from the Committee for the supply of the same, and directions were given thereon, as follows:--

An Invoice of Medicines forwarded by the Contractor for the _____ Dispensary District, in pursuance of an Order of the Board in their Minutes of _____ having been received from him, the Clerk laid the Invoice before the Board, and was directed to forward the same (or, reported that he had forwarded the same, as the case may be) to the Medical Officer of the District, retaining a Copy of the Invoice for the use of the Guardians.

On Application of the Committee of Management of the _____ Dispensary District, the following supplies of Books, Stationery, Forms, or other Requisites, were ordered to be supplied:--

Next Meeting of the Guardians to be held on _____ the _____ day of

_____ 187 .

Signed, _____
Clerk of the Union.

Galway County Council Archives

120

The following Letters, on matters arising under the Medical Charities Act, or the Nuisances Removal and Diseases Prevention Acts, from the Local Government Board and others were read by the Clerk, and directions given to answer them respectively to the following effect (or Orders were made on them respectively, as follows:)

Read Letter from _____ dated _____ stating that

Galway County Council

Signed, _____
Clerk of the Union.

Population in 1871 20501

Present Net Annual Value, £42210-11-0

STATE of the Workhouse for the Week ending Saturday, the 25 day of April 1874.

| Number of inmates for which accommodation is provided | No. that can be accommodated in each building | Total No. in each building on the above date | Able-bodied | | Aged and Infirm persons, and adult persons, above 15 years of age, but not working | | Boys and Girls above 9 and under 15 years of age | | Children above 5 and under 9 years of age | Children above 2 and under 5 years of age | Infants under 2 years of age | RETURN OF SICK AND LUNATICS. | | OBSERVATIONS. | | |
|---|---|--|-------------|------|--|------|--|-------|---|---|------------------------------|--------------------------------------|---|---------------|---|-----|
| | | | Males | Fem. | Males | Fem. | Boys | Girls | | | | Number in Hospital on the above date | No. of Lunatics and Idiots in Workhouse on the above date | | | |
| Workhouse | 729 | 143 | | | | | | | | | | | | | | |
| Temporary Buildings | - | - | | | | | | | | | | | | | | |
| Additional Workhouse | - | - | | | | | | | | | | | | | | |
| Permanent Fever Hospital | 57 | 3 | | | | | | | | | | | | | | |
| Fever Sheds | - | - | | | | | | | | | | | | | | |
| Total | 786 | 146 | | | | | | | | | | | | | | |
| Remaining on previous Saturday, as per last Return. | | | 6 | 17 | 37 | 50 | 8 | 6 | 8 | 12 | 7 | 15 | In Work-house Hospital | 41 | In separate Wards, In Wards with other inmates, | 3 |
| Admitted during the Week. | | | 7 | 3 | 4 | - | - | 1 | - | 1 | - | - | In Fever Hospital | 3 | | |
| Born | | | - | - | - | - | - | - | - | - | - | - | | | | |
| TOTAL | | | 13 | 20 | 41 | 50 | 8 | 7 | 9 | 13 | 7 | 15 | TOTAL | 46 | TOTAL | |
| Discharged during the Week. | | | 8 | 3 | 4 | 3 | 1 | 1 | 1 | 1 | - | - | | | | |
| Died | | | - | - | - | - | - | - | - | - | - | - | | | | |
| Total Discharged and Dead. | | | 8 | 3 | 4 | 3 | 1 | 1 | 1 | 1 | - | - | No. Relieved during week | 9 | | 9 |
| REMAINING ON THE ABOVE DATE. | | | 5 | 17 | 37 | 47 | 7 | 6 | 8 | 12 | 7 | 14 | No. in Work-house at date | - | | - |
| | | | | | | | | | | | | | No. at corresponding period last year | | | 162 |

RETURN of DESTITUTE PERSONS relieved out of the Workhouse, as by Relief Lists, for the last Week, ended Saturday, the 25 day of April 1874, authenticated and laid before the Board of Guardians at this Meeting.

| No. of Districts | Destitute Persons relieved out of the Workhouse (under 10 Vic. c. 31, s. 1.) | | Destitute Persons relieved out of the Workhouse (but not comprised in Sec. 1.) | | Total relieved out of the Workhouse. | | Relief Districts | Destitute Persons relieved out of the Workhouse (under 10 Vic. c. 31, s. 1.) | | Destitute Persons relieved out of the Workhouse (but not comprised in Sec. 1.) | | Total relieved out of the Workhouse. | |
|------------------|--|---|--|---|--------------------------------------|---------|------------------|--|---|--|---|--------------------------------------|---------|
| | Number of cases relieved | Number of Persons, including Applicant and Family dependent on him or her | Number of cases relieved | Number of Persons, including Applicant and Family dependent on him or her | Cases | Persons | | Number of cases relieved | Number of Persons, including Applicant and Family dependent on him or her | Number of cases relieved | Number of Persons, including Applicant and Family dependent on him or her | Cases | Persons |
| No. I. | | | | | | | Bk forward, | | | | | | |
| No. II. | | | | | | | No. X. | | | | | | |
| No. III. | | | | | | | No. XI. | | | | | | |
| No. IV. | | | | | | | No. XII. | | | | | | |
| No. V. | | | | | | | No. XIII. | | | | | | |
| No. VI. | | | | | | | No. XIV. | | | | | | |
| No. VII. | | | | | | | No. XV. | | | | | | |
| No. VIII. | | | | | | | No. XVI. | | | | | | |
| No. IX. | | | | | | | No. XVII. | | | | | | |
| Ar. forward, | | | | | | | TOTAL | | | | | | |

COPY of MINUTES of Proceedings of the Board of Guardians, at a Meeting held on Saturday the 2nd day of May 1874.

PRESENT: In the Chair— James Galbraith Esqre—
Other Guardians—
Walter T. Taylor. Andrew N. Nolan
Martin Coen. Walter M. Milan. Patrick Spelman
Michael Staunton

122
 Notices of Marriage between the parties hereunder-named having been received from the District Registrar by the Clerk, were duly read at the Board this day, in accordance with the 15th section of the 7 & 8 Vic., c. 81.

The Workhouse Register was produced, examined, and authenticated, from No. 3505 to No. 3509 both inclusive, by the signature of the Chairman and counter-signature of the Clerk.

The Out-door Relief Register was produced, examined, and authenticated, from No. — to No. — both inclusive, by the signature of the Chairman and counter-signature of the Clerk.

The Clerk's Report on the execution of Orders previously made by the Board was read, to the following effect:—

The Ledger was produced by the Clerk, posted up to the last day of Meeting, with the proper Debits and Credits as ordered on that day.

The Treasurer's Book of Receipts and Payments was produced, by which it appeared that there had been received during the week - - - - - £ 93 .. 14 .. 9

Paid during the week - - - - - £ 73 .. 17 .. 7

And that the Balance on the Account in favour the Guardians was £ 920 .. 13 .. 2

The Book was signed by the Chairman.

The Weekly Balance-sheets of the several Collectors were laid before the Board, their accuracy having been first ascertained and authenticated by the Clerk.

The Lodgments made of Rates collected in the several Electoral Divisions appear to have been as follows:—

| Name of each Collector | Electoral Divisions arranged in Collectors' Districts | Amount Collected and Lodged | | | Total | | | Remaining | | | Total | | | | | |
|------------------------|---|-----------------------------|----|----|-------|----|----|-----------|----|-----|-------|----|-----|-----|----|----|
| | | £ | s. | d. | £ | s. | d. | £ | s. | d. | £ | s. | d. | | | |
| Thos. Hardiman | Ardaraulliva | - | - | - | - | - | - | 9 | 18 | 11 | - | - | - | | | |
| | Ballypeataton | - | - | - | - | - | - | 6 | 13 | 8 | - | - | - | | | |
| | Meagh | 1 | 11 | 8 | - | - | - | 43 | 15 | 2 | - | - | - | | | |
| | Beunahow | - | - | - | - | - | - | 1 | 4 | 6 | - | - | - | | | |
| | Cabernore | - | 4 | 4 | - | - | - | 7 | 12 | - | - | - | - | | | |
| | Cappard | - | - | - | - | - | - | - | 8 | 5 | - | - | - | | | |
| | Doorus | 32 | 5 | 4 | - | - | - | 66 | 5 | 7 | - | - | - | | | |
| | Coat | 6 | 14 | 3 | - | - | - | 88 | 19 | 5 | - | - | - | | | |
| | Killicounty | - | - | - | - | - | - | - | - | - | - | - | - | - | | |
| | Killinny | 2 | 2 | 1 | - | - | - | 21 | 7 | 7 | - | - | - | | | |
| | Kiltarton | - | 16 | 2 | - | - | - | 16 | 6 | 5 | - | - | - | | | |
| Kilthomas | 18 | 4 | 5 | - | - | - | 9 | 16 | 8 | - | - | - | | | | |
| Kimara | 31 | 16 | 6 | - | - | - | 93 | 14 | 9 | 113 | 7 | 2 | 385 | 15 | 6 | |
| Michl. Taylor | Ardrahan | - | - | - | - | - | - | 8 | 4 | 11 | - | - | - | | | |
| | Castle Taylor | - | - | - | - | - | - | 15 | 12 | - | - | - | - | | | |
| | Drumaco | - | - | - | - | - | - | 39 | 19 | 3 | - | - | - | | | |
| | Killeely | - | - | - | - | - | - | 46 | 2 | 1 | - | - | - | | | |
| | Killeenavara | - | - | - | - | - | - | 14 | 15 | 3 | - | - | - | | | |
| | Naahasau | - | - | - | - | - | - | 42 | 10 | 4 | - | - | - | | | |
| | Shehanagh | - | - | - | - | - | - | 33 | 10 | 7 | - | - | - | 201 | 4 | 5 |
| TOTALS ... | | | | | 93 | 14 | 9 | | | | | | | 586 | 19 | 11 |

NOTE—A Total is to be inserted in Red Ink at the foot of each Collector's District, as well as for the entire Union. Debit the Treasurer and Credit the several Electoral Divisions with the respective amounts lodged.

The Clerk's Account of petty Disbursements made by him since last Meeting, amounting to £ : : , was produced and passed.

The following Books were exhibited by the Clerk, he having first ascertained the accuracy of the entries made therein by the Master of the Workhouse, and authenticated the same by his signature.

1. The Weekly Relief List and Abstract.
2. The Provision Check Accounts.
3. The Provision Receipt and Consumption Account.

By which it appeared that the cost of Provisions and Necessaries received during the week was £ 29 s. 15 d. 9

| | | | |
|--|---|----|---------|
| | £ | s. | d. |
| Debit Provision Account, and Credit Invoice Account, | - | - | - |
| The Cost of Provisions and Necessaries consumed was | - | - | 30 2 11 |
| Debit Maintenance Account, and Credit Provision Account, | - | - | - |
| And the General average Cost of an Inmate for the week was | - | - | 3 7 |
| Average Cost in Infirmary | - | - | 4 3 |
| Average Cost in Fever Hospital | - | - | 3 9 1/2 |

The Master's estimate of Provisions and Necessaries required for the ensuing week was examined, and Orders were duly made for the several articles specified, namely:

10 20 lbs Bread.
 109 lbs. meat
 4 Sheep's Heads
 58 Gals Milk
 8 1/2 Gals Milk
 46 3/4 Gals Milk
 1 1/2 doz - Eggs
 1/2 Gal - Whiskey
 2 Sticks - arrot
 6 lbs Moulds Bannocks

The following Books were also produced by the Clerk, their accuracy having been previously ascertained by him and authenticated by his Signature :-

1. The several Clothing Accounts.
2. The Medical Officers' Books.

The Out-door Relief Lists and Weekly Receipt and Expenditure Books of the several Relieving Officers were then produced by the Clerk, their accuracy having been previously ascertained by him, and authenticated by his Signature.

The Abstract of the Out-door Relief Lists was also produced by the Clerk, having been duly entered up by him for the last week, ended Saturday, the day of 187, whereby it appeared that in that week the Total Expenditure in Out-door Relief was

| | | | |
|------------------|-----|-----|-----|
| | £ | s. | d. |
| In Money, | ... | ... | ... |
| In Kind, | ... | ... | ... |
| Total, | £ | | |

Credit each Relieving Officer as per Receipt and Expenditure Book.

The requirements of each Relieving Officer for the ensuing week having been duly considered and estimated by the Board, cheques on the Treasurer, and Orders on Contractors were duly signed and delivered to each of them, of the following amounts and value, respectively:—

| Relief District | Name of Relieving Officer | By Cheque on Treasurer. | | By Order on Contractors. | | Relief District | Name of Relieving Officer. | By Cheque on Treasurer. | | By Order on Contractors. | |
|------------------|---------------------------|-------------------------|-------|--------------------------|----------------|-----------------|----------------------------|-------------------------|-------|--------------------------|----------------|
| | | £ | s. d. | Article and quantity. | Value. £ s. d. | | | £ | s. d. | Article and quantity | Value. £ s. d. |
| No. I. | | | | | | Bt. forwd. | | | | | |
| No. II. | | | | | | No. X. | | | | | |
| No. III. | | | | | | No. XI. | | | | | |
| No. IV. | | | | | | No. XII. | | | | | |
| No. V. | | | | | | No. XIII. | | | | | |
| No. VI. | | | | | | No. XIV. | | | | | |
| No. VII. | | | | | | No. XV. | | | | | |
| No. VIII. | | | | | | No. XVI. | | | | | |
| No. IX. | | | | | | No. XVII. | | | | | |
| Carried forward, | | | | | | | TOTAL, | | | | |

Credit Treasurer with Cheques.

Debit each Relieving Officer with Cheques and Orders.

On the Report and recommendation of the Finance Committee, the following Bills, having been duly examined and found to be correct, and in accordance with the several orders, were directed to be paid, and Cheques for the several amounts were duly drawn on the Treasurer, and signed, namely:—

1. Clothing Account.

| | | | |
|--|---|----|----|
| | £ | s. | d. |
| | | | |
| | | | |
| | | | |

Debit Clothing Account, and Credit Treasurer with the several sums as above.

2. Establishment Account.

| | | | |
|--|---|----|----|
| | £ | s. | d. |
| | | | |
| | | | |
| | | | |

Debit Establishment Account, and Credit Treasurer with the several sums as above.

m6

3. Workhouse Invoice Account.

£ s. d.

Debit Workhouse Invoice Account, and Credit Treasurer with the several sums as above.

Lundaries 4. ~~Out-door Relief Invoice Account.~~

| | | | | |
|-----------------------------|---------|---|----|----|
| Y. Hardiman B.O. Expenses. | | 3 | . | . |
| Lavinia Murphy - Emigration | | 4 | . | . |
| M. Finneral - Weighing Hay | 3 - 0 | | | |
| P. Molony - Shoes on Horse | 6 .. 0 | | | |
| P. Ford. Straw | 8 .. 6 | | | |
| Y. Ward. Masoury | 18 .. 0 | | | |
| S. Waly. Plator | 18 .. 0 | | | |
| Mrs. Hynes - Lin Work | 2 - 4 | 2 | 15 | 10 |

Credit Treasurer and Debit Out-door Relief Invoice Account with the several sums as above.

The Clerk's Report of Vaccination was read—(this on the first Meeting in every Month)—Number of successful cases:—

The Report of the Visiting Committee was read, and Orders were made thereon as follows:—

127

The Reports of the Master and other Officers were read, and Orders made thereon, as follows:—

The Master reported milk tests as follows

| | | |
|------------------|--------|--------|
| | Lac. | Cream |
| Mr. Neilan | 27 | 10 3/4 |
| " Jas. Broderick | 25 | 9 3/4 |
| " Edw. Broderick | 26 1/2 | 10 1/2 |

Ordered - 4 cwt. of Guano

The following Orders of the Local Government Board were laid before the Board, and directions given thereon, as follows:—

Sealed order from L.G.B. consenting to a sum of four pounds being granted to Sabina Murphy to assist in defraying her passage to America

The following Letters from the Local Government Board and others were read by the Clerk, and directions given to answer them respectively to the following effect (or Orders made on them respectively, as follows:—)

The tender of Michl. Fitzgerald was accepted for the building of the Boundary Wall + Piers (according to specification), round Kinsarra Old grave yard for the sum of £65-0-0

The tender of Michael Meath was accepted for the sinking of two pumps in the town of Gort at the rate of ten shillings per foot. Half the amount of the week's work to be paid.

Ordered. That milk be advertised again for this day week for one half new milk and one half pure skimmed milk at per gal. each + resolved if we dont get new milk on that day at about 10d. per gal. we buy four cows. If that Mr. Neilan + Mr. G. O'Ghegan be requested to purchase same

A Letter having been received from Mr. Morgan objecting to fortnightly payments ordered. Cheques be issued once a week

I beg to give notice that I will bring forward a resolution that Mr. Trally's salary be increased to £140-0-0
Signed - Walter S. Taylor
James Subbrath

The cases of provisional relief, and applications for relief, were considered and decided on, as set forth in the Application and Report Books.

| | | | | |
|---|---|---|---|---|
| The number of provisional admissions to the Workhouse confirmed was | . | . | . | 5 |
| Ditto disallowed | . | . | . | |
| The number of applicants admitted to the Workhouse was | . | . | . | 7 |

| | | | | |
|--|---|---|---|---|
| The number of cases of provisional Out-door relief was | . | . | . | . |
| Do. in which relief was continued by the Guardians | . | . | . | . |
| The number of other applicants in the Relieving Officers' Books relieved by order of the Guardians was | . | . | . | . |

The number of applicants for whom relief was not ordered

The bonds and other securities in force were laid before the Guardians by the Clerk, together with his Report thereon, as follows: (this on the second Meeting after the Annual Election in every year.)

Galway County Council Archives

The following Accounts of Expenses (or, statement of Salaries due, as the case may be) under the Medical Charities Act were laid before the Board, and directions were given for Payment thereof, or such other directions as may be given :

Dispensary District.
Account of Mr. _____ for _____ Amount, £ _____

At a meeting of Gort Dispy District present - Walter S. Taylor - Dean Birmingham + P. C. Spelman. Resolved that Walter S. Taylor be Chairman for ensuing year. Dean Birmingham, vice Chairman & that P. C. Spelman be Secy & L. S. Mangon assistant Secretary
James Subbeath

[This at the end of each half-year, in pursuance of Articles 28 & 29 of the General Rules for Dispensary Districts, dated 16th December, 1853.] An Account of the Expenses incurred for the service of each Dispensary District in the Union for the half-year ended _____ 187, having been submitted to the Board, the Clerk was directed to furnish to the Committee of each Dispensary District a Statement of all the Expenses of the District which have been included in the half-year's Accounts. The following is the Total Expenses incurred for each Dispensary District for the

| | |
|-----------------------|-------------|
| half-year ended _____ | 187 . |
| _____ District, | £ |
| _____ District, | £ |

[This to be entered on the occasion of every appointment of a new Committee after the annual Election of Guardians, and on the occasion of any election to fill any vacancies in a Dispensary Committee.] The Board elected the following Ratepayers to be Members of the Committees of Management of the following Dispensary Districts, respectively:—the Clerk to make a Return accordingly to the Local Government Board and to issue the prescribed Notification to the Members elected, and to the Medical Officers of the respective Dispensary Districts, in pursuance of Articles 1, 2, and 3, of the General Regulations for Dispensary Districts. The Clerk was also directed to supply Check Books of Medical Relief Tickets (Forms E 1 and E 2), in pursuance of Article 27 of the Dispensary Regulations, to the New Members of Committees, namely:—

Dispensary District, Mr. _____ of _____

The following Orders of the Local Government Board under the Medical Charities Act, were laid before the Board, and directions given thereon, as follows :

Order dated _____ (state subject.)