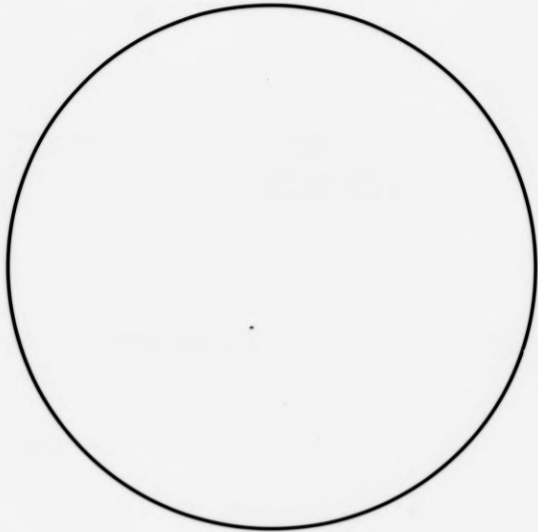


**START OF ROLL**

Galway County Council Archives

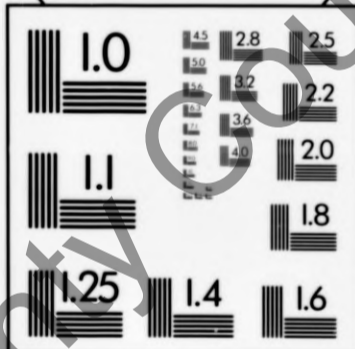
PLANETARY MICRO COPY TEST CHART (11 X 14")  
PM - PMC



POINT SIZE

|                    |   |
|--------------------|---|
| 4                  | Z35g 1j87 Y08i Zndr                         |
| 6                  | Hg47j W9pa9 A7o7q Ge92                      |
| 8                  | Su1xi 33q7n Oelvf 4ef8k                     |
| 10                 | 2xbiy Gmn0c<br>Y5a5o E1f9g                  |
| 12                 | 7n34a K2b8t<br>D6fmh 9ss9d                  |
| 14                 | Wcuzl L1cdg<br>6Y3sl Okjdg<br><b>FUTURA</b> |
| <b>NEWS GOTHIC</b> |   |
| 14                 | K2b8t Okjdg<br>4ef8k Gmn0c                  |
| 12                 | Zlo6x Ge92<br>7n34a 6Y3sl                   |
| 10                 | Y0r8j A7o7q<br>Oelvf 2xbiy                  |
| 8                  | 9ss9d L1cdg<br>33q7n E1f9g                  |
| 6                  | Z35lg Hq47j Su1xi Y5a5                      |
| 4                  | D6fmh Wcuzl 1j87                            |

POINT SIZE



|    |                           |
|----|---------------------------|
| 4  | Jfvo Ansd Ov38 Gc2hc Bv1P |
| 6  | 8t1zx Wobnk C6Jfm Zm79a   |
| 8  | T1whz 2h4oz bunYr Dm5z5   |
| 10 | KP7Yc Rho9t Umkh9 Ecafd   |
| 12 | C6Jfm Zm79a 3s43l iskrY   |
| 14 | Oz7h9 B5e1P Wo8nk 8tizx   |

SERIF (BASKERVILLE) SIZE SANS SERIF (MICROFONT) POINT

150mm

6"

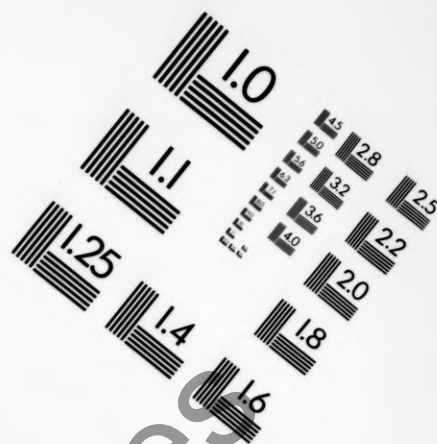
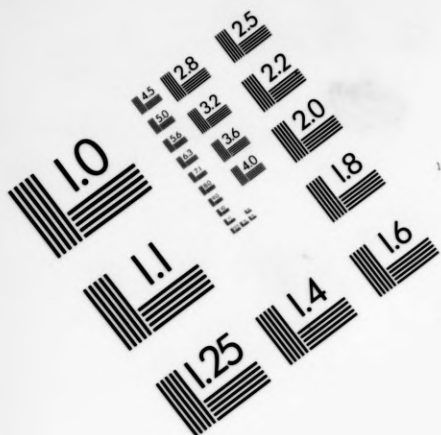
PRECISION<sup>SM</sup> RESOLUTION TARGETS

The Microfilm Shop

Tel: (024) 7638 3998

Fax: (024) 7638 2319



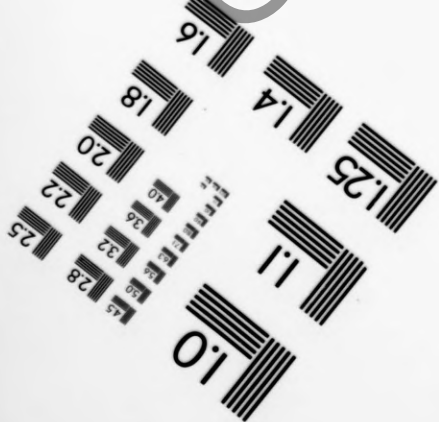
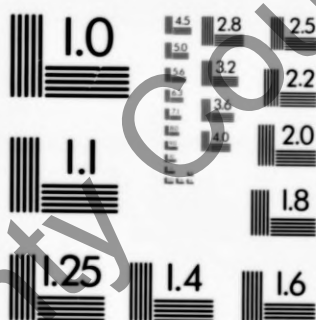


PRECISION<sup>SM</sup> RESOLUTION TARGETS

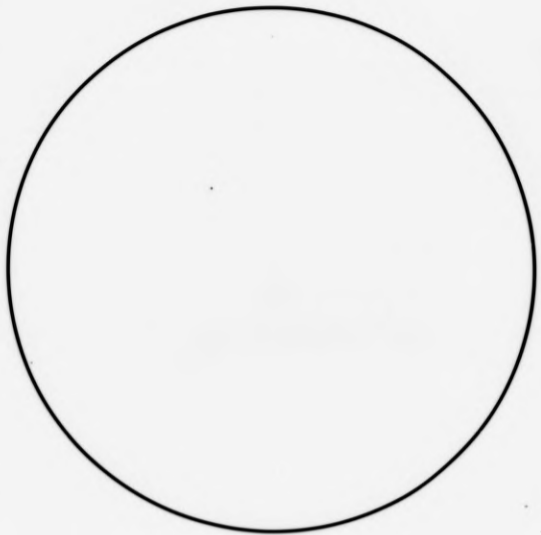
*The Microfilm Shop*

Tel: (024) 7638 3998

Fax: (024) 7638 2319



PM-PLN 11"x14"  
PLANETARY PHOTOGRAPHIC



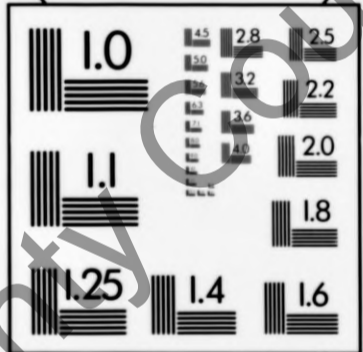
150mm

6"

POINT SIZE

4 Z35g 1sb7 Y0b8 Z0b8  
6 Hg47j W9pa9 A7a7q Ge92  
8 Su1xi 33q7n Oelvf 4ef8k  
10 2xbiy Gmn0c  
Y5a5o E1t9g  
12 7n34a K2b8t  
D6fmh 9ss9d  
14 Wcuzl L1cdg  
6Y3sl Okjdg  
**FUTURA**  
**NEWS GOTHIC**  
K2b8t Okjdg  
14 4ef8k Gmn0c  
12 Zl06x Ge92  
7n34a 6Y3sl  
10 Y0r8j A7a7q  
Oelvf 2xbiy  
8 9ss9d L1cdg  
33q7n E1t9g  
6 Z35g Hq47j Su1xi Y5a5  
4 D6fmh Wcuzl 1sb7 W9pa9

POINT SIZE



POINT SIZE SANS SERIF (MICROFONT)  
SERIF (BASKERVILLE)

4 Jkvo Anhd 0z79b G0z0c B0z1P  
6 IZC6B U5W7P P65SB 0IK0G  
8 XMBBO HWEKH XYAHQ SIDDS  
10 VILNU MZHSF XMBBO HWEKH  
12 66jfm Zm79a 3s43l iskrY I26FRKM EB7AU FUDWM B00NF  
14 Oz7h9 B5e IP Wo8nk 8tizx I4C9E83 B18AJ Z7QYI 0KJDG

PRECISION<sup>MS</sup> RESOLUTION TARGETS

The Microfilm Shop

Telephone: (0203) 383998/381196  
Fax: (0203) 382319

**12X**

Galway County Council Arch



G01/12/

GORT POOR LAW UNION – SUMMARY LIST

---

**Gort Poor Law Union  
Archive Collection  
Summary List**

**G01/12/**

© Galway County Council

All Rights Reserved.

No part of this film may be reproduced or transmitted  
in any form without the permission of  
Galway County Council

Microfilm first produced 2008



**Board of Guardian Minutes**

|            |   |
|------------|---|
| G01/12/1-2 | Missing   |
| G01/12/3   | 8 June 1844 - 5 July 1845   |
| G01/12/4   | Missing See Rough Minutes GS01/12/109   |
| G01/12/5   | 3 April 1846 – 26 March 1847  |
| G01/12/6   | 2 April 1847 – 28 January 1848  |
| G01/12/7   | 4 February 1848 – 1 December 1848   |
| G01/12/8   | Missing See Rough Minutes G01/12/113  |
| G01/12/9   | 19 October 1849 – 30 July 1850  |
| G01/12/10  | 6 August 1850 - 24 March 1851   |
| G01/12/11  | 31 March 1851 - 20 October 1851   |
| G01/12/12  | Missing See Rough Minutes G01/12/117  |
| G01/12/13  | 25 May 1852 – 22 November 1852  |
| G01/12/14  | November 1852 – 9 May 1853  |
| G01/12/15  | 16 May 1853 – 24 October 1853   |
| G01/12/16  | 31 October 1853 – 3 April 1954, CLOSED due to fragile physical condition      |
| G01/12/17  | 17 April 1854 – 9 October 1854  |
| G01/12/18  | 16 October 1854 – 9 April 1855  |
| G01/12/19  | 16 April 1855 - 4 October 1855  |
| G01/12/20  | 18 October 1855 - 27 March 1856   |
| G01/12/21  | 29 March 1856 – 7 August 1856 - CLOSED due to fragile physical condition      |
| G01/12/22  | 2 October 1856 – 21 March 1857  |
| G01/12/23  | 2 April 1857 – 24 September 1857  |
| G01/12/24  | 8 October 1857 – 1 March 1858   |
| G01/12/25  | 6 April 1858 – 28 September 1858  |
| G01/12/26  | 2 October 1858 – 29 March 1859  |
| G01/12/27  | 5 April 1859 – 17 September 1859 - CLOSED due to fragile physical condition   |
| G01/12/28  | Missing See Rough Minutes G01/12/134  |
| G01/12/29  | 27 March 1860 – 25 September 1860   |
| G01/12/30  | 2 October 1860 – 24 September 1861 - CLOSED due to fragile physical condition |
| G01/12/31  | 1 October 1861 – 25 March 1862  |
| G01/12/32  | 1 April 1862 – 23 September 1862  |



|           |   |
|-----------|---|
| G01/12/33 | 30 September 1862 – 24 March 1863                   |
| G01/12/34 | 31 March 1863 – 22 September 1863                   |
| G01/12/35 | 29 September 1863 – 22 March 1864                   |
| G01/12/36 | 29 March 1864 – 17 September 1864                   |
| G01/12/37 | Missing   |
| G01/12/38 | 28 March 1865 – 19 September 1865                   |
| G01/12/39 | 26 September 1865 – 20 March 1866                   |
| G01/12/40 | 27 March 1866 – 18 September 1866                   |
| G01/12/41 | 25 September 1866 – 19 March 1867                   |
| G01/12/42 | 26 March 1867 – 17 September 1867 - Condition: Fair |
| G01/12/43 | 21 September 1867 – 14 March 1868                   |
| G01/12/44 | 21 March 1868 – 12 September 1868                   |
| G01/12/45 | 19 September 1868 – 13 March 1869                   |
| G01/12/46 | 28 March 1869 – 11 September 1869                   |
| G01/12/47 | 18 September 1869 – 26 February 1870 (with gaps)    |
| G01/12/48 | 19 March 1870 – 10 September 1870                   |
| G01/12/49 | 17 SEPTEMBER 1870 – 11 MARCH 1871                   |
| G01/12/50 | 8 MARCH 1871 – 9 SEPTEMBER 1871                     |
| G01/12/51 | 11 November 1871 – 9 March 1872                     |
| G01/12/52 | 16 March 1872 – 7 September 1872                    |
| G01/12/53 | 14 SEPTEMBER 1872 – 8 MARCH 1873                    |
| G01/12/54 | 15 March 1873 – 26 July 1873                        |
| G01/12/56 | 14 March 1874 – 19 September 1874                   |
| G01/12/57 | 26 September 1874 – 3 April 1875                    |
| G01/12/58 | 10 April 1875 – 11 October 1875                     |
| G01/12/59 | 23 October 1875 – 6 May 1876                        |
| G01/12/60 | Missing   |
| G01/12/61 | 26 November 1876 – 2 June 1877                      |
| G01/12/62 | 2 June 1877 – 29 December 1877                      |
| G01/12/63 | 5 January 1878 – 13 July 1878                       |
| G01/12/64 | 20 July 1878 – 8 February 1879                      |
| G01/12/65 | 15 February 1879 – 6 September 1879                 |



|           |   |
|-----------|---|
| G01/12/66 | 13 September 1879 – 20 March 1880   |
| G01/12/67 | 27 March 1880 – 2 October 1880  |
| G01/12/68 | 9 October 1880 – 9 April 1881   |
| G01/12/69 | 16 April 1881 – 22 October 1881   |
| G01/12/70 | 29 October 1881 – 6 May 1882  |
| G01/12/71 | 13 May 1882 – 18 November 1882 - CLOSED due to fragile physical condition                                     |
| G01/12/72 | 25 November 1882 – 2 June 1883  |
| G01/12/73 | 9 June 1883 – 8 December 1883   |
| G01/12/74 | 15 December 1883 – 14 June 1884   |
| G01/12/75 | 21 June 1884 – 20 December 1884 - CLOSED – due to fragile condition   |
| G01/12/76 | 2 January 1885 – 4 July 1885  |
| G01/12/77 | 11 July 1885 – 2 January 1886   |
| G01/12/78 | 17 July 1886 – 22 January 1887  |
| G01/12/79 | 5 February 1887 – 6 August 1887   |
| G01/12/80 | 13 AUGUST 1887 – 3 MARCH 1888   |
| G01/12/81 | 22 September 1888 – 5 October 1889  |
| G01/12/82 | 19 October 1889 – 31 October 1891   |
| G01/12/83 | 14 November 1891 – 9 December 1893  |
| G01/12/84 | 6 January 1894 – 18 January 1896  |
| G01/12/85 | 1 February 1896 – 26 February 1898  |
| G01/12/86 | 12 March 1898 – 29 July 1889 -<br>Incorporates minutes of Gort Rural District Council 15 April – 29 July 1899 |
| G01/12/87 | 2 September 1899 – 15 June 1901   |
| G01/12/88 | 24 August 1901 – 22 August 1903   |
| G01/12/89 | Missing   |
| G01/12/90 | 28 October 1905 – 9 November 1907   |
| G01/12/91 | 23 November 1907 - 7 November 1908  |
| G01/12/92 | 21 November 1908 – 23 October 1909  |
| G01/12/93 | 6 November 1909 – 8 October 1910 - CLOSED due to its Poor Condition   |
| G01/12/94 | 22 October 1910 – 23 September 1911   |
| G01/12/95 | 7 October 1911 - 21 September 1912  |
| G01/12/96 | 5 October 1912 – 6 September 1913   |
| G01/12/97 | 6 September 1913 - 25 July 1914   |



G01/12/

GORT POOR LAW UNION – SUMMARY LIST

---

|                  |                               |
|------------------|-------------------------------|
| G01/12/98        | 8 August 1914 – 24 July 1915  |
| G01/12/99        | 7 August 1915 – 14 April 1917 |
| G01/12/100       | 12 May 1917 – 12 April 1919   |
| G01/12/101       | 10 May 1919 – 14 May 1921     |
| G01/12/102 – 103 | Missing                       |

**Indoor Relief Register**

G01/12/104      24 August 1914 - 11 August 1920 - Restricted Access

**Indoor Relief List**

G01/12/105      March 1917 - 30 September 1919 - FRAGILE – IN POOR CONDITION

**Incoming Letter Book**

G01/12/106      11 March 1912 - 25 March 1916 - RESTRICTED ACCESS IN POOR  
CONDITION – [OIL] STAINED

**Provision Receipt and Consumption Account and Provisions Check Account**

G01/12/107      29 September 1917 - 30 November 1919



**Board of Guardian Rough Minutes**

|            |  |
|------------|--|
| G01/12/108 | 14 June 1844 – 18 July 1845                                    |
| G01/12/109 | 25 July 1845 – 17 April 1846                                   |
| G01/12/110 | 24 April 1846 – 19 March 1847                                  |
| G01/12/111 | Missing  |
| G01/12/112 | 18 February 1848 – 1 December 1848                             |
| G01/12/113 | 8 December 1848 – 21 September 1849                            |
| G01/12/114 | 17 October 1849 – 30 July 1850                                 |
| G01/12/115 | 6 August 1850 – 24 March 1851                                  |
| G01/12/116 | 31 March 1851 – 20 October 1851                                |
| G01/12/117 | 25 October 1851 – 18 May 1852                                  |
| G01/12/118 | 25 May 1852 - 29 November 1852                                 |
| G01/12/119 | 6 December 1852 - 9 May 1853                                   |
| G01/12/120 | 16 May 1853 – 24 October 1853                                  |
| G01/12/121 | 31 October 1853 – 10 April 1854                                |
| G01/12/122 | 17 April 1854 – 9 October 1854                                 |
| G01/12/123 | 16 October 1854 – 9 April 1855                                 |
| G01/12/124 | 16 April 1855 – 11 October 1855                                |
| G01/12/125 | 25 October 1855 – 27 March 1856                                |
| G01/12/126 | Missing  |
| G01/12/127 | 16 October 1856 – 12 March 1857                                |
| G01/12/128 | 7 April 1857 – 30 April 1857                                   |
| G01/12/129 | Missing  |
| G01/12/130 | 8 October 1857 – 20 March 1858                                 |
| G01/12/131 | 6 April 1858 – 28 September 1858 - fragile – in poor condition |
| G01/12/132 | 2 October 1858 – 29 March 1859                                 |
| G01/12/133 | 13 April 1859 – 17 September 1859                              |
| G01/12/134 | 27 September 1859 – 22 November 1859                           |



---

# **GORT POOR LAW UNION ARCHIVE COLLECTION**

## **G01/12/**

© Galway County Council

All Rights Reserved.

No part of this film may be reproduced or transmitted  
in any form without the permission of  
Galway County Council

Microfilm first produced 2008



---

**GORT POOR LAW UNION  
BOARD OF GUARDIAN MINUTES**

**G01/12/93**

**6 November 1909 – 8 October 1910**

CLOSED due to its Poor Condition



**GORT POOR LAW UNION  
BOARD OF GUARDIAN MINUTES**

**G01/12/93**

**6 November 1909 – 8 October 1910**

Conserved, with aid of a Heritage Council grant in 2010



G0112193

Galway County Council Archives

G O R T

Population in 1901--14,201.

Pr

ne,

STATE of the Workhouse for the Week ending Saturday

ay of October

| Number of Inmates for which accommodation is provided | No. that can be accommodated in each building | Total No. in each building on the above date | Able-bodied |      | Aged and Infirm Persons, and Adult Persons, above 15 years of age, but not working |      | Boys and Girls above 9 and under 15 years of age |       | Children above 5 and under 9 years of age | Children above 2 and under 5 years of age | Infants under 2 years of age | Casuals |         |          | RETURN SICK AND LUNATIC |   |
|---|---|--|-------------|------|--|------|--|-------|---|---|------------------------------|---------|---------|----------|-------------------------|---|
|   |   |  | Males       | Fem. | Males  | Fem. | Boys   | Girls |   |   |                              | Males   | Females | Children | TOTAL                   | Number in Hospital on the above date        |
| Workhouse .. .. .                                     | 729   | 133  |             |      |  |      |  |       |   |   |                              |         |         |          |                         |   |
| Temporary Buildings ..                                | —   |  |             |      |  |      |  |       |   |   |                              |         |         |          |                         |   |
| Additional Workhouse ..                               | —   |  |             |      |  |      |  |       |   |   |                              |         |         |          |                         |   |
| Permanent Fever Hospital                              | 51  | 1  |             |      |  |      |  |       |   |   |                              |         |         |          |                         |   |
| Fever Sheds .. .. .                                   | —   |  |             |      |  |      |  |       |   |   |                              |         |         |          |                         |   |
| TOTAL .. .. .   | 780   | 134  |             |      |  |      |  |       |   |   |                              |         |         |          |                         |   |
| Remaining on previous Saturday, as per last Return    |   |  | 11          | 16   | 34   | 37   | 3  | 3     | 12  | 7   | 9                            | 2       | .       | .        | 134                     |   |
| Admitted during the Week                              |   |  | 1           | 2    | 1  | .    | .  | .     | .   | 1   | .                            | 18      | 1       | 1        | 25                      |   |
| Born .. .. .  |   |  | .           | .    | .  | .    | .  | .     | .   | .   | .                            | .       | .       | .        | .                       |   |
| TOTAL,  |   |  | 12          | 18   | 35   | 37   | 3  | 3     | 12  | 8   | 9                            | 20      | 1       | 1        | 159                     |   |
| Discharged during the Week                            |   |  | 2           | 4    | 1  | .    | .  | .     | 1   | 1   | .                            | 14      | 1       | 1        | 25                      |   |
| Died .. .. .  |   |  | .           | .    | .  | .    | .  | .     | .   | .   | .                            | .       | .       | .        | .                       |   |
| Total Discharged and Died                             |   |  | 2           | 4    | 1  | .    | .  | .     | 1   | 1   | .                            | 14      | 1       | 1        | 25                      |   |
| REMAINING ON THE ABOVE DATE                           |   |  | 10          | 14   | 34   | 37   | 3  | 3     | 11  | 7   | 9                            | 6       | .       | .        | 134                     | No. at corresponding period last year, 142. |

RETURN of DESTITUTE PERSONS relieved out of the Workhouse, as by Relief Lists, for the last Week ended Saturday, the 30th day of October 1909 authenticated and laid before the Board of Guardians at this Meeting.

| Relief Districts | Destitute Persons relieved out of the Workhouse (under 10 Vic., c. 31, s. 1) |   | Destitute Persons relieved out of the Workhouse (but not comprised in sec. 1) |   | Total relieved out of the Workhouse |         | Relief Districts | Destitute Persons relieved out of the Workhouse (under 10 Vic., c. 31, s. 1) |   | Destitute Persons relieved out of the Workhouse (but not comprised in sec. 1) |   | Total relieved out of the Workhouse |         |
|------------------|--|---|---|---|-------------------------------------|---------|------------------|--|---|---|---|-------------------------------------|---------|
|                  | Number of Cases relieved   | Number of Persons, including Applicant and Family dependent on him or her | Number of Cases relieved  | Number of Persons, including Applicant and Family dependent on him or her | Cases                               | Persons |                  | Number of Cases relieved   | Number of Persons, including Applicant and Family dependent on him or her | Number of Cases relieved  | Number of Persons, including Applicant and Family dependent on him or her | Cases                               | Persons |
| No. I.           | 106  | 120   | .   | .   | 106                                 | 120     | Bt. forward      |  |   |   |   |                                     |         |
| No. II.          |  |   |   |   |                                     |         | No. VI.          |  |   |   |   |                                     |         |
| No. III.         |  |   |   |   |                                     |         | No. VII.         |  |   |   |   |                                     |         |
| No. IV.          |  |   |   |   |                                     |         | No. VIII.        |  |   |   |   |                                     |         |
| No. V.           |  |   |   |   |                                     |         | No. IX.          |  |   |   |   |                                     |         |
| Car. forwd.      |  |   |   |   |                                     |         | No. X.           |  |   |   |   |                                     |         |
| TOTAL ..         | 106  | 120   | .   | .   | 106                                 | 120     | TOTAL ..         | 106  | 120   | .   | .   | 106                                 |         |

COPY OF MINUTES of Proceedings of the Board of Guardians, at a Meeting held on SA the 6th day of November 1909.

PRESENT: In the Chair,—Mr. Patrick Lambert

Other Guardians:—Messrs.

- |                          |                     |                  |                       |
|--------------------------|---------------------|------------------|-----------------------|
| J. W. BRADY-MURRAY, J.P. | MICHAEL FEENEY      | THOMAS LALEY     | JOHN O'DEA            |
| MARTIN J. BURKE          | RICHARD P. FLAHERTY | PATRICK LAMBERT  | LAURENCE O'DONNELL    |
| JOHN CAHILL              | FERGUS GILL         | PATRICK LEWIS    | MICHAEL O'DONNELL     |
| JOHN CALLANAN            | PATRICK J. HAYES    | MICHAEL LINNANE  | MARTIN O'DONNELL      |
| WILLIAM CARR             | JAMES HEADD         | PATRICK LINNANE  | MCHL. O'DONOHUE, J.P. |
| MARTIN COEN              | COLMANN HIGGINS     | MICHAEL NAUGHTON | THOMAS O'NEIL         |
| JOHN CONNOLLY            | JAMES JOYCE         | JOHN NEWELL      | PATRICK O'SHAUGHNESSY |
| THOMAS P. COBLESS        | JOHN KEANE          | PATRICK NELLY    | JOHN QUINN            |
| JAMES CUNNINGHAM         | MORTIMER KEELY      | PATRICK F. NILAN | PATRICK RYAN          |
| EDWARD FAHY              | BARTHOLOMEW KEELY   | JAMES NOONE      | OWEN SWEENEY          |
|                          |                     |                  | MICHAEL TANNIAN       |

The Minutes of the last Meeting were read and signed

Summary and Reconciliation of Treasurer's Account

ing the

|   | Ordinary Account |    |    | Loans Account |    |    |
|---|------------------|----|----|---------------|----|----|
|   | £                | s. | d. | £             | s. | d. |
| <b>SUMMARY.</b>   |                  |    |    |               |    |    |
| Balance (if any) due by Treasurer as per last monthly statement ... ..    |                  |    |    |               |    |    |
| Total sums received during the month ... ..                               |                  |    |    |               |    |    |
| Total ... ..  |                  |    |    |               |    |    |
| Balance (if any) due to Treasurer as per last monthly statement ... ..    |                  |    |    |               |    |    |
| Payments ordered during the month ... ..                                  |                  |    |    |               |    |    |
| Total ... ..  |                  |    |    |               |    |    |
| Net Balance due _____ the Union (being difference of above Totals) ... .. |                  |    |    |               |    |    |
| <b>RECONCILEMENT.</b>   |                  |    |    |               |    |    |
| Balance per Bank Book due _____ Treasurer ... ..                          |                  |    |    |               |    |    |
| Outstanding Orders ... ..   |                  |    |    |               |    |    |
| Net Balance as above due _____ the Union ... ..                           |                  |    |    |               |    |    |

Dated this \_\_\_\_\_ day of \_\_\_\_\_ 19\_\_\_\_\_

\_\_\_\_\_  
Clerk of the Union.

Galway County Council Archives



The Abstract of the Accounts of the several Relieving Officers the last Week  
 the 6<sup>th</sup> day of November 1909; was submitted as follows:—

|  | Relieving Officer GORMALLY |    |    | Relieving Officer LEECH |    |    | Relieving Officer |    |    | Relieving Officer |    |    | Relieving Officer |    |    | Relieving Officer |    |    | Total |    |   |
|--|----------------------------|----|----|-------------------------|----|----|-------------------|----|----|-------------------|----|----|-------------------|----|----|-------------------|----|----|-------|----|---|
|  | District No. I.            |    |    | District No. II.        |    |    | District No. III. |    |    | District No. IV.  |    |    | District No. V.   |    |    | District No. VI.  |    |    |       |    |   |
|  | £                          | s. | d. | £                       | s. | d. | £                 | s. | d. | £                 | s. | d. | £                 | s. | d. | £                 | s. | d. | £     |    |   |
| 1. Balance in hand at close of previous week ...   | 9                          | 2  | 1  | 2                       | 9  | 6  |                   |    |    |                   |    |    |                   |    |    |                   |    |    | 30    | 11 | 7 |
| 2. Money since advanced by Guardians ...   | .                          | .  | .  | .                       | .  | .  |                   |    |    |                   |    |    |                   |    |    |                   |    |    |       |    |   |
| 3. Total to be accounted for ...   | 9                          | 2  | 1  | 2                       | 9  | 6  |                   |    |    |                   |    |    |                   |    |    |                   |    |    | 30    | 11 | 7 |
| EXPENDITURE.   |                            |    |    |                         |    |    |                   |    |    |                   |    |    |                   |    |    |                   |    |    |       |    |   |
| 4. Out-door Relief ordered by the Board—   |                            |    |    |                         |    |    |                   |    |    |                   |    |    |                   |    |    |                   |    |    |       |    |   |
| In Money ..  | 6                          | 16 | 6  | 3                       | 16 |    |                   |    |    |                   |    |    |                   |    |    |                   |    |    | 10    | 12 | 6 |
| In Kind ...  | .                          | .  | .  | .                       | .  | .  |                   |    |    |                   |    |    |                   |    |    |                   |    |    |       |    |   |
| 5. Provisional Relief (in kind only), given by Relieving Officer on his own Responsibility |                            |    |    | 5                       | 4  |    |                   |    |    |                   |    |    |                   |    |    |                   |    |    |       |    |   |
| 6. Orphans and Deserted Children boarded out ...   | .                          | 9  | .  | .                       | 8  | 9  |                   |    |    |                   |    |    |                   |    |    |                   |    |    |       |    |   |
| 7. Total Relief given  | 7                          | 10 | 10 | 4                       | 4  | 9  |                   |    |    |                   |    |    |                   |    |    |                   |    |    | 11    | 1  |   |
| 8. Balance in hands at close of the week ...   | 1                          | 11 | 3  | 17                      | 4  | 9  |                   |    |    |                   |    |    |                   |    |    |                   |    |    | 18    | 16 |   |
| 9. TOTAL ...   | 9                          | 2  | 1  | 2                       | 9  | 6  |                   |    |    |                   |    |    |                   |    |    |                   |    |    | 30    | 11 | 7 |

NOTE.—Should any of the above-mentioned books not be duly authenticated and submitted at the meeting, the names thereof should be struck out in red ink, and the cause of the omission explained on the Minutes.

Dated this 6<sup>th</sup> day of November 1909.

John Gormally  
 acting Clerk of Union.

The Clerk's Report on the execution of Orders p  
to the following effect :-

The Master's Estimate of Provisions and Necessaries required for the ensuing week was  
examined, and Orders were duly made for the several articles specified, namely :-

|     |      |          |
|-----|------|----------|
| 941 | lbs  | W. Bread |
| 30  | "    | "        |
| 54  | "    | Beef     |
| 40  | "    | Mutton   |
| 75  | gals | Milk     |
| 2   | cut  | Sugar    |
| 480 |      | Eggs     |
| 3   | doz  | Porter   |
| 59  | lbs  | Butter   |
| 224 | "    | Bacon    |
| 3   | "    | Tobacco  |

Galway County Council Archives

The Reports of the Master and other Officers were r

the

Galway County Council Archives

The following Orders of the Local Government Board for Ireland were laid before the Board,  
and directions given thereon, as follows:—



The following Letters from the Local Government and others were read  
Clerk, and Orders were made on them respectively, as follows

Submitted notification of transfer from County Fund of £569, on acc of third instalment of Guardians demand to 31<sup>st</sup> March 1910.

Read letter from Local Govt. Board dated 15<sup>th</sup> ulto, requesting to be informed why an artificial leg at a cost of £4, as already sanctioned by the Guardians, is not efficient and suitable in the case of the patient in the Workhouse Infirmary named Moran.

Ordered —

The Medical Officer states that the leg. c £8 is not suitable. The Guardians decided to buy a leg c £10. 10. 0 recommended by the medical officer, Moran contributing £4. of the cost, and the Guardians the remainder.

The Stockholder submitted his enumeration, and value of the stock of clothing, Bedding, Provisions, & arms on the 30<sup>th</sup> September last, and recommended the following worn out articles of clothing be cancelled

23 Pillow slips, 10 Blankets, 9 sheets, 17 Rugs, 10 Straw Br  
2 Feather Pillows, 7 Rollers, 9 Men's jackets, 4 Waistcoats  
11 Trousers, 30 Shirts, 4 shoes, 7 caps, 14 women's under  
Petticoats 26 upper Petticoats, 8 chemises, 20 aprons  
4 neckerchiefs, 9 shoes, 14 1/2 stockings, 21 shawls.  
2 Boys jackets, 1 Waistcoat, 3 Trousers, 6 shoes.  
3 Socks, 10 girls Frocks, 15 Petticoats, 6 Bibs  
7 shoes, and 4 Stockings.

~~Submitted notification of transfer from County~~

The Master was directed to use his own discretion regarding the taking and piling of manure during frosty weather.

The Master reported that the Matron is absent since 3<sup>rd</sup> inst, assisted by the Wardsmistress he is doing her duty.

"Approved."

The following articles of clothing (Workhouse) were burned ~~on~~ on the occasion of clothes belonging to Rose Doherty a patient on the Fever Hospital. were also burned: — 2 mattresses, 2 pair Blankets, 2 Shirts, 2 Feather Pillows, 1 Straw Pillow 3 Pillow Slips, and 1 White Quilt.

Ordered

Deduct those articles from stock

Consideration of a claim amounting to £4.10 for clothing destroyed was adjourned to next meeting, the Fever Nurse to give further particulars in the meantime.

Relieving officer Gormally was granted a few days leave of absence. His wife to discharge his duties.



**Gort Union.****BOARDED OUT CHILDREN, &c.**

MINUTES of Proceedings of the Board of Guardians of Gort Union, at their Meeting on  
 SATURDAY, the 6<sup>th</sup> day of November 1909.

Read letter from Local Govt. Board dated 20<sup>th</sup> ulto, requesting to be informed whether the Guardians ordered clothes to be provided for the boys Joseph Piker and Martin Smith, boarded out.

Ordered —

Smith received an outfit when leaving, and Piker's clothing had been provided by foster parent.

Letter from Local Govt. Board dated 4<sup>th</sup> inst, requesting to be furnished with particulars on Form A, respecting the proposal to board out John Walsh with Michael Brennan; also inquiring why no payment is to be made in this case except for clothing.

Ordered —

Form A has been forwarded to Local Govt. Board.

The following motion was handed in: —

"I will move on this day fortnight that Michael Brennan attend remuneration for boarding out John Walsh, and the order made on the 23<sup>rd</sup> October, be rescinded."

Signed Patrick Nelly.

Ordered — That a boy named John Connors, aged 8 years, be boarded out with man named Patt Diviny Druminalough, £ 4 per annum, clothing to be provided by the Guardians.

clothing not to exceed 10/- was allowed for a child boarded out with Mrs Smith, Crag Kinvara.

(Signed)

John J. Formally  
 Acting Clerk of the Union.

[This to be entered on the occasion of every appointment of a new Committee, after the triennial Election of Guardians and on the occasion of any election to fill any vacancies in a Dispensary Committee.]

The following persons were appointed as Wardens for the Elector  
 Dispensary District:—The Clerk to make a Return accordingly to the Local G  
 for Ireland of the names and addresses of the Guardians, Relieving Officers a  
 authorized to issue Medical Relief Tickets in each Dispensary District, and to issue the prescrib  
 Notification to the Wardens appointed, and to the Medical Officers of the respective Dispensary  
 Districts, in pursuance of Articles 1, 2 and 3 of the General Regulations for Dispensary Districts.—  
 The Clerk was also directed to supply Check Books of Medical Relief Tickets (Forms E 1, E 2  
 and E 3), in pursuance of Article 31 of the Dispensary Regulations, to each Guardian of the  
 Union, and to each Relieving Officer and Warden therein, namely:—

| Name of Dispensary District   | Electoral Divisions | Names and Addresses of Wardens appointed for each Electoral Division |
|---|---------------------|--|
| <p style="font-size: 2em; opacity: 0.3; transform: rotate(-30deg); position: absolute; top: 50%; left: 50%; pointer-events: none;">Galway County Council Archives</p> |                     |  |

[This at the end of each half-year, in pursuance of Article 33 of the General Rules for Dispensary Districts, dated 24th February, 1899.]

An Account of the Expenses incurred for the service of each Dispensary District in the  
 Union, for the half-year ended \_\_\_\_\_ 19 \_\_\_\_\_ having been  
 submitted to the Board, the Clerk was directed to furnish the Medical Officer of each Dis-  
 pensary District with a Statement of all the Expenses of the District which have been  
 included in the half-year's Accounts. The following are the Total Expenses incurred for  
 each Dispensary District for the half-year ended \_\_\_\_\_ 19 \_\_\_\_\_

|                   |       |         |
|-------------------|-------|---------|
| Ardrahan District | - - - | £ _____ |
| Gort District     | - - - | £ _____ |
| Kinvara District  | - - - | £ _____ |

Read letter from local Govt. Board  
3rd inst. approving of the arrangements made  
the discharge of the duties of the medical officer  
of Govt Dispensary District, and Workhouses,  
during his absence on leave.

From local Govt. Board dated 4th inst,  
requesting the Guardians to take steps to  
enforce strict compliance with the Vaccination  
Acts in the Union.

Ordered — notices have been already served on the  
defaulters, and most of them are vaccinated.

One ton of coal @ 22/6 was ordered for use  
in Kinvara Dispensary.

R. O. Leach reported that Dr. Connelly, Kinvara  
was summoned as a brown witness to  
Ballinasloe Quarter Sessions, and he requisitioned  
Dr. Foley to do duty during his absence.

Ordered — Approved — usual fee allowed.

2/10/0

Galway County Council Archives



Galway County Council Archives

[These Reports are to be made up and forwarded by the Medical Officers to the Board of Guardians quarterly, viz., on the 31st March, 30th June, 30th September, and 31st December.]

Reports (Form P) containing the names of Children born in the District who are over three months of age and have not been vaccinated, from the Medical Officers of the following Dispensary Districts, viz. :-

\_\_\_\_\_  
\_\_\_\_\_  
\_\_\_\_\_  
\_\_\_\_\_

were laid before the Board and directions given thereon, as follows :-

Next Meeting of the Guardians to be held on SATURDAY, the 20th day of November 1909.

(Signed), John J. Gormally  
Acting Clerk of the Union.

\_\_\_\_\_  
Chairman.



GORT UNION.

Population in 1901--14,201.

Present Net Annual Value.

STATE of the Workhouse for the Week ending Saturday, the 13<sup>th</sup> day of Nov. 1909

| Number of Inmates for which accommodation is provided | No. that can be accommodated in each building | Total No. in each building on the above date | Able-bodied |      | Aged and Infirm Persons, and Adult Persons, above 15 years of age, but not working |      | Boys and Girls above 9 and under 15 years of age |       | Children above 5 and under 9 years of age | Children above 2 and under 5 years of age | Infants under 2 years of age | Casuals |         |          | TOTAL                                      | RETURN OF SICK AND LUNATICS          |   |
|---|---|--|-------------|------|--|------|--|-------|---|---|------------------------------|---------|---------|----------|--|--------------------------------------|---|
|   |   |  | Males       | Fem. | Males  | Fem. | Boys   | Girls |   |   |                              | Males   | Females | Children |  | Number in Hospital on the above date | No. of Lunatics and Idiots in Workhouse on the above date |
| Workhouse .. .. .                                     | 729   | 134  |             |      |  |      |  |       |   |   |                              |         |         |          |  |                                      |   |
| Temporary Buildings ..                                | —   |  |             |      |  |      |  |       |   |   |                              |         |         |          |  |                                      |   |
| Additional Workhouse ..                               | —   |  |             |      |  |      |  |       |   |   |                              |         |         |          |  |                                      |   |
| Permanent Fever Hospital                              | 51  |  |             |      |  |      |  |       |   |   |                              |         |         |          |  |                                      |   |
| Fever Sheds .. .. .                                   | —   |  |             |      |  |      |  |       |   |   |                              |         |         |          |  |                                      |   |
| TOTAL .. .. .   | 780   | 134  |             |      |  |      |  |       |   |   |                              |         |         |          |  |                                      |   |
| Remaining on previous Saturday, as per last Return    |   |  | 11          | 14   | 36   | 37   | 3  | 3     | 11  | 7   | 9                            | 5       |         |          | 136  |                                      |   |
| Admitted during the Week                              |   |  | 3           | 2    | 2  | 1    |  | 1     |   |   |                              | 22      | 2       |          | 33   |                                      |   |
| Born .. .. .  |   |  |             |      |  |      |  |       |   |   |                              |         |         |          |  |                                      |   |
| TOTAL,  |   |  | 14          | 16   | 38   | 38   | 3  | 4     | 11  | 7   | 9                            | 27      | 2       |          | 169  |                                      |   |
| Discharged during the Week                            |   |  | 3           |      | 2  | 1    |  |       |   |   |                              | 27      | 2       |          | 35   |                                      |   |
| Died .. .. .  |   |  |             |      |  |      |  |       |   |   |                              |         |         |          |  |                                      |   |
| Total Discharged and Died                             |   |  | 3           |      | 2  | 1    |  |       |   |   |                              | 27      | 2       |          | 35   |                                      |   |
| REMAINING ON THE ABOVE DATE                           |   |  | 11          | 16   | 36   | 37   | 3  | 4     | 11  | 7   | 9                            |         |         |          | 134  |                                      |   |
|   |   |  |             |      |  |      |  |       |   |   |                              |         |         |          | No. at corresponding period last year, 148 |                                      |   |

RETURN of DESTITUTE PERSONS relieved out of the Workhouse, as by Relief Lists, for the last Week ended Saturday, the 13<sup>th</sup> day of November 1909 authenticated and laid before the Board of Guardians at this Meeting.

| Relief Districts | Destitute Persons relieved out of the Workhouse (under 10 Vic., c. 31, s. 1) |   | Destitute Persons relieved out of the Workhouse (but not comprised in sec. 1) |   | Total relieved out of the Workhouse |         | Relief Districts | Destitute Persons relieved out of the Workhouse (under 10 Vic., c. 31, s. 1) |   | Destitute Persons relieved out of the Workhouse (but not comprised in sec. 1) |   | Total relieved out of the Workhouse |         |
|------------------|--|---|---|---|-------------------------------------|---------|------------------|--|---|---|---|-------------------------------------|---------|
|                  | Number of Cases relieved   | Number of Persons, including Applicant and Family dependent on him or her | Number of Cases relieved  | Number of Persons, including Applicant and Family dependent on him or her | Cases                               | Persons |                  | Number of Cases relieved   | Number of Persons, including Applicant and Family dependent on him or her | Number of Cases relieved  | Number of Persons, including Applicant and Family dependent on him or her | Cases                               | Persons |
| No. I.           | 115  | 119   |   |   | 115                                 | 119     | Bt. forward      |  |   |   |   |                                     |         |
| No. II.          |  |   |   |   |                                     |         | No. VI.          |  |   |   |   |                                     |         |
| No. III.         |  |   |   |   |                                     |         | No. VII.         |  |   |   |   |                                     |         |
| No. IV.          |  |   |   |   |                                     |         | No. VIII.        |  |   |   |   |                                     |         |
| No. V.           |  |   |   |   |                                     |         | No. IX.          |  |   |   |   |                                     |         |
|                  |  |   |   |   |                                     |         | No. X.           |  |   |   |   |                                     |         |
| Car. forwd.      |  |   |   |   |                                     |         | TOTAL ..         | 115  | 119   |   |   | 115                                 | 119     |

COPY OF MINUTES of Proceedings of the Board of Guardians, at a Meeting held on SATURDAY

the 20<sup>th</sup> day of November 1909

PRESENT: In the Chair,—Mr. Patrick Lambert

Other Guardians:—Messrs.

- |                          |                     |                  |                       |
|--------------------------|---------------------|------------------|-----------------------|
| J. W. BRADY-MURRAY, J.P. | MICHAEL FEENEY      | THOMAS LALLY     | JOHN O'DEA            |
| MARTIN J. BURKE          | RICHARD P. FLAHERTY | PATRICK LAMBERT  | LAURENCE O'DONNELL    |
| JOHN CAHILL              | FERGUS GILL         | PATRICK LEWIS    | MICHAEL O'DONNELL     |
| JOHN CALLANAN            | PATRICK J. HAYES    | MICHAEL LINNANE  | MARTIN O'DONNELL      |
| WILLIAM CARR             | JAMES HEADB         | PATRICK LINNANE  | MCHL. O'DONOHUE, J.P. |
| MARTIN COEN              | COLMANN HIGGINS     | MICHAEL NAUGHTON | THOMAS O'NEILL        |
| JOHN CONNOLLY            | JAMES JOYCE         | JOHN NEWELL      | PATRICK O'SHAUGHNESSY |
| THOMAS P. CORLESS        | JOHN KEANE          | PATRICK NELLY    | JOHN QUINN            |
| JAMES CUNNINGHAM         | MORTIMER KEELY      | PATRICK F. NILAN | PATRICK RYAN          |
| EDWARD FAHY              | BARTHOLOMEW KEELY   | JAMES NOONE      | OWEN SWEENEY          |
|                          |                     |                  | MICHAEL TANNIAN       |

The Minutes of the last Meeting were read and signed

17

Summary and Reconcilement of Treasurer's Account for the month ending

19

|   | Ordinary Account |    |    | Loans Account |    |    |
|---|------------------|----|----|---------------|----|----|
|   | £                | s. | d. | £             | s. | d. |
| <b>SUMMARY.</b>   |                  |    |    |               |    |    |
| Balance (if any) due by Treasurer as per last monthly statement ... ..    |                  |    |    |               |    |    |
| Total sums received during the month ... ..                               |                  |    |    |               |    |    |
| Total ... ..  |                  |    |    |               |    |    |
| Balance (if any) due to Treasurer as per last monthly statement ... ..    |                  |    |    |               |    |    |
| Payments ordered during the month ... ..                                  |                  |    |    |               |    |    |
| Total ... ..  |                  |    |    |               |    |    |
| Net Balance due _____ the Union (being difference of above Totals) ... .. |                  |    |    |               |    |    |
| <b>RECONCILEMENT.</b>   |                  |    |    |               |    |    |
| Balance per Bank Book due _____ Treasurer ... ..                          |                  |    |    |               |    |    |
| Outstanding Orders ... ..   |                  |    |    |               |    |    |
| Net Balance as above due _____ the Union ... ..                           |                  |    |    |               |    |    |

Dated this 26 day of Nov. 1909

*Mylop Bunk*  
Clerk of the Union.

Galway County Council Archives



[FORM 14]  
(Article 7)

### TABLE (2) STATISTICAL MINUTES

(To be kept by the Clerk, who is to forward a copy to the Local Government Board along with, but separate from, the General Minutes of each Meeting.)

#### Gort Union.

Meeting held the 20th day of November 1909.

The following Relief Registers were produced, examined, and authenticated by the signature of the Chairman and counter-signature of the Clerk.

Indoor from No. 1650 to No. 1710  
Separate „ No. \_\_\_\_\_ to No. \_\_\_\_\_  
Outdoor „ No. \_\_\_\_\_ to No. \_\_\_\_\_

The Ledger was produced by the Clerk, posted up to date, with the proper Debits and Credits.

The following Books were submitted by the Clerk, he having first ascertained the accuracy of the entries made therein by the Master of the Workhouse, and authenticated the same by his signature:—

1. The Indoor Relief List.
2. The Provision Check Account.
3. The Provision Receipt and Consumption Account.

The Weekly Abstract of the Account of Provisions and Necessaries for the Week ending Saturday, the 13th day of November 1909, was submitted, of which the following is a Summary:—

|             | Stock in hand at close of preceding week |    |    | Received during the week |    |    | Total |    |    | Consumed during the week |             |       | Stock in hand at close of this week |    |    | Collective No. of Days |    |   |     |
|-------------|--|----|----|--------------------------|----|----|-------|----|----|--------------------------|-------------|-------|-------------------------------------|----|----|------------------------|----|---|-----|
|             | £  | s. | d. | £                        | s. | d. | £     | s. | d. | By Inmates               | By Officers | Total | £                                   | s. | d. |                        |    |   |     |
| Provisions  | 56                                       | 59 |    | 22                       | 4  | 2  | 78    | 9  | 11 |                          |             |       | 27                                  | 2  | 7  | 51                     | 7  | 4 | 967 |
| Necessaries | 93                                       | 16 | 11 | .                        | .  | .  | 93    | 16 | 11 |                          |             |       | 5                                   | .  | 6  | 88                     | 16 | 5 |     |
| Total       | 150                                      | 3  | 8  | 22                       | 4  | 2  | 172   | 6  | 10 |                          |             |       | 32                                  | 3  | 1  | 140                    | 3  | 9 |     |

The General Average Cost of an Inmate for the week was ... .. £ : s. d. 3 : 9 1/4  
Average Cost in Infirmary ... .. £ : s. d. 4 : =  
Average Cost in Fever Hospital ... .. £ : s. d. 12 : =

The following Books were also produced by the Clerk, their accuracy having been previously ascertained by him and authenticated by his signature—

1. The Clothing Materials Receipt and Conversion Book.
2. The Clothing Receipt Book.
3. The Inventory Book.
4. The Labour Book.
5. The Workhouse Farm Account.
6. The Medical Weekly Return and Extra Book.
7. The Outdoor Admission and Discharge Book.
8. The Indoor Admission and Discharge Book.

The Out-door Relief Lists, Application and Report Books, Order Check Books for Out-door Relief in kind, and Receipts and Expenditure Books of the several Relieving Officers were then produced by the Clerk, their accuracy having been previously ascertained by him and authenticated by his signature.

The Abstract of the Accounts of the several Relieving Officers for the last Satur  
 the 20th day of November 1909, was submitted as follows:—

|  | Relieving Officer GORMALLY |    |    | Relieving Officer LEECH |    |    | Relieving Officer |    |    | Relieving Officer |    |    | Relieving Officer |    |    | Relieving Officer |    |    | TOTAL |    |    |
|--|----------------------------|----|----|-------------------------|----|----|-------------------|----|----|-------------------|----|----|-------------------|----|----|-------------------|----|----|-------|----|----|
|  | District No. I.            |    |    | District No. II.        |    |    | District No. III. |    |    | District No. IV.  |    |    | District No. V.   |    |    | District No. VI.  |    |    |       |    |    |
|  | £                          | s. | d. | £                       | s. | d. | £                 | s. | d. | £                 | s. | d. | £                 | s. | d. | £                 | s. | d. | £     | s. | d. |
| 1. Balance in hand at close of previous week ...   | 13                         | 17 | 11 | 8                       | 15 | 3  |                   |    |    |                   |    |    |                   |    |    |                   |    |    | 22    | 13 | 2  |
| 2. Money since advanced by Guardians ...   | .                          | .  | .  | .                       | .  | .  |                   |    |    |                   |    |    |                   |    |    |                   |    |    | .     | .  | .  |
| 3. Total to be accounted for ...   | 13                         | 17 | 11 | 8                       | 15 | 3  |                   |    |    |                   |    |    |                   |    |    |                   |    |    | 22    | 13 | 2  |
| EXPENDITURE.   |                            |    |    |                         |    |    |                   |    |    |                   |    |    |                   |    |    |                   |    |    |       |    |    |
| 4. Out-door Relief ordered by the Board—   |                            |    |    |                         |    |    |                   |    |    |                   |    |    |                   |    |    |                   |    |    |       |    |    |
| In Money ..  | 6                          | 15 | 6  | 3                       | 16 | .  |                   |    |    |                   |    |    |                   |    |    |                   |    |    | 10    | 11 | 6  |
| In Kind ...  | .                          | .  | .  | .                       | .  | .  |                   |    |    |                   |    |    |                   |    |    |                   |    |    | .     | .  | .  |
| 5. Provisional Relief (in kind only), given by Relieving Officer on his own Responsibility | .                          | .  | .  | .                       | .  | .  |                   |    |    |                   |    |    |                   |    |    |                   |    |    | .     | .  | .  |
| 6. Orphans and Deserted Children boarded out ...   | .                          | 10 | 6  | .                       | 8  | 9  |                   |    |    |                   |    |    |                   |    |    |                   |    |    | .     | 19 | 3  |
| 7. Total Relief given  | 7                          | 6  | .  | 4                       | 4  | 9  |                   |    |    |                   |    |    |                   |    |    |                   |    |    | 18    | 10 | 9  |
| 8. Balance in hands at close of the week ...   | 6                          | 11 | 11 | 4                       | 10 | 6  |                   |    |    |                   |    |    |                   |    |    |                   |    |    | 11    | 2  | 5  |
| 9. TOTAL ...   | 13                         | 17 | 11 | 8                       | 15 | 3  |                   |    |    |                   |    |    |                   |    |    |                   |    |    | 22    | 13 | 2  |

NOTE.—Should any of the above-mentioned books not be duly authenticated and submitted at the meeting, the names thereof should be struck out in red ink, and the cause of the omission explained on the Minutes.

Dated this 20th day of November 1909.

Myler Beall  
 Clerk of Union.

The Clerk's Report on the execution of Orders previously made by the  
to the following effect :-

The Master's Estimate of Provisions and Necessaries required for the ensuing week was  
examined, and Orders were duly made for the several articles specified, namely :-

|     |     |              |
|-----|-----|--------------|
| 960 | lbs | White Bread  |
| 36  | ..  | Brown Bread  |
| 43  | ..  | Beef         |
| 42  | ..  | Mutton       |
| 70  |     | Gal's Milk   |
| 480 |     | SAF          |
| 2   | ..  | Porter       |
| 9   | ..  | St. Potatoes |
| 45  | lbs | Batter       |
| 3   | ..  | Tobacco      |



The Reports of the Master and other Officers were read, and Orders made thereon.

The following Orders of the Local Government Board for Ireland were laid before the Board, and directions given thereon, as follows:—

Galway County Council Archives



The following Letters from the Local Government Board and others & the Clerk, and Orders were made on them respectively, as follows:—

Read letter from Local Govt. Board dated 5<sup>th</sup> inst. sanctioning payment of a sum of Two pounds to the Porter of the Workhouse, for superintending sale of vegetables, offal, &c. of the Workhouse farm.

Ordered — The Guardians are satisfied that Mrs Doherty, is unable to pay cost of her maintenance in the Workhouse, and they hereby direct that no charge be made.

The Guardians adopted the resolution of sympathy passed at the Council's meeting, on the death of Dr Mac Cormack, late Bishop of Galway, and adjourned the remaining business to next meeting.

Galway County Council Archives

Galway County Council Archives

JAN M<sup>o</sup> DONNELLY & CO<sup>o</sup> LTD

**Gort Union.****BOARDED OUT CHILDREN, &c.**

MINUTES of Proceedings of the Board of Guardians of Gort Union, at their Meeting on

SATURDAY, the 20<sup>th</sup> day of November 19 09

Pursuant to notice, Mr. Kelly proposed  
and Mr. Nilan seconded:

"That £ 4 per annum be allowed  
for the child boarded out with Michael  
Brennan, Cloondine, and for which no  
sum was fixed on the 23<sup>rd</sup> October."

Passed

(Signed)

*James Burt*  
Clerk of the Union.



**Gort Union.**

**Medical Charities Act (14 & 15 Vic., cap. 68), Vaccination Acts, and  
Dispensary Houses Acts.**

MINUTES of Proceedings of the Board of Guardians, under the above-mentioned Acts, at a  
Meeting held on SATURDAY, the 20<sup>th</sup> day of November 1909.

PRESENT—In the Chair,—

*Mr. Patrick Lambert*

Other Guardians :—

*See Guardians Present Folio 18*

An Estimate of Medicines, &c. required by the Medical Officer of the \_\_\_\_\_  
Dispensary District, was laid before the Board, and directions were given thereon, as follows :—

An Invoice of Medicines forwarded by the Contractor, for the \_\_\_\_\_  
Dispensary District, in pursuance of an Order of the Board in their Minutes of \_\_\_\_\_  
having been received from him, the Clerk laid the Invoice before the Board, and was directed to forward  
the same (or reported that he had forwarded the same, as the case may be), to the Medical Officer of the  
District, retaining a copy of the Invoice for the use of the Guardians.

On application of the Medical Officer of the \_\_\_\_\_ Dispensary District the  
following supplies of Books, Stationery, Forms, or other requisites were ordered to be supplied :—

Galway County Council Archives

[These Reports are to be made up and forwarded by the Medical Officers to the Board of Guardians quarterly, viz, on the 31st March, 30th June, 30th September, and 31st December.]

Reports (Form P) containing the names of Children born in the District who are over three months of age and have not been vaccinated, from the Medical Officers of the following Dispensary Districts, viz. :-

\_\_\_\_\_  
\_\_\_\_\_  
\_\_\_\_\_

were laid before the Board and directions given thereon, as follows :-

Next Meeting of the Guardians to be held on SATURDAY, the 4<sup>th</sup> day of December 1909.

(Signed), *Angela Breen*  
Clerk of the Union.

*P. Lambert* Chairman.



[FORM 14.] **TABLE (1) FINANCIAL MINUTE**

(Article 7.)

(To be kept by the Clerk, who is to forward a copy to the Local Government but separate from, the general Minutes of each Finance meeting.)

**Gort Union.**

Finance Meeting, held the 20th day of November 1909

The Financial Statement Book of Receipts was produced and authenticated by the signature of the Chairman and the counter-signature of the Clerk, showing the sums which had been received during the month of October 1909, and the Ledger entries made in respect of same, as follows:—

| TABLE (a)  | DR. |    |    |
|--|-----|----|----|
|  | £   | s. | d. |
| County Council, Money supplied on demand of Guardians ... .. | 569 | .  | .  |
| Repayment of Relief ... ..                                   |     |    |    |
| Rents of Dispensary Residences ... ..                        |     |    |    |
| Farm Account—Sales of Farm Produce ... ..                    |     |    |    |
| Sales of Offal, old stores, and other Receipts ... ..        |     |    |    |
| Loans received ... ..  |     |    |    |
| Total amount of Lodgments as above ... ..                    | 569 |    |    |

The Financial Statement Book of Expenditure was produced and authenticated by the signature of the Chairman and the counter-signature of the Clerk, showing the sums which had been ordered for payment in the month of October 1909 and the Ledger entries made in respect of same.

Payments were ordered to be made for accounts as follows, and the authority for the amount thereof was signed for transmission to the Treasurer.

| TABLE (b)  | DR. |    |    |
|--|-----|----|----|
|  | £   | s. | d. |
| Sundry Accounts, viz. :—   |     |    |    |
| Provisions and Necessaries ... ..  | 116 | 12 | 4  |
| Clothing and Bedding ... ..  | 7   | 6  | 4  |
| Establishment—   |     |    |    |
| (a) Salaries ... ..  |     |    |    |
| (b) Medicines and Medical and Surgical Appliances ... ..                 | 13  | 18 | 5  |
| (c) Farm ... ..  | 59  | 17 | 5  |
| (d) Other Expenses ... ..  | 6   | 17 | 5  |
| Workhouse Burials ... ..   |     |    |    |
| District School Account ... ..   |     |    |    |
| District Hospital Account ... ..   |     |    |    |
| Maintenance in Extern Institutions ... ..                                | 7   | 10 | .  |
| Emigration Law and other Expenses ... ..                                 | 10  | 10 | .  |
| Medical Charities ... ..   | 34  | 14 | 6  |
| Lunacy Fees to Medical Officers ... ..                                   |     |    |    |
| Registration of Births, Deaths and Marriages, and of Vaccinations ... .. |     | 18 | .  |
| Superannuation Allowances ... ..   |     |    |    |
| Assessment and Results' Fees of Teachers ... ..                          |     |    |    |
| Expenses of Local Committees ... ..                                      |     |    |    |
| Repayment of Loans ... ..  |     |    |    |
| Relieving Officers' Accounts—Out-door Relief ... ..                      | 60  | .  | .  |
| Repayment of Advances under Seed Supply Acts ... ..                      |     |    |    |
| Unpaid Bills of last half-year ... ..                                    |     |    |    |
| Expenditure out of Loans ... ..  |     |    |    |
| Total Amount of Payments ordered as above ... ..                         | 318 | 4  | 5  |

[FORM 14]  
(Article 7)

### TABLE (2) STATISTICAL MINUTES.

(To be kept by the Clerk, who is to forward a copy to the Local Government Board along with separate from, the General Minutes of each Meeting.)

#### Gort Union.

Meeting held the 4<sup>th</sup> day of December 1909.

The following Relief Registers were produced, examined, and authenticated by the signature of the Chairman and counter-signature of the Clerk.

Indoor from No. 1710 to No. 1770  
Separate .. No. \_\_\_\_\_ to No. \_\_\_\_\_  
Outdoor .. No. \_\_\_\_\_ to No. \_\_\_\_\_

The Ledger was produced by the Clerk, posted up to date, with the proper Debits and Credits.

The following Books were submitted by the Clerk, he having first ascertained the accuracy of the entries made therein by the Master of the Workhouse, and authenticated the same by his signature:—

1. The Indoor Relief List.
2. The Provision Check Account.
3. The Provision Receipt and Consumption Account.

The Weekly Abstract of the Account of Provisions and Necessaries for the Week ending Saturday, the 27<sup>th</sup> day of November 1909, was submitted, of which the following is a Summary:—

|             | Stock in hand at close of preceding week |    |    | Received during the week |    |    | Total |    |    | Consumed during the week |             |       | Stock in hand at close of this week |    |     | Collective No. of Days |    |     |
|-------------|--|----|----|--------------------------|----|----|-------|----|----|--------------------------|-------------|-------|-------------------------------------|----|-----|------------------------|----|-----|
|             | £  | s. | d. | £                        | s. | d. | £     | s. | d. | By Inmates               | By Officers | Total | £                                   | s. | d.  |                        |    |     |
| Provisions  | 49                                       | 8  | 9  | 79                       | 19 | 7  | 79    | 8  | 4  |                          |             | 28    | 2                                   | 7  | 51  | 5                      | 9  | 992 |
| Necessaries | 84                                       |    | 5  |                          |    |    | 84    |    | 5  |                          |             | 5     |                                     | 7  | 78  | 19                     | 10 |     |
| Total       | 133                                      | 9  | 2  | 29                       | 19 | 7  | 163   | 8  | 9  |                          |             | 33    | 3                                   | 2  | 130 | 5                      | 7  |     |

The General Average Cost of an Inmate for the week was ... .. £ s. d. 4 : 0  $\frac{3}{4}$   
Average Cost in Infirmary ... .. £ s. d. 5 : 6  
Average Cost in Fever Hospital ... .. £ s. d. — : —

The following Books were also produced by the Clerk, their accuracy having been previously ascertained by him and authenticated by his signature—

1. The Clothing Materials Receipt and Conversion Book.
2. The Clothing Receipt Book.
3. The Inventory Book.
4. The Labour Book.
5. The Workhouse Farm Account.
6. The Medical Weekly Return and Extra Book.
7. The Outdoor Admission and Discharge Book.
8. The Indoor Admission and Discharge Book.

The Out-door Relief Lists, Application and Report Books, Order Check Books for Out-door Relief in kind, and Receipts and Expenditure Books of the several Relieving Officers were then produced by the Clerk, their accuracy having been previously ascertained by him and authenticated by his signature.

The Clerk's Report on the execution of Orders previously made by the  
to the following effect :-

The Master's Estimate of Provisions and Necessaries required for the ensuing week was  
examined, and Orders were duly made for the several articles specified, namely :-

|     |      |          |
|-----|------|----------|
| 940 | lbs  | W. Bread |
| 54  | "    | "        |
| 86  | "    | Meat     |
| 60  | gals | Milk     |
| 480 |      | Eggs     |
| 8   | doz  | Porter   |
| 1   | cu b | Flour    |
| 2   | "    | Bacon    |
| 1   | "    | Salt     |
| 60  | lbs  | Butter   |
| 3½  | "    | Tobacco  |



The Clerk's Report of Vaccination was read (this on the first meeting  
Number of successful cases :—

The Report of the Visiting Committee was read, and Orders were made thereon as follows :—

Galway County Council Archives



The Reports of the Master and other Officers were read, and Orders made thereon.

The following Orders of the Local Government Board for Ireland were laid before the Board, and directions given thereon, as follows:—

Galway County Council Archives

The following Letters from the Local Government Board and others  
Clerk, and Orders were made on them respectively, as follows:—

Submitted notification of transfer  
from County Fund of £569 being  
balance of 3<sup>rd</sup> instalment to 31<sup>st</sup>  
March ult.

Read letter from Local Govt Board  
dated 30<sup>th</sup> Nov. stating with reference  
to the proposal to provide a  
patient named Michael Moran  
with an artificial leg, that  
if Moran is an agricultural  
labourer the limb proposed is  
too light and its material  
and fittings too delicate.

Ordered — "This man is a tailor  
and the Guardians think the  
limb provided on the recommendation  
of the Medical Officer is quite  
suitable"

From same dated 22<sup>nd</sup> ulto  
sanctioning the proposal to  
board out John Conaire with  
Patrick Diviny, Drummalough.

The Guardians accepted Edward  
M. Kennedy's tender to supply  
4 doz Lucey's Blankets 84 x 54  
inches weighing 4 lb each, according  
to standard sample @  $2\frac{1}{4}\frac{3}{4}$  per lb

Ordered - That a pair of <sup>11</sup> ~~shoes~~ allowed to Mary Cunnolly - ~~and~~ not to exceed 7/6.

Ordered - That the usual X was allowance be provided for the inmates.

The Master was directed to bring an inmate named Anne Howard before the Magistrates for insubordination, but he need not press the charges if she & her child leave the Workhouse. The Solicitor to be requested to inquire into this girls case and if he thinks it desirable he is to take proceedings against the putative father of her child.

The cases of provisional relief, and applications for relief, were considered and decided on as set forth in the Application and Report Books.

The number of provisional admissions to the Workhouse confirmed was ...

Ditto disallowed ... ..

The number of Applicants admitted to the Workhouse was ...

The number of cases of provisional Out-door Relief was ...

Do in which relief was continued by the Guardians ...

The number of other Applicants in the Relieving Officers' Books relieved by order of the Guardians was ...

The number of Applicants for whom relief was not ordered was ...

The Bonds and other securities in force were laid before the Guardians by the Clerk, together with his Report thereon as follows: (this on the second Meeting after the Annual Election in every year).

(See also Minutes of the Guardians' proceedings under the Medical Charities Acts.)

Next Meeting of the Guardians to be held on SATURDAY, the 18<sup>th</sup> day of December 1909.

(Signed) [Signature]  
Clerk of the Union.



**Gort Union.**

**BOARDED OUT CHILDREN, &c.**

MINUTES of Proceedings of the Board of Guardians of Gort Union, at their Meeting on  
SATURDAY, the 4<sup>th</sup> day of December 1909.

Galway County Council Archives

(Signed) *D. J. O'Connell*  
Clerk of the Union.



**Gort Union.**

---

**Medical Charities Act (14 & 15 Vic., cap. 68), Vaccination Acts, and  
Dispensary Houses Acts.**

---

MINUTES of Proceedings of the Board of Guardians, under the above-mentioned Acts, at a  
Meeting held on SATURDAY, the 4<sup>th</sup> day of December 1909

PRESENT—In the Chair,—

Other Guardians :—

An Estimate of Medicines, &c., required by the Medical Officer of the Ardrinham & Kinvans  
Dispensary District, was laid before the Board, and directions were given thereon, as follows :—

*and the medicines ordered.*

An Invoice of Medicines forwarded by the Contractor, for the \_\_\_\_\_  
Dispensary District, in pursuance of an Order of the Board in their Minutes of \_\_\_\_\_  
having been received from him, the Clerk laid the Invoice before the Board, and was directed to forward  
the same (or reported that he had forwarded the same, as the case may be), to the Medical Officer of the  
District, retaining a copy of the Invoice for the use of the Guardians.

On application of the Medical Officer of the \_\_\_\_\_ Dispensary District the  
following supplies of Books, Stationery, Forms, or other requisites were ordered to be supplied :—

The following Orders of the Local Government Board for Ireland, under the Medical Act, 1894, were laid before the Board, and directions given thereon as follows:—

Order dated \_\_\_\_\_ (state subject.)

Read letter from Local Gov Board dated 1<sup>st</sup> inst - No 142467 - sanctioning payment of £1-1-0 to Dr. G. H. Foley for acting as temporary substitute for the Medical Officer of Kinvara District.

Relieving Officer Leah reported that Dr. G. H. Foley Medical Officer of <sup>Ardrahan</sup> Kinvara District was summoned as a Crown witness to the Couraught Winter Assize at Limerick on 28<sup>th</sup> ulto, and that he requisitioned Dr. Connolly of Kinvara to take charge of the District.

Ordered - Allow Dr. Connolly £3-3-0  
 Paid on 5 Dec

Galway County Council Archives



Galway County Council Archives

[These Reports are to be made up and forwarded by the Medical Officers to the Board of Guardians quarterly, viz., on the 31st March, 30th June, 30th September, and 31st December.]

Reports (Form P) containing the names of Children born in the District who are over three months of age and have not been vaccinated, from the Medical Officers of the following Dispensary Districts, viz.:

\_\_\_\_\_  
\_\_\_\_\_  
\_\_\_\_\_  
\_\_\_\_\_

were laid before the Board and directions given thereon, as follows:—

Next Meeting of the Guardians to be held on SATURDAY, the 18th day of December 1909.

(Signed), [Signature]  
Clerk of the Union.

[Signature] Chairman.



[FORM 14.] **TABLE (1) FINANCIAL M**  
(Article 7.)

(To be kept by the Clerk, who is to forward a copy to the Local Government but separate from, the general Minutes of each Finance meeting.)

**Gort Union.**

Finance Meeting, held the \_\_\_\_\_ day of \_\_\_\_\_ 19 \_\_\_\_\_

The Financial Statement Book of Receipts was produced and authenticated by the signature of the Chairman and the counter-signature of the Clerk, showing the sums which had been received during the month of \_\_\_\_\_ 19 \_\_\_\_\_, and the Ledger entries made in respect of same, as follows:—

| TABLE (a)  | DR. |    |    |
|--|-----|----|----|
|  | £   | s. | d. |
| County Council, Money supplied on demand of Guardians ... .. |     |    |    |
| Repayment of Relief ... ..                                   |     |    |    |
| Rents of Dispensary Residences ... ..                        |     |    |    |
| Farm Account—Sales of Farm Produce ... ..                    |     |    |    |
| Sales of Offal, old stores, and other Receipts ... ..        |     |    |    |
| Loans received ... ..  |     |    |    |
| Total amount of Lodgments as above ... ..                    |     |    |    |

The Financial Statement Book of Expenditure was produced and authenticated by the signature of the Chairman and the counter-signature of the Clerk, showing the sums which had been ordered for payment in the month of \_\_\_\_\_ 19 \_\_\_\_\_ and the Ledger entries made in respect of same.

Payments were ordered to be made for accounts as follows, and the authority for the amount thereof was signed for transmission to the Treasurer.

| TABLE (b)  | DR. |    |    |
|--|-----|----|----|
|  | £   | s. | d. |
| Sundry Accounts, viz. :—   |     |    |    |
| Provisions and Necessaries ... ..  |     |    |    |
| Clothing and Bedding ... ..  |     |    |    |
| Establishment—   |     |    |    |
| (a.) Salaries ... ..   |     |    |    |
| (b.) Medicines and Medical and Surgical Appliances ... ..                |     |    |    |
| (c.) Farm ... ..   |     |    |    |
| (d.) Other Expenses ... ..   |     |    |    |
| Workhouse Burials ... ..   |     |    |    |
| District School Account ... ..   |     |    |    |
| District Hospital Account ... ..   |     |    |    |
| Maintenance in Extern Institutions ... ..                                |     |    |    |
| Emigration Law and other Expenses ... ..                                 |     |    |    |
| Medical Charities ... ..   |     |    |    |
| Lunacy Fees to Medical Officers ... ..                                   |     |    |    |
| Registration of Births, Deaths and Marriages, and of Vaccinations ... .. |     |    |    |
| Superannuation Allowances ... ..   |     |    |    |
| Assessment and Results' Fees of Teachers ... ..                          |     |    |    |
| Expenses of Local Committees ... ..                                      |     |    |    |
| Repayment of Loans ... ..  |     |    |    |
| Relieving Officers' Accounts—Out-door Relief ... ..                      |     |    |    |
| Repayment of Advances under Seed Supply Acts ... ..                      |     |    |    |
| Unpaid Bills of last half-year ... ..                                    |     |    |    |
| Expenditure out of Loans ... ..  |     |    |    |
| Total Amount of Payments ordered as above ... ..                         |     |    |    |

Summary and Reconciliation of Treasurer's Account for the month ending

19

|   | Ordinary Account |    |    | Loans Account |    |    |
|---|------------------|----|----|---------------|----|----|
|   | £                | s. | d. | £             | s. | d. |
| <b>SUMMARY.</b>   |                  |    |    |               |    |    |
| Balance (if any) due by Treasurer as per last monthly statement ... ..    |                  |    |    |               |    |    |
| Total sums received during the month ... ..                               |                  |    |    |               |    |    |
| Total ... ..  |                  |    |    |               |    |    |
| Balance (if any) due to Treasurer as per last monthly statement ... ..    |                  |    |    |               |    |    |
| Payments ordered during the month ... ..                                  |                  |    |    |               |    |    |
| Total ... ..  |                  |    |    |               |    |    |
| Net Balance due _____ the Union (being difference of above Totals) ... .. |                  |    |    |               |    |    |
| <b>RECONCILEMENT.</b>   |                  |    |    |               |    |    |
| Balance per Bank Book due _____ Treasurer ... ..                          |                  |    |    |               |    |    |
| Outstanding Orders ... ..   |                  |    |    |               |    |    |
| Net Balance as above due _____ the Union ... ..                           |                  |    |    |               |    |    |

Dated this 28<sup>th</sup> day of Decr. 1909

Angela Pemb  
Clerk of the Union.

Galway County Council Archives



[FORM 14]  
(Article 7)

### TABLE (2) STATISTICAL MINUTES.

(To be kept by the Clerk, who is to forward a copy to the Local Government Board along with, and separate from, the General Minutes of each Meeting.)

#### Gort Union.

Meeting held the 18<sup>th</sup> day of December 1909.

The following Relief Registers were produced, examined, and authenticated by the signature of the Chairman and counter-signature of the Clerk.

Indoor from No. 1770 to No. 1809

Separate ,, No. \_\_\_\_\_ to No. \_\_\_\_\_

Outdoor ,, No. \_\_\_\_\_ to No. \_\_\_\_\_

The Ledger was produced by the Clerk, posted up to date, with the proper Debits and Credits.

The following Books were submitted by the Clerk, he having first ascertained the accuracy of the entries made therein by the Master of the Workhouse, and authenticated the same by his signature :-

1. The Indoor Relief List.
2. The Provision Check Account.
3. The Provision Receipt and Consumption Account.

The Weekly Abstract of the Account of Provisions and Necessaries for the Week ending Saturday, the 11<sup>th</sup> day of December 1909, was submitted, of which the following is a Summary :-

|             | Stock in hand at close of preceding week |    |    | Received during the week |    |    | Total |    |    | Consumed during the week |             |       | Stock in hand at close of this week |    |    | Collective No. of Days |    |   |     |
|-------------|--|----|----|--------------------------|----|----|-------|----|----|--------------------------|-------------|-------|-------------------------------------|----|----|------------------------|----|---|-----|
|             | £  | s. | d. | £                        | s. | d. | £     | s. | d. | By Inmates               | By Officers | Total | £                                   | s. | d. |                        |    |   |     |
| Provisions  | 51                                       | 17 |    | 20                       | 11 |    | 72    | 8  | 1  |                          |             |       | 26                                  | 2  | 5  | 46                     | 5  | 8 | 974 |
| Necessaries | 78                                       | 19 | 10 |                          |    |    | 78    | 19 | 10 |                          |             |       | 5                                   | 4  | 1  | 73                     | 15 | 9 |     |
| Total       | 130                                      | 16 | 11 | 20                       | 11 |    | 151   | 7  | 11 |                          |             |       | 31                                  | 6  | 6  | 120                    | 1  | 5 |     |

The General Average Cost of an Inmate for the week was ... .. : 4 : =

Average Cost in Infirmary ... .. : 5 : 9

Average Cost in Fever Hospital ... .. :     :    

The following Books were also produced by the Clerk, their accuracy having been previously ascertained by him and authenticated by his signature—

1. The Clothing Materials Receipt and Conversion Book.
2. The Clothing Receipt Book.
3. The Inventory Book.
4. The Labour Book.
5. The Workhouse Farm Account.
6. The Medical Weekly Return and Extra Book.
7. The Outdoor Admission and Discharge Book.
8. The Indoor Admission and Discharge Book.

The Out-door Relief Lists, Application and Report Books, Order Check Books for Out-door Relief in kind, and Receipts and Expenditure Books of the several Relieving Officers were then produced by the Clerk, their accuracy having been previously ascertained by him and authenticated by his signature.

The Clerk's Report on the execution of Orders previously made by the Board was read to the following effect:—

The Master's Estimate of Provisions and Necessaries required for the ensuing week was examined, and Orders were duly made for the several articles specified, namely:—

- 928 lbs. W Bread
- 90 .. B "
- 110 .. Meat
- 70 gals Milk
- 480 Eggs
- 112 lbs Butter
- 290 St Potatoes
- 3½ lbs Tobacco

Galway County Council Archives



The following Letters from the Local Government Board and others were read by Clerk, and Orders were made on them respectively, as follows:—

Submitted letter from Local Govt. Board dated 17<sup>th</sup> inst, forwarding an enclosure from the Commissioners of National Education relating to their District Inspector's last report on the Workhouse school.

The Inspector reports as follows:—

"The children are fairly well taught and are good at History, Drawing, and Singing. As they are so young the Teacher should try and introduce more games, stories, and object lessons into their course of training.

Ordered—

Referred to Teacher to comply.

Pursuant to notice.

Mr. Nilan, proposed, and Mr. Ryan, seconded:—

"That the Master of the Workhouse be allowed the same salary as was paid to the late Mr. Dullea, viz £70, a year.

Mr. Quinn, proposed, and Mr. Brady, Murray, seconded

"An amendment that no increase be granted"

On a poll being taken 7 voted for the amendment, and 18 against.

The original motion by Mr. Nilan, was adopted by 18 votes to 7.

The Master reported that he prosecuted  
 named Anne Howard for insubordination, she got  
 a months imprisonment. Her illegitimate child was  
 not committed with her, but two days later he got it  
 committed. He had to send an attendant with it  
 to Galway at cost of 7/6.

Ordered — Seven shillings expenses are approved.

The Master further reported that on the Medical Officer's  
 recommendation he sent a patient named Liggins  
 Dalton to the Galway Infirmary, and incurred  
 10/6 expenses in sending an attendant

. Approved.

The Master was allowed two days leave of absence.  
 The Matron to discharge his duties.

The Board allowed Rose Soherby £4: 7: 8, for  
 clothing destroyed by direction of the Medical Officer  
 while suffering from Fever, in the Hospital.

The Postman was allowed the usual Christmas  
 box of 10/6.

Dresses c 10/6 were ordered for the following  
 attendants: — Mary Moylan, Bridget O'Leary, Bridget Curter  
 Annie Kibbs and Mayanne Hynes.

The Porter was allowed 2 or 3 days leave of absence.  
 The Master to ~~arrange~~ arrange for discharge of his duty.

**Gort Union.**

**BOARDED OUT CHILDREN, &c.**

MINUTES of Proceedings of the Board of Guardians of Gort Union, at their Meeting on

SATURDAY, the 18<sup>th</sup> day of December 19 09.

*hil*

Galway County Council Archives

(Signed)

*Angela Buech*  
Clerk of the Union.



[This to be entered on the occasion of every appointment of a new Committee, after the triennial Election of Guardians and on the occasion of any election to fill any vacancies in a Dispensary Committee.]

The following persons were appointed as Wardens for the Electoral Dispensary District:—The Clerk to make a Return accordingly to the Local Government for Ireland of the names and addresses of the Guardians, Relieving Officers and Wardens authorized to issue Medical Relief Tickets in each Dispensary District, and to issue the prescribed Notification to the Wardens appointed, and to the Medical Officers of the respective Dispensary Districts, in pursuance of Articles 1, 2 and 3 of the General Regulations for Dispensary Districts.—The Clerk was also directed to supply Check Books of Medical Relief Tickets (Forms E 1, E 2 and E 3), in pursuance of Article 31 of the Dispensary Regulations, to each Guardian of the Union, and to each Relieving Officer and Warden therein, namely:—

| Name of Dispensary District   | Electoral Divisions | Names and Addresses of Wardens appointed for each Electoral Division |
|---|---------------------|--|
| <p style="font-size: 2em; opacity: 0.3; transform: rotate(-45deg); position: absolute; top: 50%; left: 50%;">Galway County Council Archives</p> |                     |  |

[This at the end of each half-year, in pursuance of Article 33 of the General Rules for Dispensary Districts, dated 24th February, 1899.]

An Account of the Expenses incurred for the service of each Dispensary District in the Union, for the half-year ended \_\_\_\_\_ 19 \_\_\_\_\_ having been submitted to the Board, the Clerk was directed to furnish the Medical Officer of each Dispensary District with a Statement of all the Expenses of the District which have been included in the half-year's Accounts. The following are the Total Expenses incurred for each Dispensary District for the half-year ended \_\_\_\_\_ 19 \_\_\_\_\_

|                   |   |   |   |   |       |
|-------------------|---|---|---|---|-------|
| Ardrahan District | - | - | - | £ | _____ |
| Gort District     | - | - | - | £ | _____ |
| Kinvara District  | - | - | - | £ | _____ |



Galway County Council Archives

[These Reports are to be made up and forwarded by the Medical Officers to the Board of Guardians quarterly, viz., on the 31st March, 30th June, 30th September, and 31st December.]

Reports (Form P) containing the names of Children born in the District who are over three months of age and have not been vaccinated, from the Medical Officers of the following Dispensary Districts, viz. —

\_\_\_\_\_  
\_\_\_\_\_  
\_\_\_\_\_

were laid before the Board and directions given thereon, as follows:—

Next Meeting of the Guardians to be held on SATURDAY, the 1st day of January 1910.

(Signed), Myles Breen  
Clerk of the Union.

P Lambert Chairman.

GORT UNION.

Population in 1901—14,201.

Present Net Annual Value, £

STATE of the Workhouse for the Week ending Saturday, the 25<sup>th</sup> day of December

| Number of Inmates for which accommodation is provided | No. that can be accommodated in each building | Total No. in each building on the above date | Able-bodied |      | Aged and Infirm Persons, and Adult Persons, above 15 years of age, but not working |      | Boys and Girls above 9 and under 15 years of age |       | Children above 5 and under 9 years of age | Children above 2 and under 5 years of age | Infants under 2 years of age | Casuals |         |          | TOTAL | RETURN OF SICK AND LUNATICS              |   |
|---|---|--|-------------|------|--|------|--|-------|---|---|------------------------------|---------|---------|----------|-------|--|---|
|   |   |  | Males       | Fem. | Males  | Fem. | Boys   | Girls |   |   |                              | Males   | Females | Children |       | Number in Hospital on the above date     | No. of Lunatics and Idiots in Workhouse on the above date |
| Workhouse .. .. .                                     | 729   | 138  |             |      |  |      |  |       |   |   |                              |         |         |          |       |  |   |
| Temporary Buildings ..                                | —   | —  |             |      |  |      |  |       |   |   |                              |         |         |          |       |  |   |
| Additional Workhouse ..                               | —   | —  |             |      |  |      |  |       |   |   |                              |         |         |          |       |  |   |
| Permanent Fever Hospital                              | 51  | —  |             |      |  |      |  |       |   |   |                              |         |         |          |       |  |   |
| Fever Sheds .. .. .                                   | —   | —  |             |      |  |      |  |       |   |   |                              |         |         |          |       |  |   |
| TOTAL .. .. .   | 780   | 138  |             |      |  |      |  |       |   |   |                              |         |         |          |       |  |   |
| Remaining on previous Saturday, as per last Return    |   |  | 13          | 15   | 39   | 37   | 2  | 1     | 12  | 6   | 9                            | 4       | 1       | 1        | 140   |  |   |
| Admitted during the Week                              |   |  | 4           | 1    | .  | .    | .  | .     | .   | .   | .                            | 25      | 3       | 1        | 34    |  |   |
| Born .. .. .  |   |  | .           | .    | .  | .    | .  | .     | .   | .   | .                            | .       | .       | .        | .     |  |   |
| TOTAL,  |   |  | 17          | 16   | 39   | 37   | 2  | 1     | 12  | 6   | 9                            | 29      | 4       | 2        | 174   |  |   |
| Discharged during the Week                            |   |  | 2           | 1    | 1  | .    | .  | .     | 1   | 1   | .                            | 26      | 3       | 1        | 36    |  |   |
| Died .. .. .  |   |  | .           | .    | .  | .    | .  | .     | .   | .   | .                            | .       | .       | .        | .     |  |   |
| Total Discharged and Died                             |   |  | 2           | 1    | 1  | .    | .  | .     | 1   | 1   | .                            | 26      | 3       | 1        | 36    |  |   |
| REMAINING ON THE ABOVE DATE                           |   |  | 15          | 15   | 38   | 37   | 2  | 1     | 11  | 5   | 9                            | 3       | 1       | 1        | 138   | No. at corresponding period last year, ) | 15 <sup>h</sup>   |

RETURN of DESTITUTE PERSONS relieved out of the Workhouse, as by Relief Lists, for the last Week ended Saturday, the 25<sup>th</sup> day of December 1909 authenticated and laid before the Board of Guardians at this Meeting.

| Relief Districts | Destitute Persons relieved out of the Workhouse (under 10 Vic., c. 31, s. 1) |   | Destitute Persons relieved out of the Workhouse (but not comprised in sec. 1) |   | Total relieved out of the Workhouse |         | Relief Districts | Destitute Persons relieved out of the Workhouse (under 10 Vic., c. 31, s. 1) |   | Destitute Persons relieved out of the Workhouse (but not comprised in sec. 1) |   | Total relieved out of the Workhouse |         |
|------------------|--|---|---|---|-------------------------------------|---------|------------------|--|---|---|---|-------------------------------------|---------|
|                  | Number of Cases relieved   | Number of Persons, including Applicant and Family dependent on him or her | Number of Cases relieved  | Number of Persons, including Applicant and Family dependent on him or her | Cases                               | Persons |                  | Number of Cases relieved   | Number of Persons, including Applicant and Family dependent on him or her | Number of Cases relieved  | Number of Persons, including Applicant and Family dependent on him or her | Cases                               | Persons |
| No. I.           | 107  | 121   | .   | .   | 107                                 | 121     | Bt. forward      |  |   |   |   |                                     |         |
| No. II.          |  |   |   |   |                                     |         | No. VI.          |  |   |   |   |                                     |         |
| No. III.         |  |   |   |   |                                     |         | No. VII.         |  |   |   |   |                                     |         |
| No. IV.          |  |   |   |   |                                     |         | No. VIII.        |  |   |   |   |                                     |         |
| No. V.           |  |   |   |   |                                     |         | No. IX.          |  |   |   |   |                                     |         |
| Car. forwd.      |  |   |   |   |                                     |         | No. X.           |  |   |   |   |                                     |         |
|                  |  |   |   |   |                                     |         | TOTAL ...        | 107  | 121   | .   | .   | 107                                 | 121     |

COPY OF MINUTES of Proceedings of the Board of Guardians, at a Meeting held on SATURDAY, the 1<sup>st</sup> day of January 1910.

PRESENT: In the Chair,—Mr. No meeting: no Guardians attending.  
Other Guardians:—Messrs.

- |                          |                     |                  |                       |
|--------------------------|---------------------|------------------|-----------------------|
| J. W. BRADY-MURRAY, J.P. | MICHAEL FEENEY      | THOMAS LALLY     | JOHN O'DEA            |
| MARTIN J. BURKE          | RICHARD P. FLAHERTY | PATRICK LAMBERT  | LAURENCE O'DONNELL    |
| JOHN CAHILL              | FERGUS GILL         | PATRICK LEWIS    | MICHAEL O'DONNELL     |
| JOHN CALLANAN            | PATRICK J. HAYES    | MICHAEL LINNANE  | MARTIN O'DONNELL      |
| WILLIAM CARR             | JAMES HEADD         | PATRICK LINNANE  | MCHL. O'DONOHUE, J.P. |
| MARTIN COEN              | COLMANN HIGGINS     | MICHAEL NAUGHTON | THOMAS O'NEILL        |
| JOHN CONNOLLY            | JAMES JOYCE         | JOHN NEWELL      | PATRICK O'SHAUGHNESSY |
| THOMAS P. CORLESS        | JOHN KEANE          | PATRICK NELLY    | JOHN QUINN            |
| JAMES CUNNINGHAM         | MORTIMER KEELY      | PATRICK F. NILAN | PATRICK RYAN          |
| EDWARD FAHY              | BARTHOLOMEW KEELY   | JAMES NOONE      | OWEN SWEENEY          |
|                          |                     |                  | MICHAEL TANNIAN       |

The Minutes of the last Meeting were read and signed



## Summary and Reconciliation of Treasurer's Account for the month ending the

November 19 09.

|   | Ordinary Account |    |    | Loans Account |    |    |
|---|------------------|----|----|---------------|----|----|
|   | £                | s. | d. | £             | s. | d. |
| <b>SUMMARY.</b>   |                  |    |    |               |    |    |
| Balance (if any) due by Treasurer as per last monthly statement ... ..        | 263              | 7  | .  |               |    |    |
| Total sums received during the month ... ..                                   | 569              | .  | .  |               |    |    |
| Total ... ..  | 832              | 7  | .  |               |    |    |
| Balance (if any) due to Treasurer as per last monthly statement ... ..        | .                | .  | .  |               |    |    |
| Payments ordered during the month ... ..                                      | 173              | 4  | 5  |               |    |    |
| Total ... ..  | 173              | 4  | 5  |               |    |    |
| Net Balance due <u>to</u> the Union (being difference of above Totals) ... .. |                  |    |    |               |    |    |
|   | 659              | 2  | 7  |               |    |    |
| <b>RECONCILEMENT.</b>   |                  |    |    |               |    |    |
| Balance per Bank Book due <u>by</u> Treasurer ... ..                          | 833              | 13 | 11 |               |    |    |
| Outstanding Orders ... ..   | 174              | 11 | 5  |               |    |    |
| Net Balance as above due <u>to</u> the Union ... ..                           | 659              | 2  | 6  |               |    |    |

Dated this 20<sup>th</sup> day of December 19 09.

Clerk of the Union.

The Abstract of the Accounts of the several Relieving Officers for the last Week  
the 1st day of January 1910, was submitted as follows:—

|  | Relieving Officer<br>GORMALLY |    |    | Relieving Officer<br>LEECH |    |    | Relieving Officer |    |    | Relieving Officer |    |    | Relieving Officer |    |    | Relieving Officer |    |    | TOTAL   |    |    |
|--|-------------------------------|----|----|----------------------------|----|----|-------------------|----|----|-------------------|----|----|-------------------|----|----|-------------------|----|----|---------|----|----|
|  | District No. I.               |    |    | District No. II.           |    |    | District No. III. |    |    | District No. IV.  |    |    | District No. V.   |    |    | District No. VI.  |    |    | £ s. d. |    |    |
|  | £                             | s. | d. | £                          | s. | d. | £                 | s. | d. | £                 | s. | d. | £                 | s. | d. | £                 | s. | d. | £       | s. | d. |
| 1. Balance in hand at close of previous week ...   | 6                             | 11 | .  | 2                          | 18 | .  |                   |    |    |                   |    |    |                   |    |    |                   |    |    | 4       | 9  | .  |
| 2. Money since advanced by Guardians ...   | 20                            | .  | .  | 20                         | .  | .  |                   |    |    |                   |    |    |                   |    |    |                   |    |    | 40      | .  | .  |
| 3. Total to be accounted for ...   | 26                            | 11 | .  | 22                         | 18 | .  |                   |    |    |                   |    |    |                   |    |    |                   |    |    | 49      | 9  | .  |
| <b>EXPENDITURE.</b>  |                               |    |    |                            |    |    |                   |    |    |                   |    |    |                   |    |    |                   |    |    |         |    |    |
| 4. Out-door Relief ordered by the Board—   |                               |    |    |                            |    |    |                   |    |    |                   |    |    |                   |    |    |                   |    |    |         |    |    |
| In Money ..  | 6                             | 19 | 6  | 3                          | 14 | .  |                   |    |    |                   |    |    |                   |    |    |                   |    |    | 10      | 13 | 6  |
| In Kind ...  | .                             | .  | .  | .                          | .  | .  |                   |    |    |                   |    |    |                   |    |    |                   |    |    | .       | .  | .  |
| 5. Provisional Relief (in kind only), given by Relieving Officer on his own Responsibility | .                             | .  | .  | .                          | .  | .  |                   |    |    |                   |    |    |                   |    |    |                   |    |    | .       | .  | .  |
| 6. Orphans and Deserted Children boarded out   | .                             | 12 | .  | .                          | 8  | 9  |                   |    |    |                   |    |    |                   |    |    |                   |    |    | 1       | .  | 9  |
| 7. Total Relief given  | 7                             | 11 | 6  | 4                          | 2  | 9  |                   |    |    |                   |    |    |                   |    |    |                   |    |    | 11      | 14 | 3  |
| 8. Balance in hands at close of the week ...   | 18                            | 19 | 6  | 18                         | 15 | 3  |                   |    |    |                   |    |    |                   |    |    |                   |    |    | 37      | 14 | 9  |
| 9. TOTAL ...   | 26                            | 11 | .  | 22                         | 18 | .  |                   |    |    |                   |    |    |                   |    |    |                   |    |    | 49      | 9  | .  |

NOTE.—Should any of the above-mentioned books not be duly authenticated and submitted at the meeting, the names thereof should be struck out in red ink, and the cause of the omission explained on the Minutes.

Dated this 1st day of January 1910.

Clerk of Union,

The Clerk's Report on the execution of Orders previously made by the Board to the following effect:—

The Master's Estimate of Provisions and Necessaries required for the ensuing week was examined, and Orders were duly made for the several articles specified, namely:—

|     |      |          |
|-----|------|----------|
| 900 | lbs. | W. Bread |
| 90  | "    | B. "     |
| 100 | "    | Meat     |
| 75  | Gals | Milk     |
| 440 |      | Eggs     |
| 108 | lbs  | Butter   |
| 40  | St.  | Potatoes |
| 5   | Doz  | Poster   |
| 3½  | lbs  | Tobacco. |



**Gort Union.**

**BOARDED OUT CHILDREN, &c.**

MINUTES of Proceedings of the Board of Guardians of Gort Union, at their Meeting on

SATURDAY, the 1st day of January 1910.

Galway County Council Archives

(Signed) \_\_\_\_\_

Clerk of the Union.

**Gort Union.**

---

**Medical Charities Act (14 & 15 Vic., cap. 68), Vaccination Acts, and  
Dispensary Houses Acts.**

---

MINUTES of Proceedings of the Board of Guardians, under the above-mentioned Acts, at a

Meeting held on SATURDAY, the 1<sup>st</sup> day of January 1910.

PRESENT—In the Chair,—

Other Guardians :—

*No meeting - No guardians attending*

An Estimate of Medicines, &c., required by the Medical Officer of the \_\_\_\_\_  
Dispensary District, was laid before the Board, and directions were given thereon, as follows :—

An Invoice of Medicines forwarded by the Contractor, for the \_\_\_\_\_  
Dispensary District, in pursuance of an Order of the Board in their Minutes of \_\_\_\_\_  
having been received from him, the Clerk laid the Invoice before the Board, and was directed to forward  
the same (or reported that he had forwarded the same, as the case may be), to the Medical Officer of the  
District, retaining a copy of the Invoice for the use of the Guardians.

On application of the Medical Officer of the \_\_\_\_\_ Dispensary District the  
following supplies of Books, Stationery, Forms, or other requisites were ordered to be supplied :—

Galway County Council Archives

[These Reports are to be made up and forwarded by the Medical Officers to the Board of Guardians quarterly, viz., on the 31st March, 30th June, 30th September, and 31st December.]

Reports (Form P) containing the names of Children born in the District who are over three months of age and have not been vaccinated, from the Medical Officers of the following Dispensary Districts, viz. :-

\_\_\_\_\_  
\_\_\_\_\_  
\_\_\_\_\_  
\_\_\_\_\_

were laid before the Board and directions given thereon, as follows :-

Next Meeting of the Guardians to be held on SATURDAY, the 8th day of January 1910.

(Signed), \_\_\_\_\_  
Clerk of the Union.

J Lambert \_\_\_\_\_ Chairman.



[FORM 14.]

**TABLE (1) FINANCIAL MIN**

(Article 7.)

(To be kept by the Clerk, who is to forward a copy to the Local Government Board a but separate from, the general Minutes of each Finance meeting.)

**Gort Union.**

Finance Meeting, held the \_\_\_\_\_ day of \_\_\_\_\_ 19 \_\_\_\_\_

The Financial Statement Book of Receipts was produced and authenticated by the signature of the Chairman and the counter-signature of the Clerk, showing the sums which had been received during the month of \_\_\_\_\_ 19 \_\_\_\_\_, and the Ledger entries made in respect of same, as follows:—

| TABLE (a)  | DR. |    |    |
|--|-----|----|----|
|  | £   | s. | d. |
| County Council, Money supplied on demand of Guardians ... .. |     |    |    |
| Repayment of Relief ... ..                                   |     |    |    |
| Rents of Dispensary Residences ... ..                        |     |    |    |
| Farm Account—Sales of Farm Produce ... ..                    |     |    |    |
| Sales of Offal, old stores, and other Receipts ... ..        |     |    |    |
| Loans received ... ..  |     |    |    |
| Total amount of Lodgments as above ... ..                    |     |    |    |

The Financial Statement Book of Expenditure was produced and authenticated by the signature of the Chairman and the counter-signature of the Clerk, showing the sums which had been ordered for payment in the month of \_\_\_\_\_ 19 \_\_\_\_\_ and the Ledger entries made in respect of same.

Payments were ordered to be made for accounts as follows, and the authority for the amount thereof was signed for transmission to the Treasurer.

| TABLE (b)  | DR. |    |    |
|--|-----|----|----|
|  | £   | s. | d. |
| Sundry Accounts, viz. :—   |     |    |    |
| Provisions and Necessaries ... ..  |     |    |    |
| Clothing and Bedding ... ..  |     |    |    |
| Establishment—   |     |    |    |
| (a.) Salaries ... ..   |     |    |    |
| (b.) Medicines and Medical and Surgical Appliances ... ..                |     |    |    |
| (c.) Farm ... ..   |     |    |    |
| (d.) Other Expenses ... ..   |     |    |    |
| Workhouse Burials ... ..   |     |    |    |
| District School Account ... ..   |     |    |    |
| District Hospital Account ... ..   |     |    |    |
| Maintenance in Extern Institutions ... ..                                |     |    |    |
| Emigration Law and other Expenses ... ..                                 |     |    |    |
| Medical Charities ... ..   |     |    |    |
| Lunacy Fees to Medical Officers ... ..                                   |     |    |    |
| Registration of Births, Deaths and Marriages, and of Vaccinations ... .. |     |    |    |
| Superannuation Allowances ... ..   |     |    |    |
| Assessment and Results' Fees of Teachers ... ..                          |     |    |    |
| Expenses of Local Committees ... ..                                      |     |    |    |
| Repayment of Loans ... ..  |     |    |    |
| Relieving Officers' Accounts—Out-door Relief ... ..                      |     |    |    |
| Repayment of Advances under Seed Supply Acts ... ..                      |     |    |    |
| Unpaid Bills of last half-year ... ..                                    |     |    |    |
| Expenditure out of Loans ... ..  |     |    |    |
| Total Amount of Payments ordered as above ... ..                         |     |    |    |

Summary and Reconciliation of Treasurer's Account for the month ending the last day of

19

|   | Ordinary Account |    |    | Loans Account |    |    |
|---|------------------|----|----|---------------|----|----|
|   | £                | s. | d. | £             | s. | d. |
| <b>SUMMARY.</b>   |                  |    |    |               |    |    |
| Balance (if any) due by Treasurer as per last monthly statement ... ..    |                  |    |    |               |    |    |
| Total sums received during the month ... ..                               |                  |    |    |               |    |    |
| Total ... ..  |                  |    |    |               |    |    |
| Balance (if any) due to Treasurer as per last monthly statement ... ..    |                  |    |    |               |    |    |
| Payments ordered during the month ... ..                                  |                  |    |    |               |    |    |
| Total ... ..  |                  |    |    |               |    |    |
| Net Balance due _____ the Union (being difference of above Totals) ... .. |                  |    |    |               |    |    |
| <b>RECONCILEMENT.</b>   |                  |    |    |               |    |    |
| Balance per Bank Book due _____ Treasurer ... ..                          |                  |    |    |               |    |    |
| Outstanding Orders ... ..   |                  |    |    |               |    |    |
| Net Balance as above due _____ the Union ... ..                           |                  |    |    |               |    |    |

Dated this \_\_\_\_\_ day of Jan. 1910

*Amey Burt*  
 \_\_\_\_\_  
 Clerk of the Union.

Galway County Council Archives

[FORM 14]  
(Article 7)

### TABLE (2) STATISTICAL MINUTES.

(To be kept by the Clerk, who is to forward a copy to the Local Government Board along separate from, the General Minutes of each Meeting.)

#### Gort Union.

Meeting held the 8th day of January 19 10.

The following Relief Registers were produced, examined, and authenticated by the signature of the Chairman and counter-signature of the Clerk.

Indoor from No. 1809 to No. 1900

Separate „ No. \_\_\_\_\_ to No. \_\_\_\_\_

Outdoor „ No. \_\_\_\_\_ to No. \_\_\_\_\_

The Ledger was produced by the Clerk, posted up to date, with the proper Debits and Credits.

The following Books were submitted by the Clerk, he having first ascertained the accuracy of the entries made therein by the Master of the Workhouse, and authenticated the same by his signature:—

1. The Indoor Relief List.
2. The Provision Check Account.
3. The Provision Receipt and Consumption Account.

The Weekly Abstract of the Account of Provisions and Necessaries for the Week ending Saturday, the 1st day of January 19 10, was submitted, of which the following is a Summary:—

|             | Stock in hand at close of preceding week |    |    | Received during the week |    |    | Total |    |    | Consumed during the week |             |       | Stock in hand at close of this week |    |    | Collective No. of Days |    |    |
|-------------|--|----|----|--------------------------|----|----|-------|----|----|--------------------------|-------------|-------|-------------------------------------|----|----|------------------------|----|----|
|             | £  | s. | d. | £                        | s. | d. | £     | s. | d. | By Inmates               | By Officers | Total | £                                   | s. | d. |                        |    |    |
| Provisions  | 46                                       | 4  | 7  | 25                       | 5  | 10 | 71    | 10 | 5  |                          |             |       | 28                                  | 4  | 8  | 43                     | 5  | 9  |
| Necessaries | 58                                       | 19 | 5  | 1                        | 5  | 8  | 60    | 5  | 1  |                          |             |       | 5                                   | .  | .  | 55                     | 5  | 1  |
| Total       | 105                                      | 4  | .  | 26                       | 11 | 6  | 131   | 15 | 6  |                          |             |       | 33                                  | 4  | 8  | 98                     | 10 | 10 |

The General Average Cost of an Inmate for the week was ... .. : £ 4 : 2<sup>7</sup>/<sub>4</sub>

Average Cost in Infirmary ... .. : 5 : 8

Average Cost in Fever Hospital ... .. : — : —

The following Books were also produced by the Clerk, their accuracy having been previously ascertained by him and authenticated by his signature—

1. The Clothing Materials Receipt and Conversion Book.
2. The Clothing Receipt Book.
3. The Inventory Book.
4. The Labour Book.
5. The Workhouse Farm Account.
6. The Medical Weekly Return and Extra Book.
7. The Outdoor Admission and Discharge Book.
8. The Indoor Admission and Discharge Book.

The Out-door Relief Lists, Application and Report Books, Order Check Books for Out-door Relief in kind, and Receipts and Expenditure Books of the several Relieving Officers were then produced by the Clerk, their accuracy having been previously ascertained by him and authenticated by his signature.



The Clerk's Report on the execution of Orders previously made by the Board was to the following effect:—

The Master's Estimate of Provisions and Necessaries required for the ensuing week was examined, and Orders were duly made for the several articles specified, namely:—

|     |      |          |
|-----|------|----------|
| 976 | lbs. | W. Bread |
| 57  | ..   | B. "     |
| 131 | ..   | But      |
| 73  | ..   | Mutton   |
| 78  | gals | Milk     |
| 540 | ..   | Eggs     |
| 49  | lbs  | Butter   |
| 100 | St.  | Potatoes |
| 3   | lbs  | Tobacco  |

Ordered — Reduce charge of Sarah Linnane's maintenance to 2/- per week; and make no charge for Mrs. Doherly.

Ordered — Request Mr. Hosengrave to examine the main cistern which is leaking, and report on same, and submit estimate for its repair.

Ordered — Provide two galvanized wheelbarrows which are required for farm use.

Galway County Council Archives

**Gort Union.**

**BOARDED OUT CHILDREN, &c.**

MINUTES of Proceedings of the Board of Guardians of Gort Union, at their Meeting on

SATURDAY, the 8<sup>th</sup> day of January 19 10.

*ml*

Galway County Council Archives

(Signed)

*Wm. J. Burt*  
Clerk of the Union.



[This to be entered on the occasion of every appointment of a new Committee, after the triennial Election of Guardians and on the occasion of any election to fill any vacancies in a Dispensary Committee.]

The following persons were appointed as Wardens for the Electoral Divisions Dispensary District:—The Clerk to make a Return accordingly to the Local Government for Ireland of the names and addresses of the Guardians, Relieving Officers and authorized to issue Medical Relief Tickets in each Dispensary District, and to issue the prescribed Notification to the Wardens appointed, and to the Medical Officers of the respective Dispensary Districts, in pursuance of Articles 1, 2 and 3 of the General Regulations for Dispensary Districts.—The Clerk was also directed to supply Check Books of Medical Relief Tickets (Forms E 1, E 2 and E 3), in pursuance of Article 31 of the Dispensary Regulations, to each Guardian of the Union, and to each Relieving Officer and Warden therein, namely:—

| Name of Dispensary District  | Electoral Divisions | Names and Addresses of Wardens appointed for each Electoral Division |
|--|---------------------|--|
| <p style="font-size: 2em; opacity: 0.3; transform: rotate(-30deg);">Galway County Council Archives</p> |                     |  |

[This at the end of each half-year, in pursuance of Article 33 of the General Rules for Dispensary Districts, dated 24th February, 1899.]

An Account of the Expenses incurred for the service of each Dispensary District in the Union, for the half-year ended \_\_\_\_\_ 19 \_\_\_\_\_ having been submitted to the Board, the Clerk was directed to furnish the Medical Officer of each Dispensary District with a Statement of all the Expenses of the District which have been included in the half-year's Accounts. The following are the Total Expenses incurred for each Dispensary District for the half-year ended \_\_\_\_\_ 19 \_\_\_\_\_

|                   |       |         |
|-------------------|-------|---------|
| Ardrahan District | - - - | £ _____ |
| Gort District     | - - - | £ _____ |
| Kinvara District  | - - - | £ _____ |

The following Orders of the Local Government Board for Ireland, under the Medical Act, were laid before the Board, and directions given thereon as follows:—

Order dated \_\_\_\_\_ (state subject.)

Read letter from Local Govt. Board dated 22<sup>nd</sup> ulto, requesting to be informed what action has been taken in regard to the several matters referred to in the Report of the Board's Medical Inspector on his recent inspection of the Dispensary Districts of the Union.  
"Adjourned."

From Local Govt. Board dated 7<sup>th</sup> inst, requesting to be informed what action has been taken to remedy the insanitary state of the Ardara Dispensary.  
Ordered—

The Guardians advertised for this work but got no tender.— Advertise again.

Read letter from Local Govt. Board dated 31<sup>st</sup> ulto, approving of the arrangements made for the discharge of the duties of the Medical Officer of Workhouse and Govt Dispensary District during his absence on leave.

From Local Govt. Board dated 31<sup>st</sup> ulto, sanctioning payment of £2:0:0 to Dr. Connolly for his services as temporary substitute for Dr. Foley, during his absence at Assizes.

In Dr. Foley's recommendation, a dispensary patient named Martin O. Donnell was ordered to be sent to Galway Hospital for treatment.

Galway County Council Archives

[These Reports are to be made up and forwarded by the Medical Officers to the Board of Guardians quarterly, viz., on the 31st March, 30th June, 30th September, and 31st December.]

Reports (Form P) containing the names of Children born in the District who are over three months of age and have not been vaccinated, from the Medical Officers of the following Dispensary Districts, viz. :-

\_\_\_\_\_  
\_\_\_\_\_  
\_\_\_\_\_

were laid before the Board and directions given thereon, as follows :-

Next Meeting of the Guardians to be held on SATURDAY, the 15<sup>th</sup>  
day of January 1910.

(Signed), *Amey Beech*  
Clerk of the Union.

*Peter Lambert* Chairman.



GORT UNION.

Population in 1901--14,201.

Present Net Annual Value, £ 43. 8. 0.

STATE of the Workhouse for the Week ending Saturday, the 8<sup>th</sup> day of January 1910

| Number of Inmates for which accommodation is provided | No. that can be accommodated in each building | Total No. in each building on the above date | Able-bodied |      | Aged and Infirm Persons, and Adult Persons, above 15 years of age, but not working |      | Boys and Girls above 9 and under 15 years of age |       | Children above 5 and under 9 years of age | Children above 2 and under 5 years of age | Infants under 2 years of age | Casuals |         |          | TOTAL | RETURN OF: SICK AND LUNATICS             |   |
|---|---|--|-------------|------|--|------|--|-------|---|---|------------------------------|---------|---------|----------|-------|--|---|
|   |   |  | Males       | Fem. | Males  | Fem. | Boys   | Girls |   |   |                              | Males   | Females | Children |       | Number in Hospital on the above date     | No. of Lunatics and Idiots in Workhouse on the above date |
| Workhouse .. .. .                                     | 729   | 138  |             |      |  |      |  |       |   |   |                              |         |         |          |       | 24                                       |   |
| Temporary Buildings ..                                | —   | —  |             |      |  |      |  |       |   |   |                              |         |         |          |       |  |   |
| Additional Workhouse ..                               | —   | —  |             |      |  |      |  |       |   |   |                              |         |         |          |       |  |   |
| Permanent Fever Hospital                              | 51  | —  |             |      |  |      |  |       |   |   |                              |         |         |          |       |  |   |
| Fever Sheds .. .. .                                   | —   | —  |             |      |  |      |  |       |   |   |                              |         |         |          |       |  |   |
| <b>TOTAL</b> .. .. .                                  | <b>780</b>                                    | <b>138</b>                                   |             |      |  |      |  |       |   |   |                              |         |         |          |       | <b>24</b>                                | <b>9</b>  |
| Remaining on previous Saturday, as per last Return    |   |  | 18          | 14   | 38   | 36   | 2  | 1     | 10  | 5   | 9                            | 1       | 1       |          | 135   |  |   |
| Admitted during the Week                              |   |  | 1           | 2    | 1  |      |  |       |   |   | 1                            | 14      | 1       |          | 20    |  |   |
| Born .. .. .  |   |  |             |      |  |      |  |       |   |   |                              |         |         |          |       |  |   |
| <b>TOTAL</b>  |   |  | 19          | 16   | 39   | 36   | 2  | 1     | 10  | 5   | 10                           | 15      | 2       |          | 155   |  |   |
| Discharged during the Week                            |   |  | 3           |      |  |      | 1  |       |   |   |                              | 11      | 2       |          | 17    |  |   |
| Died .. .. .  |   |  |             |      |  |      |  |       |   |   |                              |         |         |          |       |  |   |
| Total Discharged and Died                             |   |  | 3           |      |  |      | 1  |       |   |   |                              | 11      | 2       |          | 17    |  |   |
| REMAINING ON THE ABOVE DATE                           |   |  | 16          | 16   | 39   | 36   | 1  | 1     | 10  | 5   | 10                           | 4       |         |          | 138   | No. at corresponding period last year, } | 151   |

RETURN of DESTITUTE PERSONS relieved out of the Workhouse, as by Relief Lists, for the last Week ended Saturday, the 8<sup>th</sup> day of January 1910. authenticated and laid before the Board of Guardians at this Meeting.

| Relief Districts | Destitute Persons relieved out of the Workhouse (under 10 Vic., c. 31, s. 1) |   | Destitute Persons relieved out of the Workhouse (but not comprised in sec. 1) |   | Total relieved out of the Workhouse |         | Relief Districts | Destitute Persons relieved out of the Workhouse (under 10 Vic., c. 31, s. 1) |   | Destitute Persons relieved out of the Workhouse (but not comprised in sec. 1) |   | Total relieved out of the Workhouse |         |
|------------------|--|---|---|---|-------------------------------------|---------|------------------|--|---|---|---|-------------------------------------|---------|
|                  | Number of Cases relieved   | Number of Persons, including Applicant and Family dependent on him or her | Number of Cases relieved  | Number of Persons, including Applicant and Family dependent on him or her | Cases                               | Persons |                  | Number of Cases relieved   | Number of Persons, including Applicant and Family dependent on him or her | Number of Cases relieved  | Number of Persons, including Applicant and Family dependent on him or her | Cases                               | Persons |
| No. I.           | 116  | 120   |   |   | 116                                 | 120     | Bt. forward      |  |   |   |   |                                     |         |
| No. II.          |  |   |   |   |                                     |         | No. VI.          |  |   |   |   |                                     |         |
| No. III.         |  |   |   |   |                                     |         | No. VII.         |  |   |   |   |                                     |         |
| No. IV.          |  |   |   |   |                                     |         | No. VIII.        |  |   |   |   |                                     |         |
| No. V.           |  |   |   |   |                                     |         | No. IX.          |  |   |   |   |                                     |         |
| Car. forwd.      |  |   |   |   |                                     |         | No. X.           |  |   |   |   |                                     |         |
|                  |  |   |   |   |                                     |         | TOTAL            | 116  | 120   |   |   | 116                                 | 120     |

COPY OF MINUTES of Proceedings of the Board of Guardians, at a Meeting held on SATURDAY, the 15<sup>th</sup> day of January 1910.

PRESENT: In the Chair,—Mr. Patrick Lambert

Other Guardians:—Messrs.

J. W. BRADY-MURRAY, J.P.  
 MARTIN J. BURKE  
 JOHN CAHILL  
 JOHN CALLANAN  
 WILLIAM CARR  
 MARTIN COEN  
 JOHN CONNOLLY  
 THOMAS P. CORLESS  
 JAMES CUNNINGHAM  
 EDWARD FAHY

MICHAEL FEENEY  
 RICHARD P. FLAHERTY  
 FERGUS GILL  
 PATRICK J. HAYES  
 JAMES HEADD  
 GOLMANN HIGGINS  
 JAMES JOYCE  
 JOHN KEANE  
 MORTIMER KELLY  
 BARTHOLOMEW KEELY

THOMAS LALLY  
 PATRICK LAMBERT  
 PATRICK LEWIS  
 MICHAEL LINNANE  
 PATRICK LINNANE  
 MICHAEL NAUGHTON  
 JOHN NEWELL  
 PATRICK NELLY  
 PATRICK F. NILAN  
 JAMES NOONE

JOHN O'DEA  
 LAURENCE O'DONNELL  
 MICHAEL O'DONNELL  
 MARTIN O'DONNELL  
 MCHL. O'DONOHUE, J.P.  
 THOMAS O'NEILL  
 PATRICK O'SHAUGHNESSY  
 JOHN QUINN  
 PATRICK RYAN  
 OWEN SWEENEY  
 MICHAEL TANNIAN

The Minutes of the last Meeting were read and signed

10

[FORM 14.] **TABLE (1) FINANCIAL**  
(Article 7.)

(To be kept by the Clerk, who is to forward a copy to the Local Government Board along but separate from, the general Minutes of each Finance meeting.)

**Gort Union.**

Finance Meeting, held the 8<sup>th</sup> day of January 1910.

The Financial Statement Book of Receipts was produced and authenticated by the signature of the Chairman and the counter-signature of the Clerk, showing the sums which had been received during the month of December 1909, and the Ledger entries made in respect of same, as follows:—

| TABLE (a)  | DR. |    |    |
|--|-----|----|----|
|  | £   | s. | d. |
| County Council, Money supplied on demand of Guardians ... .. |     |    |    |
| Repayment of Relief ... ..                                   |     |    |    |
| Rents of Dispensary Residences ... ..                        |     |    |    |
| Farm Account—Sales of Farm Produce ... ..                    |     |    |    |
| Sales of Offal, old stores, and other Receipts ... ..        |     |    |    |
| Loans received ... ..  |     |    |    |
| Total amount of Lodgments as above ... ..                    |     |    | 1  |

The Financial Statement Book of Expenditure was produced and authenticated by the signature of the Chairman and the counter-signature of the Clerk, showing the sums which had been ordered for payment in the month of December 1909 and the Ledger entries made in respect of same.

Payments were ordered to be made for accounts as follows, and the authority for the amount thereof was signed for transmission to the Treasurer.

| TABLE (b)  | DR. |    |    |
|--|-----|----|----|
|  | £   | s. | d. |
| Sundry Accounts, viz. :—   |     |    |    |
| Provisions and Necessaries ... ..  | 164 | 19 | 3  |
| Clothing and Bedding ... ..  | :   | 16 | .  |
| Establishment—   |     |    |    |
| (a.) Salaries ... ..   | 175 | .  | .  |
| (b.) Medicines and Medical and Surgical Appliances ... ..                |     |    |    |
| (c.) Farm ... ..   | 2   | 13 | 11 |
| (d.) Other Expenses ... ..   | 10  | 8  | 6  |
| Workhouse Burials ... ..   |     |    |    |
| District School Account ... ..   |     |    |    |
| District Hospital Account ... ..   |     |    |    |
| Maintenance in Extern Institutions ... ..                                |     |    |    |
| Emigration Law and other Expenses ... ..                                 | 6   | 1  | .  |
| Medical Charities ... ..   | 140 | 17 | 6  |
| Lunacy Fees to Medical Officers ... ..                                   |     |    |    |
| Registration of Births, Deaths and Marriages, and of Vaccinations ... .. |     |    |    |
| Superannuation Allowances ... ..   | 23  | 5  | 3  |
| Assessment and Results' Fees of Teachers ... ..                          |     |    |    |
| Expenses of Local Committees ... ..                                      | 11  | 1  | -  |
| Repayment of Loans ... ..  |     |    |    |
| Relieving Officers' Accounts—Out-door Relief ... ..                      | 60  | .  | .  |
| Repayment of Advances under Seed Supply Acts ... ..                      |     |    |    |
| Unpaid Bills of last half-year ... ..                                    |     |    |    |
| Expenditure out of Loans <u>Reck Instalment</u> ... ..                   | 328 | 11 | 10 |
| Total Amount of Payments ordered as above ... ..                         | 923 | 14 | 3  |



[FORM 14]  
(Article 7)

### TABLE (2) STATISTICAL MINUTES.

(To be kept by the Clerk, who is to forward a copy to the Local Government Board along with, but separate from, the General Minutes of each Meeting.)

#### Gort Union.

Meeting held the 15<sup>th</sup> day of January 1910.

The following Relief Registers were produced, examined, and authenticated by the signature of the Chairman and counter-signature of the Clerk.

Indoor from No. 1900 to No. 1930

Separate „ No. \_\_\_\_\_ to No. \_\_\_\_\_

Outdoor „ No. \_\_\_\_\_ to No. \_\_\_\_\_

The Ledger was produced by the Clerk, posted up to date, with the proper Debits and Credits.

The following Books were submitted by the Clerk, he having first ascertained the accuracy of the entries made therein by the Master of the Workhouse, and authenticated the same by his signature:—

1. The Indoor Relief List.
2. The Provision Check Account.
3. The Provision Receipt and Consumption Account.

The Weekly Abstract of the Account of Provisions and Necessaries for the Week ending Saturday, the 8<sup>th</sup> day of January 1910, was submitted, of which the following is a Summary:—

|             | Stock in hand at close of preceding week |    |    | Received during the week |    |    | Total |    |    | Consumed during the week |             |       | Stock in hand at close of this week |    |    | Collective No. of Days |    |     |
|-------------|--|----|----|--------------------------|----|----|-------|----|----|--------------------------|-------------|-------|-------------------------------------|----|----|------------------------|----|-----|
|             | £  | s. | d. | £                        | s. | d. | £     | s. | d. | By Inmates               | By Officers | Total | £                                   | s. | d. |                        |    |     |
| Provisions  | 43                                       | 59 |    | 24                       | 10 | 5  | 67    | 16 | 2  |                          |             | 26    | 5                                   |    | 41 | 11                     | 2  | 950 |
| Necessaries | 55                                       | 51 |    | 43                       |    |    | 55    | 9  | 4  |                          |             | 5     | 7                                   |    | 50 | 8                      | 9  |     |
| Total       | 98                                       | 10 | 10 | 24                       | 14 | 8  | 122   | 5  | 6  |                          |             | 31    | 5                                   | 7  | 91 | 19                     | 11 |     |

The General Average Cost of an Inmate for the week was ... ..

Average Cost in Infirmary ... ..

Average Cost in Fever Hospital ... ..

£ s. d.  
: 3 : 7 ¼

: 4 : 10

: — : —

The following Books were also produced by the Clerk, their accuracy having been previously ascertained by him and authenticated by his signature—

1. The Clothing Materials Receipt and Conversion Book.
2. The Clothing Receipt Book.
3. The Inventory Book.
4. The Labour Book.
5. The Workhouse Farm Account.
6. The Medical Weekly Return and Extra Book.
7. The Outdoor Admission and Discharge Book.
8. The Indoor Admission and Discharge Book.

The Out-door Relief Lists, Application and Report Books, Order Check Books for Out-door Relief in kind, and Receipts and Expenditure Books of the several Relieving Officers were then produced by the Clerk, their accuracy having been previously ascertained by him and authenticated by his signature.



[FORM 14]  
(Article 7)

### TABLE (2) STATISTICAL MINUTES.

(To be kept by the Clerk, who is to forward a copy to the Local Government Board along with, but separate from, the General Minutes of each Meeting.)

#### Gort Union.

Meeting held the 15<sup>th</sup> day of January 1910.

The following Relief Registers were produced, examined, and authenticated by the signature of the Chairman and counter-signature of the Clerk.

Indoor from No. 1900 to No. 1930

Separate „ No. \_\_\_\_\_ to No. \_\_\_\_\_

Outdoor „ No. \_\_\_\_\_ to No. \_\_\_\_\_

The Ledger was produced by the Clerk, posted up to date, with the proper Debits and Credits.

The following Books were submitted by the Clerk, he having first ascertained the accuracy of the entries made therein by the Master of the Workhouse, and authenticated the same by his signature:—

1. The Indoor Relief List.
2. The Provision Check Account.
3. The Provision Receipt and Consumption Account.

The Weekly Abstract of the Account of Provisions and Necessaries for the Week ending Saturday, the 8<sup>th</sup> day of January 1910, was submitted, of which the following is a Summary:—

|             | Stock in hand at close of preceding week |    |    | Received during the week |    |    | Total |    |    | Consumed during the week |             |       | Stock in hand at close of this week |    |    | Collective No. of Days |    |     |
|-------------|--|----|----|--------------------------|----|----|-------|----|----|--------------------------|-------------|-------|-------------------------------------|----|----|------------------------|----|-----|
|             | £  | s. | d. | £                        | s. | d. | £     | s. | d. | By Inmates               | By Officers | Total | £                                   | s. | d. |                        | £  | s.  |
| Provisions  | 43                                       | 59 |    | 24                       | 10 | 5  | 67    | 16 | 2  |                          |             | 26    | 5                                   |    | 41 | 11                     | 2  | 950 |
| Necessaries | 55                                       | 51 |    | 43                       |    | 4  | 55    | 9  | 4  |                          |             | 5     | 7                                   |    | 50 | 8                      | 9  |     |
| Total       | 98                                       | 10 | 10 | 24                       | 14 | 8  | 122   | 25 | 6  |                          |             | 31    | 5                                   | 7  | 91 | 19                     | 11 |     |

The General Average Cost of an Inmate for the week was ... ..

Average Cost in Infirmary ... ..

Average Cost in Fever Hospital ... ..

£ s. d.  
: 3 : 7  $\frac{1}{4}$   
: 4 : 10  
: : :

The following Books were also produced by the Clerk, their accuracy having been previously ascertained by him and authenticated by his signature—

1. The Clothing Materials Receipt and Conversion Book.
2. The Clothing Receipt Book.
3. The Inventory Book.
4. The Labour Book.
5. The Workhouse Farm Account.
6. The Medical Weekly Return and Extra Book.
7. The Outdoor Admission and Discharge Book.
8. The Indoor Admission and Discharge Book.

The Out-door Relief Lists, Application and Report Books, Order Check Books for Out-door Relief in kind, and Receipts and Expenditure Books of the several Relieving Officers were then produced by the Clerk, their accuracy having been previously ascertained by him and authenticated by his signature.

The Abstract of the Accounts of the several Relieving Officers for the last Week ended Saturday, the 15<sup>th</sup> day of January 1910, was submitted as follows:—

|  | Relieving Officer GORMALLY |    |    | Relieving Officer LEECH |    |    | Relieving Officer |    |    | Relieving Officer |    |    | Relieving Officer |    |    | Relieving Officer |    |    | TOTAL   |              |              |
|--|----------------------------|----|----|-------------------------|----|----|-------------------|----|----|-------------------|----|----|-------------------|----|----|-------------------|----|----|---------|--------------|--------------|
|  | District No. I             |    |    | District No. II         |    |    | District No. III  |    |    | District No. IV   |    |    | District No. V    |    |    | District No. VI   |    |    | £ s. d. |              |              |
|  | £                          | s. | d. | £                       | s. | d. | £                 | s. | d. | £                 | s. | d. | £                 | s. | d. | £                 | s. | d. | £       | s.           | d.           |
| 1. Balance in hand at close of previous week ...   | 11                         | 12 | 6  | 14                      | 19 | 9  |                   |    |    |                   |    |    |                   |    |    |                   |    |    | 26      | 12           | 3            |
| 2. Money since advanced by Guardians ...   | .                          | .  | .  | .                       | .  | .  |                   |    |    |                   |    |    |                   |    |    |                   |    |    | .       | .            | .            |
| 3. Total to be accounted for ...   | 11                         | 12 | 6  | 14                      | 19 | 9  |                   |    |    |                   |    |    |                   |    |    |                   |    |    | 26      | 12           | 3            |
| EXPENDITURE.   |                            |    |    |                         |    |    |                   |    |    |                   |    |    |                   |    |    |                   |    |    |         |              |              |
| 4. Out-door Relief ordered by the Board—   |                            |    |    |                         |    |    |                   |    |    |                   |    |    |                   |    |    |                   |    |    |         |              |              |
| In Money ..  | 6                          | 17 | 6  | 3                       | 14 | 6  |                   |    |    |                   |    |    |                   |    |    |                   |    |    | 10      | 12           | .            |
| In Kind ...  | .                          | .  | .  | .                       | .  | .  |                   |    |    |                   |    |    |                   |    |    |                   |    |    | .       | .            | .            |
| 5. Provisional Relief (in kind only), given by Relieving Officer on his own Responsibility |                            |    |    |                         |    |    |                   |    |    |                   |    |    |                   |    |    |                   |    |    |         | 14           | 2            |
|  |                            |    |    |                         |    |    |                   |    |    |                   |    |    |                   |    |    |                   |    |    |         | <del>2</del> | <del>1</del> |
| 6. Orphans and Deserted Children boarded out ...   | 12                         | .  | .  | .                       | 8  | 9  |                   |    |    |                   |    |    |                   |    |    |                   |    |    | 1       | .            | 9            |
|  |                            |    |    |                         |    |    |                   |    |    |                   |    |    |                   |    |    |                   |    |    |         |              |              |
| 7. Total Relief given  | 8                          | 3  | 8  | 4                       | 3  | 3  |                   |    |    |                   |    |    |                   |    |    |                   |    |    | 12      | 6            | 11           |
|  |                            |    |    |                         |    |    |                   |    |    |                   |    |    |                   |    |    |                   |    |    |         |              |              |
| 8. Balance in hands at close of the week ...   | 3                          | 8  | 10 | 10                      | 16 | 6  |                   |    |    |                   |    |    |                   |    |    |                   |    |    | 14      | 5            | 4            |
| 9. TOTAL ...   | 11                         | 12 | 6  | 14                      | 19 | 9  |                   |    |    |                   |    |    |                   |    |    |                   |    |    | 26      | 12           | 3            |

NOTE.—Should any of the above-mentioned books not be duly authenticated and submitted at the meeting, the names thereof should be struck out in red ink, and the cause of the omission explained on the Minutes.

Dated this 15<sup>th</sup> day of January 1910.

Angus O'Connell  
S clerk of Union.

The Clerk's Report on the execution of Orders previously made by the Board was to the following effect :-

The Master's Estimate of Provisions and Necessaries required for the ensuing week was examined, and Orders were duly made for the several articles specified, namely :-

- 816 lbs . W. Bread
- 54 " B
- 40 " Beef
- 60 " Mutton
- 280 " O-meal
- 75 Gals Milk
- 480 Eggs
- 224 lbs Sugar
- 65 " Butter
- 4 " Tobacco

Galway County Council Archives



The master reported that he lodged a sum of £17:0:6 to the credit of the Union, made up in maintenance, stones sold, &c. &c.

The master submitted a letter from the Singer's sewing machine Co, which stated it will cost 40/- to put the ~~new~~ sewing machine in repair, and that in their opinion it would not warrant such an expenditure.

Ordered — The Guardians will take a new machine for a nett price of £7:10:0.

The master also reported that a tarpaulin to cover the bread cart is required, cost about 14/6.

Ordered —

Request contractor to supply tarpaulin

The master reported that he has been informed that an inmate of the Workhouse named Bridget Sill, was left £100 in her father's will. Her people ~~deny~~ <sup>deny</sup> this, and he is reporting the matter with a view of having it inquired into by the Board's Solicitor.

Ordered —

Write to Solicitor on this matter.

Ordered — Pay superannuation of Mr. Gormanally late Porter, monthly instead of quarterly, in future.

The cases of provisional relief, and applications for relief, were considered and decided on as set forth in the Application and Report Books.

The number of provisional admissions to the Workhouse confirmed was ...

Ditto disallowed ... ..

The number of Applicants admitted to the Workhouse was ... ..

The number of cases of provisional Out-door Relief was ... ..

Do in which relief was continued by the Guardians ... ..

The number of other Applicants in the Relieving Officers' Books relieved by order of the Guardians was ... ..

The number of Applicants for whom relief was not ordered was ... ..

The Bonds and other securities in force were laid before the Guardians by the Clerk, together with his Report thereon as follows: (this on the second Meeting after the Annual Election in every year).

(See also Minutes of the Guardians' proceedings under the Medical Charities Acts.)

Next Meeting of the Guardians to be held on SATURDAY, the 29<sup>th</sup> day of January 1910

(Signed) Angley Burt  
Clerk of the Union.

**Gort Union.****BOARDED OUT CHILDREN, &c.**

MINUTES of Proceedings of the Board of Guardians of Gort Union, at their Meeting on  
 SATURDAY, the 15<sup>th</sup> day of January 1910.

Ordered — clothing not to exceed <sup>s</sup>15/-  
 was allowed for a child at nurse  
 with Mrs Goen, Brown St. Gort

Pat Lumbert

(Signed)

*James Burt*

Clerk of the Union.



[These Reports are to be made up and forwarded by the Medical Officers to the Board of Guardians quarterly, viz., on the 31st March, 30th June, 30th September, and 31st December.]

Reports (Form P) containing the names of Children born in the District who are over three months of age and have not been vaccinated, from the Medical Officers of the following Dispensary Districts, viz.:-

|                 |          |                      |          |
|-----------------|----------|----------------------|----------|
| <i>Ardrahan</i> | <i>—</i> | <i>40 defaulters</i> |          |
| <i>Fort</i>     | <i>—</i> | <i>25</i>            | <i>"</i> |
| <i>Keinard</i>  | <i>—</i> | <i>38</i>            | <i>"</i> |

were laid before the Board and directions given thereon, as follows:-

*R.O. formally to serve usual notice at remuneration of 3/- per list respectively.*

Next Meeting of the Guardians to be held on SATURDAY, the *29<sup>th</sup>*  
 day of *January* 19*10*  
 (Signed), *James Breen*  
 Clerk of the Union.

Chairman.

GORT UNION.

Population in 1901—14,201.

Present Net Annual Value, £43,528: 0

STATE of the Workhouse for the Week ending Saturday, the 22nd day of January 1910.

| Number of Inmates for which accommodation is provided | No. that can be accommodated in each building | Total No. in each building on the above date | Able-bodied |           | Aged and Infirm Persons, and Adult Persons, above 15 years of age, but not working |           | Boys and Girls above 9 and under 15 years of age |          | Children above 5 and under 9 years of age | Children above 2 and under 5 years of age | Infants under 2 years of age | Casuals   |         |          | RETURN OF SICK AND LUNATICS          |   |
|---|---|--|-------------|-----------|--|-----------|--|----------|---|---|------------------------------|-----------|---------|----------|--------------------------------------|---|
|   |   |  | Males       | Fem.      | Males  | Fem.      | Boys   | Girls    |   |   |                              | Males     | Females | Children | Number in Hospital on the above date | No. of Lunatics and Idiots in Workhouse on the above date |
| Workhouse .. .. .                                     | 729   | 136  |             |           |  |           |  |          |   |   |                              |           |         |          |                                      |   |
| Temporary Buildings ..                                | —   | —  |             |           |  |           |  |          |   |   |                              |           |         |          |                                      |   |
| Additional Workhouse ..                               | —   | —  |             |           |  |           |  |          |   |   |                              |           |         |          |                                      |   |
| Permanent Fever Hospital                              | 51  | —  |             |           |  |           |  |          |   |   |                              |           |         |          |                                      |   |
| Fever Sheds .. .. .                                   | —   | —  |             |           |  |           |  |          |   |   |                              |           |         |          |                                      |   |
| <b>TOTAL .. .. .</b>                                  | <b>780</b>                                    | <b>136</b>                                   |             |           |  |           |  |          |   |   |                              |           |         |          |                                      |   |
| Remaining on previous Saturday, as per last Return    |   |  | 16          | 16        | 40   | 36        | 1  | 1        | 10  | 8   | 7                            | 6         |         |          | 141                                  |   |
| Admitted during the Week                              |   |  | 2           |           |  | 2         | 1  |          |   |   |                              |           |         |          | 16                                   |   |
| Born .. .. .  |   |  |             |           |  |           |  |          |   |   |                              |           |         |          |                                      |   |
| <b>TOTAL,</b>   |   |  | <b>18</b>   | <b>16</b> | <b>40</b>  | <b>38</b> | <b>2</b>   | <b>1</b> | <b>10</b>                                 | <b>8</b>                                  | <b>7</b>                     | <b>17</b> |         |          | <b>157</b>                           |   |
| Discharged during the Week                            |   |  | 4           |           | 2  | 2         |  |          |   |   |                              |           |         |          | 21                                   |   |
| Died .. .. .  |   |  |             |           |  |           |  |          |   |   |                              |           |         |          |                                      |   |
| Total Discharged and Died                             |   |  | 4           |           | 2  | 2         |  |          |   |   |                              |           |         |          | 21                                   |   |
| REMAINING ON THE ABOVE DATE                           |   |  | 14          | 16        | 38   | 38        | 2  | 1        | 10  | 8   | 7                            | 2         |         |          | 136                                  |   |
|   |   |  |             |           |  |           |  |          |   |   |                              |           |         |          |                                      | No. at corresponding period last year, 155.               |

RETURN of DESTITUTE PERSONS relieved out of the Workhouse, as by Relief Lists, for the last Week ended Saturday, the 22nd day of January 1910, authenticated and laid before the Board of Guardians at this Meeting.

| Relief Districts | Destitute Persons relieved out of the Workhouse (under 10 Vic., c. 31, s. 1) |   | Destitute Persons relieved out of the Workhouse (but not comprised in sec. 1) |   | Total relieved out of the Workhouse |         | Relief Districts | Destitute Persons relieved out of the Workhouse (under 10 Vic., c. 31, s. 1) |   | Destitute Persons relieved out of the Workhouse (but not comprised in sec. 1) |   | Total relieved out of the Workhouse |         |
|------------------|--|---|---|---|-------------------------------------|---------|------------------|--|---|---|---|-------------------------------------|---------|
|                  | Number of Cases relieved   | Number of Persons, including Applicant and Family dependent on him or her | Number of Cases relieved  | Number of Persons, including Applicant and Family dependent on him or her | Cases                               | Persons |                  | Number of Cases relieved   | Number of Persons, including Applicant and Family dependent on him or her | Number of Cases relieved  | Number of Persons, including Applicant and Family dependent on him or her | Cases                               | Persons |
| No. I.           | 106  | 120   |   |   | 106                                 | 120     | Bt. forward      |  |   |   |   |                                     |         |
| No. II.          |  |   |   |   |                                     |         | No. VI.          |  |   |   |   |                                     |         |
| No. III.         |  |   |   |   |                                     |         | No. VII.         |  |   |   |   |                                     |         |
| No. IV.          |  |   |   |   |                                     |         | No. VIII.        |  |   |   |   |                                     |         |
| No. V.           |  |   |   |   |                                     |         | No. IX.          |  |   |   |   |                                     |         |
|                  |  |   |   |   |                                     |         | No. X.           |  |   |   |   |                                     |         |
| Car. forwd.      |  |   |   |   |                                     |         | TOTAL            | 106  | 120   |   |   | 106                                 | 120     |

COPY OF MINUTES of Proceedings of the Board of Guardians, at a Meeting held on SATURDAY, the 29th day of January 1910.

PRESENT: In the Chair,—Mr. Patrick Lambert

Other Guardians:—Messrs.

- |                          |                     |                  |                       |
|--------------------------|---------------------|------------------|-----------------------|
| J. W. BRADY-MURRAY, J.P. | MICHAEL FEENEY      | THOMAS LALLY     | JOHN O'DEA            |
| MARTIN J. BURKE          | RICHARD P. FLAHERTY | PATRICK LAMBERT  | LAURENCE O'DONNELL    |
| JOHN CAHILL              | FERGUS GILL         | PATRICK LEWIS    | MICHAEL O'DONNELL     |
| JOHN CALLANAN            | PATRICK J. HAYES    | MICHAEL LINNANE  | MARTIN O'DONNELL      |
| WILLIAM CARR             | JAMES HEADD         | PATRICK LINNANE  | MCHL. O'DONOHUE, J.P. |
| MARTIN COEN              | COLMANN HIGGINS     | MICHAEL NAUGHTON | THOMAS O'NEILL        |
| JOHN CONNOLLY            | JAMES JOYCE         | JOHN NEWELL      | PATRICK O'SHAUGHNESSY |
| THOMAS P. CORLESS        | JOHN KEANE          | PATRICK NELLY    | JOHN QUINN            |
| JAMES CUNNINGHAM         | MORTIMER KEELY      | PATRICK F. NILAN | PATRICK RYAN          |
| EDWARD FAHY              | BARTHOLOMEW KEELY   | JAMES NOONE      | OWEN SWEENEY          |
|                          |                     |                  | MICHAEL TANNIAN       |

The Minutes of the last Meeting were read and signed



[FORM 14.]

**TABLE (1) FINANCIAL MINUTES.**

(Article 7.)

(To be kept by the Clerk, who is to forward a copy to the Local Government Board but separate from, the general Minutes of each Finance meeting.)

**Gort Union.**

Finance Meeting, held the \_\_\_\_\_ day of \_\_\_\_\_ 19 \_\_\_\_\_

The Financial Statement Book of Receipts was produced and authenticated by the signature of the Chairman and the counter-signature of the Clerk, showing the sums which had been received during the month of \_\_\_\_\_ 19 \_\_\_\_\_, and the Ledger entries made in respect of same, as follows:—

| TABLE (a)  | Dr. |    |    |
|--|-----|----|----|
|  | £   | s. | d. |
| County Council, Money supplied on demand of Guardians ... .. |     |    |    |
| Repayment of Relief ... ..                                   |     |    |    |
| Rents of Dispensary Residences ... ..                        |     |    |    |
| Farm Account—Sales of Farm Produce ... ..                    |     |    |    |
| Sales of Offal, old stores, and other Receipts ... ..        |     |    |    |
| Loans received ... ..  |     |    |    |
| Total amount of Lodgments as above ... ..                    |     |    |    |

The Financial Statement Book of Expenditure was produced and authenticated by the signature of the Chairman and the counter-signature of the Clerk, showing the sums which had been ordered for payment in the month of \_\_\_\_\_ 19 \_\_\_\_\_ and the Ledger entries made in respect of same.

Payments were ordered to be made for accounts as follows, and the authority for the amount thereof was signed for transmission to the Treasurer.

| TABLE (b)  | Dr. |    |    |
|--|-----|----|----|
|  | £   | s. | d. |
| Sundry Accounts, viz. :—   |     |    |    |
| Provisions and Necessaries ... ..  |     |    |    |
| Clothing and Bedding ... ..  |     |    |    |
| Establishment—   |     |    |    |
| (a.) Salaries ... ..   |     |    |    |
| (b.) Medicines and Medical and Surgical Appliances ... ..                |     |    |    |
| (c.) Farm ... ..   |     |    |    |
| (d.) Other Expenses ... ..   |     |    |    |
| Workhouse Burials ... ..   |     |    |    |
| District School Account ... ..   |     |    |    |
| District Hospital Account ... ..   |     |    |    |
| Maintenance in Extern Institutions ... ..                                |     |    |    |
| Emigration Law and other Expenses ... ..                                 |     |    |    |
| Medical Charities ... ..   |     |    |    |
| Lunacy Fees to Medical Officers ... ..                                   |     |    |    |
| Registration of Births, Deaths and Marriages, and of Vaccinations ... .. |     |    |    |
| Superannuation Allowances ... ..   |     |    |    |
| Assessment and Results' Fees of Teachers ... ..                          |     |    |    |
| Expenses of Local Committees ... ..                                      |     |    |    |
| Repayment of Loans ... ..  |     |    |    |
| Relieving Officers' Accounts—Out-door Relief ... ..                      |     |    |    |
| Repayment of Advances under Seed Supply Acts ... ..                      |     |    |    |
| Unpaid Bills of last half-year ... ..                                    |     |    |    |
| Expenditure out of Loans ... ..  |     |    |    |
| Total Amount of Payments ordered as above ... ..                         |     |    |    |



[FORM 14]  
(Article 7)

## TABLE (2) STATISTICAL MINUTES.

(To be kept by the Clerk, who is to forward a copy to the Local Government Board along with, but separate from, the General Minutes of each Meeting.)

### Gort Union.

Meeting held the 22<sup>nd</sup> day of January 1910.

The following Relief Registers were produced, examined, and authenticated by the signature of the Chairman and counter-signature of the Clerk.

Indoor from No. 1930 to No. 1960

Separate ,, No. \_\_\_\_\_ to No. \_\_\_\_\_

Outdoor ,, No. \_\_\_\_\_ to No. \_\_\_\_\_

The Ledger was produced by the Clerk, posted up to date, with the proper Debits and Credits.

The following Books were submitted by the Clerk, he having first ascertained the accuracy of the entries made therein by the Master of the Workhouse, and authenticated the same by his signature:—

1. The Indoor Relief List.
2. The Provision Check Account.
3. The Provision Receipt and Consumption Account.

The Weekly Abstract of the Account of Provisions and Necessaries for the Week ending Saturday, the 22<sup>nd</sup> day of January 1910, was submitted, of which the following is a Summary:—

|             | Stock in hand at close of preceding week<br>£ s. d. | Received during the week<br>£ s. d. | Total<br>£ s. d. | Consumed during the week |                        |                  | Stock in hand at close of this week<br>£ s. d. | Collective No. of Days |
|-------------|---|-------------------------------------|------------------|--------------------------|------------------------|------------------|--|------------------------|
|             |   |                                     |                  | By Inmates<br>£ s. d.    | By Officers<br>£ s. d. | Total<br>£ s. d. |  |                        |
| Provisions  | 40 7 2  | 9 12 7                              | 9 19 9           |                          |                        | 27 6 2           | 42 13 6  | 955                    |
| Necessaries | 49 10 11  | -                                   | 49 10 11         |                          |                        | 4 19 2           | 44 9 11  |                        |
| Total       | 89 18 1   | 9 12 7                              | 119 10 8         |                          |                        | 32 5 5           | 87 5 3   |                        |

The General Average Cost of an Inmate for the week was ... .. £ s. d.

Average Cost in Infirmary ... .. £ s. d.

Average Cost in Fever Hospital ... .. £ s. d.

The following Books were also produced by the Clerk, their accuracy having been previously ascertained by him and authenticated by his signature—

1. The Clothing Materials Receipt and Conversion Book.
2. The Clothing Receipt Book.
3. The Inventory Book.
4. The Labour Book.
5. The Workhouse Farm Account.
6. The Medical Weekly Return and Extra Book.
7. The Outdoor Admission and Discharge Book.
8. The Indoor Admission and Discharge Book.

The Out-door Relief Lists, Application and Report Books, Order Check Books for Out-door Relief in kind, and Receipts and Expenditure Books of the several Relieving Officers were then produced by the Clerk, their accuracy having been previously ascertained by him and authenticated by his signature.

The Abstract of the Accounts of the several Relieving Officers for the  
 the 29th day of January 1910, was submit

|  | Relieving Officer GORMALLY |    |    | Relieving Officer LEECH |    |    | Relieving Officer |    |    | Relieving Officer |    |    | Relieving Officer |    |    | TOTAL            |    |    |         |  |
|--|----------------------------|----|----|-------------------------|----|----|-------------------|----|----|-------------------|----|----|-------------------|----|----|------------------|----|----|---------|--|
|  | District No. I.            |    |    | District No. II.        |    |    | District No. III. |    |    | District No. IV.  |    |    | District No. V.   |    |    | District No. VI. |    |    | £ s. d. |  |
|  | £                          | s. | d. | £                       | s. | d. | £                 | s. | d. | £                 | s. | d. | £                 | s. | d. | £                | s. | d. |         |  |
| 1. Balance in hand at close of previous week ...   | 15                         | 10 | 6  | 6                       | 13 | 3  |                   |    |    |                   |    |    |                   |    |    | 22               | 3  | 9  |         |  |
| 2. Money since advanced by Guardians ...   |                            |    |    |                         |    |    |                   |    |    |                   |    |    |                   |    |    |                  |    |    |         |  |
| 3. Total to be accounted for ...   | 15                         | 10 | 6  | 6                       | 13 | 3  |                   |    |    |                   |    |    |                   |    |    | 22               | 3  | 9  |         |  |
| EXPENDITURE.   |                            |    |    |                         |    |    |                   |    |    |                   |    |    |                   |    |    |                  |    |    |         |  |
| 4. Out-door Relief ordered by the Board—   |                            |    |    |                         |    |    |                   |    |    |                   |    |    |                   |    |    |                  |    |    |         |  |
| In Money ..  | 6                          | 17 | 6  | 3                       | 14 | 6  |                   |    |    |                   |    |    |                   |    |    | 10               | 12 | .. |         |  |
| In Kind ...  |                            |    |    |                         |    |    |                   |    |    |                   |    |    |                   |    |    |                  |    |    |         |  |
| 5. Provisional Relief (in kind only), given by Relieving Officer on his own Responsibility |                            |    |    |                         |    |    |                   |    |    |                   |    |    |                   |    |    |                  |    |    |         |  |
| 6. Orphans and Deserted Children boarded out ...   |                            | 12 | .. |                         | 8  | 9  |                   |    |    |                   |    |    |                   |    |    |                  | 1  | .. | 9       |  |
| 7. Total Relief given  | 7                          | 9  | 6  | 4                       | 3  | 3  |                   |    |    |                   |    |    |                   |    |    |                  | 11 | 12 | 9       |  |
| 8. Balance in hands at close of the week ...   | 8                          | 1  | .. | 2                       | 10 | .. |                   |    |    |                   |    |    |                   |    |    |                  | 10 | 11 | ..      |  |
| 9. TOTAL ...   | 15                         | 10 | 6  | 6                       | 13 | 3  |                   |    |    |                   |    |    |                   |    |    |                  | 22 | 3  | 9       |  |

NOTE.—Should any of the above-mentioned books not be duly authenticated and submitted at the meeting, the names thereof should be struck out in red ink, and the cause of the omission explained on the Minutes.

Dated this 29th day of January 1910.

John Gormally  
 Acting Clerk of Union.



The Clerk's Report on the execution of Orders previously to the following effect :-

The Master's Estimate of Provisions and Necessaries required for the ensuing week was examined, and Orders were duly made for the several articles specified, namely :-

|     |      |          |
|-----|------|----------|
| 830 | lbs  | A. Bread |
| 78  | "    | B        |
| 60  | "    | Meat     |
| 80  | gals | Milk     |
| 470 |      | Eggs     |
| 140 | lbs  | Potatoes |
| 49  | lbs  | Butter   |
| 7   | "    | Bacon    |
| 5   | "    | Tobacco  |

Galway County Council Archives



Dr. Moran, Medical officer of Govt Dispensary, submitted a certificate, stating that Mr. Baker, clerk, was suffering from appendicitis, and will not be fit for duty for fourteen days.

Resolved — That Mr. John Gormally, be appointed to discharge the clerk's duties, during his illness, for a fortnight, at remuneration of 30/- per week, half to be paid by the District Council, and the other half by the Board of Guardians.

A supply of medicines and appliances were ordered for Govt Workhouse.

The Master reported that the Singer Sewing Co. supplied the sewing machine catalogued at £11:10:0, for the price offered by the Guardians, namely £7:10:0, and the old machine. "approved"

The Master was allowed three days leave of absence, the Matron to discharge his duties.

Galway County Council Archives

The cases of provisional relief, and applications for relief, were considered and decided on as set forth in the Application and Report Books.

The number of provisional admissions to the Workhouse confirmed was ...

Ditto disallowed ... ..

The number of Applicants admitted to the Workhouse was ... ..

The number of cases of provisional Out-door Relief was ... ..

Do in which relief was continued by the Guardians ... ..

The number of other Applicants in the Relieving Officers' Books relieved by order of the Guardians was ... ..

The number of Applicants for whom relief was not ordered was ... ..

The Bonds and other securities in force were laid before the Guardians by the Clerk, together with his Report thereon as follows: (this on the second Meeting after the Annual Election in every year).

(See also Minutes of the Guardians' proceedings under the Medical Charities Acts.)

Next Meeting of the Guardians to be held on SATURDAY, the 12th day of February 1910.

(Signed) John Gormally Acting Clerk of the Union.

**Gort Union.****BOARDED OUT CHILDR**

MINUTES of Proceedings of the Board of Guardians of Gort Union, at t.

SATURDAY, the 29<sup>th</sup> day of January 1910.

clothing not to exceed  $15^s$  each. were allowed for boarded out children named John Walsh and Peter Carroll.

Read letter from Local Board dated 25<sup>th</sup> inst, requesting to be informed whether the boarded-out children, Mary Flynn, and John Walsh, who were absent from school on 11 and 10 days respectively, during the month of December, on the grounds of illness, received medical attendance.

Ordered - These children had only slight colds, and the foster parents did not consider it necessary to procure medical attendance.

(Signed)

John Gormally  
Acting Clerk of the Union.



**R THORP**, B.Sc. (London), F.I.C.,  
B.Sc. (Leeds), F.C.S.,  
Government and Public Analyst.  
HOURS—10 TO 5.

**ANALYTICAL LABORATORY**  
57 GEORGE  
Limerick,

OS. 3  
REPORT upon 3 Samples of Drugs forwarded for Analysis, from  
Union Widjahan Dispensary, and received by me on 3.1.1917  
Drugs received in Stock 25.1.17  
Report Signed \_\_\_\_\_

I have examined the Samples as specified below, with the following results

1. Name of Medicine Linct Digitalis . 15.  
Specific Gravity 0.934  
Extract 4.44 grammes in 100 c.c.  
Alkaloids " " "  
Alcohol by volume 56.41  
Observations Genuine
2. Name of Medicine Liq Morph. Hcl  
Specific Gravity 0.979  
Extract \_\_\_\_\_ grammes in 100 c.c.  
Alkaloids Hcl 1.00 " " "  
Alcohol by volume 21.39  
Observations Genuine
3. Name of Medicine Mist Sassafras  
Specific Gravity 1.14  
Extract 24.74 grammes in 100 c.c.  
Alkaloids " " "  
Alcohol by volume 7.40 9  
Observations Deficient in alcohol

These Samples were \_\_\_\_\_ carefully put up and labelled in accordance with the  
Local Government Board's instructions.

Signed, Walter H. P. D. C.

[This to be entered on the occasion of every appointment of a new Committee, after the triennial Election of Guardians and on the occasion of any election to fill any vacancies in a Dispensary Committee.]

The following persons were appointed as Ward for the Electoral Divisions of each Dispensary District:—The Clerk to make a Return accordingly to the Local Government Board for Ireland of the names and addresses of the Guardians, Relieving Officers and Wardens authorized to issue Medical Relief Tickets in each Dispensary District, and to issue the prescribed Notification to the Wardens appointed, and to the Medical Officers of the respective Dispensary Districts, in pursuance of Articles 1, 2, 3, 4, 5, 6, 7, 8, 9, 10, 11, 12, 13, 14, 15, 16, 17, 18, 19, 20, 21, 22, 23, 24, 25, 26, 27, 28, 29, 30, 31, 32, 33, 34, 35, 36, 37, 38, 39, 40, 41, 42, 43, 44, 45, 46, 47, 48, 49, 50, 51, 52, 53, 54, 55, 56, 57, 58, 59, 60, 61, 62, 63, 64, 65, 66, 67, 68, 69, 70, 71, 72, 73, 74, 75, 76, 77, 78, 79, 80, 81, 82, 83, 84, 85, 86, 87, 88, 89, 90, 91, 92, 93, 94, 95, 96, 97, 98, 99, 100. The Clerk was also directed to supply Check Books of Medical Relief Tickets (Forms E 1, E 2 and E 3), in pursuance of Article 31 of the Dispensary Regulations, to each Guardian of the Union, and to each Relieving Officer and Warden therein, namely:—

| Name of Dispensary District | Electoral Divisions | Names and Addresses of Wardens appointed for each Division |
|-----------------------------|---------------------|--|
|                             |                     | 190<br>70<br>190<br>70<br>190<br>Standard                  |

[This at the end of each half-year, in pursuance of Article 33 of the General Rules for Dispensary Districts, dated 24th February, 1899.]

An Account of the Expenses incurred for the service of each Dispensary District in the Union, for the half-year ended \_\_\_\_\_ 19 \_\_\_\_\_ having been submitted to the Board, the Clerk was directed to furnish the Medical Officer of each Dispensary District with a Statement of all the Expenses of the District which have been included in the half-year's Accounts. The following are the Total Expenses incurred for each Dispensary District for the half-year ended \_\_\_\_\_ 19 \_\_\_\_\_

|                   |   |   |   |         |
|-------------------|---|---|---|---------|
| Ardrahan District | - | - | - | £ _____ |
| Gort District     | - | - | - | £ _____ |
| Kinvara District  | - | - | - | £ _____ |

[These Reports are to be made up and forwarded by the Medical Officers to the Board of Guardians quarterly, viz., on the 31st March, 30th June, 30th September, and 31st December.]

Reports (Form P) containing the names of Children born in the District who are over three months of age and have not been vaccinated, from the Medical Officers of the following Dispensary Districts, viz:—

---



---



---

were laid before the Board and directions given thereon, as follows:—

Next Meeting of the Guardians to be held on SATURDAY, the 12<sup>th</sup>  
 day of February 1910.

(Signed), John Gormally  
 Acting Clerk of the Union.  
 \_\_\_\_\_ Chairman.



[FORM 14.] **TABLE (1) FINANCIAL MINUTES.**

(Article 7.)

(To be kept by the Clerk, who is to forward a copy to the Local Government Board along with but separate from, the general Minutes of each Finance meeting.)

**Gort Union.**

Finance Meeting, held the \_\_\_\_\_ day of \_\_\_\_\_ 19 \_\_\_\_\_

The Financial Statement Book of Receipts was produced and authenticated by the signature of the Chairman and the counter-signature of the Clerk, showing the sums which had been received during the month of \_\_\_\_\_ 19 \_\_\_\_\_, and the Ledger entries made in respect of same, as follows:—

| TABLE (a)  | DR. |    |    |
|--|-----|----|----|
|  | £   | s. | d. |
| County Council, Money supplied on demand of Guardians ... .. |     |    |    |
| Repayment of Relief ... ..                                   |     |    |    |
| Rents of Dispensary Residences ... ..                        |     |    |    |
| Farm Account—Sales of Farm Produce ... ..                    |     |    |    |
| Sales of Offal, old stores, and other Receipts ... ..        |     |    |    |
| Loans received ... ..  |     |    |    |
| Total amount of Lodgments as above ... ..                    |     |    |    |

The Financial Statement Book of Expenditure was produced and authenticated by the signature of the Chairman and the counter-signature of the Clerk, showing the sums which had been ordered for payment in the month of \_\_\_\_\_ 19 \_\_\_\_\_ and the Ledger entries made in respect of same.

Payments were ordered to be made for accounts as follows, and the authority for the amount thereof was signed for transmission to the Treasurer.

| TABLE (b)  | DR. |    |    |
|--|-----|----|----|
|  | £   | s. | d. |
| Sundry Accounts, viz. :—   |     |    |    |
| Provisions and Necessaries ... ..  |     |    |    |
| Clothing and Bedding ... ..  |     |    |    |
| Establishment—   |     |    |    |
| (a) Salaries ... ..  |     |    |    |
| (b) Medicines and Medical and Surgical Appliances ... ..                 |     |    |    |
| (c) Farm ... ..  |     |    |    |
| (d) Other Expenses ... ..  |     |    |    |
| Workhouse Burials ... ..   |     |    |    |
| District School Account ... ..   |     |    |    |
| District Hospital Account ... ..   |     |    |    |
| Maintenance in Extern Institutions ... ..                                |     |    |    |
| Emigration Law and other Expenses ... ..                                 |     |    |    |
| Medical Charities ... ..   |     |    |    |
| Lunacy Fees to Medical Officers ... ..                                   |     |    |    |
| Registration of Births, Deaths and Marriages, and of Vaccinations ... .. |     |    |    |
| Superannuation Allowances ... ..   |     |    |    |
| Assessment and Results' Fees of Teachers ... ..                          |     |    |    |
| Expenses of Local Committees ... ..                                      |     |    |    |
| Repayment of Loans ... ..  |     |    |    |
| Relieving Officers' Accounts—Out-door Relief ... ..                      |     |    |    |
| Repayment of Advances under Seed Supply Acts ... ..                      |     |    |    |
| Unpaid Bills of last half-year ... ..                                    |     |    |    |
| Expenditure out of Loans ... ..  |     |    |    |
| Total Amount of Payments ordered as above ... ..                         |     |    |    |

[FORM 14]  
(Article 7)

### TABLE (2) STATISTICAL MINUTES.

(To be kept by the Clerk, who is to forward a copy to the Local Government Board along with, separate from, the General Minutes of each Meeting.)

#### Gort Union.

Meeting held the 12<sup>th</sup> day of February 19 10.

The following Relief Registers were produced, examined, and authenticated by the signature of the Chairman and counter-signature of the Clerk.

Indoor from No. 1930 to No. 2000  
Separate „ No. \_\_\_\_\_ to No. \_\_\_\_\_  
Outdoor „ No. \_\_\_\_\_ to No. \_\_\_\_\_

The Ledger was produced by the Clerk, posted up to date, with the proper Debits and Credits.

The following Books were submitted by the Clerk, he having first ascertained the accuracy of the entries made therein by the Master of the Workhouse, and authenticated the same by his signature:—

1. The Indoor Relief List.
2. The Provision Check Account.
3. The Provision Receipt and Consumption Account.

The Weekly Abstract of the Account of Provisions and Necessaries for the Week ending Saturday, the 5<sup>th</sup> day of February 19 10, was submitted, of which the following is a Summary:—

|             | Stock in hand at close of preceding week |    |    | Received during the week |    |    | Total |    |    | Consumed during the week |             |       | Stock in hand at close of this week |    |    | Collective No. of Days |    |   |       |
|-------------|--|----|----|--------------------------|----|----|-------|----|----|--------------------------|-------------|-------|-------------------------------------|----|----|------------------------|----|---|-------|
|             | £  | s. | d. | £                        | s. | d. | £     | s. | d. | By Inmates               | By Officers | Total | £                                   | s. | d. |                        |    |   |       |
| Provisions  | 38                                       | 8  |    | 24                       | 11 | 6  | 62    | 19 | 6  |                          |             |       | 26                                  | 11 | 3  | 36                     | 8  | 3 | } 944 |
| Necessaries | 39                                       | 12 | 10 |                          |    |    | 39    | 12 | 10 |                          |             |       | 5                                   | 8  |    | 34                     | 12 | 2 |       |
| Total       | 78                                       | 0  | 10 | 24                       | 11 | 6  | 102   | 12 | 4  |                          |             |       | 31                                  | 11 | 11 | 71                     | 0  | 5 |       |

The General Average Cost of an Inmate for the week was ... .. : £ 4 : 5  
Average Cost in Infirmary ... .. : 5 : 6 3/4  
Average Cost in Fever Hospital ... .. : .. :

The following Books were also produced by the Clerk, their accuracy having been previously ascertained by him and authenticated by his signature—

1. The Clothing Materials Receipt and Conversion Book.
2. The Clothing Receipt Book.
3. The Inventory Book.
4. The Labour Book.
5. The Workhouse Farm Account.
6. The Medical Weekly Return and Extra Book.
7. The Outdoor Admission and Discharge Book.
8. The Indoor Admission and Discharge Book.

The Out-door Relief Lists, Application and Report Books, Order Check Books for Out-door Relief in kind, and Receipts and Expenditure Books of the several Relieving Officers were then produced by the Clerk, their accuracy having been previously ascertained by him and authenticated by his signature.

The Clerk's Report on the execution of Orders previously made by the Board was read to the following effect :-

The Master's Estimate of Provisions and Necessaries required for the ensuing week was examined, and Orders were duly made for the several articles specified, namely :-

944 lbs. W. Bread  
 63 .. Bannan "  
 70 .. Meat  
 60 gals Milk  
 300 Eggs  
 40 lbs Butter  
 4 .. Tobacco  
 200 st. Potatoes.

Galway County Council Archives



The Master further reported that he had previously served on Anne Howard for insubordination, and breaking down of a wooden partition and 30 panes of glass. She was sentenced to a months imprisonment for insubordination and the case for destruction of property adjourned.

James Griffin applied for a sum of 30<sup>s</sup> for putting in glass maliciously broken by Anne Howard.

Ordered — Pay Griffin 10<sup>s</sup> for this work.

The Master reported that an inmate named Stephen Forde died in the lavatory on the 4<sup>th</sup> inst. The coroner was communicated with but did not consider an inquest necessary.  
"Read"

Consideration of remaining business was adjourned to next meeting.

Galway County Council Archives

**Gort Union.****BOARDED OUT CHILDREN, &c.**

MINUTES of Proceedings of the Board of Guardians of Gort Union, at their Meeting on

SATURDAY, the 12<sup>th</sup> day of February 1910.

R. O'Leach reported that the hired out girl Bridget  
Foynes left her situation, and came to reside  
with her friends in Gort.

Ordered—

The Guardians are aware that this  
girl is now able to take care of herself.

clothing not to exceed <sup>s</sup>10/- was allowed for  
a child at nurse with Mrs Farrell, Boland's Lane Gort.

caution is given parents to send the children  
more regularly to school, if not, they will be  
brought back to Workhouse.

(Signed) John Formally  
Acting Clerk of the Union.

[This to be entered on the occasion of every appointment of a new Committee, after the triennial Election of Guardians and on the occasion of any election to fill any vacancies in a Dispensary Committee.]

The following persons were appointed as Wardens for the Electoral Divisions of each Dispensary District:—The Clerk to make a Return accordingly to the Local Government Board for Ireland of the names and addresses of the Guardians, Relieving Officers and Wardens authorized to issue Medical Relief Tickets in each Dispensary District, and to issue the prescribed Notification to the Wardens appointed, and to the Medical Officers of the respective Dispensary Districts, in pursuance of Articles 1, 2 and 3 of the General Regulations for Dispensary Districts.—The Clerk was also directed to supply Check Books of Medical Relief Tickets (Forms E 1, E 2 and E 3), in pursuance of Article 31 of the Dispensary Regulations, to each Guardian of the Union, and to each Relieving Officer and Warden therein, namely:—

| Name of Dispensary District   | Electoral Divisions | Names and Addresses of Wardens appointed for each Electoral Division |
|---|---------------------|--|
| <p style="font-size: 2em; opacity: 0.3; transform: rotate(-30deg); position: absolute; top: 50%; left: 50%; pointer-events: none;">Galway County Council Archives</p> |                     |  |

[This at the end of each half-year, in pursuance of Article 33 of the General Rules for Dispensary Districts, dated 24th February, 1899.]

An Account of the Expenses incurred for the service of each Dispensary District in the Union, for the half-year ended \_\_\_\_\_ 19 \_\_\_\_\_ having been submitted to the Board, the Clerk was directed to furnish the Medical Officer of each Dispensary District with a Statement of all the Expenses of the District which have been included in the half-year's Accounts. The following are the Total Expenses incurred for each Dispensary District for the half-year ended \_\_\_\_\_ 19 \_\_\_\_\_

|                   |       |         |
|-------------------|-------|---------|
| Ardrahan District | - - - | £ _____ |
| Gort District     | - - - | £ _____ |
| Kinvara District  | - - - | £ _____ |



Galway County Council Archives

Galway County Council Archives

[These Reports are to be made up and forwarded by the Medical Officers to the Board of Guardians quarterly, viz., on the 31st March, 30th June, 30th September, and 31st December.] Reports (Form P) containing the names of Children born in the District who are over three months of age and have not been vaccinated, from the Medical Officers of the following Dispensary Districts, viz. :-

\_\_\_\_\_  
\_\_\_\_\_  
\_\_\_\_\_  
\_\_\_\_\_

were laid before the Board and directions given thereon, as follows :-

Next Meeting of the Guardians to be held on SATURDAY, the 26<sup>th</sup> day of February 1910.

(Signed), John Formally  
Clerk of the Union.  
\_\_\_\_\_  
Chairman.



GORT UNION.

Population in 1901—14,201.

Present Net Annual Value, £ 43,526. 6. 0

STATE of the Workhouse for the Week ending Saturday, the 19th day of February 1910.

| Number of Inmates for which accommodation is provided | No. that can be accommodated in each building | Total No. in each building on the above date | Able-bodied |      | Aged and Infirm Persons, and Adult Persons, above 15 years of age, but not working |      | Boys and Girls above 9 and under 15 years of age |       | Children above 2 and under 5 years of age |                              | Infants under 2 years of age |         | Casuals  |       |                                   | RETURN OF SICK AND LUNATICS                               |  |
|---|---|--|-------------|------|--|------|--|-------|---|------------------------------|------------------------------|---------|----------|-------|-----------------------------------|---|--|
|   |   |  | Males       | Fem. | Males  | Fem. | Boys   | Girls | Children above 2 and under 5 years of age | Infants under 2 years of age | Males                        | Females | Children | TOTAL | No. in Hospital on the above date | No. of Lunatics and Idiots in Workhouse on the above date |  |
| Workhouse .. .. .                                     | 729   | 140  |             |      |  |      |  |       |   |                              |                              |         |          |       |                                   |   |  |
| Temporary Buildings ..                                | —   | —  |             |      |  |      |  |       |   |                              |                              |         |          |       |                                   |   |  |
| Additional Workhouse ..                               | —   | —  |             |      |  |      |  |       |   |                              |                              |         |          |       |                                   |   |  |
| Permanent Fever Hospital                              | 51  | —  |             |      |  |      |  |       |   |                              |                              |         |          |       |                                   |   |  |
| Fever Sheds .. .. .                                   | —   | —  |             |      |  |      |  |       |   |                              |                              |         |          |       |                                   |   |  |
| <b>TOTAL</b> .. .. .                                  | <b>780</b>                                    | <b>140</b>                                   |             |      |  |      |  |       |   |                              |                              |         |          |       |                                   |   |  |
| Remaining on previous Saturday, as per last Return    |   |  | 17          | 14   | 38   | 37   | 2  | 1     | 10  | 9                            | 7                            | 3       | 1        |       | 139                               |   |  |
| Admitted during the Week                              |   |  | 2           | 5    |  |      |  | 1     | 1   |                              |                              |         |          |       | 26                                |   |  |
| Born .. .. .  |   |  |             |      |  |      |  |       |   |                              | 1                            |         |          |       | 1                                 |   |  |
| <b>TOTAL</b>  |   |  | 19          | 19   | 38   | 37   | 2  | 2     | 11  | 9                            | 8                            | 17      | 4        | 0     | 166                               |   |  |
| Discharged during the Week                            |   |  | 4           |      | 2  |      |  |       |   |                              |                              | 16      | 3        |       | 25                                |   |  |
| Died .. .. .  |   |  |             |      | 1  |      |  |       |   |                              |                              |         |          |       | 1                                 |   |  |
| Total Discharged and Died                             |   |  | 4           |      | 3  |      |  |       |   |                              |                              | 16      | 3        |       | 26                                |   |  |
| REMAINING ON THE ABOVE DATE                           |   |  | 15          | 19   | 35   | 37   | 2  | 2     | 11  | 9                            | 8                            | 1       | 1        |       | 140                               |   |  |
|   |   |  |             |      |  |      |  |       |   |                              |                              |         |          |       |                                   | No. at corresponding period last year, 157                |  |

RETURN of Destitute Persons relieved out of the Workhouse, as by Relief Lists, for the last Week ended Saturday, the 19th day of February 1910, authenticated and laid before the Board of Guardians at this Meeting.

| Relief Districts | Destitute Persons relieved out of the Workhouse (under 10 Vic., c. 31, s. 1) |   | Destitute Persons relieved out of the Workhouse (but not comprised in sec. 1) |   | Total relieved out of the Workhouse |         | Relief Districts | Destitute Persons relieved out of the Workhouse (under 10 Vic., c. 31, s. 1) |   | Destitute Persons relieved out of the Workhouse (but not comprised in sec. 1) |   | Total relieved out of the Workhouse |         |
|------------------|--|---|---|---|-------------------------------------|---------|------------------|--|---|---|---|-------------------------------------|---------|
|                  | Number of Cases relieved   | Number of Persons, including Applicant and Family dependent on him or her | Number of Cases relieved  | Number of Persons, including Applicant and Family dependent on him or her | Cases                               | Persons |                  | Number of Cases relieved   | Number of Persons, including Applicant and Family dependent on him or her | Number of Cases relieved  | Number of Persons, including Applicant and Family dependent on him or her | Cases                               | Persons |
| No. I.           | 105  | 118   |   |   | 105                                 | 118     | Bt. forward      |  |   |   |   |                                     |         |
| No. II.          |  |   |   |   |                                     |         | No. VI.          |  |   |   |   |                                     |         |
| No. III.         |  |   |   |   |                                     |         | No. VII.         |  |   |   |   |                                     |         |
| No. IV.          |  |   |   |   |                                     |         | No. VIII.        |  |   |   |   |                                     |         |
| No. V.           |  |   |   |   |                                     |         | No. IX.          |  |   |   |   |                                     |         |
| Car. forwd.      |  |   |   |   |                                     |         | No. X.           |  |   |   |   |                                     |         |
|                  |  |   |   |   |                                     |         | TOTAL            | 105  | 118   |   |   | 105                                 | 118     |

COPY OF MINUTES of Proceedings of the Board, of Guardians, at a Meeting held on SATURDAY, the 26th day of February 1910.

PRESENT: In the Chair,—Mr. Laurence O'Donnell, afterwards Mr. Patrick Lambert.

Other Guardians:—Messrs.

- J. W. BRADY-MURRAY, J.P.
- MICHAEL FEENEY
- THOMAS LALLY
- JOHN O'DEA
- MARTIN J. BURKE
- RICHARD P. FLAHERTY
- PATRICK LAMBERT
- LAURENCE O'DONNELL
- JOHN CRILL
- FERGUS CILL
- MICHAEL LINNANE
- MICHAEL O'DONNELL
- JOHN CALLANAN
- PATRICK J. HAYES
- MICHAEL LINNANE
- MARTIN O'DONNELL
- WILLIAM CARR
- JAMES HEADD
- PATRICK LINNANE
- MCHL. O'DONOHUE, J.P.
- MARTIN COEN
- COLMANN HIGGINS
- MICHAEL NAUGHTON
- THOMAS O'NEILL
- JOHN CONNOLLY
- JAMES JOYCE
- JOHN NEWELL
- PATRICK O'SHAUGHNESSY
- THOMAS P. CORLESS
- JOHN KENNE
- PATRICK NELLY
- JOHN QUINN
- JAMES CUNNINGHAM
- MORTIMER KELLY
- PATRICK F. NILAN
- PATRICK RYAN
- EDWARD PAHY
- BARTHOLOMEW KELLY
- JAMES ROONE
- OWEN SWEENEY
- MICHAEL TANNAN

The Minutes of the last Meeting were read and signed

(6)

Galway County

Laurence O'Donnell



[FORM 14.] **TABLE (1) FINANCIAL MINUTES.**  
(Article 7.)

(To be kept by the Clerk, who is to forward a copy to the Local Government Board along with, but separate from, the general Minutes of each Finance meeting.)

**Gort Union.**

Finance Meeting, held the 12<sup>th</sup> day of Febua 1910.

The Financial Statement Book of Receipts was produced and authenticated by the signature of the Chairman and the counter-signature of the Clerk, showing the sums which had been received during the month of January 1910, and the ledger entries made in respect of same, as follows:—

| TABLE (a)  | £   | Dr.<br>s. | d. |
|--|-----|-----------|----|
| County Council, Money supplied on demand of Guardians ... .. | 569 | -         | -  |
| Repayment of Relief ... ..                                   | 7   | 11        | 7  |
| Rents of Dispensary Residences ... ..                        | 2   | 19        | 2  |
| Farm Account—Sales of Farm Produce ... ..                    | 6   | 9         | 9  |
| Sales of Offal, old stores, and other Receipts ... ..        |     |           |    |
| Loans received ... ..  |     |           |    |
| Total amount of Lodgments as above ... ..                    | 586 | "         | 6  |

The Financial Statement Book of Expenditure was produced and authenticated by the signature of the Chairman and the counter-signature of the Clerk, showing the sums which had been ordered for payment in the month of January 1910, and the Ledger entries made in respect of same.

Payments were ordered to be made for accounts as follows, and the authority for the amount thereof was signed for transmission to the Treasurer.

| TABLE (b)  | £   | Dr.<br>s. | d. |
|--|-----|-----------|----|
| Sundry Accounts, viz. :—   |     |           |    |
| Provisions and Necessaries ... ..  | 38  | 13        | 5  |
| Clothing and Bedding ... ..  | 11  | 16        | .  |
| Establishment—   |     |           |    |
| (a.) Salaries ... ..   | 1   | 10        | .  |
| (b.) Medicines and Medical and Surgical Appliances ... ..                |     |           |    |
| (c.) Farm ... ..   | 16  | 11        | 6  |
| (d.) Other Expenses ... ..   |     |           |    |
| Workhouse Burials ... ..   |     |           |    |
| District School Account ... ..   |     |           |    |
| District Hospital Account ... ..   |     |           |    |
| Maintenance in Extern Institutions ... ..                                | 1   | 12        | .  |
| Emigration Law and other Expenses ... ..                                 | 35  | 6         | 1  |
| Medical Charities ... ..   |     | 9         | .  |
| Lunacy Fees to Medical Officers ... ..                                   |     |           |    |
| Registration of Births, Deaths and Marriages, and of Vaccinations ... .. | 3   | 3         | 6  |
| Superannuation Allowances ... ..   | 3   | 8         | 11 |
| Assessment and Results' Fees of Teachers ... ..                          |     |           |    |
| Expenses of Local Committees ... ..                                      |     |           |    |
| Repayment of Loans ... ..  | 40  |           |    |
| Relieving Officers' Accounts—Out-door Relief ... ..                      |     |           |    |
| Repayment of Advances under Seed Supply Acts ... ..                      |     |           |    |
| Unpaid Bills of last half-year ... ..                                    |     |           |    |
| Expenditure out of Loans ... ..  |     |           |    |
| Total Amount of Payments ordered as above ... ..                         | 152 | 10        | 5  |

[FORM 14]  
(Article 7)

### TABLE (2) STATISTICAL MINUTES.

(To be kept by the Clerk, who is to forward a copy to the Local Government Board along with, but separate from, the General Minutes of each Meeting.)

#### Gort Union.

Meeting held the 26<sup>th</sup> day of February 1910.

The following Relief Registers were produced, examined, and authenticated by the signature of the Chairman and counter-signature of the Clerk.

Indoor from No. 2000 to No. 2060  
Separate „ No. \_\_\_\_\_ to No. \_\_\_\_\_  
Outdoor „ No. \_\_\_\_\_ to No. \_\_\_\_\_

The Ledger was produced by the Clerk, posted up to date, with the proper Debits and Credits.

The following Books were submitted by the Clerk, he having first ascertained the accuracy of the entries made therein by the Master of the Workhouse, and authenticated the same by his signature:—

1. The Indoor Relief List.
2. The Provision Check Account.
3. The Provision Receipt and Consumption Account.

The Weekly Abstract of the Account of Provisions and Necessaries for the Week ending Saturday, the 19<sup>th</sup> day of February 1910, was submitted, of which the following is a Summary:—

|             | Stock in hand at close of preceding week |    |    | Received during the week |    |    | Total |    |    | Consumed during the week |    |             |   |       |    | Stock in hand at close of this week |    |    | Collective No. of Days |    |     |
|-------------|--|----|----|--------------------------|----|----|-------|----|----|--------------------------|----|-------------|---|-------|----|-------------------------------------|----|----|------------------------|----|-----|
|             |  |    |    |                          |    |    |       |    |    | By Inmates               |    | By Officers |   | Total |    |                                     |    |    |                        |    |     |
|             | £  | s. | d. | £                        | s. | d. | £     | s. | d. | £                        | s. | d.          | £ | s.    | d. | £                                   | s. | d. |                        |    |     |
| Provisions  | 28                                       | 18 | 2  | 29                       | 18 |    | 58    | 16 | 2  |                          |    |             |   |       | 26 | 7                                   | 3  | 32 | 8                      | 11 | 966 |
| Necessaries | 29                                       | 14 | "  |                          |    |    | 29    | 14 | "  |                          |    |             |   |       | 4  | 17                                  | 7  | 24 | 16                     | 5  |     |
| Total       | 57                                       | 12 | 2  | 29                       | 18 | "  | 88    | 10 | 2  |                          |    |             |   |       | 31 | 4                                   | 10 | 57 | 5                      | 4  |     |

The General Average Cost of an Inmate for the week was ... .. : £ 4 : s. d.  
Average Cost in Infirmary ... .. : 5 : "  
Average Cost in Fever Hospital ... .. : — : "

The following Books were also produced by the Clerk, their accuracy having been previously ascertained by him and authenticated by his signature—

1. The Clothing Materials Receipt and Conversion Book.
2. The Clothing Receipt Book.
3. The Inventory Book.
4. The Labour Book.
5. The Workhouse Farm Account.
6. The Medical Weekly Return and Extra Book.
7. The Outdoor Admission and Discharge Book.
8. The Indoor Admission and Discharge Book.

The Out-door Relief Lists, Application and Report Books, Order Check Books for Out-door Relief in kind, and Receipts and Expenditure Books of the several Relieving Officers were then produced by the Clerk, their accuracy having been previously ascertained by him and authenticated by his signature.

The Clerk's Report on the execution of Orders previously made by the Board was read to the following effect:—

The Master's Estimate of Provisions and Necessaries required for the ensuing week was examined, and Orders were duly made for the several articles specified, namely:—

|     |     |             |
|-----|-----|-------------|
| 890 | lbs | White Bread |
| 36  | "   | Brown "     |
| 38  | "   | Beef        |
| 65  | "   | Mutton      |
| 224 | "   | Sugar       |
| 60  | "   | Butter      |
| 224 | "   | Pork        |
| 4   | "   | Tobacco     |
| 75  |     | Sals Milk   |
| 480 |     | Eggs.       |



Warden's Office  
26<sup>th</sup> Feb 1910

Gentlemen

With reference to the Auditor's report on the farm profits. I beg to offer the following remarks.

Of the ten years under review, milk was calculated at 10<sup>d</sup> per gal during the first six, on the seventh at 9<sup>d</sup>, the eighth at 9<sup>d</sup> & the two last 08 and 09 at 8<sup>d</sup>.

The loss or rather apparent loss to the farm profits as a result of the above reduced calculations amounted in the last four years to £131-18-10.

With regard to the diminution in the supply of milk I give below the figures for the past ten years. Side by side with these I give the profits that would have accrued had the milk been calculated at 10<sup>d</sup> per gal as the Auditor presumes it has been when he assumes the figures are "relatively correct".

| Year | Sales |      | Profits   |
|------|-------|------|-----------|
| 1900 | 6125  | @ 10 | 183-5-5   |
| 1901 | 5365  | " "  | 151-6-3   |
| 1902 | 4866  | " "  | 134-12-6  |
| 1903 | 6545  | " "  | 204-7-2   |
| 1904 | 6191  | " "  | 169-9-8   |
| 1905 | 6743  | " "  | 205-4-4   |
| 1906 | 6812  | " "  | 205-2-9   |
| 1907 | 8021  | " "  | 219-0-2   |
| 1908 | 7097  | " "  | 162-16-10 |
| 1909 | 6395  | " "  | 116-12-7  |

The number of cows in '04 was eight which was increased in '05 to nine, in '06 to ten, in '07 to eleven at which figure they now stand.

10

the Master reported that the Vandriver (an inmate) who was sent to Ardahan, on the 25<sup>th</sup> inst, returned under the influence of drink ————— cautioned —————.

Ordered — charge John Doyle, at the rate of 1/- per day, for his maintenance while in Hospital, and again apply to John Madden of Keelderry for the amount due by him for maintenance.

Ordered — Procure a new Weighing scale for Workhouse kitchen.

Read letter from Local Govt. Board dated 22<sup>nd</sup> inst, forwarding copy of the Auditor's Report, on his audit of the Union Accounts for Half year ended 30<sup>th</sup> Sept. last.

The Auditor called attention to the Farm Account which he states has not been attended to with results as favourable as hitherto. The profits show a considerable falling off, while the yield of milk has diminished. He considers the serious shrinkage in this Account warrants investigation. All sums for re. payment of relief &c. received by the Master should be lodged promptly with the Treasurer, in future.

The Master submitted an explanation to the Board in reply to the Auditor's comment, which was considered satisfactory, and a copy of same was directed to be forwarded to the Local Govt. Board.

Galway County Council Archives

The cases of provisional relief, and applications for relief, were considered and decided on as set forth in the Application and Report Books.

The number of provisional admissions to the Workhouse confirmed was ...

Ditto disallowed ... ..

The number of Applicants admitted to the Workhouse was ... ..

The number of cases of provisional Out-door Relief was ... ..

Do in which relief was continued by the Guardians ... ..

The number of other Applicants in the Relieving Officers' Books relieved by order of the Guardians was ... ..

The number of Applicants for whom relief was not ordered was ... ..

The Bonds and other securities in force were laid before the Guardians by the Clerk, together with his Report thereon as follows: (this on the second Meeting after the Annual Election in every year).

(See also Minutes of the Guardians' proceedings under the Medical Charities Acts.)

Next Meeting of the Guardians to be held on SATURDAY, the 12<sup>th</sup> day of March 1910

(Signed) [Signature]  
Clerk of the Union.



**Gort Union.****Medical Charities Act (14 & 15 Vic., cap. 68), Vaccination Acts, and  
Dispensary Houses Acts.**

MINUTES of Proceedings of the Board of Guardians, under the above-mentioned Acts, at a  
Meeting held on SATURDAY, the 26<sup>th</sup> day of February 1910.

PRESENT—In the Chair,—

Other Guardians :—

*Sec. Guardians Present 20/10 154*

*suppliances*  
An Estimate of Medicines, &c., required by the Medical Officer of the Adahan  
Dispensary District, was laid before the Board, and directions were given thereon, as follows :—

*"Ordered"*

An Invoice of Medicines forwarded by the Contractor, for the \_\_\_\_\_  
Dispensary District, in pursuance of an Order of the Board in their Minutes of \_\_\_\_\_  
having been received from him, the Clerk laid the Invoice before the Board, and was directed to forward  
the same (or reported that he had forwarded the same, as the case may be), to the Medical Officer of the  
District, retaining a copy of the Invoice for the use of the Guardians.

On application of the Medical Officer of the \_\_\_\_\_ Dispensary District the  
following supplies of Books, Stationery, Forms, or other requisites were ordered to be supplied :—

The following Orders of the Local Government Board for Ireland, under the Medical ( )  
were laid before the Board, and directions given thereon as follows:—

Order dated \_\_\_\_\_ (state subject.)

Dr. Foley, Medical Officer of the Ardrahan Dispensary District, reported that the Dispensary Residence at Ardrahan, suffered very much during the recent storm, a good many slates being stripped off the roof, a ceiling having come down, as well as the glass in several windows being cracked and broken.

Ordered —

Adjourned for attendance of local Guardians to next meeting.

Galway County Council

Galway County Council Archives



GORT UNION.

17.

Population in 1901—14,201.

Present Net Annual Value, £ 43,525

STATE of the Workhouse for the Week ending Saturday, the 5<sup>th</sup> day of March 19

| Number of Inmates for which accommodation is provided | No. that can be accommodated in each building | Total No. in each building on the above date | Able-bodied |      | Aged and Infirm Persons, and Adult Persons, above 15 years of age, but not working |      | Boys and Girls above 9 and under 15 years of age |       | Children above 5 and under 9 years of age | Children above 2 and under 5 years of age | Infants under 2 years of age | Casuals |         |          | TOTAL | RETURN OF: SICK AND LUNATICS             |   |
|---|---|--|-------------|------|--|------|--|-------|---|---|------------------------------|---------|---------|----------|-------|--|---|
|   |   |  | Males       | Fem. | Males  | Fem. | Boys   | Girls |   |   |                              | Males   | Females | Children |       | Number in Hospital on the above date     | No. of Lunatics and Idiots in Workhouse on the above date |
| Workhouse .. .. .                                     | 729   | 150  |             |      |  |      |  |       |   |   |                              |         |         |          |       |  |   |
| Temporary Buildings ..                                | —   | —  |             |      |  |      |  |       |   |   |                              |         |         |          |       |  |   |
| Additional Workhouse ..                               | —   | —  |             |      |  |      |  |       |   |   |                              |         |         |          |       |  |   |
| Permanent Fever Hospital                              | 51  | —  |             |      |  |      |  |       |   |   |                              |         |         |          |       |  |   |
| Fever Sheds .. .. .                                   | —   | —  |             |      |  |      |  |       |   |   |                              |         |         |          |       |  |   |
| <b>TOTAL .. .. .</b>                                  | <b>780</b>                                    | <b>150</b>                                   |             |      |  |      |  |       |   |   |                              |         |         |          |       |  |   |
| Remaining on previous Saturday, as per last Return    |   |  | 19          | 22   | 35   | 37   | 2  | 2     | 11  | 9   | 8                            | 6       |         |          | 151   |  |   |
| Admitted during the Week                              |   |  | 2           | 1    | 2  |      |  |       |   |   |                              |         | 19      | 5        | 29    |  |   |
| Born .. .. .  |   |  |             |      |  |      |  |       |   |   |                              |         |         |          |       |  |   |
| <b>TOTAL,</b>   |   |  | 21          | 23   | 37   | 37   | 2  | 2     | 11  | 9   | 8                            | 25      | 5       |          | 180   |  |   |
| Discharged during the Week                            |   |  | 6           | 1    |  |      |  |       |   |   |                              | 20      | 3       |          | 30    |  |   |
| Died .. .. .  |   |  |             |      |  |      |  |       |   |   |                              |         |         |          |       |  |   |
| Total Discharged and Died                             |   |  | 6           | 1    |  |      |  |       |   |   |                              | 20      | 3       |          | 30    |  |   |
| REMAINING ON THE ABOVE DATE                           |   |  | 15          | 22   | 37   | 37   | 2  | 2     | 11  | 9   | 8                            | 5       | 2       |          | 150   | No. at corresponding period last year, ) | 159.  |

RETURN of DESTITUTE PERSONS relieved out of the Workhouse, as by Relief Lists, for the last Week ended Saturday, the 5<sup>th</sup> day of March 1910, authenticated and laid before the Board of Guardians at this Meeting.

| Relief Districts | Destitute Persons relieved out of the Workhouse (under 10 Vic., c. 31, s. 1) |   | Destitute Persons relieved out of the Workhouse (but not comprised in sec. 1) |   | Total relieved out of the Workhouse |         | Relief Districts | Destitute Persons relieved out of the Workhouse (under 10 Vic., c. 31, s. 1) |   | Destitute Persons relieved out of the Workhouse (but not comprised in sec. 1) |   | Total relieved out of the Workhouse |         |
|------------------|--|---|---|---|-------------------------------------|---------|------------------|--|---|---|---|-------------------------------------|---------|
|                  | Number of Cases relieved   | Number of Persons, including Applicant and Family dependent on him or her | Number of Cases relieved  | Number of Persons, including Applicant and Family dependent on him or her | Cases                               | Persons |                  | Number of Cases relieved   | Number of Persons, including Applicant and Family dependent on him or her | Number of Cases relieved  | Number of Persons, including Applicant and Family dependent on him or her | Cases                               | Persons |
| No. I.           | 105  | 118   |   |   | 105                                 | 118     | Bt. forward      |  |   |   |   |                                     |         |
| No. II.          |  |   |   |   |                                     |         | No. VI.          |  |   |   |   |                                     |         |
| No. III.         |  |   |   |   |                                     |         | No. VII.         |  |   |   |   |                                     |         |
| No. IV.          |  |   |   |   |                                     |         | No. VIII.        |  |   |   |   |                                     |         |
| No. V.           |  |   |   |   |                                     |         | No. IX.          |  |   |   |   |                                     |         |
| Car. forwd.      |  |   |   |   |                                     |         | No. X.           |  |   |   |   |                                     |         |
|                  |  |   |   |   |                                     |         | TOTAL ..         | 105  | 118   |   |   | 105                                 | 118     |

COPY OF MINUTES of Proceedings of the Board of Guardians, at a Meeting held on SATURDAY, the 12<sup>th</sup> day of March 1910.

PRESENT: In the Chair,—Mr. Patrick Lambert

Other Guardians:—Messrs.

- J. W. BRADY-MURRAY, J.P.
- MARTIN J. BURKE
- JOHN CAHILL
- JOHN CALLANAN
- WILLIAM CARR
- MARTIN COEN
- JOHN CONNOLLY
- THOMAS P. CORLESS
- JAMES CUNNINGHAM
- EDWARD FAHY

- MICHAEL FEENEY
- RICHARD P. FLAHERTY
- FERGUS GILL
- PATRICK J. HAYES
- JAMES HEADD
- COLMANN HIGGINS
- JAMES JOYCE
- JOHN KEANE
- MORTIMER KELLY
- BARTHOLOMEW KEELY

- THOMAS LALLY
- PATRICK LAMBERT
- PATRICK LEWIS
- MICHAEL LINNANE
- PATRICK LINNANE
- MICHAEL NAUGHTON
- JOHN NEWELL
- PATRICK NELLY
- PATRICK F. NILAN
- JAMES NOONE

- JOHN O'DEA
- LAURENCE O'DONNELL
- MICHAEL O'DONNELL
- MARTIN O'DONNELL
- MICHAEL O'DONOHUE, J.P.
- THOMAS O'NEILL
- PATRICK O'SHAUGHNESSY
- JOHN QUINN
- PATRICK RYAN
- OWEN SWEENEY
- MICHAEL TANNIAN

and Michael O'Donohue

The Minutes of the last Meeting were read and signed

Summary and Reconciliation of Treasurer's Account for the month ending ...

19\_\_

|   | Ordinary Account |    |    | Loans Account |    |    |
|---|------------------|----|----|---------------|----|----|
|   | £                | s. | d. | £             | s. | d. |
| <b>SUMMARY.</b>   |                  |    |    |               |    |    |
| Balance (if any) due by Treasurer as per last monthly statement ... ..    |                  |    |    |               |    |    |
| Total sums received during the month ... ..                               |                  |    |    |               |    |    |
| Total ... ..  |                  |    |    |               |    |    |
| Balance (if any) due to Treasurer as per last monthly statement ... ..    |                  |    |    |               |    |    |
| Payments ordered during the month ... ..                                  |                  |    |    |               |    |    |
| Total ... ..  |                  |    |    |               |    |    |
| Net Balance due _____ the Union (being difference of above Totals) ... .. |                  |    |    |               |    |    |
| <b>RECONCILEMENT.</b>   |                  |    |    |               |    |    |
| Balance per Bank Book due _____ Treasurer ... ..                          |                  |    |    |               |    |    |
| Outstanding Orders ... ..   |                  |    |    |               |    |    |
| Net Balance as above due _____ the Union ... ..                           |                  |    |    |               |    |    |

Dated this \_\_\_\_\_ day of \_\_\_\_\_ 19\_\_

\_\_\_\_\_  
Clerk of the Union.

Galway County Council Archives



The Abstract of the Accounts of the several Relieving Officers for the last Week ended the 12<sup>th</sup> day of March 1910, was submitted as follows:—

|  | Relieving Officer GORMALLY |    |    | Relieving Officer LEECH |    |    | Relieving Officer |    |    | Relieving Officer |    |    | Relieving Officer |    |    | TOTAL            |    |    |         |  |
|--|----------------------------|----|----|-------------------------|----|----|-------------------|----|----|-------------------|----|----|-------------------|----|----|------------------|----|----|---------|--|
|  | District No. I.            |    |    | District No. II.        |    |    | District No. III. |    |    | District No. IV.  |    |    | District No. V.   |    |    | District No. VI. |    |    | £ s. d. |  |
|  | £                          | s. | d. | £                       | s. | d. | £                 | s. | d. | £                 | s. | d. | £                 | s. | d. | £                | s. | d. |         |  |
| 1. Balance in hand at close of previous week ...   | 1                          | 9  | 10 | 2                       | 1  | 2  | 4                 |    |    |                   |    |    |                   |    |    | 2                | 2  | 2  |         |  |
| 2. Money since advanced by Guardians ...   | 2                          | 0  |    |                         |    |    |                   |    |    |                   |    |    |                   |    |    | 2                | 0  |    |         |  |
| 3. Total to be accounted for ...   | 2                          | 1  | 9  | 2                       | 1  | 2  | 4                 |    |    |                   |    |    |                   |    |    | 4                | 2  | 1  |         |  |
| EXPENDITURE.   |                            |    |    |                         |    |    |                   |    |    |                   |    |    |                   |    |    |                  |    |    |         |  |
| 4. Out-door Relief ordered by the Board—   |                            |    |    |                         |    |    |                   |    |    |                   |    |    |                   |    |    |                  |    |    |         |  |
| In Money ..  | 6                          | 15 | 6  | 3                       | 14 | 6  |                   |    |    |                   |    |    |                   |    |    | 10               | 10 |    |         |  |
| In Kind ...  |                            |    |    |                         |    |    |                   |    |    |                   |    |    |                   |    |    |                  |    |    |         |  |
| 5. Provisional Relief (in kind only), given by Relieving Officer on his own Responsibility |                            |    | 5  | 2                       |    |    |                   |    |    |                   |    |    |                   |    |    |                  |    | 15 |         |  |
| 6. Orphans and Deserted Children boarded out ...   |                            |    | 1  | 2                       |    |    | 8                 | 9  |    |                   |    |    |                   |    |    |                  |    | 1  |         |  |
| 7. Total Relief given  | 8                          | 2  | 8  | 4                       | 3  | 3  |                   |    |    |                   |    |    |                   |    |    |                  |    | 12 |         |  |
| 8. Balance in hands at close of the week ...   | 1                          | 3  | 7  | 2                       | 1  | 6  | 1                 | 9  |    |                   |    |    |                   |    |    |                  |    | 3  |         |  |
| 9. TOTAL   | 2                          | 1  | 9  | 2                       | 1  | 2  | 4                 |    |    |                   |    |    |                   |    |    |                  |    | 4  |         |  |

NOTE.—Should any of the above-mentioned books not be duly authenticated and submitted at the meeting, the names thereof should be struck out in red ink, and the cause of the omission explained on the Minutes.

Dated this 12<sup>th</sup> day of March 1910.

[Signature]  
Clerk of Union.



The following Letters from the Local Government Board and others were read by the Clerk, and Orders were made on them respectively, as follows:—

Resolved:— That Mr. John. E. Hayell be appointed to take stock on the 31<sup>st</sup> March next, at usual remuneration, viz:— £ 5=.

D. O. Gormally was allowed two or three days leave of absence.

Ordered— That 5/- be accepted from John. Doyle for maintenance and treatment in Hospital, as he is unable to pay more.

Galway County Council Archives

Galway County Council Archives

The cases of provisional relief, and applications for relief, were considered and decided on as set forth in the Application and Report Books.

The number of provisional admissions to the Workhouse confirmed was ...

Ditto disallowed ... ..

The number of Applicants admitted to the Workhouse was ... ..

The number of cases of provisional Out-door Relief was ... ..

Do in which relief was continued by the Guardians ... ..

The number of other Applicants in the Relieving Officers' Books relieved by order of the Guardians was ... ..

The number of Applicants for whom relief was not ordered was ... ..

The Bonds and other securities in force were laid before the Guardians by the Clerk, together with his Report thereon as follows: (this on the second Meeting after the Annual Election in every year).

(See also Minutes of the Guardians' proceedings under the Medical Charities Acts.)

Next Meeting of the Guardians to be held on SATURDAY, the 26<sup>th</sup> day of March 19 10.

(Signed) *[Signature]*  
Clerk of the Union.