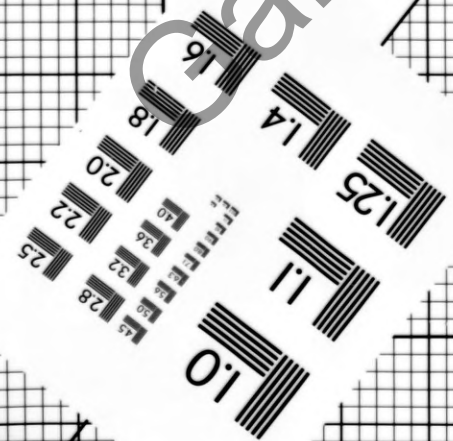
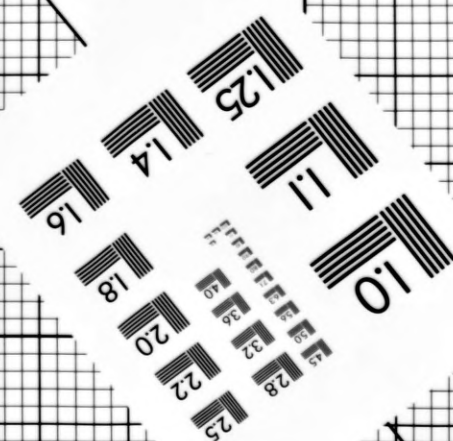
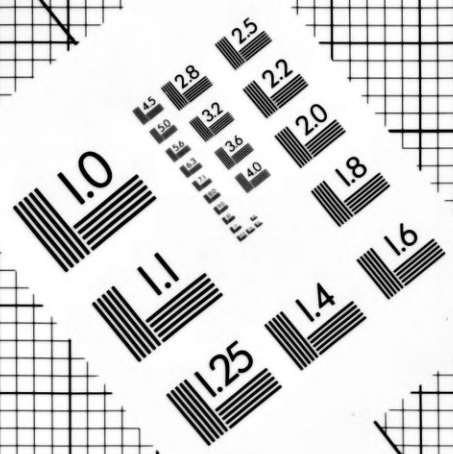
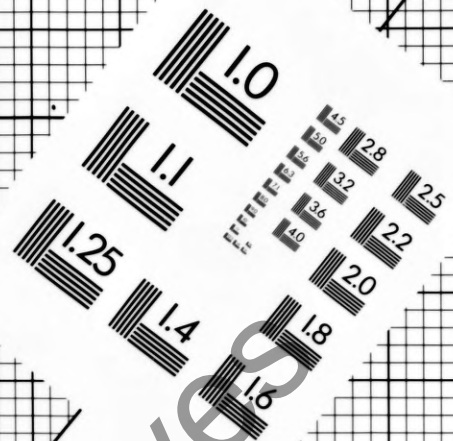
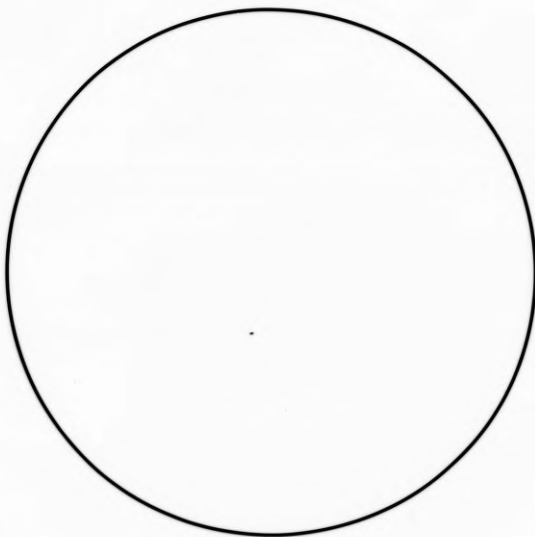


START OF ROLL

Galway Courthouse Archives

PLANETARY MICRO COPY TEST CHART (11 X 14")
PM - PMC



POINT SIZE
4 Z35lg 1yb7 Y08j Z1d6
6 Hg47j W9pa9 A7a7q Ge92
8 Su1xi 33q7n Oelvf 4ef8k

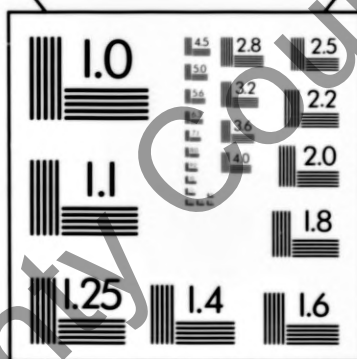
10 2xbiy Gmn0c
Y5a5o E1t9g
12 7n34a K2b8t
D6fmh 9ss9d
14 Wcuzl L1cdg
6Y3sl Okjdg

FUTURA

NEWS GOTHIC
14 K2b8t Okjdg
4ef8k Gmn0c
12 Z1o6x Ge92
7n34a 6Y3sl

10 Y0r8j A7a7q
Oelvf 2xbiy
8 9ss9d L1cdg
33q7n E1t9g
6 Z35lg Hq47j Su1xi Y5a5
4 D6fmh Wcuzl 1yb7 W9pa9

POINT SIZE



4 Jevv Avvhd O2v3p Gv3h Bv3p
CJTRD NZAUP BWSU ZLUD ZC6B
6 IZC6B USM7P PM6SB OIKOG
8 XMBBO HWEKH XYAHQ S1DD5
10 VILNU MZHSF XMBBO HWEKH
Kp7Yc Rho9t Umkh9 Eeafd
C6Jfm Zm79a 3s43l iskrY I26FRKM EB7AU FUDWM B00NF
Oz7h9B5e1P Wo8nk 8tizx I4C9E83 B18AJ Z7QYI 0KJDDG
POINT SIZE SANS SERIF (MICROFONT)

150mm

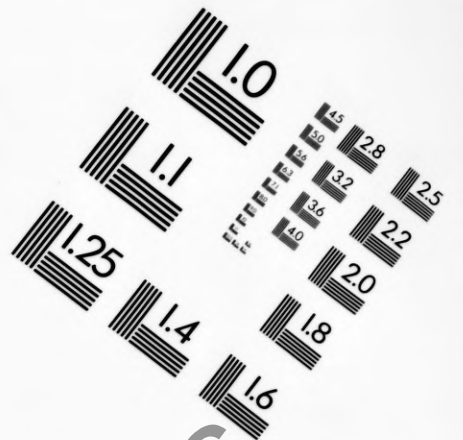
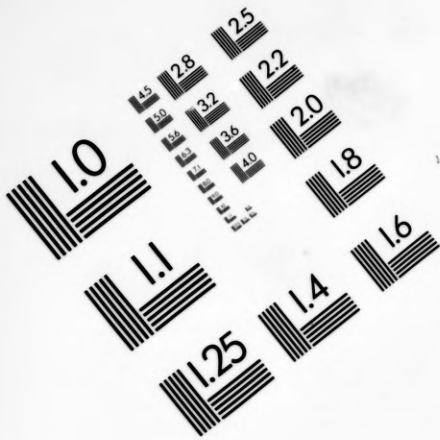
9"

PRECISIONSM RESOLUTION TARGETS

The Microfilm Shop

Tel: (024) 7638 3998

Fax: (024) 7638 2319

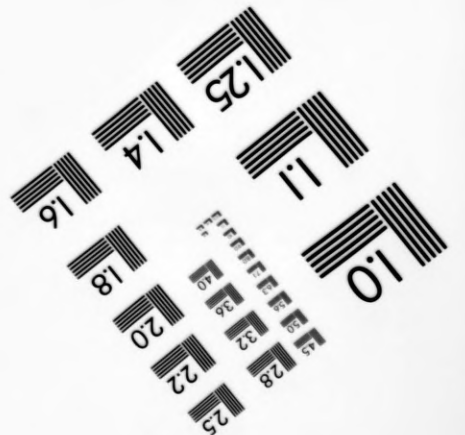
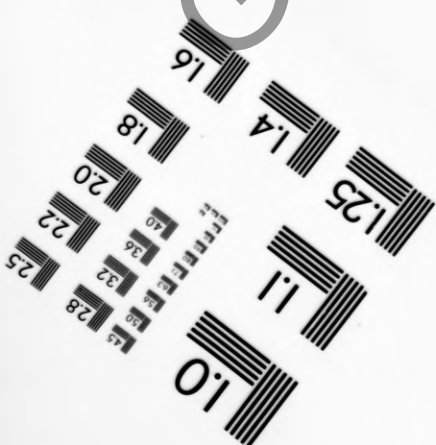
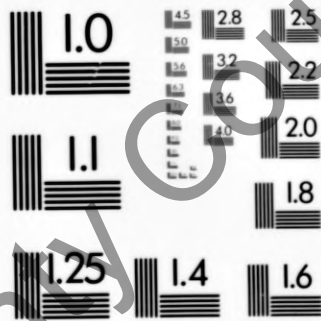


PRECISIONSM RESOLUTION TARGETS

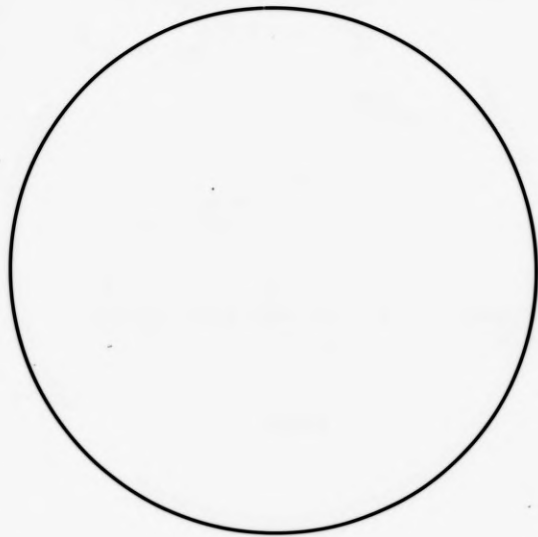
The Microfilm Shop

Tel: (024) 7638 3998

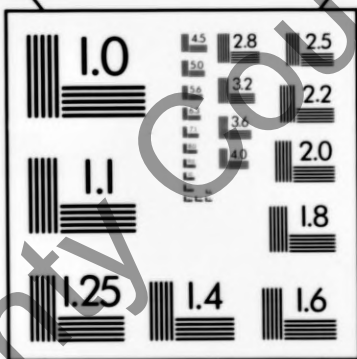
Fax: (024) 7638 2319



PM-PLN 11"x14"
PLANETARY PHOTOGRAPHIC



POINT SIZE	Sample Text
4	Z35lg 1pb7 Y0a8 Z0a6
6	Hg47j W9pa9 A7a7q Ge92
8	Su1xi 33q7n Oelvf 4ef8k
10	2xbiy Gmn0c Y5a5o E1f9g
12	7n34a K2b8t D6fmh 9ss9d
14	Wcuzl L1cdg 6Y3sl Okjdg
FUTURA	
NEWS GOTHIC	
14	K2b8t Okjdg 4ef8k Gmn0c
12	Zlo6x Ge92 7n34a 6Y3sl
10	Y0r8j A7a7q Oelvf 2xbiy
8	9ss9d L1cdg 33q7n E1f9g
6	Z35lg Hq47j Su1xi Y5a5
4	D6fmh Wcuzl 1pb7 W9pa9



SERIF (BASKERVILLE) SIZE SANS SERIF (MICROFONT)

POINT

4 C1R0 N2A0R PNC0 ZL0D ZC0R
IZC6B USM7P PNB5B 01K0G

6 8 XMBBO HWEKH XYAHQ S1D0S
VILNU MZHSF XMBBO HWEKH

10 VILNU MZHSF XMBBO HWEKH
KPT7c Rho9t Umkh9 Eeafd
C6Jfm Zm79a 3s431 iskr Y I26FRKM EB7AU FUDWM BOONF

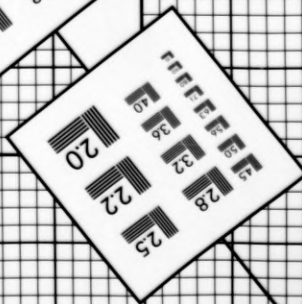
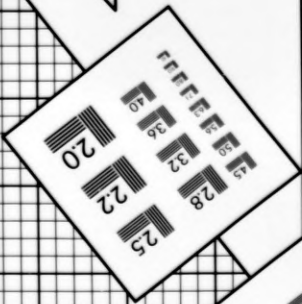
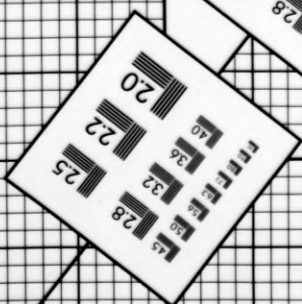
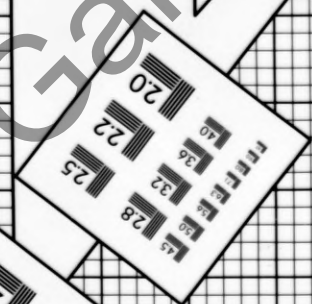
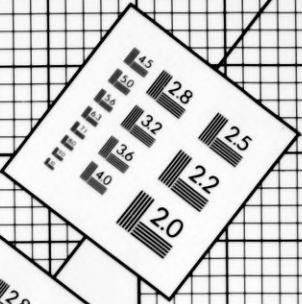
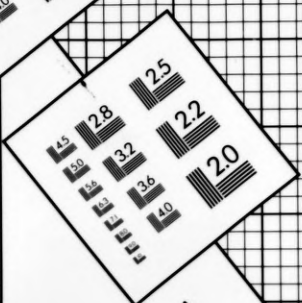
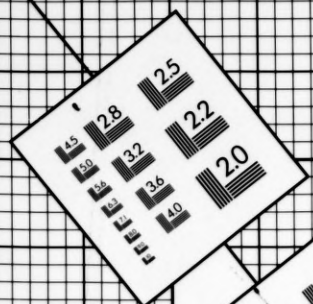
Oz7h9B5e1P Wo8nk 8t iz x I4C9E83 BI8AJ Z7QYI OKJDG

150mm

6"

PRECISIONSM RESOLUTION TARGETS

The Microfilm Shop
Telephone: (0203) 383998/381196
Fax: (0203) 382319



19 X

Galway County Council Archives

**THE
FOLLOWING
FILM HAS TIGHT
BINDINGS**

Galway County Council Archives



G01/12/

GORT POOR LAW UNION – SUMMARY LIST

**Gort Poor Law Union
Archive Collection
Summary List**

G01/12/

© Galway County Council

All Rights Reserved.

No part of this film may be reproduced or transmitted
in any form without the permission of
Galway County Council

Microfilm first produced 2008

**Board of Guardian Minutes**

G01/12/1-2	Missing
G01/12/3	8 June 1844 - 5 July 1845
G01/12/4	Missing See Rough Minutes GS01/12/109
G01/12/5	3 April 1846 – 26 March 1847
G01/12/6	2 April 1847 – 28 January 1848
G01/12/7	4 February 1848 – 1 December 1848
G01/12/8	Missing See Rough Minutes G01/12/113
G01/12/9	19 October 1849 – 30 July 1850
G01/12/10	6 August 1850 - 24 March 1851
G01/12/11	31 March 1851 - 20 October 1851
G01/12/12	Missing See Rough Minutes G01/12/117
G01/12/13	25 May 1852 – 22 November 1852
G01/12/14	November 1852 – 9 May 1853
G01/12/15	16 May 1853 – 24 October 1853
G01/12/16	31 October 1853 – 3 April 1854, CLOSED due to fragile physical condition
G01/12/17	17 April 1854 – 9 October 1854
G01/12/18	16 October 1854 – 9 April 1855
G01/12/19	16 April 1855 - 4 October 1855
G01/12/20	18 October 1855 - 27 March 1856
G01/12/21	29 March 1856 - 7 August 1856 - CLOSED due to fragile physical condition
G01/12/22	2 October 1856 – 21 March 1857
G01/12/23	2 April 1857 – 24 September 1857
G01/12/24	8 October 1857 – 1 March 1858
G01/12/25	6 April 1858 – 28 September 1858
G01/12/26	2 October 1858 – 29 March 1859
G01/12/27	5 April 1859 – 17 September 1859 - CLOSED due to fragile physical condition
G01/12/28	Missing See Rough Minutes G01/12/134
G01/12/29	27 March 1860 – 25 September 1860
G01/12/30	2 October 1860 – 24 September 1861 - CLOSED due to fragile physical condition
G01/12/31	1 October 1861 – 25 March 1862
G01/12/32	1 April 1862 – 23 September 1862



G01/12/33	30 September 1862 – 24 March 1863
G01/12/34	31 March 1863 – 22 September 1863
G01/12/35	29 September 1863 – 22 March 1864
G01/12/36	29 March 1864 – 17 September 1864
G01/12/37	Missing
G01/12/38	28 March 1865 – 19 September 1865
G01/12/39	26 September 1865 – 20 March 1866
G01/12/40	27 March 1866 – 18 September 1866
G01/12/41	25 September 1866 – 19 March 1867
G01/12/42	26 March 1867 – 17 September 1867 - Condition: Fair
G01/12/43	21 September 1867 – 14 March 1868
G01/12/44	21 March 1868 – 12 September 1868
G01/12/45	19 September 1868 – 13 March 1869
G01/12/46	28 March 1869 – 11 September 1869
G01/12/47	18 September 1869 – 26 February 1870 (with gaps)
G01/12/48	19 March 1870 – 10 September 1870
G01/12/49	17 SEPTEMBER 1870 – 11 MARCH 1871
G01/12/50	8 MARCH 1871 – 9 SEPTEMBER 1871
G01/12/51	11 November 1871 – 9 March 1872
G01/12/52	16 March 1872 – 7 September 1872
G01/12/53	14 SEPTEMBER 1872 – 8 MARCH 1873
G01/12/54	15 March 1873 – 26 July 1873
G01/12/56	14 March 1874 – 19 September 1874
G01/12/57	26 September 1874 – 3 April 1875
G01/12/58	10 April 1875 – 11 October 1875
G01/12/59	23 October 1875 – 6 May 1876
G01/12/60	Missing
G01/12/61	26 November 1876 – 2 June 1877
G01/12/62	2 June 1877 – 29 December 1877
G01/12/63	5 January 1878 – 13 July 1878
G01/12/64	20 July 1878 – 8 February 1879
G01/12/65	15 February 1879 – 6 September 1879



G01/12/66	13 September 1879 – 20 March 1880
G01/12/67	27 March 1880 – 2 October 1880
G01/12/68	9 October 1880 – 9 April 1881
G01/12/69	16 April 1881 – 22 October 1881
G01/12/70	29 October 1881 – 6 May 1882
G01/12/71	13 May 1882 – 18 November 1882 - CLOSED due to fragile physical condition
G01/12/72	25 November 1882 – 2 June 1883
G01/12/73	9 June 1883 – 8 December 1883
G01/12/74	15 December 1883 – 14 June 1884
G01/12/75	21 June 1884 – 20 December 1884 - CLOSED – due to fragile condition
G01/12/76	2 January 1885 – 4 July 1885
G01/12/77	11 July 1885 – 2 January 1886
G01/12/78	17 July 1886 – 22 January 1887
G01/12/79	5 February 1887 – 6 August 1887
G01/12/80	13 AUGUST 1887 – 3 MARCH 1888
G01/12/81	22 September 1888 – 5 October 1889
G01/12/82	19 October 1889 – 31 October 1891
G01/12/83	14 November 1891 – 9 December 1893
G01/12/84	6 January 1894 – 18 January 1896
G01/12/85	1 February 1896 – 26 February 1898
G01/12/86	12 March 1898 – 29 July 1889 - Incorporates minutes of Gort Rural District Council 15 April – 29 July 1899
G01/12/87	2 September 1899 – 15 June 1901
G01/12/88	24 August 1901 – 22 August 1903
G01/12/89	Missing
G01/12/90	28 October 1905 – 9 November 1907
G01/12/91	23 November 1907 - 7 November 1908
G01/12/92	21 November 1908 – 23 October 1909
G01/12/93	6 November 1909 – 8 October 1910 - CLOSED due to its Poor Condition
G01/12/94	22 October 1910 – 23 September 1911
G01/12/95	7 October 1911 - 21 September 1912
G01/12/96	5 October 1912 – 6 September 1913
G01/12/97	6 September 1913 - 25 July 1914



G01/12/98	8 August 1914 – 24 July 1915
G01/12/99	7 August 1915 – 14 April 1917
G01/12/100	12 May 1917 – 12 April 1919
G01/12/101	10 May 1919 – 14 May 1921
G01/12/102 – 103	Missing

Indoor Relief Register

G01/12/104 24 August 1914 - 11 August 1920 - Restricted Access

Indoor Relief List

G01/12/105 March 1917 - 30 September 1919 - FRAGILE – IN POOR CONDITION

Incoming Letter Book

G01/12/106 11 March 1912 - 25 March 1916 - RESTRICTED ACCESS IN POOR CONDITION – [OIL] STAINED

Provision Receipt and Consumption Account and Provisions Check Account

G01/12/107 29 September 1917 - 30 November 1919

**Board of Guardian Rough Minutes**

G01/12/108	14 June 1844 – 18 July 1845
G01/12/109	25 July 1845 – 17 April 1846
G01/12/110	24 April 1846 – 19 March 1847
G01/12/111	Missing
G01/12/112	18 February 1848 – 1 December 1848
G01/12/113	8 December 1848 – 21 September 1849
G01/12/114	17 October 1849 – 30 July 1850
G01/12/115	6 August 1850 – 24 March 1851
G01/12/116	31 March 1851 – 20 October 1851
G01/12/117	25 October 1851 – 18 May 1852
G01/12/118	25 May 1852 - 29 November 1852
G01/12/119	6 December 1852 - 9 May 1853
G01/12/120	16 May 1853 – 24 October 1853
G01/12/121	31 October 1853 – 10 April 1854
G01/12/122	17 April 1854 – 9 October 1854
G01/12/123	16 October 1854 – 9 April 1855
G01/12/124	16 April 1855 – 11 October 1855
G01/12/125	25 October 1855 – 27 March 1856
G01/12/126	Missing
G01/12/127	16 October 1856 – 12 March 1857
G01/12/128	7 April 1857 – 30 April 1857
G01/12/129	Missing
G01/12/130	8 October 1857 – 20 March 1858
G01/12/131	6 April 1858 – 28 September 1858 - fragile – in poor condition
G01/12/132	2 October 1858 – 29 March 1859
G01/12/133	13 April 1859 – 17 September 1859
G01/12/134	27 September 1859 – 22 November 1859



GORT POOR LAW UNION ARCHIVE COLLECTION

G01/12/

© Galway County Council

All Rights Reserved.

No part of this film may be reproduced or transmitted
in any form without the permission of
Galway County Council

Microfilm first produced 2008



Gort Poor Law Union

PROVISION RECEIPT AND CONSUMPTION ACCOUNT AND PROVISIONS CHECK ACCOUNT,

G01/12/107

29 September 1917 - 30

November 1919

for the 26th Week of the Half-year ending the 30th day of September 1914

PROVISIONS CONSUMED

NECESSARIES CONSUMED

White Bread	Fresh Meat	Of Oatmeal	Of Sweet Milk	Of Tea	Of Soft Sugar	Of Rice	Of Eggs	Of Wine	Of Whisky	Of Porter	Of Arrowroot	Of Bran	Of Oatmeal and Linseed	Of Biscuits	Of Butter	Of Lard	Of Peas	Of Beans	Of Potatoes	Of Brown Bread	Of Buns or Pastry	Of Minestra	Of Tea	Of Soap	Of Candles	Of Soap	Of Matches	Of Washing Soda	Of Ball Blue	Of Kerosine Oil
	12	1	2						5																					
14																					40		29							
93																					117	280		186						
72																					47	58		77						
29																														
13																														
12																					6									
8																														
42																														
103																														
1																														
14																														
41																														
14																														
15																														
14																														
14																														

Galway County Council Archives

MILK RECEIVED.

General Average Cost	a.	d.
Infirmary	...	
Fever Hospital		

Notes—(a) In this and following like spaces insert day of the month.
 (b) The particulars to be brought from the Weekly Summary of the Diet Book for the Sick.
 (c) This Total must correspond with the Total in the same week in the Indoor Relief List (Form 23).
 (d) This Total is to be carried each week to the Provision Receipt and Consumption Account (Form 26) a sheet of which is to be printed alternately with this Account, this Form being placed first.
 (e) An ounce of Spirits is equal to two-fifths of an Imperial glass.

29th Sep 17

ARTICLES ON HAND AND RECEIVED

ARTICLES

ARTICLES	ON HAND			RECEIVED			TOTAL		
	Quantity	Cost		Quantity	Cost		Quantity	Cost	
		£	s. d.		£	s. d.		£	s. d.

PROVISIONS.

White Bread, lbs.	225	2	2	486	4	13	711	6	13
Beef, lbs.	27	1	7	133	19	6	160	20	13
Mutton, lbs.	98	19	3	35			133	19	3
Oatmeal, lbs.	349	29	3	484	40	1	833	69	4
Sweet Milk, qts.	7			28			35		
Tea, ozs.	185	1	17	1	2	8	186	3	25
Soft Sugar, lbs.	16	2	2	26	5	1	42	7	3
Rice, lbs.	13						13		
Eggs, No.									
Wine, ozs.									
Whiskey†, ozs.									
Porter, pints									
Arrowroot, ozs.									
Brandy, †, ozs.									
Oranges and Lemons, No.									
Biscuits, lbs.									
Butter, lbs.	852	3	4	82	17		934	21	4
Flour, lbs.									
Potatoes, lbs.									
Brown Bread, lbs.									
Bacon or Pork, lbs.	477	29	12				477	29	12
Minerals, bots.									
Pepper, lbs.									
Salt, lbs.	28	1	4				28	1	4
Ox Heads, No.									
Sheep Heads, No.									
Vegetables, value									
Tobacco, ozs.	28	11	6				28	11	6
Snuff, ozs.									
Soup, pts.	72	6	3				72	6	3
Jam									
Churn									

Total Provisions

69 13 5

20 10 6

90 8

NECESSARIES.

Coals, cwts.	1450	189	8	1450	189	8	1450	189	8
Candles (Paraffin), lbs.	62	5	10				62	5	10
Soap, lbs.	167	2	17				167	2	17
Starch, lbs.									
Washing Soda, lbs.									
Ball Blue, lbs.	24	2	3				24	2	3
Paraffin Oil, gals.	6	8	1				6	8	1

Total Necessaries

193 1 9

193 1

GROSS TOTAL,

262 15 2

20 10 6

233 5

Notes: A Sheet of this Form and of the Provision Check Account (Form 25), may be printed alternately in the same book, this Form second; or the forms may be bound in separate books. * The Quantities consumed must correspond with the Total Quantities (Note (d)) shown in the Provision Check Account, and these Quantities, with the Stock in Hand, must equal the Total on hand and received.

ARTICLES CONSUMED AND REMAINING

REQUIREMENTS

ARTICLES

ARTICLES	CONSUMED			REMAINING			Quantities Wanted	Initials of Chairman authorising Articles to be Ordered	No. of Order (Form 6)
	Quantity*	Cost		Quantity	Cost				
		£	s. d.		£	s. d.			

PROVISIONS.

White Bread, lbs.	449	4	4	352	2	9	1		
Beef, lbs.	72	1	2	11					
Mutton, lbs.	12								
Oatmeal, lbs.	124	19	3						
Sweet Milk, qts.	184	6	11						
Tea, ozs.	114	1	7	48	10	4			
Soft Sugar, lbs.	39	7	4						
Rice, lbs.									
Eggs, No.									
Wine, ozs.									
Whiskey†, ozs.									
Porter, pints									
Arrowroot, ozs.									
Brandy, †, ozs.									
Oranges and Lemons, No.									
Biscuits, lbs.	35	1	4	59	2	7	6		
Butter, lbs.									
Flour, lbs.									
Potatoes, lbs.	57	1	18						
Brown Bread, lbs.									
Bacon or Pork, lbs.	33	2	0	444	27	12			
Minerals, bots.									
Pepper, lbs.									
Salt, lbs.	21	1		7			4		
Ox Heads, No.									
Sheep Heads, No.	7								
Vegetables, value									
Tobacco, ozs.	28	11	6						
Snuff, ozs.									
Soup, pts.	3	9	5						
Jam	1/2								
Churn	1/2								

Total Provisions

28 3 9

62 0 2

NECESSARIES.

Coals, cwts.	40	5	4	1460	184	8			
Candles (Paraffin), lbs.	21	7	10						
Soap, lbs.									
Starch, lbs.									
Washing Soda, lbs.									
Ball Blue, lbs.	4	2	3				4		
Paraffin Oil, gals.	5	8	1				5		

Total Necessaries,

5 19 9

187 2 0

GROSS TOTAL,

34 3 6

249 2 2

(†) Spirits, if not reduced before delivery into the Workhouse Store, should be reduced to a strength not lower than 17 under proof, and the number of ounces to be entered as received shall be 150 for each gallon of spirits at the strength to which the same shall have been so reduced.

for the 27th Week of the Half-year ending the 30th day of September 1917

HOLLAND, PRINTINGHOUSE, DUBLIN.

30th Sept 17

INMATES

Class	Description of the Classes in the Diet Table	Meals	NUMBER OF INMATES FOR EACH ON EACH DAY							TOTAL FOR THE WEEK		
			S.	M.	T.	W.	T.	F.	S.	TOTALS	Dinners of Potatoes	Supper of Bread
593	Males not working ly, including Tramps No. 1	Breakfast Dinner Supper	1 1 1							3		
23	Able-bodied working Males No. 2	Breakfast Dinner Supper										
II.	Able-bodied Females not working satisfactorily, including Tramps No. 1	Breakfast	1							1		
		Dinner										
		Supper										
III.	Able-bodied Working Females No. 2	Breakfast	4							4		
		Dinner	4							4		
		Supper	4							4		
III.	Aged and Infirm Adults of either sex, above 15 years of age No. 1	Breakfast	28							28		
		Dinner	28							28		
		Supper	28							28		
III.	Aged and Infirm Adults of either sex, above 15 years of age No. 2	Breakfast	11							11		
		Dinner	11							11		
		Supper	11							11		
IV.	Boys and Girls above 9 and under 15 years of age	Breakfast	1							1		
		Dinner	1							1		
		Supper	1							1		
V.	Children above 5 and under 9 years of age	Breakfast	3							3		
		Dinner	3							3		
		Supper	3							3		
VI.	Children above 2 and under 5 years of age	Breakfast	4							4		
		Dinner	4							4		
		Supper	4							4		
VII.	Children under 2 years	Breakfast	4							4		
		Dinner	4							4		
		Supper	4							4		
VIII.	Nursing Mothers and Infants (see Medical Weekly Return)	Breakfast										
		Dinner										
		Supper										
IX.	Hospital Attendants In Fever Hospital (b) In Workhouse Hospital (b)	Breakfast										
		Dinner										
		Supper										
	Extras to Women doing Laundry Work, or having other charges											
	Do. to Women washing for the Infirmary (Not to exceed 4 for two days)											

Sunday	Monday	Tuesday	Wednesday	Thursday	Friday	Saturday	(c) Collective Number of Days
88							88

Total Provisions and Necessaries consumed by Inmates during the Week
 Officers' Rations for the Week ...
 Total Provisions and Necessaries Consumed during the Week ...

OFFICERS' RATIONS FOR THE WEEK

COMMODITY	Master	Sims	Schoolmistress	Night Nurse	Hospital Attendants	Fever Hospital Nurse	Wardmistress	Porter	Washing	Total Quantity	Contract Price	Cost
White Bread, lbs.										488		10 4
Meat, lbs.										25 1/2		2 7
Milk, qts.										15 1/2		6 4
Tea, ozs.										3 3/4		1 0 6
Sugar, lbs.										10 1/2		1 0 6
Eggs, No.										14		9 9
Butter, lbs.												
Potatoes, lbs.												
Vegetables, value												
Bacon,												
Cuals, cwt.										1		2 9
Candles, lbs.												
Soap, lbs.												
Starch, lbs.												
Blue, lbs.												
Paraffin Oil, gals.										12	3/5	9
TOTAL, £												12 9

PROVISIONS CONSUMED

NECESSARIES CONSUMED

White Bread	Fresh Meat	Onion	Sweet Milk	Tea	Soft Sugar	Rice	Eggs	Wine	Whisky	Porter	Arrowroot	Starchy	Of Hospital and Infirmary	Butter	Potatoes	Brown Bread	Brown or Pork	Minerals	Yen	Soap	Cuals	Candles	Soap	Starch	Washing Soda	Blue	Paraffin Oil	

MILK RECEIVED.

General Average Cost	Infirmary	Fever Hospital

Notes—(a) In this and following like spaces insert day of the month.
 (b) The particulars to be brought from the Weekly Summary of the Diet Book for the Sick.
 (c) This Total must correspond with the Total in the same week in the Indoor Relief List (Form 22).
 (d) This Total is to be carried each week to the Provision Receipt and Consumption Account (Form 26) a sheet of which is to be printed alternately with this Account, this Form being placed first.
 (e) An ounce of Spirits is equal to two-fifths of an Imperial glass.

30th Sep 17

ARTICLES ON HAND AND RECEIVED

ARTICLES	ON HAND				RECEIVED				TOTAL					
	Quantity	Cost			Contractor	Invoice No.	Quantity	Cost			Quantity	Cost		
		£	s.	d.				£	s.	d.		£	s.	d.
PROVISIONS.														
White Bread, lbs.	262	2	9	11			262	2	9	11				
Beef, lbs.	"	"	"	"			"	"	"	"				
Mutton, lbs.	"	"	"	"			"	"	"	"				
Oatmeal, lbs.														
Sweet Milk, qts.														
Tea, ozs.	3356	27	19	4	Jam	64	16	16	3356	27	19	4		
Soft Sugar, lbs.	10	27	4	3			10	27	4	3				
Rice, lbs.														
Eggs, No.	48	10	4				48	10	4					
Wine, ozs.	2						2							
Whiskey† ozs.														
Porter pints														
Arrowroot, ozs.														
Brandy,† ozs.														
Oranges and Lemons, No.														
Biscuits, lbs.														
Butter, lbs.	59	2	7	6			59	2	7	6				
Flour, lbs.														
Potatoes, lbs.					Jam	10	7	6	10	7	6			
Brown Bread, lbs.														
Bacon or Pork, lbs.	444	27	12				444	27	12					
Minerals, bots.														
Pepper, lbs.														
Salt, lbs.	7			4			7			4				
Ox Heads, No.	1	1					1	1						
Sheep Heads, No.														
Vegetables, value														
Tobacco, ozs.														
Snuff, ozs.														
Soup, pts.														
Lam, lbs.	6	5					6	5						
Total Provisions		62	0	2			63	3	5					

NECESSARIES.												
ARTICLES	Quantity	Cost			Quantity	Cost			Quantity	Cost		
		£	s.	d.		£	s.	d.		£	s.	d.
Coals, cwts.	1410	184	3	8		1410	184	3	8			
Candles (Paraffin), lbs.												
Soap, lbs.	140	2	10			140	2	10				
Starch, lbs.												
Washing Soda, lbs.												
Ball Blue, lbs.	2	2		4		2	2		4			
Paraffin Oil, gals.	1					1						
Total Necessaries		187	2	0		187	2	0				
GROSS TOTAL		249	2	2		136			250	5	8	

NOTES: A Sheet of this Form and of the Provision Check Account (Form 25), may be printed alternately in the same book, this Form second.; or the forms may be bound in separate books.
 *The Quantities consumed must correspond with the Total Quantities (Note (d)) shown in the Provision Check Account, and these Quantities, with the Stock in Hand, must equal the Total on hand and received.

ARTICLES CONSUMED AND REMAINING

ARTICLES	CONSUMED				REMAINING				REQUIREMENTS		
	Quantity*	Cost			Quantity	Cost			Quantities Wanted	Initials of Chairman authorising Articles to be Ordered	No. of Order (Form 6)
		£	s.	d.		£	s.	d.			
PROVISIONS.											
White Bread, lbs.	62	2	9	11	200	1	7	6			
Beef, lbs.	11	"	"	"							
Mutton, lbs.	"	"	"	"							
Oatmeal, lbs.											
Sweet Milk, qts.											
Tea, ozs.	3356	27	19	4	3340	27	16	8			
Soft Sugar, lbs.	10	27	4	3	7	27	3				
Rice, lbs.											
Eggs, No.	48	10	4								
Wine, ozs.	2										
Whiskey† ozs.											
Porter pints											
Arrowroot, ozs.											
Brandy,† ozs.											
Oranges and Lemons, No.											
Biscuits, lbs.											
Butter, lbs.	59	2	7	6	56	2	5				
Flour, lbs.											
Potatoes, lbs.	10	7	6								
Brown Bread, lbs.											
Bacon or Pork, lbs.	444	27	12		428	26	10				
Minerals, bots.											
Pepper, lbs.											
Salt, lbs.	7			4							
Ox Heads, No.	1	1									
Sheep Heads, No.											
Vegetables, value											
Tobacco, ozs.											
Snuff, ozs.											
Soup, pts.											
Total Provisions		46	4		58	17	4				
NECESSARIES.											
Coals, cwts.	10	1	6	2	1400	182	7	6			
Candles (Paraffin), lbs.											
Soap, lbs.					140	2	10				
Starch, lbs.											
Washing Soda, lbs.											
Ball Blue, lbs.	2	2		4	2	2					
Paraffin Oil, gals.	1										
Total Necessaries		1	7	6	185	14	6				
GROSS TOTAL		5	13	10	244	11	10				

(†) Spirits, if not reduced before delivery into the Workhouse Store, should be reduced to a strength not lower than 17 under proof, and the number of ounces to be entered as received shall be 160 for each gallon of spirits at the strength to which the same shall have been so reduced.

Galway County Council Archives

Planned as per...
Phint.
 8-245-8-11
 244 11-10
 17/1
 15/1
 18.08

6th October 17

INMATES

Class No.	Description of the Classes in the Diet Table	Meals	NUMBER OF INMATES FOR EACH ON EACH DAY						TOTALS	Dinners of Potatoes	Suppers of Bread
			S.	M.	T.	W.	T.	F.			
I.	Able-bodied Males not working satisfactorily, including Tramps No. 1	Breakfast			2				5		
		Dinner									
		Supper		1	1	1	X		2	7	
II.	Able-bodied working Males No. 2	Breakfast									
		Dinner									
		Supper									
III.	Able-bodied Females not working satisfactorily, including Tramps No. 1	Breakfast									
		Dinner									
		Supper									
IV.	Able-bodied Working Females No. 2	Breakfast									
		Dinner									
		Supper									
V.	Aged and Infirm Adults of either sex, above 15 years of age No. 1	Breakfast									
		Dinner									
		Supper									
VI.	Aged and Infirm Adults of either sex, above 15 years of age No. 2	Breakfast									
		Dinner									
		Supper									
VII.	Boys and Girls above 9 and under 15 years of age	Breakfast									
		Dinner									
		Supper									
VIII.	Children above 5 and under 9 years of age	Breakfast									
		Dinner									
		Supper									
IX.	Children above 2 and under 5 years of age	Breakfast									
		Dinner									
		Supper									
X.	Children under 2 years	Breakfast									
		Dinner									
		Supper									
XI.	Nursing Mothers and Infants (see Medical Weekly Return)	Breakfast									
		Dinner									
		Supper									
XII.	Hospital Attendants In Fever Hospital (b) In Workhouse Hospital (b)	Breakfast									
		Dinner									
		Supper									
XIII.	Extras to Women doing Laundry Work, or having other charges Do. to Women washing for the Infirmary (Not to exceed 4 for two days)	Breakfast									
		Dinner									
		Supper									

Sunday	Monday	Tuesday	Wednesday	Thursday	Friday	Saturday	Collective Number of Days
	91	94	90	89	90	93	547

Total Provisions and Necessaries consumed by Inmates during the Week
 Officers' Rations for the Week
 Total Provisions and Necessaries Consumed during the Week

OFFICERS' RATIONS FOR THE WEEK

Quantity	Contract Price	Cost
White Bread, lbs.		29
Meat, lbs.		15
Milk, qts.		56
Tea, ozs.		24
Sugar, lbs.		60
Eggs, No.		24
Butter, lbs.		12
Potatoes, lbs.		24
Vegetables, value	3.3.2	4.4.0
Soap, lbs.		3
Candles, lbs.		1 1/2
Starch, lbs.		6 1/2
Blue, lbs.		8
Paraffin Oil, gals.		4 1/2
TOTAL, £		4 6 3

PROVISIONS CONSUMED

White Bread	Fresh Meat	Butter	Tea	Sugar	Eggs	Wine	Whisky	Porter	Arrack	Beer	Starch	Soap	Candles	Paraffin Oil
12	18	6	35	10 1/2	15 1/2	242	36	24	644	16 1/2	560	3 1/2	50	1 1/2
49	180	236	36	13 1/2	139	280	13	4	14	3	1 1/2	6	8	9 1/2

MILK RECEIVED.

Twenty lbs Bacon used in lieu 20 lbs Fresh meat.

General Average Cost	7	4
Infirmary	9	9 1/2
Fever Hospital	1	1

NOTES—(a) In this and following like spaces insert day of the month.
 (b) The particulars to be brought from the Weekly Summary of the Diet Book for the Sick.
 (c) This Total must correspond with the Total in the same week in the Indoor Relief List (Form 23).
 (d) This Total is to be carried each week to the Provision Receipt and Consumption Account (Form 26) a sheet of which is to be printed alternately with this Account, this Form being placed first.
 (e) An ounce of Spirits is equal to two-fifths of an Imperial glass.

13th October 17

INMATES

Table with columns for Class No., Description of the Classes in the Diet Table, Meals, and NUMBER OF INMATES FOR EACH ON EACH DAY (S, M, T, W, T, F, S). Includes rows for various classes like 'Able-bodied Males not working satisfactorily' and 'Nursing Mothers and Infants'.

Table with columns: Sunday, Monday, Tuesday, Wednesday, Thursday, Friday, Saturday, (c) Collective Number of Days. Values: 88, 92, 88, 91, 91, 92, 89, 631.

Total Provisions and Necessaries consumed by Inmates during the Week
Officers' Rations for the Week
Total Provisions and Necessaries Consumed during the Week

OFFICERS' RATIONS FOR THE WEEK

Table with columns: Description, Unit, Quantity, and Price. Lists items like White Bread, Meat, Milk, Tea, Sugar, Eggs, Butter, Potatoes, Vegetables, Soap, Starch, Blue, Paraffin Oil.

TOTAL, £ 6 9 2

PROVISIONS CONSUMED

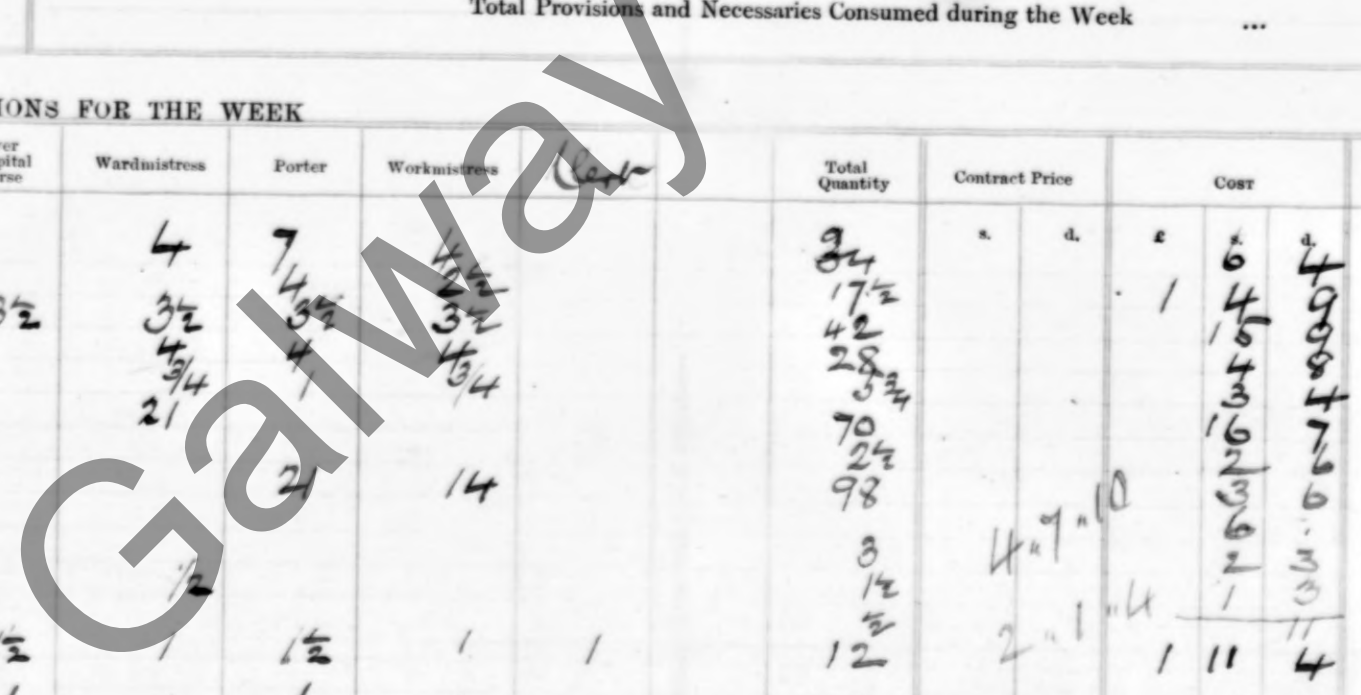
NECESSARIES CONSUMED

Large table with multiple columns for various food items (Wheat Flour, Fresh Meat, Fat, etc.) and their quantities. Includes handwritten notes and calculations.

MILK RECEIVED.

Table with columns: General Average Cost, Infirmary, Fever Hospital. Includes handwritten entries.

NOTES-(a) In this and following like spaces insert day of the month.
(b) The particulars to be brought from the Weekly Summary of the Diet Book for the Sick.
(c) This Total must correspond with the Total in the same week in the Indoor Relief List (Form 22).
(d) This Total is to be carried each week to the Provision Receipts and Consumption Account (Form 26) a sheet of which is to be printed alternately with this Account, this Form being placed first.
(e) An ounce of Spirits is equal to two-fifths of an Imperial glass.



13th October '17

ARTICLES ON HAND AND RECEIVED

ARTICLES	ON HAND			RECEIVED			TOTAL		
	Quantity	Cost		Quantity	Cost		Quantity	Cost	
		£	s. d.		£	s. d.		£	s. d.
PROVISIONS									
White Bread,	112	1	2	412	3	17 3	524	4	19 3
Beef,	29	2	-	26	1	19	100	6	19
Mutton,				45	3				
Oatmeal,	30	13	4	140	3	2	170	3	15
Sweet Milk,				484	9	1	484	9	1
Tea,	3248	27	1 4	56	1	5	3248	27	1 4
Soft Sugar,							56		
Rice,							27		
Eggs,	158	1	15	300	3	13 9	458	5	8 9
Wine,	78		12				78		12
Whiskey†	16		6 2	312	5	4	328	5	10 2
Porter									
Arrowroot,	112		7				112		7
Brandy,†									
Oranges and Lemons,									
Biscuits,									
Butter,	34	1	13 9	7		14 7	41	2	8
Flour,				78	2	18 6	78	2	18 6
Potatoes,									
Brown Bread,									
Bacon or Pork,	397 1/2	24	13 7				397 1/2	24	13 7
Minerals,									
Pepper,									
Salt,				84	5		84	5	
Ox Heads,	1		7	1	3	6	2	4	2
Sheep Heads,				2	1	14 6	51	1	2
Vegetables,									
Tobacco,	3	1	4						
Snuff,									
Soup,	4 1/2	2	9	3	2	3	3	2	3
Lam	1 1/2		2 9						
Cheese									
Total Provisions		60	14 0		37	6 4		98	0 4

NECESSARIES.

Coals,	1350	176	6 10	1350	176	6 10
Candles (Paraffin),	5		4 2	5		4 2
Soap,	119	2	2 6	119	2	2 6
Starch,						
Washing Soda,						
Ball Blue,	1 1/2		1 6	1 1/2		1 6
Paraffin Oil,				45 3/8	4	10 9
				45 3/8	4	10 9
Total Necessaries		178	15 0		4	10 9
GROSS TOTAL		239	9 0		41	17 1

Notes: A Sheet of this Form and of the Provision Check Account (Form 25), may be printed alternately in the same book, this Form second; or the forms may be bound in separate books.
 * The Quantities consumed must correspond with the Total Quantities (Note (d)) shown in the Provision Check Account, and these Quantities, with the Stock in Hand, must equal the Total on hand and received.

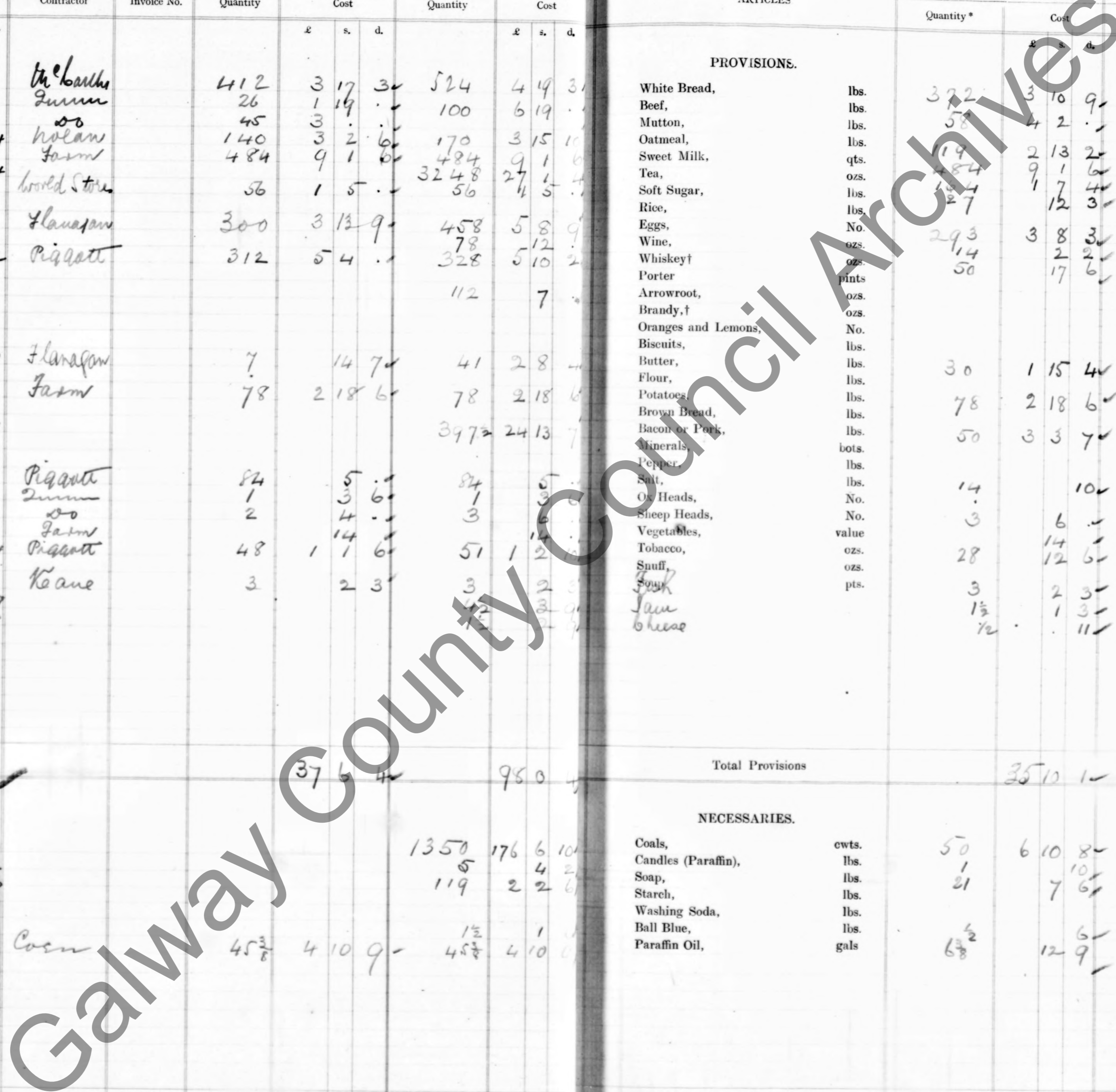
ARTICLES CONSUMED AND REMAINING

ARTICLES	CONSUMED			REMAINING			REQUIREMENTS
	Quantity*	Cost		Quantity	Cost		
		£	s. d.		£	s. d.	Quantities Wanted
PROVISIONS							
White Bread,	372	3	10 9	152	1	8 6	
Beef,	58	4	2	42	2	17	
Mutton,							
Oatmeal,	19	2	13 2	51	1	2 8	
Sweet Milk,	484	9	1 6				
Tea,	27	1	7 4				
Soft Sugar,	184	12	3	3084	25	14	
Rice,				29			
Eggs,	293	3	8 3	165	2		
Wine,	14		2	64			
Whiskey†	50		17 6	278	4	12 8	
Porter							
Arrowroot,				112			
Brandy,†							
Oranges and Lemons,							
Biscuits,							
Butter,	30	1	15 4	11		13	
Flour,							
Potatoes,	78	2	18 6				
Brown Bread,							
Bacon or Pork,	50	3	3 7	347 1/2	21	10	
Minerals,							
Pepper,							
Salt,	14		10	70		4 2	
Ox Heads,	3		6				
Sheep Heads,							
Vegetables,	28	1	14 6	23	10	4	
Tobacco,							
Snuff,	3		2 3				
Soup,	1 1/2		1 3	3		2 6	
Lam				1		1 10	
Cheese							
Total Provisions		35	10 1		62	10 3	

NECESSARIES.

Coals,	50	6	10 8	1300	169	13 2
Candles (Paraffin),	1		10	98	1	15 4
Soap,	21	7	6			
Starch,						
Washing Soda,						
Ball Blue,	1 1/2		12 9	39	3	18
Paraffin Oil,						
Total Necessaries		7	12 3		175	13 6
GROSS TOTAL		43	2 4		238	3 9

(†) Spirits, if not reduced before delivery into the Workhouse Store, should be reduced to a strength not lower than 17 under proof, and the number of ounces to be entered as received shall be 160 for each gallon of spirits at the strength to which the same shall have been so reduced.



20th October 17

INMATES

Class No.	Description of the Classes in the Diet Table	Meals	NUMBER OF INMATES FOR EACH ON EACH DAY							TOTAL FOR THE WEEK		
			S. (14)	M (15)	T. (16)	W. (17)	T. (18)	F. (19)	S. (20)	TOTALS	Dinners of Potatoes	Suppers of Bread
I.	Able-bodied Males not working satisfactorily, including Tramps No. 1	Breakfast								1		
		Dinner										
		Supper										
No. 2	Able-bodied working Males	Breakfast										
		Dinner										
		Supper										
II.	Able-bodied Females not working satisfactorily, including Tramps No. 1	Breakfast										
		Dinner										
		Supper										
No. 2	Able-bodied Working Females	Breakfast	4	4	4	4	4	4	4	32		
		Dinner	4	4	4	4	4	4	4	32	16	1
		Supper	4	4	4	4	4	4	4	32		
III.	Aged and Infirm Adults of either sex, above 15 years of age No. 1	Breakfast	29	29	29	29	30	30	30	206		
		Dinner	29	29	29	29	30	30	30	206	118	8
		Supper	29	29	29	29	30	30	30	206		
No. 2	Aged and Infirm Adults of either sex, above 15 years of age	Breakfast	11	11	11	11	11	11	11	77		
		Dinner	11	11	11	11	11	11	11	77	44	3
		Supper	11	11	11	11	11	11	11	77		
IV.	Boys and Girls above 9 and under 15 years of age	Breakfast	1	1	1	1	1	1	1	7		
		Dinner	1	1	1	1	1	1	1	7	4	
		Supper	1	1	1	1	1	1	1	7		
V.	Children above 5 and under 9 years of age	Breakfast	1	1	1	1	1	1	1	7		
		Dinner	1	1	1	1	1	1	1	7	4	
		Supper	1	1	1	1	1	1	1	7		
VI.	Children above 2 and under 5 years of age	Breakfast	1	1	1	1	1	1	1	7		
		Dinner	1	1	1	1	1	1	1	7	4	
		Supper	1	1	1	1	1	1	1	7		
VII.	Children under 2 years	Breakfast	1	1	1	1	1	1	1	7		
		Dinner	1	1	1	1	1	1	1	7	4	
		Supper	1	1	1	1	1	1	1	7		
VIII.	Nursing Mothers and Infants (see Medical Weekly Return)	Breakfast										
		Dinner										
		Supper										
IX.	Hospital Attendants In Fever Hospital (b) In Workhouse Hospital (b)	Breakfast										
		Dinner										
		Supper										
Extras to Women doing Laundry Work, or having other charges												
Do. to Women washing for the Infirmary (Not to exceed 4 for two days)												

Sunday	Monday	Tuesday	Wednesday	Thursday	Friday	Saturday	(c) Collective Number of Days
89	90	89	87	89	86	96	626

Total Provisions and Necessaries consumed by Inmates during the Week	...
Officers' Rations for the Week	...
Total Provisions and Necessaries Consumed during the Week	...

James Asst. Dist. Commr.

OFFICERS' RATIONS FOR THE WEEK										Total Quantity	Contract Price	Cost
Cook	Master	Sims	Schoolmistress	Night Nurse	Hospital Attendants	Fever Hospital Nurse	Wardmistress	Porter	Workhouse			
White Bread, lbs.										6		6
Meat, lbs.										17 1/2		17 1/2
Milk, qts.										42		42
Tea, ozs.										28		28
Sugar, lbs.										5 1/2		5 1/2
Eggs, No.										70		70
Butter, lbs.										2 1/2		2 1/2
Potatoes, lbs.										98	4.7.10	4.7.10
Vegetables, value										3 1/2		3 1/2
Bacon, lbs.										12		12
Coal, cwt.										8	2.1.4	8
Candles, lbs.										1		1
Soup, lbs.										1		1
Starch, lbs.										1		1
Blue, lbs.										1/2		1/2
Paraffin Oil, gals.										4		4
TOTAL, £ 6 9 2												

PROVISIONS CONSUMED

NECESSARIES CONSUMED

Provisions Consumed	Quantity	Value	Necessaries Consumed	Quantity	Value
Meat	17 1/2	1.10.0	Tea	28	1.0.0
Milk	42	1.0.0	Sugar	5 1/2	0.5.0
Eggs	70	1.0.0	Butter	2 1/2	0.5.0
Potatoes	98	4.7.10	Starch	1	0.1.0
Vegetables	3 1/2	0.5.0	Blue	1/2	0.1.0
Bacon	12	0.5.0	Paraffin Oil	4	0.5.0
Coal	8	2.1.4			
Candles	1	0.1.0			
Soup	1	0.1.0			
Starch	1	0.1.0			
Blue	1/2	0.1.0			
Paraffin Oil	4	0.5.0			

15 lb Calor used in the 15 lb break meat.

no

General Average Cost	7	10 1/2
Infirmary	10	9
Fever Hospital		

Notes--(a) In this and following like spaces insert day of the month.
 (b) The particulars to be brought from the Weekly Summary of the Diet Book for the Sick.
 (c) This Total must correspond with the Total in the same week in the Indoor Relief List (Form 22).
 (d) This Total is to be carried each week to the Provision Receipt and Consumption Account (Form 23) a sheet of which is to be printed alternately with this Account, this Form being placed first.
 (e) An ounce of Spirits is equal to two-fifths of an Imperial glass.

27th October '17

INMATES

Class No.	Description of the Classes in the Diet Table	Meals	NUMBER OF INMATES FOR EACH ON EACH DAY							TOTALS	Dinners of Potatoes	Suppers of Bread
			S. (21)	M (22)	T. (23)	W. (24)	T. (25)	F. (26)	S. (27)			
I.	Able-bodied Males not working satisfactorily, including Tramps No. 1	Breakfast	3		1						4	
		Dinner										
		Supper		1							3	4
No. 2	Able-bodied working Males	Breakfast										
		Dinner										
		Supper										
II.	Able-bodied Females not working satisfactorily, including Tramps	Breakfast	3		1						5	
		Dinner										
		Supper		1							1	2
No. 2	Able-bodied Working Females	Breakfast	4	4	4	4	4	4	4	4	3	
		Dinner	4	4	4	4	4	4	4	4	3	16
		Supper	4	4	4	4	4	4	4	4	3	11
III.	Aged and Infirm Adults of either sex, above 15 years of age	Breakfast	30	29	29	29	29	29	29	29	29	204
		Dinner	30	29	29	29	29	29	29	29	29	204
		Supper	30	29	29	29	29	29	29	29	29	204
No. 2	Aged and Infirm Adults of either sex, above 15 years of age	Breakfast	11	11	11	11	11	11	11	11	11	77
		Dinner	11	11	11	11	11	11	11	11	11	77
		Supper	11	11	11	11	11	11	11	11	11	77
IV.	Boys and Girls above 9 and under 15 years of age	Breakfast	1	1	1	1	1	1	1	1	1	7
		Dinner	1	1	1	1	1	1	1	1	1	7
		Supper	1	1	1	1	1	1	1	1	1	7
V.	Children above 5 and under 9 years of age	Breakfast	5	3	3	3	3	3	3	3	3	23
		Dinner	3	3	3	3	3	3	3	3	3	21
		Supper	3	3	3	3	3	3	3	3	3	21
VI.	Children above 2 and under 5 years of age	Breakfast	6	5	5	5	5	5	4	4	4	34
		Dinner	5	5	5	5	5	5	4	4	4	33
		Supper	5	5	5	5	5	5	4	4	4	33
VII.	Children under 2 years	Breakfast	4	3	3	3	3	3	3	3	3	22
		Dinner	3	3	3	3	3	3	3	3	3	21
		Supper	3	3	3	3	3	3	3	3	3	21
VIII.	Nursing Mothers and Infants (see Medical Weekly Return)	Breakfast										
		Supper										
IX.	Hospital Attendants In Fever Hospital (b)	Breakfast										
		Supper										
	Extras to Women doing Laundry Work, or having other charges	Breakfast										
	Do. to Women washing for the Infirmary (Not to exceed 4 for two days)	Breakfast										
		Supper										

Sunday	Monday	Tuesday	Wednesday	Thursday	Friday	Saturday	(a) Collective Number of Days	Total Provisions and Necessaries consumed by Inmates during the Week
86	87	85	82	83	85	87	595	199

OFFICERS' RATIONS FOR THE WEEK

Quantity	Contract Price	Cost
White Bread, lbs.		34
Meat, lbs.		17
Milk, qts.		42
Tea, ozs.		28
Sugar, lbs.		5
Eggs, No.		70
Butter, lbs.		3
Potatoes, lbs.		12
Vegetables, value		8
Soap, lbs.		1
Starch, lbs.		1
Blue, lbs.		1
Paraffin Oil, gals.		1/2

TOTAL £ 6 11 9

PROVISIONS CONSUMED

PROVISIONS CONSUMED											NECESSARIES CONSUMED									
White Bread	Fresh Meat	Meat	Milk	Tea	Sugar	Eggs	Butter	Potatoes	Vegetables	Soap	Starch	Blue	Paraffin Oil	Coke	Candles	Soap	Starch	Blue	Paraffin Oil	
2	1																			
1 1/2	1																			
2 1/2	1 1/4																			
13 1/2	5 1/2																			
10 2	4 3/2																			
29	12 1/2																			
1 1/2	1 1/2																			
8 1/2	4 1/2																			
12 1/2	5																			
10 1/2	15 1/2					7														
25 1/2	5 1/4					8	210	28	21	8										
4	1 1/2					3														
21	63	9																		
34	17 1/2																			
12	68 1/4	130	439	155	26 1/2	287	28	21	8											

MILK RECEIVED.

10 1/4 lbs Bacon used in lieu 10 1/4 lbs fresh meat

dmp

General Average Cost s. d.
Infirmary ...
Fever Hospital ...

Galway County Council Archives

Notes—(a) In this and following like spaces insert day of the month.
(b) The particulars to be brought from the Weekly Summary of the Diet Book for the Sick.
(c) This Total must correspond with the Total in the same week in the Indoor Relief List (Form 22).
(d) This Total is to be carried each week to the Provision Receipt and Consumption Account (Form 26) a sheet of which is to be printed alternately with this Account, this Form being placed first.
(e) An ounce of Spirits is equal to two-fifths of an Imperial gill.

27th Oct 17

ARTICLES ON HAND AND RECEIVED

ARTICLES	ON HAND			RECEIVED			TOTAL		
	Quantity	Cost	Contractor	Invoice No.	Quantity	Cost	Quantity	Cost	
PROVISIONS.									
White Bread,	lbs.	100	18 9	McLarty	556	5 4 3	656	6 3	
Beef,	lbs.	43	2 18	Farm	19	1 8	108	7 7 10	
Mutton,	lbs.				46	3 1			
Oatmeal,	lbs.	79	1 15 2	Farm			79	1 15 2	
Sweet Milk,	qts.				436	8 3 6	436	8 3 6	
Tea,	ozs.	2922	24 7	Nolan	112	3 2 6	2922	24 7	
Soft Sugar,	lbs.	7					119	3 6 7	
Rice,	lbs.								
Eggs,	No.	181	2 15	Flanagan	240	3 5	421	6	
Wine,	ozs.	40	6 4				40	6 4	
Whiskey†	ozs.	268	4 9				268	4 9 4	
Porter	pints								
Arrowroot,	ozs.	90	5 8				90	5 8	
Brandy,†	ozs.								
Oranges and Lemons,	No.								
Biscuits,	lbs.								
Butter,	lbs.	88	4 14 4	Flanagan	10	1 8 2	101	6 2 6	
Flour,	lbs.			Farm	51	1 18 3	51	1 18 3	
Potatoes,	lbs.								
Brown Bread,	lbs.								
Bacon or Pork,	lbs.	298	18 8 8				298	18 8 8	
Minerals,	bots.								
Pepper,	lbs.								
Salt,	lbs.	56	3 4				56	3 4	
Ox Heads,	No.	1	3 6				2	7 2	
Sheep Heads,	No.								
Vegetables,	value	6	14				6	14	
Tobacco,	ozs.	12	5 4	Riggett	32	14 4	44	19 8	
Snuff,	ozs.								
Soup,	lbs.			Keane	3	2 3	3	2 3	
Lam		1 1/2	1 3						
Cheese		1/2	11						
Total Provisions			61 16 8			29 17 7	91 14 3		
NECESSARIES.									
Coals,	cwts.	1250	163 5 6				1250	163 5 6	
Candles (Paraffin),	lbs.	3	2 5				3	2 6	
Soap,	lbs.	70	1 5				70	1 5	
Starch,	lbs.			Riggett	10	5	10	5	
Washing Soda,	lbs.			Keane	224	11 6	224	11 6	
Ball Blue,	lbs.			Riggett	5	5	5	5	
Paraffin Oil,	gals.	30	3 6				33	3 6	
Total Necessaries			167 19 6			1 1 0	169 0 6		
GROSS TOTAL,			229 16 2			30 18 7	260 14 4		

NOTES: A Sheet of this Form and of the Provision Check Account (Form 25), may be printed alternately in the same book, this Form second; or the forms may be bound in separate books. The Quantities consumed must correspond with the Total Quantities (Note (d)) shown in the Provision Check Account, and these Quantities, with the Stock in Hand, must equal the Total on hand and received.

ARTICLES CONSUMED AND REMAINING

REQUIREMENTS

ARTICLES	CONSUMED			REMAINING			Quantities Wanted	Initials of Chairman authorising Articles to be Ordered	No. of Order (Form 6)
	Quantity*	Cost		Quantity	Cost				
PROVISIONS.									
White Bread,	lbs.	412	3 7 3	244	2 5 9				
Beef,	lbs.	58	4 2	50	3 7 8				
Mutton,	lbs.								
Oatmeal,	lbs.		1 15 2						
Sweet Milk,	qts.		8 3 6						
Tea,	ozs.		1 5 10	2767	23 1 2				
Soft Sugar,	lbs.		13 4	93	2 10 3				
Rice,	lbs.								
Eggs,	No.	287	4 3 6	134	1 16 6				
Wine,	ozs.	28	4 1		2 3				
Whiskey†	ozs.	21	7 4	247	4 2				
Porter	pints								
Arrowroot,	ozs.	8	6	82	5 2				
Brandy,†	ozs.								
Oranges and Lemons,	No.								
Biscuits,	lbs.								
Butter,	lbs.	30	1 15 6	71	4 7				
Flour,	lbs.								
Potatoes,	lbs.	51	1 18 3						
Brown Bread,	lbs.								
Bacon or Pork,	lbs.	45 1/2	2 15 4	252 1/2	15 13 4				
Minerals,	bots.								
Pepper,	lbs.								
Salt,	lbs.	14	3 10	42	2 6				
Ox Heads,	No.	1	3 6	1	3 6				
Sheep Heads,	No.	4	8	2	4				
Vegetables,	value		14						
Tobacco,	ozs.	27	12 2	17	7 6				
Snuff,	ozs.								
Soup,	lbs.	8	2 3						
Lam		1 1/2	1 3						
Cheese		1/2	11						
Total Provisions			33 2 8		58 11 7				
NECESSARIES.									
Coals,	cwts.	50	6 10 8	1200	156 14 10				
Candles (Paraffin),	lbs.	1	10	2	1 8				
Soap,	lbs.	28	10	42	15				
Starch,	lbs.	1/2	3	9 1/2	4 9				
Washing Soda,	lbs.	4	2	220	11 4				
Ball Blue,	lbs.	1/2	6	4 1/2	4 6				
Paraffin Oil,	gals.	6	12	27	2 14				
Total Necessaries,			7 14 5		161 6 1				
GROSS TOTAL,			40 17 1		219 17 8				

(*) Spirits, if not reduced before delivery into the Workhouse Store, should be reduced to a strength not lower than 17 under proof, and the number of ounces to be entered as received shall be 160 for each gallon of spirits at the strength to which the same shall have been so reduced.

3rd November '17

ARTICLES ON HAND AND RECEIVED

ARTICLES	ON HAND			Contractor	Invoice No.	RECEIVED			TOTAL					
	Quantity	Cost				Quantity	Cost		Quantity	Cost				
		£	s.				d.	£		s.	d.	£	s.	d.
PROVISIONS.														
White Bread, lbs.	244	2	5	9	McCarthy	308	2	17	9	552	5	3	6	
Beef, lbs.					Quinn	18	1	7			113	7	14	8
Mutton, lbs.	50	3	7		55	45	3	3						
Oatmeal, lbs.					Nolan	140	3	2	6	140	3	2	6	
Sweet Milk, qts.					Farm	432	8	2		432	8	2		
Tea, ozs.	2767	23	1	2						2767	23	1	2	
Soft Sugar, lbs.	93	2	13	3						93	2	13	3	
Rice, lbs.														
Eggs, No.	134	1	16	6	Flanagan	160	2	3	4	294	3	19	10	
Wine, ozs.	12		2	3						12		2	3	
Whiskey, ozs.	247	4	2							247	4	2		
Porter, pints														
Arrowroot, ozs.	82		5	2						82		5	2	
Brandy, f														
Oranges and Lemons, No.														
Biscuits, lbs.														
Butter, lbs.	71	4	7							71	4	7		
Flour, lbs.					Farm									
Potatoes, lbs.						41	1	10	9	41	1	10	9	
Brown Bread, lbs.														
Bacon or Pork, lbs.	2522	15	13	4						2522	15	13	4	
Minerals, bots.														
Pepper, lbs.					Piggott	2		8	6	2		3	6	
Salt, lbs.	42		2	6						42		2	6	
Ox Heads, No.	1		3	6	Quinn	1		3	6					
Sheep Heads, No.	2		4		50	6		12		8		16		
Vegetables, value					Farm			14				14		
Tobacco, ozs.	17		7	6	Diagott	32		14	4	49		17	10	
Suiff, ozs.														
Jam, lbs.					Kearns	3		2	3	3		2	3	
Sau, lbs.					20	12		9	5	12		9	5	
Cheese, lbs.					20	2		4		2		4		
Total Provisions			53	17	7			25	6	4		83	17	11
NECESSARIES.														
Coals, cwt.	1200	15	6	14				1200	15	6	14			
Candles (Paraffin), lbs.	2		1	8				2		1	8			
Soap, lbs.	42		15					42		15				
Starch, lbs.	92		4	9				92		4	9			
Washing Soda, lbs.	220		11	4				220		11	4			
Ball Blue, lbs.	42		4	6				42		4	6			
Paraffin Oil, gals.	27		2	14				27		2	14			
Total Necessaries			161	6	1					161	6	1		
GROSS TOTAL			219	17	8			256	4			245	4	

Notes: A Sheet of this Form and of the Provision Check Account (Form 25), may be printed alternately in the same book, this Form second; or the forms may be bound in separate books. * The Quantities consumed must correspond with the Total Quantities (Note (d)) shown in the Provision Check Account, and these Quantities, with the Stock in Hand, must equal the Total on hand and received.

ARTICLES CONSUMED AND REMAINING

REQUIREMENTS

ARTICLES	CONSUMED			REMAINING			Quantities Wanted	Initials of Chairman authorising Articles to be Ordered	No. of Order (Form 6)	
	Quantity*	Cost		Quantity	Cost					
		£	s.		d.	£				s.
PROVISIONS.										
White Bread, lbs.	425	3	19	8	127	1	3	10		
Beef, lbs.	622	4	4		502	3	10	8		
Mutton, lbs.										
Oatmeal, lbs.	112	2	10		28	12	6			
Sweet Milk, qts.	432	8	2							
Tea, ozs.	111		18	6	2656	22	2	8		
Soft Sugar, lbs.	93		2	13	3					
Rice, lbs.	26		14	8	67	7	18	7		
Eggs, No.	186	3	17	10	8		2			
Wine, ozs.	12		2	3						
Whiskey, ozs.	35		9	2	212	3	12	10		
Porter, pints										
Arrowroot, ozs.					82		5	2		
Brandy, f										
Oranges and Lemons, No.										
Biscuits, lbs.										
Butter, lbs.	35	2	2	6	36	2	4	6		
Flour, lbs.										
Potatoes, lbs.	41	1	10	9						
Brown Bread, lbs.										
Bacon or Pork, lbs.	442	2	14	8	2072	12	18	8		
Minerals, bots.										
Pepper, lbs.					2		3	6		
Salt, lbs.	71		3	5	35		10	3		
Ox Heads, No.	6		12		1		6			
Sheep Heads, No.					2		4			
Vegetables, value					14		4			
Tobacco, ozs.	27		14		22		9	10		
Suiff, ozs.										
Jam, lbs.	3		2	3						
Sau, lbs.	12		9	5	102		8	3		
Cheese, lbs.	2		4		12		3			
Total Provisions			33	12	4		50	5	7	
NECESSARIES.										
Coals, cwt.	50	6	10	8	1150	15	0	4	2	
Candles (Paraffin), lbs.	1		10		1		10			
Soap, lbs.	212		7	3	21		7	4	6	
Starch, lbs.					9		4			
Washing Soda, lbs.	84		3		212		11	1		
Ball Blue, lbs.					6		4			
Paraffin Oil, gals.	9		18		18		1	16		
Total Necessaries			7	18	0		153	8	1	
GROSS TOTAL			41	10	4		203	13	8	

(†) Spirits, if not reduced before delivery into the Workhouse Store, should be reduced to a strength not lower than 17 under proof, and the number of ounces to be entered as received shall be 160 for each gallon of spirits at the strength to which the same shall have been so reduced.

10th Nov 17

INMATES

Table with columns: Class No., Description of the Classes in the Diet Table, Meals, and a grid for days of the week (S, M, T, W, T, F, S) with 'TOTALS' and 'Suppers of Bread' columns.

Summary table for 'Number of Inmates in the Workhouse each day taken from the Diet Class Book' with columns for days of the week and a total.

Summary table for 'Total Provisions and Necessaries consumed by Inmates during the Week' with columns for Officers' Rations and Total Provisions.

OFFICERS' RATIONS FOR THE WEEK

Table listing various commodities (White Bread, Meat, Milk, Tea, Sugar, Eggs, Butter, Potatoes, Vegetables, Coal, Candles, Soap, Starch, Blue, Paraffin Oil) with columns for quantity, contract price, and cost.

PROVISIONS CONSUMED

NECESSARIES CONSUMED

Main table for 'PROVISIONS CONSUMED' and 'NECESSARIES CONSUMED' with columns for various food items and their quantities.

MILK RECEIVED.

7 lbs Bacon used in lun 7th & 8th week

mp

Summary table for 'General Average Cost' with columns for Infirmary and Fever Hospital.

Notes—(a) In this and following like spaces insert day of the month. (b) The particulars to be brought from the Weekly Summary of the Diet Book for the Sick. (c) This Total must correspond with the Total in the same week in the Indoor Relief List (Form 25). (d) This Total is to be carried each week to the Provision Receipt and Consumption Account (Form 26) a sheet of which is to be printed alternately with this Account, this Form being placed first. (e) An ounce of Spirits is equal to two-fifths of an Imperial glass.

10th Nov 17

ARTICLES ON HAND AND RECEIVED

Table with columns for ARTICLES, ON HAND, RECEIVED, and TOTAL. Includes rows for White Bread, Beef, Mutton, Oatmeal, Sweet Milk, Tea, Soft Sugar, Rice, Eggs, Wine, Whiskey, Porter, Arrowroot, Brandy, Oranges and Lemons, Biscuits, Butter, Flour, Potatoes, Brown Bread, Bacon or Pork, Minerals, Pepper, Salt, Ox Heads, Sheep Heads, Vegetables, Tobacco, Snuff, Jam, and Cheese. Includes handwritten notes like '28 1/2 (120)', 'Farm', 'Keane', and 'Flemagan'.

Total Provisions

NECESSARIES.

Table with columns for ARTICLES, ON HAND, RECEIVED, and TOTAL. Includes rows for Coals, Candles (Paraffin), Soap, Starch, Washing Soda, Ball Blue, and Paraffin Oil.

Total Necessaries

GROSS TOTAL

ARTICLES CONSUMED AND REMAINING

Table with columns for ARTICLES, CONSUMED, REMAINING, and REQUIREMENTS. Includes rows for White Bread, Beef, Mutton, Oatmeal, Sweet Milk, Tea, Soft Sugar, Rice, Eggs, Wine, Whiskey, Porter, Arrowroot, Brandy, Oranges and Lemons, Biscuits, Butter, Flour, Potatoes, Brown Bread, Bacon or Pork, Minerals, Pepper, Salt, Ox Heads, Sheep Heads, Vegetables, Tobacco, Snuff, Jam, and Cheese.

Total Provisions

NECESSARIES.

Table with columns for ARTICLES, CONSUMED, REMAINING, and REQUIREMENTS. Includes rows for Coals, Candles (Paraffin), Soap, Starch, Washing Soda, Ball Blue, and Paraffin Oil.

Total Necessaries

GROSS TOTAL

NOTES: A Sheet of this Form and of the Provision Check Account (Form 25), may be printed alternately in the same book, this Form second; or the forms may be bound in separate books. *The Quantities consumed must correspond with the Total Quantities (Note (a)) shown in the Provision Check Account, and these Quantities, with the Stock in Hand, must equal the Total on hand and received.

(†) Spirits, if not reduced before delivery into the Workhouse Store, should be reduced to a strength not lower than 17 under proof, and the number of ounces to be entered as received shall be 160 for each gallon of spirits at the strength to which the same shall have been so reduced.

17th Nov 17

INMATES

Table with columns for Class No., Description of the Classes in the Diet Table, Meals, and NUMBER OF INMATES FOR EACH ON EACH DAY (S, M, T, W, T, F, S).

Summary table for Number of Inmates in the Workhouse each day taken from the Diet Class Book (Sunday to Saturday) and Total Provisions and Necessaries consumed by Inmates during the Week.

OFFICERS' RATIONS FOR THE WEEK table with columns for CONSUMED, Officer Name, and Quantity/Contract Price/Cost.

PROVISIONS CONSUMED

NECESSARIES CONSUMED

Main table for PROVISIONS CONSUMED and NECESSARIES CONSUMED with columns for various food items and their quantities.

7 lbs Bacon used in lieu of fresh meat

Same as last week

NOTES - (a) In this and following like spaces insert day of the month. (b) The particulars to be brought from the Weekly Summary of the Diet Book for the Sick...

Summary table for General Average Cost, Infirmary, and Fever Hospital.

TOTAL, £ 7 11 11

17th Nov 17

ARTICLES ON HAND AND RECEIVED

ARTICLES	ON HAND			Contractor	Invoice No.	RECEIVED			TOTAL			
	Quantity	Cost				Quantity	Cost		Quantity	Cost		
		£	s. d.				£	s. d.		£	s. d.	
PROVISIONS.												
White Bread,	lbs.	187	14	6	McCarthy	416	3	18	600	15	12	6
Beef,	lbs.	48	3	8	Quinn	35	2	12	126	18	17	10
Mutton,	lbs.	43			Quinn	43			175	3	18	2
Oatmeal,	lbs.	35	15	8	Nolan	140	3	2	440	18	8	5
Sweet Milk,	qts.	2533	21	2	Farm	440	8	5	2533	21	2	2
Tea,	ozs.	42	1	4					42	1	4	4
Soft Sugar,	lbs.											
Rice,	lbs.											
Eggs,	No.	28			Flanagan	280	3	5	280	3	5	4
Wine,	ozs.				Keane	104	12		104	12		
Whiskey†	ozs.	170	3	10					170	3	10	
Porter	pints											
Arrowroot,	ozs.	82		5					82		5	2
Brandy,†	ozs.											
Oranges and Lemons,	No.											
Biscuits,	lbs.											
Butter,	lbs.	6		7	McMahon	112	6		118	6	7	
Flour,	lbs.				Farm	50	1	17	50	1	17	6
Potatoes,	lbs.											
Brown Bread,	lbs.											
Bacon or Pork,	lbs.	106	10	7					166	10	7	2
Minerals,	bots.											
Pepper,	lbs.	1/2		3					1/2		3	1
Salt,	lbs.	28		1					28		1	8
Ox Heads,	No.	1		3	Quinn	1	3	6	2		7	
Sheep Heads,	No.	2		4	Quinn	5	10		7		14	
Vegetables,	value				Farm		14		7		14	
Tobacco,	ozs.	18		8	Dignam	32	14	4	50	1	2	
Snuff,	ozs.				Keane	3	2	3	3		2	3
Soap	lbs.											
Lard	lbs.											
Cheese	lbs.											
Total Provisions		43	15	1		34	14	3	78	9	4	
NECESSARIES.												
Coals,	cwts.	1090	142	7	Nolan	1090	142	7	1090	142	7	5
Candles (Paraffin),	lbs.											
Soap,	lbs.											
Starch,	lbs.	9		4					9		4	6
Washing Soda,	lbs.	254		10					254		10	11
Ball Blue,	lbs.	44		4					44		4	
Paraffin Oil,	gals.	7		14	Cann	7		14	7		14	
Total Necessaries		1440	10				12		144	12	10	
GROSS TOTAL,		187	15	11		35	6	3	220	2	2	

ARTICLES CONSUMED AND REMAINING

REQUIREMENTS

ARTICLES	CONSUMED			REMAINING			Quantities Wanted	Initials of Chairman authorising Articles to be Ordered	No. of Order (Form 6)
	Quantity*	Cost		Quantity	Cost				
		£	s. d.		£	s. d.			
PROVISIONS.									
White Bread,	lbs.	427	14	173	1	12	6		
Beef,	lbs.	60	4	66	4	12			
Mutton,	lbs.	129	2	46	1				
Oatmeal,	lbs.	440	8	2405	20	10			
Sweet Milk,	qts.	128	1	22		12	4		
Tea,	ozs.	20							
Soft Sugar,	lbs.	260	3	20		4	8		
Rice,	lbs.	59	1	100		11	6		
Eggs,	No.			111	2				
Wine,	ozs.								
Whiskey†	ozs.								
Porter	pints								
Arrowroot,	ozs.			82		5	2		
Brandy,†	ozs.								
Oranges and Lemons,	No.								
Biscuits,	lbs.								
Butter,	lbs.	35	1	83	4	9	6		
Flour,	lbs.	50	1						
Potatoes,	lbs.								
Brown Bread,	lbs.								
Bacon or Pork,	lbs.	422	2	123	7	14	8		
Minerals,	bots.								
Pepper,	lbs.	4		1/2		2	9		
Salt,	lbs.	14		14		3	10		
Ox Heads,	No.	1		1		3	8		
Sheep Heads,	No.	5		2		4			
Vegetables,	value								
Tobacco,	ozs.	28		22		9	10		
Snuff,	ozs.								
Soap	lbs.	3		7		5	10		
Lard	lbs.	1/2		1/2		1			
Cheese	lbs.								
Total Provisions			33	18	5	44	10	11	
NECESSARIES.									
Coals,	cwts.	60	1	1030	134	10	8		
Candles (Paraffin),	lbs.	1		5		10			
Soap,	lbs.								
Starch,	lbs.	18		8		4			
Washing Soda,	lbs.	184		196		10	8		
Ball Blue,	lbs.			4		3	11		
Paraffin Oil,	gals.	7							
Total Necessaries,			8	13	7	135	19	3	
GROSS TOTAL,			42	12	0	180	18	2	

NOTES: A Sheet of this Form and of the Provision Check Account (Form 25), may be printed alternately in the same book, this Form second.; or the forms may be bound in separate books. *The Quantities consumed must correspond with the Total Quantities (Note (d)) shown in the Provision Check Account, and these Quantities, with the Stock in Hand, must equal the Total on hand and received.

(†) Spirits, if not reduced before delivery into the Workhouse Store, should be reduced to a strength not lower than 17 under proof, and the number of ounces to be entered as received shall be 100 for each gallon of spirits at the strength to which the same shall have been so reduced.

pt Dec 17

ARTICLES ON HAND AND RECEIVED

ARTICLES	ON HAND				RECEIVED				TOTAL						
	Quantity	Cost			Contractor	Invoice No.	Quantity	Cost			Quantity	Cost			
		£	s.	d.				£	s.	d.		£	s.	d.	
PROVISIONS.															
White Bread,	lbs.	161	1	10	2	<i>M^o Barry</i>	298	2	15	10	459	1	4	6	
Beef,	lbs.					<i>Quinn</i>					99	2	6	18	
Mutton,	lbs.	60	4	5	8	<i>do</i>	32	2	2	8					
Oatmeal,	lbs.					<i>Nolan</i>	140	3	2	6	140	3	2	6	
Sweet Milk,	qts.					<i>Farm</i>	468	5	17		468	5	17		
Tea,	ozs.										2293	19	2	2	
Soft Sugar,	lbs.	2293	19	2	2	<i>Nolan</i>	56	1	16	3	2293	19	2	2	
Rice,	lbs.										86	1	16	3	
Eggs,	No.	3 1/2 = 120				<i>Flanagan</i>	300	3	17	6	350	1	4	9	
Wine,	ozs.	60									49	1	13	8	
Whiskey†	ozs.	49									91	1	13	2	
Porter	pints	91									82	1	5	2	
Arrowroot,	ozs.	82													
Brandy,†	ozs.														
Oranges and Lemons,	No.														
Biscuits,	lbs.					<i>Flanagan</i>	2	4	4		49	1	2	15	
Butter,	2/2 lbs.	47	2	11		<i>Farm</i>	76	2	17		76	2	17		
Flour,	lbs.					<i>Boone</i>	587	47	18	11	668	2	15	7	
Potatoes,	lbs.														
Brown Bread,	17/16 lbs.														
Bacon or Pork,	183/64 1/7 28 lbs.	8 1/2	5	2	8										
Minerals,	bots.														
Pepper,	lbs.	14									14				
Salt,	lbs.	49									49				
Ox Heads,	No.	4									4				
Sheep Heads,	No.	2									2				
Vegetables,	value														
Tobacco,	ozs.	16				<i>Farm</i>	24	10	9		40	1	18		
Snuff,	ozs.					<i>Sigaret</i>					40	1	18		
<i>Soup</i>	pts.	6				<i>Keane</i>	3	4	6		3	4	6		
<i>Chese</i>						<i>Keane</i>	2	2	8		2	2	8		
Total Provisions		36	12	4			73	5	14		109	18	3		
NECESSARIES.															
Coals,	cwts.	970	126	13	11		970	126	13	11		970	126	13	11
Candles (Paraffin),	lbs.	4					4				4				
Soap,	lbs.	49					49				49				
Starch,	lbs.	188					188				188				
Washing Soda,	lbs.	33					33				33				
Ball Blue,	lbs.	41					41				41				
Paraffin Oil,	gals.														
Total Necessaries		133	3	6			133	3	6		133	3	6		
GROSS TOTAL,		169	15	10			73	5	11		243	1	9		

NOTES: A Sheet of this Form and of the Provision Check Account (Form 25), may be printed alternately in the same book, this Form second; or the forms may be bound in separate books.

ARTICLES CONSUMED AND REMAINING

ARTICLES	CONSUMED				REMAINING				Requirements	Initials of Chairman authorising Articles to be Ordered	No. of Order (Form 6)
	Quantity*	Cost			Quantity	Cost					
		£	s.	d.		£	s.	d.			
PROVISIONS.											
White Bread,	lbs.	346	1	16	6	113	1	9	6		
Beef,	lbs.	60	4	5	8	39	2	16	6		
Mutton,	lbs.					13		5	6		
Oatmeal,	lbs.	227	2	17							
Sweet Milk,	qts.	468	5	17							
Tea,	ozs.	121	1	1		217	18	2			
Soft Sugar,	lbs.	25	1	16	5	31	1				
Rice,	lbs.	288	3	13	6	62	1	16			
Eggs,	No.	31				18		2			
Wine,	ozs.	91				77		1	6		
Whiskey†	ozs.	14				82		5	2		
Porter	pints										
Arrowroot,	ozs.										
Brandy,†	ozs.										
Oranges and Lemons,	No.										
Biscuits,	lbs.	30	1	14		19	1	1	4		
Butter,	lbs.										
Flour,	lbs.	76	2	17							
Potatoes,	lbs.	43	2	1	5	625	5		2		
Brown Bread,	lbs.										
Bacon or Pork,	lbs.										
Minerals,	bots.										
Pepper,	lbs.	4				1		1	10		
Salt,	lbs.	21				29		2	6		
Ox Heads,	No.	5				1		1	6		
Sheep Heads,	No.										
Vegetables,	value										
Tobacco,	ozs.	29				11		5	9		
Snuff,	ozs.										
<i>Soup</i>	pts.	3				4		3	6		
<i>Chese</i>		1/2				1/2		2			
Total Provisions		30	13	0		79	5	3			
NECESSARIES.											
Coals,	cwts.	60	7	16	9	910	118	17	2		
Candles (Paraffin),	lbs.					3		6	6		
Soap,	lbs.	49				14		6	2		
Starch,	lbs.	188				6		3			
Washing Soda,	lbs.	33				180		10	3		
Ball Blue,	lbs.	41				33		3	6		
Paraffin Oil,	gals.	12	1	4		29		2	18		
Total Necessaries		9	19	5		123	4	1			
GROSS TOTAL,		40	12	5		202	9	4			

(†) Spirits, if not reduced before delivery into the Workhouse Store, should be reduced to a strength not lower than 17 under proof, and the number of ounces to be entered as received shall be 160 for each gallon of spirits at the strength to which the same shall have been so reduced.

8th December 17

INMATES

Table with columns: Class No., Description of the Classes in the Diet Table, Meals, NUMBER OF INMATES FOR EACH ON EACH DAY (S, M, T, W, Th, F, S), TOTAL FOR THE WEEK (TOTALS, Dinners of Potatoes, Suppers of Bread).

Summary table: Number of inmates in the Workhouse each day taken from the Diet Class Book (Sunday to Saturday) and Total Provisions and Necessaries consumed by inmates during the week.

Table: OFFICERS' RATIONS FOR THE WEEK. Columns include: COMMODITY, Master, Nurse, Schoolmistress, Night Nurse, Hospital Attendants, Fever Hospital Nurse, Wardmistress, Porter, Workmistress, Total Quantity, Contract Price, Cost.

PROVISIONS CONSUMED

NECESSARIES CONSUMED

Main consumption table with columns for various food items (e.g., Fresh Meat, Potatoes, Flour, Tea, Sugar, Eggs, Butter, etc.) and their quantities.

Table: MILK RECEIVED. Includes handwritten notes and a summary table with columns: General Average Cost, Infirmary, Fever Hospital.

Notes: (a) In this and following like spaces insert day of the month. (b) The particulars to be brought from the Weekly Summary of the Diet Book for the Sick. (c) This Total must correspond with the Total in the same week in the Indoor Relief List (Form 22). (d) This Total is to be carried each week to the Provision Receipt and Consumption Account (Form 26) a sheet of which is to be printed alternately with this Account, this Form being placed first. (e) An ounce of Spirits is equal to two-fifths of an Imperial glass.

15th December '17

for the 11th Week of the Half-year ending the 31st day of March 1918

DOLLARD, PRINTINGHOUSE, DUBLIN

INMATES

Class No.	Description of the Classes in the Diet Table	Meals	NUMBER OF INMATES FOR EACH ON EACH DAY							TOTALS	Dinners of Potatoes	Supplies of Bread
			S. (9)	M (10)	T. (11)	W. (12)	T. (13)	F. (14)	S. (15)			
I.	Able-bodied Males not working satisfactorily, including Tramps No. 1	Breakfast					4		4	9	✓	
		Dinner										
		Supper										
No. 2	Able-bodied working Males	Breakfast		1	4	1	1		2	10	✓	
		Dinner										
		Supper										
II.	Able-bodied Females not working satisfactorily, including Tramps No. 1	Breakfast					1		1	2	✓	
		Dinner										
		Supper										
No. 2	Able-bodied Working Females	Breakfast							2	4	✓	
		Dinner										
		Supper										
III.	Aged and Infirm Adults of either sex, above 15 years of age No. 1	Breakfast	35	30	30	30	30	30	30	213	213	✓
		Dinner										
		Supper										
No. 2	Aged and Infirm Adults of either sex, above 15 years of age	Breakfast	11	11	11	11	11	11	11	77	77	✓
		Dinner										
		Supper										
IV.	Boys and Girls above 9 and under 15 years of age	Breakfast								7	✓	
		Dinner										
		Supper										
V.	Children above 5 and under 9 years of age	Breakfast	3	3	3	3	3	3	3	21	✓	
		Dinner										
		Supper										
VI.	Children above 2 and under 5 years of age	Breakfast	4	4	4	4	4	4	4	28	✓	
		Dinner										
		Supper										
VII.	Children under 2 years	Breakfast	2	2	2	2	2	2	2	14	✓	
		Dinner										
		Supper										
VIII.	Nursing Mothers and Infants (see Medical Weekly Return)	Breakfast								20	✓	
		Dinner										
		Supper										
IX.	Hospital Attendants In Fever Hospital (b) In Workhouse Hospital (b)	Breakfast								26	23	186
		Dinner										
		Supper										
Extras to Women doing Laundry Work, or having other charges Do. to Women washing for the Infirmary (Not to exceed 4 for two days)												

Number of inmates in the Workhouse each day taken from the Diet Class Book

Sunday	Monday	Tuesday	Wednesday	Thursday	Friday	Saturday	(c) Collective Number of Days
81	84	92	85	85	84	84	597

Total Provisions and Necessaries consumed by inmates during the week

Officers' Rations for the week

Total Provisions and Necessaries Consumed during the week

OFFICERS' RATIONS FOR THE WEEK

Quantity	Contract Price	Cost
White Bread, lbs.		34
Meat, lbs.		17 1/2
Milk, qts.		42
Tea, ozs.		2 1/2
Sugar, lbs.		4 1/2
Eggs, No.		70
Butter, lbs.		2 1/2
Potatoes, lbs.		98
Vegetables, value	4.10.5	3
Bacon, lbs.		1 1/2
		19
Coals, cwt.		2
Candles, lbs.		1
Soap, lbs.		1
Starch, lbs.		1
Blue, lbs.		1
Paraffin Oil, gals.		10 2
TOTAL, £		7 13 9

Same as last week

Galway County Council Archives

PROVISIONS CONSUMED

NECESSARIES CONSUMED

White Bread	Fresh Meat	Animal	Sweet Milk	Tea	Soft Sugar	Rice	Eggs	Wine	Whisky	Butter	Arrowroot	Starchy	Unseasoned Apples	Benefits	Essential	Ferrous	Potatoes	Brown Bread	Home or Park	Minerals	Tea	Soap	Starch	Washing Soda	Ball Blue	Paraffin Oil
10 1/2	4 1/2	2 1/2	2 1/2	3 1/2	2 1/2	1	1	1	1	1	1	1	1	1	1	1	1	1	1	1	1	1	1	1	1	1

MILK RECEIVED.

Notes—(a) In this and following like spaces insert day of the month. (b) The particulars to be brought from the Weekly Summary of the Diet Book for the Sick. (c) This Total must correspond with the Total in the same week in the Indoor Relief List (Form 22). (d) This Total is to be carried each week to the Provision Receipt and Consumption Account (Form 26) a sheet of which is to be printed alternately with this Account, this Form being placed first. (e) An ounce of Spirits is equal to two-fifths of an Imperial glass.

INMATES

Class No.	Description of the Classes in the Diet Table	Meals	NUMBER OF INMATES FOR EACH ON EACH DAY							TOTAL FOR THE WEEK			
			S. (16)	M (17)	T. (18)	W. (19)	T. (20)	F. (21)	S. (22)	TOTALS	Dinners of Potatoes	Suppers of Bread	
I.	Able-bodied Males not working satisfactorily, including Tramps No. 1	Breakfast	1								1		
		Dinner											
		Supper											
No. 2	Able-bodied working Males	Breakfast									2		
		Dinner											
		Supper											
II.	Able-bodied Females not working satisfactorily, including Tramps No. 1	Breakfast	2								2		
		Dinner											
		Supper											
No. 2	Able-bodied Working Females	Breakfast	3	3	3	3	3	3	3	3	3		
		Dinner	3	3	3	3	3	3	3	3	3		
		Supper	3	3	3	3	3	3	3	3	3		
III.	Aged and Infirm Adults of either sex, above 15 years of age No. 1	Breakfast	31	31	31	31	31	31	31	31	31		
		Dinner	31	31	31	31	31	31	31	31	31		
		Supper	31	31	31	31	31	31	31	31	31		
No. 2	Aged and Infirm Adults of either sex, above 15 years of age	Breakfast	11	11	11	11	11	11	11	11	11		
		Dinner	11	11	11	11	11	11	11	11	11		
		Supper	11	11	11	11	11	11	11	11	11		
IV.	Boys and Girls above 9 and under 15 years of age	Breakfast	1	1	1	1	1	1	1	1	1		
		Dinner	1	1	1	1	1	1	1	1	1		
		Supper	1	1	1	1	1	1	1	1	1		
V.	Children above 5 and under 9 years of age	Breakfast	3	3	3	3	3	3	3	3	3		
		Dinner	3	3	3	3	3	3	3	3	3		
		Supper	3	3	3	3	3	3	3	3	3		
VI.	Children above 2 and under 5 years of age	Breakfast	6	6	6	6	6	6	6	6	6		
		Dinner	6	6	6	6	6	6	6	6	6		
		Supper	6	6	6	6	6	6	6	6	6		
VII.	Children under 2 years	Breakfast	3	3	3	3	3	3	3	3	3		
		Dinner	3	3	3	3	3	3	3	3	3		
		Supper	3	3	3	3	3	3	3	3	3		
VIII.	Nursing Mothers and Infants (see Medical Weekly Return)	Breakfast											
		Dinner											
		Supper											
IX.	Hospital Attendants In Fever Hospital (b) In Workhouse Hospital (b)	Breakfast											
		Dinner											
		Supper											
Extras to Women doing Laundry Work, or having other charges													
Do. to Women washing for the Infirmary (Not to exceed 4 for two days)													

Number of Inmates in the Workhouse each day taken from the Diet Class Book								Total Provisions and Necessaries consumed by Inmates during the Week					
Sunday	Monday	Tuesday	Wednesday	Thursday	Friday	Saturday	(c) Collective Number of Days	Officers' Rations for the Week	Total Provisions and Necessaries Consumed during the Week				
81	82	82	82	81	82	84	574						

OFFICERS' RATIONS FOR THE WEEK

COMMODITY	Master	Nurs	Schoolmistress	Night Nurse	Hospital Attendants	Fever Hospital Nurse	Wardmistress	Porter	Workmistress	Total Quantity	Contract Price	Cost
White Bread, lbs.	22				16		4		4	36		2
Meat, lbs.	102			32	82		32		4	172		14
Milk, qts.					102		32		4	140		1
Tea, ozs.					102		32		4	140		1
Sugar, lbs.					102		32		4	140		1
Eggs, No.					102		32		4	140		1
Butter, lbs.					102		32		4	140		1
Potatoes, lbs.					102		32		4	140		1
Vegetables, value					102		32		4	140		1
Coal, cwt.	2	3		2	14		2		2	19		2
Candles, lbs.					2		1		1	4		1
Soap, lbs.					2		1		1	4		1
Starch, lbs.					2		1		1	4		1
Blue, lbs.					2		1		1	4		1
Paraffin Oil, gals.	2	22		1	1		12		12	10		1

TOTAL, £ 7 12 8

PROVISIONS CONSUMED

White Bread	Fresh Meat	Onion	Sweet Milk	Tea	Soft Sugar	Rice	Eggs	Wine	Whisky	Porter	Arrowroot	Ham	Onions and Carrots	Beetroot	Potatoes	Bacon	Bacon or Pork	Mince	Tea	Soap	Starch	Washing Soap	Ball Blue	Paraffin Oil
102	102	102	102	102	102	102	102	102	102	102	102	102	102	102	102	102	102	102	102	102	102	102	102	102

MILK RECEIVED.

General Average Cost	Infirmary	Fever Hospital

12 lbs Balm used in Cure 12 lbs Fresh Meat

Notes—(a) In this and following like spaces insert day of the month.
 (b) The particulars to be brought from the Weekly Summary of the Diet Book for the Sick.
 (c) This Total must correspond with the Total in the same week in the Indoor Relief List (Form 22).
 (d) This Total is to be carried each week to the Provision Receipt and Consumption Account (Form 26) a sheet of which is to be printed alternately with this Account, this Form being placed first.
 (e) An ounce of Spirits is equal to two-fifths of an Imperial gill.

29th December 17

INMATES

Table with columns: Class No., Description of the Classes in the Diet Table, Meals, NUMBER OF INMATES FOR EACH ON EACH DAY (S, M, T, W, T, F, S), TOTALS, Dinners of Potatoes, Suppers of Bread.

Summary table with columns: Sunday, Monday, Tuesday, Wednesday, Thursday, Friday, Saturday, Total Provisions and Necessaries consumed by Inmates during the Week, Officers' Rations for the Week, Total Provisions and Necessaries Consumed during the Week.

Table for OFFICERS' RATIONS FOR THE WEEK with columns: COMMODITY, Quantity, Contract Price, Cost. Includes items like White Bread, Meat, Milk, Tea, Sugar, Eggs, Butter, Potatoes, Vegetables, Bacon, Coals, Candles, Soap, Starch, Blue, Paraffin Oil.

PROVISIONS CONSUMED

NECESSARIES CONSUMED

Main consumption table with columns for various food items (White Bread, Fresh Meat, Oatmeal, Sweet Milk, Tea, Soft Sugar, Rice, Eggs, Wine, Whiskey, Porter, Arrowroot, Branley, Onions and Potatoes, Beans, Butter, Flour, Potatoes, Brown Bread, Bacon or Pork, Mince, Tea, Sugar, Soap, Starch, Washing Soda, Ball Blue, Paraffin Oil) and their respective quantities.

MILK RECEIVED.

Table for MILK RECEIVED with columns: General Average Cost, Infirmary, Fever Hospital.

Notes-(a) In this and following like spaces insert day of the month. (b) The particulars to be brought from the Weekly Summary of the Diet Book for the Sick. (c) This Total must correspond with the Total in the same week in the Indoor Relief List (Form 25). (d) This Total is to be carried each week to the Provision Receipts and Consumption Account (Form 26) a sheet of which is to be printed alternately with this Account, this Form being placed first. (e) An ounce of Spirits is equal to two-fifths of an Imperial glass.

for the 15th Week of the Half-year ending the 31st day of March 1918

DOLLARD, PRINTER, DUBLIN.

Main table with columns for Class No., Description of the Classes in the Diet Table, Meals, and NUMBER OF INMATES FOR EACH ON EACH DAY (S, M, T, W, T, F, S). Includes handwritten entries for dates and inmate counts.

Summary row: Number of inmates in the Workhouse each day taken from the Diet Class Book, Total Provisions and Necessaries consumed by inmates during the week, etc.

OFFICERS' RATONS FOR THE WEEK table with columns for Consumption (White Bread, Meat, Milk, Tea, Sugar, Eggs, Butter, Potatoes, Vegetables, Coals, Candles, Soap, Starch, Blue, Paraffin Oil) and various officer roles.

TOTAL, £ 7 12 4

Table with columns for PROVISIONS CONSUMED and NECESSARIES CONSUMED, including items like White Bread, Fresh Meat, Onions, Sweet Milk, Tea, Soft Sugar, etc., with handwritten consumption values.

MILK RECEIVED. 16 lbs Bacon used in lieu 16 lbs Fresh meat. General Average Cost table.



Notes-(a) In this and following like spaces insert day of the month. (b) The particulars to be brought from the Weekly Summary of the Diet Book for the Sick. (c) This Total must correspond with the Total in the same week in the Indoor Relief List (Form 22). (d) This Total is to be carried each week to the Provision Receipt and Consumption Account (Form 20) a sheet of which is to be printed alternately with this Account, this Form being placed first. (e) An ounce of Spirits is equal to two-fifths of an Imperial glass.

19th January '18

ARTICLES ON HAND AND RECEIVED

ARTICLES	ON HAND			RECEIVED			TOTAL							
	Quantity	Cost			Contractor	Invoice No.	Quantity	Cost						
		£	s.	d.				£	s.	d.	£	s.	d.	
PROVISIONS.														
White Bread, lbs.	43	✓	8		McCarthy	296	3	1	8	339	3	9	8	
Beef, lbs.	34	✓	2	6	4		45	3	-	79	5	6	4	
Mutton, lbs.					Quinn	140	2	2	6	210	4	13	9	
Oatmeal, lbs.	70	✓	1	11	3	Nolan	484	9	1	6	484	9	1	6
Sweet Milk, qts.					Farm					1388	11	11	4	
Tea, ozs.	1388	✓	11	11	4		30	17	6	30	17	6		
Soft Sugar, lbs.					Nolan									
Rice, lbs.														
Eggs, No.	164	✓	2	6	6	Flanagan	400	5	10	564	7	16	6	
Wine, ozs.	151	✓	19	3						151	19	3		
Whiskey†, ozs.	53	✓	1	1						53	1	1		
Porter, pints														
Arrowroot, ozs.	12	✓		9						12		9		
Brandy, †, ozs.														
Oranges and Lemons, No.														
Biscuits, lbs.														
Butter, lbs.	45	✓	1	17	6					45	1	17	6	
Flour, lbs.														
Potatoes, lbs.					Farm	80	3			80	3			
Brown Bread, lbs.														
Bacon or Pork, lbs.	358½	✓	30	17	1					358½	30	17	1	
Minerals, bobs.														
Pepper, lbs.														
Salt, lbs.	35	✓	2	10						35	2	10		
Ox Heads, No.	1	✓	3	6		Quinn	5	10		6	12			
Sheep Heads, No.	1	✓	2			Farm								
Vegetables, value						Pigott	16	7	2	30	15			
Tobacco, ozs.	14	✓	8											
Snuff, ozs.														
Soup, pts.						Kearse	3	2		3	2			
Lam, "	1½	✓	1	4						1½	1	4		
Cheese, "	2	✓		8						2		8		
Total Provisions			53	17	4					59	10	10		

NECESSARIES.													
Coals, cwts.	550	✓	7	16	8					550	7	16	8
Candles (Paraffin), lbs.	5½	✓	11							5½	11		
Soap, lbs.	980	✓	21	17	3					980	21	17	3
Starch, lbs.	2	✓	1							2	1		
Washing Soda, lbs.	132	✓	9							132	9		
Ball Blue, lbs.	1½	✓	1	6						1½	1	6	
Paraffin Oil, gals.						Keatinge	10			12	1	4	
Total Necessaries			94	16	5					1	4	9	
GROSS TOTAL,			148	13	9					30	14	10	

Notes: A Sheet of this Form and of the Provision Check Account (Form 25), may be printed alternately in the same book, this Form second.; or the forms may be bound in separate books.
 * The Quantities consumed must correspond with the Total Quantities (Note (d)) shown in the Provision Check Account, and these Quantities, with the Stock in Hand, must equal the Total on hand and received.

for the 16th Week of the Half-year ending the 31st day of March 1918

ARTICLES CONSUMED AND REMAINING

REQUIREMENTS

ARTICLES	CONSUMED			REMAINING			Quantities Wanted	Initials of Chairman authorising Articles to be Ordered	No. of Order (Form 6)		
	Quantity*	Cost			Quantity	Cost					
		£	s.	d.		£				s.	d.
PROVISIONS.											
White Bread, lbs.	300	✓	3	2	6	39	✓	7	2		
Beef, lbs.	54	✓	3	12	4	25	✓	1	14		
Mutton, lbs.											
Oatmeal, lbs.	105	✓	2	6	10	105	✓	2	6	11	
Sweet Milk, qts.	484	✓	9	1	6						
Tea, ozs.	160	✓	16	8		1288	✓	10	14	8	
Soft Sugar, lbs.	25	✓	16	4		2	✓	1	2		
Rice, lbs.											
Eggs, No.	274	✓	3	17		290	✓	3	19	6	
Wine, ozs.	38	✓	4	8		113	✓	14	7		
Whiskey†, ozs.	15	✓	5	9		38	✓	15	3		
Porter, pints											
Arrowroot, ozs.	12	✓		9							
Brandy, †, ozs.											
Oranges and Lemons, No.											
Biscuits, lbs.											
Butter, lbs.	20	✓	16	8		25	✓	1	10		
Flour, lbs.											
Potatoes, lbs.	80	✓	3								
Brown Bread, lbs.											
Bacon or Pork, lbs.	45½	✓	3	14	3	313	✓	27	2	10	
Minerals, bobs.											
Pepper, lbs.											
Salt, lbs.	14	✓		7		21	✓		2	3	
Ox Heads, No.	1	✓	3	6		1	✓	3	6		
Sheep Heads, No.	5	✓	10			1	✓	2			
Vegetables, value											
Tobacco, ozs.	27	✓	13	10		3	✓	1	4		
Snuff, ozs.											
Soup, pts.	3	✓	3								
Lam, "	1½	✓	1	4							
Cheese, "	2	✓		8							
Total Provisions			34	2	2			49	6	0	

NECESSARIES.										
Coals, cwts.	60	✓	7	16	8	490	✓	64		
Candles (Paraffin), lbs.	5½	✓	11			5	✓	10		
Soap, lbs.	35	✓	15	9		945	✓	21	1	6
Starch, lbs.	2	✓	1			12	✓	8	9	6
Washing Soda, lbs.	8	✓	6			124	✓	1	3	
Ball Blue, lbs.	1½	✓	1	6		14	✓	1	3	
Paraffin Oil, gals.	9	✓	18			3	✓	6		
Total Necessaries,			9	12	5			86	8	0
GROSS TOTAL,			43	14	7			135	14	0

(†) Spirits, if not reduced before delivery into the Workhouse Store, should be reduced to a strength not lower than 17 under proof, and the number of ounces to be entered as received shall be 160 for each gallon of spirits at the strength to which the same shall have been so reduced.

26th January 1918

INMATES

Table with columns: Class No., Description of the Classes in the Diet Table, Meals, and NUMBER OF INMATES FOR EACH ON EACH DAY (S, M, T, W, T, F, S). Includes rows for Able-bodied Males, Females, and Children.

Summary table for Number of inmates in the Workhouse each day taken from the Diet Class Book. Columns: Sunday to Saturday, Total Provisions and Necessaries consumed by inmates during the week.

OFFICERS' RATIONS FOR THE WEEK table. Columns: Officer (Master, Nurse, Schoolmistress, Night Nurse, Hospital Attendants, Fever Hospital Nurse, Wardmistress, Porter, Workmistress), Quantity, Contract Price, Cost.

PROVISIONS CONSUMED

NECESSARIES CONSUMED

Large grid table for recording consumption of various items like White Bread, Fresh Meat, Potatoes, etc. Includes handwritten entries and a summary at the bottom.

MILK RECEIVED

Table for recording Milk Received with columns for General Average Cost, Infirmary, and Fever Hospital.

Notes - (a) In this and following like spaces insert day of the month. (b) The particulars to be brought from the Weekly Summary of the Diet Book for the Sick. (c) This Total must correspond with the Total in the same week in the Indoor Relief List (Form 21). (d) This Total is to be carried each week to the Provision Receipt and Consumption Account (Form 20) a sheet of which is to be printed alternately with this Account, this Form being placed first. (e) An ounce of Spirits is equal to two-fifths of an Imperial glass.

