

The Clerk's Account of petty Disbursements made by him since last Meeting, amounting to £ was produced and passed.

The following Books were exhibited by the Clerk, he having first ascertained the accuracy of the entries made therein by the Master of the Workhouse, and authenticated the same by his signature:

1. The Weekly Relief List and Abstract.
2. The Provision Check Accounts.
3. The Provision Receipt and Consumption Account.

By which it appeared that the Cost of Provisions and Necessaries received during the week, was £ 24. 3. 1 d.

|  | £                                | s. | d. |
|--|----------------------------------|----|----|
| Debit Provision Account, and Credit Invoice Account.       | 24.                              | 3. | 1  |
| The Cost of Provisions and Necessaries consumed was        | 19.                              | 2. | 11 |
| Debit Maintenance Account, and Credit Provision Account.   | 19.                              | 2. | 11 |
| And the general average Cost of an Inmate for the week was | 2/10 <sup>3</sup> / <sub>4</sub> |    |    |
| Average cost in Infirmary,                                 | 2/9                              |    |    |
| Average cost in Fever Hospital,                            | 3/10                             |    |    |

The Master's estimate of Provisions and Necessaries required for the ensuing week was examined and Orders were duly made for the several articles specified, namely:

|                     |                  |
|---------------------|------------------|
| 1152 lb Bread       | 18 lb Sugar      |
| 56 lb Meat          | 14 " Rice        |
| 1/2 Ton Indian Meal | 1 " Pepper       |
| 1/10 Ton Oatmeal    | 1 Prot Wine      |
| 500 qts Milk        | 2 quarts Whiskey |
| 1 hwt Oat           | 2 bottles Porter |
| 100 lb Tea          | 20 lbs Sugar     |
| 2 lbs Potash        | 1/2 Doz Candles  |

The following Books were also produced by the Clerk, their accuracy having been previously ascertained by him, and authenticated by his Signature:

1. The several Clothing Accounts.
2. The Medical Officers' Books.

The Out-door Relief Lists and Weekly Receipt and Expenditure Books of the several Relieving Officers were then produced by the Clerk, their accuracy having been previously ascertained by him, and authenticated by his signature.

The Abstract of the Out-door Relief Lists was also produced by the Clerk, having been duly entered up by him for the last week ended Saturday, the day of ; whereby it appeared that in that week the Total Expenditure in Out-door Relief was

|           | £ | s. | d. |
|-----------|---|----|----|
| In money, | - | -  | -  |
| In kind,  | - | -  | -  |
| Total,    | - | -  | -  |

Credit each Relieving Officer, as per Receipt and Expenditure Book.

The requirements of each Relieving Officer for the ensuing week having been duly considered and estimated by the Board, checks on the Treasurer and orders on Contractors, were duly signed and delivered to each of them, of the following amounts and value, respectively:

| RELIEF DISTRICT. | Name of Relieving Officer. | By Check on Treasurer.<br>£ s. d. | By Order on Contractors. |                   | RELIEF DISTRICT. | Name of Relieving Officer. | By Check on Treasurer.<br>£ s. d. | By Order on Contractors. |                   |
|------------------|----------------------------|-----------------------------------|--------------------------|-------------------|------------------|----------------------------|-----------------------------------|--------------------------|-------------------|
|                  |                            |                                   | Article and quantity.    | Value.<br>£ s. d. |                  |                            |                                   | Article and quantity.    | Value.<br>£ s. d. |
| No. I.           |                            |                                   |                          |                   | Bt. forward      |                            |                                   |                          |                   |
| No. II.          |                            |                                   |                          |                   | No. X.           |                            |                                   |                          |                   |
| No. III.         |                            |                                   |                          |                   | No. XI.          |                            |                                   |                          |                   |
| No. IV.          |                            |                                   |                          |                   | No. XII.         |                            |                                   |                          |                   |
| No. V.           |                            |                                   |                          |                   | No. XIII.        |                            |                                   |                          |                   |
| No. VI.          |                            |                                   |                          |                   | No. XIV.         |                            |                                   |                          |                   |
| No. VII.         |                            |                                   |                          |                   | No. XV.          |                            |                                   |                          |                   |
| No. VIII.        |                            |                                   |                          |                   | No. XVI.         |                            |                                   |                          |                   |
| No. IX.          |                            |                                   |                          |                   | No. XVII.        |                            |                                   |                          |                   |
| Ca. forw'd.      |                            |                                   |                          |                   | TOTAL.           |                            |                                   |                          |                   |

Credit Treasurer with Checks.

Debit each Relieving Officer with Checks and Orders.

On the Report and recommendation of the Finance Committee the following Bills having been duly examined, and found to be correct, and in accordance with the several Orders were directed to be paid, and Checks for the several amounts were duly drawn on the Treasurer and Signed, namely:

| 1. Clothing Account. | £ | s. | d. |
|----------------------|---|----|----|
|                      |   |    |    |

Debit Clothing Account and Credit Treasurer with the several sums as above

2. Establishment Account.

|                           |    |    |   |
|---------------------------|----|----|---|
| Michael O'Neil Salary     | 3  | 15 | - |
| Andrew Lorde Salary of a  | 2  | -  | - |
| Martin Brogan Salary of a | 10 | -  | - |

Debit Establishment Account and Credit Treasurer with the several sums as above.



3. Warehouse Invoice Account.

|                       | £  | s. | d. |
|-----------------------|----|----|----|
| Michael King for Leaf | 7  | 6  |    |
| Mary Anty do          | 11 | 8  |    |

Debit Warehouse Invoice Account and Credit Treasurer with the several sums as above.

4. Out-door Relief Invoice Account.

|  | £ | s. | d. |
|--|---|----|----|
|  |   |    |    |

Credit Treasurer and Debit Out-door Relief Invoice Account with the several sums as above.

The Clerk's Report of Vaccination was read - (this on the first meeting in every month.) -  
Number of successful cases.

The Report of the Visiting Committee was read, and Orders were made thereon as follows:

Galway County Council Archives

The following cheques were ordered

|   |     |     |   |
|---|-----|-----|---|
| Comelius J. O'Brien for                             | 1.  | 5.  | 0 |
| Mary Dowling for groceries to 29 <sup>th</sup> Sept | 26. | 14. | 0 |
| John Leah for Amelias                               | 9.  | 10. | 6 |
| Martin O'Connell Salary to 29 <sup>th</sup> Sept    | 7.  | 10. | 0 |

By Treasurer  
Accepted Bills

The Reports of the Master and other Officers were read and Orders made thereon as follows:

The Medical Officer reports the Sanatory Condition of the inmates remains satisfactory



The following Orders of the Poor Law Commissioners were laid before the Board, and directions given thereon, as follows

The following Letters from the Poor Law Commissioners and others were read by the Clerk, and directions given to answer them respectively, to the following effect, or Orders made on them respectively as follows:

Letter from Poor Law Commissioners 2<sup>d</sup> December 1836 N<sup>o</sup> 30935 forwarding queries to be answered and answered by the Person who may be appointed to the office of Schoolmaster.

+ Letter from Poor Law Commissioners 17<sup>th</sup> December 1836. N<sup>o</sup> 32204, referring to Dr. Rodie's report with regard to the irregular state of the house and also of the Surgery on his last visit and recommending the Guardians to require explanations from the Officers, also suggesting that they should set an Iron fire guard in the Chamber.

— Letter from Poor Law Commissioners 17<sup>th</sup> December 1836 N<sup>o</sup> 32153 suggesting that the Guardians would consider the propriety of raising the Dispenary Salary if the Court should be desired of the Medical Officer.

On the day of Dr. Rodie's visit there were six Patients from daylight in the morning having Confessions which was the cause of any little irregularity he might have discovered.

— Ordered that a full meeting be held forth day fortnight to take the above into Consideration.



10  
10  
10  
10

The cases of provisional relief, and applications for relief were considered and decided on, as set forth in the Application and Report Books.

The number of provisional admissions to the Workhouse confirmed was - - - - - 6

Ditto disallowed - - - - - 5

The number of applicants admitted to the Workhouse was - - - - -

The number of cases of provisional Out-door relief was - - - - -

Do. do. in which relief was continued by the Guardians - - - - -

The number of other applicants in the Relieving Officer's Books relieved by order of the Guardians was - - - - -

The number of applicants for whom relief was not ordered

The Bonds and other securities in force were laid before the Guardians by the Clerk, together with his Report thereon, as follows: (this on the second Meeting after the Annual Election in every year.)

Ordered that the Pauper Seewats, of the Workhouse be provided with a Meat dinner on + Mas day in the following proportions viz One lb of Meat to each adult 3/4 lb to Children from 2 to 15 years. Hospital Seewats to be provided according to the requisition of the Medical Officer.

Ordered that the appointment of Overseers and Relieving Officer be postponed to this day fortnight

The Board have accepted the Tender of Michael Kir for supplying the Workhouse with best Beef at 1/3 per lb



The following Letters on matters arising under the Medical Charities Act or the Nuisances Removal and Diseases Prevention Acts, from the Poor Law Commissioners and others were read by the Clerk, and directions given to answer them respectively, to the following effect (or Orders were made on them respectively as follows:)

Read Letter from \_\_\_\_\_ dated \_\_\_\_\_ stating that \_\_\_\_\_

Galway County Council

Clerk of the Union.

Population in 1851. *76,257*

Present Net Annual Value, £*1053,13.11*

STATE of the WORKHOUSE for the Week ending Saturday, the *20th* day of *Decr* 185*6*.

| Number of Inmates for which accommodation is provided.    | No. that can be accommodated in each building. | Total No. in each building on the above date. | Able-bodied. |           | Aged and Infirm persons, and adult persons, above 15 years of age, but not working. |           | Boys and Girls above 9 and under 15 years of age. |           | Children above 5 and under 9 years of age. | Children above 2 and under 5 years of age. | Infants under 2 years of age. | RETURN OF SICK AND LUNATICS.          |  | OBSERVATIONS. |
|---|--|---|--------------|-----------|---|-----------|---|-----------|--|--|-------------------------------|---------------------------------------|--|---------------|
|   |  |   | Males.       | Fem.      | Males.  | Fem.      | Boys.   | Girls.    |  |  |                               | Number in Hospital on the above date. | No. of Lunatics and Idiots in Workhouse on the above date. |               |
| Workhouse, . . .  | <i>1150</i>                                    | <i>1053</i>                                   |              |           |   |           |   |           |  |  |                               |                                       |  |               |
| Temporary Buildings, . . .                                | <i>700</i>                                     |   |              |           |   |           |   |           |  |  |                               |                                       |  |               |
| Additional Workhouse, . . .                               |  |   |              |           |   |           |   |           |  |  |                               |                                       |  |               |
| Permanent Fever Hospital, . . .                           | <i>56</i>                                      | <i>5</i>                                      |              |           |   |           |   |           |  |  |                               |                                       |  |               |
| Fever Sheds, . . .  |  |   |              |           |   |           |   |           |  |  |                               |                                       |  |               |
| Total, . . .  | <i>1906</i>                                    | <i>1058</i>                                   |              |           |   |           |   |           |  |  |                               |                                       |  |               |
| Remaining on previous Saturday, as per last Return, . . . |  |   | <i>26</i>    | <i>49</i> | <i>5</i>  | <i>15</i> | <i>25</i>   | <i>73</i> | <i>7</i>                                   | <i>14</i>                                  | <i>12</i>                     | <i>166</i>                            |  |               |
| Admitted during the Week, . . .                           |  |   |              |           |   |           |   |           |  |  |                               | <i>5</i>                              |  |               |
| TOTAL, . . .  |  |   | <i>27</i>    | <i>53</i> | <i>5</i>  | <i>15</i> | <i>25</i>   | <i>73</i> | <i>7</i>                                   | <i>14</i>                                  | <i>13</i>                     | <i>172</i>                            |  |               |
| Discharged during the Week, . . .                         |  |   |              | <i>2</i>  |   |           |   |           |  |  |                               | <i>2</i>                              |  |               |
| Died, . . .   |  |   |              |           |   |           |   |           |  |  |                               |                                       |  |               |
| Total Discharged and Dead, . . .                          |  |   |              | <i>2</i>  |   |           |   |           |  |  |                               | <i>2</i>                              |  |               |
| REMAINING ON THE ABOVE DATE, . . .                        |  |   | <i>27</i>    | <i>57</i> | <i>5</i>  | <i>15</i> | <i>25</i>   | <i>13</i> | <i>7</i>                                   | <i>14</i>                                  | <i>13</i>                     | <i>170</i>                            |  |               |

RETURN of DESTITUTE PERSONS relieved out of the Workhouse, as by Relief Lists, for the last Week ended Saturday, the day of \_\_\_\_\_ authenticated and laid before the Board of Guardians at this Meeting.

| RELIEF DISTRICT. | Destitute Persons relieved out of the Workhouse under 10 Vict. c. 31, s. 1. |   | Destitute Persons relieved out of the Workhouse, but not comprised in Sec. 1. |   | Total relieved out of the Workhouse. |          | RELIEF DISTRICT. | Destitute Persons relieved out of the Workhouse under 10 Vict. c. 31, s. 1. |   | Destitute Persons relieved out of the Workhouse, but not comprised in Sec. 1. |   | Total relieved out of the Workhouse. |          |
|------------------|---|---|---|---|--------------------------------------|----------|------------------|---|---|---|---|--------------------------------------|----------|
|                  | Number of cases relieved.   | Number of Persons, including Applicant and Family, dependent on him or her. | Number of cases relieved.   | Number of Persons, including Applicant and Family, dependent on him or her. | Cases.                               | Persons. |                  | Number of cases relieved.   | Number of Persons, including Applicant and Family, dependent on him or her. | Number of cases relieved.   | Number of Persons, including Applicant and Family, dependent on him or her. | Cases.                               | Persons. |
| No. I.           |   |   |   |   |                                      |          | Bt. forward      |   |   |   |   |                                      |          |
| No. II.          |   |   |   |   |                                      |          | No. X.           |   |   |   |   |                                      |          |
| No. III.         |   |   |   |   |                                      |          | No. XI.          |   |   |   |   |                                      |          |
| No. IV.          |   |   |   |   |                                      |          | No. XII.         |   |   |   |   |                                      |          |
| No. V.           |   |   |   |   |                                      |          | No. XIII.        |   |   |   |   |                                      |          |
| No. VI.          |   |   |   |   |                                      |          | No. XIV.         |   |   |   |   |                                      |          |
| No. VII.         |   |   |   |   |                                      |          | No. XV.          |   |   |   |   |                                      |          |
| No. VIII.        |   |   |   |   |                                      |          | No. XVI.         |   |   |   |   |                                      |          |
| No. IX.          |   |   |   |   |                                      |          | No. XVII.        |   |   |   |   |                                      |          |
| Car. forward     |   |   |   |   |                                      |          | TOTAL,           |   |   |   |   |                                      |          |

COPY of MINUTES of Proceedings of the Board of Guardians, at a Meeting held on the \_\_\_\_\_ day of \_\_\_\_\_ 185

PRESENT: In the Chair,

Other Guardians: *No Minutes. Called by J. M.*

(Signed)

The Minutes of last Meeting were read and Signed.



Notices of Marriage between the parties hereunder named having been received from the District Registrar by the Clerk, were duly read at the Board this day in accordance with the 15th section of the 7 & 8 Vic., c. 81.

The Warehouse Register was produced, examined, and authenticated, from No. \_\_\_\_\_ to No. \_\_\_\_\_, both inclusive, by the signature of the Chairman, and countersignature of the Clerk.

The Out-door Relief Register was produced, examined, and authenticated from No. \_\_\_\_\_ to No. \_\_\_\_\_, inclusive, by the signature of the Chairman and countersignature of the Clerk.

The Clerk's Report on the execution of Orders previously made by the Board was read, to the following effect:

The Ledger was produced by the Clerk, posted up to the last day of Meeting, with the proper Debits and Credits, as ordered on that day.

The Treasurer's Book of Receipts and Payments was produced, by which it appeared that there had been received during the week, - - - - - £40. 2. 11

Paid during the week, - - - - - £32. 18. 3

And that the Balance on the Account the Guardians was - £78. 12. 10

The Book was signed by the Chairman.

The Weekly balance-sheets of the several Collectors were laid before the Board, their accuracy having been first ascertained and authenticated by the Clerk.

The Lodgments made of Rates collected in the several Electoral Divisions appear to have been as follows:—

| Name of each Collector. | Electoral Divisions arranged in Collectors' Districts. | Collected and Lodged. |    |    | Total. |    |    | Remaining. |    |     | Total. |    |     |
|-------------------------|--|-----------------------|----|----|--------|----|----|------------|----|-----|--------|----|-----|
|                         |  | £                     | s. | d. | £      | s. | d. | £          | s. | d.  | £      | s. | d.  |
| Thos Hardiman           | Abraham  | 51                    | 3  | 9  |        |    |    | 35         | 7  | 9   |        |    |     |
|                         | Ballycathlan   | 10                    | 2  | 10 |        |    |    | 60         | 7  | 3   |        |    |     |
|                         | Beagh  | 26                    | 4  | 7  |        |    |    | 37         | 13 | 9½  |        |    |     |
|                         | Burnahou   | 10                    | 9  |    |        |    |    | 42         | 19 | 9   |        |    |     |
|                         | Chahemore  | 20                    | 4  | 9  |        |    |    | 75         | 10 | 6½  |        |    |     |
|                         | Leappud  |                       |    |    |        |    |    | 32         | 5  | 9   |        |    |     |
|                         | Domus  |                       |    |    |        |    |    | 34         | 13 | 3   |        |    |     |
|                         | Lyn  | 3                     | 16 | 3  |        |    |    | 26         | 1  |     |        |    |     |
|                         | Killicarney  |                       |    |    |        |    |    | 51         | 16 |     |        |    |     |
|                         | Killiney   |                       |    |    |        |    |    | 65         | 8  | 5   |        |    |     |
|                         | Kiltarton  |                       |    |    |        |    |    | 101        | 19 | 11  |        |    |     |
| Kilthomas               |  |                       |    |    |        |    | 25 | 12         | 9½ |     |        |    |     |
| Kilwarra                |  |                       |    |    |        |    | 63 | 19         | 1½ |     |        |    |     |
|                         |  |                       |    |    | 115    | 2  | 11 |            |    |     | 855    | 15 | 3½  |
| Michl Taylor            | Abraham  | 4                     | 1  | 7  |        |    |    | 27         | 14 | 6   |        |    |     |
|                         | Cartwagh   | 5                     | 16 | 7  |        |    |    | 48         | 3  |     |        |    |     |
|                         | Raharrah   | 2                     | 16 | 11 |        |    |    | 53         | 10 | 8   |        |    |     |
|                         | Mechanigh  | 12                    | 4  | 11 |        |    |    | 31         | 16 | 2   |        |    |     |
|                         |  |                       |    |    | 26     |    |    |            |    |     | 161    | 14 | 4   |
| Edm Staunton            | Kilmaedagh   |                       |    |    |        |    |    | 84         | 11 | 4   |        |    |     |
|                         | Killeanavanna  |                       |    |    |        |    |    | 25         | 7  | 4   |        |    |     |
|                         | Killicarney  |                       |    |    |        |    |    | 68         | 9  | ¾   |        |    |     |
|                         |  |                       |    |    |        |    |    |            |    |     | 178    | 7  | 5¼  |
|                         |  |                       |    |    | 110    | 2  | 11 |            |    |     | 1228   | 7  | 3½  |
| Arrears of old Rates.   |  |                       |    |    |        |    |    |            |    |     |        |    |     |
| Thos Hardiman           | Kilmaedagh   |                       |    |    |        |    |    | 68         | 6  | 2   |        |    |     |
|                         | Beagh  |                       |    |    |        |    |    | 159        | 10 | 2½  |        |    |     |
|                         | Kiltarton  |                       |    |    |        |    |    | 15         | 10 | 3½  |        |    |     |
|                         | Kilthomas  |                       |    |    |        |    |    | 31         | 17 | 3½  |        |    |     |
| Cornl O'Brien           | KilKeedy   |                       |    |    |        |    |    | 25         | 18 | 3½  | 297    | 2  | 3½  |
|                         | Kilwarra   |                       |    |    |        |    |    | 252        | 4  | ½   | 252    | 11 | ½   |
| Edm Staunton            | Killeanavanna  |                       |    |    |        |    |    | 32         | 15 | ½   | 32     | 15 | ½   |
| Michl Taylor            | Killicarney  |                       |    |    |        |    |    | 70         | 19 | 5½  |        |    |     |
| Edw Shaughrofty         | Abraham  |                       |    |    |        |    |    | 37         | 4  | 10½ | 108    | 11 | 1½  |
|                         | Kilbeacounty   |                       |    |    |        |    |    | 139        | 19 | 11½ | 139    | 19 | 11½ |
|                         |  |                       |    |    |        |    |    |            |    |     | 830    | 5  | 7½  |

NOTE.—A total is to be inserted in Red Ink at the foot of each Collector's District, as well as for the entire Union. Debit the Treasurer and Credit the several Electoral Divisions with the respective amounts lodged.



The Clerk's Account of petty Disbursements made by him since last Meeting, amounting to £ was produced and passed.

The following Books were exhibited by the Clerk, he having first ascertained the accuracy of the entries made therein by the Master of the Workhouse, and authenticated the same by his signature:

1. The Weekly Relief List and Abstract.
2. The Provision Check Accounts.
3. The Provision Receipt and Consumption Account.

By which it appeared that the Cost of Provisions and Necessaries received during the week was £ 19 s. 2 d.

|  |  |    |    |    |
|--|--|----|----|----|
| Debit Provision Account, and Credit Invoice Account.       |  | £  | s. | d. |
| The Cost of Provisions and Necessaries consumed was        |  | 19 | 14 | 2  |
| Debit Maintenance Account, and Credit Provision Account.   |  |    |    |    |
| And the general average Cost of an Inmate for the week was |  | 19 | 16 | 0  |
| Average cost in Infirmary,                                 |  | -  | -  | -  |
| Average cost in Fever Hospital,                            |  | -  | -  | -  |

The Master's estimate of Provisions and Necessaries required for the ensuing week was examined and Orders were duly made for the several articles specified, namely:

The following Books were also produced by the Clerk, their accuracy having been previously ascertained by him, and authenticated by his Signature:

1. The several Clothing Accounts.
2. The Medical Officers' Books.

The Out-door Relief Lists and Weekly Receipt and Expenditure Books of the several Relieving Officers were then produced by the Clerk, their accuracy having been previously ascertained by him, and authenticated by his signature.

The Abstract of the Out-door Relief Lists was also produced by the Clerk, having been duly entered up by him for the last week ended Saturday, the day of ; whereby it appeared that in that week the Total Expenditure in Out-door Relief was

|           |   |   |   |   |
|-----------|---|---|---|---|
| In money, | - | - | - | - |
| In kind,  | - | - | - | - |
| Total,    | - | - | - | - |

Credit each Relieving Officer, as per Receipt and Expenditure Book.

The requirements of each Relieving Officer for the ensuing week having been duly considered and estimated by the Board, checks on the Treasurer and orders on Contractors, were duly signed and delivered to each of them, of the following amounts and value, respectively:

| RELIEF DISTRICT. | Name of Relieving Officer. | By Check on Treasurer.<br>£ s. d. | By Order on Contractors. |                   | RELIEF DISTRICT. | Name of Relieving Officer. | By Check on Treasurer.<br>£ s. d. | By Order on Contractors. |                   |
|------------------|----------------------------|-----------------------------------|--------------------------|-------------------|------------------|----------------------------|-----------------------------------|--------------------------|-------------------|
|                  |                            |                                   | Article and quantity.    | Value.<br>£ s. d. |                  |                            |                                   | Article and quantity.    | Value.<br>£ s. d. |
| No. I.           |                            |                                   |                          |                   | Bt. forward      |                            |                                   |                          |                   |
| No. II.          |                            |                                   |                          |                   | No. X.           |                            |                                   |                          |                   |
| No. III.         |                            |                                   |                          |                   | No. XI.          |                            |                                   |                          |                   |
| No. IV.          |                            |                                   |                          |                   | No. XII.         |                            |                                   |                          |                   |
| No. V.           |                            |                                   |                          |                   | No. XIII.        |                            |                                   |                          |                   |
| No. VI.          |                            |                                   |                          |                   | No. XIV.         |                            |                                   |                          |                   |
| No. VII.         |                            |                                   |                          |                   | No. XV.          |                            |                                   |                          |                   |
| No. VIII.        |                            |                                   |                          |                   | No. XVI.         |                            |                                   |                          |                   |
| No. IX.          |                            |                                   |                          |                   | No. XVII.        |                            |                                   |                          |                   |
| Car. forw'd.     |                            |                                   |                          |                   | TOTAL.           |                            |                                   |                          |                   |

Credit Treasurer with Checks.

Debit each Relieving Officer with Checks and Orders.

On the Report and recommendation of the Finance Committee the following Bills having been duly examined, and found to be correct, and in accordance with the several Orders were directed to be paid, and Checks for the several amounts were duly drawn on the Treasurer and Signed, namely:

1. Clothing Account. £ s. d.

|  |  |  |
|--|--|--|
|  |  |  |
|--|--|--|

Debit Clothing Account and Credit Treasurer with the several sums as above

2. Establishment Account.

|  |  |  |
|--|--|--|
|  |  |  |
|--|--|--|

Debit Establishment Account and Credit Treasurer with the several sums as above



The following Letters on matters arising under the Medical Charities Act or the Nuisances Removal and Diseases Prevention Acts, from the Poor Law Commissioners and others were read by the Clerk, and directions given to answer them respectively, to the following effect (or Orders were made on them respectively as follows:)

Read Letter from \_\_\_\_\_ dated \_\_\_\_\_ stating that \_\_\_\_\_

Galway County Council

(Signed)

Clerk of the Union.

*Gal*

**UNION.**

Population in 1851, *26,287*

Present Net Annual Value, £1153,13.0

STATE of the WORKHOUSE for the Week ending Saturday, the *27<sup>th</sup>* day of *Dec* 185*6*

| Number of Inmates for which accommodation is provided.        | No. that can be accommodated in each building. | Total No. in each building on the above date. | Able-bodied. |           | Aged and Infirm persons, and adult persons, above 15 years of age, but not working. |           | Boys and Girls above 9 and under 15 years of age. |           | Children above 5 and under 9 years of age. | Children above 2 and under 5 years of age. | Infants under 2 years of age. | RETURN OF SICK AND LUNATICS.          |  | OBSERVATIONS.                         |
|---|--|---|--------------|-----------|---|-----------|---|-----------|--|--|-------------------------------|---------------------------------------|--|---------------------------------------|
|   |  |   | Males.       | Fem.      | Males.  | Fem.      | Boys.   | Girls.    |  |  |                               | Number in Hospital on the above date. | No. of Lunatics and Idiots in Workhouse on the above date. |                                       |
| Workhouse, . . . . .  | <i>13003</i>                                   |   |              |           |   |           |   |           |  |  |                               |                                       |  |                                       |
| Temporary Buildings, . . . . .                                | <i>704</i>                                     |   |              |           |   |           |   |           |  |  |                               |                                       |  |                                       |
| Additional Workhouse, . . . . .                               | <i>54</i>                                      | <i>8</i>                                      |              |           |   |           |   |           |  |  |                               |                                       |  |                                       |
| Permanent Fever Hospital, . . . . .                           |  |   |              |           |   |           |   |           |  |  |                               |                                       |  |                                       |
| Fever Sheds, . . . . .  |  |   |              |           |   |           |   |           |  |  |                               |                                       |  |                                       |
| <b>Total, . . . . .</b>                                       | <i>14260</i>                                   | <i>8</i>                                      |              |           |   |           |   |           |  |  |                               |                                       |  |                                       |
| Remaining on previous Saturday, as per last Return, . . . . . |  |   | <i>27</i>    | <i>51</i> | <i>3</i>  | <i>15</i> | <i>25</i>   | <i>73</i> | <i>7</i>                                   | <i>14</i>                                  | <i>13</i>                     | <i>170</i>                            | In Workhouse Hospital, <i>37</i>                           | In separate Wards, <i>8</i>           |
| Admitted during the Week, . . . . .                           |  |   | <i>4</i>     | <i>4</i>  |   |           |   |           |  |  |                               | <i>8</i>                              | In Fever Hospital, <i>8</i>                                | In Wards with other inmates, <i>2</i> |
| <b>TOTAL, . . . . .</b>                                       |  |   | <i>31</i>    | <i>55</i> | <i>3</i>  | <i>15</i> | <i>25</i>   | <i>73</i> | <i>7</i>                                   | <i>14</i>                                  | <i>21</i>                     | <i>178</i>                            | <b>Total, <i>45</i></b>                                    | <b>Total, <i>10</i></b>               |
| Discharged during the Week, . . . . .                         |  |   | <i>3</i>     | <i>1</i>  |   |           |   | <i>2</i>  |  |  |                               | <i>6</i>                              |  |                                       |
| Died, . . . . .   |  |   |              |           |   |           | <i>1</i>  |           |  |  |                               | <i>1</i>                              |  |                                       |
| Total Discharged and Dead, . . . . .                          |  |   | <i>3</i>     | <i>1</i>  |   |           | <i>1</i>  | <i>2</i>  |  |  |                               | <i>7</i>                              |  |                                       |
| REMAINING ON THE ABOVE DATE, . . . . .                        |  |   | <i>28</i>    | <i>52</i> | <i>3</i>  | <i>14</i> | <i>24</i>   | <i>71</i> | <i>7</i>                                   | <i>14</i>                                  | <i>13</i>                     | <i>171</i>                            |  |                                       |

RETURN of DESTITUTE PERSONS relieved out of the Workhouse, as by Relief Lists, for the last Week ended Saturday, the \_\_\_\_\_ day of \_\_\_\_\_ authenticated and laid before the Board of Guardians at this Meeting.

| RELIEF DISTRICT. | Destitute Persons relieved out of the Workhouse, but under 10 Vict. c. 31, s. 1. |   | Destitute Persons relieved out of the Workhouse, but not comprised in Sec. 1. |   | Total relieved out of the Workhouse. |          | RELIEF DISTRICT. | Destitute Persons relieved out of the Workhouse, but under 10 Vict. c. 31, s. 1. |   | Destitute Persons relieved out of the Workhouse, but not comprised in Sec. 1. |   | Total relieved out of the Workhouse. |          |
|------------------|--|---|---|---|--------------------------------------|----------|------------------|--|---|---|---|--------------------------------------|----------|
|                  | Number of cases relieved.  | Number of Persons, including Applicant and Family, dependent on him or her. | Number of cases relieved.   | Number of Persons, including Applicant and Family, dependent on him or her. | Cases.                               | Persons. |                  | Number of cases relieved.  | Number of Persons, including Applicant and Family, dependent on him or her. | Number of cases relieved.   | Number of Persons, including Applicant and Family, dependent on him or her. | Cases.                               | Persons. |
| No. I.           |  |   |   |   |                                      |          | Bt. forward      |  |   |   |   |                                      |          |
| No. II.          |  |   |   |   |                                      |          | No. X.           |  |   |   |   |                                      |          |
| No. III.         |  |   |   |   |                                      |          | No. XI.          |  |   |   |   |                                      |          |
| No. IV.          |  |   |   |   |                                      |          | No. XII.         |  |   |   |   |                                      |          |
| No. V.           |  |   |   |   |                                      |          | No. XIII.        |  |   |   |   |                                      |          |
| No. VI.          |  |   |   |   |                                      |          | No. XIV.         |  |   |   |   |                                      |          |
| No. VII.         |  |   |   |   |                                      |          | No. XV.          |  |   |   |   |                                      |          |
| No. VIII.        |  |   |   |   |                                      |          | No. XVI.         |  |   |   |   |                                      |          |
| No. IX.          |  |   |   |   |                                      |          | No. XVII.        |  |   |   |   |                                      |          |
| Car. forward     |  |   |   |   |                                      |          | TOTAL,           |  |   |   |   |                                      |          |

COPY of MINUTES of Proceedings of the Board of Guardians, at a Meeting held on *Thursday* the *first* day of *January* 185*7*

PRESENT: In the Chair, *James Cahill*  
 Other Guardians: *Henry Cahill, P. Fitzpatrick, Capt Taylor, Pad Burke, Michael Boyle, John Borden, Michael Clouston, John Conroy, Michael Milne, John Harty*

The Minutes of last Meeting were read and Signed.







The Clerk's Account of petty Disbursements made by him since last Meeting, amounting to £ was produced and passed.

The following Books were exhibited by the Clerk, he having first ascertained the accuracy of the entries made therein by the Master of the Workhouse, and authenticated the same by his signature:

1. The Weekly Relief List and Abstract.
2. The Provision Check Accounts.
3. The Provision Receipt and Consumption Account.

By which it appeared that the Cost of Provisions and Necessaries received during the week was £25. 10 s. 11d.

|  |                                 |
|--|---------------------------------|
| Debit Provision Account, and Credit Invoice Account.       | £ s. d.                         |
| The Cost of Provisions and Necessaries consumed was        | 25. 10. 11                      |
| Debit Maintenance Account, and Credit Provision Account.   |                                 |
| And the general average Cost of an Inmate for the week was | 24. 1. 7                        |
| Average cost in Infirmary,                                 | 24. 1. 7                        |
| Average cost in Fever Hospital,                            | 2/0 <sup>3</sup> / <sub>4</sub> |
|  | 2/9 <sup>1</sup> / <sub>4</sub> |
|  | 3/5                             |

The Master's estimate of Provisions and Necessaries required for the ensuing week was examined and Orders were duly made for the several articles specified, namely:

480 lbs Bread  
 64 .. Meal  
 540 qts New Milk  
 1 last Oall  
 64 1/3 Tea  
 21 lbs Sugar  
 2 .. Potash  
 2 .. Moulds

6 lbs Kin  
 3 pints Whiskey  
 1 lb pepper  
 3 bottles porter  
 49 Borneo Soap  
 2 Boxes Calico

The following Books were also produced by the Clerk, their accuracy having been previously ascertained by him, and authenticated by his signature:

1. The several Clothing Accounts.
2. The Medical Officers' Books.

The Out-door Relief Lists and Weekly Receipt and Expenditure Books of the several Relieving Officers were then produced by the Clerk, their accuracy having been previously ascertained by him, and authenticated by his signature.

The Abstract of the Out-door Relief Lists was also produced by the Clerk, having been duly entered up by him for the last week ended Saturday, the day of ; whereby it appeared that in that week the Total Expenditure in Out-door Relief was

|          |         |
|----------|---------|
| In money | £ s. d. |
| In kind  | -       |
| Total    | -       |

Credit each Relieving Officer, as per Receipt and Expenditure Book.

The requirements of each Relieving Officer for the ensuing week having been duly considered and estimated by the Board, checks on the Treasurer and orders on Contractors, were duly signed and delivered to each of them, of the following amounts and value, respectively:

| RELIEF DISTRICT. | Name of Relieving Officer. | By Check on Treasurer. |       | By Order on Contractors. |                | RELIEF DISTRICT. | Name of Relieving Officer. | By Check on Treasurer. |                | By Order on Contractors. |  |
|------------------|----------------------------|------------------------|-------|--------------------------|----------------|------------------|----------------------------|------------------------|----------------|--------------------------|--|
|                  |                            | £                      | s. d. | Article and quantity.    | Value. £ s. d. |                  |                            | Article and quantity.  | Value. £ s. d. |                          |  |
| No. I.           |                            |                        |       |                          |                | Bt. forward      |                            |                        |                |                          |  |
| No. II.          |                            |                        |       |                          |                | No. X.           |                            |                        |                |                          |  |
| No. III.         |                            |                        |       |                          |                | No. XI.          |                            |                        |                |                          |  |
| No. IV.          |                            |                        |       |                          |                | No. XII.         |                            |                        |                |                          |  |
| No. V.           |                            |                        |       |                          |                | No. XIII.        |                            |                        |                |                          |  |
| No. VI.          |                            |                        |       |                          |                | No. XIV.         |                            |                        |                |                          |  |
| No. VII.         |                            |                        |       |                          |                | No. XV.          |                            |                        |                |                          |  |
| No. VIII.        |                            |                        |       |                          |                | No. XVI.         |                            |                        |                |                          |  |
| No. IX.          |                            |                        |       |                          |                | No. XVII.        |                            |                        |                |                          |  |
| Car. fwd.        |                            |                        |       |                          |                | TOTAL.           |                            |                        |                |                          |  |

Credit Treasurer with Checks.

Debit each Relieving Officer with Checks and Orders.

On the Report and recommendation of the Finance Committee the following Bills having been duly examined, and found to be correct, and in accordance with the several Orders were directed to be paid, and Checks for the several amounts were duly drawn on the Treasurer and Signed, namely:

1. Clothing Account.

|  |         |
|--|---------|
|  | £ s. d. |
|  | -       |

Debit Clothing Account and Credit Treasurer with the several sums as above

2. Establishment Account.

|   |        |
|---|--------|
| Martin Molau Calane Salary                | 10 . . |
| James Latorp Calay to 25 Dec <sup>r</sup> | 25 . . |
| Dean Birmingham 1/4 Calay do              | 2 10 . |
| E Kennedy repairs locks &c                | 2 . .  |
| James Gile Calay to 25 Dec <sup>r</sup>   | 5 7 10 |
| James Latorp to pay Petit Bills           | 2 13 2 |

Debit Establishment Account and Credit Treasurer with the several sums as above



3. Warehouse Invoice Account.

|  | £ | s. | d. |
|--|---|----|----|
| Martin Kennedy for candles, to 25 Decr | 3 | 4  | 2  |

Debit Warehouse Invoice Account and Credit Treasurer with the several sums as above.

4. Out-door Relief Invoice Account.

|  | £ | s. | d. |
|--|---|----|----|
|  |   |    |    |

Credit Treasurer and Debit Out-door Relief Invoice Account with the several sums as above.

The Clerk's Report of Vaccination was read — this on the first meeting in every month. — Number of successful cases.

The Report of the Visiting Committee was read, and Orders were made thereon as follows:

The Reports of the Master and other Officers were read and Orders made thereon as follows:

The Medical Officer reports the general health of the Annals remains satisfactory —



The following Orders of the Poor Law Commissioners were laid before the Board, and directions given thereon, as follows

Sealed Order of London Commissioners, dated 24 December 1836, N<sup>o</sup> 32,538 sanctioning the expenditure of Eight pounds to assist in the occupation of Misses Cannon & Family at Boston.

Sealed Order of same 20<sup>th</sup> December, N<sup>o</sup> 31,571 fixing the Medical Officers salary for the Workhouse at Sixty pounds a year.

The following Letters from the Poor Law Commissioners and others were read by the Clerk, and directions given to answer them respectively, to the following effect, as Orders made on them respectively as follows:

Letter from Poor Law Comm<sup>rs</sup> 24 December, 1836, N<sup>o</sup> 32,204. Drawing the attention of the Board to repairs wanted in the Laundry Chimney and also in the Wall of the House as appears by D. Proctor's report. The Commissioners are informed the lead flashing is repaired and the Chimney pots are in course of repair.

Galway

The following letter has received from the Board of National Education  
Education Office  
December 23 1836

Sir

We forward for the information of the Board of Guardians the following extracts from the ~~Annual~~ Inspector's report on the 10<sup>th</sup> inst on the Gal Poor Law Union National School.

"Michael Meils literary qualifications and his mode of conducting the school are satisfactory

"Literary instruction is on the whole fairly attended to by the English Teachers.

Clerk of Union  
Gal

We are Sir  
Yr Obedt Servant  
Maurice Cross  
James Kelly Sec







Andrew Hordie was appointed Relieving officer for  
God District at a salary of £12.10.0 per annum

John Burke was appointed schoolmaster  
at a salary of £15 a year with apartment  
and station —

The Board agreed to increase Martin Cahill  
Relieving officer's salary from £10.0.0 to £12.10  
per annum

Next Meeting of the Guardians to be held on \_\_\_\_\_ the  
day of \_\_\_\_\_ 185 .

(Signed) \_\_\_\_\_  
Clerk of the Union.

Galway County Council Archives



The following Accounts of Expenses, (or Statement of Salaries due as the case may be,) under the Medical Charities Act, were laid before the Board, and Directions were given for Payment thereof (or such other directions as may be given:)

*GM*  
 Dispensary District,  
 Account of Mr. *A. Nolan* for *Salary* : Amount £ 17. 10. 0

*Palluaencee*      *Leanne Gile Salary*      5. 8. 4  
                          *Patrick Laaffe Salary*      5. 4. 2

An Account of the Expenses incurred for the service of each Dispensary District in the Union, for the half-year ended 185 , having been submitted to the Board, the Clerk was directed to furnish to the Committee of each Dispensary District a statement of all the Expenses of the District which have been included in the half-year's accounts. The following is the total Expense incurred for each Dispensary District for the half-year ended 185 .

|                |       |   |
|----------------|-------|---|
| _____ District | ..... | £ |
| _____ District | ..... | £ |

[This at the end of each half-year, in pursuance of Articles 28 and 29 of the General Rules for Dispensary Districts, dated 16th December, 1853.]

Galway County Council Archive

[This to be entered on the occasion of every appointment of a new Committee, after the annual Election of Guardians, and on the occasion of any election to fill any vacancies in a Dispensary Comm.tee].

The Board elected the following Rate-payers to be Members of the Committees of Management of the following Dispensary Districts, respectively:—the Clerk to make a Return accordingly to the Poor Law Commissioners, and to issue the prescribed Notification to the Members elected, and to the Medical Officers of the respective Dispensary Districts in pursuance of Articles 1, 2, and 3 of the General Regulations for Dispensary Districts.—The Clerk was also directed to supply Check Books of Medical Relief Tickets, (Forms E, and E 2,) in pursuance of Article 27 of the Dispensary Regulations, to the new Members of the Committees; namely:—

\_\_\_\_\_ Dispensary District, Mr. \_\_\_\_\_ of \_\_\_\_\_

The following Orders of the Poor Law Commissioners under the Medical Charities Act were laid before the Board and directions given thereon as follows:

Order dated \_\_\_\_\_ (state subject)



The following Letters on matters arising under the Medical Charities Act or the Nuisances Removal and Diseases Prevention Acts, from the Poor Law Commissioners and others were read by the Clerk, and directions given to answer them respectively, to the following effect (or Orders were made on them respectively as follows:)

Read Letter from \_\_\_\_\_ dated \_\_\_\_\_ stating that

(Signed)

Clerk of the Union.

Population in 1851, 26287

Present Net Annual Value, £4033.13.

STATE of the WORKHOUSE for the Week ending Saturday, the

3<sup>rd</sup> day of January 1857

| Number of Inmates for which accommodation is provided.        | No. that can be accommodated in each building. | Total No. in each building on the above date. | Able-bodied. |      | Aged and Infirm persons, above 15 years of age, but not working. |      | Boys and Girls above 9 and under 15 years of age. |        | Children above 5 and under 9 years of age. | Children above 2 and under 5 years of age. | Infants under 2 years of age. | RETURN OF SICK AND LUNATICS.          |  | OBSERVATIONS.                  |
|---|--|---|--------------|------|--|------|---|--------|--|--|-------------------------------|---------------------------------------|--|--------------------------------|
|   |  |   | Males.       | Fem. | Males.   | Fem. | Boys.   | Girls. |  |  |                               | Number in Hospital on the above date. | No. of Lunatics and Idiots in Workhouse on the above date. |                                |
| Workhouse, . . . . .  | 115  | 168   |              |      |  |      |   |        |  |  |                               |                                       |  |                                |
| Temporary Buildings, . . . . .                                | 70   |   |              |      |  |      |   |        |  |  |                               |                                       |  |                                |
| Additional Workhouse, . . . . .                               | 56   | 11  |              |      |  |      |   |        |  |  |                               |                                       |  |                                |
| Permanent Fever Hospital, . . . . .                           |  |   |              |      |  |      |   |        |  |  |                               |                                       |  |                                |
| Fever Sheds, . . . . .  |  |   |              |      |  |      |   |        |  |  |                               |                                       |  |                                |
| Total, . . . . .  | 141  | 179   |              |      |  |      |   |        |  |  |                               |                                       |  |                                |
| Remaining on previous Saturday, as per last Return, . . . . . |  |   | 28           | 31   | 5  | 14   | 25  | 11     | 7  | 14   | 13                            | 171                                   | In Work-house Hospital, 111                                | In separate Wards, 2           |
| Admitted during the Week, . . . . .                           |  |   | 2            | 9    |  |      |   |        |  | 1  | 1                             | 13                                    | In Fever Hospital, 11                                      | In Wards with other Inmates, 2 |
| TOTAL, . . . . .  |  |   | 30           | 40   | 5  | 14   | 25  | 11     | 7  | 15   | 14                            | 184                                   | Total, 53  | Total, 2                       |
| Discharged during the Week, . . . . .                         |  |   |              | 3    |  |      |   |        |  |  |                               | 14                                    |  |                                |
| Died, . . . . .   |  |   |              |      |  | 1    |   |        |  |  |                               | 1                                     |  |                                |
| Total Discharged and Dead, . . . . .                          |  |   |              | 3    |  | 1    |   |        |  |  |                               | 15                                    |  |                                |
| REMAINING ON THE ABOVE DATE, . . . . .                        |  |   | 30           | 60   | 5  | 13   | 25  | 11     | 7  | 15   | 13                            | 179                                   |  |                                |

RETURN of DESTITUTE PERSONS relieved out of the Workhouse, as by Relief Lists, for the last Week ended Saturday, the \_\_\_\_\_ day of \_\_\_\_\_ authenticated and laid before the Board of Guardians at this Meeting.

| RELIEF DISTRICT. | Destitute Persons relieved out of the Workhouse under 10 Vict. c. 31, s. 1. |   | Destitute Persons relieved out of the Workhouse, but not comprised in Sec. 1. |   | Total relieved out of the Workhouse. |          | RELIEF DISTRICT. | Destitute Persons relieved out of the Workhouse under 10 Vict. c. 31, s. 1. |   | Destitute Persons relieved out of the Workhouse, but not comprised in Sec. 1. |   | Total relieved out of the Workhouse. |          |
|------------------|---|---|---|---|--------------------------------------|----------|------------------|---|---|---|---|--------------------------------------|----------|
|                  | Number of cases relieved.   | Number of Persons, including Applicant and Family, dependent on him or her. | Number of cases relieved.   | Number of Persons, including Applicant and Family, dependent on him or her. | Cases.                               | Persons. |                  | Number of cases relieved.   | Number of Persons, including Applicant and Family, dependent on him or her. | Number of cases relieved.   | Number of Persons, including Applicant and Family, dependent on him or her. | Cases.                               | Persons. |
| No. I.           |   |   |   |   |                                      |          | Et. forward      |   |   |   |   |                                      |          |
| No. II.          |   |   |   |   |                                      |          | No. X.           |   |   |   |   |                                      |          |
| No. III.         |   |   |   |   |                                      |          | No. XI.          |   |   |   |   |                                      |          |
| No. IV.          |   |   |   |   |                                      |          | No. XII.         |   |   |   |   |                                      |          |
| No. V.           |   |   |   |   |                                      |          | No. XIII.        |   |   |   |   |                                      |          |
| No. VI.          |   |   |   |   |                                      |          | No. XIV.         |   |   |   |   |                                      |          |
| No. VII.         |   |   |   |   |                                      |          | No. XV.          |   |   |   |   |                                      |          |
| No. VIII.        |   |   |   |   |                                      |          | No. XVI.         |   |   |   |   |                                      |          |
| No. IX.          |   |   |   |   |                                      |          | No. XVII.        |   |   |   |   |                                      |          |
| Car. forward     |   |   |   |   |                                      |          | TOTAL.           |   |   |   |   |                                      |          |

COPY of MINUTES of Proceedings of the Board of Guardians, at a Meeting held on \_\_\_\_\_ day of \_\_\_\_\_ 1857

PRESENT: In the Chair, John Martyn  
 Other Guardians: D. Mulvihill, Henry Blaywire, Pat Burke, John Forrest, John Brodie, J. S. J., John Brodie & Co.

The Minutes of last Meeting were read and Signed.



Notices of Marriage between the parties hereunder named having been received from the District Registrar by the Clerk, were duly read at the Board this day in accordance with the 15th section of the 7 & 8 Vic., c. 81.

The Workhouse Register was produced, examined, and authenticated, from No. 1982 to No. 1999 both inclusive, by the signature of the Chairman, and countersignature of the Clerk.

The Out-door Relief Register was produced, examined, and authenticated from No. \_\_\_\_\_ to No. \_\_\_\_\_, inclusive, by the signature of the Chairman and countersignature of the Clerk.

The Clerk's Report on the execution of Orders previously made by the Board was read, to the following effect:

The Ledger was produced by the Clerk, posted up to the last day of Meeting, with the proper Debits and Credits, as ordered on that day.

The Treasurer's Book of Receipts and Payments was produced, by which it appeared that there had been received during the week, - - - - - £85.5.8

Paid during the week, - - - - - £37.6.0

And that the Balance on the Account in favour of the Guardians was - £268.7.0

The Book was signed by the Chairman.

The Weekly balance-sheets of the several Collectors were laid before the Board, their accuracy having been first ascertained and authenticated by the Clerk.

The Ledgers made of Rates collected in the several Electoral Divisions appear to have been as follows:—

| Name of each Collector. | Electoral Divisions arranged in Collectors' Districts. | Collected and Lodged. |    |    | Total. |    |    | Remaining. |    |    | Total. |    |    |
|-------------------------|--|-----------------------|----|----|--------|----|----|------------|----|----|--------|----|----|
|                         |  | £                     | s. | d. | £      | s. | d. | £          | s. | d. | £      | s. | d. |
| Thomas Hardiman         | Adamstown  | 5                     | 8  | 9  |        |    |    | 29         | 19 |    |        |    |    |
|                         | Ballycubalau   |                       |    |    |        |    |    | 10         | 7  | 3  |        |    |    |
|                         | Brough   | 11                    | 5  | 3  |        |    |    | 19         | 8  | 2  |        |    |    |
|                         | Burnahow   | 2                     | 2  | 3  |        |    |    | 40         | 17 | 6  |        |    |    |
|                         | Clashmal   | 4                     | 8  | 3  |        |    |    | 71         | 2  | 3  |        |    |    |
|                         | Leppard  | 2                     | 8  | 10 |        |    |    | 29         | 18 | 11 |        |    |    |
|                         | Donus  | 4                     | 15 | 3  |        |    |    | 29         | 18 |    |        |    |    |
|                         | God  | 98                    | 4  | 1  |        |    |    | 182        | 16 | 11 |        |    |    |
|                         | Killicrauly  | 6                     | 9  | 11 |        |    |    | 48         | 6  | 1  |        |    |    |
|                         | Killinny   |                       |    |    |        |    |    | 65         | 8  | 5  |        |    |    |
|                         | Kiltartan  | 11                    | 2  | 11 |        |    |    | 97         | 17 |    |        |    |    |
| Kiltomas                |  |                       |    |    |        |    | 25 | 12         | 9  |    |        |    |    |
| Shivara                 |  |                       |    |    |        |    | 13 | 19         | 1  |    |        |    |    |
|                         |  |                       |    |    | 146    | 5  | 8  |            |    |    | 74     | 2  | 9  |
| Michael Taylor          | Adrahau  |                       |    | 14 |        |    |    | 27         |    | 5  |        |    |    |
|                         | Castle Taylor  | 1                     | 3  | 7  |        |    |    | 46         | 19 | 5  |        |    |    |
|                         | Raharau  |                       |    |    |        |    |    | 53         | 10 | 8  |        |    |    |
|                         | Shivara  | 8                     | 2  | 4  |        |    |    | 23         | 13 | 10 |        |    |    |
|                         |  |                       |    |    | 10     |    |    |            |    |    | 151    | 4  | 4  |
| Edward Stanton          | Brunnaw  | 5                     | 2  | 11 |        |    |    | 79         | 8  | 5  |        |    |    |
|                         | Killawarr  | 19                    | 15 | 7  |        |    |    | 5          | 11 | 8  |        |    |    |
|                         | Killy  | 4                     | 1  | 5  |        |    |    | 40         | 7  | 6  |        |    |    |
|                         |  |                       |    |    | 29     |    |    |            |    |    | 149    | 7  | 8  |
|                         | Total  |                       |    |    | 183    | 5  | 6  |            |    |    | 1043   | 1  | 7  |
| Mr Hardman              | Kilmaragh  |                       |    |    |        |    |    | 64         | 6  | 2  |        |    |    |
|                         | Brough   |                       |    |    |        |    |    | 159        | 10 | 2  |        |    |    |
|                         | Kiltartan  |                       |    |    |        |    |    | 157        | 0  | 3  |        |    |    |
|                         | Kiltomas   |                       |    |    |        |    |    | 31         | 7  | 3  |        |    |    |
|                         | Killy  |                       |    |    |        |    |    | 25         | 8  | 3  |        |    |    |
|                         |  |                       |    |    |        |    |    | 297        | 28 | 2  |        |    |    |
| Conrad O'Brien          | Shivara  |                       |    |    |        |    |    | 252        | 4  |    |        |    |    |
| Edward Stanton          | Killawarr  |                       |    |    |        |    |    | 32         | 15 | 2  |        |    |    |
| Michael Taylor          | Killawarr  |                       |    |    |        |    |    | 70         | 19 | 5  |        |    |    |
| E. O'Shaughnessy        | Adrahau  |                       |    |    |        |    |    | 37         | 4  | 0  |        |    |    |
|                         | Killicrauly  |                       |    |    |        |    |    | 139        | 19 | 1  |        |    |    |
|                         |  |                       |    |    |        |    |    |            |    |    | 830    | 5  | 7  |

NOTE.—A total is to be inserted in Red Ink at the foot of each Collector's District, as well as for the entire Union. Debit the Treasurer and Credit the several Electoral Divisions with the respective amounts lodged.



The Clerk's Account of petty Disbursements made by him since last Meeting, amounting to £ was produced and passed.

The following Books were exhibited by the Clerk, he having first ascertained the accuracy of the entries made therein by the Master of the Workhouse, and authenticated the same by his signature:

1. The Weekly Relief List and Abstract.
2. The Provision Check Accounts.
3. The Provision Receipt and Consumption Account.

By which it appeared that the Cost of Provisions and Necessaries received during the week, was £14. 14s. 11d.

|  | £                              | s.  | d. |
|--|--------------------------------|-----|----|
| Debit Provision Account, and Credit Invoice Account.         | 14.                            | 14. | 11 |
| The Cost of Provisions and Necessaries consumed was -        | 21.                            | 1.  | 6  |
| Debit Maintenance Account, and Credit Provision Account.     | 21.                            | 1.  | 6  |
| And the general average Cost of an Inmate for the week was - | 20 <sup>3</sup> / <sub>4</sub> |     |    |
| Average cost in Infirmary, - - - - -                         | 21 <sup>1</sup> / <sub>4</sub> |     |    |
| Average cost in Fever Hospital, - - - - -                    | 32                             |     |    |

The Master's estimate of Provisions and Necessaries required for the ensuing week was examined and Orders were duly made for the several articles specified, namely:

|                     |                  |
|---------------------|------------------|
| 300 lbs Bread       | 6 lbs Rice       |
| 62 " Meal           | 1 " Pepper       |
| 1/2 Ton Lyddon Meal | 1 Bottle Vine    |
| 1/4 " Rye Meal      | 1/2 pint Whisky  |
| 1/4 " Barley Meal   | 3 Bottles porter |
| 580 qrs Oat Brisk   | 1/2 Busel Soap   |
| 1 bush Oat          | 1 box Candles    |
| 60 lbs Tea          | 1 lb Sugar       |
| 114 lbs Sugar       |                  |

The following Books were also produced by the Clerk, their accuracy having been previously ascertained by him, and authenticated by his signature:

1. The several Clothing Accounts.
2. The Medical Officers' Books.

The Out-door Relief Lists and Weekly Receipt and Expenditure Books of the several Relieving Officers were then produced by the Clerk, their accuracy having been previously ascertained by him, and authenticated by his signature.

The Abstract of the Out-door Relief Lists was also produced by the Clerk, having been duly entered up by him for the last week ended Saturday, the day of ; whereby it appeared that in that week the Total Expenditure in Out-door Relief was

|                     | £ | s. | d. |
|---------------------|---|----|----|
| In money, - - - - - |   |    |    |
| In kind, - - - - -  |   |    |    |
| Total, - - - - -    |   |    |    |

Credit each Relieving Officer, as per Receipt and Expenditure Book.

The requirements of each Relieving Officer for the ensuing week having been duly considered and estimated by the Board, checks on the Treasurer and orders on Contractors, were duly signed and delivered to each of them, of the following amounts and value, respectively:

| RELIEF DISTRICT. | Name of Relieving Officer. | By Check on Treasurer.<br>£ s. d. | By Order on Contractors. |                   | RELIEF DISTRICT. | Name of Relieving Officer. | By Check on Treasurer.<br>£ s. d. | By Order on Contractors. |                   |
|------------------|----------------------------|-----------------------------------|--------------------------|-------------------|------------------|----------------------------|-----------------------------------|--------------------------|-------------------|
|                  |                            |                                   | Article and quantity.    | Value.<br>£ s. d. |                  |                            |                                   | Article and quantity.    | Value.<br>£ s. d. |
| No. I.           |                            |                                   |                          |                   | Bt. forward      |                            |                                   |                          |                   |
| No. II.          |                            |                                   |                          |                   | No. X.           |                            |                                   |                          |                   |
| No. III.         |                            |                                   |                          |                   | No. XI.          |                            |                                   |                          |                   |
| No. IV.          |                            |                                   |                          |                   | No. XII.         |                            |                                   |                          |                   |
| No. V.           |                            |                                   |                          |                   | No. XIII.        |                            |                                   |                          |                   |
| No. VI.          |                            |                                   |                          |                   | No. XIV.         |                            |                                   |                          |                   |
| No. VII.         |                            |                                   |                          |                   | No. XV.          |                            |                                   |                          |                   |
| No. VIII.        |                            |                                   |                          |                   | No. XVI.         |                            |                                   |                          |                   |
| No. IX.          |                            |                                   |                          |                   | No. XVII.        |                            |                                   |                          |                   |
| Cat. forwd.      |                            |                                   |                          |                   | TOTAL,           |                            |                                   |                          |                   |

Credit Treasurer with Checks.

Debit each Relieving Officer with Checks and Orders.

On the Report and recommendation of the Finance Committee the following Bills having been duly examined, and found to be correct, and in accordance with the several Orders were directed to be paid, and Checks for the several amounts were duly drawn on the Treasurer and Signed, namely:

1. Clothing Account.

£ s. d.

Debit Clothing Account and Credit Treasurer with the several sums as above

2. Establishment Account.

|                                    |   |    |   |
|------------------------------------|---|----|---|
| Patent Book Mount Cemetery Long St | 7 | 19 | 6 |
| Ann, Hator copy Pitt Bills         | 1 | 1  | 6 |

Debit Establishment Account and Credit Treasurer with the several sums as above



3. Workhouse Invoice Account.

Thomas Callinan for Conf

£ 3 s 11 d

Debit Workhouse Invoice Account and Credit Treasurer with the several sums as above.

4. Out-door Relief Invoice Account.

£ s d

Credit Treasurer and Debit Out-door Relief Invoice Account with the several sums as above.

The Clerk's Report of Vaccination was read - (this on the first meeting in every month.) - Number of successful cases.

The Report of the Visiting Committee was read, and Orders were made thereon as follows:

The following cheques were entered

|                                      |           |
|--------------------------------------|-----------|
| William David Andrews                | 5. 19. 6  |
| Denis Hughes salary to 25 Dec 1836   | 17. 10. 0 |
| Daniel D. ... do                     | 2. 10. 0  |
| Patrick ... do                       | 2. 10. 0  |
| Edward Stanton on postage do         | 1. 16. 0  |
| Patrick ... do                       | 26. 3. 2  |
| Henry Griffin for flagging to 25 Dec | 1. 5. 0   |

Or Treasurer  
D. Unpaid Bills

The Reports of the Master and other Officers were read and Orders made thereon as follows:



The following Orders of the Poor Law Commissioners were laid before the Board, and directions given thereon, as follows

The following Letters from the Poor Law Commissioners and others were read by the Clerk, and directions given to answer them respectively, to the following effect, or Orders made on them respectively as follows:—

Letter from Poor Law Commissioners  
7<sup>th</sup> January No. 241. 1837 stating that  
the proceedings giving an increase of salary  
to Mr. John Culhan Relieving officer without  
fourteen days notice have been informal —

Letter from same 7<sup>th</sup> January No. 32.565. 1837  
requesting that the Guardians should in  
accordance with their letter of the 17<sup>th</sup> Oct  
require an explanation for coming from  
the Medical Officer with regard to the  
irregularities in the Surgery as reported by Dr.  
Brodie, and requesting to be furnished with  
a copy of said explanation —

Ordered that Dr. Nolan give an explanation  
in writing with regard to the above.

Council Archives



The cases of provisional relief, and applications for relief were considered and decided on, as set forth in the Application and Report Books.

The number of provisional admissions to the Workhouse confirmed was

Ditto disallowed

The number of applicants admitted to the Workhouse was

The number of cases of provisional Out-door relief was

Do. do. in which relief was continued by the Guardians

The number of other applicants in the Relieving Officers' Books relieved by order of the Guardians was

The number of applicants for whom relief was not granted

The Bonds and other securities in force were laid before the Guardians by the Clerk, together with his Report thereon, as follows: (this on the second Meeting after the Annual Election in every year.)

The Lodgments made of Rates collected in the several Electoral Divisions appear as follows:—

| Name of each Collector. | Electoral Divisions arranged in Collectors' Districts. | Collected and Lodged. |    |    | Total. |    |    | Remaining. |    |    | Total. |    |              |
|-------------------------|--|-----------------------|----|----|--------|----|----|------------|----|----|--------|----|--------------|
|                         |  | £                     | s. | d. | £      | s. | d. | £          | s. | d. | £      | s. | d.           |
| The Hardiman            | Armagh   |                       |    |    |        |    |    |            |    |    |        |    |              |
|                         | Ballycathlic   |                       |    |    |        |    |    |            |    |    |        |    |              |
|                         | Beagh  |                       |    |    |        |    |    |            |    |    |        |    |              |
|                         | Blinagh  |                       |    |    |        |    |    |            |    |    |        |    |              |
|                         | Castlemore   |                       |    |    |        |    |    |            |    |    |        |    |              |
|                         | Clappard   |                       |    |    |        |    |    |            |    |    |        |    |              |
|                         | Down   |                       |    |    |        |    |    |            |    |    |        |    |              |
|                         | Gen  |                       |    |    |        |    |    |            |    |    |        |    |              |
|                         | Killmacarty  |                       |    |    |        |    |    |            |    |    |        |    |              |
|                         | Killinny   |                       |    |    |        |    |    |            |    |    |        |    |              |
|                         | Kittaton   |                       |    |    |        |    |    |            |    |    |        |    |              |
| Kilthomas               |  |                       |    |    |        |    |    |            |    |    |        |    |              |
| Quinn                   |  |                       |    |    |        |    |    |            |    |    |        |    |              |
|                         |  |                       |    |    |        |    |    |            |    |    |        |    | 742 9 7 1/2  |
| Michael Taylor          | Ararahan   |                       |    |    |        |    |    |            |    |    |        |    |              |
|                         | Coote Taylor   |                       |    |    |        |    |    |            |    |    |        |    |              |
|                         | Robarney   |                       |    |    |        |    |    |            |    |    |        |    |              |
|                         | McHaragh   |                       |    |    |        |    |    |            |    |    |        |    |              |
|                         |  |                       |    |    |        |    |    |            |    |    |        |    | 157 4 4      |
| Thomas Stanton          | Ararahan   |                       |    |    |        |    |    |            |    |    |        |    |              |
|                         | Killmacarty  |                       |    |    |        |    |    |            |    |    |        |    |              |
|                         | Killully   |                       |    |    |        |    |    |            |    |    |        |    |              |
|                         |  |                       |    |    |        |    |    |            |    |    |        |    | 149 7 6 1/2  |
|                         |  |                       |    |    |        |    |    |            |    |    |        |    | 1043 1 7 1/2 |
| The Hardiman            | Kilwardough  |                       |    |    |        |    |    |            |    |    |        |    |              |
|                         | Beagh  |                       |    |    |        |    |    |            |    |    |        |    |              |
|                         | Kittaton   |                       |    |    |        |    |    |            |    |    |        |    |              |
|                         | Kilthomas  |                       |    |    |        |    |    |            |    |    |        |    |              |
|                         | Killreehy  |                       |    |    |        |    |    |            |    |    |        |    |              |
| Samuel O'Brien          | Quinn  |                       |    |    |        |    |    |            |    |    |        |    |              |
|                         | Killmacarty  |                       |    |    |        |    |    |            |    |    |        |    |              |
| Edmond Stanton          | Killmacarty  |                       |    |    |        |    |    |            |    |    |        |    |              |
|                         | Killmacarty  |                       |    |    |        |    |    |            |    |    |        |    |              |
| Michael Taylor          | Killmacarty  |                       |    |    |        |    |    |            |    |    |        |    |              |
|                         | Ararahan   |                       |    |    |        |    |    |            |    |    |        |    |              |
| E. Haynes               | Killmacarty  |                       |    |    |        |    |    |            |    |    |        |    |              |
|                         | Killmacarty  |                       |    |    |        |    |    |            |    |    |        |    |              |
|                         |  |                       |    |    |        |    |    |            |    |    |        |    | 831 5 1/2    |

NOTE.—A total is to be inserted in Red Ink at the foot of each Collector's District, as well as for the entire Union. Debit the Treasurer and Credit the several Electoral Divisions with the respective amounts lodged.



The Clerk's Account of petty Disbursements made by him since last Meeting, amounting to £

The following Books were exhibited by the Clerk, he having first ascertained the accuracy of the entries made therein by the Master of the Workhouse, and authenticated the same by his signature:

1. The Weekly Relief List and Abstract.
2. The Provision Check Accounts.
3. The Provision Receipt and Consumption Account.

By which it appeared that the Cost of Provisions and Necessaries received during the week, was £ 20. 2s. 5d.

Debit Provision Account, and Credit Invoice Account.

The Cost of Provisions and Necessaries consumed was - - - £ 20. 2. 5

Debit Maintenance Account, and Credit Provision Account.

And the general average Cost of an Inmate for the week was - - - 21. 9. 5

Average cost in Infirmary, - - - - - 21. 9. 5

Average cost in Fever Hospital, - - - - - 2/9

The Master's estimate of Provisions and Necessaries required for the ensuing week was examined and Orders were duly made for the several articles specified, namely:

The following Books were also produced by the Clerk, their accuracy having been previously ascertained by him, and authenticated by his Signature:

1. The several Clothing Accounts.
2. The Medical Officers' Books.

The Out-door Relief Lists and Weekly Receipt and Expenditure Books of the several Relieving Officers were then produced by the Clerk, their accuracy having been previously ascertained by him and authenticated by his signature.

The Abstract of the Out-door Relief Lists was also produced by the Clerk, having been duly entered up by him for the last week ended Saturday, the day of ; whereby it appeared that in that week the Total Expenditure in Out-door Relief was

|           |   |   |   |   |    |    |
|-----------|---|---|---|---|----|----|
| In money, | - | - | - | £ | s. | d. |
| In kind,  | - | - | - |   |    |    |
| Total.    |   |   |   |   |    |    |

Credit each Relieving Officer, as per Receipt and Expenditure Book.

The requirements of each Relieving Officer for the ensuing week having been duly considered and estimated by the Board, checks on the Treasurer and orders on Contractors, were duly signed and delivered to each of them, of the following amounts and value, respectively:

| RELIEF DISTRICT. | Name of Relieving Officer. | By Check on Treasurer. |       | By Order on Contractors. |                | RELIEF DISTRICT. | Name of Relieving Officer. | By Check on Treasurer. |       | By Order on Contractors. |                |
|------------------|----------------------------|------------------------|-------|--------------------------|----------------|------------------|----------------------------|------------------------|-------|--------------------------|----------------|
|                  |                            | £                      | s. d. | Article and quantity.    | Value. £ s. d. |                  |                            | £                      | s. d. | Article and quantity.    | Value. £ s. d. |
| No. I.           |                            |                        |       |                          |                | Et. forward      |                            |                        |       |                          |                |
| No. II.          |                            |                        |       |                          |                | No. X.           |                            |                        |       |                          |                |
| No. III.         |                            |                        |       |                          |                | No. XI.          |                            |                        |       |                          |                |
| No. IV.          |                            |                        |       |                          |                | No. XII.         |                            |                        |       |                          |                |
| No. V.           |                            |                        |       |                          |                | No. XIII.        |                            |                        |       |                          |                |
| No. VI.          |                            |                        |       |                          |                | No. XIV.         |                            |                        |       |                          |                |
| No. VII.         |                            |                        |       |                          |                | No. XV.          |                            |                        |       |                          |                |
| No. VIII.        |                            |                        |       |                          |                | No. XVI.         |                            |                        |       |                          |                |
| No. IX.          |                            |                        |       |                          |                | No. XVII.        |                            |                        |       |                          |                |
| Car. forw'd.     |                            |                        |       |                          |                | TOTAL.           |                            |                        |       |                          |                |

Credit Treasurer with Checks.

Debit each Relieving Officer with Checks and Orders.

On the Report and recommendation of the Finance Committee the following Bills having been duly examined, and found to be correct, and in accordance with the several Orders were directed to be paid, and Checks for the several amounts were duly drawn on the Treasurer and Signed, namely:

1. Clothing Account

|  |   |    |    |
|--|---|----|----|
|  | £ | s. | d. |
|  |   |    |    |
|  |   |    |    |
|  |   |    |    |

Debit Clothing Account and Credit Treasurer with the several sums as above

2. Establishment Account.

|  |   |    |    |
|--|---|----|----|
|  | £ | s. | d. |
|  |   |    |    |
|  |   |    |    |
|  |   |    |    |

Debit Establishment Account and Credit Treasurer with the several sums as above.







Notices of Marriage between the parties hereunder named having been received from the District Registrar by the Clerk, were duly read at the Board this day in accordance with the 15th section of the 7 & 8 Vic., c. 81.

The Workhouse Register was produced, examined, and authenticated, from No. 1093 to No. 1105, both inclusive, by the signature of the Chairman, and countersignature of the Clerk.

The Out-door Relief Register was produced, examined, and authenticated from No. \_\_\_\_\_ to No. \_\_\_\_\_, inclusive, by the signature of the Chairman and countersignature of the Clerk.

The Clerk's Report on the execution of Orders previously made by the Board was read, to the following effect:

The Ledger was produced by the Clerk, posted up to the last day of Meeting, with the proper Debits and Credits, as ordered on that day.

The Treasurer's Book of Receipts and Payments was produced, by which it appeared that there had been received during the week, - - - - - £108. 16. 7

Paid during the week, - - - - - £86. 14. 8

And that the Balance on the Account of the Guardians was - £258. 7. 0

The Book was signed by the Chairman.

The Weekly balance-sheets of the several Collectors were laid before the Board, their accuracy having been first ascertained and authenticated by the Clerk.

The Lodgments made of Rates affected in the several Electoral Divisions of the Union have been as follows:—

| Name of each Collector. | Electoral Divisions arranged in Collectors' Districts. | Collected and Lodged. |    |    | Total. |    |    | Remaining. |     |      | Total. |    |     |
|-------------------------|--|-----------------------|----|----|--------|----|----|------------|-----|------|--------|----|-----|
|                         |  | £                     | s. | d. | £      | s. | d. | £          | s.  | d.   | £      | s. | d.  |
| Thomas Hardiman         | Coamallow  | 6                     | 13 | 7  |        |    |    | 23         | 5   | 5    |        |    |     |
|                         | Ballycubalaw   | 9                     | 16 |    |        |    |    | 57         | 11  | 3    |        |    |     |
|                         | Beagh  | 5                     | 12 | 3  |        |    |    | 13         | 16  | 1/2  |        |    |     |
|                         | Binnahow   | 36                    | 17 | 9  |        |    |    | 2          | 19  | 9    |        |    |     |
|                         | Leahman  | 2                     | 15 | 70 |        |    |    | 68         | 6   | 5/2  |        |    |     |
|                         | Leaffrail  | 1                     | 14 | 1  |        |    |    | 28         | 2   | 10   |        |    |     |
|                         | Comes  |                       | 9  | 2  |        |    |    | 29         | 8   | 10   |        |    |     |
|                         | God  | 42                    | 8  | 3  |        |    |    | 120        | 8   | 8    |        |    |     |
|                         | Hilbeneenty  |                       |    |    |        |    |    | 45         | 6   | 1    |        |    |     |
|                         | Hilliumy   |                       |    |    |        |    |    | 65         | 8   | 5    |        |    |     |
|                         | Hittartow  | 2                     | 9  | 8  |        |    |    | 45         | 7   | 4    |        |    |     |
| Hittomas                |  |                       |    |    |        |    | 25 | 12         | 9/2 |      |        |    |     |
| Huivara                 |  |                       |    |    |        |    | 63 | 15         | 1/2 |      |        |    |     |
|                         |  |                       |    |    | 108    | 16 | 7  |            |     |      | 633    | 13 | 3/2 |
| Michael Taylor          | Abraham  |                       |    |    |        |    |    | 27         |     | 5    |        |    |     |
|                         | Castle Taylor  |                       |    |    |        |    |    | 46         | 19  | 5    |        |    |     |
|                         | Rahavan  |                       |    |    |        |    |    | 63         | 10  | 8    |        |    |     |
|                         | Mihauagh   |                       |    |    |        |    |    | 23         | 13  | 10   |        |    |     |
|                         |  |                       |    |    |        |    |    |            |     |      | 157    | 4  | 1/2 |
| Edmund Staunt           | Bunnow   |                       |    |    |        |    |    | 79         | 8   | 5    |        |    |     |
|                         | Hillunavara  |                       |    |    |        |    |    | 57         | 8   | 2    |        |    |     |
|                         | Hilluly  |                       |    |    |        |    |    | 64         | 7   | 8/2  |        |    |     |
|                         |  |                       |    |    |        |    |    |            |     |      | 149    | 7  | 8/2 |
|                         | Total  |                       |    |    | 108    | 16 | 7  |            |     |      | 934    | 5  | 1/2 |
| Thomas Hardiman         | Hilunavagh   |                       |    |    |        |    |    | 64         | 6   | 2    |        |    |     |
|                         | Beagh  |                       |    |    |        |    |    | 159        | 10  | 2/2  |        |    |     |
|                         | Hittartow  |                       |    |    |        |    |    | 157        | 0   | 3/2  |        |    |     |
|                         | Hittomas   |                       |    |    |        |    |    | 31         | 17  | 3/2  |        |    |     |
|                         | Hilbuddy   |                       |    |    |        |    |    | 257        | 3   | 2/2  | 297    | 2  | 3/2 |
| Cornelius O'Brien       | Huivara  |                       |    |    |        |    |    | 252        | 4   | 2/2  | 262    | 4  | 2/2 |
|                         | Hillunavara  |                       |    |    |        |    |    | 32         | 15  | 2/2  | 32     | 15 | 2/2 |
| Edmund Staunt           | Hillunavara  |                       |    |    |        |    |    | 70         | 19  | 5/2  |        |    |     |
|                         | Abraham  |                       |    |    |        |    |    | 37         | 4   | 10/2 | 108    | 14 | 1/2 |
| Michael Taylor          | Hillunavara  |                       |    |    |        |    |    | 139        | 19  | 1/2  | 139    | 19 | 1/2 |
|                         | Hilbeneenty  |                       |    |    |        |    |    |            |     |      | 130    | 5  | 7/2 |

NOTE.—A total is to be inserted in Red Ink at the foot of each Collector's District, as well as for the entire Union. Debit the Treasurer and Credit the several Electoral Divisions with the respective amounts lodged.



The Clerk's Account of petty Disbursements made by him since last Meeting, amounting to £ was produced and passed.

The following Books were exhibited by the Clerk, he having first ascertained the accuracy of the entries made therein by the Master of the Workhouse, and authenticated the same by his signature:

1. The Weekly Relief List and Abstract.
2. The Provision Check Accounts.
3. The Provision Receipt and Consumption Account.

By which it appeared that the Cost of Provisions and Necessaries received during the week, was £24. 2 s. 5 d.

|  | £     | s. | d. |
|--|-------|----|----|
| Debit Provision Account, and Credit Invoice Account.       |       |    |    |
| The Cost of Provisions and Necessaries consumed was        | 24.   | 2. | 5  |
| Debit Maintenance Account, and Credit Provision Account.   |       |    |    |
| And the general average Cost of an Inmate for the week was | 21.   | 7. | 6  |
| Average cost in Infirmary,                                 | 21/92 |    |    |
| Average cost in Fever Hospital,                            | 3/1   |    |    |

The Master's estimate of Provisions and Necessaries required for the ensuing week was examined and Orders were duly made for the several articles specified, namely:

|                  |                  |
|------------------|------------------|
| 548 lbs Bread    | 1 lb. pepper     |
| 62 lbs meal      | 3 Bot. port      |
| 560 qts New Milk | 2 pints Whiskey  |
| 1 lb. Salt       | 3 Lms Coals      |
| 68 lbs Tea       | 2 Bot. Wine      |
| 21 lbs Sugar     | 1 Doz. Calico    |
| 3 " Rice         | 2 lbs Gold Candy |

The following Books were also produced by the Clerk, their accuracy having been previously ascertained by him, and authenticated by his signature:

1. The several Clothing Accounts.
2. The Medical Officers' Books.

The Out-door Relief Lists and Weekly Receipt and Expenditure Books of the several Relieving Officers were then produced by the Clerk, their accuracy having been previously ascertained by him, and authenticated by his signature.

The Abstract of the Out-door Relief Lists was also produced by the Clerk, having been duly entered up by him for the last week ended Saturday, the day of ; whereby it appeared that in that week the Total Expenditure in Out-door Relief was

|           | £ | s. | d. |
|-----------|---|----|----|
| In money, |   |    |    |
| In kind,  |   |    |    |
| Total,    |   |    |    |

Credit each Relieving Officer, as per Receipt and Expenditure Book.

The requirements of each Relieving Officer for the ensuing week having been duly considered and estimated by the Board, checks on the Treasurer and orders on Contractors, were duly signed and delivered to each of them, of the following amounts and value, respectively:

| RELIEF DISTRICT. | Name of Relieving Officer. | By Check on Treasurer.<br>£ s. d. | By Order on Contractors. |                   | RELIEF DISTRICT. | Name of Relieving Officer. | By Check on Treasurer.<br>£ s. d. | By Order on Contractors. |                   |
|------------------|----------------------------|-----------------------------------|--------------------------|-------------------|------------------|----------------------------|-----------------------------------|--------------------------|-------------------|
|                  |                            |                                   | Article and quantity.    | Value.<br>£ s. d. |                  |                            |                                   | Article and quantity.    | Value.<br>£ s. d. |
| No. I.           |                            |                                   |                          |                   | Bt. forward      |                            |                                   |                          |                   |
| No. II.          |                            |                                   |                          |                   | No. X.           |                            |                                   |                          |                   |
| No. III.         |                            |                                   |                          |                   | No. XI.          |                            |                                   |                          |                   |
| No. IV.          |                            |                                   |                          |                   | No. XII.         |                            |                                   |                          |                   |
| No. V.           |                            |                                   |                          |                   | No. XIII.        |                            |                                   |                          |                   |
| No. VI.          |                            |                                   |                          |                   | No. XIV.         |                            |                                   |                          |                   |
| No. VII.         |                            |                                   |                          |                   | No. XV.          |                            |                                   |                          |                   |
| No. VIII.        |                            |                                   |                          |                   | No. XVI.         |                            |                                   |                          |                   |
| No. IX.          |                            |                                   |                          |                   | No. XVII.        |                            |                                   |                          |                   |
| Car. fwd.        |                            |                                   |                          |                   | TOTAL,           |                            |                                   |                          |                   |

Credit Treasurer with Checks.

Debit each Relieving Officer with Checks and Orders.

On the Report and recommendation of the Finance Committee the following Bills having been duly examined, and found to be correct, and in accordance with the several Orders were directed to be paid, and Checks for the several amounts were duly drawn on the Treasurer and Signed, namely:

| 1. Clothing Account. | £ | s. | d. |
|----------------------|---|----|----|
|                      |   |    |    |

Debit Clothing Account and Credit Treasurer with the several sums as above

2. Establishment Account.

|               |   |    |    |
|---------------|---|----|----|
| Margaret Kemp | 3 |    |    |
| Andrew Ford   | 1 | 10 | 10 |
| James Plater  | 2 | 11 | 9  |

Debit Establishment Account and Credit Treasurer with the several sums as above.







The following Orders of the Poor Law Commissioners were laid before the Board, and directions given thereon, as follows:

The following Letters from the Poor Law Commissioners and others were read by the Clerk, and directions given to answer them respectively, to the following effect, or Orders made on them respectively as follows:

Letter from John D. French General Valuation Office Dublin 13<sup>th</sup> January 1837 stating that Mr William Doherty has been appointed to make the annual revision of the valuation of the Union of Gort.

Letter from Poor Law Commissioners 11<sup>th</sup> January No 210. 1837 fixing their sanction to the appointment of John Burke to the office of Schoolmaster.

Letter from same 10<sup>th</sup> January No 221. 1837 calling the attention of the Guardians to the unsatisfactory state of the Collection and also to the irregularity of the Collectors, especially Collectors Guardians holding balances in their hands from week to week.

Ordered that the Collectors attention be drawn to the subject of this letter.

Letter from Poor Law Commissioners 12<sup>th</sup> January No 699. 1837 for a plan for erection of a Dispensary shed at the Workhouse.

To be considered this day fortnight and a full Board be summoned for the purpose.

Letter from same 20<sup>th</sup> January No 241. 1837 reporting that the Board of Guardians will reconsider their resolutions of the 1<sup>st</sup> Inst, fixing the salaries of the Dispensary Districts of the Union at eighty pounds per annum, with a view to increase the salary of the Medical Officer of the first Dispensary District to £90 per annum.

To be considered this day fortnight.

Letter from same 17<sup>th</sup> January No 1284. 1837 reporting that Mr Ford will consider whether he will get into the Spirit Trade, before he enters on the duties of the office of Relieving Officer.

Mr Ford stated he has abandoned his intention of getting into the Spirit or any other Retail Trade.



The cases of provisional relief, and applications for relief were considered and decided on, as set forth in the Application and Report Books.

The number of provisional admissions to the Workhouse confirmed was . . . . . 4

Ditto disallowed . . . . . 6

The number of applicants admitted to the Workhouse was . . . . .

The number of cases of provisional Out-door relief was . . . . .

Do. do. in which relief was continued by the Guardians . . . . .

The number of other applicants in the Relieving Officer's Books relieved by order of the Guardians was . . . . .

The number of applicants for whom relief was not granted

The Bonds and other securities in force were laid before the Guardians by the Clerk, together with his Report thereon, as follows: (this on the second Meeting after the Annual Election in every year.)

The Board accepted the Tender of Pat Keving for supplying the Workhouse with best Linen & Muslins

Spice notice that on this day fortnight I have been informed that the Salary of Martin O'Connell Relieving Officer has increased according to the Salary paid the other Relieving Officers — John Harty

Spice notice that on this day fortnight I have been informed that Miss Canfield be transferred from Ardaraullian E. to both Union at Large John Harty

The following explanation in writing was given by Dr. Nolan in answer to the Letter of the Poor Law Commissioners dated 7th July 1851  
Got 15<sup>th</sup> Aug 1851

Gentlemen  
In reply to Dr. Brodie's report on the State of the County. The Poor Law Commissioners Letter on the Subject and the order made by you thereon last Board day they to state with all respect that I consider it is the Apothecary who ought to have been called upon to explain under the Circumstances. The Compounding department is peculiarly in charge of that office and if any irregularity occurs such as Dr. Brodie describes he is I conceive the responsible party.

The Apothecary holds his appointment quite independent of me. He was appointed by the Board and sanctioned by the Poor Law Commissioners — There are no duties that I am aware of either as regards control or supervision



presented for me in reference to him by you or  
 the Commissioners. Under these Circumstances  
 respectfully hold I am not accountable for any  
 irregularity in his department - I have various  
 and responsible duties of my own to attend to  
 at a very reduced salary, one of the reasons  
 assigned by the Poor Law Commissioners for  
 such reduction that had an Apothecary  
 to assist me) and if under such  
 Circumstances additional duties & responsibilities  
 are imposed upon me in the shape of looking  
 after the Mechanical and minor duties of the  
 Compounding department. I cannot help  
 thinking that I am placed in a most  
 anomalous, painful harassing position

In a case therefore of divided  
 responsibility like the present, respectfully  
 submit to you & the Poor Law Commissioners  
 that I am not answerable for the irregularity  
 referred to in Dr. Meade's report -

I have the honor to be  
 your obedient  
 servant  
 Martin Dwyer M.D.

Next Meeting of the Guardians to be held on \_\_\_\_\_ the  
 day of \_\_\_\_\_ 185 .

(Signed) \_\_\_\_\_  
 Clerk of the Union.



Galway County Council Archives

10  
B  
C

10  
B  
C  
D



The following Letters on matters arising under the Medical Charities Act or the Nuisances Removal and Diseases Prevention Acts, from the Poor Law Commissioners and others were read by the Clerk, and directions given to answer them respectively, to the following effect (or Orders were made on them respectively as follows:)

Read Letter from \_\_\_\_\_ dated \_\_\_\_\_ stating that

Galway County Council

(Signed,)

Clerk of the Union.

**UNION.**

Population in 1851. *26287*

Present Net Annual Value, £*4053.13.0*

STATE of the WORKHOUSE for the Week ending Saturday, the *24* day of *January* 185*4*.

| Number of Inmates for which accommodation is provided.    | No. that can be accommodated in each building. | Total No. in each building on the above date. | Able-bodied. |           | Aged and Infirm persons, above 15 years of age, but not working. |           | Boys and Girls above 9 and under 15 years of age. |           | Children above 6 and under 9 years of age. | Children above 2 and under 6 years of age. | Infants under 2 years of age. | RETURN OF SICK AND LUNATICS.          |  | OBSERVATIONS. |
|---|--|---|--------------|-----------|--|-----------|---|-----------|--|--|-------------------------------|---------------------------------------|--|---------------|
|   |  |   | Males.       | Fem.      | Males.   | Fem.      | Boys.   | Girls.    |  |  |                               | Number in Hospital on the above date. | No. of Lunatics and Idiots in Workhouse on the above date. |               |
| Workhouse, . . .  | <i>150</i>                                     | <i>177</i>                                    |              |           |  |           |   |           |  |  |                               |                                       |  |               |
| Temporary Buildings, . . .                                | <i>70</i>                                      | <i>70</i>                                     |              |           |  |           |   |           |  |  |                               |                                       |  |               |
| Additional Workhouse, . . .                               | <i>56</i>                                      | <i>56</i>                                     |              |           |  |           |   |           |  |  |                               |                                       |  |               |
| Fever Sheds, . . .  | <i>10</i>                                      | <i>10</i>                                     |              |           |  |           |   |           |  |  |                               |                                       |  |               |
| Total, . . .  | <i>286</i>                                     | <i>313</i>                                    |              |           |  |           |   |           |  |  |                               |                                       |  |               |
| Remaining on previous Saturday, as per last Return, . . . |  |   | <i>29</i>    | <i>57</i> | <i>6</i>   | <i>12</i> | <i>23</i>   | <i>11</i> | <i>6</i>                                   | <i>16</i>                                  | <i>15</i>                     | <i>175</i>                            |  |               |
| Admitted during the Week, . . .                           |  |   | <i>5</i>     | <i>8</i>  |  |           |   |           |  | <i>1</i>                                   | <i>14</i>                     |                                       |  |               |
| TOTAL, . . .  |  |   | <i>34</i>    | <i>65</i> | <i>6</i>   | <i>12</i> | <i>23</i>   | <i>11</i> | <i>6</i>                                   | <i>17</i>                                  | <i>189</i>                    |                                       |  |               |
| Discharged during the Week, . . .                         |  |   | <i>3</i>     | <i>11</i> |  |           |   |           |  | <i>1</i>                                   | <i>1</i>                      | <i>9</i>                              |  |               |
| Died, . . .   |  |   |              |           |  |           |   |           |  |  |                               |                                       |  |               |
| Total Discharged and Dead, . . .                          |  |   | <i>3</i>     | <i>11</i> |  |           |   |           |  | <i>1</i>                                   | <i>1</i>                      | <i>9</i>                              |  |               |
| REMAINING ON THE ABOVE DATE, . . .                        |  |   | <i>31</i>    | <i>61</i> | <i>6</i>   | <i>12</i> | <i>23</i>   | <i>11</i> | <i>6</i>                                   | <i>16</i>                                  | <i>14</i>                     | <i>180</i>                            |  |               |

RETURN of DESTITUTE PERSONS relieved out of the Workhouse, as by Relief Lists, for the last Week ended Saturday, the \_\_\_\_\_ day of \_\_\_\_\_ authenticated and laid before the Board of Guardians at this Meeting.

| RELIEF DISTRICT. | Destitute Persons relieved out of the Workhouse under 10 Vict. c. 31, s. 1. |   | Destitute Persons relieved out of the Workhouse, but not comprised in Sec. 1. |   | Total relieved out of the Workhouse. |          | RELIEF DISTRICT. | Destitute Persons relieved out of the Workhouse under 10 Vict. c. 31, s. 1. |   | Destitute Persons relieved out of the Workhouse, but not comprised in Sec. 1. |   | Total relieved out of the Workhouse. |          |
|------------------|---|---|---|---|--------------------------------------|----------|------------------|---|---|---|---|--------------------------------------|----------|
|                  | Number of cases relieved.   | Number of Persons, including Applicant and Family, dependent on him or her. | Number of cases relieved.   | Number of Persons, including Applicant and Family, dependent on him or her. | Cases.                               | Persons. |                  | Number of cases relieved.   | Number of Persons, including Applicant and Family, dependent on him or her. | Number of cases relieved.   | Number of Persons, including Applicant and Family, dependent on him or her. | Cases.                               | Persons. |
| No. I.           |   |   |   |   |                                      |          | Bt. forward      |   |   |   |   |                                      |          |
| No. II.          |   |   |   |   |                                      |          | No. X.           |   |   |   |   |                                      |          |
| No. III.         |   |   |   |   |                                      |          | No. XI.          |   |   |   |   |                                      |          |
| No. IV.          |   |   |   |   |                                      |          | No. XII.         |   |   |   |   |                                      |          |
| No. V.           |   |   |   |   |                                      |          | No. XIII.        |   |   |   |   |                                      |          |
| No. VI.          |   |   |   |   |                                      |          | No. XIV.         |   |   |   |   |                                      |          |
| No. VII.         |   |   |   |   |                                      |          | No. XV.          |   |   |   |   |                                      |          |
| No. VIII.        |   |   |   |   |                                      |          | No. XVI.         |   |   |   |   |                                      |          |
| No. IX.          |   |   |   |   |                                      |          | No. XVII.        |   |   |   |   |                                      |          |
| Car. forward     |   |   |   |   |                                      |          | TOTAL,           |   |   |   |   |                                      |          |

COPY of MINUTES of Proceedings of the Board of Guardians, at a Meeting held on *Thursday* the *29th* day of *January* 185*4*

PRESENT: In the Chair, *James Sahif*  
 Other Guardians: *Red Bull, W. St. John, Capt Taylor, Patrick Burke*

The Minutes of last Meeting were read and Signed.



Notices of Marriage between the parties hereunder named having been received from the District Registrar by the Clerk, were duly read at the Board this day in accordance with the 15th section of the 7 & 8 Vic., c. 81.

The Workhouse Register was produced, examined, and authenticated, from No. 5 to No. 9, both inclusive, by the signature of the Chairman, and countersignature of the Clerk.

The Out-door Relief Register was produced, examined, and authenticated from No. \_\_\_\_\_ to No. \_\_\_\_\_, inclusive, by the signature of the Chairman and countersignature of the Clerk.

The Clerk's Report on the execution of Orders previously made by the Board was read, to the following effect:

The Ledger was produced by the Clerk, posted up to the last day of Meeting, with the proper Debits and Credits, as ordered on that day.

The Treasurer's Book of Receipts and Payments was produced, by which it appeared that there had been received during the week, - - - - - £16. 15. 0

Paid during the week, - - - - - £2. 4. 9

And that the Balance on the Account of the Guardians was - £90. 7. 2

The Book was signed by the Chairman.

The Weekly balance-sheets of the several Collectors were laid before the Board, their accuracy having been first ascertained and authenticated by the Clerk.

The Ledgers made of Rates collected in the several Electoral Divisions appear to have been as follows:—

| Name of each Collector. | Electoral Divisions arranged in Collectors' Districts. | Collected and Lodged. |    |    | Total. |    |     | Remaining. |     |      | Total. |    |      |     |     |
|-------------------------|--|-----------------------|----|----|--------|----|-----|------------|-----|------|--------|----|------|-----|-----|
|                         |  | £                     | s. | d. | £      | s. | d.  | £          | s.  | d.   | £      | s. | d.   |     |     |
| Thomas Anderson         | Ardrara  | .                     | .  | .  |        |    |     | 29         | 5   | 5    |        |    |      |     |     |
|                         | Ballycathalaw  | .                     | .  | .  |        |    |     | 50         | 11  | 3    |        |    |      |     |     |
|                         | Ballyn   | .                     | .  | .  |        |    |     | 13         | 16  | 1/2  |        |    |      |     |     |
|                         | Ballynahow   | .                     | .  | .  |        |    |     | 3          | 19  | 9    |        |    |      |     |     |
|                         | Castlemore   | .                     | .  | .  |        |    |     | 65         | 6   | 5/2  |        |    |      |     |     |
|                         | Clappard   | .                     | .  | .  |        |    |     | 28         | 2   | 10   |        |    |      |     |     |
|                         | Comes  | .                     | .  | .  |        |    |     | 29         | 8   | 10   |        |    |      |     |     |
|                         | Don  | .                     | .  | .  |        |    |     | 121        | 6   | 8    |        |    |      |     |     |
|                         | Killicumby   | .                     | .  | .  |        |    |     | 45         | 6   | 1    |        |    |      |     |     |
|                         | Kilcumy  | .                     | .  | .  |        |    |     | 65         | 8   | 5    |        |    |      |     |     |
| Kittaton                | .  | .                     | .  |    |        |    | 95  | 7          | 4   |      |        |    |      |     |     |
| Kittomas                | .  | .                     | .  |    |        |    | 257 | 9          | 9/2 |      |        |    |      |     |     |
| Kiwarra                 | .  | .                     | .  |    |        |    | 63  | 19         | 1/2 |      |        |    |      |     |     |
|                         |  |                       |    |    |        |    |     |            |     |      |        |    | 133  | 13  | 2   |
| Michael Taylor          | Ardrara  | 4                     | 11 | 10 |        |    |     | 22         | 8   | 7    |        |    |      |     |     |
|                         | Castle Taylor  | 8                     | .  | 7  |        |    |     | 38         | 8   | 10   |        |    |      |     |     |
|                         | Ballynahow   | .                     | .  | .  |        |    |     | 53         | 10  | 8    |        |    |      |     |     |
|                         | Clappard   | 4                     | 2  | 7  |        |    |     | 19         | 11  | 3    |        |    |      |     |     |
|                         |  |                       |    |    |        |    |     |            |     |      |        |    | 16   | 15  |     |
| Edmond Staunton         | Ardrara  | .                     | .  | .  |        |    |     | 79         | 8   | 3    |        |    |      |     |     |
|                         | Kilcumy  | .                     | .  | .  |        |    |     | 57         | 8   | 5/2  |        |    |      |     |     |
|                         | Kilcumy  | .                     | .  | .  |        |    |     | 64         | 7   | 5/2  |        |    |      |     |     |
|                         |  |                       |    |    |        |    |     |            |     |      |        |    | 149  | 9   | 8/2 |
|                         |  |                       |    |    |        |    |     |            |     |      |        |    | 16   | 15  |     |
|                         |  |                       |    |    |        |    |     |            |     |      |        |    | 91   | 10  | 4   |
| Thomas Anderson         | Kilcumy  | .                     | .  | .  |        |    |     | 64         | 6   | 2    |        |    |      |     |     |
|                         | Ballyn   | .                     | .  | .  |        |    |     | 159        | 10  | 2/2  |        |    |      |     |     |
|                         | Kittaton   | .                     | .  | .  |        |    |     | 15         | 10  | 3/2  |        |    |      |     |     |
|                         | Kittomas   | .                     | .  | .  |        |    |     | 31         | 17  | 3/2  |        |    |      |     |     |
|                         | Kilcumy  | .                     | .  | .  |        |    |     | 25         | 8   | 3/2  | 2      | 9  | 2    | 3/2 |     |
| Cornelius O'Brien       | Kiwarra  | .                     | .  | .  |        |    |     | 25         | 2   | 4    | 2      | 6  | 2    | 4   | 2   |
|                         | Kilcumy  | .                     | .  | .  |        |    |     | 32         | 15  | 2    | 32     | 15 | 2    |     |     |
| Edmond Staunton         | Kilcumy  | .                     | .  | .  |        |    |     | 70         | 19  | 5/2  |        |    |      |     |     |
|                         | Ardrara  | .                     | .  | .  |        |    |     | 37         | 12  | 10   | 10     | 5  | 4    | 4   |     |
| Michael Taylor          | Kilcumy  | .                     | .  | .  |        |    |     | 13         | 19  | 11/2 | 13     | 19 | 11/2 |     |     |
|                         | Kilcumy  | .                     | .  | .  |        |    |     |            |     |      |        |    |      |     |     |
| E. Sheehy               | Kilcumy  | .                     | .  | .  |        |    |     |            |     |      |        |    |      |     |     |
|                         | Kilcumy  | .                     | .  | .  |        |    |     |            |     |      |        |    |      |     |     |
|                         |  |                       |    |    |        |    |     |            |     |      |        |    | 830  | 5   | 7/2 |

NOTE.—A total is to be inserted in Red Ink at the foot of each Collector's District, as well as for the entire Union.

Debit the Treasurer and Credit the several Electoral Divisions with the respective amounts lodged.



The Clerk's Account of petty Disbursements made by him since last Meeting, amounting to £ was produced and passed.

The following Books were exhibited by the Clerk, he having first ascertained the accuracy of the entries made therein by the Master of the Workhouse, and authenticated the same by his signature:

1. The Weekly Relief List and Abstract.
2. The Provision Check Accounts.
3. The Provision Receipt and Consumption Account.

By which it appeared that the Cost of Provisions and Necessaries received during the week, was £12. 18. 6.

|  |            |
|--|------------|
| Debit Provision Account, and Credit Invoice Account.       | £ s. d.    |
| The Cost of Provisions and Necessaries consumed was        | 12. 18. 6  |
| Debit Maintenance Account, and Credit Provision Account.   | 21. 15. 10 |
| And the general average Cost of an Inmate for the week was | 2/1        |
| Average cost in Infirmary,                                 | 2/9 3/4    |
| Average cost in Fever Hospital,                            | 3/6        |

The Master's estimate of Provisions and Necessaries required for the ensuing week was examined and Orders were duly made for the several articles specified, namely:

337 lb Bread  
68 " Meat  
1/4 Ton oatmeal  
1/2 " Ryemeal  
1/2 " Barleymeal  
540 qts New Milk  
1 pint Salt  
68 lb Tea

21 lb Sugar  
1 " Peppers  
2 pints Whiskey  
3 Bottle stoppers  
1 Doz Candles  
2 lb Potash

The following Books were also produced by the Clerk, their accuracy having been previously ascertained by him, and authenticated by his signature:

1. The several Clothing Accounts.
2. The Medical Officers' Books.

The Out-door Relief Lists and Weekly Receipt and Expenditure Books of the several Relieving Officers were then produced by the Clerk, their accuracy having been previously ascertained by him, and authenticated by his signature.

The Abstract of the Out-door Relief Lists was also produced by the Clerk, having been duly entered up by him for the last week ended Saturday, the day of ; whereby it appeared that in that week the Total Expenditure in Out-door Relief was

|           |         |
|-----------|---------|
| In money, | £ s. d. |
| In kind,  | -       |
| Total,    | -       |

Credit each Relieving Officer, as per Receipt and Expenditure Book.

The requirements of each Relieving Officer for the ensuing week having been duly considered and estimated by the Board, checks on the Treasurer and orders on Contractors, were duly signed and delivered to each of them, of the following amounts and value, respectively:

| RELIEF DISTRICT. | Name of Relieving Officer. | By Check on Treasurer.<br>£ s. d. | By Order on Contractors. |                   | RELIEF DISTRICT. | Name of Relieving Officer. | By Check on Treasurer.<br>£ s. d. | By Order on Contractors. |                   |
|------------------|----------------------------|-----------------------------------|--------------------------|-------------------|------------------|----------------------------|-----------------------------------|--------------------------|-------------------|
|                  |                            |                                   | Article and quantity.    | Value.<br>£ s. d. |                  |                            |                                   | Article and quantity.    | Value.<br>£ s. d. |
| No. I.           |                            |                                   |                          |                   | Bt. forward      |                            |                                   |                          |                   |
| No. II.          |                            |                                   |                          |                   | No. X.           |                            |                                   |                          |                   |
| No. III.         |                            |                                   |                          |                   | No. XI.          |                            |                                   |                          |                   |
| No. IV.          |                            |                                   |                          |                   | No. XII.         |                            |                                   |                          |                   |
| No. V.           |                            |                                   |                          |                   | No. XIII.        |                            |                                   |                          |                   |
| No. VI.          |                            |                                   |                          |                   | No. XIV.         |                            |                                   |                          |                   |
| No. VII.         |                            |                                   |                          |                   | No. XV.          |                            |                                   |                          |                   |
| No. VIII.        |                            |                                   |                          |                   | No. XVI.         |                            |                                   |                          |                   |
| No. IX.          |                            |                                   |                          |                   | No. XVII.        |                            |                                   |                          |                   |
| Car. fwd.        |                            |                                   |                          |                   | TOTAL.           |                            |                                   |                          |                   |

Credit Treasurer with Checks.

Debit each Relieving Officer with Checks and Orders.

On the Report and recommendation of the Finance Committee the following Bills having been duly examined, and found to be correct, and in accordance with the several Orders were directed to be paid, and Checks for the several amounts were duly drawn on the Treasurer and Signed, namely:

1. Clothing Account

£ s. d.

Debit Clothing Account and Credit Treasurer with the several sums as above

2. Establishment Account.

James Oates to pay Petal Bills

1 19 10

Debit Establishment Account and Credit Treasurer with the several sums as above.



3. Workhouse Invoice Account.

|                                 | £   | s. | d. |
|---------------------------------|-----|----|----|
| John Keegan for Bread to 35 Dec | 118 | 8  | 10 |
| Michael King for Soap to 24 Aug | 4   | 18 | 9  |
| Michael Logarty do do           | 4   | 6  | 3  |
| Michael Clark for Meat do       | 1   | 1  | .  |

Debit Workhouse Invoice Account and Credit Treasurer with the several sums as above.

4. Out-door Relief Invoice Account.

|  | £ | s. | d. |
|--|---|----|----|
|  |   |    |    |

Credit Treasurer and Debit Out-door Relief Invoice Account with the several sums as above.

The Clerk's Report of Vaccination was read - (this on the first meeting in every month.) - Number of successful cases.

The Report of the Visiting Committee was read and Orders were made thereon as follows:

The following cheques were ordered

Amey Comer for Rent of Acre to 29 May 1836 7. 16. 5

|                 |                 |
|-----------------|-----------------|
| to Treasurer    |                 |
| to Miss Bel's   | 4. 18. 2        |
| " Establishment | <u>2. 18. 3</u> |

7. 16. 5

The Reports of the Master and other Officers were read and Orders made thereon as follows:

The Medical Officer reports the general health of the Poorhouse inmates satisfactory - As some of the clothing is very defective he thinks it is especially necessary at this season of the year to expedite the new clothing which he understands is in course of preparation



The following Orders of the Poor Law Commissioners were laid before the Board, and directions given thereon, as follows

The following Letters from the Poor Law Commissioners and others were read by the Clerk, and directions given to answer them respectively, to the following effect, or Orders made on them respectively as follows:—

Letter from Poor Law Commissioners  
28<sup>th</sup> January 1837. No. 2369. Giving  
this direction to the approbation of Arthur  
Lodge Esq. of the office of Petitioning Officer.

Letter from same 28<sup>th</sup> January 1837  
referring to Dr. Brodie's report on the irregularity  
of the Surgery, and how far the Medical Officer  
was responsible, also requiring an explanation  
from the Apothecary.

The Apothecary being called on to give an  
explanation in answer has promised to give  
it in next Board day.

Gainway Council Archives



The cases of provisional relief, and applications for relief were considered and decided on, as set forth in the Application and Report Books.

The number of provisional admissions to the Workhouse confirmed was - - - 3

Of the disallowed - - - - -

The number of applicants admitted to the Workhouse was - - - 1

The number of cases of provisional Out-door relief was - - - -

Do. do. in which relief was continued by the Guardians - - - -

The number of other applicants in the Relieving Officers' Books relieved by order of the Guardians was - - - -

The number of applicants for whom relief was not ordered

The Bonds and other securities in force were laid before the Guardians by the Clerk, together with his Report thereon, as follows: (this on the second Meeting after the Annual Election in every year.)







The following Letters on matters arising under the Medical Charities Act or the Nuisances Removal and Diseases Prevention Acts, from the Poor Law Commissioners and others were read by the Clerk, and directions given to answer them respectively, to the following effect (or Orders were made on them respectively as follows:)

Read Letter from \_\_\_\_\_ dated \_\_\_\_\_ stating that \_\_\_\_\_

(Signed)

Clerk of the Union.

*Corr* UNION.

Population in 1851, *26287*

Present Net Annual Value, £4053.13.0

STATE of the WORKHOUSE for the Week ending Saturday, the *31<sup>st</sup>* day of *January* 1857.

| Number of Inmates for which accommodation is provided.        | No. that can be accommodated in each building. | Total No. in each building on the above date. | Able-bodied. |           |          |           |           |           |                                       | Total.    | RETURN OF SICK AND LUNATICS.                               |            | OBSERVATIONS. |
|---|--|---|--------------|-----------|----------|-----------|-----------|-----------|---------------------------------------|-----------|--|------------|---------------|
|   |  |   | Males.       | Fem.      | Males.   | Fem.      | Boys.     | Girls.    | Number in Hospital on the above date. |           | No. of Lunatics and Idiots in Workhouse on the above date. |            |               |
| Workhouse, . . . . .  | <i>152</i>                                     | <i>170</i>                                    |              |           |          |           |           |           |                                       |           |  |            |               |
| Temporary Buildings, . . . . .                                | <i>70</i>                                      |   |              |           |          |           |           |           |                                       |           |  |            |               |
| Additional Workhouse, . . . . .                               | <i>50</i>                                      |   |              |           |          |           |           |           |                                       |           |  |            |               |
| Permanent Fever Hospital, . . . . .                           |  |   |              |           |          |           |           |           |                                       |           |  |            |               |
| Fever Sheds, . . . . .  |  |   |              |           |          |           |           |           |                                       |           |  |            |               |
| Total, . . . . .  | <i>272</i>                                     | <i>170</i>                                    |              |           |          |           |           |           |                                       |           |  |            |               |
| Remaining on previous Saturday, as per last Return, . . . . . |  |   | <i>31</i>    | <i>61</i> | <i>6</i> | <i>12</i> | <i>23</i> | <i>11</i> | <i>6</i>                              | <i>16</i> | <i>14</i>  | <i>180</i> |               |
| Admitted during the Week, . . . . .                           |  |   |              | <i>5</i>  |          |           |           |           |                                       |           |  | <i>5</i>   |               |
| TOTAL, . . . . .  |  |   | <i>31</i>    | <i>66</i> | <i>6</i> | <i>12</i> | <i>23</i> | <i>11</i> | <i>6</i>                              | <i>16</i> | <i>14</i>  | <i>185</i> |               |
| Discharged during the Week, . . . . .                         |  |   | <i>3</i>     | <i>5</i>  |          |           | <i>1</i>  |           |                                       |           |  | <i>10</i>  |               |
| Died, . . . . .   |  |   | <i>1</i>     |           |          |           |           |           |                                       |           |  | <i>1</i>   |               |
| Total Discharged and Dead, . . . . .                          |  |   | <i>4</i>     | <i>5</i>  |          |           | <i>1</i>  |           |                                       |           |  | <i>11</i>  |               |
| REMAINING ON THE ABOVE DATE, . . . . .                        |  |   | <i>27</i>    | <i>61</i> | <i>6</i> | <i>12</i> | <i>22</i> | <i>11</i> | <i>6</i>                              | <i>16</i> | <i>14</i>  | <i>179</i> |               |

RETURN of DESTITUTE PERSONS relieved out of the Workhouse, as by Relief Lists, for the last Week ended Saturday, the day of \_\_\_\_\_ authenticated and laid before the Board of Guardians at this Meeting.

| RELIEF DISTRICT. | Destitute Persons relieved out of the Workhouse under 10 Vict. c. 31, s. 1. |   | Destitute Persons relieved out of the Workhouse, but not comprised in Sec. 1. |   | Total relieved out of the Workhouse. |          | RELIEF DISTRICT. | Destitute Persons relieved out of the Workhouse under 10 Vict. c. 31, s. 1. |   | Destitute Persons relieved out of the Workhouse, but not comprised in Sec. 1. |   | Total relieved out of the Workhouse. |          |
|------------------|---|---|---|---|--------------------------------------|----------|------------------|---|---|---|---|--------------------------------------|----------|
|                  | Number of cases relieved.   | Number of Persons, including Applicant and Family, dependent on him or her. | Number of cases relieved.   | Number of Persons, including Applicant and Family, dependent on him or her. | Cases.                               | Persons. |                  | Number of cases relieved.   | Number of Persons, including Applicant and Family, dependent on him or her. | Number of cases relieved.   | Number of Persons, including Applicant and Family, dependent on him or her. | Cases.                               | Persons. |
| No. I.           |   |   |   |   |                                      |          | Bt. forward.     |   |   |   |   |                                      |          |
| No. II.          |   |   |   |   |                                      |          | No. X.           |   |   |   |   |                                      |          |
| No. III.         |   |   |   |   |                                      |          | No. XI.          |   |   |   |   |                                      |          |
| No. IV.          |   |   |   |   |                                      |          | No. XII.         |   |   |   |   |                                      |          |
| No. V.           |   |   |   |   |                                      |          | No. XIII.        |   |   |   |   |                                      |          |
| No. VI.          |   |   |   |   |                                      |          | No. XIV.         |   |   |   |   |                                      |          |
| No. VII.         |   |   |   |   |                                      |          | No. XV.          |   |   |   |   |                                      |          |
| No. VIII.        |   |   |   |   |                                      |          | No. XVI.         |   |   |   |   |                                      |          |
| No. IX.          |   |   |   |   |                                      |          | No. XVII.        |   |   |   |   |                                      |          |
| Car. forward     |   |   |   |   |                                      |          | TOTAL,           |   |   |   |   |                                      |          |

COPY of MINUTES of Proceedings of the Board of Guardians, at a Meeting held on *Thursday* the *5<sup>th</sup>* day of *January* 1857

PRESENT: In the Chair, *Lawsahiff*  
 Other Guardians: *Arthur Alusander*  
*Capt Taylor* *Mr George. M. Moran* *H. Lahiff*  
*Henry Blayquin* *S. Bayot* *Patrick Burke*  
*John Anthony Taylor* *Mich. Stewart*  
*Michael Boyle* *John Forest*

The Minutes of last Meeting were read and Signed.



Notices of Marriage between the parties hereunder named having been received from the District Registrar by the Clerk, were duly read at the Board this day in accordance with the 15th section of the 7 & Vic., c. 81.

The Workhouse Register was produced, examined, and authenticated, from No. \_\_\_\_\_ to No. \_\_\_\_\_, both inclusive, by the signature of the Chairman, and countersignature of the Clerk.

The Out-door Relief Register was produced, examined, and authenticated from No. \_\_\_\_\_ to No. \_\_\_\_\_, inclusive, by the signature of the Chairman and countersignature of the Clerk.

The Clerk's Report on the execution of Orders previously made by the Board was read, to the following effect:

The Ledger was produced by the Clerk, posted up to the last day of Meeting, with the proper Debits and Credits, as ordered on that day.

The Treasurer's Book of Receipts and Payments was produced, by which it appeared that there had been received during the week, - - - - - £110. 6. 8

Paid during the week, - - - - - £261. 0. 9

And that the Balance on the Account in favour of the Guardians was - £144. 5. 1

The Book was signed by the Chairman.

The Weekly balance-sheets of the several Collectors were laid before the Board, their accuracy having been first ascertained and authenticated by the Clerk.

The Lodgments made of Rates collected in the several Electoral Divisions appear to have been as follows:—

| Name of each Collector. | Electoral Divisions arranged in Collectors' Districts. | Collected and Lodged. |    |    | Total. |    |    | Remaining. |    |    | Total. |    |    |
|-------------------------|--|-----------------------|----|----|--------|----|----|------------|----|----|--------|----|----|
|                         |  | £                     | s. | d. | £      | s. | d. | £          | s. | d. | £      | s. | d. |
| Thomas Hardiman         | Ad. sandwellia   | 1                     | 15 | 4  |        |    |    | 21         | 10 | 1  |        |    |    |
|                         | Ballycubalar   | 1                     | 7  | 3  |        |    |    | 49         | 4  |    |        |    |    |
|                         | Beagh  | 2                     | 12 | 5  |        |    |    | 11         | 3  | 8  |        |    |    |
|                         | Bullaahow  | 4                     | 10 |    |        |    |    | 3          | 12 | 11 |        |    |    |
|                         | Cashmore   | 2                     | 6  |    |        |    |    | 66         |    | 5  |        |    |    |
|                         | Cappard  |                       |    |    |        |    |    | 28         | 2  | 10 |        |    |    |
|                         | Doons  | 10                    | 9  |    |        |    |    | 18         | 19 | 10 |        |    |    |
|                         | Enn  | 20                    | 17 | 6  |        |    |    | 99         | 11 | 2  |        |    |    |
|                         | Killichaunty   |                       |    |    |        |    |    | 45         | 6  | 1  |        |    |    |
|                         | Killinurey   | 19                    | 4  | 7  |        |    |    | 46         | 3  | 10 |        |    |    |
|                         | Kittarton  | 57                    | 9  | 9  |        |    |    | 43         | 17 | 7  |        |    |    |
|                         | Kittomas   |                       |    |    |        |    |    | 25         | 12 | 9  |        |    |    |
| Kinnara                 |  |                       |    |    |        |    | 13 | 19         | 1  |    |        |    |    |
|                         |  |                       |    |    | 110    | 6  | 8  |            |    |    | 523    | 6  | 4  |
| Michael Laylor          | Ad. rahau  |                       |    |    |        |    |    | 22         | 8  | 7  |        |    |    |
|                         | Castle Laylor  |                       |    |    |        |    |    | 38         | 18 | 10 |        |    |    |
|                         | Rahardue   |                       |    |    |        |    |    | 53         | 10 | 8  |        |    |    |
|                         | McHaragh   |                       |    |    |        |    |    | 19         | 11 | 3  |        |    |    |
|                         |  |                       |    |    |        |    |    |            |    |    | 134    | 9  | 4  |
| Edward Hunter           | Kinnacoo   |                       |    |    |        |    |    | 79         | 8  | 5  |        |    |    |
|                         | Killinavara  |                       |    |    |        |    |    | 57         | 1  | 8  |        |    |    |
|                         | Killuly  |                       |    |    |        |    |    | 64         | 7  | 5  |        |    |    |
|                         |  |                       |    |    |        |    |    |            |    |    | 199    | 7  | 8  |
| Total                   |  |                       |    |    | 110    | 6  | 8  |            |    |    | 807    | 3  | 4  |
| Thomas Hardiman         | Killichaunty   |                       |    |    |        |    |    | 14         | 6  | 2  |        |    |    |
|                         | Beagh  |                       |    |    |        |    |    | 159        | 10 | 2  |        |    |    |
|                         | Kittarton  |                       |    |    |        |    |    | 15         | 7  | 3  |        |    |    |
|                         | Kittomas   |                       |    |    |        |    |    | 31         | 17 | 3  |        |    |    |
|                         | Killkedy   |                       |    |    |        |    |    | 25         | 18 | 3  |        |    |    |
| Cornelius O'Brien       | Kinnara  |                       |    |    |        |    |    | 25         | 4  |    |        |    |    |
|                         | Killinavara  |                       |    |    |        |    |    | 32         | 15 |    |        |    |    |
| Edward Hunter           | Killinavara  |                       |    |    |        |    | 7  | 0          | 9  |    |        |    |    |
| Michael Laylor          | Ad. rahau  |                       |    |    |        |    |    | 37         | 4  | 10 |        |    |    |
| E. Chaupnessy           | Killichaunty   |                       |    |    |        |    |    | 13         | 9  | 11 |        |    |    |
|                         |  |                       |    |    |        |    |    |            |    |    | 30     | 5  | 7  |

NOTE.—A total is to be inserted in Red Ink at the foot of each Collector's District, as well as for the entire Union.

Debit the Treasurer and Credit the several Electoral Divisions with the respective amounts lodged.



The Clerk's Account of petty Disbursements made by him since last Meeting, amounting to £ was produced and passed.

The following Books were exhibited by the Clerk, he having first ascertained the accuracy of the entries made therein by the Master of the Workhouse, and authenticated the same by his signature:

1. The Weekly Relief List and Abstract.
2. The Provision Check Accounts.
3. The Provision Receipt and Consumption Account.

By which it appeared that the Cost of Provisions and Necessaries received during the week was £33. 0. 5.

|  | £    | s.  | d.    |
|--|------|-----|-------|
| Debit Provision Account, and Credit Invoice Account.         | 33.  | 0.  | 5     |
| The Cost of Provisions and Necessaries consumed was -        | 21.  | 14. | 1     |
| Debit Maintenance Account, and Credit Provision Account.     | 21.  | 14. | 1     |
| And the general average Cost of an Inmate for the week was - | 4/10 | 2.  | 1 1/2 |
| Average cost in Infirmary, - - - - -                         | 4/7  | 2.  | 10    |
| Average cost in Fever Hospital, - - - - -                    | 1/8  | 3.  | 7     |

The Master's estimate of Provisions and Necessaries required for the ensuing week was examined and Orders were duly made for the several articles specified, namely:

|  |   |
|--|---|
| <p>520 lbs Bread<br/>64 " Meal<br/>528 qts Milk<br/>1 bush Salt<br/>64 qts Tea<br/>16 lbs Sugar<br/>4 " Rice</p> | <p>1 lb Turpentine<br/>4 pints Whisky<br/>3 Bottles Potash<br/>6 lbs Candles<br/>2 " Potash<br/>2 " Mould Candles</p> |
|--|---|

The following Books were also produced by the Clerk, their accuracy having been previously ascertained by him, and authenticated by his signature:

1. The several Clothing Accounts.
2. The Medical Officers' Books.

The Out-door Relief Lists and Weekly Receipt and Expenditure Books of the several Relieving Officers were then produced by the Clerk, their accuracy having been previously ascertained by him, and authenticated by his signature.

The Abstract of the Out-door Relief Lists was also produced by the Clerk, having been duly entered up by him for the last week ended Saturday, the day of ; whereby it appeared that in that week the Total Expenditure in Out-door Relief was

|                     | £ | s. | d. |
|---------------------|---|----|----|
| In money, - - - - - |   |    |    |
| In kind, - - - - -  |   |    |    |
| Total, - - - - -    |   |    |    |

Credit each Relieving Officer, as per Receipt and Expenditure Book.

The requirements of each Relieving Officer for the ensuing week having been duly considered and estimated by the Board, checks on the Treasurer and orders on Contractors, were duly signed and delivered to each of them, of the following amounts and value, respectively:

| RELIEF DISTRICT. | Name of Relieving Officer. | By Check on Treasurer.<br>£ s. d. | By Order on Contractors. |                   | RELIEF DISTRICT. | Name of Relieving Officer. | By Check on Treasurer.<br>£ s. d. | By Order on Contractors. |                   |
|------------------|----------------------------|-----------------------------------|--------------------------|-------------------|------------------|----------------------------|-----------------------------------|--------------------------|-------------------|
|                  |                            |                                   | Article and quantity.    | Value.<br>£ s. d. |                  |                            |                                   | Article and quantity.    | Value.<br>£ s. d. |
| No. I.           |                            |                                   |                          |                   | Bt. forward      |                            |                                   |                          |                   |
| No. II.          |                            |                                   |                          |                   | No. X.           |                            |                                   |                          |                   |
| No. III.         |                            |                                   |                          |                   | No. XI.          |                            |                                   |                          |                   |
| No. IV.          |                            |                                   |                          |                   | No. XII.         |                            |                                   |                          |                   |
| No. V.           |                            |                                   |                          |                   | No. XIII.        |                            |                                   |                          |                   |
| No. VI.          |                            |                                   |                          |                   | No. XIV.         |                            |                                   |                          |                   |
| No. VII.         |                            |                                   |                          |                   | No. XV.          |                            |                                   |                          |                   |
| No. VIII.        |                            |                                   |                          |                   | No. XVI.         |                            |                                   |                          |                   |
| No. IX.          |                            |                                   |                          |                   | No. XVII.        |                            |                                   |                          |                   |
| Car. forwd.      |                            |                                   |                          |                   | TOTAL,           |                            |                                   |                          |                   |

Credit Treasurer with Checks.

Debit each Relieving Officer with Checks and Orders.

On the Report and recommendation of the Finance Committee the following Bills having been duly examined, and found to be correct, and in accordance with the several Orders were directed to be paid, and Checks for the several amounts were duly drawn on the Treasurer and Signed, namely:

1. Clothing Account. £ s. d.

| £ | s. | d. |
|---|----|----|
|   |    |    |

Debit Clothing Account and Credit Treasurer with the several sums as above

2. Establishment Account.

| £ | s. | d. |
|---|----|----|
|   |    |    |

Debit Establishment Account and Credit Treasurer with the several sums as above.



3. Workhouse Invoice Account.

|                                  |    |    |    |
|----------------------------------|----|----|----|
| May Money for proceeds to 27 Dec | £  | s. | d. |
|                                  | 19 | 8  | 3  |

Debit Workhouse Invoice Account and Credit Treasurer with the several sums as above.

4. Out-door Relief Invoice Account.

|  |   |    |    |
|--|---|----|----|
|  | £ | s. | d. |
|  |   |    |    |

Credit Treasurer and Debit Out-door Relief Invoice Account with the several sums as above.

The Clerk's Report of Vaccination was read - (this on the first meeting in every month.) - Number of successful cases.

The Report of the Visiting Committee was read, and Orders were made thereon as follows:

Galway County Council Archives

The following Cheques was ordered

Annua Allowance for Milk to 29<sup>th</sup> Sept 1856 55.8.7

The Reports of the Master and other Officers were read and Orders made thereon as follows:

The Medical Officer reports that the Milk examined by him last week was very bad -

The Master reports the quality of Milk supplied last week was inferior and he cautions the Committee. He requests to be instructed what he will do in the event of an inferior quality being again supplied. He begs to state that Mr. John P. J. recommended him to purchase butter and 2 1/2 whey in lieu of 1/2 pint of milk

Ordered that Butter be supplied -



The following Orders of the Poor Law Commissioners were laid before the Board, and directions given thereon, as follows

The following Letters from the Poor Law Commissioners and others were read by the Clerk, and directions given to answer them respectively, to the following effect, or Orders made on them respectively as follows:

The following explanation was received from the Apothecary, with a reference to the Comptroller's letter of the 28<sup>th</sup> Jan'y 1837

Jan 5<sup>th</sup> Feb'y 1837

gentlemen.

In reply to your report upon an explanation regarding Dr Brodie's report on the irregularity of the Surgery. They state that occasionally, indeed there were bottles in the Surgery without stoppers. Some containing medicine others not. The greater part of these bottles were sent here from some years ago from the Cholera and Fever Hospital at St. James and the Chads at Faint Hill, and were never used in the Surgery. Others were in daily use and fresh medicine supplied to them almost every second or third day. But there were no stoppers or corks for them in the Surgery nor are there any corks or spare stoppers in it up to this moment. but they have been supplied with stoppers from other bottles since Dr Brodie's last report. They vouch that never had any

authority to apply to your Board for Surgery, Aquatics the Supplies were always had at the Dispensary of the Medical Office - This has been the first complaint against me since my appointment now ten years and as far as I am concerned Dr Brodie will not get cause to report any irregularities in future.

I am gentlemen  
yours Obedient  
Servant  
James Gill



The cases of provisionat relief, and applications for relief were considered and decided on, as set forth in the Application and Report Books.

The number of provisionat admissions to the Workhouse confirmed was . . . . . 5

Ditto disallowed . . . . . 6

The number of applicants admitted to the Workhouse was . . . . .

The number of cases of provisionat Out-door relief was . . . . .

Do. do. in which relief was continued by the Guardians . . . . .

The number of other applicants in the Relieving Officer's Books relieved by order of the Guardians was . . . . .

The number of applicants for whom relief was not ordered

The Bonds and other securities in force were laid before the Guardians by the Clerk, together with his Report thereon, as follows: (this on the second Meeting after the Annual Election in every year.)

Resolved that the Commissioners be requested to direct Dr Gray, M.D. to inspect the Dispensary at Longhospur, in the Galvagh Union and report on the propriety of changing it from a Lane House without shelter of any kind to the Village of Ardaraun where it always used to be held.

Resolved that Leases be received for erecting a shed in the General Probationary Yard for the use of Dispensary Patients. particulars will be shown on application to the Clerk or Master.

Resolved that Martin O'Keefe's Salary be £12.10 as Relieving Officer instead of £10.0.0

Ordered that Michael Caulfield be transferred from Ardaraun E. Division to the Union at large



The following Accounts of Expenses, (or Statement of Salaries due as the case may be,) under the Medical Charities Act, were laid before the Board, and Directions were given for Payment thereof (or such other directions as may be given:)

Dispensary District, \_\_\_\_\_  
Account of Mr. \_\_\_\_\_ for \_\_\_\_\_: Amount £ \_\_\_\_\_

An Account of the Expenses incurred for the service of each Dispensary District in the Union, for the half-year ended \_\_\_\_\_ 1853, having been submitted to the Board, the Clerk was directed to furnish to the Committee of each Dispensary District a statement of all the Expenses of the District which have been included in the half-year's accounts. The following is the total Expense incurred for each Dispensary District for the half-year ended \_\_\_\_\_ 1853.

|                |         |
|----------------|---------|
| _____ District | _____ £ |
| _____ District | _____ £ |

[This at the end of each half-year, in pursuance of Articles 28 and 29 of the General Rules for Dispensary Districts, dated 16th December, 1853.]

Galway County Council

[This to be entered on the occasion of every appointment of a new Committee, after the annual Election of Guardians, and on the occasion of any election to fill any vacancies in a Dispensary Committee].  
The Board elected the following Rate-payers to be Members of the Committees of Management of the following Dispensary Districts, respectively:—the Clerk to make a Return accordingly to the Poor Law Commissioners, and to issue the prescribed Notification to the Members elected, and to the Medical Officers of the respective Dispensary Districts in pursuance of Articles 1, 2, and 3, of the General Regulations for Dispensary Districts.—The Clerk was also directed to supply Check Books of Medical Relief Tickets, (Forms B 1 and B 2,) in pursuance of Article 27 of the Dispensary Regulations, to the new Members of the Committees; namely:—

Dispensary District, Mr. \_\_\_\_\_ of \_\_\_\_\_  
It was then proposed by Henry Saffery seconded by Arthur Alexander, Esq. that the Medical Officers Salaries be fixed at £80 per annum and not to interfere with the Apothecaries

The Chairman declined to put that resolution —  
Arthur Alexander & Saffery proposed to put the original resolution fixing the Salaries at £90 per annum to the Board which the Chairman declined to do —

Mr Alexander then handed in the following protest  
Protest against Capt Taylor's resolution as being illegal he should not introduce the Apothecaries (who are not mentioned in the Commis' Rules) on their appointed day & not fixing the Salaries as required by the 13<sup>th</sup> Article of the Commissioners Rules  
Signed Arthur Alexander

The following Orders of the Poor Law Commissioners under the Medical Charities Act, were laid before the Board and directions given thereon as follows:

Order dated \_\_\_\_\_ (state subject)



The following Letters on matters arising under the Medical Charities Act or the Nuisances Removal and Diseases Prevention Acts, from the Poor Law Commissioners and others were read by the Clerk, and directions given to answer them respectively, to the following effect (or Orders were made on them respectively as follows:)

Read Letter from \_\_\_\_\_ dated \_\_\_\_\_ stating that \_\_\_\_\_

The Letter of the Poor Law Commissioners of the 20<sup>th</sup> January 1857 respecting the Board to consider this Resolution, of the 1<sup>st</sup> January, fixing the Salaries of the Medical Officers of God and Ballinacorney Dispensary Districts at £80 per annum having been read

It was proposed by Arthur Alexander Esq. seconded by Mr Nolan Esq. that the Salaries of each Medical Officer be fixed at £90

It was proposed by Capt Taylor seconded by Mr O'George Esq. that the Salaries of the Medical Officers of Shinan and God Workhouse and Dispensaries be increased to £90 per annum on Condition they take on themselves the Compounding of the Medicines

Several Guardians protested against the legality of this resolution stating that notice should be given as regards the Apothecaries

The Chairman put the resolution to the Board when there appeared for it 5 against 4 declined to vote 3.

Capt Taylor in consequence of the God Workhouse being introduced requested of the Guardians to amend the resolution which was unanimously agreed to

Mr Nolan then requested the Chairman to put the original resolution which he declined to do

Capt Taylor then proposed that the Salaries of the Medical Officers of Shinan and God Dispensaries be increased to £90 per annum on Condition they take on themselves the Compounding of the Medicines

Several Guardians protested against this stating that there should be fourteen days notice as regards the Apothecaries

The Chairman then put this resolution to the Board when there voted for it for it 6

against 5  
declined 2

(Signed)

Clerk of the Union.

Population in 1851 16,287

Present Net Annual Value, £1,053, 13, 0

STATE of the WORKHOUSE for the Week ending Saturday, the

7<sup>th</sup> day of January 1857

| Number of Inmates for which accommodation is provided.        | No. that can be accommodated in each building. | Total No. in each building on the above date. | Able-bodied. |      | Aged and Infirm persons, and adult persons above 15 years of age, but not working. |      | Boys and Girls above 9 and under 15 years of age. |        | Children above 5 and under 9 years of age. | Children above 2 and under 5 years of age. | Infants under 2 years of age. | RETURN OF SICK AND LUNATICS.     |  | OBSERVATIONS. |
|---|--|---|--------------|------|--|------|---|--------|--|--|-------------------------------|----------------------------------|--|---------------|
|   |  |   | Males.       | Fem. | Males.   | Fem. | Boys.   | Girls. |  |  |                               | Total.                           | No. of Lunatics and Idiots in Workhouse on the above date. |               |
| Workhouse, . . . . .  | 1150   | 170   |              |      |  |      |   |        |  |  |                               |                                  |  |               |
| Temporary Buildings, . . . . .                                | 700  | 5   |              |      |  |      |   |        |  |  |                               |                                  |  |               |
| Additional Workhouse, . . . . .                               | 50   | 5   |              |      |  |      |   |        |  |  |                               |                                  |  |               |
| Permanent Fever Hospital, . . . . .                           | 50   | 5   |              |      |  |      |   |        |  |  |                               |                                  |  |               |
| Fever Sheds, . . . . .  | 50   | 5   |              |      |  |      |   |        |  |  |                               |                                  |  |               |
| Total, . . . . .  | 1900   | 175   |              |      |  |      |   |        |  |  |                               |                                  |  |               |
| Remaining on previous Saturday, as per last Return, . . . . . |  |   | 27           | 6    | 12   | 22   | 11  | 5      | 16   | 7  | 174                           | In Workhouse Hospital, . . . . . | In separate Wards, . . . . .                               |               |
| Admitted during the Week, . . . . .                           |  |   | 4            | 8    |  |      |   |        |  |  | 113                           | In Fever Hospital, . . . . .     | In Wards with other Inmates, . . . . .                     |               |
| TOTAL, . . . . .  |  |   | 31           | 14   | 12   | 22   | 11  | 6      | 16   | 15   | 187                           | Total, . . . . .                 | Total, . . . . .   |               |
| Discharged during the Week, . . . . .                         |  |   | 2            | 6    |  |      |   |        |  |  | 18                            |                                  |  |               |
| Died, . . . . .   |  |   | 1            | 1    | 2  |      |   |        |  |  | 4                             |                                  |  |               |
| Total Discharged and Died, . . . . .                          |  |   | 3            | 7    | 2  |      |   |        |  |  | 22                            |                                  |  |               |
| REMAINING ON THE ABOVE DATE, . . . . .                        |  |   | 29           | 13   | 10   | 22   | 11  | 5      | 16   | 13   | 175                           |                                  |  |               |

RETURN of DESTITUTE PERSONS relieved out of the Workhouse, as by Relief Lists, for the last Week ended Saturday, the \_\_\_\_\_ day of \_\_\_\_\_ authenticated and laid before the Board of Guardians at this Meeting.

| RELIEF DISTRICT. | Destitute Persons relieved out of the Workhouse, under 10 Vict. c. 31, s. 1. |   | Destitute Persons relieved out of the Workhouse, but not comprised in Sec. 1. |   | Total relieved out of the Workhouse. |          | RELIEF DISTRICT. | Destitute Persons relieved out of the Workhouse, under 10 Vict. c. 31, s. 1. |   | Destitute Persons relieved out of the Workhouse, but not comprised in Sec. 1. |   | Total relieved out of the Workhouse. |          |
|------------------|--|---|---|---|--------------------------------------|----------|------------------|--|---|---|---|--------------------------------------|----------|
|                  | Number of cases relieved.  | Number of Persons, including Applicant and Family, dependent on him or her. | Number of cases relieved.   | Number of Persons, including Applicant and Family, dependent on him or her. | Cases.                               | Persons. |                  | Number of cases relieved.  | Number of Persons, including Applicant and Family, dependent on him or her. | Number of cases relieved.   | Number of Persons, including Applicant and Family, dependent on him or her. | Cases.                               | Persons. |
| No. I.           |  |   |   |   |                                      |          | Bt. forward      |  |   |   |   |                                      |          |
| No. II.          |  |   |   |   |                                      |          | No. X.           |  |   |   |   |                                      |          |
| No. III.         |  |   |   |   |                                      |          | No. XI.          |  |   |   |   |                                      |          |
| No. IV.          |  |   |   |   |                                      |          | No. XII.         |  |   |   |   |                                      |          |
| No. V.           |  |   |   |   |                                      |          | No. XIII.        |  |   |   |   |                                      |          |
| No. VI.          |  |   |   |   |                                      |          | No. XIV.         |  |   |   |   |                                      |          |
| No. VII.         |  |   |   |   |                                      |          | No. XV.          |  |   |   |   |                                      |          |
| No. VIII.        |  |   |   |   |                                      |          | No. XVI.         |  |   |   |   |                                      |          |
| No. IX.          |  |   |   |   |                                      |          | No. XVII.        |  |   |   |   |                                      |          |
| Car. forward     |  |   |   |   |                                      |          | TOTAL,           |  |   |   |   |                                      |          |

COPY of MINUTES of Proceedings of the Board of Guardians, at a Meeting held on \_\_\_\_\_ the \_\_\_\_\_ day of \_\_\_\_\_ 1857

PRESENT: In the Chair, James Cahiff.  
 Other Guardians: Amy Cahiff, Amy Blaymore, Patrick Burke, P. J. D.

The Minutes of last Meeting were read and Signed.



Notices of Marriage between the parties hereunder named having been received from the District Registrar by the Clerk, were duly read at the Board this day in accordance with the 15th section of the 7 & 8 Vic., c. 81.

The Workhouse Register was produced, examined, and authenticated, from No. 241 to No. 277, both inclusive, by the signature of the Chairman, and countersignature of the Clerk.

The Out-door Relief Register was produced, examined, and authenticated from No. \_\_\_\_\_ to No. \_\_\_\_\_, inclusive, by the signature of the Chairman and countersignature of the Clerk.

The Clerk's Report on the execution of Orders previously made by the Board was read, to the following effect:

The Ledger was produced by the Clerk, posted up to the last day of Meeting, with the proper Debits and Credits, as ordered on that day.

The Treasurer's Book of Receipts and Payments was produced, by which it appeared that there had been received during the week, - - - - - £1 - - - - -

Paid during the week, - - - - - £32. 16. 5

And that the Balance on the Account the Guardians was - £144. 5. 1

The Book was signed by the Chairman.

The Weekly balance-sheets of the several Collectors were laid before the Board, their accuracy having been first ascertained and authenticated by the Clerk.

The Lodgments made of Rates collected in the several Electoral Divisions appear to have been as follows:—

| Name of each Collector. | Electoral Divisions arranged in Collectors' Districts. | Collected and Lodged. |    |    | Total. |    |    | Remaining. |    |    | Total. |    |    |  |  |
|-------------------------|--|-----------------------|----|----|--------|----|----|------------|----|----|--------|----|----|--|--|
|                         |  | £                     | s. | d. | £      | s. | d. | £          | s. | d. | £      | s. | d. |  |  |
| Thomas Harwood          | Abraham  |                       |    |    |        |    |    |            |    |    |        |    |    |  |  |
|                         | Burrough   |                       |    |    |        |    |    |            |    |    |        |    |    |  |  |
|                         | Burrough   |                       |    |    |        |    |    |            |    |    |        |    |    |  |  |
|                         | Burrough   |                       |    |    |        |    |    |            |    |    |        |    |    |  |  |
|                         | Burrough   |                       |    |    |        |    |    |            |    |    |        |    |    |  |  |
|                         | Burrough   |                       |    |    |        |    |    |            |    |    |        |    |    |  |  |
|                         | Burrough   |                       |    |    |        |    |    |            |    |    |        |    |    |  |  |
|                         | Burrough   |                       |    |    |        |    |    |            |    |    |        |    |    |  |  |
|                         | Burrough   |                       |    |    |        |    |    |            |    |    |        |    |    |  |  |
|                         | Burrough   |                       |    |    |        |    |    |            |    |    |        |    |    |  |  |
|                         | Burrough   |                       |    |    |        |    |    |            |    |    |        |    |    |  |  |
| Michael Taylor          | Abraham  |                       |    |    |        |    |    |            |    |    |        |    |    |  |  |
|                         | Abraham  |                       |    |    |        |    |    |            |    |    |        |    |    |  |  |
|                         | Abraham  |                       |    |    |        |    |    |            |    |    |        |    |    |  |  |
|                         | Abraham  |                       |    |    |        |    |    |            |    |    |        |    |    |  |  |
| Edward Stanton          | Abraham  |                       |    |    |        |    |    |            |    |    |        |    |    |  |  |
|                         | Abraham  |                       |    |    |        |    |    |            |    |    |        |    |    |  |  |
|                         | Abraham  |                       |    |    |        |    |    |            |    |    |        |    |    |  |  |
| Total                   |  |                       |    |    |        |    |    |            |    |    |        |    |    |  |  |
|                         |  |                       |    |    |        |    |    |            |    |    |        |    |    |  |  |
| Thomas Harwood          | Abraham  |                       |    |    |        |    |    |            |    |    |        |    |    |  |  |
|                         | Abraham  |                       |    |    |        |    |    |            |    |    |        |    |    |  |  |
|                         | Abraham  |                       |    |    |        |    |    |            |    |    |        |    |    |  |  |
|                         | Abraham  |                       |    |    |        |    |    |            |    |    |        |    |    |  |  |
|                         | Abraham  |                       |    |    |        |    |    |            |    |    |        |    |    |  |  |
| Comelia O'Brien         | Abraham  |                       |    |    |        |    |    |            |    |    |        |    |    |  |  |
|                         | Abraham  |                       |    |    |        |    |    |            |    |    |        |    |    |  |  |
| P. O'Connell            | Abraham  |                       |    |    |        |    |    |            |    |    |        |    |    |  |  |
|                         | Abraham  |                       |    |    |        |    |    |            |    |    |        |    |    |  |  |

NOTE.—A total is to be inserted in Red Ink at the foot of each Collector's District, as well as for the entire Union. Debit the Treasurer and Credit the several Electoral Divisions with the respective amounts lodged.



The Clerk's Account of petty Disbursements made by him since last Meeting, amounting to £ was produced and passed.

The following Books were exhibited by the Clerk, he having first ascertained the accuracy of the entries made therein by the Master of the Workhouse, and authenticated the same by his signature:

1. The Weekly Relief List and Abstract.
2. The Provision Check Accounts.
3. The Provision Receipt and Consumption Account.

By which it appeared that the Cost of Provisions and Necessaries received during the week was £15 1 s. 7 d.

|  |                                  |
|--|----------------------------------|
| Debit Provision Account, and Credit Invoice Account.         | £ s. d.                          |
| The Cost of Provisions and Necessaries consumed was - -      | 15 . 1 . 7                       |
| Debit Maintenance Account, and Credit Provision Account.     |                                  |
| And the general average Cost of an Inmate for the week was - | 21 . 10 . 8                      |
| Average cost in Infirmary, - - - -                           | 2/11 <sup>3</sup> / <sub>4</sub> |
| Average cost in Fever Hospital, - - - -                      | 2/10                             |
|  | 3/6                              |

The Master's estimate of Provisions and Necessaries required for the ensuing week was examined and Orders were duly made for the several articles specified, namely:

520 lbs Bread  
64 " Meat  
1 Lon Indian Meal  
540 qts of new Milk  
1 cwt Salt  
64 3 Tea

16 lbs Sugar  
2 " Rice  
1 " Pepper  
2 pints Whiskey  
2 Bottles Porter  
6 lbs Candles

The following Books were also produced by the Clerk, their accuracy having been previously ascertained by him, and authenticated by his signature:

1. The several Clothing Accounts.
2. The Medical Officers' Books.

The Out-door Relief Lists and Weekly Receipt and Expenditure Books of the several Relieving Officers were then produced by the Clerk, their accuracy having been previously ascertained by him, and authenticated by his signature.

The Abstract of the Out-door Relief Lists was also produced by the Clerk, having been duly entered up by him for the last week ended Saturday, the day of ; whereby it appeared that in that week the Total Expenditure in Out-door Relief was

|                   |         |
|-------------------|---------|
| In money, - - - - | £ s. d. |
| In kind, - - - -  |         |
| Total, - - - -    |         |

Credit each Relieving Officer, as per Receipt and Expenditure Book.

The requirements of each Relieving Officer for the ensuing week having been duly considered and estimated by the Board, checks on the Treasurer and orders on Contractors, were duly signed and delivered to each of them, of the following amounts and value, respectively:

| RELIEF DISTRICT. | Name of Relieving Officer. | By Check on Treasurer.<br>£ s. d. | By Order on Contractors. |                   | RELIEF DISTRICT. | Name of Relieving Officer. | By Check on Treasurer.<br>£ s. d. | By Order on Contractors. |                   |
|------------------|----------------------------|-----------------------------------|--------------------------|-------------------|------------------|----------------------------|-----------------------------------|--------------------------|-------------------|
|                  |                            |                                   | Article and quantity.    | Value.<br>£ s. d. |                  |                            |                                   | Article and quantity.    | Value.<br>£ s. d. |
| No. I.           |                            |                                   |                          |                   | Bt. forward      |                            |                                   |                          |                   |
| No. II.          |                            |                                   |                          |                   | No. X.           |                            |                                   |                          |                   |
| No. III.         |                            |                                   |                          |                   | No. XI.          |                            |                                   |                          |                   |
| No. IV.          |                            |                                   |                          |                   | No. XII.         |                            |                                   |                          |                   |
| No. V.           |                            |                                   |                          |                   | No. XIII.        |                            |                                   |                          |                   |
| No. VI.          |                            |                                   |                          |                   | No. XIV.         |                            |                                   |                          |                   |
| No. VII.         |                            |                                   |                          |                   | No. XV.          |                            |                                   |                          |                   |
| No. VIII.        |                            |                                   |                          |                   | No. XVI.         |                            |                                   |                          |                   |
| No. IX.          |                            |                                   |                          |                   | No. XVII.        |                            |                                   |                          |                   |
| Car. forwd.      |                            |                                   |                          |                   | TOTAL,           |                            |                                   |                          |                   |

Credit Treasurer with Checks.

Debit each Relieving Officer with Checks and Orders.

On the Report and recommendation of the Finance Committee the following Bills having been duly examined, and found to be correct, and in accordance with the several Orders were directed to be paid, and Checks for the several amounts were duly drawn on the Treasurer and Signed, namely:

1. Clothing Account.

|                                |         |
|--------------------------------|---------|
|                                | £ s. d. |
| Manti. Accty for Shoes - - - - | 1 10 .  |

Debit Clothing Account and Credit Treasurer with the several sums as above

2. Establishment Account.

|                                      |         |
|--------------------------------------|---------|
|                                      | £ s. d. |
| Shoes, Hats Copy Petit Bills - - - - | 2 9 .   |

Debit Establishment Account and Credit Treasurer with the several sums as above.



3. Warehouse Invoice Account.

|                       | £ | s. | d. |
|-----------------------|---|----|----|
| Patrick Dwyer for Inf | 3 | 18 | 4  |
| John Longhuan do      | 3 | 13 | 10 |

Debit Warehouse Invoice Account and Credit Treasurer with the several sums as above.

4. Out-door Relief Invoice Account.

| £ | s. | d. |
|---|----|----|
|   |    |    |

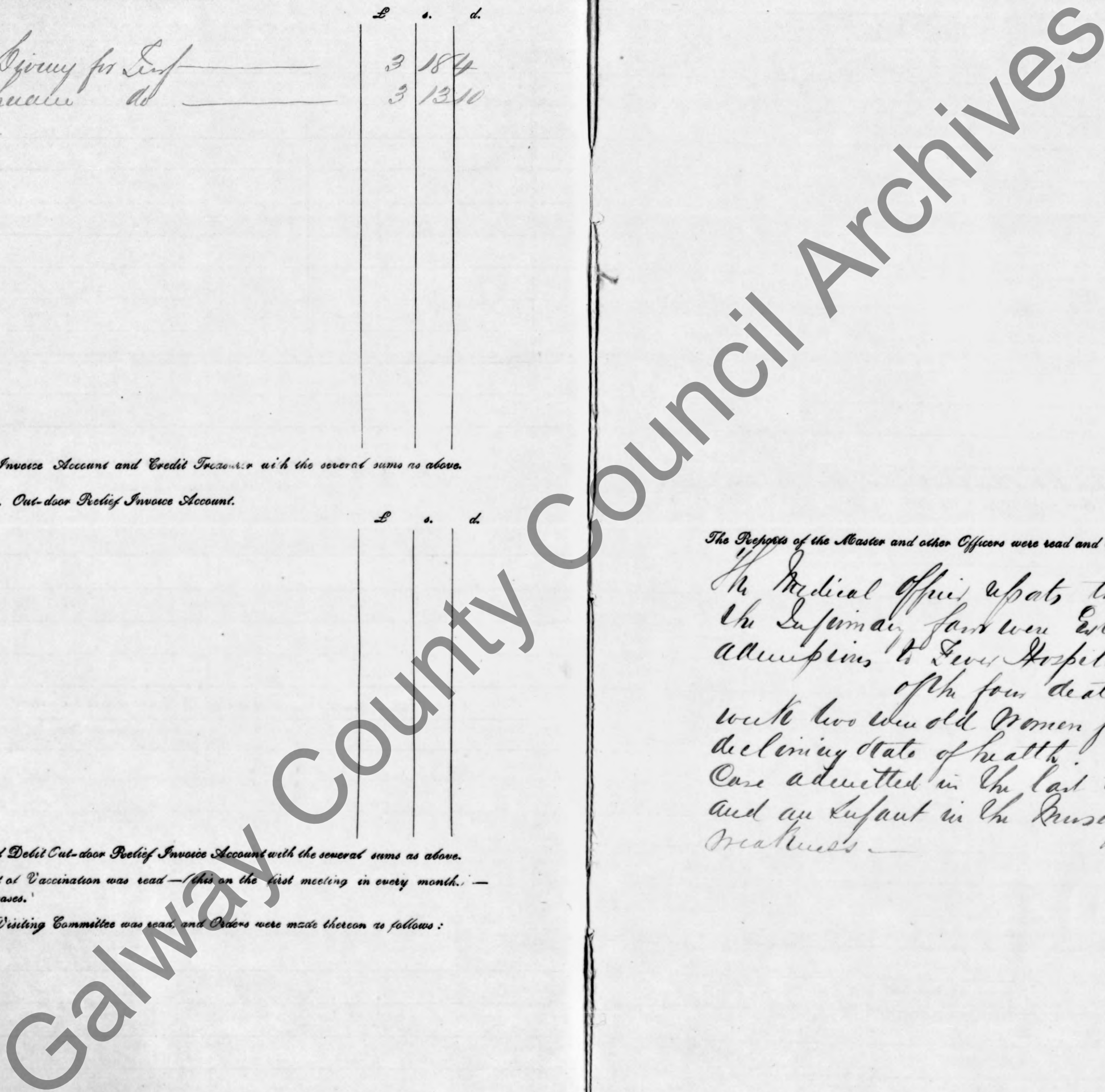
Credit Treasurer and Debit Out-door Relief Invoice Account with the several sums as above.

The Clerk's Report of Vaccination was read - (this on the first meeting in every month.) - Number of successful cases.

The Report of the Visiting Committee was read, and Orders were made thereon as follows:

The Reports of the Master and other Officers were read and Orders made thereon as follows:

The Medical Officer reports that of 10 admissions to the Infirmary, four were Extern Cases and the three admissions to Fever Hospital were all Extern Cases of the four deaths that occurred last week two were old women for a long time in a declining state of health. There was also an Extern Case admitted in the last stage of Dumb Ague and an Infant in the Nursery died from Constitutional weakness.





The cases of provisional relief, and applications for relief were considered and decided on, as set forth in the Application and Report Books.

The number of provisional admissions to the Workhouse confirmed was - - - 7

Ditto disallowed - - - - - 6

The number of applicants admitted to the Workhouse was - - - - -

The number of cases of provisional Out-door relief was - - - - -

Do. do. in which relief was continued by the Guardians - - - - -

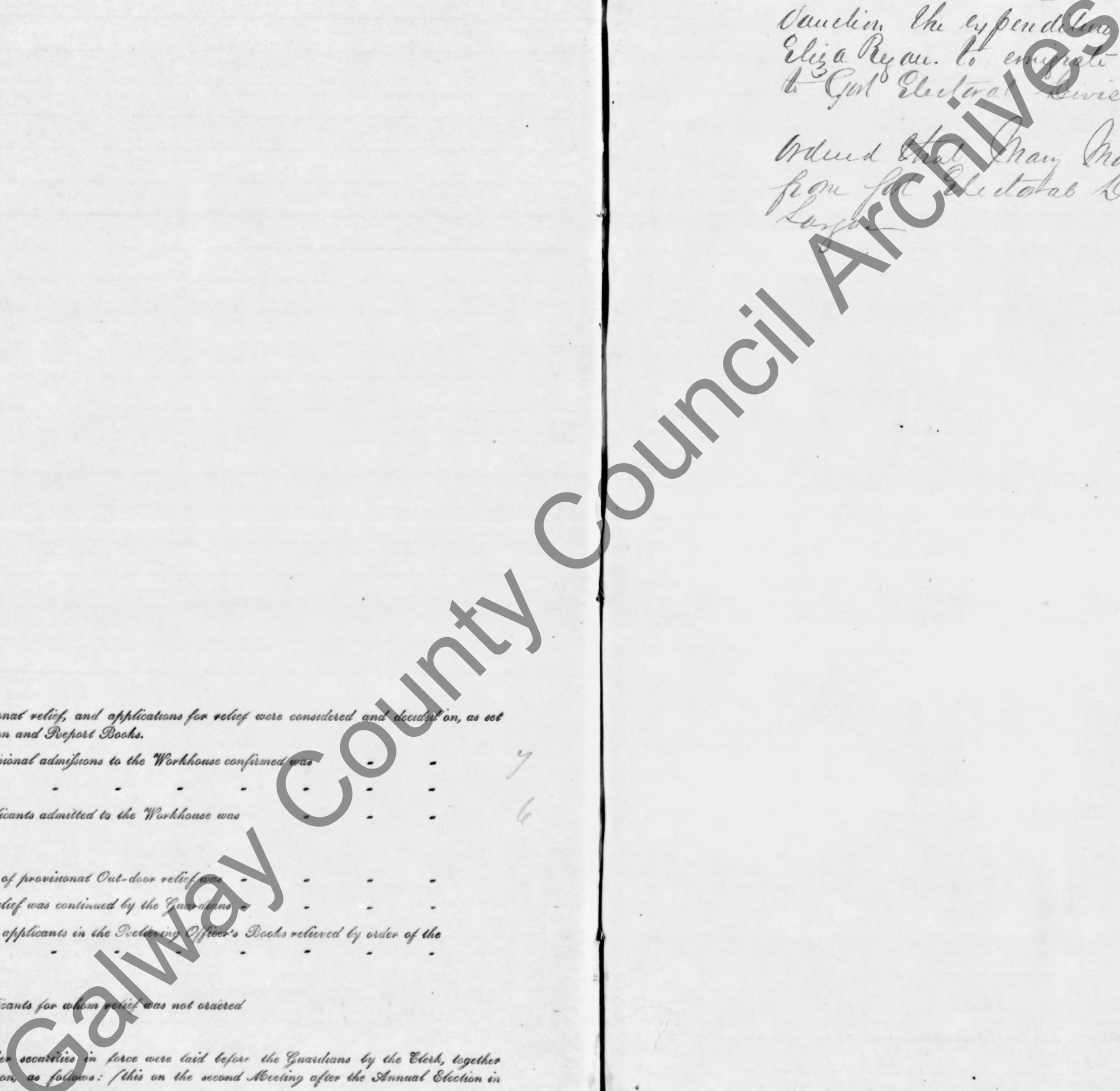
The number of other applicants in the Relieving Officer's Books relieved by order of the Guardians was - - - - -

The number of applicants for whom relief was not ordered

The Bonds and other securities in force were laid before the Guardians by the Clerk, together with his Report thereon, as follows: (this on the second Meeting after the Annual Election in every year.)

Resolved that the Commissioners be requested to sanction the expenditure of Three pounds to assist Eliza Ryan. to emigrate to America Chargeable to the Poor Electoral Division

Ordered that Mary Martyn be transferred from the Electoral Division of the Union at Lough





14 and 15 Vic., c. 68 }  
[No. 27.] }

MINUTES OF PROCEEDINGS of the BOARD of GUARDIANS of the \_\_\_\_\_  
UNION, on \_\_\_\_\_ day, the \_\_\_\_\_ day of \_\_\_\_\_ 185\_\_\_\_.  
—continued.

SUPPLEMENTAL SHEET :—MEDICAL CHARITIES ACT, 14 & 15 Vic., cap. 68; and  
NUISANCES REMOVAL AND DISEASES PREVENTION ACTS, 1848 & 1849.

*An Estimate of Medicines, &c., required by the Medical Officer of the \_\_\_\_\_  
Dispensary District, approved by the Committee of Management, was laid before the Board, with a  
Requisition from the Committee for the supply of the same, and Directions were given thereon  
as follows:*

*An Invoice of Medicines forwarded by the Contractor, for the \_\_\_\_\_  
Dispensary District, in pursuance of an Order of the Board in their Minutes of \_\_\_\_\_  
having been received from him, the Clerk laid the Invoice before the Board, and (was directed to  
forward the same, or reported that he had forwarded the same, as the case may be,) to the Medical  
Officer of the District, retaining a Copy of the Invoice for the use of the Guardians.*

*On application of the Committee of Management of the \_\_\_\_\_  
Dispensary District, the following supplies of Books, Stationery, Forms, or other requisites were  
ordered to be supplied:*



The following Letters on matters arising under the Medical Charities Act or the Nuisances Removal and Diseases Prevention Acts, from the Poor Law Commissioners and others were read by the Clerk, and directions given to answer them respectively, to the following effect (or Orders were made on them respectively as follows:)

Resolved that the Commissioners be applied to for liberty to change the site upon which to erect a shed for Dispensary Patients in the Female Probationary Yard at the Workhouse from that part of the yard as described on the plan to the other end of the yard as shown on the same plan forwarded herewith. The Guardians, reason being to make the entrance for patients as near as possible to the outer Gate and not to disfigure the front of the House by opening a door close to the entrance.

Galway County Council

Clerk of the Union.

Population in 1851, 26,287

Present Net Annual Value, £1103.13

STATE of the WORKHOUSE for the Week ending Saturday, the 14<sup>th</sup> day of February 1857.

| Number of Inmates for which accommodation is provided.        | No. that can be accommodated in each building on the above date. | Total No. in each building on the above date. | Able-bodied. |      |        |      |       |        |  | Aged and Infirm persons, and adult persons, above 15 years of age, but not working. |                               |        | Boys and Girls above 9 and under 15 years of age. |  |                              | Children above 9 and under 9 years of age. |  |  | Infants under 2 years of age. |    |        | RETURN OF SICK AND LUNATICS. |  | OBSERVATIONS. |
|---|--|---|--------------|------|--------|------|-------|--------|--|---|-------------------------------|--------|---|--|------------------------------|--|--|--|-------------------------------|----|--------|------------------------------|--|---------------|
|   |  |   | Males.       | Fem. | Males. | Fem. | Boys. | Girls. | Children above 9 and under 9 years of age. | Children above 2 and under 9 years of age.  | Infants under 2 years of age. | Total. | Number in Hospital on the above date.             | No. of Lunatics and Idiots in Workhouse on the above date. |                              |  |  |  |                               |    |        |                              |  |               |
| Workhouse, . . . . .  | 115  | 179   |              |      |        |      |       |        |  |   |                               |        |   |  |                              |  |  |  |                               |    |        |                              |  |               |
| Temporary Buildings, . . . . .                                | 700  |   |              |      |        |      |       |        |  |   |                               |        |   |  |                              |  |  |  |                               |    |        |                              |  |               |
| Additional Workhouse, . . . . .                               |  |   |              |      |        |      |       |        |  |   |                               |        |   |  |                              |  |  |  |                               |    |        |                              |  |               |
| Permanent Fever Hospital, . . . . .                           | 50   | 6   |              |      |        |      |       |        |  |   |                               |        |   |  |                              |  |  |  |                               |    |        |                              |  |               |
| Fever Sheds, . . . . .  |  |   |              |      |        |      |       |        |  |   |                               |        |   |  |                              |  |  |  |                               |    |        |                              |  |               |
| Total, . . . . .  | 1905   | 182   |              |      |        |      |       |        |  |   |                               |        |   |  |                              |  |  |  |                               |    |        |                              |  |               |
| Remaining on previous Saturday, as per last Return, . . . . . |  |   | 24           | 63   | 6      | 10   | 22    | 11     | 5  | 16  | 13                            | 175    | In Workhouse Hospital, . . . . .                  | 57   | In separate Wards, . . . . . |  | In Wards with other inmates, . . . . . |  | Total, . . . . .              | 56 | Total, |                              |  |               |
| Admitted during the Week, . . . . .                           |  |   | 6            | 11   |        |      | 1     |        |  |   |                               | 2      |   |  |                              |  |  |  |                               |    |        |                              |  |               |
| TOTAL, . . . . .  |  |   | 35           | 74   | 6      | 10   | 23    | 11     | 5  | 16  | 15                            |        |   |  |                              |  |  |  |                               |    |        |                              |  |               |
| Discharged during the Week, . . . . .                         |  |   | 4            | 7    |        |      |       |        |  |   |                               |        |   |  |                              |  |  |  |                               |    |        |                              |  |               |
| Died, . . . . .   |  |   |              |      |        |      |       |        |  |   |                               |        |   |  |                              |  |  |  |                               |    |        |                              |  |               |
| Total Discharged and Dead, . . . . .                          |  |   | 4            | 7    |        |      |       |        |  |   |                               |        |   |  |                              |  |  |  |                               |    |        |                              |  |               |
| REMAINING ON THE ABOVE DATE, . . . . .                        |  |   | 31           | 67   | 6      | 10   | 23    | 11     | 5  | 16  | 15                            |        |   |  |                              |  |  |  |                               |    |        |                              |  |               |

RETURN of DESTITUTE PERSONS relieved out of the Workhouse, as by Relief Lists, for the last Week ended Saturday, the day of authenticated and laid before the Board of Guardians at this Meeting.

| RELIEF DISTRICT. | Destitute Persons relieved out of the Workhouse under 10 Vict. c. 31, s. 1. |   | Destitute Persons relieved out of the Workhouse, but not comprised in Sec. 1. |   | Total relieved out of the Workhouse. |          | RELIEF DISTRICT. | Destitute Persons relieved out of the Workhouse under 10 Vict. c. 31, s. 1. |   | Destitute Persons relieved out of the Workhouse, but not comprised in Sec. 1. |   | Total relieved out of the Workhouse. |          |
|------------------|---|---|---|---|--------------------------------------|----------|------------------|---|---|---|---|--------------------------------------|----------|
|                  | Number of cases relieved.   | Number of Persons, including Applicant and Family, dependent on him or her. | Number of cases relieved.   | Number of Persons, including Applicant and Family, dependent on him or her. | Cases.                               | Persons. |                  | Number of cases relieved.   | Number of Persons, including Applicant and Family, dependent on him or her. | Number of cases relieved.   | Number of Persons, including Applicant and Family, dependent on him or her. | Cases.                               | Persons. |
| No. I.           |   |   |   |   |                                      |          | Bt. forward      |   |   |   |   |                                      |          |
| No. II.          |   |   |   |   |                                      |          | No. X.           |   |   |   |   |                                      |          |
| No. III.         |   |   |   |   |                                      |          | No. XI.          |   |   |   |   |                                      |          |
| No. IV.          |   |   |   |   |                                      |          | No. XII.         |   |   |   |   |                                      |          |
| No. V.           |   |   |   |   |                                      |          | No. XIII.        |   |   |   |   |                                      |          |
| No. VI.          |   |   |   |   |                                      |          | No. XIV.         |   |   |   |   |                                      |          |
| No. VII.         |   |   |   |   |                                      |          | No. XV.          |   |   |   |   |                                      |          |
| No. VIII.        |   |   |   |   |                                      |          | No. XVI.         |   |   |   |   |                                      |          |
| No. IX.          |   |   |   |   |                                      |          | No. XVII.        |   |   |   |   |                                      |          |
| Car. forward     |   |   |   |   |                                      |          | TOTAL,           |   |   |   |   |                                      |          |

COPY of MINUTES of Proceedings of the Board of Guardians, of a Meeting held on Monday the 17<sup>th</sup> day of February 1857

PRESENT: In the Chair, *James Cahiff*  
 Other Guardians: *Abraham Kay, James Cahiff, Dr. Alexander, P. Fitzpatrick, Patrick Burke, John F. Med, John Brodwin*

The Minutes of last Meeting were read and Signed.



Notices of Marriage between the parties hereunder named having been received from the District Registrar by the Clerk, were duly read at the Board this day in accordance with the 15th section of the 7 & 8 Vic., c. 81.

The Workhouse Register was produced, examined, and authenticated, from No. 37 to No. 57, both inclusive, by the signature of the Chairman, and countersignature of the Clerk.

The Out-door Relief Register was produced, examined, and authenticated from No. to No. inclusive, by the signature of the Chairman and countersignature of the Clerk.

The Clerk's Report on the execution of Orders previously made by the Board was read, to the following effect:

The Ledger was produced by the Clerk, posted up to the last day of Meeting, with the proper Debits and Credits, as ordered on that day.

The Treasurer's Book of Receipts and Payments was produced, by which it appeared that there had been received during the week, - - - - - £99. 8. 4

Paid during the week, - - - - - £90. 16. 7

And that the Balance on the Account in favour of the Guardians was - £20. 0. 5

The Book was signed by the Chairman.

The Weekly balance-sheets of the several Collectors were laid before the Board, their accuracy having been first ascertained and authenticated by the Clerk.

The Lodgments made of Peates collected in the several Electoral Divisions appear to have been as follows:—

| Name of each Collector. | Electoral Divisions arranged in Collectors' Districts. | Collected and Lodged. |    |    | Total. |    |    | Remaining. |       |        | Total. |    |       |
|-------------------------|--|-----------------------|----|----|--------|----|----|------------|-------|--------|--------|----|-------|
|                         |  | £                     | s. | d. | £      | s. | d. | £          | s.    | d.     | £      | s. | d.    |
| Thomas Hardiman         | Ardamultree  | 4                     | 12 | 5  |        |    |    | 16         | 19    | 8      |        |    |       |
|                         | Ballycokalan   | 11                    | 17 | 11 |        |    |    | 37         | 6     | 1      |        |    |       |
|                         | Brough   | 1                     | 6  | 4  |        |    |    | 9          | 17    | 4 1/2  |        |    |       |
|                         | Benniahon  |                       |    |    |        |    |    | 3          | 14    | 11     |        |    |       |
|                         | Bohemon  | 3                     | 17 | 6  |        |    |    | 62         | 2     | 15 1/2 |        |    |       |
|                         | Cuppard  |                       |    |    |        |    |    | 28         | 2     | 10     |        |    |       |
|                         | Dorus  | 1                     | 9  |    |        |    |    | 17         | 10    | 10     |        |    |       |
|                         | Gal  | 17                    | 14 |    |        |    |    | 81         | 17    | 2      |        |    |       |
|                         | Kilbruce   | 28                    | 10 | 1  |        |    |    | 16         | 16    |        |        |    |       |
|                         | Killiney   | 2                     | 5  | 8  |        |    |    | 43         | 15    | 2      |        |    |       |
|                         | Kittaton   | 6                     | 6  | 4  |        |    |    | 37         | 11    | 3      |        |    |       |
|                         | Kittomas   | 3                     | 9  | 1  |        |    |    | 22         | 3     | 8 1/2  |        |    |       |
| Kewara                  |  |                       |    |    |        |    | 43 | 19         | 1 1/2 |        |        |    |       |
|                         |  |                       |    |    | 81     | 8  | 4  |            |       |        | 441    | 18 | 2     |
| Michael Taylor          | Ardrahan   |                       |    |    |        |    |    | 22         | 8     | 7      |        |    |       |
|                         | Castletaylor   | 7                     | 17 | 10 |        |    |    | 31         |       |        |        |    |       |
|                         | Bahoban  | 6                     | 7  | 6  |        |    |    | 47         | 3     | 2      |        |    |       |
|                         | Shanagh  | 3                     | 4  | 8  |        |    |    | 15         | 7     | 7      |        |    |       |
|                         |  |                       |    |    | 18     |    |    |            |       |        | 116    | 9  | 4     |
| Edmond Staunton         | Bunawoo  |                       |    |    |        |    |    | 79         | 8     | 5      |        |    |       |
|                         | Kilmeavan  |                       |    |    |        |    |    | 57         | 8     | 2      |        |    |       |
|                         | Killuly  |                       |    |    |        |    |    | 64         | 7     | 6 1/2  |        |    |       |
|                         |  |                       |    |    |        |    |    |            |       |        | 149    | 7  | 3 1/2 |
|                         | Total  |                       |    |    | 99     | 8  | 4  |            |       |        | 707    | 15 | 3 1/2 |
| Thomas Hardiman         | Kilmeadow  |                       |    |    |        |    |    | 14         | 6     | 2      |        |    |       |
|                         | Brough   |                       |    |    |        |    |    | 159        | 10    | 2 1/2  |        |    |       |
|                         | Kittaton   |                       |    |    |        |    |    | 157        | 0     | 3 1/2  |        |    |       |
|                         | Kittomas   |                       |    |    |        |    |    | 31         | 17    | 3 1/2  |        |    |       |
|                         | Kilmeady   |                       |    |    |        |    |    | 225        | 8     | 3 1/2  | 297    | 2  | 3 1/2 |
| Cornelius O'Brien       | Kewara   |                       |    |    |        |    |    | 152        | 4     | 2 1/2  | 252    | 4  | 2 1/2 |
|                         | Kilmeavan  |                       |    |    |        |    |    | 32         | 15    | 2 1/2  | 32     | 15 | 2 1/2 |
| Edmond Staunton         | Kilmeavan  |                       |    |    |        |    |    | 70         | 19    | 5 1/2  |        |    |       |
|                         | Ardrahan   |                       |    |    |        |    |    | 37         | 4     | 10 1/2 | 108    | 4  | 4     |
| Michael Taylor          | Kilmeavan  |                       |    |    |        |    |    | 139        | 11    | 7 1/2  | 139    | 11 | 7 1/2 |
|                         | Kilmeavan  |                       |    |    |        |    |    |            |       |        |        |    |       |
| P. O'Mahoney            | Kilmeavan  |                       |    |    |        |    |    |            |       |        |        |    |       |
|                         | Kilmeavan  |                       |    |    |        |    |    |            |       |        |        |    |       |
|                         |  |                       |    |    |        |    |    |            |       |        | 830    | 5  | 7 1/2 |

NOTE.—A total is to be inserted in Red Ink at the foot of each Collector's District, as well as for the entire Union.

Debit the Treasurer and Credit the several Electoral Divisions with the respective amounts lodged.



The Clerk's Account of petty Disbursements made by him since last Meeting, amounting to £ was produced and passed.

The following Books were exhibited by the Clerk, he having first ascertained the accuracy of the entries made therein by the Master of the Workhouse, and authenticated the same by his signature:

1. The Weekly Relief List and Abstract.
2. The Provision Check Accounts.
3. The Provision Receipt and Consumption Account.

By which it appeared that the Cost of Provisions and Necessaries received during the week was £28. 10 s. 3 d.

|  |        |     |    |
|--|--------|-----|----|
|  | £      | s.  | d. |
| Debit Provision Account, and Credit Invoice Account.         | 28.    | 10. | 3  |
| The Cost of Provisions and Necessaries consumed was - - -    | 22.    | 0.  | 11 |
| Debit Maintenance Account, and Credit Provision Account.     | 22.    | 0.  | 11 |
| And the general average Cost of an Inmate for the week was - | 2/13/4 |     |    |
| Average cost in Infirmary, - - - - -                         | 2/10/4 |     |    |
| Average cost in Fever Hospital, - - - - -                    | 2/4/2  |     |    |

The Master's estimate of Provisions and Necessaries required for the ensuing week was examined and Orders were duly made for the several articles specified, namely:

530 lbs Bread  
60 .. Meal  
560 qts New Milk  
1 butt Salt  
66 lbs Tea  
16 lbs Sugar  
4 .. Rice

1 lb Pepper  
2 pints Whiskey  
3 bottles Port  
6 lbs Candles  
2 .. Potash

The following Books were also produced by the Clerk, their accuracy having been previously ascertained by him, and authenticated by his Signature:

1. The several Clothing Accounts.
2. The Medical Officers' Books.

The Out-door Relief Lists and Weekly Receipt and Expenditure Books of the several Relieving Officers were then produced by the Clerk, their accuracy having been previously ascertained by him, and authenticated by his signature.

The Abstract of the Out-door Relief Lists was also produced by the Clerk, having been duly entered up by him for the last week ended Saturday, the day of ; whereby it appeared that in that week the Total Expenditure in Out-door Relief was

|                     |   |    |    |
|---------------------|---|----|----|
|                     | £ | s. | d. |
| In money, - - - - - |   |    |    |
| In kind, - - - - -  |   |    |    |
| Total, -            |   |    |    |

Credit each Relieving Officer, as per Receipt and Expenditure Book.

The requirements of each Relieving Officer for the ensuing week having been duly considered and estimated by the Board, checks on the Treasurer and orders on Contractors, were duly signed and delivered to each of them, of the following amounts and value, respectively:

| RELIEF DISTRICT. | Name of Relieving Officer. | By Check on Treasurer.<br>£ s. d. | By Order on Contractors. |                   | RELIEF DISTRICT. | Name of Relieving Officer. | By Check on Treasurer.<br>£ s. d. | By Order on Contractors. |                   |
|------------------|----------------------------|-----------------------------------|--------------------------|-------------------|------------------|----------------------------|-----------------------------------|--------------------------|-------------------|
|                  |                            |                                   | Article and quantity.    | Value.<br>£ s. d. |                  |                            |                                   | Article and quantity.    | Value.<br>£ s. d. |
| No. I.           |                            |                                   |                          |                   | Bt. forward      |                            |                                   |                          |                   |
| No. II.          |                            |                                   |                          |                   | No. X.           |                            |                                   |                          |                   |
| No. III.         |                            |                                   |                          |                   | No. XI.          |                            |                                   |                          |                   |
| No. IV.          |                            |                                   |                          |                   | No. XII.         |                            |                                   |                          |                   |
| No. V.           |                            |                                   |                          |                   | No. XIII.        |                            |                                   |                          |                   |
| No. VI.          |                            |                                   |                          |                   | No. XIV.         |                            |                                   |                          |                   |
| No. VII.         |                            |                                   |                          |                   | No. XV.          |                            |                                   |                          |                   |
| No. VIII.        |                            |                                   |                          |                   | No. XVI.         |                            |                                   |                          |                   |
| No. IX.          |                            |                                   |                          |                   | No. XVII.        |                            |                                   |                          |                   |
| Car. forwd.      |                            |                                   |                          |                   | TOTAL,           |                            |                                   |                          |                   |

Credit Treasurer with Checks.

Debit each Relieving Officer with Checks and Orders.

On the Report and recommendation of the Finance Committee the following Bills having been duly examined, and found to be correct, and in accordance with the several Orders were directed to be paid, and Checks for the several amounts were duly drawn on the Treasurer and Signed, namely:

1. Clothing Account.

|                     |   |    |    |
|---------------------|---|----|----|
|                     | £ | s. | d. |
| John Lynch for Shaw | 1 | 15 | 3  |

Debit Clothing Account and Credit Treasurer with the several sums as above

2. Establishment Account.

|                                |   |    |    |
|--------------------------------|---|----|----|
|                                | £ | s. | d. |
| James Slater School Requisites | 1 | 15 |    |
| James Slater Petrol Bills      | 1 | 10 |    |

Debit Establishment Account and Credit Treasurer with the several sums as above.



3. Workhouse Invoice Account.

|                         | £ | s. | d. |
|-------------------------|---|----|----|
| Bridget Hoarty for Soap | 2 | 6  |    |
| John Hoarty for Soap    |   |    |    |

Debit Workhouse Invoice Account and Credit Treasurer with the several sums as above.

4. Out-door Relief Invoice Account.

|  | £ | s. | d. |
|--|---|----|----|
|  |   |    |    |

Credit Treasurer and Debit Out-door Relief Invoice Account with the several sums as above.

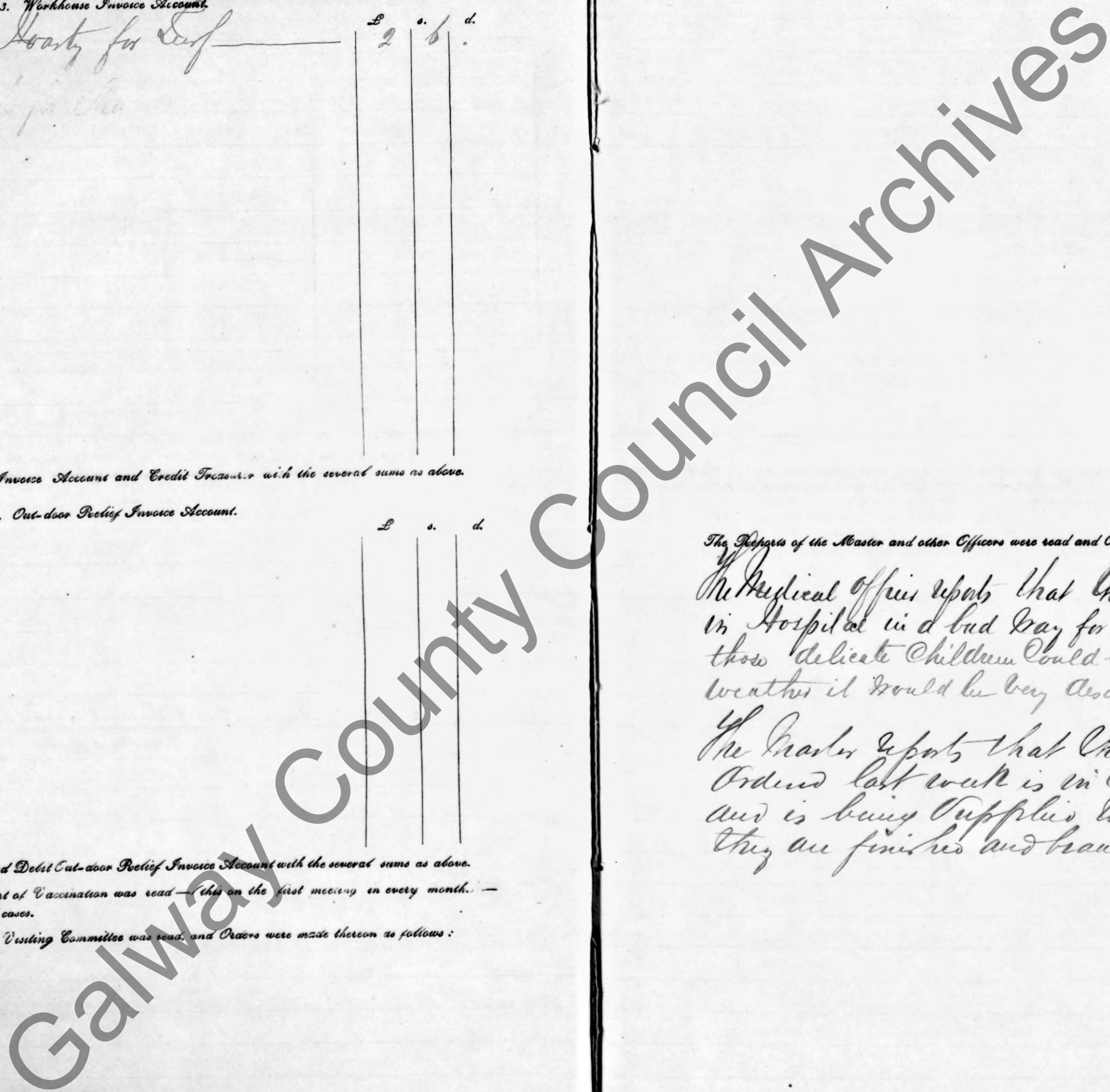
The Clerk's Report of Vaccination was read — this on the first meeting in every month. — Number of successful cases.

The Report of the Visiting Committee was read, and Orders were made thereon as follows:

The Reports of the Master and other Officers were read and Orders made thereon as follows:

The Medical Officer reports that there are some of the Boys in Hospital in a bad way for want of clothing and if those delicate Children could be served this cold damp weather it would be very desirable —

The Master reports that the clothing material ordered last week is in course of preparation and is being supplied to the classes when they are finished and handed —





The following Orders of the Poor Law Commissioners were laid before the Board, and directions given thereon, as follows

The following Letters from the Poor Law Commissioners and others were read by the Clerk, and directions given to answer them respectively, to the following effect, or Orders made on them respectively as follows:

Letter from Poor Law Commissioners  
18<sup>th</sup> February 1837. No. 2694. 1837 giving their sanction to the proposed increase in Martin Leckham's Salary from £10 to £12. 10/- per Annum and wishing to be informed if said Resolution was passed unanimously.

The Resolution was passed unanimously.

Letter from same 18<sup>th</sup> February. No. 2694. 1837 referring to the explanation received from the Apothecary and stating that if the Medical Officer and Apothecary do not cooperate to such extent as is necessary other notice must be taken of the matter.

10<sup>th</sup> Union  
19<sup>th</sup> February 1837.

Gentlemen

They have to apply for Compensation for my duties and expenses under the Parliamentary Votes Act for the year 1836. and I hope you will bear in mind that in consequence of the Union being composed of parts of two Counties I am obliged to make out votes lists for each and attend Revision Sessions in both and thereby put to more trouble and expense than any Union block in either.

Your faithful  
servant  
James Slater Esq

Ordered that Twenty pounds be paid for the above duties.



The cases of provisional relief, and applications for relief were considered and decided on, as set forth in the Application and Report Books.

|   |   |   |   |   |
|---|---|---|---|---|
| The number of provisional admissions to the Workhouse confirmed was | - | - | - | 8 |
| Ditto disallowed  | - | - | - | - |
| The number of applicants admitted to the Workhouse was              | - | - | - | 8 |

|   |   |   |   |   |
|---|---|---|---|---|
| The number of cases of provisional Out-door relief was  | - | - | - | - |
| Do. do. in which relief was continued by the Guardians  | - | - | - | - |
| The number of other applicants in the Relieving Officers Books relieved by order of the Guardians was | - | - | - | - |

The number of applicants for whom relief was not ordered

The Bonds and other securities in force were laid before the Guardians by the Clerk, together with his Report thereon, as follows: (this on the second Meeting after the Annual Election in every year.)

The Board accepted the tender of Thomas Lavelle for supplying the Workhouse with Lard at 1/3 p lb —

The Board accepted the tender of Michael Crowe for supplying the Workhouse with Lard at 7/3 p lb —

The abstracts of the Union Accounts for the past half year as audited by James Martin Esq were laid before the Board, approved of, and signed by the Chairman: —



The following Letters on matters arising under the Medical Charities Act or the Nuisances Removal and Diseases Prevention Acts, from the Poor Law Commissioners and others were read by the Clerk, and directions given to answer them respectively, to the following effect (or Orders were made on them respectively as follows):

Read Letter from Thomas Commisarius dated 12<sup>th</sup> February stating that

No. 3694. 1857. Stating that a fourteen days notice is necessary previous to the proceedings ~~at the~~ with the views of the Apothecaries and the Commissioners request the Guardians will again take the subject into consideration

Letter from same 18<sup>th</sup> February No. 3694/57 referring to the proposed change in the Dispensary from Sanforymapulla to Ardrahan and stating that the Commissioners think that no advantage would on the whole be gained by the proposed change

Letter from same 18<sup>th</sup> February No. 4213. 1857 stating that if the Guardians do not think the proposed change in the meeting ~~has~~ disband from the site for Dispensary ~~the~~ (the Commissioners) do not object to the change

Galway County

Clerk of the Union.

Population in 1851 26,257

Present Net Annual Value, £ 1053 13 0

STATE of the WORKHOUSE for the Week ending Saturday, the 21<sup>st</sup> day of February 1857.

| Number of Inmates for which accommodation is provided.        | No. that can be accommodated in each building. | Total No. in such building on the above date. | Able-bodied. |      | Aged and Infirm persons, and adult persons, above 15 years of age, but not working. |      | Boys and Girls above 9 and under 15 years of age. |        | Children above 5 and under 9 years of age. | Children above 2 and under 5 years of age. | Infants under 2 years of age. | RETURN OF SICK AND LUNATICS.          |  | OBSERVATIONS. |
|---|--|---|--------------|------|---|------|---|--------|--|--|-------------------------------|---------------------------------------|--|---------------|
|   |  |   | Males.       | Fem. | Males.  | Fem. | Boys.   | Girls. |  |  |                               | Number in Hospital on the above date. | No. of Lunatics and Idiots in Workhouse on the above date. |               |
| Workhouse, . . . . .  | 152  | 174   | 31           | 67   | 6   | 10   | 23  | 11     | 5  | 16   | 15                            | 52                                    | In Workhouse Hospital                                      |               |
| Temporary Buildings, . . . . .                                | 700  |   |              |      |   |      |   |        |  |  |                               | 6                                     | In Wards with other inmates,                               |               |
| Additional Workhouse, . . . . .                               | 50   |   |              |      |   |      |   |        |  |  |                               |                                       |  |               |
| Permanent Fever Hospital, . . . . .                           | 50   |   |              |      |   |      |   |        |  |  |                               |                                       |  |               |
| Fever Sheds, . . . . .  |  |   |              |      |   |      |   |        |  |  |                               |                                       |  |               |
| Total, . . . . .  | 200  | 174   | 31           | 67   | 6   | 10   | 23  | 11     | 5  | 16   | 15                            | 58                                    | Total,   |               |
| Remaining on previous Saturday, as per last Return, . . . . . |  |   | 31           | 67   | 6   | 10   | 23  | 11     | 5  | 16   | 15                            | 52                                    | In Workhouse Hospital                                      |               |
| Admitted during the Week, . . . . .                           |  |   | 1            | 2    |   |      | 1   | 1      |  |  |                               | 5                                     | In Fever Hospital  |               |
| Total, . . . . .  |  |   | 32           | 69   | 6   | 10   | 24  | 12     | 5  | 16   | 15                            | 57                                    | Total,   |               |
| Discharged during the Week, . . . . .                         |  |   | 3            | 3    |   |      | 1   | 1      |  |  |                               | 2                                     |  |               |
| Died, . . . . .   |  |   | 1            |      |   |      |   |        |  |  |                               | 2                                     |  |               |
| Total Discharged and Dead, . . . . .                          |  |   | 4            | 3    |   |      | 1   | 1      |  |  |                               | 4                                     |  |               |
| REMAINING ON THE ABOVE DATE, . . . . .                        |  |   | 28           | 66   | 6   | 10   | 24  | 11     | 5  | 16   | 15                            | 53                                    |  |               |

RETURN of DESTITUTE PERSONS relieved out of the Workhouse, as by Relief Lists, for the last Week ended Saturday, the day of authenticated and laid before the Board of Guardians at this Meeting.

| RELIEF DISTRICT. | Destitute Persons relieved out of the Workhouse, but under 10 Vict. c. 31, s. 1. |   | Destitute Persons relieved out of the Workhouse, but not comprised in Sec. 1. |   | Total relieved out of the Workhouse. |          | RELIEF DISTRICT. | Destitute Persons relieved out of the Workhouse, but under 10 Vict. c. 31, s. 1. |   | Destitute Persons relieved out of the Workhouse, but not comprised in Sec. 1. |   | Total relieved out of the Workhouse. |          |
|------------------|--|---|---|---|--------------------------------------|----------|------------------|--|---|---|---|--------------------------------------|----------|
|                  | Number of cases relieved.  | Number of Persons, including Applicant and Family, dependent on him or her. | Number of cases relieved.   | Number of Persons, including Applicant and Family, dependent on him or her. | Cases.                               | Persons. |                  | Number of cases relieved.  | Number of Persons, including Applicant and Family, dependent on him or her. | Number of cases relieved.   | Number of Persons, including Applicant and Family, dependent on him or her. | Cases.                               | Persons. |
| No. I.           |  |   |   |   |                                      |          | Bt. forward      |  |   |   |   |                                      |          |
| No. II.          |  |   |   |   |                                      |          | No. X.           |  |   |   |   |                                      |          |
| No. III.         |  |   |   |   |                                      |          | No. XI.          |  |   |   |   |                                      |          |
| No. IV.          |  |   |   |   |                                      |          | No. XII.         |  |   |   |   |                                      |          |
| No. V.           |  |   |   |   |                                      |          | No. XIII.        |  |   |   |   |                                      |          |
| No. VI.          |  |   |   |   |                                      |          | No. XIV.         |  |   |   |   |                                      |          |
| No. VII.         |  |   |   |   |                                      |          | No. XV.          |  |   |   |   |                                      |          |
| No. VIII.        |  |   |   |   |                                      |          | No. XVI.         |  |   |   |   |                                      |          |
| No. IX.          |  |   |   |   |                                      |          | No. XVII.        |  |   |   |   |                                      |          |
| Car. forward     |  |   |   |   |                                      |          | TOTAL,           |  |   |   |   |                                      |          |

COPY of MINUTES of Proceedings of the Board of Guardians, at a Meeting held on Monday the 20<sup>th</sup> day of February 1857

PRESENT: In the Chair, James Cahiff  
Other Guardians:

Capt Taylor Rob Burke  
P. Fitzpatrick, Henry Cahiff  
John Boyot Or Gubille  
White Burke John Forest

The Minutes of last Meeting were read and Signed.



Notices of Marriage between the parties hereunder named having been received from the District Registrar by the Clerk, were duly read at the Board this day in accordance with the 15th section of the 7 & 8 Vic., c. 81.

|  |
|--|
|  |
|  |
|  |
|  |

The Workhouse Register was produced, examined, and authenticated, from No. 57 to No. 67, both inclusive, by the signature of the Chairman, and countersignature of the Clerk.

The Out-door Relief Register was produced, examined, and authenticated from No. \_\_\_\_\_ to No. \_\_\_\_\_, inclusive, by the signature of the Chairman and countersignature of the Clerk.

The Clerk's Report on the execution of Orders previously made by the Board was read, to the following effect:

The Ledger was produced by the Clerk, posted up to the last day of Meeting, with the proper Debits and Credits, as ordered on that day.

The Treasurer's Book of Receipts and Payments was produced, by which it appeared that there had been received during the week, - - - - - £ 11 . . . .

Paid during the week, - - - - - £ 9 . 14 . 2

And that the Balance on the Account of the Guardians was - £ 110 . 6 . 8

The Book was signed by the Chairman.

The Weekly balance-sheets of the several Collectors were laid before the Board, their accuracy having been first ascertained and authenticated by the Clerk.

The Lodgments made of Rates collected in the several

| Name of each Collector. | Electoral Divisions or in Collectors' Dis |
|-------------------------|---|
| Thomas Haverian         | Uroar                                     |
| Michael                 |   |
| Edw                     |   |
| Geo                     |   |
| Edw                     |   |
| Mich                    |   |
| P. O. L.                |   |

NOTE -  
Dobit the



Notices of Marriage between the parties hereunder named having been received from the District Registrar by the Clerk, were duly read at the Board this day in accordance with the 15th section of the 7 & 8 Vic., c. 81.

|  |
|--|
|  |
|  |
|  |
|  |

The Workhouse Register was produced, examined, and authenticated, from No. 57 to No. 60, both inclusive, by the signature of the Chairman, and countersignature of the Clerk.

The Out-door Relief Register was produced, examined, and authenticated from No. 1 to No. 10, inclusive, by the signature of the Chairman and countersignature of the Clerk.

The Clerk's Report on the execution of Orders previously made by the Board was read, to the following effect:

The Ledger was produced by the Clerk, posted up to the last day of Meeting, with the proper Debits and Credits, as ordered on that day.

The Treasurer's Book of Receipts and Payments was produced, by which it appeared that there had been received during the week,

Paid during the week, - - - - - £ 9 . 14 . 2

And that the Balance on the Account of the Guardians was - £ 110 . 6 . 8

The Book was signed by the Chairman.

The Weekly balance-sheets of the several Collectors were laid before the Board, their accuracy having been first ascertained and authenticated by the Clerk.

The Lodgments made of Rates collected in the several

| Name of each Collector. | Electoral Divisions or in Collectors Dis |
|-------------------------|--|
| Thomas Harrison         |  |
| Michael                 |  |
| Edw                     |  |
| Geo                     |  |
| Edw                     |  |
| Mich                    |  |
| J. O'Leary              |  |

NOTE.

Debit the



ents made by him since last Meeting, amounting  
to, he having first ascertained the accuracy of the  
and authenticated the same by his signature:

Barries received during the week,

£ s. d.  
22. 3. 7  
21. 12. 0  
21. 12. 0

was examined

Galway County Council

The requirements of each Relieving Officer for the ensuing week having been duly considered  
and estimated by the Board, checks on the Treasurer and orders on Contractors, were duly signed  
and delivered to each of them, of the following amounts and value, respectively:

| RELIEF DISTRICT. | Name of Relieving Officer. | By Check on Treasurer. | By Order on Contractors. |                | RELIEF DISTRICT. | Name of Relieving Officer. | By Check on Treasurer. | By Order on Contractors. |                |
|------------------|----------------------------|------------------------|--------------------------|----------------|------------------|----------------------------|------------------------|--------------------------|----------------|
|                  |                            | £ s. d.                | Article and quantity.    | Value. £ s. d. |                  |                            | £ s. d.                | Article and quantity.    | Value. £ s. d. |
| No. I.           |                            |                        |                          |                | Bt. forward      |                            |                        |                          |                |
| No. II.          |                            |                        |                          |                | No. X.           |                            |                        |                          |                |
| No. III.         |                            |                        |                          |                | No. XI.          |                            |                        |                          |                |
| No. IV.          |                            |                        |                          |                | No. XII.         |                            |                        |                          |                |
| No. V.           |                            |                        |                          |                | No. XIII.        |                            |                        |                          |                |
| No. VI.          |                            |                        |                          |                | No. XIV.         |                            |                        |                          |                |
| No. VII.         |                            |                        |                          |                | No. XV.          |                            |                        |                          |                |
| No. VIII.        |                            |                        |                          |                | No. XVI.         |                            |                        |                          |                |
| No. IX.          |                            |                        |                          |                | No. XVII.        |                            |                        |                          |                |
| Ca. forwd.       |                            |                        |                          |                | TOTAL.           |                            |                        |                          |                |

Credit Treasurer with Checks.

Debit each Relieving Officer with Checks and Orders.

On the Report and recommendation of the Finance Committee the following Bills having been  
duly examined, and found to be correct, and in accordance with the several Orders were directed to  
be paid, and Checks for the several amounts were duly drawn on the Treasurer and Signed, namely:

1. Clothing Account.  
Martin Healy for Shoes ————— £ 3 s. 6 d.

Debit Clothing Account and Credit Treasurer with the several sums as above

2. Establishment Account.

John Bate for Public Cup ————— 2 10 .  
James Olaton Petrol Bills ————— 12 8

Debit Establishment Account and Credit Treasurer with the several sums as above.



3. Warehouse Invoice Account.

|                         |   |    |    |
|-------------------------|---|----|----|
| Michael Cumiffe for Exp | £ | s. | d. |
|                         | 4 | 9  | 14 |

Debit Warehouse Invoice Account and Credit Treasurer with the several sums as above.

4. Out-door Relief Invoice Account.

|  |   |    |    |
|--|---|----|----|
|  | £ | s. | d. |
|  |   |    |    |

Credit Treasurer and Debit Out-door Relief Invoice Account with the several sums as above.

The Clerk's Report of Vaccination was read — this on the first meeting in every month. — Number of successful cases.

The Report of the Visiting Committee was read, and Orders were made thereon as follows:

May Keller for Exp 25 March 1855 12. 6. 11

les Treasurer

W. W. P. 1855

The Reports of the Master and other Officers were read and Orders made thereon as follows:

The Medical Officer reports the general health of the inmates remains satisfactory —



The following Orders of the Poor Law Commissioners were laid before the Board, and directions given thereon, as follows

The following Letters from the Poor Law Commissioners and others were read by the Clerk, and directions given to answer them respectively, to the following effect, or Orders made on them respectively as follows:

Letter from Poor Law Commissioners  
24<sup>th</sup> February 1837 No. 4635. 1837 fining this Union  
to the expenditure of five pounds to assist in the  
emigration of Eliza Regan.

Circular from William Donnell Esq. Registrar  
General. dated Dublin 14<sup>th</sup> February 1837  
requesting the opinion of the Guardians on the  
average rate of produce returned by the Constables.

Resolved that we cannot accept as correct the  
Returns of the average rate of produce in this  
Union, as stated by the Constables, presented  
and recently submitted to the Board of  
Guardians for their opinion. We are  
well aware that what is stated therein to be  
the average produce of Hay in this Union is  
quite incorrect, as some of the best land in the  
Union is represented in it, as producing heavier  
crops of Hay than the best land in Copple  
of fining

Council Archives



The cases of provisional relief, and applications for relief were considered and decided on, as set forth in the Application and Report Books.

The number of provisional admissions to the Workhouse confirmed was - - - 3

Of this disallowed - - - - -

The number of applicants admitted to the Workhouse was - - - 2

The number of cases of provisional Out-door relief was - - -

Do. do. in which relief was continued by the Guardians - - -

The number of other applicants in the Relieving Officer's Books relieved by order of the Guardians was - - -

The number of applicants for whom relief was not ordered

The Bonds and other securities in force were laid before the Guardians by the Clerk, together with his Report thereon, as follows: (this on the second Meeting after the Annual Election in every year.)

Ordered that Tenders be received on this day  
will for Carriage Land at the Workhouse

Resolved that a Special Meeting of the Guardians  
be summoned for the next Board day, to take  
into Consideration the Circular from the  
Deputations of the Guardians of the Poor of Ireland  
with reference to the Amalgamation of  
Unions of other improvements in the  
existing System.

Ordered that a daily Receipt Book be provided  
and regularly kept for the future -