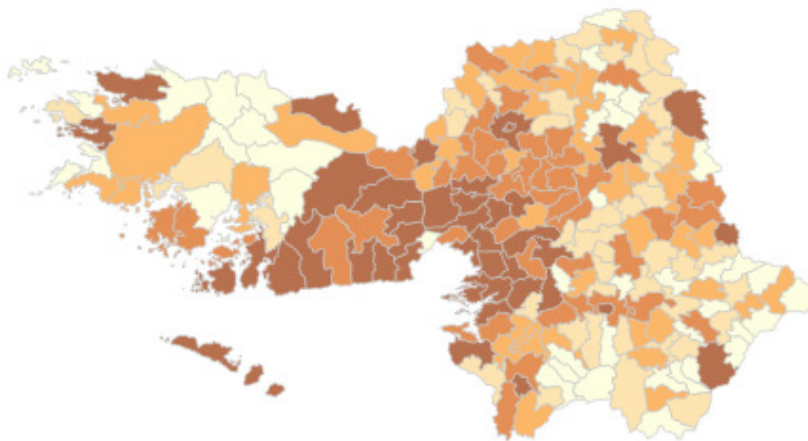


Census 2011 – Results for County Galway

Health, Disability & Caring



Summary

Health

General Health of Population of County Galway

- The older the age group the less people that state they are in very good health
- The older the age group the more people that state their health is fair, bad or very bad.
- At 86.5%, the 5 - 9 age group is the most healthiest stating they were very healthy
- At 47.9%, the 65 – 69 age group was the most popular group that said their health was good
- The over 85s was the most popular age group that said their health was either fair, bad or very bad.

General Health of Population of County Galway over the Age 65

- 62.6% of those over the age of 65 in County Galway consider their health very good or good
- 35.8% of those over the age of 65 in County Galway consider their health fair, bad or very bad

Disability

Persons with one or more Disability

- 12.1% of the population of County Galway have at least one disability
- As a percentage of the population at 12.2% females are slightly more likely to have a disability than males at 12%.

Disabled Persons Living Alone in County Galway

- People with disabilities are more likely to live on their own than the general population
- The older the person with the disability gets, the more likely they are to live on their own

Carers

Carers in Relation to the Total Population

- There are 7,898 carers in County Galway. This is 4.5% of the population of County Galway compared to the State at 4.1%.
- Females in County Galway are more likely to be carers than males.
- There is a higher percentage of carers in County Galway than the State for most age categories.
- In County Galway the 50 – 54 age category contains the highest percentage of carers at 10.2%

Unpaid Carers

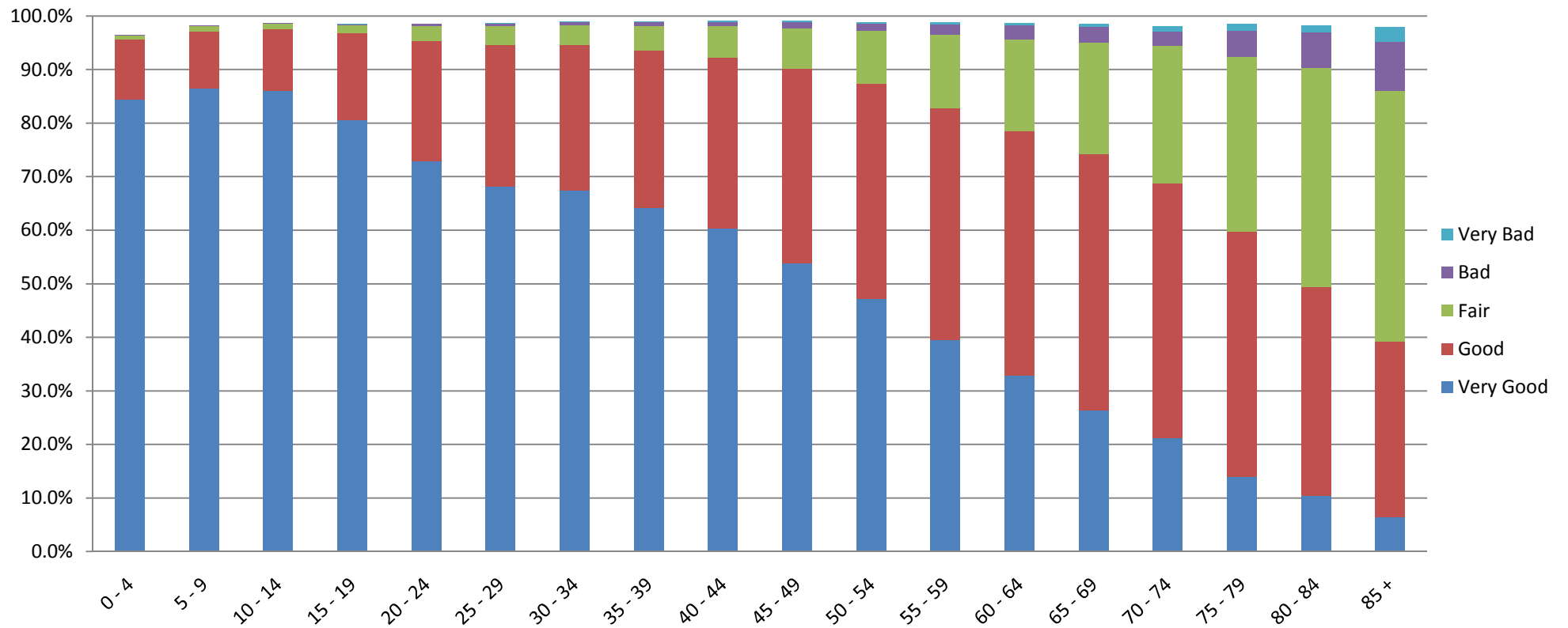
- 42.1% of carers carry out up to 14 hours of unpaid caring work per week
- 46.9% of carers carry out more than 15 hours unpaid caring work per week

Health

Table 1 General Health* of County Galway 2011

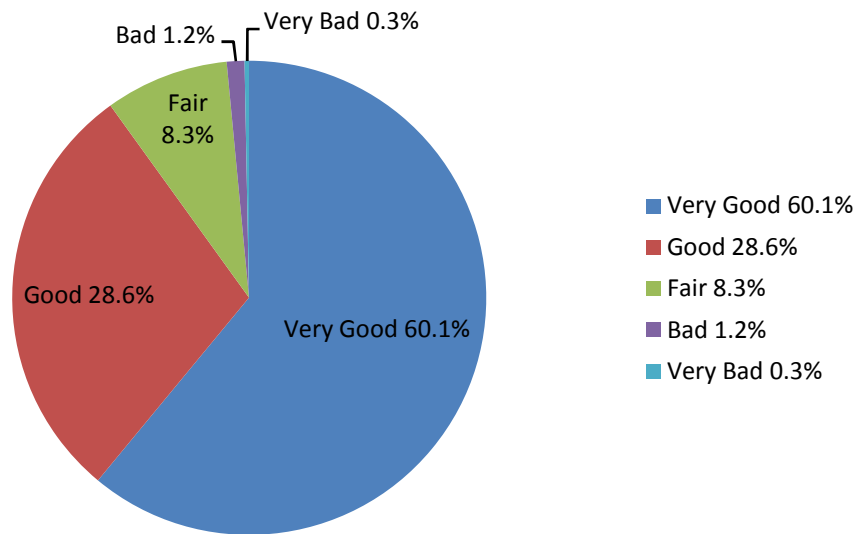
	All	Very Good		Good		Fair		Bad		Very Bad	
0 - 4 years	14,091	11,886	84.4%	1,579	11.2%	100	0.7%	11	0.1%	4	0.0%
5 - 9 years	13,310	11,514	86.5%	1,418	10.7%	120	0.9%	11	0.1%	3	0.0%
10 - 14 years	12,292	10,582	86.1%	1,404	11.4%	129	1.0%	7	0.1%	3	0.0%
15 - 19 years	10,970	8,846	80.6%	1,768	16.1%	180	1.6%	11	0.1%	7	0.1%
20 - 24 years	8,971	6,540	72.9%	2,009	22.4%	247	2.8%	31	0.3%	4	0.0%
25 - 29 years	10,497	7,160	68.2%	2,775	26.4%	382	3.6%	35	0.3%	7	0.1%
30 - 34 years	13,235	8,923	67.4%	3,594	27.2%	491	3.7%	67	0.5%	13	0.1%
35 - 39 years	14,131	9,075	64.2%	4,155	29.4%	642	4.5%	94	0.7%	15	0.1%
40 - 44 years	13,451	8,122	60.4%	4,294	31.9%	782	5.8%	102	0.8%	21	0.2%
45 - 49 years	12,160	6,542	53.8%	4,413	36.3%	929	7.6%	140	1.2%	23	0.2%
50 - 54 years	11,198	5,286	47.2%	4,487	40.1%	1,111	9.9%	158	1.4%	38	0.3%
55 - 59 years	10,038	3,954	39.4%	4,360	43.4%	1,371	13.7%	195	1.9%	41	0.4%
60 - 64 years	8,790	2,885	32.8%	4,018	45.7%	1,507	17.1%	238	2.7%	33	0.4%
65 - 69 years	6,967	1,831	26.3%	3,335	47.9%	1,452	20.8%	212	3.0%	35	0.5%
70 - 74 years	5,202	1,099	21.1%	2,482	47.7%	1,330	25.6%	146	2.8%	48	0.9%
75 - 79 years	4,167	584	14.0%	1,904	45.7%	1,357	32.6%	210	5.0%	48	1.2%
80 - 84 years	2,932	307	10.5%	1,144	39.0%	1,196	40.8%	193	6.6%	39	1.3%
85 years and over	2,722	175	6.4%	893	32.8%	1,274	46.8%	250	9.2%	75	2.8%
Total	175,124	105,311	60.1%	50,032	28.6%	14,600	8.3%	2,111	1.2%	457	0.3%

Figure 1 General Health of Population County Galway 2011



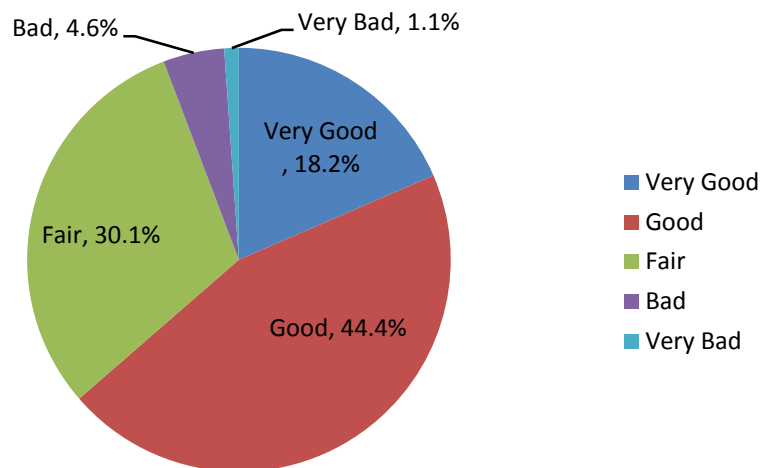
- The older the age group the less people that state they are in very good health
- The older the age group the more people that state their health is fair, bad or very bad.
- At 86.5% the 5 - 9 age group is the most healthiest stating they were very healthy
- At 47.9% the 65 – 69 age group was the most popular that said their health was good
- The over 85s was the most popular age group that said their health was either fair, bad or very bad.

Figure 2 General Health of Population of County Galway 2011 (All Ages)



- 88.7% of the population of County Galway consider their health very good or good
- 9.8% of the population of County Galway consider their health fair, bad or very bad

Figure 3 General Health of Population of County Galway over the Age 65, 2011



- 62.6% of those over the age of 65 in County Galway consider their health very good or good
- 35.8% of those over the age of 65 in County Galway consider their health fair, bad or very bad

*A new question on general health was introduced for the first time in census 2011 and asked respondents to select one of five categories ranging from very good to very bad. Self-perceived health provides a well validated and widely used measure of actual health, despite its subjective nature.

Disability

Table 2 Persons with one or more Disability by Type of Disability, County Galway 2011

	Total		Male		Female	
Total persons	175,124		88,244		86,880	
Total persons with a disability	21,186	12.1%	10,607	12.0%	10,579	12.2%
Blindness or a serious vision impairment	1,864	1.1%	884	1.0%	980	1.1%
Deafness or a serious hearing impairment	3,339	1.9%	1,815	2.1%	1,524	1.8%
A condition that substantially limits one or more basic physical activities	9,275	5.3%	4,037	4.6%	5,238	6.0%
An intellectual disability	2,275	1.3%	1,375	1.6%	900	1.0%
Difficulty in learning, remembering or concentrating	4,973	2.8%	2,714	3.1%	2,259	2.6%
Psychological or emotional condition	3,182	1.8%	1,573	1.8%	1,609	1.9%
Other disability, including chronic illness	9,532	5.4%	4,455	5.0%	5,077	5.8%
Difficulty in dressing, bathing or getting around inside the home	5,345	3.1%	2,340	2.7%	3,005	3.5%
Difficulty in going outside home alone	6,870	3.9%	2,806	3.2%	4,064	4.7%
Difficulty in working or attending school/college	7,625	4.4%	3,780	4.3%	3,845	4.4%
Difficulty in participating in other activities	8,166	4.7%	3,651	4.1%	4,515	5.2%

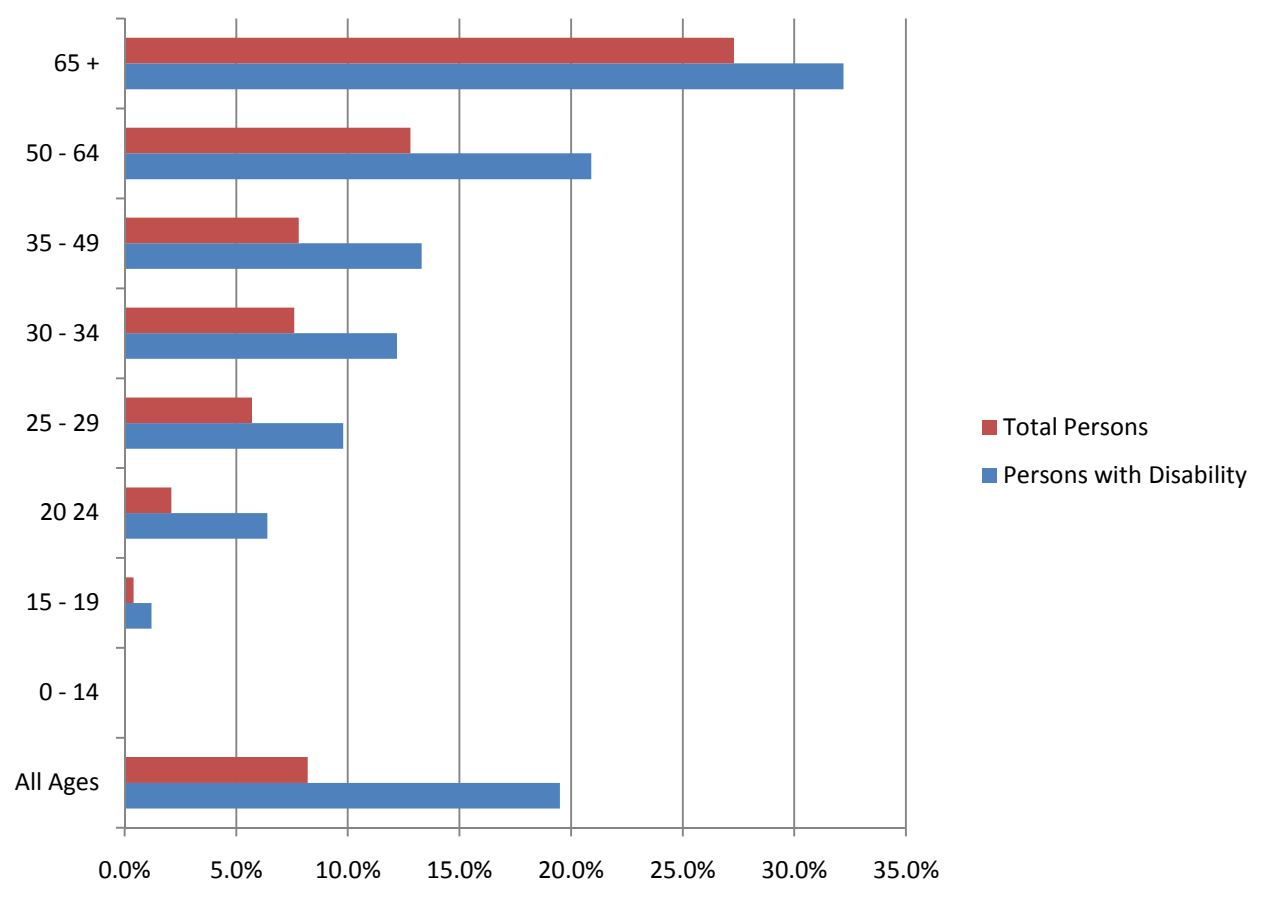
- 12.1% of the population of County Galway have at least one disability
- As a percentage of the population at 12.2% females are slightly more likely to have a disability than males at 12%.

Table 3 Percentage of Disabled Persons Living Alone in County Galway by Age Group & Disability Type, 2011

	All Ages	0 - 14 years	15 - 19 years	20 - 24 years	25 - 29 years	30 - 34 years	35 - 49 years	50 - 64 years	65 years and over
Total persons	8.2	0	0.4	2.1	5.7	7.6	7.8	12.8	27.3
Total persons with a disability	19.5	0	1.2	6.4	9.8	12.2	13.3	20.9	32.2
Blindness or a serious vision impairment	24.2	0	0	9.5	13.2	10	11	30	33.7
Deafness or a serious hearing impairment	23.4	0	5	6.7	12.2	17.9	12.2	19	29.5
A condition that substantially limits one or more basic physical activities	25.5	0	2.2	8.2	15.8	11.2	15.2	21.6	33.1
An intellectual disability	9.8	0	0.6	1.5	4.5	9.3	9.5	26.3	24.1
Difficulty in learning, remembering or concentrating	14.2	0	0.8	5.3	9.6	10.2	16.3	24.7	28.5
Psychological or emotional condition	20.1	0	3.5	3.4	12	19.1	20.1	29.6	30.1
Other disability, including chronic illness	20	0	1	8.4	13.4	10.4	13.2	19.8	30.2
Difficulty in dressing, bathing or getting around inside the home	20.4	0	0	3.8	11	5.8	10.2	18.4	28.7
Difficulty in going outside home alone	23.1	0	0	4.6	7.6	9.6	12.6	20.7	31.8
Difficulty in working or attending school/college	18.5	0	0.9	2.7	12.6	8.4	13.8	21.7	29.1
Difficulty in participating in other activities	20.3	0	0.6	6.5	11.8	10.5	13	19.7	30.5

- People with disabilities are more likely to live on their own than the general population
- The older the person with the disability gets, the more likely they are to live on their own

Figure 4 Percentage of Disabled Persons Living Alone in County Galway by Age Group & Disability Type, 2011



Carers

Table 4 Carers as a % of the Total Population in County Galway & the State 2011

	County Galway			State
	% Male	% Female	% Both Sexes	% Both
All Ages	3.7	5.4	4.5	4.1
0 - 9 years	0.2	0.3	0.3	0.3
10 - 14 years	0.9	1.3	1.1	0.8
15 - 19 years	1.7	1.7	1.7	1.5
20 - 24 years	1.8	2.2	2	1.9
25 - 29 years	2.1	3.2	2.7	2.3
30 - 34 years	3	3.4	3.2	3
35 - 39 years	4.1	6.1	5.1	4.7
40 - 44 years	6	9.6	7.8	7
45 - 49 years	7.7	12.2	9.9	9
50 - 54 years	7.9	12.6	10.2	9.5
55 - 59 years	7.2	10.4	8.8	8.3
60 - 64 years	4.7	8.8	6.7	6.5
65 - 69 years	4.8	7.1	5.9	5.5
70 - 74 years	3.7	6.5	5	4.9
75 - 79 years	4.2	5.6	4.9	4.7
80 - 84 years	4.2	2.6	3.3	3.7
85 years and over	3	1.5	2	2.3

- There are 7,898 carers in County Galway. This is 4.5% of the population of County Galway compared to the State at 4.1%.
- Females in County Galway are more likely to be carers than males.
- There is a higher percentage of carers in County Galway than the State for most age categories.
- In County Galway the 50 – 54 age category contains the highest percentage of carers at 10.2%

Figure 5 Carers as a % of the Total Population in County Galway & the State 2011

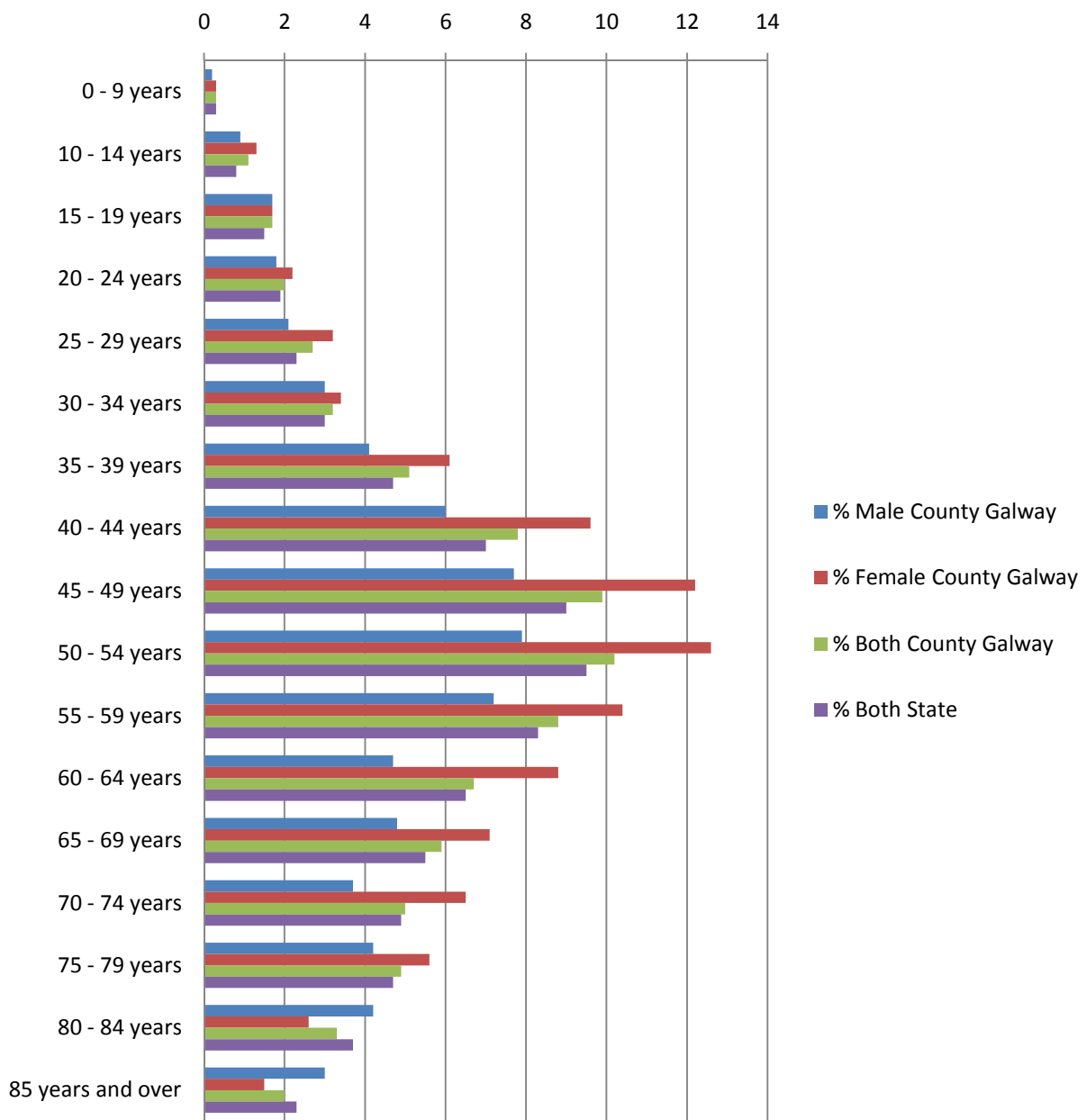


Table 5 Carers by Regular Unpaid Help, County Galway , 2011

	No.	%
All carers	7,898	
1-14 hours unpaid help per week	3,322	42.1%
15-28 hours unpaid help per week	1,282	16.2%
29-42 hours unpaid help per week	696	8.8%
43 or more hours unpaid help per week	1,732	21.9%
Not stated	866	11.0%

- 42.1% of carers carry out up to 14 hours of unpaid work per week
- 46.9% of carers carry out more than 15 hours unpaid caring work per week

Figure 6 Carers by Regular Unpaid Help, County Galway , 2011

