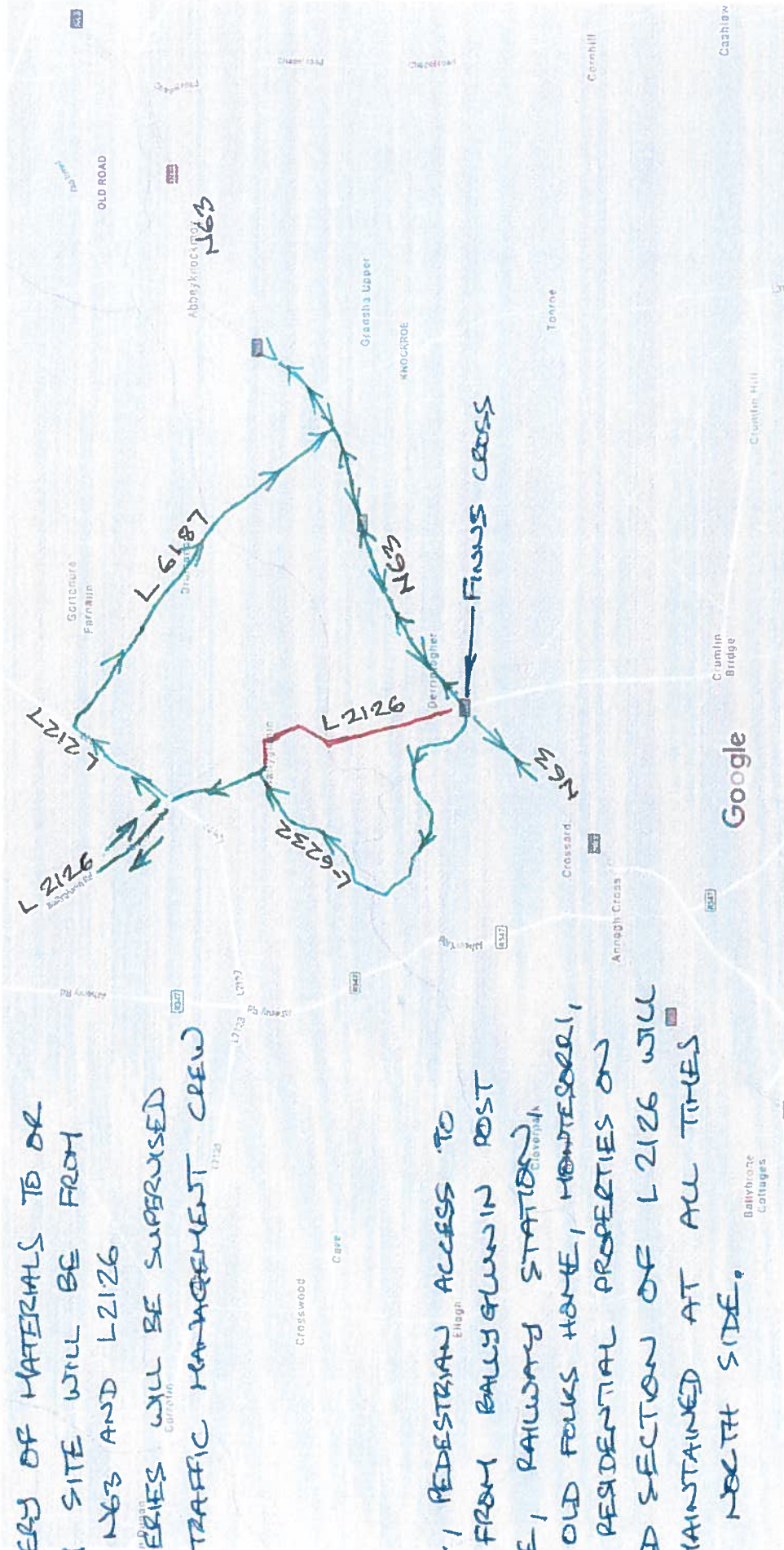


Google Maps

DELIVERY OF MATERIALS TO OR FROM SITE WILL BE FROM BOTH N63 AND L2126 DELIVERIES WILL BE SUPERVISED BY TRAFFIC MANAGEMENT CREW

LOCAL, PEDESTRIAN ACCESS TO AND FROM BALLYGLUNIN POST OFFICE, RAILWAY STATION, OLD FOLKS HOME, MONTESSORI, AND RESIDENTIAL PROPERTIES ON CLOSED SECTION OF L2126 WILL BE MAINTAINED AT ALL TIMES FROM NORTH SIDE.



— ROAD CLOSED = L 2126 FROM N63 TO L 6232 T-JUNCTION

— ALTERNATIVE ROUTES

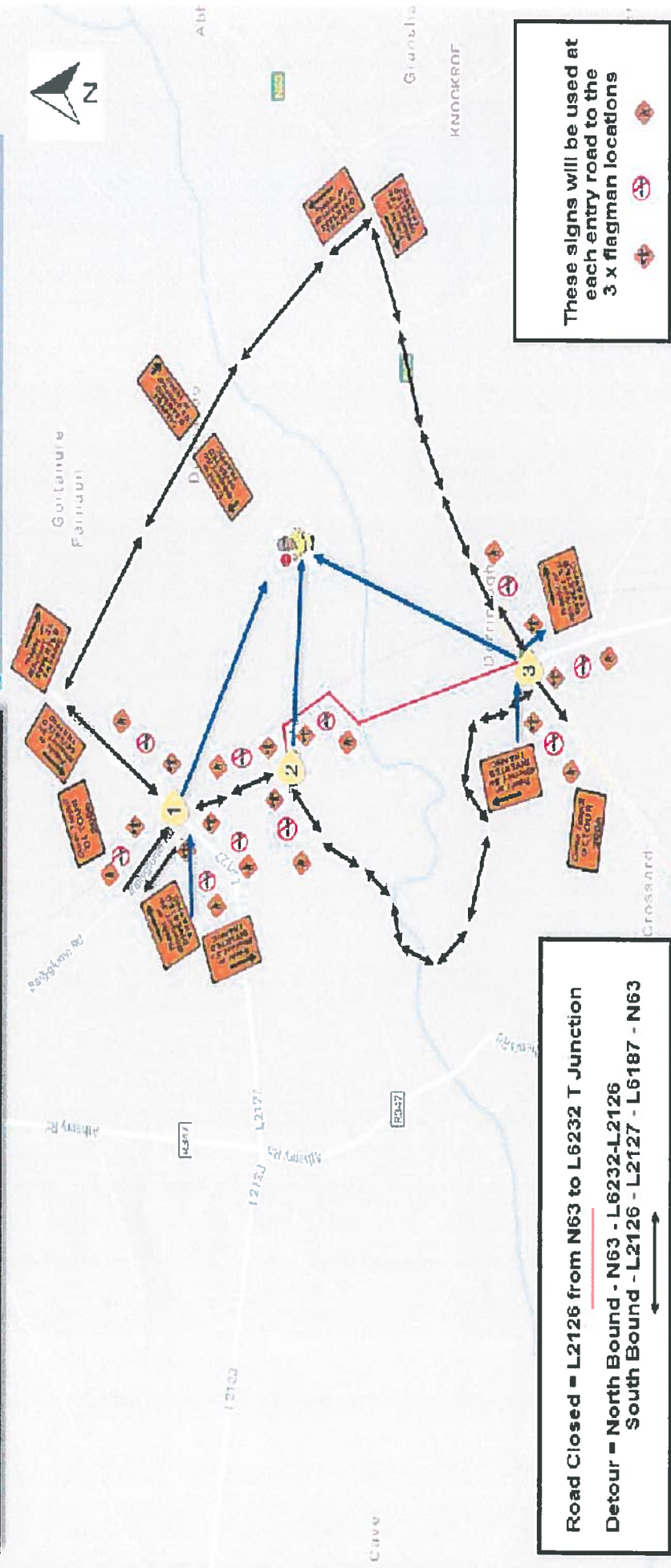
NORTH BOUND — N63 → L-6232 → L-2126

SOUTH BOUND — L 2126 → L-2187 → ~~L-2126~~ L-6187 → N63

Site Map



**Traffic Management Plan - Detour
N63 Abbeyknockmoy to Annagh Hill**



These signs will be used at each entry road to the 3 x flagman locations

**Road Closed = L2126 from N63 to L6232 T Junction
Detour = North Bound - N63 - L6232-L2126
South Bound - L2126 - L2127 - L6187 - N63**

Delivery of materials to or from site will be from both N63 and L2126 deliveries will be considered by traffic Management Crew

Signage	Type of Road	Advisive Message Sign (MS) (D1)	Advisive Message Sign (MS) (D2)	Min. Sign Height (mm)	Min. Sign Width (mm)	Min. Sign Area (sq. mm)	Min. Sign Spacing (m)	Min. Sign Spacing (ft)	Min. Sign Spacing (m)	Min. Sign Spacing (ft)	Min. Sign Spacing (m)	Min. Sign Spacing (ft)	Min. Sign Spacing (m)	Min. Sign Spacing (ft)	Min. Sign Spacing (m)	Min. Sign Spacing (ft)	Min. Sign Spacing (m)	Min. Sign Spacing (ft)	Min. Sign Spacing (m)	Min. Sign Spacing (ft)
1	Single Vehicle	25	25	750	750	562500	12	39	12	39	12	39	12	39	12	39	12	39	12	39
2	Large Vehicle	30	30	1050	1050	1102500	15	49	15	49	15	49	15	49	15	49	15	49	15	49
3	Large Vehicle	30	30	1050	1050	1102500	15	49	15	49	15	49	15	49	15	49	15	49	15	49
4	Large Vehicle	30	30	1050	1050	1102500	15	49	15	49	15	49	15	49	15	49	15	49	15	49
5	Large Vehicle	30	30	1050	1050	1102500	15	49	15	49	15	49	15	49	15	49	15	49	15	49
6	Large Vehicle	30	30	1050	1050	1102500	15	49	15	49	15	49	15	49	15	49	15	49	15	49
7	Large Vehicle	30	30	1050	1050	1102500	15	49	15	49	15	49	15	49	15	49	15	49	15	49
8	Large Vehicle	30	30	1050	1050	1102500	15	49	15	49	15	49	15	49	15	49	15	49	15	49
9	Large Vehicle	30	30	1050	1050	1102500	15	49	15	49	15	49	15	49	15	49	15	49	15	49
10	Large Vehicle	30	30	1050	1050	1102500	15	49	15	49	15	49	15	49	15	49	15	49	15	49
11	Large Vehicle	30	30	1050	1050	1102500	15	49	15	49	15	49	15	49	15	49	15	49	15	49
12	Large Vehicle	30	30	1050	1050	1102500	15	49	15	49	15	49	15	49	15	49	15	49	15	49
13	Large Vehicle	30	30	1050	1050	1102500	15	49	15	49	15	49	15	49	15	49	15	49	15	49
14	Large Vehicle	30	30	1050	1050	1102500	15	49	15	49	15	49	15	49	15	49	15	49	15	49
15	Large Vehicle	30	30	1050	1050	1102500	15	49	15	49	15	49	15	49	15	49	15	49	15	49
16	Large Vehicle	30	30	1050	1050	1102500	15	49	15	49	15	49	15	49	15	49	15	49	15	49
17	Large Vehicle	30	30	1050	1050	1102500	15	49	15	49	15	49	15	49	15	49	15	49	15	49
18	Large Vehicle	30	30	1050	1050	1102500	15	49	15	49	15	49	15	49	15	49	15	49	15	49
19	Large Vehicle	30	30	1050	1050	1102500	15	49	15	49	15	49	15	49	15	49	15	49	15	49
20	Large Vehicle	30	30	1050	1050	1102500	15	49	15	49	15	49	15	49	15	49	15	49	15	49
21	Large Vehicle	30	30	1050	1050	1102500	15	49	15	49	15	49	15	49	15	49	15	49	15	49
22	Large Vehicle	30	30	1050	1050	1102500	15	49	15	49	15	49	15	49	15	49	15	49	15	49
23	Large Vehicle	30	30	1050	1050	1102500	15	49	15	49	15	49	15	49	15	49	15	49	15	49
24	Large Vehicle	30	30	1050	1050	1102500	15	49	15	49	15	49	15	49	15	49	15	49	15	49
25	Large Vehicle	30	30	1050	1050	1102500	15	49	15	49	15	49	15	49	15	49	15	49	15	49
26	Large Vehicle	30	30	1050	1050	1102500	15	49	15	49	15	49	15	49	15	49	15	49	15	49
27	Large Vehicle	30	30	1050	1050	1102500	15	49	15	49	15	49	15	49	15	49	15	49	15	49
28	Large Vehicle	30	30	1050	1050	1102500	15	49	15	49	15	49	15	49	15	49	15	49	15	49
29	Large Vehicle	30	30	1050	1050	1102500	15	49	15	49	15	49	15	49	15	49	15	49	15	49
30	Large Vehicle	30	30	1050	1050	1102500	15	49	15	49	15	49	15	49	15	49	15	49	15	49

1. These dimensions apply to all signs. 2. These dimensions apply to all signs. 3. These dimensions apply to all signs. 4. These dimensions apply to all signs. 5. These dimensions apply to all signs. 6. These dimensions apply to all signs. 7. These dimensions apply to all signs. 8. These dimensions apply to all signs. 9. These dimensions apply to all signs. 10. These dimensions apply to all signs. 11. These dimensions apply to all signs. 12. These dimensions apply to all signs. 13. These dimensions apply to all signs. 14. These dimensions apply to all signs. 15. These dimensions apply to all signs. 16. These dimensions apply to all signs. 17. These dimensions apply to all signs. 18. These dimensions apply to all signs. 19. These dimensions apply to all signs. 20. These dimensions apply to all signs. 21. These dimensions apply to all signs. 22. These dimensions apply to all signs. 23. These dimensions apply to all signs. 24. These dimensions apply to all signs. 25. These dimensions apply to all signs. 26. These dimensions apply to all signs. 27. These dimensions apply to all signs. 28. These dimensions apply to all signs. 29. These dimensions apply to all signs. 30. These dimensions apply to all signs.

PLANNED WORKS TRAFFIC MANAGEMENT DESIGN SHEET
TRAFFIC MANAGEMENT DESIGN DETOUR SHEET

Works Name: N63 Abbeyknockmoy to Annaghhill Co. Galway - Detour

TDD

Traffic Management Selection		Notes	
Road Closure: 24/7 - Working Hours	Yes	Road Closure permit applied for	
Detour	Yes	For section 1 of the works	
Roadworks Speedlimit	60km/hr		
Cautionary Speedlimit			

Detour Risk Assessment	
Length	6km
Capacity	Unknown
Speed > Limit	80km/hr
Accident Histor	Unknown
Pedestrians	Unknown
Schools	No
Shops	
Cyclists	
Equestrian	
Rail	
Vulnerable Users	
Bus/School Route	

Layout Parameters	
Advance Distance	600
Number of Advance Signs	3
Min Sign Visibility	120
Size of Signs	750
Height of Cones	1m
Road Width	5
Repeater Sign Distances	200
Diversion Length	6km

Inspections	
Monday	Yes
Tuesday	Yes
Wednesday	Yes
Thursday	Yes
Friday	Yes
Saturday	
Sunday	

Consultation

Buses/School Buses Milk Lorries
 Local Residents v Emergency Services v
 Gardai-Roadworks Speedlimit v / Active TM v

Sign Ref	Sign	Quantity	Supplement/ Additional Info	No.
WK001		9	km/h	
RUS014		9	m	
W622-04A				
WK090		2	Specify Speed Both Sides	
WK091L		4		
WK091R		4		
WK061		9	m	
WK094		2		
MB		3		
WK091S		4	km/h	

Sign Ref	Sign	Quantity	Supplement/ Additional Info	No.
WK090				
WK091				
W647		30	km/h	
W644		10	m	
W645			m	
W622			km/h	
W625L				
W626L				
W603L			m	
W603R			m	

Sign Ref	Sign	Quantity	Supplement/ Additional Info	No.
W652				
PB				
PF				
W601R1		9		
RUS091S				
C		50		
LS				
LF			km/h	